



## YENKEE YKM 2009CS Combo WL Keyboard and Mouse Sets Instruction Manual

[Home](#) » [YENKEE](#) » YENKEE YKM 2009CS Combo WL Keyboard and Mouse Sets Instruction Manual 

### Contents

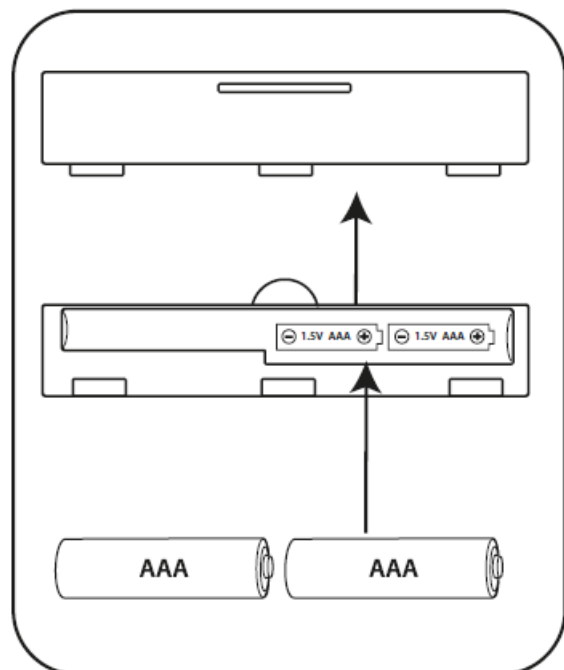
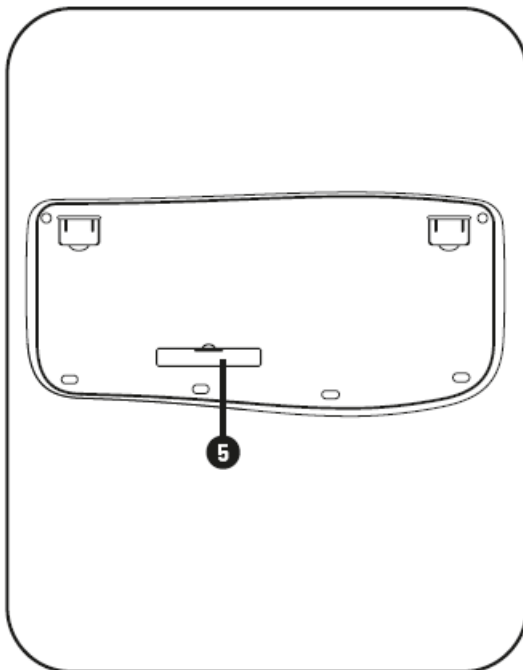
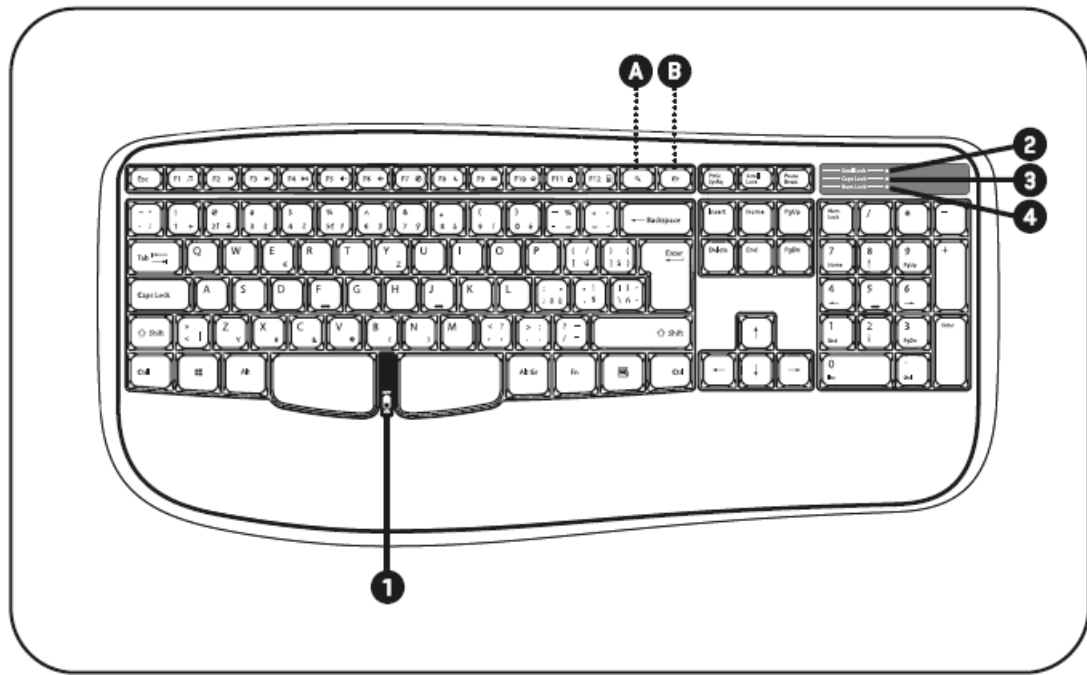
- [1 YENKEE YKM 2009CS Combo WL Keyboard and Mouse Sets](#)
- [2 Wireless Keyboard & Mouse Set](#)
  - [2.1 Package contents:](#)
- [3 Specifications](#)
- [4 Documents / Resources](#)
- [5 Related Posts](#)

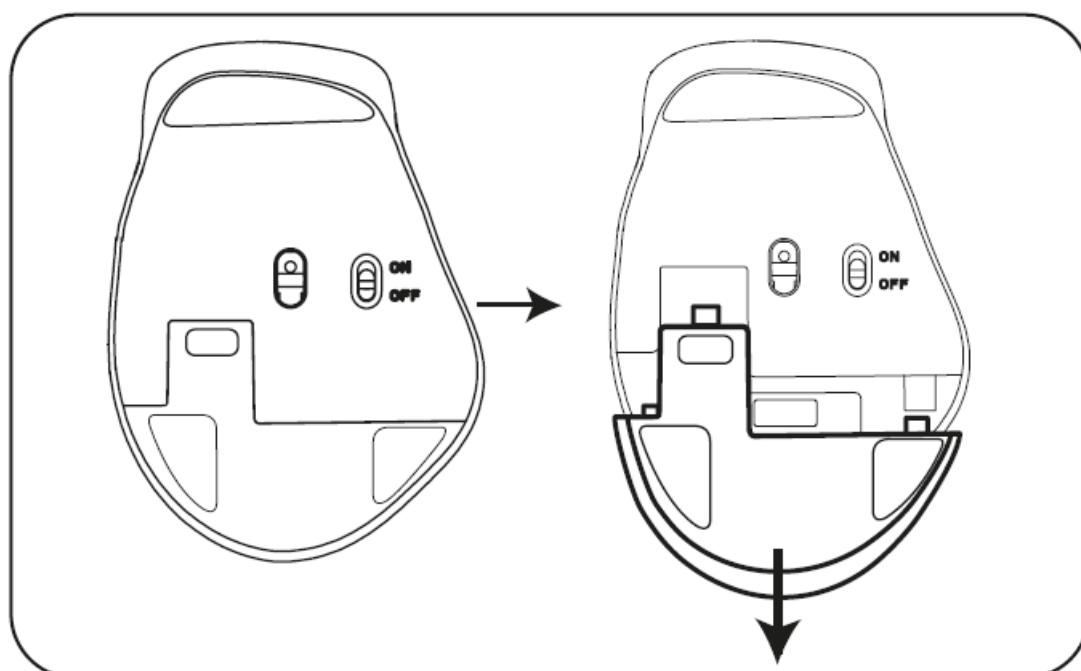
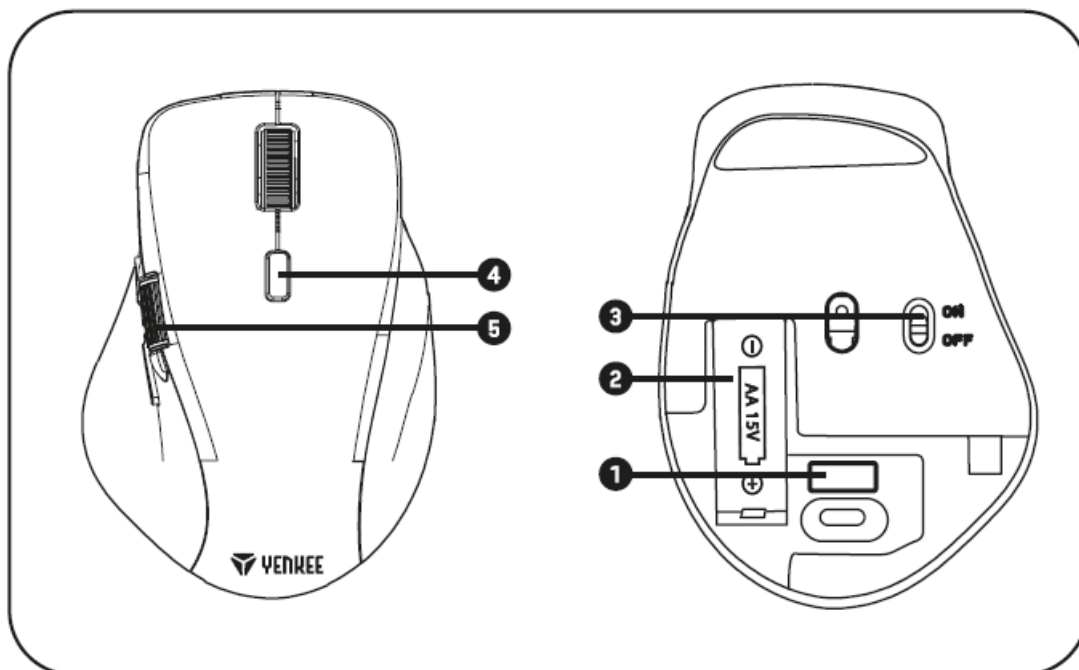


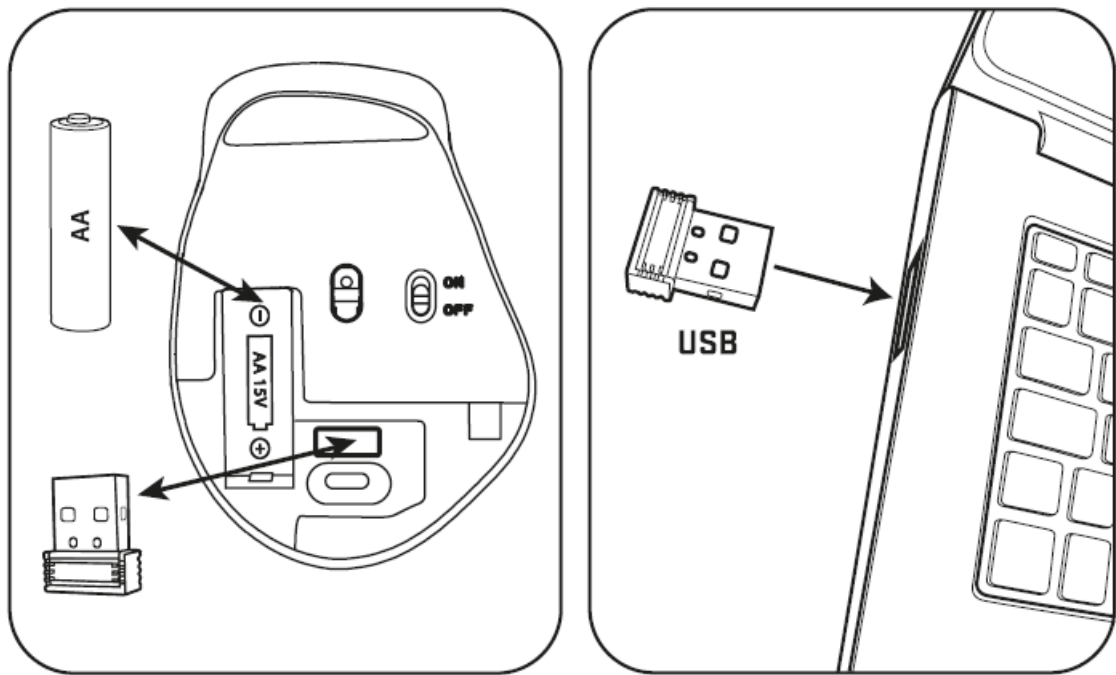
### YENKEE YKM 2009CS Combo WL Keyboard and Mouse Sets



## Wireless Keyboard & Mouse Set







**Package contents:**

- Wireless keyboard 6 mouse
- USB receiver (placed in mouse storage below bottom cover]
- User's manual

**Keyboard features:**

1. ON/OFF switch
2. Num Lock LED indication
3. Caps Lock LED indication
4. Scroll Lock LED indication
5. Battery compartment

**Mouse features:**

1. 2.4 Dongle storage
2. Battery compartment
3. ON/OFF switch
4. DPI button
5. Side scroll wheel

**Notice:**

The keyboard enter standby mode when there is inactivity, around 5 seconds.

The keyboard enter sleeping mode when there is inactivity, around 8 minutes.

The mouse enter standby mode when there is inactivity, around 5 seconds.

The mouse enter sleeping mode when there is inactivity, around 8 minutes.

Click any key to resume the normal operation. Switch off keyboard 6 mouse with ON/OFF switch while not used in order to save batteries.

**Keyboard Low Power Indication:**

The three LED will flash together for 8 seconds when the voltage is lower than 2.2V. This will happen when you wake up the keyboard from sleeping mode or when you turn it on again until you change the battery

**Function keys:**

The Fn mode changes the activity of the function keys F1 – F12. In this way, you can select to activate the multimedia functions printed with blue colour in bottom part of the keys by simultaneously pressing Fn + F1-F12.

- Fn + F1: Media player
- Fn + F2: Previous track
- Fn + F3: Next track
- Fn + F4: Play/Pause
- Fn + F5: Volume down
- Fn + F6: Volume up
- Fn + F7: Mute
- Fn + F8: Sleeping mode
- Fn + F9: Mail client
- Fn + F10: Open default browser Fn + F11: Lock computer
- Fn + F12: Calculator
- A: Search
- B: Open Bookmarks

**Specifications****Mouse**

- Sensitivity: 800/ 1200/1600 DPI
- Connection: 2.4G wireless
- Operating range: < 10 meters
- Interface type: USB
- Power input: 1x AA alkaline battery (included]
- Dimensions: 110 x 77 x 45 mm
- Weight: 100 g

**Keyboard**

- Connection: 2.4G | Operating range: < 10 meters
- Maximum transmitter power at 2.4 GHz – 2.4835 GHz: 1 mW
- Interface type: USB A
- Power input: 2x AAA alkaline battery (included]
- Dimensions: 453 x 212 x 27 mm
- Weight: 658 g

**System requirements:**

USB port | Windows 7/8/10 | Mac OS X

## Instructions and information regarding the disposal of used packaging materials

Dispose of packaging material at a public waste disposal site.

## Disposal of used electrical and electronic appliances

The meaning of the symbol on the product, its accessory or packaging indicates that this product shall not be treated as household waste. Please, dispose of this product at your applicable collection point for the recycling of electrical & electronic equipment waste. Alternatively in some states of the European Union or other European states you may return your products to your local retailer when buying an equivalent new product.

The correct disposal of this product will help save valuable natural resources and help in preventing the potential negative impact on the environment and human health, which could be caused as a result of improper liquidation of waste. Please ask your local authorities or the nearest waste collection centre for further details. The improper disposal of this type of waste may fall subject to national regulations and fines.

## For business entities in the European Union

If you wish to dispose of an electrical or electronic device, request the necessary information from your seller or supplier.

Disposal In other countries outside the European Union


If you wish to dispose of this product, request the necessary information about the correct disposal method from local government departments or from your seller.

This appliance complies with EU rules and regulations regarding electromagnetic and electrical safety.

Changes to the text, design and technical specifications may occur without prior notice and we reserve the right to make these changes. Hereby, FAST CR, a.s. declares that the radio equipment type YKM 2009 is in compliance with Directive 2014/53/EU.

The full text of the EU declaration of conformity is available at the following internet address: [www.yenkee.eu](http://www.yenkee.eu)

## Documents / Resources

	<p><a href="#">YENKEE YKM 2009CS Combo WL Keyboard and Mouse Sets</a> [pdf] Instruction Manual YKM 2009CS, Combo WL Keyboard and Mouse Sets, YKM 2009CS Combo WL Keyboard and Mouse Sets, Keyboard and Mouse Sets, Mouse Sets, Sets</p>
-------------------------------------------------------------------------------------	---------------------------------------------------------------------------------------------------------------------------------------------------------------------------------------------------------------------------------------------