



YEEZOO Two Steps Stool with Handle Installation Guide

[Home](#) » [YEEZOO](#) » YEEZOO Two Steps Stool with Handle Installation Guide 

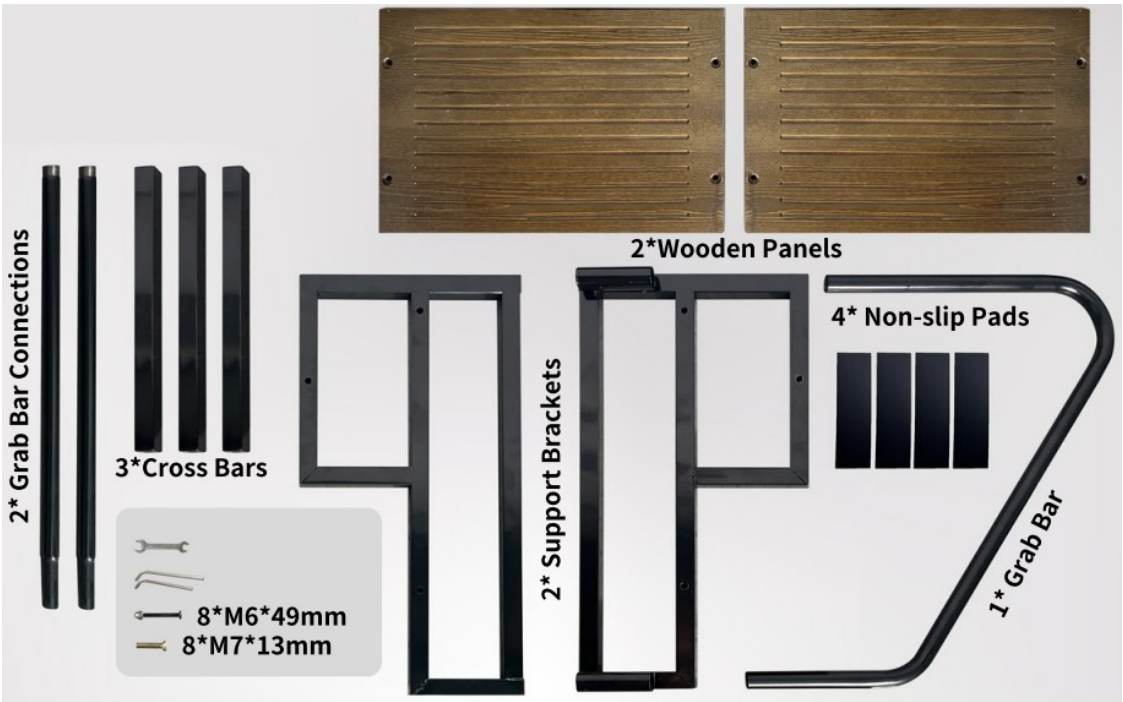
YEEZOO

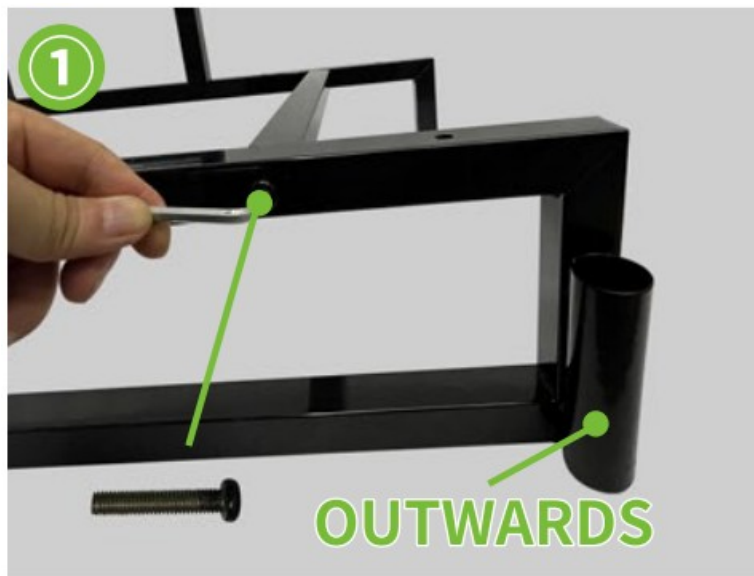
Two Steps Stool with Handle
Installation Guide

Contents

- [1 ASSEMBLY INSTRUCTION](#)
- [2 Documents / Resources](#)
 - [2.1 References](#)

ASSEMBLY INSTRUCTION





INSTALL THE FIRST CROSS BAR

- Handrail holders must face outwards.
- Use two M7*13mm screws and hex wrench.



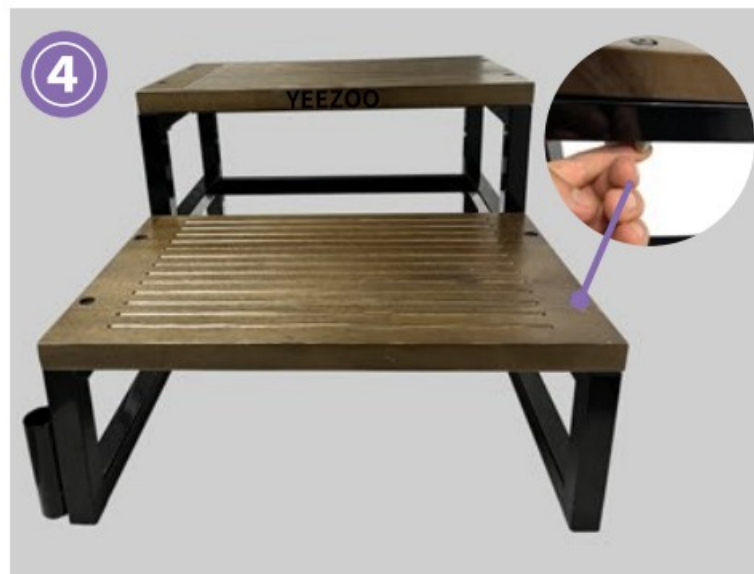
INSTALL THE OTHERS TWO CROSS BARS

1. Use four M7*13mm screws and hex wrench.
2. Tighten the three cross bars and keep them level.



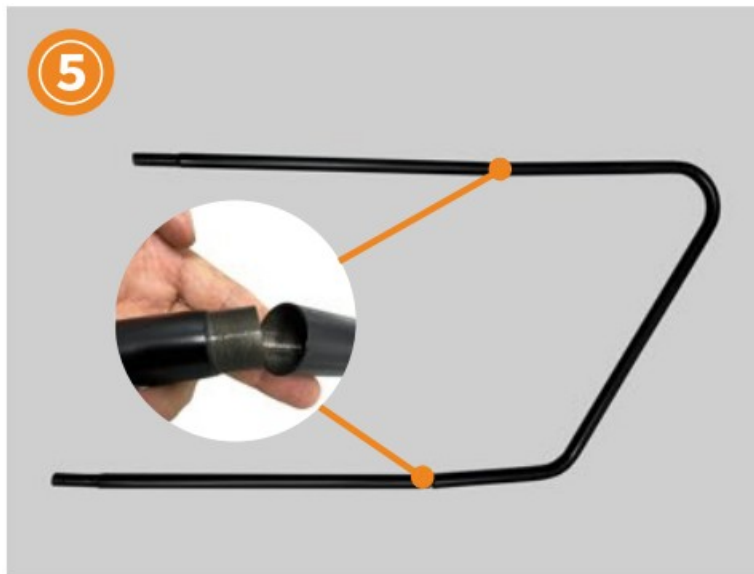
INSTALL THE UPPER WOODEN PANEL

- The panel with logo“YEEZOO” is the upper panel, logo outwards.
- Four countersinks face upwards.
- Use four M6*49mm screws and hex wrench to fix the panel.



INSTALL THE FIRST WOODEN PANEL

- Use four M6*49mm screws and hex wrench to fix the panel.
- Check and tighten all screws.



CONNECT THE DETACHABLE HANDRAIL

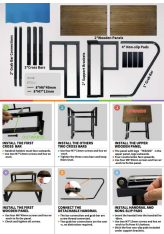
- The bar connection and grab bar are screw thread connected.
- Two grab bar connections are the same, no distinction required.



INSTALL HANDRAIL AND NONS-SLIP PADS

- Insert the handrail into the handrail holders.
- Use two M7*13mm screws and hex wrench to fix from it's bottom.
- Stick the four non-slip pads included under support brackets.

YEEZOO



[YEEZOO Two Steps Stool with Handle](#) [pdf] Installation Guide

Two Steps Stool with Handle, Steps Stool with Handle, Stool with Handle, Handle

References

- [User Manual](#)

[Manuals+](#), [Privacy Policy](#)

This website is an independent publication and is neither affiliated with nor endorsed by any of the trademark owners. The "Bluetooth®" word mark and logos are registered trademarks owned by Bluetooth SIG, Inc. The "Wi-Fi®" word mark and logos are registered trademarks owned by the Wi-Fi Alliance. Any use of these marks on this website does not imply any affiliation with or endorsement.