



# Yeedi CH1918 Self Empty Station Instruction Manual

[Home](#) » [yeedi](#) » Yeedi CH1918 Self Empty Station Instruction Manual 



## INSTRUCTION MANUAL Self-empty Station

### Contents

- [1 Important Safety Instructions](#)
- [2 SAVE THESE INSTRUCTIONS](#)
- [3 Package Contents](#)
- [4 Product Diagram](#)
- [5 Note before Using](#)
- [6 Quick Start](#)
- [7 Using Self-empty Station](#)
- [8 Maintenance](#)
- [9 Status Indicator](#)
- [10 Troubleshooting](#)
- [11 Product Specifications](#)
- [12 Documents / Resources](#)
- [13 Related Posts](#)

## Important Safety Instructions

### IMPORTANT SAFETY INSTRUCTIONS

When using an electrical appliance, basic precautions should always be followed, including the following:

**READ ALL INSTRUCTIONS BEFORE USING (THIS APPLIANCE)**

**Warning:** Changes or modifications to this unit not expressly approved by the party responsible for compliance could void the user's authority to operate the equipment

**WARNING** To reduce the risk of fire, electric shock, or injury:

1. For INDOOR household use ONLY Do not use outdoors or on wet surfaces
2. Do not allow to be used as a toy Close attention is necessary when used by or near children
3. The appliance is not to be used by persons (including children) with reduced physical, sensory or mental capabilities, or lack of experience and knowledge, unless they have been given supervision or instruction Children should be supervised not to play with the appliance
4. Use only as described in this manual Use only manufacturer's recommended attachments
5. Do not use with a damaged cord or plug If the appliance is not working as it should, has been dropped, damaged, left outdoors, or dropped into water, return it to a service center
6. Do not pull or carry by cord, use cord as a handle, close a door on cord, or pull cord around sharp edges or corners Do not run appliance over cord Keep cord away from heated surfaces
7. Do not unplug by pulling on the cord To unplug, grasp the plug, not the cord
8. Do not handle plug or appliance with wet hands
9. Do not put any object into openings Do not use with any opening blocked; keep free of dust, lint, hair, and anything that may reduce air flow
10. Keep hair, loose clothing, fingers, and all parts of the body away from openings and moving parts
11. Do not use to pick up flammable or combustible liquids, such as gasoline, or use in areas where they may be present
12. Do not use without a dust bag and/or filters in place
13. Do not pick up anything that is burning or smoking, such as cigarettes, matches, or hot ashes
14. Please make sure your power supply voltage matches the power voltage marked on the Docking Station
15. Do not use in extremely hot or cold environments (below -5°C/23°F or above 40°C/104°F)
16. The Docking Station is not to be repaired and not to be used any longer if it is damaged or defective
17. The Docking Station must be used in accordance with the directions in this Instruction Manual yeedi cannot be held liable or responsible for any damages or injuries caused by improper use
18. Do not charge non-rechargeable batteries
19. Unplug from outlet when not in use and before servicing

## **SAVE THESE INSTRUCTIONS**

To reduce the risk of electric shock, this appliance has a polarized plug (one blade is wider than the other) This plug will fit in a polarized outlet only one way If the plug does not fit fully in the outlet, reverse the plug If it still does not fit, contact a qualified electrician to install the proper outlet Do not change the plugin anyway.

**NOTE:** This equipment has been tested and found to comply with the limits for a Class B digital device, pursuant to Part 15 of the FCC Rules These limits are designed to provide reasonable protection against harmful interference in a residential installation This equipment generates, uses, and can radiate radio frequency energy and, if not installed and used in accordance with the instructions, may cause harmful interference to radio communications.

However, there is no guarantee that interference will not occur in a particular installation If this equipment does cause harmful interference to radio or television reception, which can be determined by turning the equipment off and on, the user is encouraged to try to correct the interference by one or more of the following measures:

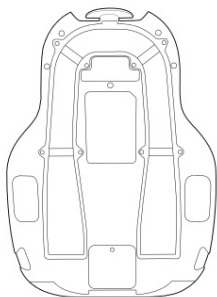
- Reorient or relocate the receiving antenna
- Increase the separation between the equipment and receiver
- Connect the equipment into an outlet on a circuit different from that to which the receiver is connected

- Consult the dealer or an experienced radio/TV technician for help

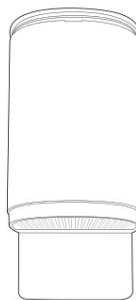
## Package Contents



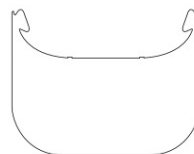
Instruction Manual



Base



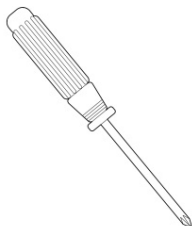
Dust Container



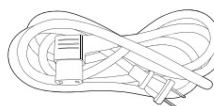
Ramp Extension  
(For carpet use only)



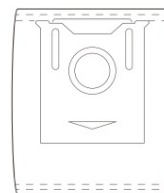
Base Socket Screws



Screw Driver



Power Cord

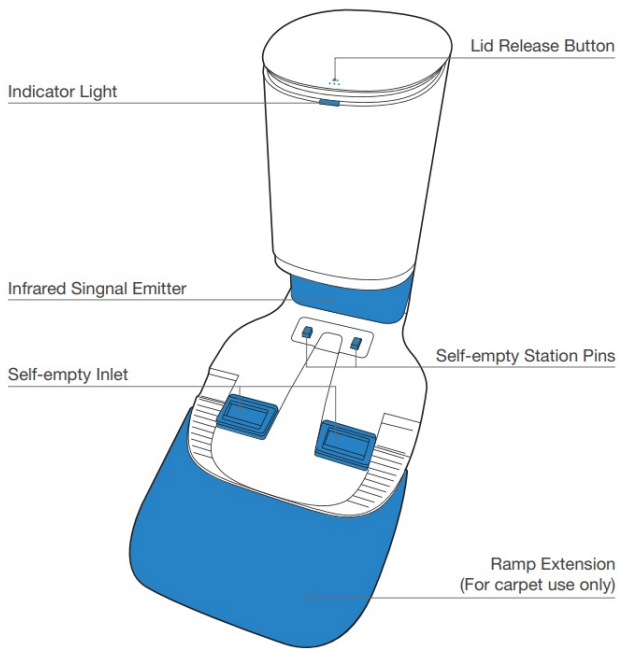


Dust Bag

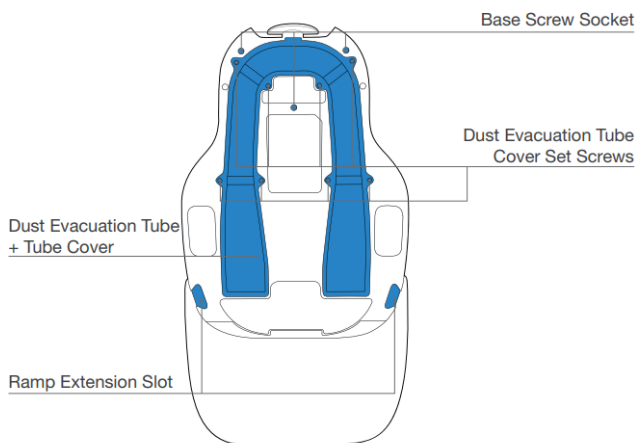
**Note:** Figures and illustrations are for reference only and may differ from actual product appearance. Product design and specifications are subject to changes without notice.

## Product Diagram

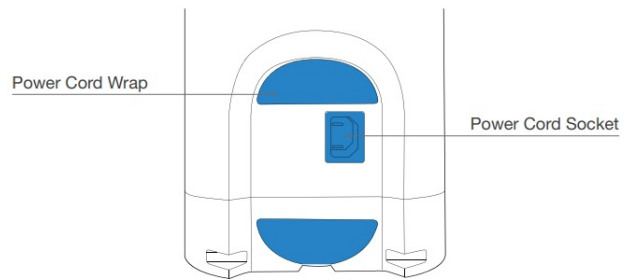
### Self-empty Station



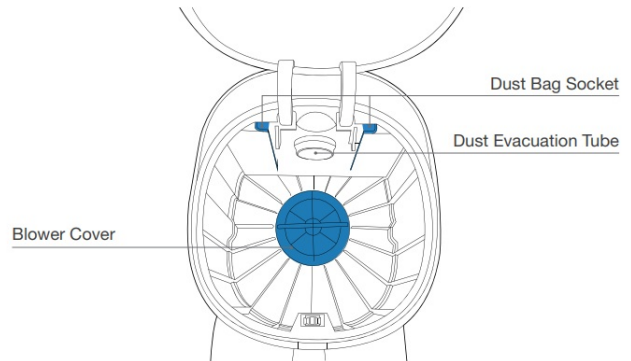
### Self-empty Station (Bottom)



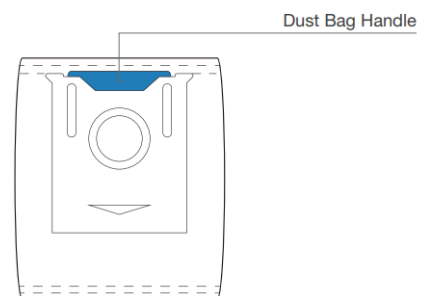
### Self-empty Station (Back)



### Self-empty Station (Top)

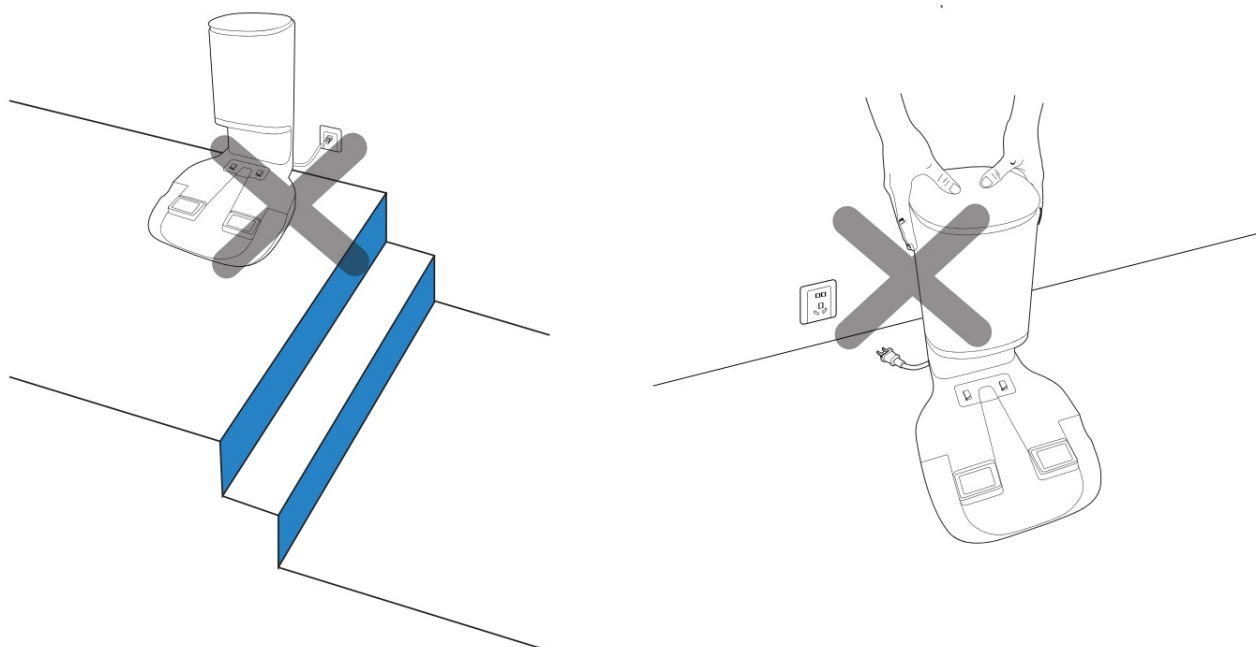


### Dust Bag



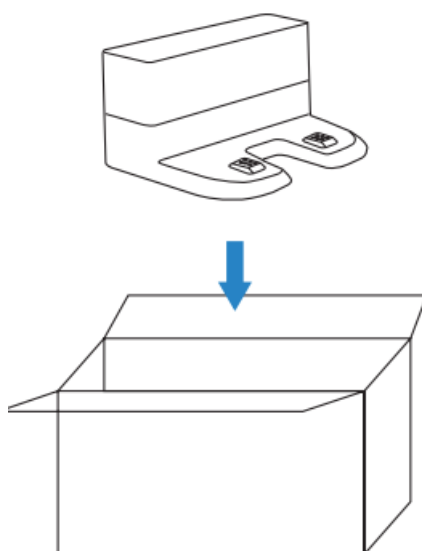
## Note before Using

1. Do not place the Self-empty Station near stairs or a drop off to prevent Robot from falling over the edge
2. In order to make sure the Robot returns to the station successfully, avoid picking up and moving the Self-empty Station during the cleaning. If the Self-empty Station is moved, Robot may fail to locate itself and lose the map

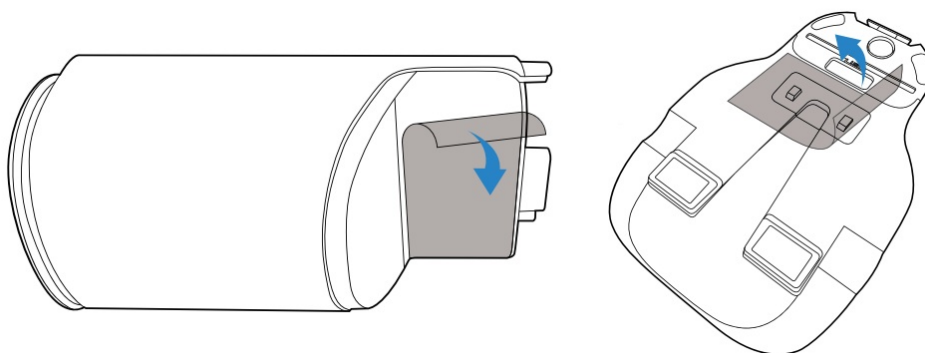


## Quick Start

### 1. Put Away the Original Docking Station

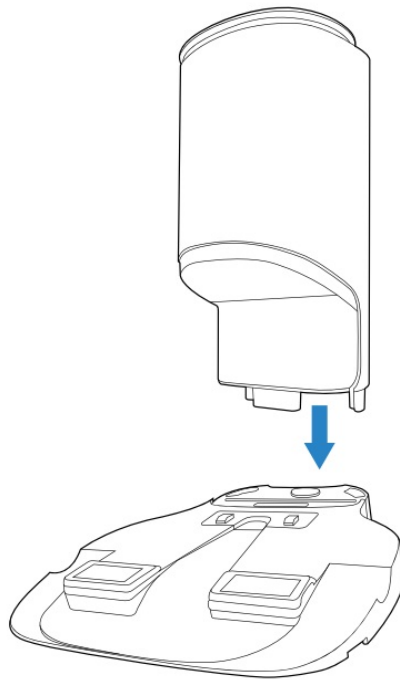


### 2. Remove Protection Films



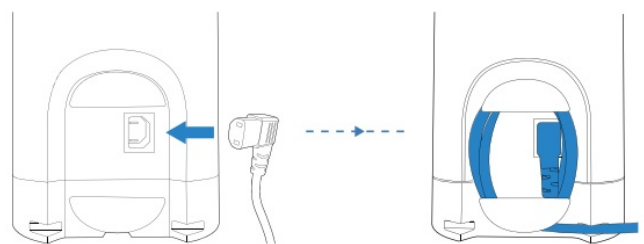
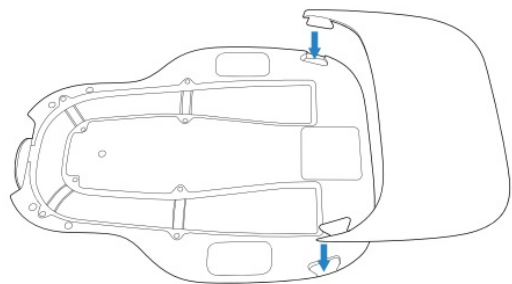
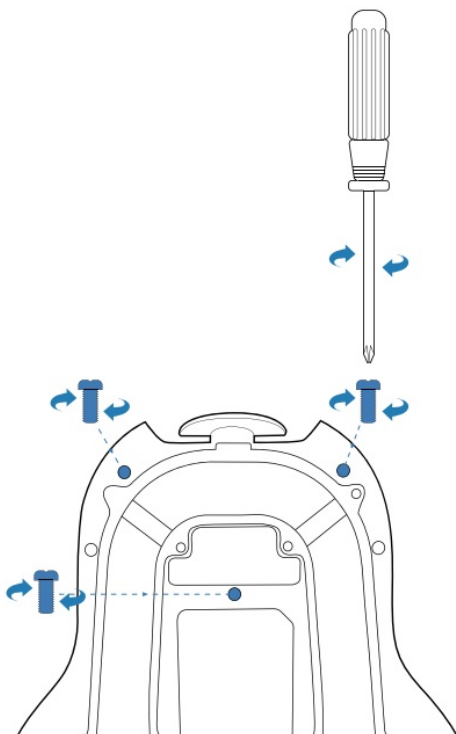
### 3. Connect the Dust Container and the Base

### 4.



Tighten the Base Socket Set Screws

5. For carpet use only

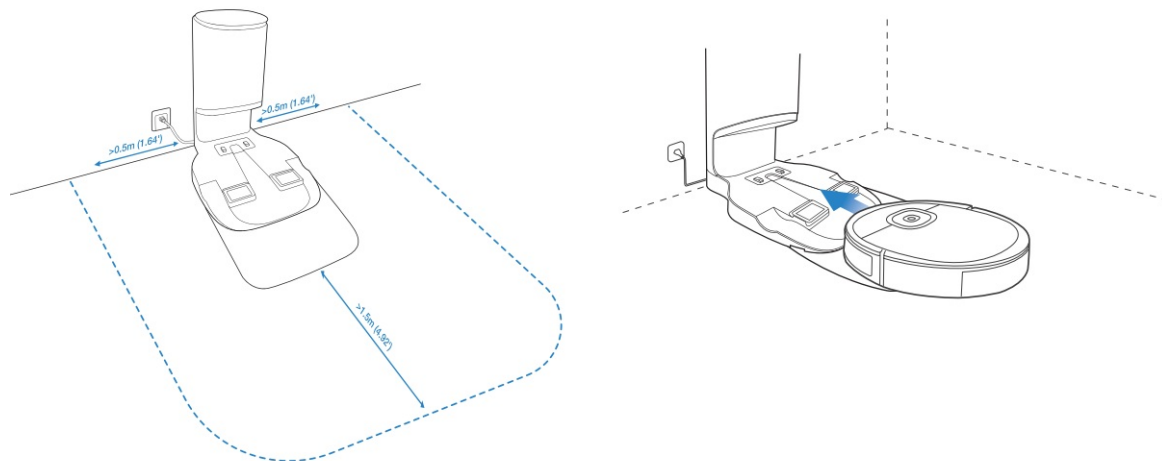


6. Connect Power Cord

7. Place Self-empty Station

8. **Charge Robot**

\* Before first use, please power ON Robot and place Robot on the Self-empty Station to charge. Make sure Robot starts cleaning from the Self-empty Station to help Robot return to charge successfully.



## Using Self-empty Station

### 2.3 Charging and Self-emptying

When Self-empty Station is connected to power, Robot automatically returns to the station to charge and empty the Dust Bin as it needs

\* Empty remaining water from the reservoir and remove the reservoir and the Cleaning Cloth Plate before charging Robot

## Maintenance

### 3.1 Regular Maintenance

To keep Robot and Self-empty Station running at peak performance, perform maintenance tasks and replace parts with the following frequencies:

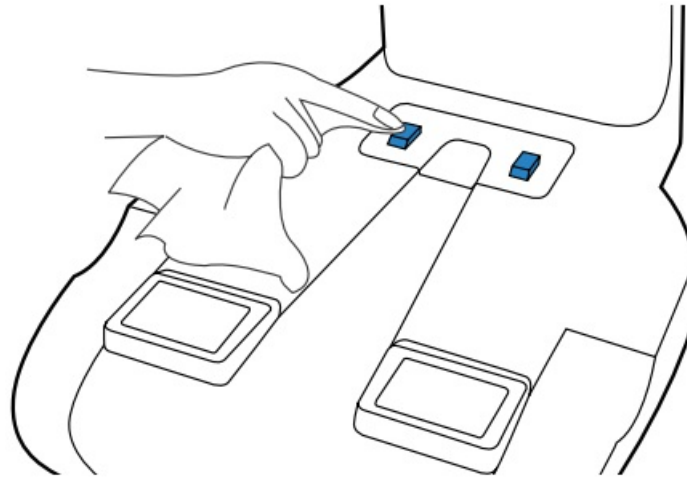
Part	Maintenance Frequency	Replacement Frequency
Dust Bag	/	Dust Bags should be replaced when prompted by the need APP.
Infrared Signal Emitter	Once per week	/
Self-empty Station Pins	Once per week	/
Sponge Filter	Once per week	Every 3-6 months
High-Efficiency Filter	Once per week	Every 3-6 months

Note: need manufactures various replacement parts and fittings Please contact Customer Service for more information on replacement parts

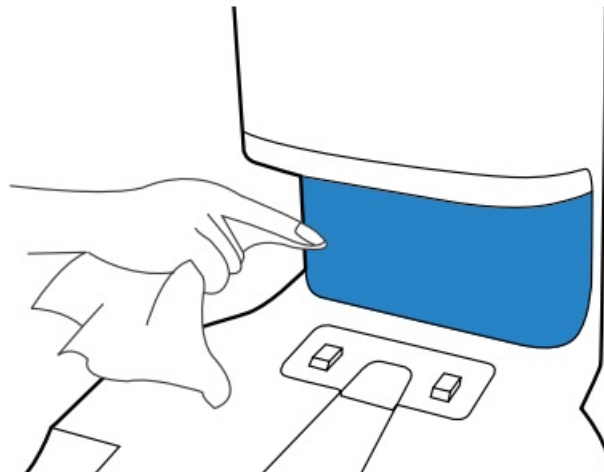
### 3.2 Self-empty Station

**Note:** Before performing cleaning and maintenance on Self-empty Station, unplug it first Clean with a clean dry cloth, and avoid using any detergent or cleaning spray

#### 1. Self-empty Station Pins



## 2. Infrared Signal Emitter



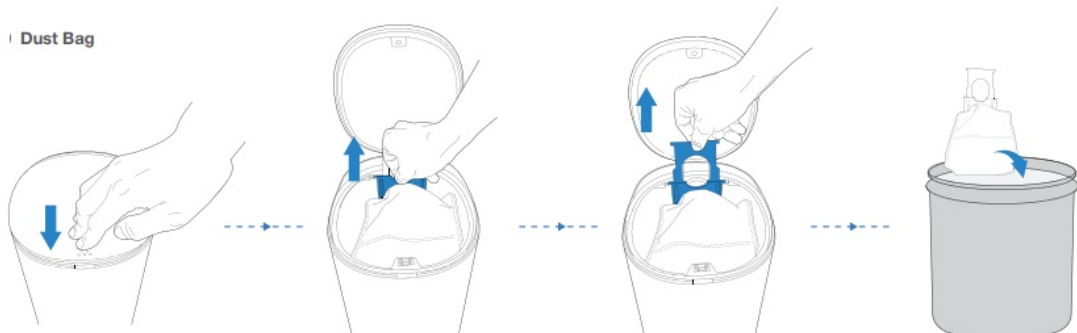
## 3. Dust Bag

## 4. Wipe the Blower Cover Clean

## 5. Install Dust Bag

## 6. Press to Close the Lid

Dust Bag

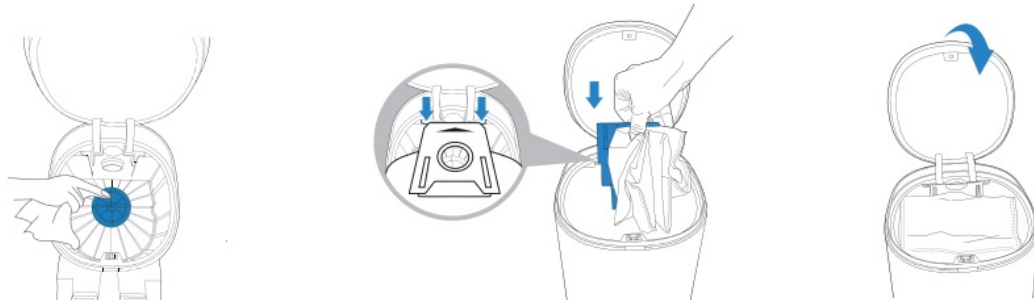


\* The Dust Bag will be sealed by the handle so the dust will not leak.

Wipe the Blower Cover Clean

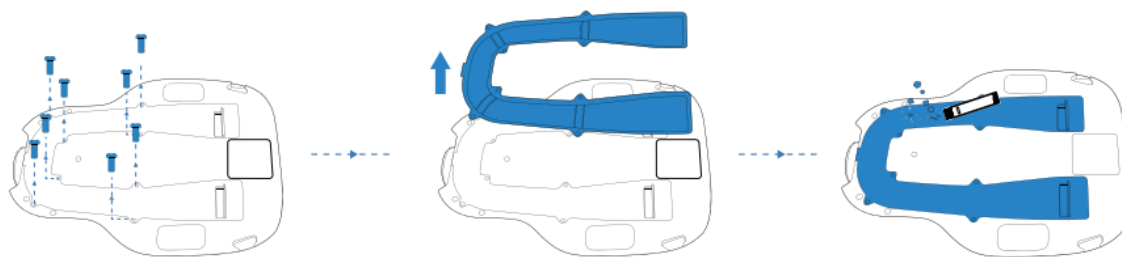
Install Dust Bag

Press to Close the Lid



## 7. Dust Evacuation Tube





## Status Indicator


The light effect of the Status Indicator on Self-empty Station corresponds to different conditions and solutions For more support, please refer to yeedi App or the Troubleshooting Section of this manual

Light Effect	Status	Solutions
Indicator light off	The Self-empty Station is in standby.	/
	The robot is in Do Not Disturb Mode.	/
Glowing a solid WHITE	The robot returns to the Self-empty Station and starts to Self-empty.	/
	The robot is Self-emptying.	/
	The Self-empty Station's suction power decreased.	Please check the Dust Bag.
Glowing a solid RED	The Dust Bag is not installed.	Please install the Dust Bag.
	The Self-empty Station failed to Self-empty the dust.	Please check the solution in the App.
	The Dust Container Lid is not closed.	Please make sure the Dust Container Lid is firmly closed.


## Troubleshooting

No.	Problem	Possible Cause	Solution
	The robot does not start Self-emptying after returning to the Self-empty Station.	The Dust Container Lid is not closed.	Close the Dust Container Lid.
		The Dust Bag is not installed to the Self-empty Station.	Install the Dust Bag and close the Dust Container Lid.
		Manually moving Robot to the Self-empty Station will not trigger Self-emptying.	In order to make sure Robot starts Self-emptying successfully, avoid picking up and moving the Self-empty Station during the cleaning.
		The robot returns to the Self-emptying Station running Video Manager in the App.	This is normal.
		Do Not Disturb mode is enabled in the App.	This is normal. Disable Do Not Disturb mode in the App, or start Self-emptying manually.
		The Dust Bag is full.	Replace the Dust Bag and close the Dust Container Lid.
		If the possible causes are excluded, it might be a component malfunction.	Please contact customer service.
2	Robot fails to Self-empty the Dust Bin.	The Self-empty Dust Bin is not installed.	Please install the Self-empty Dust Bin with two Self-empty Outlets on the bottom.
		The Dust Bag is full.	Replace the Dust Bag and close the Dust Container Lid.
		The Self-empty Outlets on the Self-empty Dust Bin is stuck by debris.	Uninstall the Self-empty Dust Bin and clean the debris on the Self-empty Outlets.
		Dust Evacuation Tube is blocked.	Clean the Dust Evacuation Tube.
3	There is debris in the Dust Container.	Fine particles are absorbed inside the Dust Container through the Dust Bag.	Clean the Dust Container Lid and inner wall.
		The Dust Bag is damaged.	Check the Dust Bag and replace it.
4	Robot leaks dust or debris while cleaning.	The Self-empty Outlets are stuck by debris.	Uninstall the Self-empty Dust Bin and clear the debris.
5	The Base is dirty.	Main Brush has debris on it and requires cleaning.	Clean the Main Brush.

## Product Specifications

Model	CH1918
Rated Input	120V ~ 50-60Hz 8A
Rated Output (Charging)	20V  1A

Documents / Resources

	<p><a href="#">Yeedi CH1918 Self Empty Station</a> [pdf] Instruction Manual CH1918, 2AZMB-CH1918, 2AZMBCH1918, CH1918, Self Empty Station</p>
---	---