



Yealink MVC860-C3-211 Room System for MS Teams User Guide

[Home](#) » [Yealink](#) » Yealink MVC860-C3-211 Room System for MS Teams User Guide 

Yealink MVC860-C3-211 Room System for MS Teams User Guide

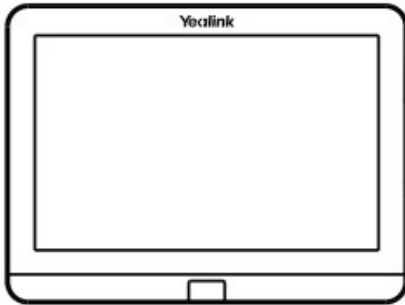


Contents

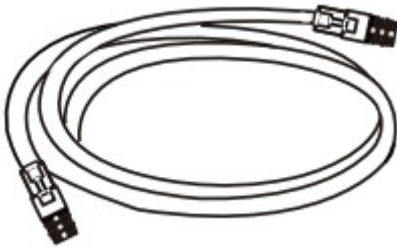
- 1 Package Contents
- 2 MTouchII Connection
- 3 MTouchII Installation
- 4 Hardware Interface Instructions
- 5 Wireless Presentation
- 6 LED Indicator Instructions
- 7 Technical Support
- 8 Documents / Resources
 - 8.1 References
- 9 Related Posts

Package Contents

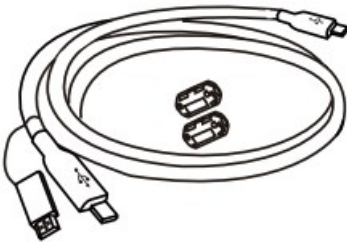
- MTouchII



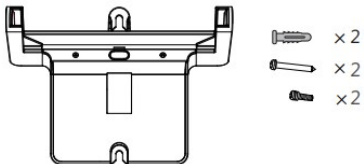
- 7.5m Ethernet Cable



- USB Type-C Cable (with an HDMI adapter)



- Mounting Bracket and Accessories



- Screwdriver

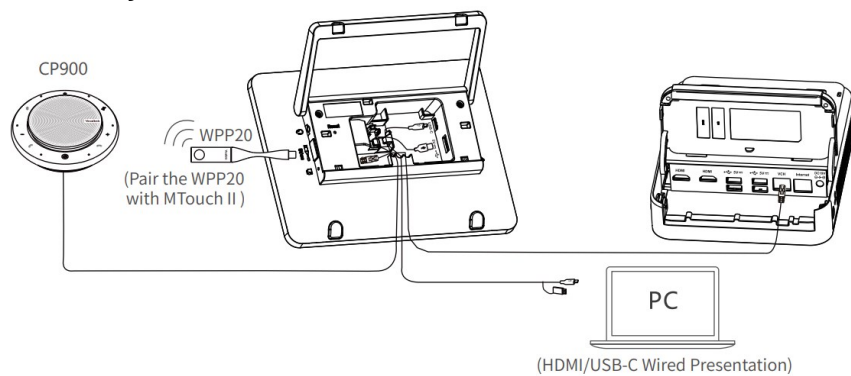


- Quick Start Guide

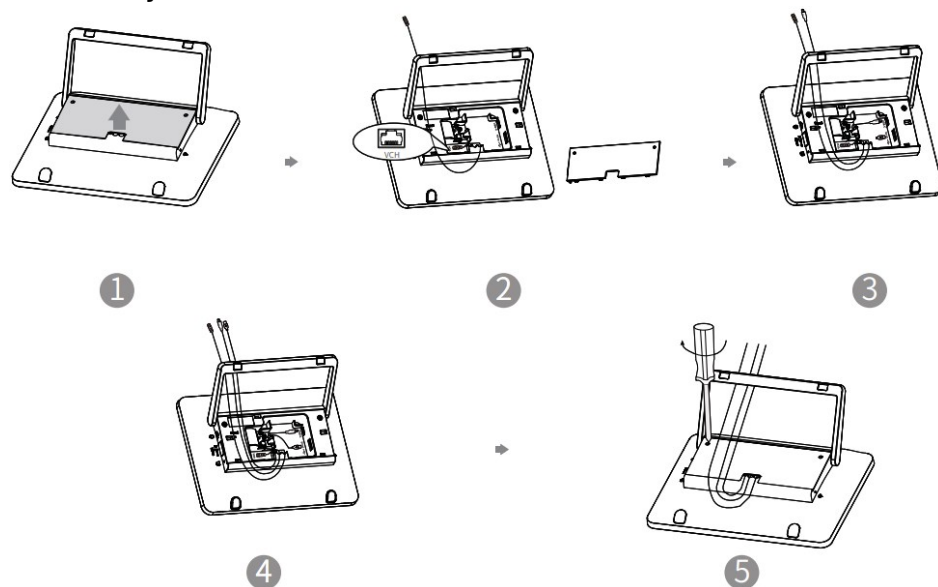


MTouchII Connection

Connect your MTouchII



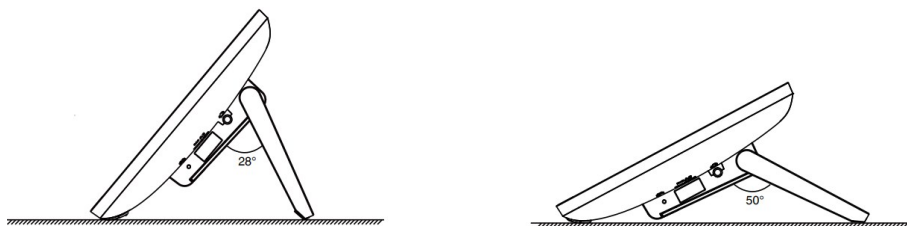
Assemble your MTouchII



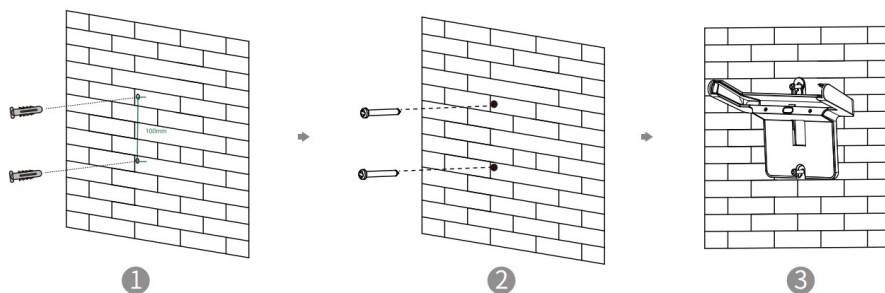
MTouchII Installation

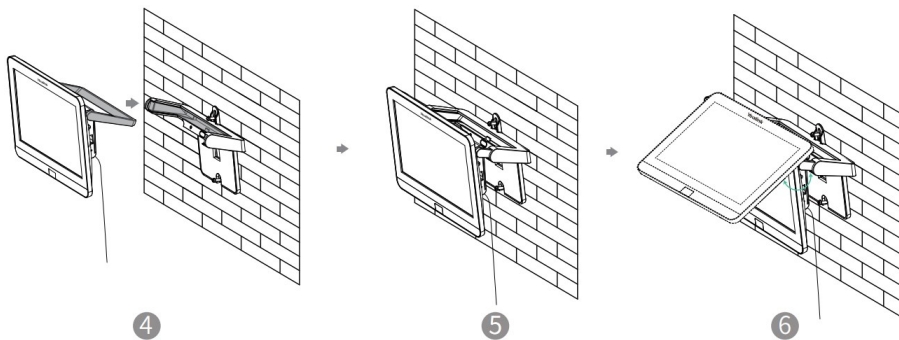
• Put on a table

You can place the system on the conference room table and adjust the touch screen as you need.



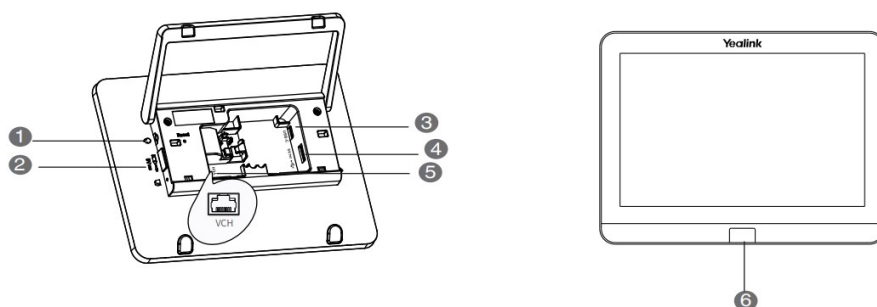
• Mount on a Wall





If the conference room environment allows, you can also route the Thoroughgoing the wall.

Hardware Interface Instructions




No.	Port	Description
①	3.5mm Headset	Connect to a headset.
②	USB-A Port	Connect to the WPP20 to pair with WPP20 for wireless sharing.
③	USB-C Port	Connect to the PC for wired sharing .
④	USB-A Port	Connect to a USB audio device, such as CP900
⑤	VCH Port	Connect to the MCore, and the MT ouchII is powered by the MCore
⑥	Human Motion Senso	The motion detection sensor, integrated in the front of the device, is used to automatically wake up the Yealink MVC system and light up the touch screen when you approach the touch screen.

Wireless Presentation

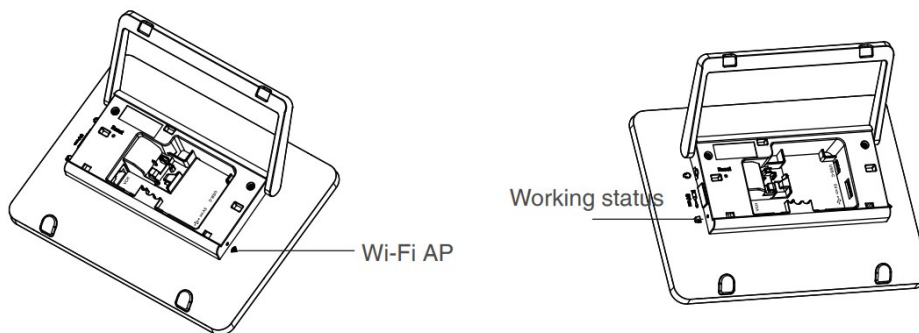
You can use Yealink WPP20 wireless presentation pod for wireless content sharing.

Procedure

1. Connect the WPP20 to the USB port of the MTouchII.
2. Wait for about 3 seconds, and the WPP20 LED indicator glows green. The WPP20 is paired with the MTouchII successfully.
3. Connect the WPP20 to the PC.
4. If the WPP20 is first connected to the computer, you need to manually start the Yealink Wireless Presentation Pod software from This PC in Windows 10 or from My Computer in Windows 7 and then upgrade the WPP20.
 - After starting the software, if it prompts that the firmware is different from the host version, you need to upgrade the WPP20 according to the prompts.
 - For the WPP20 running older versions, after starting the software, you need to manually upgrade the firmware on the software at the path of  **Version Update**.

After the upgrade is successful, the WPP20 is ready for content sharing .
Go to Yealink website(<http://support.yealink.com>) for the latest version of the firmware.

LED Indicator Instructions



• LED Indicator of Working Status

LED Status	Description
Solid yellow	MTouchII is not connected to a PC or you do not use WPP20 for content sharing.
Solid green	MTouchII is connected to a PC for wired sharing or you use WPP20 for wireless sharing.
Solid red	MTouchII is in sleep mode.
Fast-flashing yellow	MTouchII is upgrading firmware
Slow-flashing red	Failed to upgrade firmware.

• Wi-Fi AP LED Indicator

LED Status	Description
Solid green	The WPP20 has been paired with the MTouchII and is connected to a PC for content sharing
Solid yellow	The WPP20 is not connected to the MTouchII.
Solid red	MTouchII is in sleep mode.

About Yealink

Yealink is a global leading provider of enterprise communication and collaboration solutions, offering video conferencing service to worldwide enterprises. Focusing on research and development, Yealink also insists on innovation and creation. With the outstanding technical patents of cloud computing, audio, video and image processing technology, Yealink has built up a panoramic collaboration solution of audio and video conferencing by merging its cloud services with a series of endpoints products. As one of the best providers in more than 140 countries and regions including the US, the UK and Australia, Yealink ranks No.1 in the global market share of SIP phones shipments.

Technical Support


Visit Yealink WIKI (<http://support.yealink.com/>) for the latest firmware, guides, FAQ, Product documents, and more. For better service, we sincerely recommend you to use Yealink Ticketing system (<https://ticket.yealink.com>) to submit all your technical issues.

Web: www.yealink.com

Copyright©2020 YEALINK(XIAMEN) NETWORK TECHNOLOGY CO.,LTD.All rights reserved.

Yealink

Documents / Resources

	<p>Yealink MVC860-C3-211 Room System for MS Teams [pdf] User Guide MVC860-C3-211 Room System for MS Teams, MVC860-C3-211, Room System for MS Teams, System for MS Teams, MS Teams</p>
---	---

References

- [Yealink Support](#)
- [Yealink Support](#)
- [Yealink Support](#)
- [Yealink | UC & C Terminal, Video Collaboration, Conference Phone, IP Phone, Headsets & Video Conferencing](#)
- [Yealink Ticket](#)

