



# Yealink MVC640-C4-000 Teams Rooms System For Medium Instruction Manual

[Home](#) » [Yealink](#) » Yealink MVC640-C4-000 Teams Rooms System For Medium Instruction Manual 



MVC640-C4-000

## Minimum Requirements

- A display connected to MCore Pro (not included).
- A Microsoft Teams Rooms or Skype® for Business account (not included).
- Wired network environment (not included).

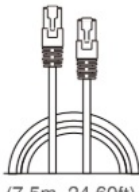
### Contents

- [1 Package Contents](#)
- [2 Install MVC640-C4-000](#)
- [3 Initial Setup](#)
- [4 Features](#)
- [5 Supported Accessories](#)
- [6 Documents / Resources](#)
  - [6.1 References](#)
- [7 Related Posts](#)

## Package Contents



UVC84



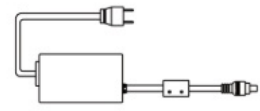
(7.5m, 24.60ft)

CAT5e UTP (RJ45 - RJ45) Cable



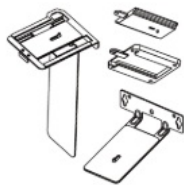
(2.5m, 8.20ft)

USB 2.0 (A - B) Cable



(3.5m, 11.48ft)

Power Adapter (48V/0.7A)



Mounting Bracket



× 4

Φ 6 \* 30 mm, white, Polyamide



× 4

4\*30 FAHOZN3+ (+)



× 5

1/4" -20 UNC



× 2

M3\*5.8KM0ZN3+



VCR20 Remote Control



× 5

(20 \* 200 mm)

Cable Ties



Quick Start Guide

### UVC84 Package



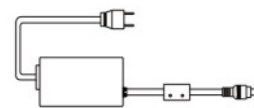
MCore Pro



(1.8 m, 5.91 ft)

× 3

HDMI Cable



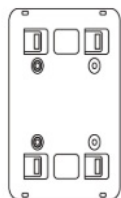
(2.1m, 6.89ft)

Power Adapter (19V/4.74A)



(WH-85\*3.0mm)

Screwdriver



(150\*117\*15mm)

Mounting Bracket



× 4

Φ 6 \* 30 mm, white, Polyamide



× 4

4\*30 FAHOZN3+ (+)



× 2

3\*6PMOZN3+



× 2

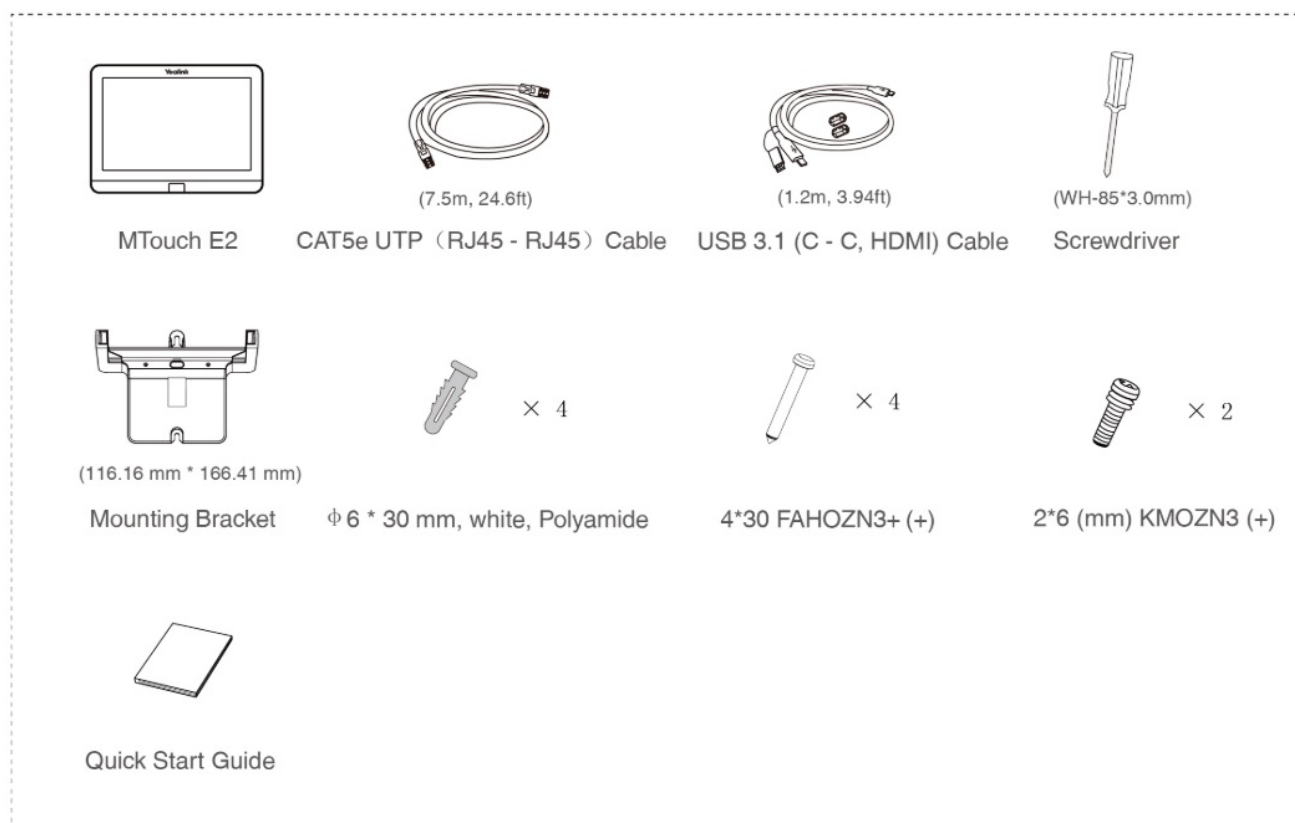
(W25.4\*L50mm,3M)

Velcro



Quick Start Guide

### MCore Pro Package



## MTouch E2 Package

### Install MVC640-C4-000

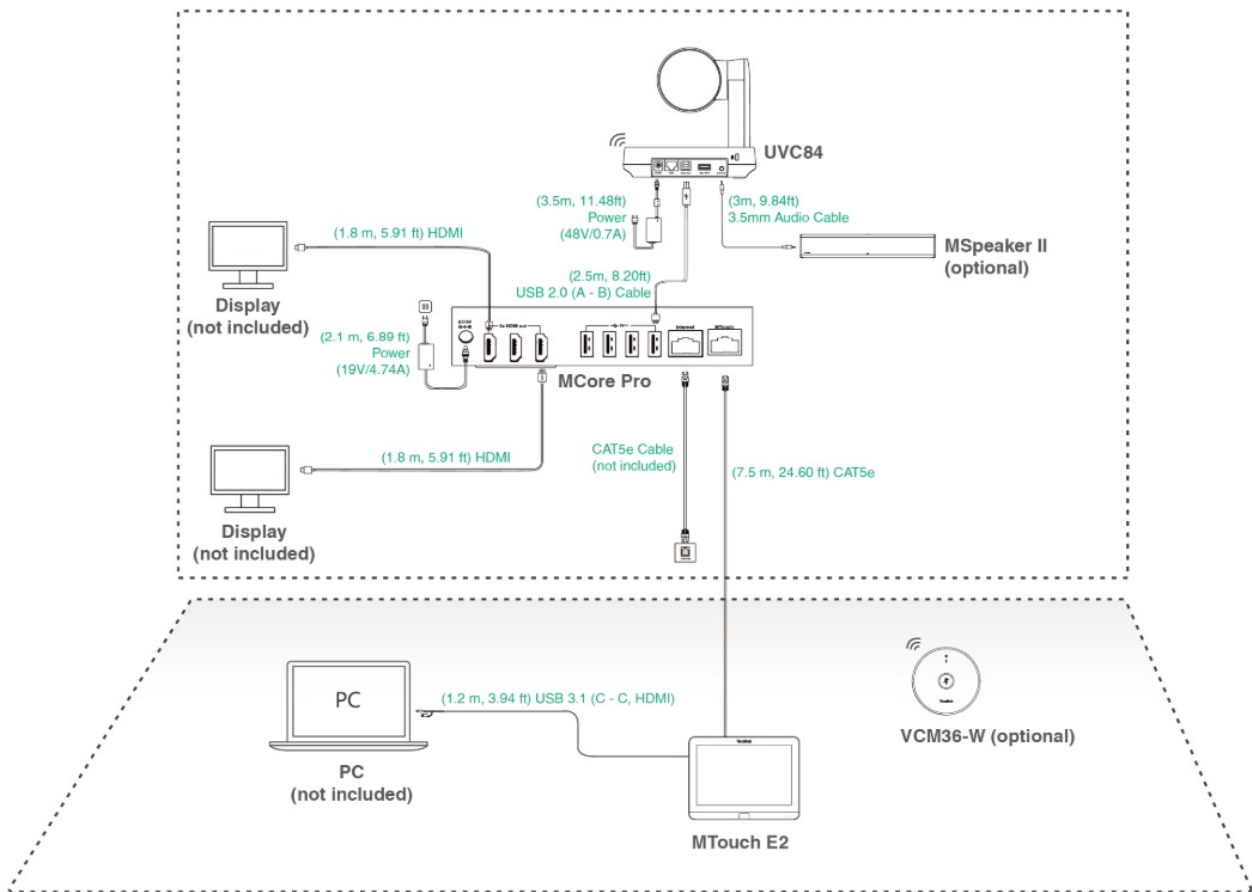
MCore Pro supports: mount on the wall, mount on the TV, stick to the table.

MTouch E2 supports: put on a table, mount on a wall.

UVC84 supports: put on a flat surface, mount on top of a display, mount on the wall, mount on the ceiling, mount on the TV mount.

Install and deploy the accessories in the system according to the environment and actual needs. For how to install and deploy, please refer to the quick start guide for each product.

### Connect MVC640-C4-000



## NOTE

- When starting up the system for the first time, you need to connect a mouse to complete the initial configuration. We recommend using the wireless mouse and keyboard kit.
- Not included accessories requirements:
  - Display: Resolution of 1080p or higher and with an HDMI port.
  - PC: Equipped with HDMI or USB-C (support DP protocol) Port.
  - Ethernet cable: CAT5e or higher ethernet cable.
  - HDMI: Standard HDMI cable.
  - PoE switch: If you use PoE to connect speakers or cameras, you need to use PoE+.

## Initial Setup

1. Press the power button on the bottom left of MCore Pro, and the Microsoft Windows 10 IoT Enterprise Edition operating system will be automatically loaded after starting MCore Pro.

## NOTE

When starting up the system for the first time, you need to connect a mouse to complete the initial configuration. We recommend using the wireless mouse and keyboard kit. After the system is initialized, you can use MTouch E2 to complete the system login and settings, and the device will automatically start the Microsoft Teams conference system application and enter the setting page.

2. Select the check box on the EULA EULA page, and then tap NextNext.
3. Enter the account, the password on the Account Account page, and then tap NextNext. Supports Microsoft Teams Rooms or Skype® for Business accounts.

- 4. On the Advanced Advanced page, configure the domain and tap NextNext.
- 5. Tap Finish Finish to complete the setup wizard.

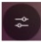
Features

Wireless Sharing

- 1. Connect the WPP30 to the USB port of the MTouch E2.  
When pairing, the LED indicator of WPP30 is orange. When the pairing is successful, the LED indicator turns green breathing light.
- 2. Connect the paired WPP30 to the USB-A/USB-C port on your PC.
- 3. On the WPP30, press the presentation button to share the full screen.




Control UVC84 Camera Position

- 1. Tap More >  to enter the Camera Control page.

Supported Accessories

For the compatible devices and the maximum number of compatible devices, please refer to [Yealink Support](#).

Documents / Resources

	<p><a href="#">Yealink MVC640-C4-000 Teams Rooms System For Medium</a> [pdf] Instruction Manual MVC640-C4-000 Teams Rooms System For Medium, MVC640-C4-000, Teams Rooms System For Medium, Rooms System For Medium, System For Medium, Medium</p>
---	---

References

- [User Manual](#)

[Manuals+](#), [Privacy Policy](#)

This website is an independent publication and is neither affiliated with nor endorsed by any of the trademark owners. The "Bluetooth®" word mark and logos are registered trademarks owned by Bluetooth SIG, Inc. The "Wi-Fi®" word mark and logos are registered trademarks owned by the Wi-Fi Alliance. Any use of these marks on this website does not imply any affiliation with or endorsement.