



[Home](#) » [YARDWORKS](#) » **Yardworks 267-2903 20 Volt Cordless String Trimmer and Edger**
Instruction Manual 

Contents [[hide](#)]

1 Yardworks 267-2903 20 Volt Cordless String Trimmer and Edger

2 READ ALL INSTRUCTIONS!

3 SAFETY SYMBOLS

4 IMPORTANT SAFETY INSTRUCTIONS

4.1 FOR ALL TOOLS

4.2 FOR ALL BATTERY-OPERATED GARDENING TOOLS

4.3 ADDITIONAL SAFETY RULES FOR STRING

4.4 SAFETY WARNINGS FOR BATTERY PACK

5 Packing List

6 KNOW YOUR TOOLS

7 CHARGING YOUR BATTERY

7.1 BATTERY INDICATOR

7.2 CHARGER LED INDICATOR TABLE

8 ASSEMBLY

8.1 Unpacking

8.2 Fitting The Safety Guard (Fig. 1)

8.3 Fitting The Flower Guard(Fig. 2)

8.4 Fitting The Auxiliary Handle (Fig.3&4)

9 OPERATION

9.1 Setting The Length Of Trimmer(-Fig.5)

9.2 Setting The Angle Of The Cutting Head(Fig.6)

9.3 Converting To Edging Function(Fig.7)

9.4 To Install/remove Battery Pack (Fig.8)

9.5 Adjusting Cutting Line Length

9.6 Holding The String Trimmer

9.7 Tips For The Operating String

10 MAINTENANCE

10.1 Clean The String Trimmer

10.2 Sharpen The Line-cutting Blade

10.3 Storing The String Trimmer

10.4 Storing The Battery Pack

11 TROUBLESHOOTING

12 OWNER'S MANUAL

13 SPECIFICATIONS

14 Frequently Asked Questions (FAQ):

14.1 Q: Can I use a different battery pack with this trimmer?

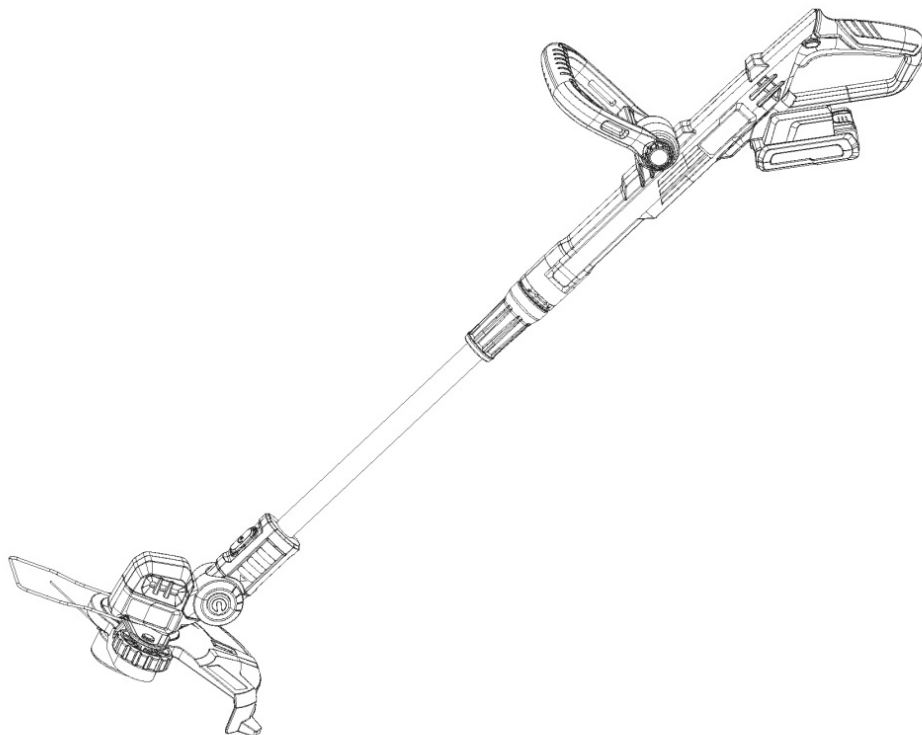
14.2 Q: How far should bystanders be kept away from the trimmer?

15 Documents / Resources

15.1 References

16 Related Posts

Yardworks 267-2903 20 Volt Cordless String Trimmer and Edger



INSTRUCTION MANUAL

TOLL-FREE HELPLINE: 1-[888-497-7273](tel:1-888-497-7273)

WARNING

Read this operator manual before using this product. Failure to do so can result in serious injury.

SAVE THIS MANUAL

READ ALL INSTRUCTIONS!









WARNING: Some dust created by power sanding, sawing, grinding, drilling and other construction activities contains chemicals known to the state of California to cause cancer, birth defects or other reproductive harm. Some examples of these chemicals are:

Lead from lead-based paints, Crystalline silica from bricks and cement and other masonry products, and Arsenic and chromium from chemically – treated lumber.

Your risk from these exposures varies, depending on how often you do this type of work. To reduce your exposure to these chemicals: work in a well-ventilated area, and work with approved safety equipment, such as those dust masks that are specially designed to filter out microscopic particles.

SAFETY SYMBOLS

This page depicts and describes safety symbols that may appear on this product. Read, understand, and follow all instructions on the machine before attempting to assemble and operate it.

	Read Operator's Manual	To reduce the risk of injury, user must read and understand operator's manual before using this product.
	Wear Eye Protection	Always wear safety goggles or safety glasses with side shields and a full-face shield when operating this product.
	Wear Ear Protection	Noise may damage your hearing. Always wear sound barriers (ear plugs or ear muffs) to protect your hearing.
	Remove Battery Pack	Remove Battery Pack before any repair or maintenance.
	Keep Bystanders Away	Keep all bystanders at least 50 ft. away.
	Wet ConditionsAlert	WARNING! Do not expose the unit to rain or wet conditions.
	Ricochet	Thrown objects can ricochet and result in personal injury or property damage.
	Recycle Symbol	This product uses lithium-ion (Li-Ion) batteries. Local, state, or federal laws may prohibit disposal of batteries in ordinary trash. Consult your local waste authority for information regarding available recycling and/or disposal options.

IMPORTANT SAFETY INSTRUCTIONS

WARNING! When using electric trimmers, basic safety precautions should always be followed to reduce the risk of fire, electric shock, and personal injury, including the following:

FOR ALL TOOLS

- 1) Avoid Dangerous Environment – Don't use tools in damp or wet locations.
- 2) Don't Use in Rain.
- 3) Keep Children Away – All visitors should be kept at a distance from work area.

- 4) Dress Properly – Do not wear loose clothing or jewelry. They can be caught in moving parts. Use of rubber gloves and substantial footwear is recommended when working outdoors. Wear protective hair covering to contain long hair.
- 5) Use Safety Glasses – Always use face or dust mask if operation is dusty.
- 6) Use Tool Properly – Do not use tool for any job except that for which it is intended.
- 7) Don't Force Tool – It will do the job better and with less likelihood of a risk of injury when used at the rate for which it was designed.
- 8) Don't Overreach – Keep proper footing and balance at all times.
- 9) Stay Alert – Watch what you are doing. Use common sense. Do not operate tool when you are tired.
- 10) Store Tools Indoors – When not in use, tools should be stored indoors in dry, and high-up or locked place – out of reach of children.
- 11) Maintain Tool with Care – Keep cutting edge sharp and clean for best performance and to reduce the risk of injury. Follow instructions for lubricating and changing accessories. Keep handles dry, clean, and free from oil and grease.
- 12) Check Damaged Parts – Before further use of the tool, a guard or other part that is damaged should be carefully checked to determine that it will operate properly and perform its intended function. Check for alignment of moving parts, binding of moving parts, breakage of parts, mounting, and any other condition that may affect its operation. A guard or other part that is damaged should be properly repaired or replaced by an authorized service center unless indicated elsewhere in this manual.

FOR ALL BATTERY-OPERATED GARDENING TOOLS

1. Prevent unintentional starting. Ensure the switch is in the off-position before connecting to battery pack, picking up or carrying the tool. Carrying the tool with your finger on the switch or tool that has the switch on, invites accidents.
2. Disconnect the battery pack from the tool before making any adjustments, changing accessories, or storing tool. Such preventive safety measures reduce the risk of starting the tool accidentally.
3. Recharge only with the charger specified by the manufacturer. A charger that is suitable for one type of battery pack may create a risk of fire when used with another battery pack.
4. Use tools only with specifically designated battery packs. Use of any other battery

packs may create a risk of injury and fire.

5. When battery pack is not in use, keep it away from other metal objects, like paper clips, coins, keys, nails, screws or other small metal objects, that can make a connection from one terminal to another. Shorting the battery terminals together may cause burns or a fire.
6. Under abusive conditions, liquid may be ejected from the battery; avoid contact. If contact accidentally occurs, flush with water. If liquid contacts eyes, additionally seek medical help. Liquid ejected from the battery may cause irritation or burns.
7. Do not use a battery pack or tool that is damaged or modified. Damaged or modified batteries may exhibit unpredictable behavior resulting in fire, explosion or risk of injury.
8. Do not expose a battery pack or tool to fire or excessive temperature. Exposure to fire or temperature above 1266°F may cause explosion.
9. Follow all charging instructions and do not charge the battery pack or tool outside of the temperature range specified in the instructions. Charging improperly or at temperatures outside of the specified range may damage the battery and increase the risk of fire.
10. Have servicing performed by a qualified repair person using only identical replacement parts. This will ensure that the safety of the product is maintained.
11. Do not modify or attempt to repair the tool or the battery pack (as applicable) except as indicated in the instructions for use and care.

ADDITIONAL SAFETY RULES FOR STRING

1. Keep guards in place and in good working order.
2. Keep hands and feet away from cutting area.
3. When replacing the cutting line, use no more than 0.065" (1.65mm) nylon line; using heavier lines than recommended by the manufacturer increases the load on the motor and reduces its operating speed. This results in overheating and damage to the trimmer.
4. Clear the area to be cut before each use. Remove all objects such as rocks, broken glass, nails, wire, or string that can be thrown or become entangled in the cutting attachment. Make sure that other persons and pets are at least 50 ft. (15m) away.
5. Always hold the trimmer firmly, with both hands on the handles, while operating. Wrap your fingers and thumbs around the handles.
6. Do not operate the trimmer while under the influence of alcohol or drugs.
7. Do not operate the trimmer in gaseous or explosive atmospheres. Motors in these

tools normally spark, and the sparks might ignite fumes.

8. Damage to Trimmer – If you strike a foreign object with the trimmer or it becomes entangled, stop the tool immediately, check for damage and have any damage repaired before further operation is attempted. Do not operate with a broken guard or spool.
9. If the equipment should start to vibrate abnormally, stop the motor and check immediately for the cause. Vibration is generally a warning of trouble. A loose head may vibrate, crack, break or come off the trimmer, which may result in serious or fatal injury. Make sure that the cutting attachment is properly fixed in position. If the head loosens after fixing it in position, replace it immediately. Never use a trimmer with a loose cutting attachment.
10. Replace a cracked, damaged or worn-out cutting head immediately, even if damage is limited to superficial cracks. Such attachments may shatter at high speed and cause serious or fatal injury.
11. Check the cutting attachment at regular short intervals during operation, or immediately if there is a noticeable change in cutting behavior.
12. Do not wash with a hose; avoid getting water in motor and electrical connections.
13. To reduce the risk of injury from loss of control, never work on a ladder or on any other insecure support. Never hold the cutting attachment above waist height.
14. If situations occur that are not covered in this manual, use care and good judgment. Contact the TOLL-FREE HELPLINE: 1-[888-497-7273](tel:888-497-7273) for assistance.

SAFETY WARNINGS FOR BATTERY PACK

1. Do not dismantle, open or shred battery pack.
2. Do not expose battery pack to heat or fire. Avoid storage in direct sunlight. The cells may explode. Check with local codes for possible special disposal instructions.
3. Do not short-circuit a battery pack. Do not store battery packs haphazardly in a box or drawer where they may short-circuit each other or be short-circuited by other metal objects. When battery pack is not in use, keep it away from other metal objects, like paper clips, coins, keys, nails, screws or other small metal objects, that can make a connection from one terminal to another. Shorting the battery terminals together may cause burns or fire.
4. Do not subject battery pack to mechanical shock.
5. Observe the plus (+) and minus (–) marks on the battery back and equipment and

ensure correct use.

6. Keep battery pack out of the reach of children.
7. Always purchase the battery pack recommended by the device manufacturer for the equipment.
8. Keep battery pack clean and dry.
9. Wipe the battery pack terminals with a clean dry cloth if they become dirty.
10. Battery pack needs to be charged before use. Always use the correct charger and refer to the manufacturer's instructions or equipment manual for proper charging instructions.
11. Do not leave battery pack on prolonged charge when not in use.
12. After extended periods of storage, it may be necessary to charge and discharge the battery pack several times to obtain maximum performance.
13. Battery pack gives its best performance when it is operated at normal room temperature ($68^{\circ}\text{F} \pm 41^{\circ}\text{F}$).
14. Use only the battery pack in the application for which it was intended.
15. Remove the battery pack from the equipment when not in use.
16. Dispose of properly.

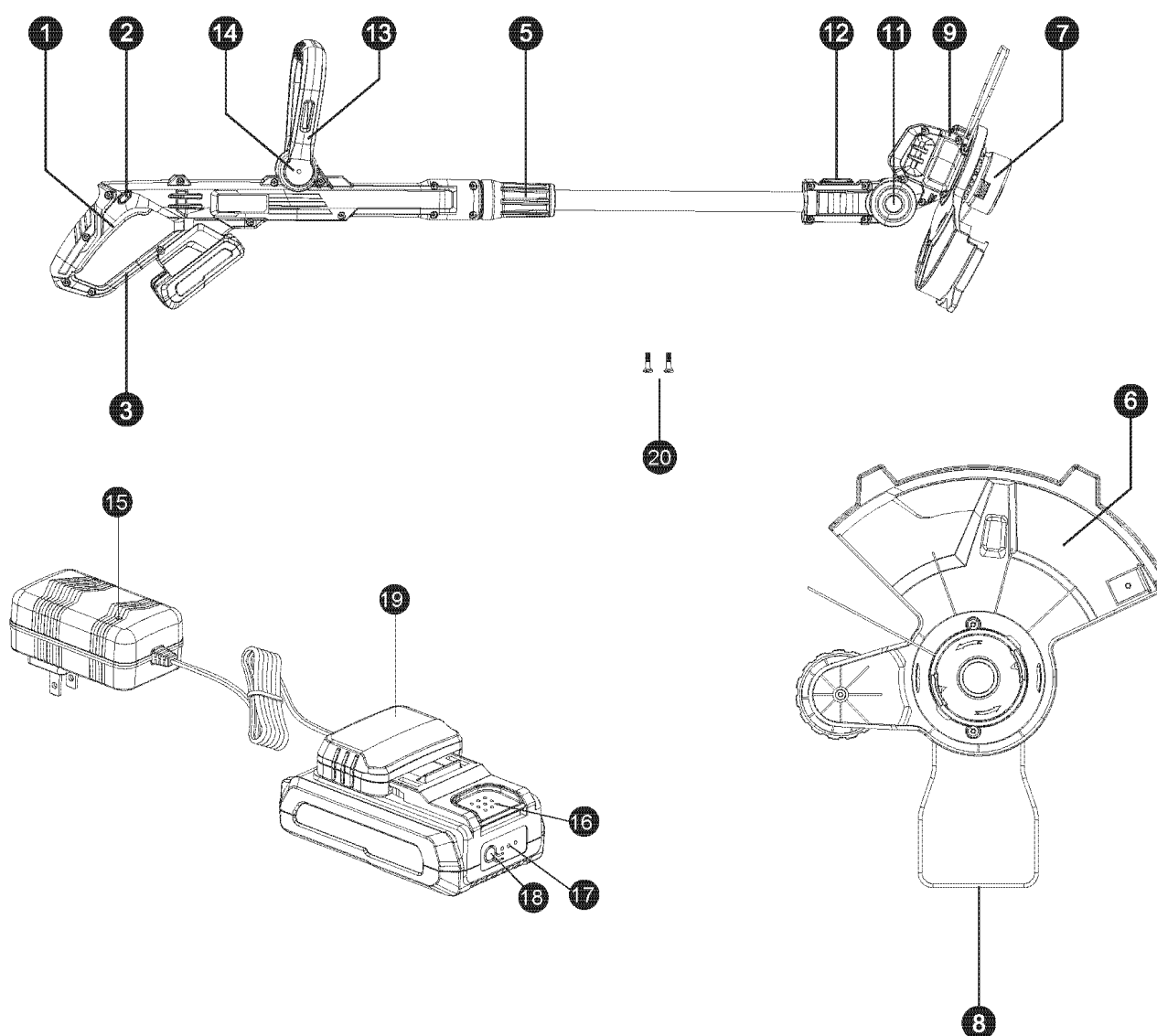
Save these instructions. Refer to them frequently and use them to instruct others who may use this tool. If you lend this tool to someone else, also lend these instructions to them to prevent misuse of the product and possible injury.

Packing List

Part Name	Quantity
String Trimmer	1pc
Safety Guard	1pc
Flower Guard	1pc
Auxiliary Handle	1pc
Bolts for Safety Guard	2pc

Battery Pack	1pc
Charger	1pc
Operator's Manual	1pc

KNOW YOUR TOOLS



1. On/off switch
2. Safety lock

3. Operating handle
4. Battery pack
5. Shaft adjustment collar
6. Safety Guard
7. Spool and line
8. Flower guard
9. Cutting head
10. Edging wheel

11. Lock for cutting head inclination
12. Edging function convert button
13. Auxiliary handle
14. Push button for adjusting front handle
15. Charging Indicator Light
16. Battery Pack Release Button
17. Battery Power Indicator Light
18. Battery Power Button
19. Charger
20. Bolts for fitting safety guard

CHARGING YOUR BATTERY

BATTERY INDICATOR

The battery pack is equipped with a push button for checking the charge level. Simply press the push button to read off the battery charge level from the LEDs of the battery indicator.

WARNING:

Do not use the charger outdoors or expose it to wet or damp conditions. Water entering the charger will increase the risk of electric shock.

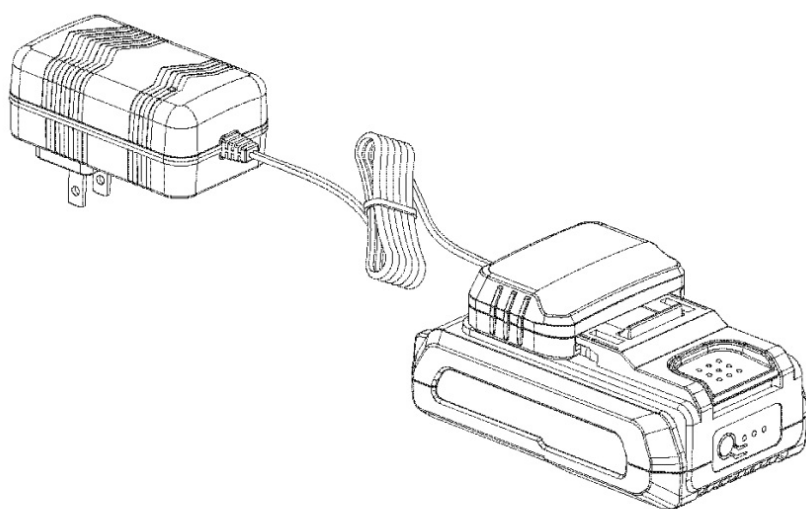
LED Indicator	Battery Charge Level/Working Conditions
----------------------	------------------------------------------------

3 lights on	$70\% < \text{Charge Level} \leq 100\%$
2 lights on	$40\% < \text{Charge Level} \leq 70\%$
1 light on	$10\% < \text{Charge Level} \leq 40\%$
1 light flashing	$\text{Charge Level} \leq 10\%$

NOTICE: Lithium-Ion battery packs are shipped partially charged. Before using it the first time, fully charge the battery pack.

NOTICE: You can only charge one battery at a time with the charger provided.

- Connect the charger to the power supply (120V~60Hz). The green charging indication LED will turn on indicating that the charger is working correctly.
- Align the raised ribs of the battery pack with the battery-mounting slots in the charger; slide the battery pack down onto the charger. The red charging LED will turn on.
- When the battery is inserted properly, the green light will quickly flash to indicate that the battery is charging. The red light on the charger will in turn on status.
- When the green light (both in charger and battery) stays on, the battery is fully charged.



NOTICE:

- The battery pack will fully charge if left on the charger, but it will not overcharge. If the battery pack remains on the charger for one month or more, it will drop to lower charge capacity. If this occurs, re-install the battery pack on the charger to recharge it fully.
- A significantly reduced run time after fully charging the battery pack indicates that the batteries are near the end of their usable life and must be replaced.
- The charger may warm during charging. This is part of the normal operation of the charger. Charge in a well-ventilated area.
- If the LED flashes when the battery pack button is pressed without charging, it indicates that the battery pack is malfunctioning or defective. In this case, do not attempt to charge the battery pack.
- If the battery pack is completely discharged and no LEDs flash when it is connected to the charger, this also indicates a malfunctioning battery pack. In this case, do not attempt to charge the battery pack.

CHARGER LED INDICATOR TABLE

Use the table below to determine charger light patterns and possible causes. For all other issues, please ask the helpline for help.

Indication	Possible Reason
<ul style="list-style-type: none"> •Red Light – Off •Green Light – On 	<ul style="list-style-type: none"> •No load charging –There's no battery inserted in the charger.
<ul style="list-style-type: none"> •Red Light – On •Green Light – Off 	<ul style="list-style-type: none"> •Normal charging – The battery is being charged.
<ul style="list-style-type: none"> •Red Light – Off •Green Light – On 	<ul style="list-style-type: none"> •Fully charged – The battery is fully charged and the charging process is finished.

ASSEMBLY

WARNING: If any parts are damaged or missing, do not operate this product until the parts are re-placed. Use of this product with damaged or missing parts could result in serious personal injury.

WARNING: Do not attempt to modify this product or create accessories not recommended for use with this string trimmer. Any such alteration or modification is misuse and could result in a hazardous condition leading to possibly serious personal injury.

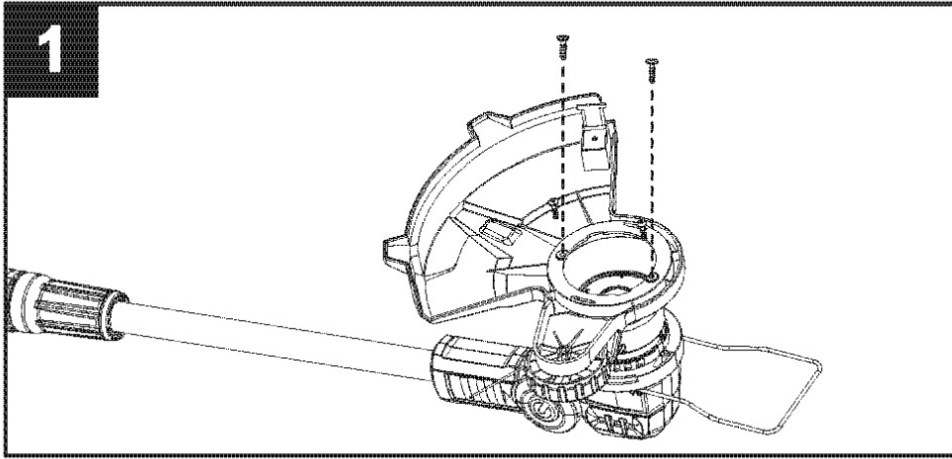
WARNING: Always remove the battery pack from the product when you are assembling parts, adjusting, cleaning, or when the product is not in use.

Unpacking

- This product requires assembly.
- Carefully remove the product and any accessories from the box. Make sure that all items listed in the packing list are included. Inspect the tool carefully to make sure that no breakage or damage occurred during shipping.
- Do not discard the packing material until you have carefully inspected and satisfactorily operated the tool.
- If any parts are damaged or missing, please return the product to the place of purchase.

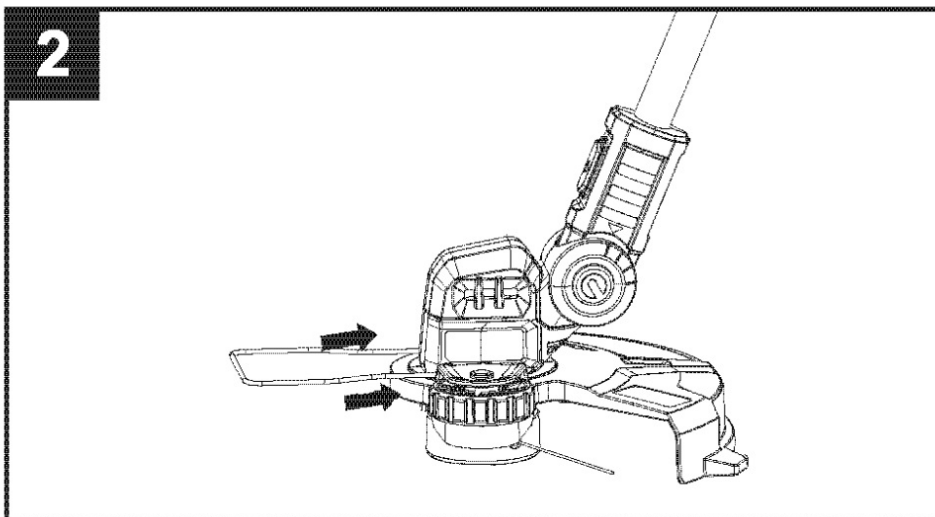
Fitting The Safety Guard (Fig. 1)

- a. Place the string trimmer on a flat surface. Put the string trimmer upside down. Mount the protective hood on the motor head.
- b. Fix the safety guard with 2 bolts.



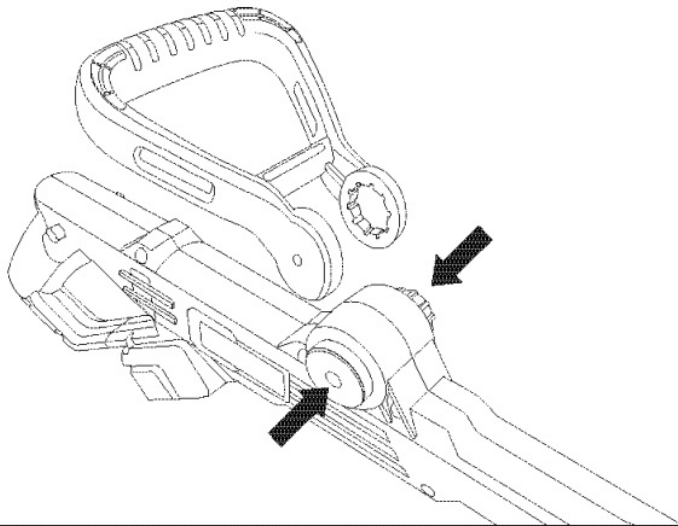
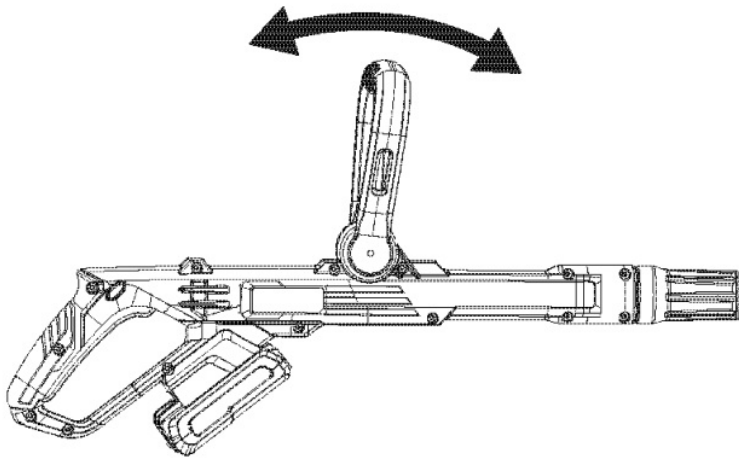
Fitting The Flower Guard(Fig. 2)

- a. Attach the flower guard to the motor housing.



Fitting The Auxiliary Handle (Fig.3&4)

- a. Push the auxiliary handle locking button, and mount the auxiliary handle onto the seat.
- b. Rotate the auxiliary handle to the required angle.
- c. Release the unlock button and ensure the handle clicks into a locked position.

3**4**

OPERATION

WARNING: Do not allow familiarity with this product to make you careless. Remember that a careless fraction of a second is sufficient to inflict serious injury.

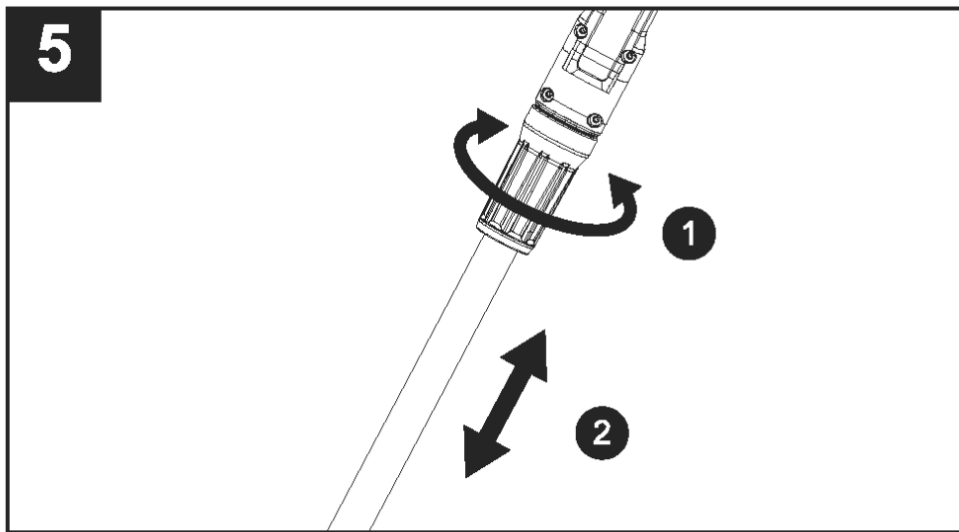
WARNING: Always wear eye protection with side shields marked to comply with ANSI Z87.1, along with hearing protection. Failure to do so could result in objects being thrown into your eyes and other possible serious injuries.

WARNING: Do not use any attachments or accessories not recommended by the manufacturer of this product. The use of attachments or accessories not recommended can result in serious personal injury.

Setting The Length Of Trimmer(-Fig.5)

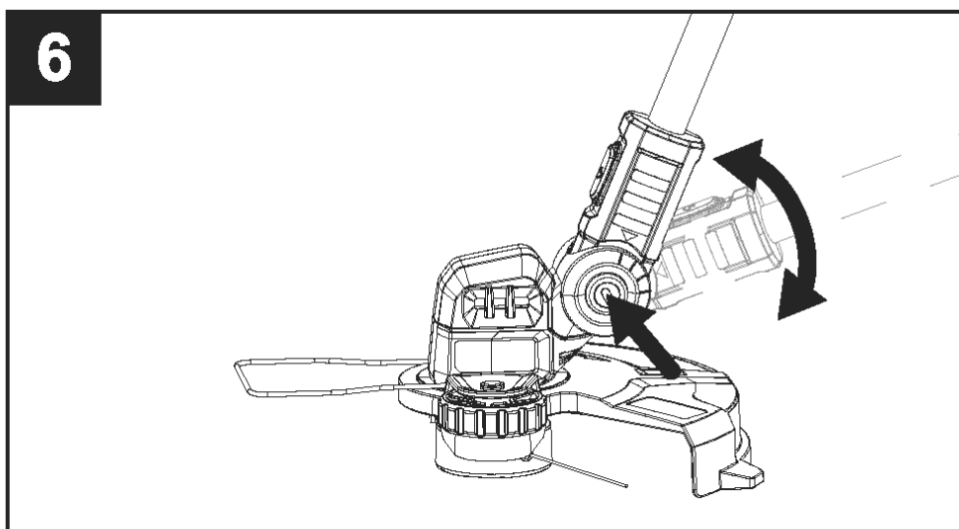
a. Slacken the locking collar.

- b. Pull the telescopic pole to the desired length.
- c. Retighten the locking collar.



Setting The Angle Of The Cutting Head(Fig.6)

- a. Press in and hold the cutting head locking button.
- b. Tilt the cutting head to the required position.
- c. Release the cutting head locking button and make sure the head clicks into a locked position

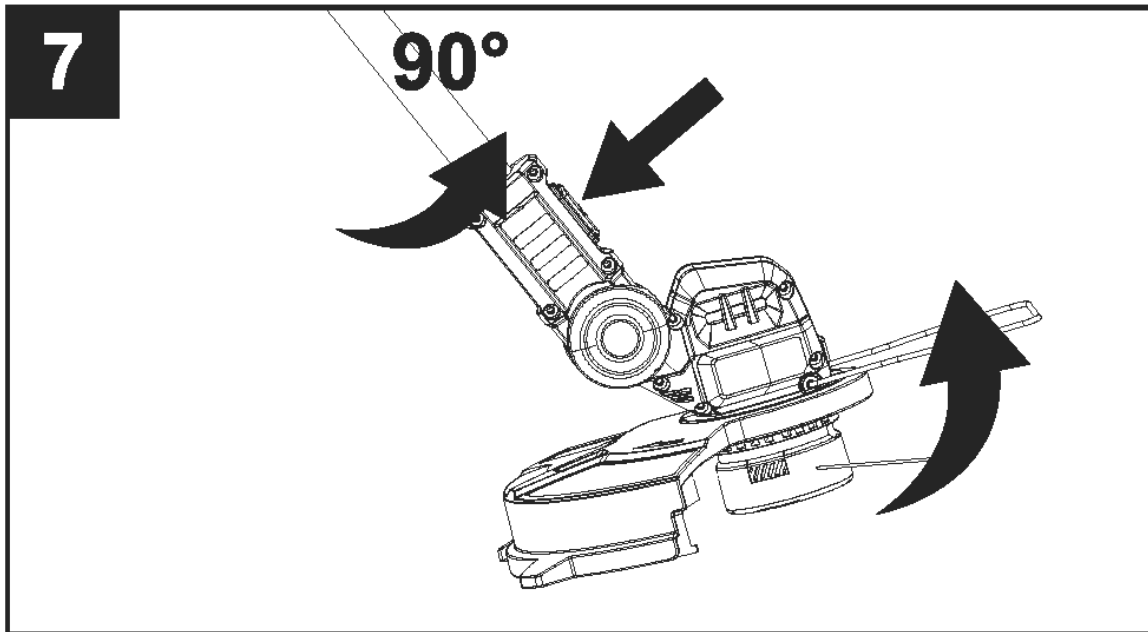


Converting To Edging Function(Fig.7)

- a. Press the edging function converting button.
- b. Turn the trimmer head 90° .Release the edging function converting button, and make

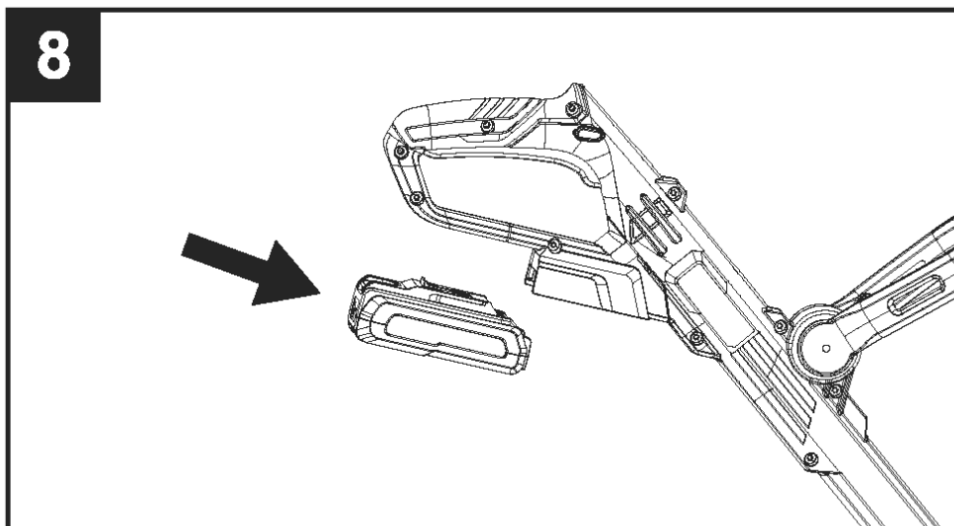
sure the string trimmer head is secured in place.

c. Now the string trimmer can be operated as a wheeled edger.



To Install/remove Battery Pack (Fig.8)

- Align the ribs of the battery pack with the mounting slots in the string trimmer's battery port.
- Press the battery pack towards the trimmer head until it snaps into position.



NOTICE: Make sure that the latch on the string trimmer snaps into place and the battery pack is secured to the tool before beginning operation.

c. To remove, press the locking button and pull the battery away from the trimmer

WARNING: Always be aware of the location of your feet and children or pets around you when pressing the battery release button. Serious injury could result if the battery pack falls. NEVER remove the battery pack at a high location.

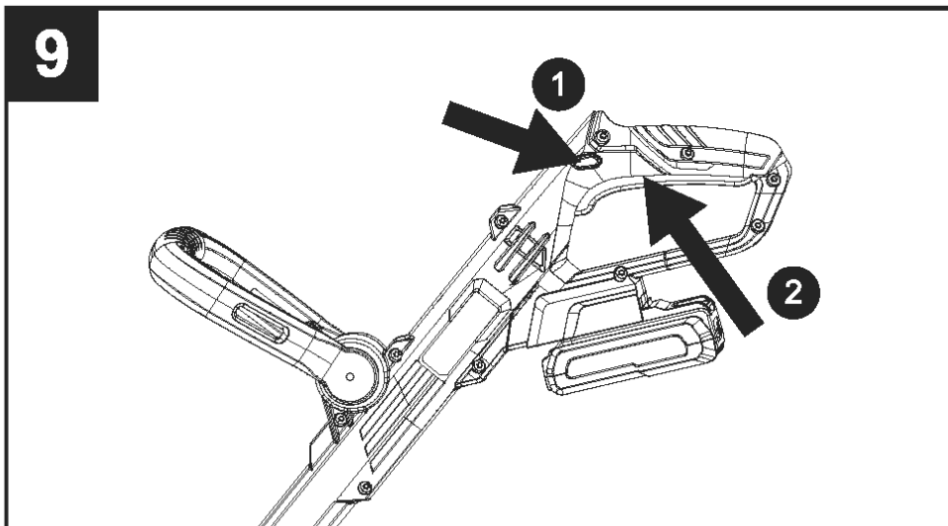
Starting/stopping The String Trimmer(Fig.9)

Make sure that you have a secure and balanced footing.

Stand upright and hold the string trimmer in a relaxed position.

Make sure that the cutting line is not touching the ground or any other objects.

Hold the string trimmer with both hands: one hand on the rear handle and one hand on the front-assist handle.



- a. Press the lock-off button and hold it in that position. Depress the ON/OFF trigger to turn on the string trimmer.
- b. Release the lock off button after the trimmer is turned on.
- c. To stop, release the ON/OFF trigger. Wait till the machine and the spool line come to a complete stop.

NOTICE: The motor runs only when the lock off button and trigger are both pressed.

WARNING: Always remove the battery pack from the string trimmer during work breaks and after finishing work.

Adjusting Cutting Line Length

The string trimmer comes with a full line spool. The line wears down during work. To feed in new line:

- a. Switch on the device, the line will automatically be increased by the centrifugal force.
- b. Switch off and switch on again until the line is increased to the right length. The trimmer line will be cut to the right length by the blade on the safety guard.

WARNING: Do not remove or alter the line cutting blade assembly. Excessive line length will cause the motor to overheat and may result in serious personal injury.

Holding The String Trimmer

WARNING: Dress properly to reduce the risk of injury when operating this tool. Do not wear loose clothing or jewelry. Wear eye and ear/hearing protection. Wear heavy, long pants, boots and gloves. Do not wear short pants or sandals or go barefoot.

Before operating the unit, stand in the operating position and check that:

- a. The operator is wearing eye protection and proper clothing.
- b. One arm is slightly bent, and the hand on that arm is holding the rear handle.
- c. The other arm is straight, with that hand holding the auxiliary handle.
- d. The trimmer head is parallel to the ground and easily contacts the material to be cut without the operator having to bend over.

Tips For The Operating String

Trimmer

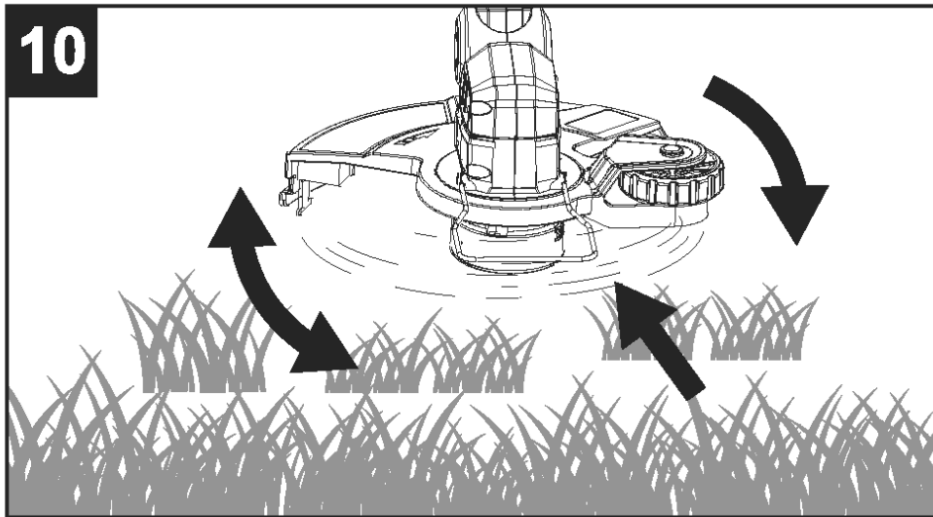
The correct angle for the cutting head is parallel to the ground.

- b. Do not force the trimmer. Allow the very tip of the line to do the cutting (especially along walls).
- c. Cutting with the tip of the lines. Do not force the trimmer into uncut grass. Use the recommended cutting area. (Fig. 10)
- d. Grass over 8 inches (200 mm) should be cut by working from top to the bottom in small increments to avoid premature line wear or motor drag.
- e. Slowly move the trimmer into and out of the area being cut, maintaining the cutting

head position at the desired cutting height. This movement can be either a forward-backward motion or a side-to-side motion. Cutting shorter lengths produces best results.

f. Wire and picket fences can cause extra string wear or breakage. Stone and brick walls, curbs, and wood may wear strings rapidly.

g. Avoid trees and shrubs. Tree bark, wood moldings, siding, and fence posts can easily be damaged by the strings.



MAINTENANCE

WARNING: When servicing, use only identical replacement parts. Use of any other parts may create a hazard or cause product damage. To ensure safety and reliability, all repairs should be performed by a qualified service technician.

WARNING: Battery tools do not have to be plugged into an electrical outlet; therefore, they are always in operating condition. To prevent serious personal injury, take extra precautions and care when performing maintenance, service or for changing the cutting attachment or other attachments.

WARNING:

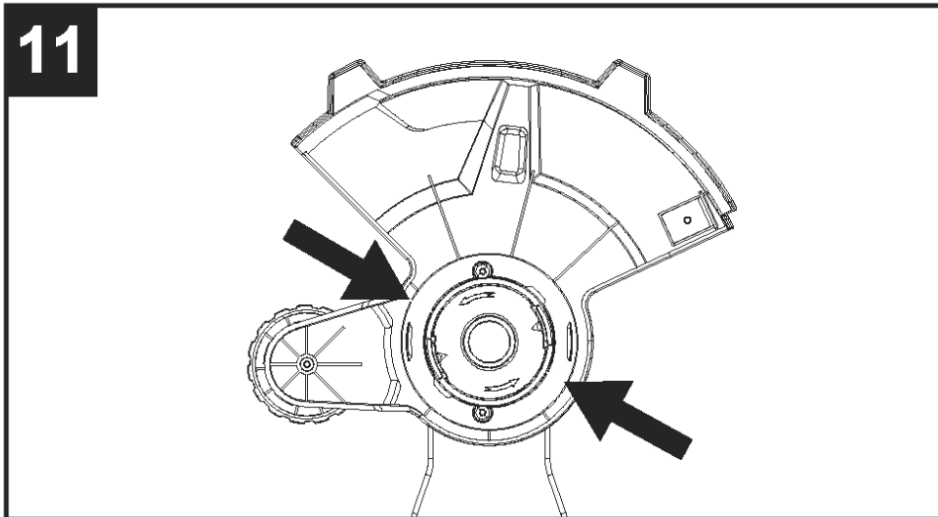
To prevent serious personal injury, remove the battery pack from the tool before servicing, cleaning, changing add-on attachments or removing material from the unit.

Line Replacement(Fig.11)

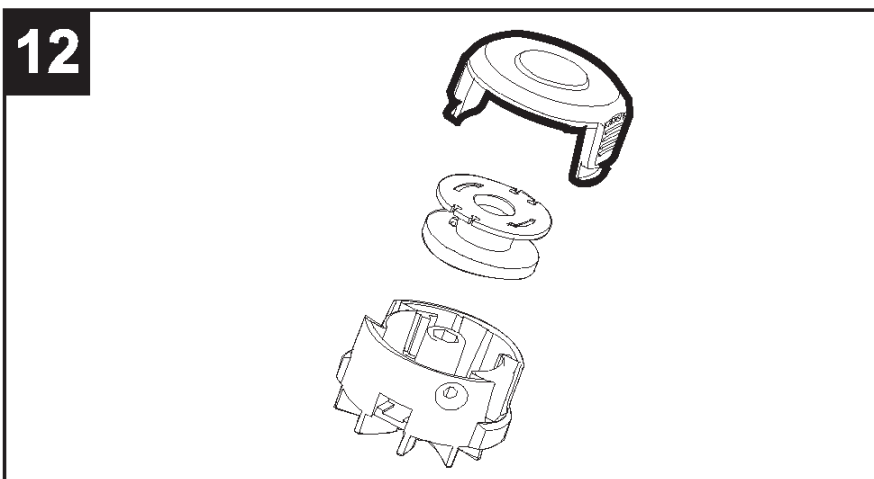
NOTICE: Always use the recommended nylon cutting line with a diameter that does not exceed 0.065 in. (1.65 mm). Using line other than that specified may cause the string trimmer to over-heat or become damaged.

WARNING:

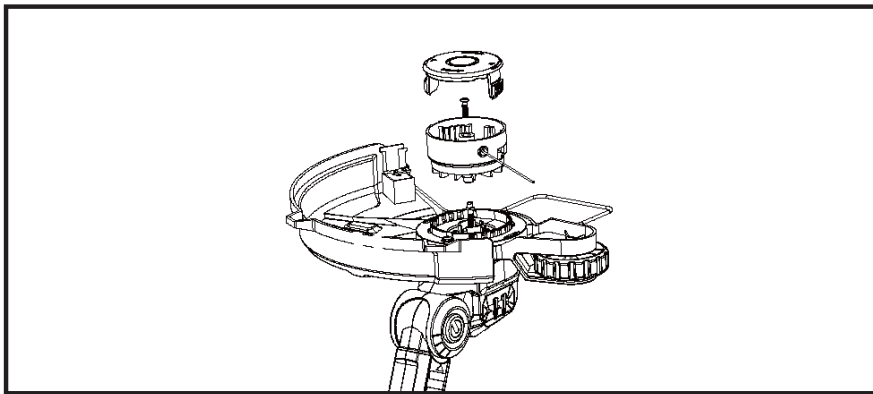
Never use metal-reinforced line, wire, or rope, etc. These can break off and become dangerous projectiles.



- a. Remove the battery pack.
- b. Press both locking devices together at the spool cover and remove the spool cover, remove the old spool.
- c. Fit the new spool or refilled spool in the trimmer head.
- d. Refit the spool cover.



e. Winding the line

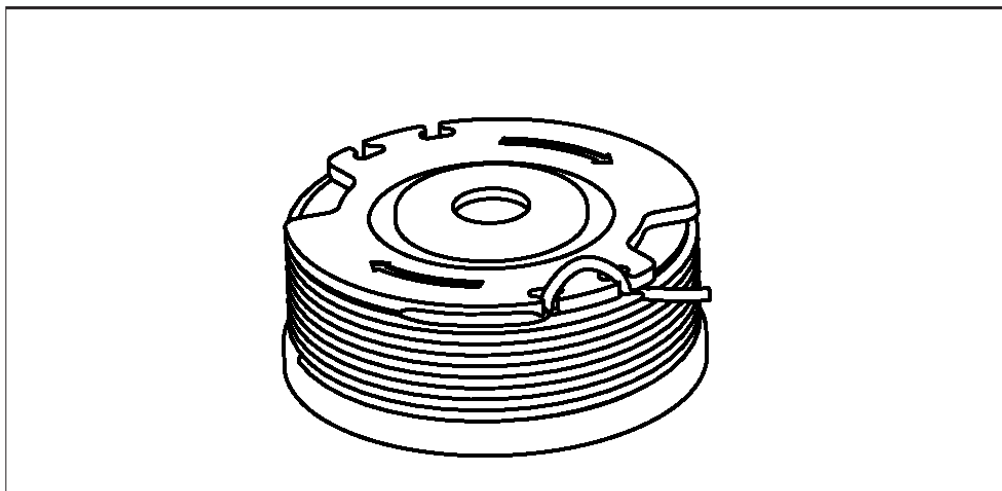


NOTE: Should you wish to wind the line yourself, the instructions are provided below:

Self-winding, however, is NOT recommended because if the line is not wound properly it can cause the trimmer's feed system to malfunction.

For this reason, users are strongly urged to purchase the pre-wound spool.

- 1) Hold the loose ends of the line together with one hand and hook this center loop into the groove on the spool.
- 2) Wind the line following the directional arrows on the spool housing and hook the two ends into the side grooves.



Clean The String Trimmer

- a. Clear any grass that may have wrapped itself around the motor shaft or trimmer head.

- b. Use a small brush or a small brush and a small vacuum cleaner to clean the air vents on the motor head.
- c. Keep the air vents free of obstructions.
- d. Clean the unit using a dry cloth.
- e. Do not use any strong detergents on the plastic housing or the handle. They can be damaged by certain aromatic oils, such as pine and lemon. Do not use solvents such as kerosene. Moisture can also cause a shock hazard. Wipe off any moisture with a soft dry cloth.

Sharpen The Line-cutting Blade

WARNING: Always protect your hands by wearing heavy gloves when performing any maintenance on the line-cutting blade.

- a. Remove the line-cutting blade from the guard.
- b. Secure the blade in a vise.
- c. Wear proper eye protection and gloves and be careful not to cut yourself.
- d. Carefully file the cutting edges of the blade with a fine-tooth file or sharpening stone, maintaining the original cutting-edge angle.
- e. Replace the blade on the guard and secure it in place with the two screws.

Storing The String Trimmer

- a. Remove the battery pack from the trimmer.
- b. Clean the tool thoroughly before storing it.
- c. Store the unit in a dry, well-ventilated area, locked-up or up high, out of the reach of children. Do not store the unit on or adjacent to fertilizers, gasoline, or other chemicals.

Storing The Battery Pack

- a. Protect the battery against moisture and water.
 - b. Store the battery only within a temperature range from 40°F to 104°F. As an example, do not leave the battery in a vehicle or in the trimmer in direct sunlight.
 - c. Clean the ventilation slots of the battery occasionally with a soft, clean and dry brush.
- A considerably shortened operating time after charging is an indication that the battery is exhausted and must be replaced.

d. If you do not use the product for a long time, please charge and discharge the battery pack once every month.

TROUBLESHOOTING

Problem	Possible Cause	Solution
String trimmer fails to start.	The battery pack is not attached to the trimmer.	Attach the battery pack to the trimmer.
	No electrical contact between the trimmer and battery.	Remove battery, check contacts and reinstall the battery pack.
	The battery pack is depleted.	Charge the battery pack.
	The lock-off button and trigger are not depressed simultaneously.	Press the lock-off button and hold it, then depress the trigger to turn on the string trimmer.
	The guard is not mounted on the trimmer, resulting in an overly long cutting line and motor overload.	Remove the battery pack and mount the guard on the trimmer.
	Heavy cutting line is used.	Use recommended nylon cutting line with diameter no greater than 0.065 in. (1.65mm).
	The motor shaft or trimmer head is bound with grass.	Stop the trimmer, remove the battery, and remove the grass from the motor shaft and trimmer head.

String trimmer stops while cutting.	The motor is overloaded.	Remove the trimmer head from the grass. The motor will recover to work as soon as the load is removed. When cutting, move the trimmer head in and out of the grass to be cut and remove no more than 8 inches of length in a single cut.
	The battery pack or string trimmer is too hot.	Cool the battery pack or string trimmer until the temperature drops below 152°F (67°C).
	The battery pack is depleted.	Charge the battery pack.
	The battery pack is disconnected from the string trimmer	Re-install the battery pack.
Excessive vibrations/ noise	Line spool is not wound well.	Rewind the line.
Trimmer will not advance line.	There is not enough line on the spool.	Remove the battery and replace the cutting line.
	The trimmer head is dirty	Remove the battery and clean the spool, spool retainer and spool base.
	The line is tangled on the spool.	Remove the battery, remove the line from the spool and rewind.

OWNER'S MANUAL

12-Inch 20V Lithium-ion String Trimmer With (1) 20V 2.0Ah Lithium-ion Battery

Copyright All Rights Reserved

YARDWORKS WARRANTY POLICY

- Two (2) year limited warranty on all Yardworks 20V lithium ion power tools from date of purchase when used for personal, household, or family use.
- Two (2) year limited warranty on all Yardworks 20V lithium ion batteries and chargers from date of purchase when used for personal, household, or family use.
- Warranty voided if used for commercial or industrial purposes or any other improper use as determined by Yardworks.
- Warranty does not include repairs necessary due to operator's abuse or negligence (including overloading the product beyond capacity or immersion in water), or the failure to assemble, operate, maintain or store the product according to the instructions in the owner's manual.
- This warranty does not cover
 - ◇ Wear items, including but not limited to – drive belts & gears, tines, cutting blades, mower blades, saw chains, mulching blades, blower fans, spool covers, trimmer line, blower and vacuum tubes, guide bars, high pressure hoses, wheels, handles, augers, worn bags, power cables, and other items subject to wear over time.
 - Wear on batteries, including but not limited to – drops, wear and breakage on charger, exposure to extreme temperature swings (hot or cold), battery left on charger too long, battery left uncharged for too long, and misuse or abuse of the battery.
- This warranty does not cover damage caused by cold, heat, rain, excessive humidity or other environmental extremes.
- This warranty does not cover normal deterioration of the exterior finish or normal wear and tear on the products including, but not limited to scratches, cracks, dents, or damage caused by outside chemicals.
- This warranty is not transferable and only applies to new products sold directly from an authorized retailer. This warranty does not apply to any product, new or used, purchased through unauthorized third-party channels. For information on authorized dealers, contact our customer support hotline at 1-[888-497-7273](tel:888-497-7273) (Mon-Fri 8am-5pm Est)
- Any incidental, indirect or consequential loss, damage, or expense that may result from any defect or malfunction of the products is not covered by the warranty.

- The warranty does not include installation, assembly or normal adjustments explained in the owner's manual. The expense of delivering the product to the vendor and the expense of returning the product or replacement parts to the owner is not covered by the warranty.

Additional Warranty Limitations

Some states do not allow the exclusion or limitation on how long an implied warranty lasts, so the above limitation may not apply to you. Products sold damaged or incomplete, sold —as is, or sold as reconditioned are not covered under the warranty.

Damage or liability caused by shipping, improper handling, improper assembly, incorrect voltage, improper wiring, improper maintenance, improper modification or the use of accessories and/or attachments not specifically recommended is not covered by this warranty.

Proof of purchase, original dated sales receipt, must accompany all warranty claims. For claims go to [Menards](#) or call our customer support hotline from 8am-5pm EST, Mon-Fri at 1-[888-497-7273](tel:888-497-7273)

In a continued commitment to improve quality, the Manufacturer reserves the right to make component changes or design changes when necessary.

SPECIFICATIONS

SKU No.	267-2903
Model No.	EGT020058/D04003054
Voltage	20V
No Load Speed	6500RPM
Cutting Diameter	12"
Line Diameter	0.065"
Battery	2.0 Ah (267-3206/D01102700/D01104300/EBP000182)

Charger	2 A (267-3205/ECA000159)
Charger Rating	Input: 100-120V~, 50-60Hz 60W Output: Max 21.2V, 2 A
Charging Time(Approx.)	About 70 mins

Frequently Asked Questions (FAQ):


Q: Can I use a different battery pack with this trimmer?

A: It is recommended to use only the specifically designated battery pack to avoid any risk of injury or fire.

Q: How far should bystanders be kept away from the trimmer?

A: Keep all bystanders at least 50 feet away from the trimmer while in operation to ensure their safety.

Documents / Resources

	<p>Yardworks 267-2903 20 Volt Cordless String Trimmer and Edger [pdf] Instruction Manual</p> <p>267-2903, 267-2903 20 Volt Cordless String Trimmer and Edger, 267-2903, 20 Volt Cordless String Trimmer and Edger, Cordless String Trimmer and Edger, Trimmer and Edger, and Edger, Edger</p>
-------------------------------------------------------------------------------------	---------------------------------------------------------------------------------------------------------------------------------------------------------------------------------------------------------------------------------------------------------------------------------------------------------------

References

- [User Manual](#)

Related Posts

[ENHULK LGT1216 16 Inch Cordless String Trimmer Instruction Manual](#)

ENHOLUX LGT1216 16 Inch Cordless String Trimmer



LGT1216 16 Inch Cordless String Trimmer



[greenworks P0804459-00 2 In 1 String Trimmer and Edger User Guide](#)

P0804459-00 2 In 1 String Trimmer and Edger User Guide Quick Start Guide 2 IN 1 STRING TRIMMER...



[EGO ST1534 56-Volt Cordless 15 Inches Rear Motor String Trimmer Kit User Manual](#)

EGO ST1534 56-Volt Cordless 15 Inches Rear Motor String Trimmer Kit Product Description: String Trimmer

Model Number: ST1530...

[WEED EATER XT20 OEM String Trimmer Instructions](#)



XT20 OEM String Trimmer

YARDWORKS

20 Volt Cordless String Trimmer and Edger, 267-2903, 267-2903 20 Volt Cordless String Trimmer and Edger, and Edger, Cordless String Trimmer and Edger, Edger, Trimmer and Edger, YARDWORKS

Leave a comment

Your email address will not be published. Required fields are marked *

Comment *

Name

Email

Website

☐ Save my name, email, and website in this browser for the next time I comment.

Post Comment

Search:

e.g. whirlpool wrf535swhz

Search

[Manuals+](#) | [Upload](#) | [Deep Search](#) | [Privacy Policy](#) | [@manuals.plus](#) | [YouTube](#)

This website is an independent publication and is neither affiliated with nor endorsed by any of the trademark owners. The "Bluetooth®" word mark and logos are registered trademarks owned by Bluetooth SIG, Inc. The "Wi-Fi®" word mark and logos are registered trademarks owned by the Wi-Fi Alliance. Any use of these marks on this website does not imply any affiliation with or endorsement.