



YAMAY PC with Windows OS connect to Bluetooth M20 User Guide

[Home](#) » [YAMAY](#) » YAMAY PC with Windows OS connect to Bluetooth M20 User Guide 

Contents

- [1 YAMAY PC with Windows OS connect to Bluetooth M20](#)
- [2 Fast Guide](#)
- [3 Documents / Resources](#)
- [4 Related Posts](#)

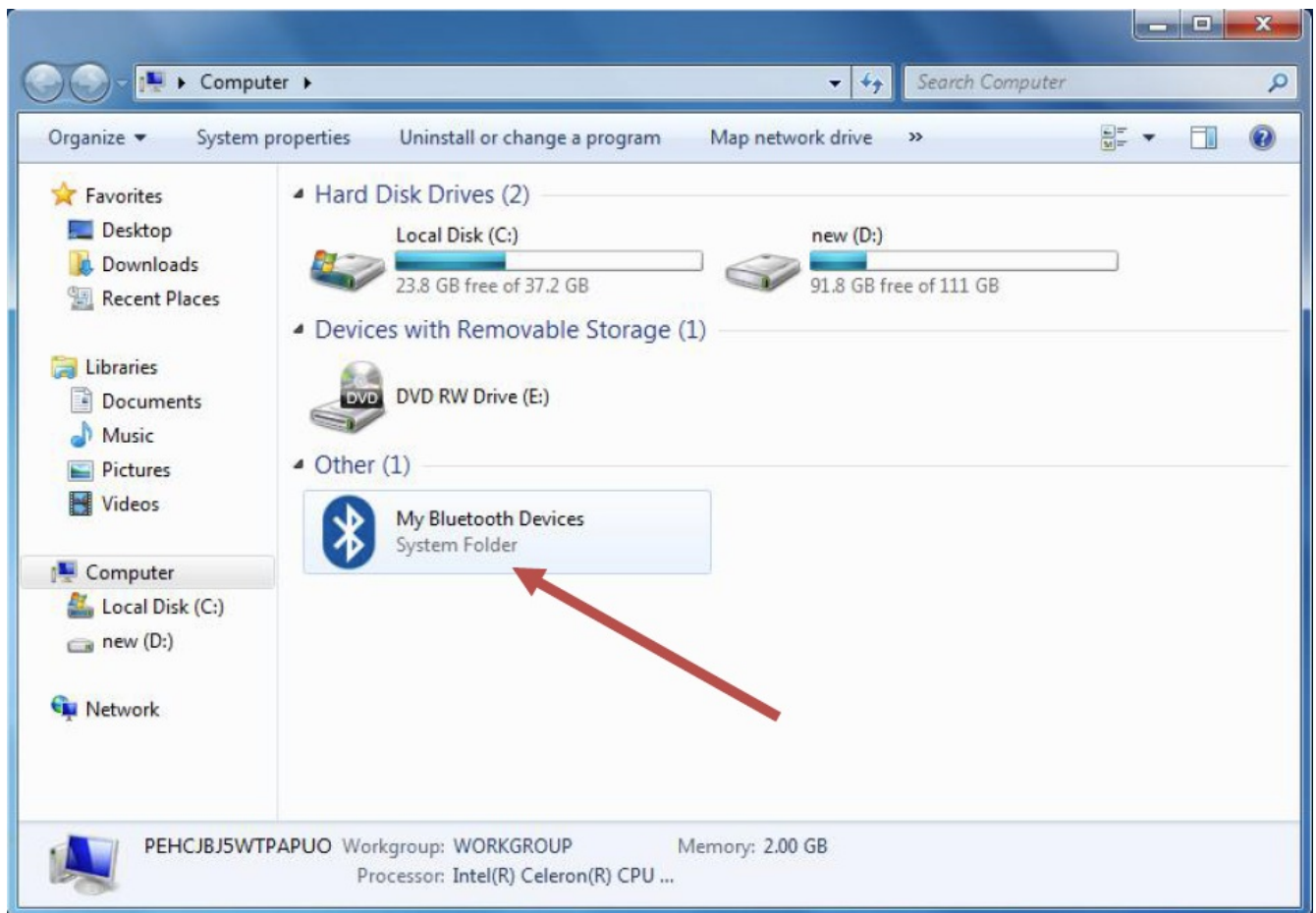


YAMAY PC with Windows OS connect to Bluetooth M20

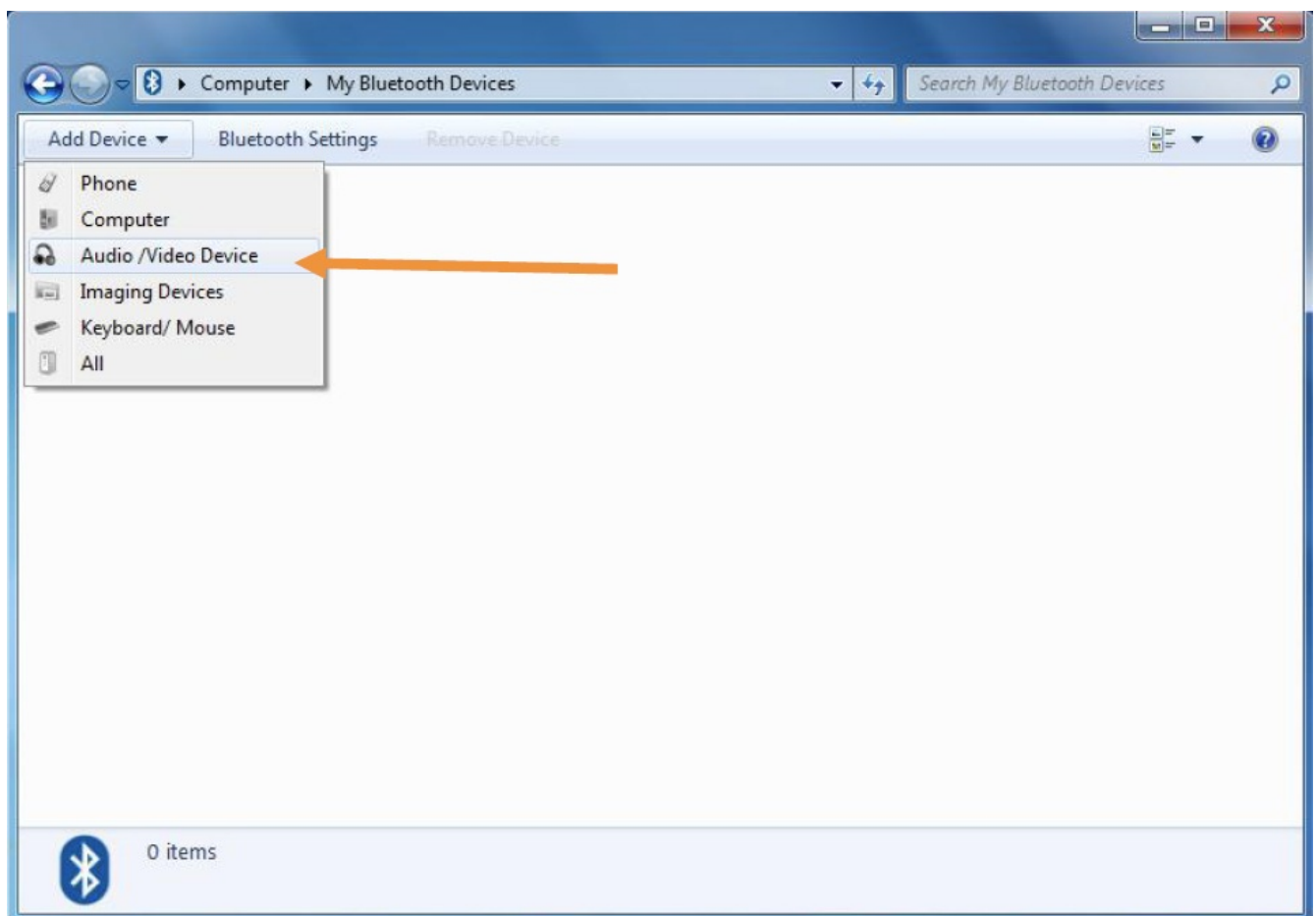


Fast Guide

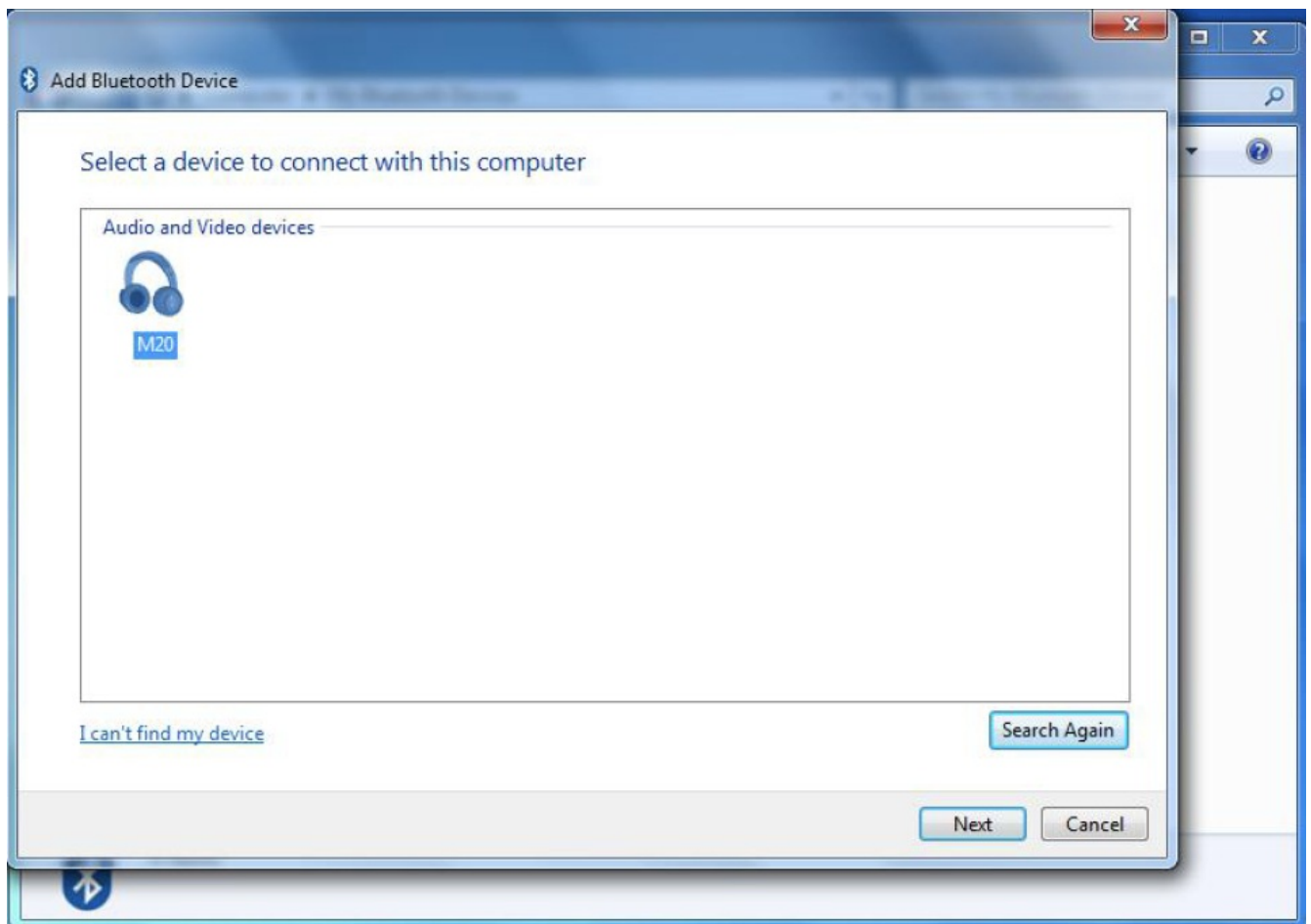
1. Make sure your PC has Bluetooth function,, and click “my PC” to find Bluetooth Devices



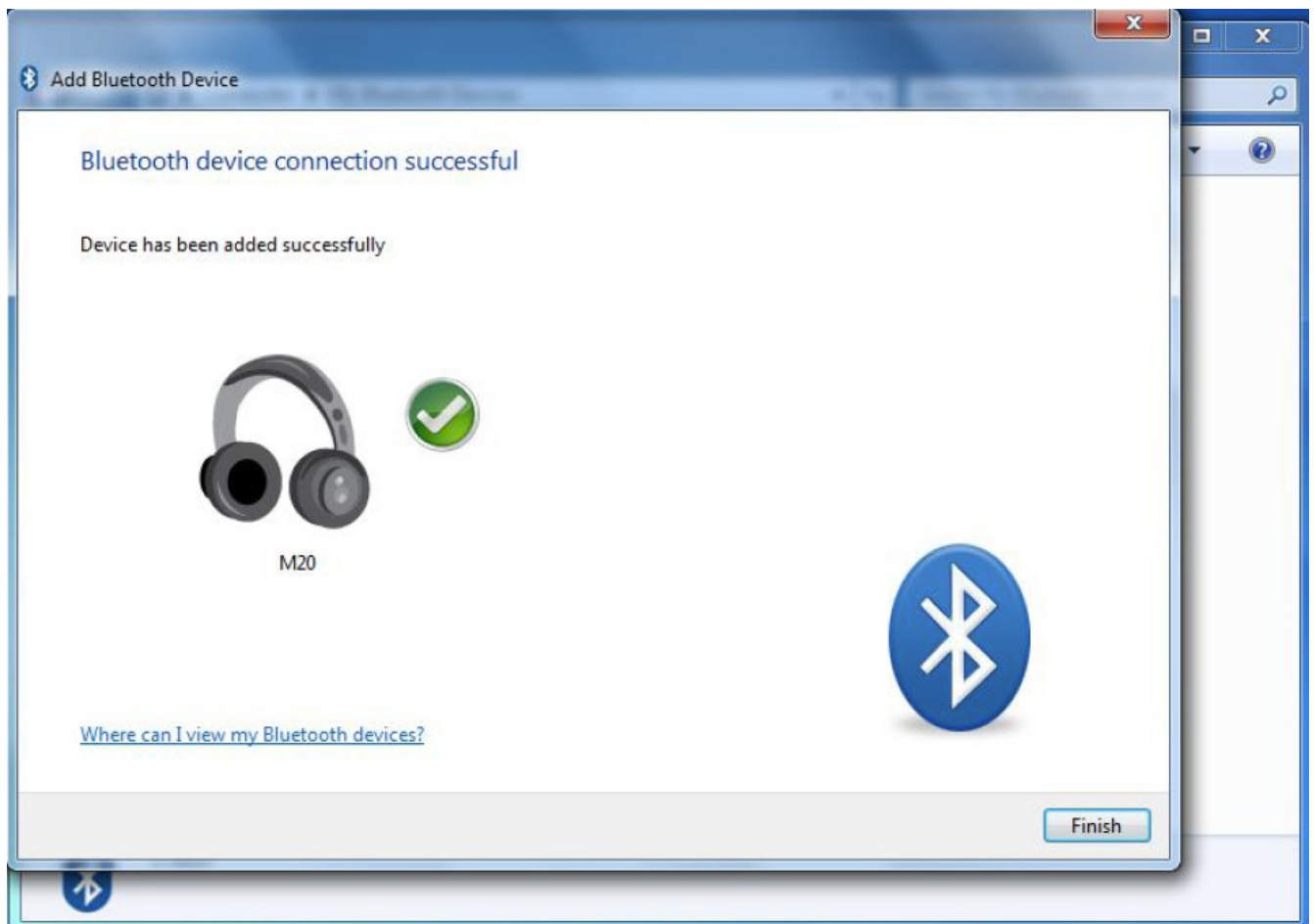
2. Double click "My Bluetooth Devices", and "Add Device", and "Audio/Video Device"



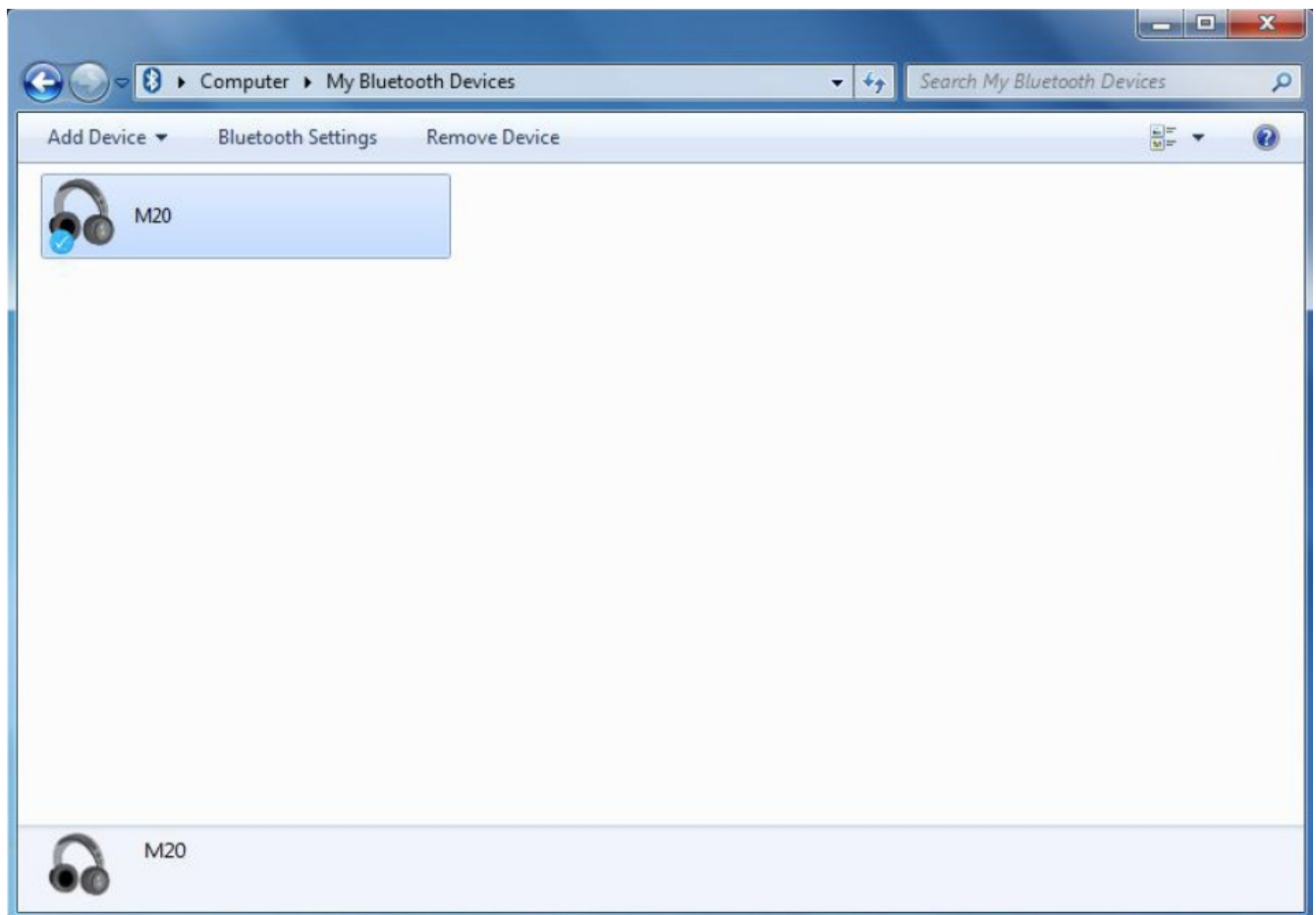
3. PC searches the Bluetooth devices to connect, and it will find your Bluetooth headset M20



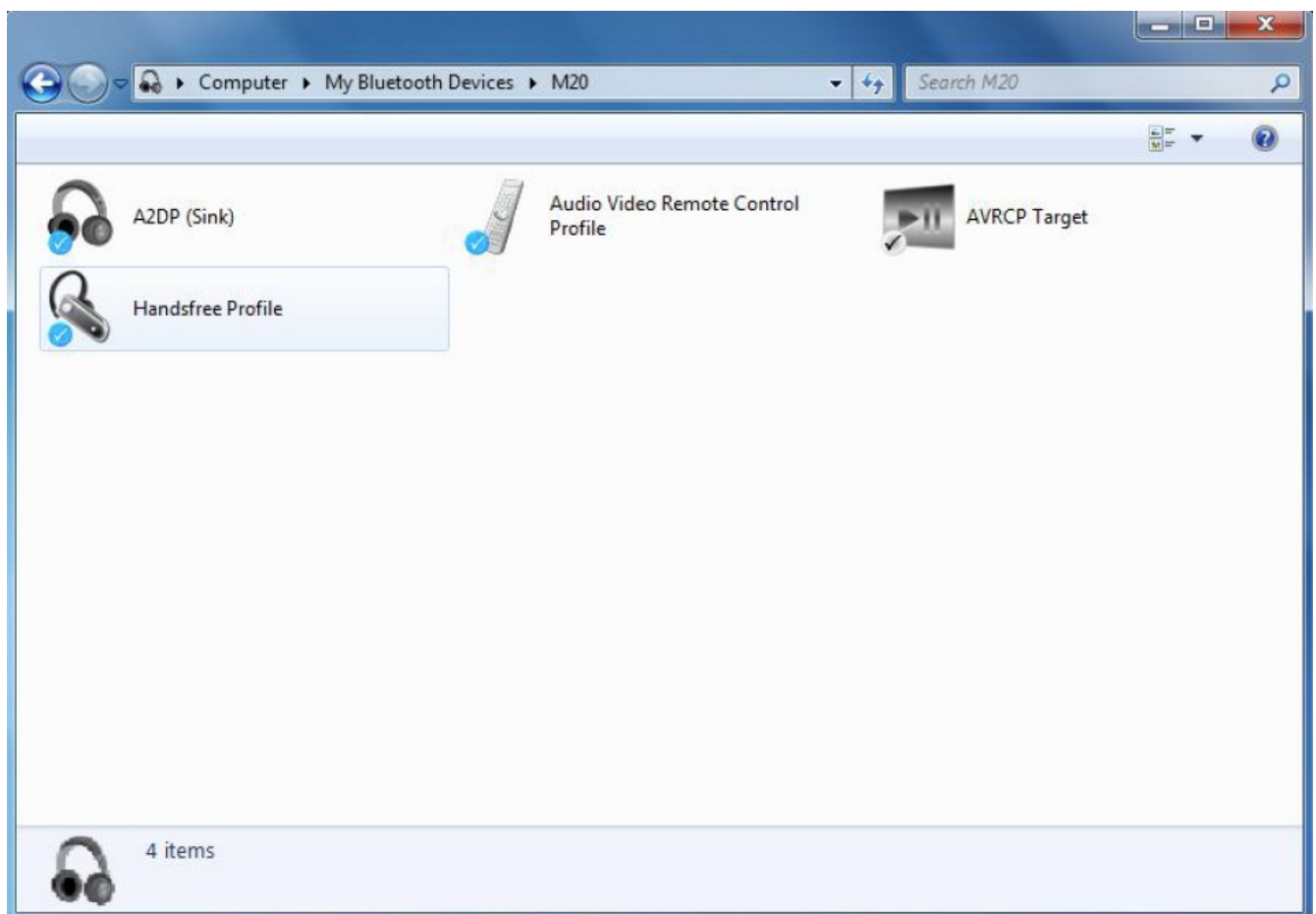
4. Your PC and Bluetooth headset pairs successfully.



5. Connect successfully

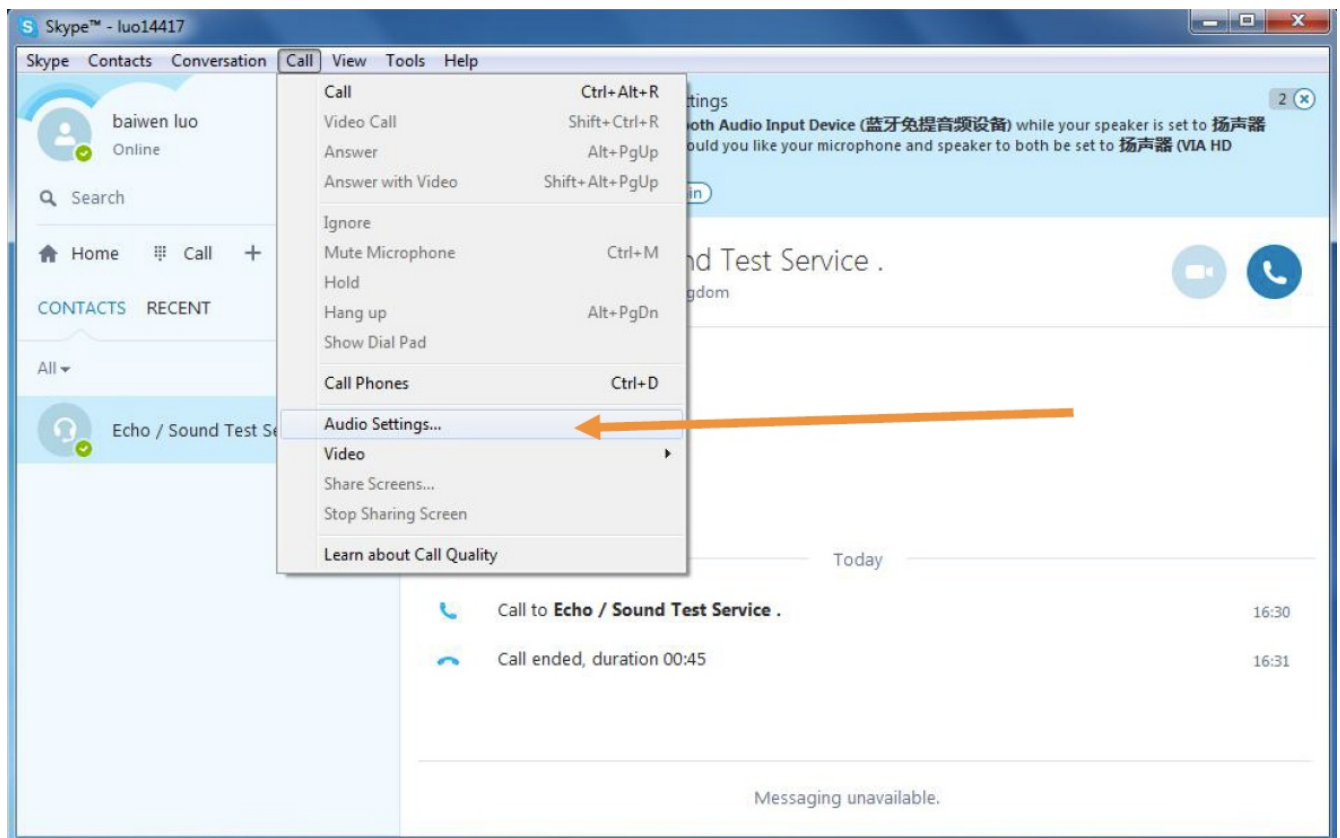


6. All functions of M20 are ready

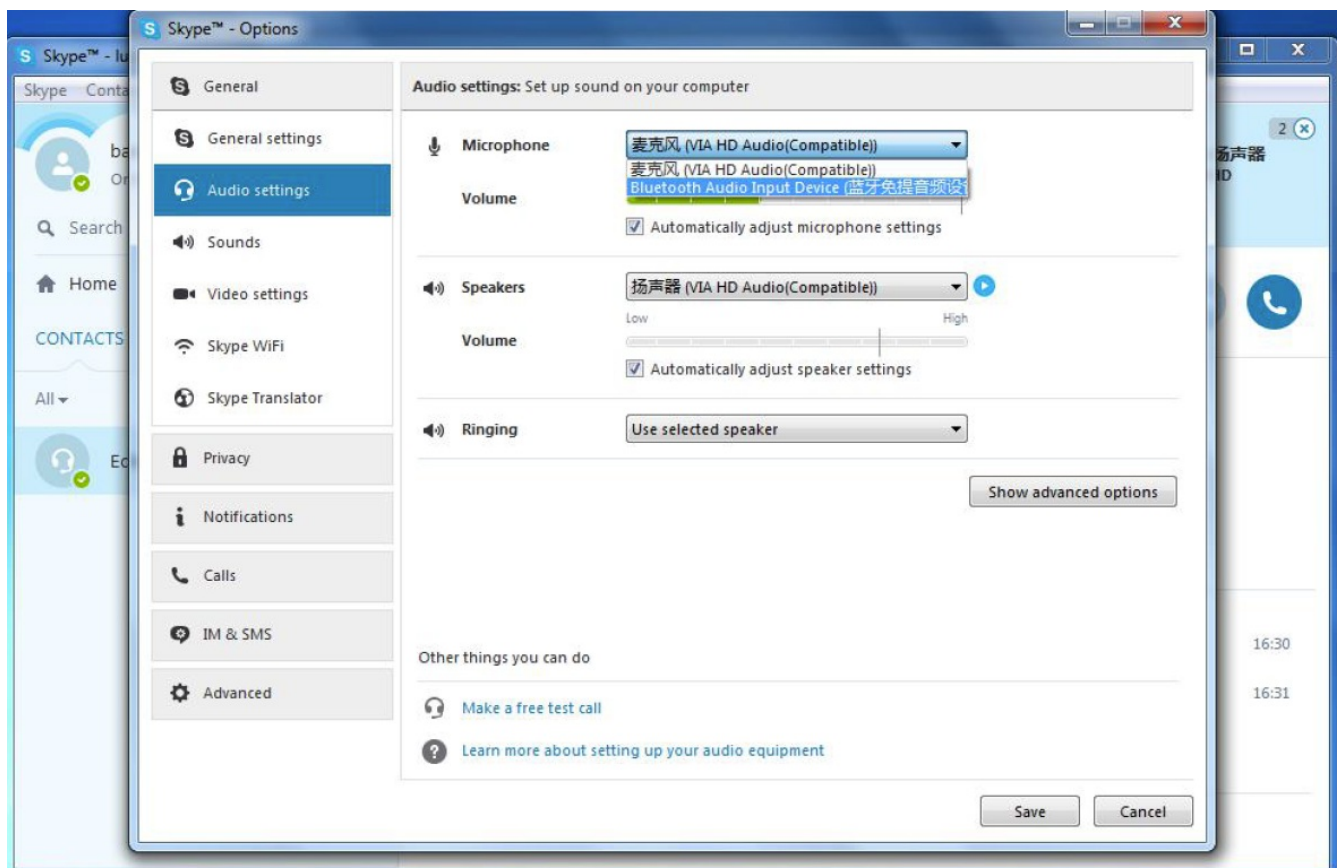


How to use it for internet audio? For example, SKYPE...

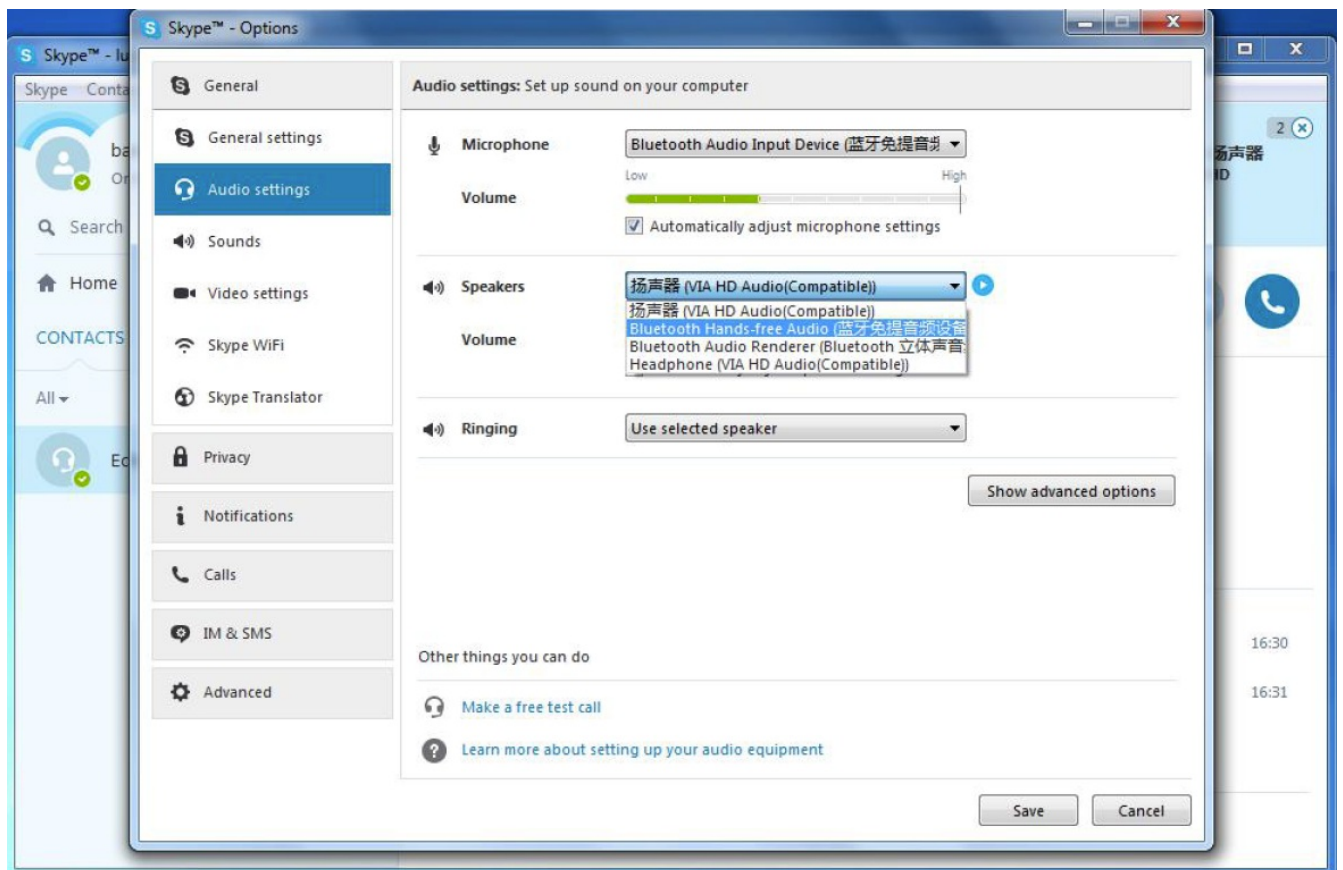
1. Open Skype, choose "call", then "Audio Settings..."



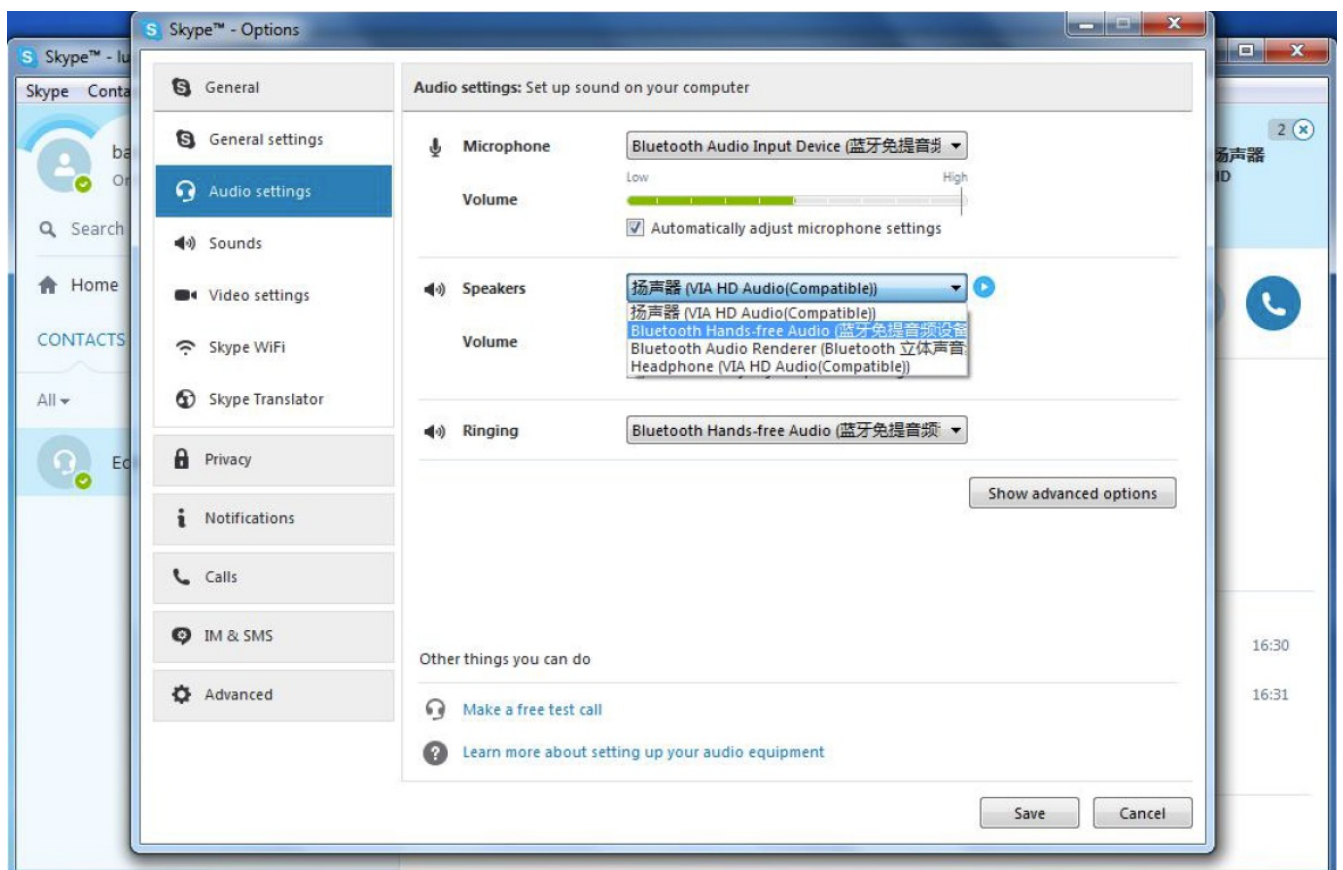
2. The first item "Microphone" should choose "Bluetooth Audio Input Devices"



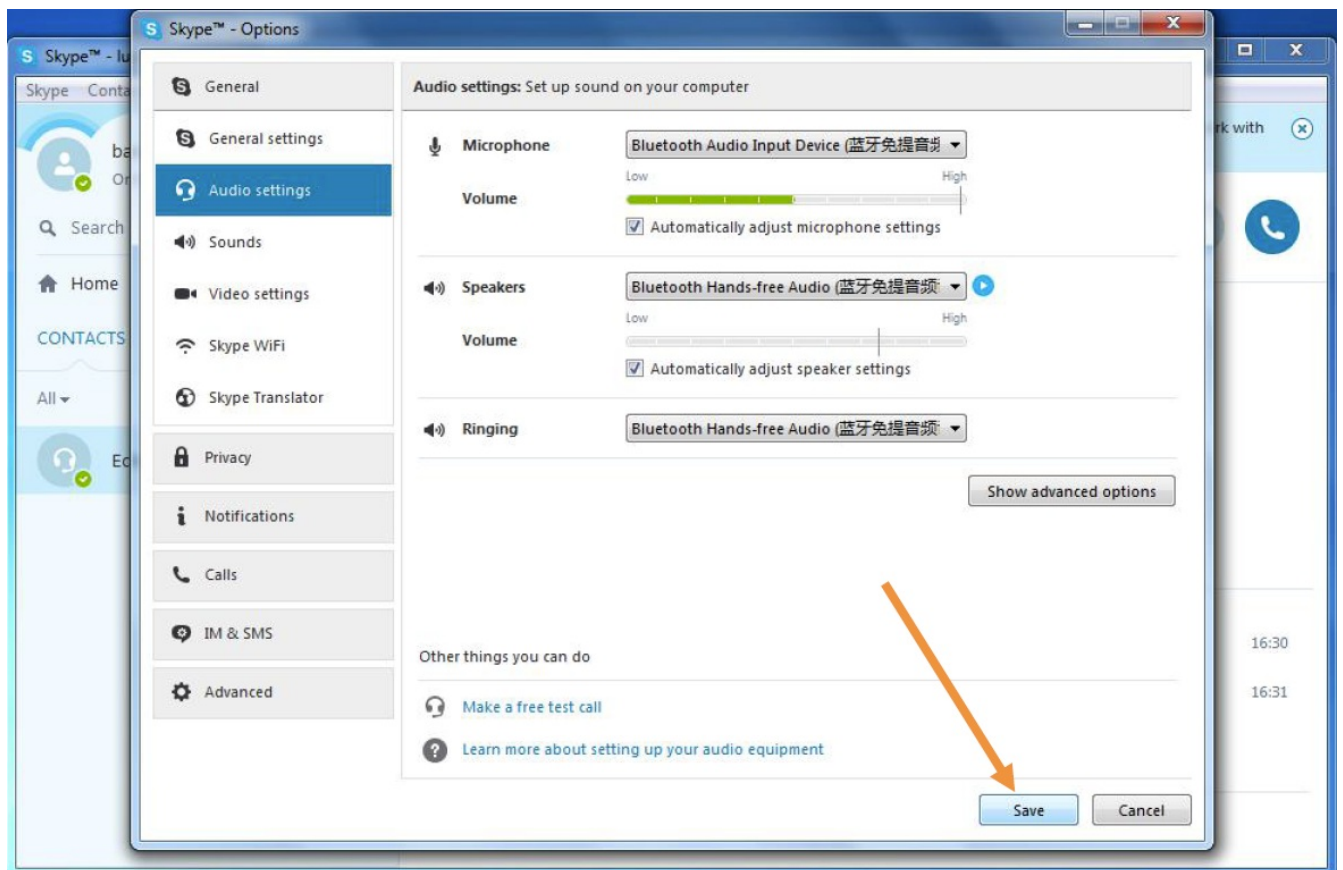
3. The second item "Speakers" choose "Bluetooth Hands-free Audio"



4. The third item to choose "Bluetooth Hands-free Audio"

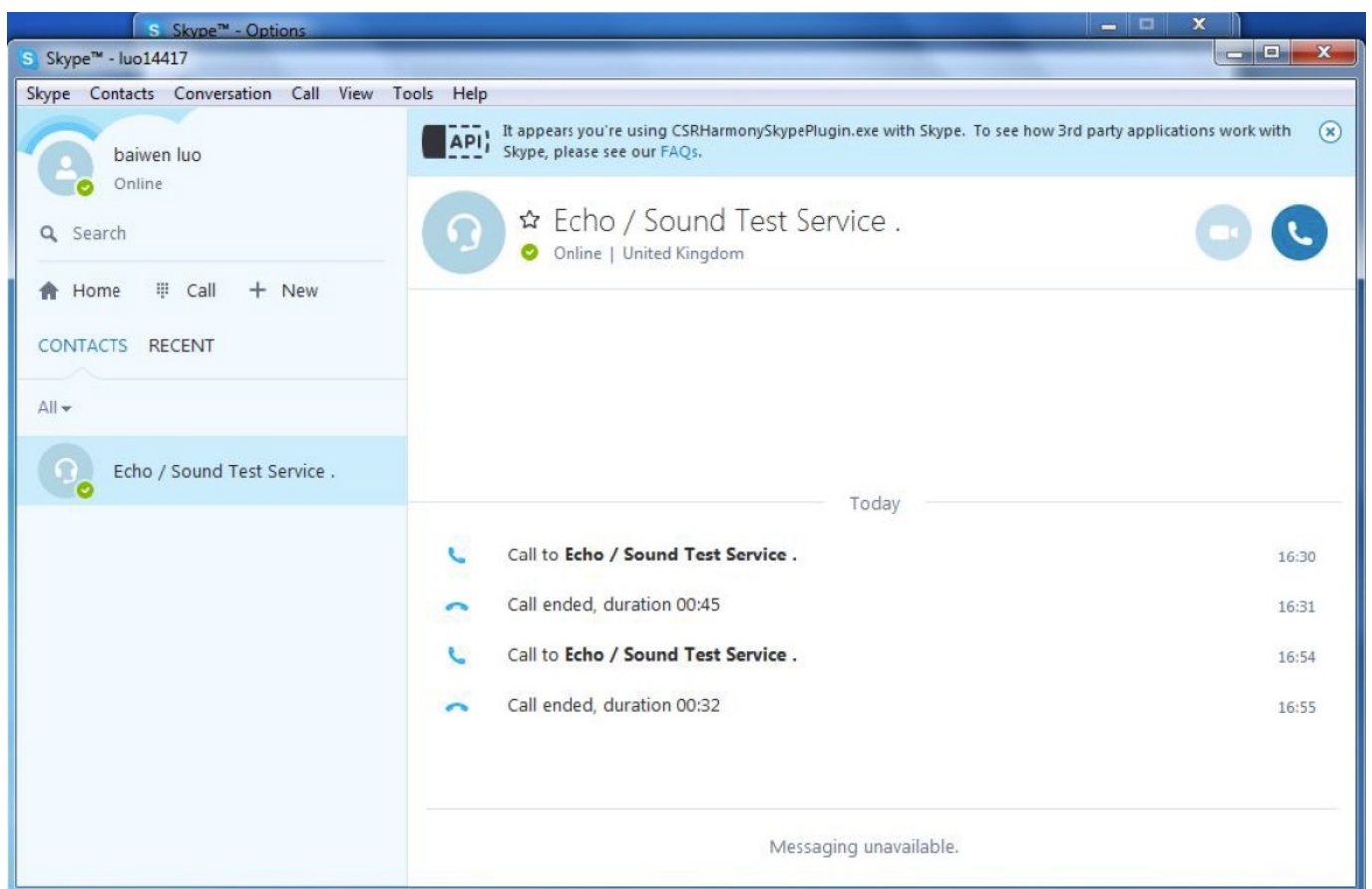


5. Save the above choices



6. Skype is ready with your Bluetooth headset M32

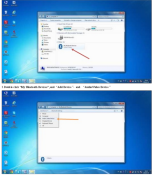
For testings



For other internet audio software/APP, the setting is similar.



Documents / Resources

| | |
|---|--|
|  | <p>YAMAY PC with Windows OS connect to Bluetooth M20 [pdf] User Guide YAMAY, Bluetooth, Headphones, Microphone, YAMAY, Bluetooth, Headset, Wireless, Headphones, on Ear, Noise, Cancelling, Boom, Mic, Mute, Key, Clear, Sound, Foldable, Heads et, Cell, Phones, PC, Tablet, Home, Office</p> |
|---|--|