

Yale Unity Slim
Smart Lock



Yale Unity Slim Smart Lock Installation Guide

[Home](#) » [Yale](#) » Yale Unity Slim Smart Lock Installation Guide 

Contents

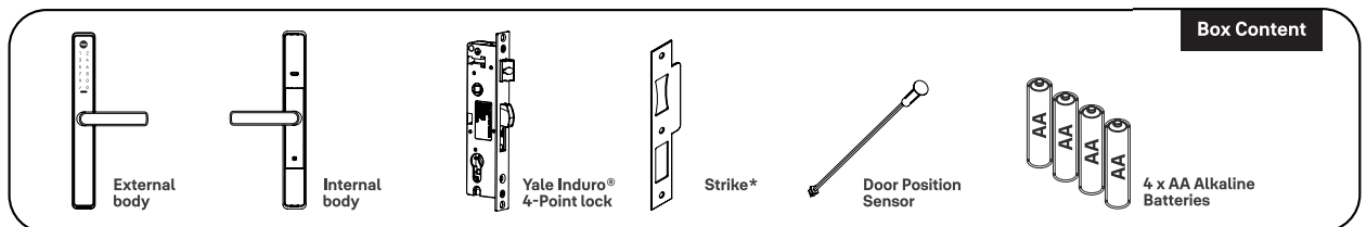
- [1 Yale Unity Slim Smart Lock](#)
- [2 WHAT IN THE BOX](#)
- [3 Installation Instructions](#)
- [4 Documents / Resources](#)
 - [4.1 References](#)
- [5 Related Posts](#)



Yale Unity Slim Smart Lock

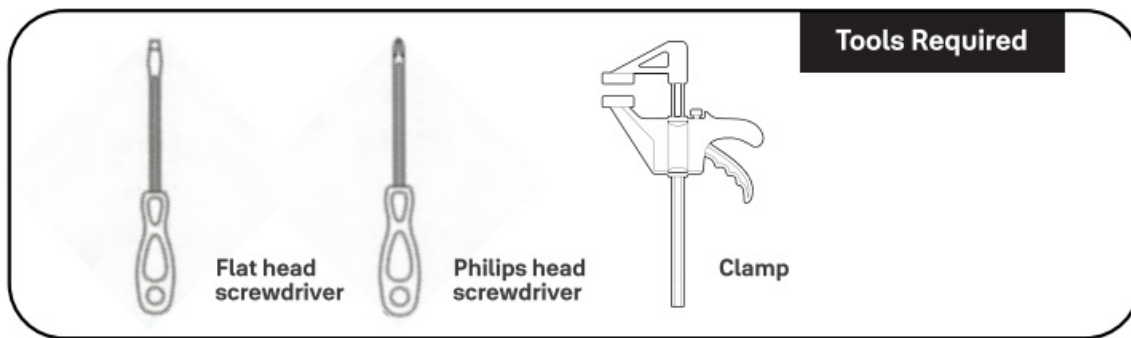


WHAT IN THE BOX



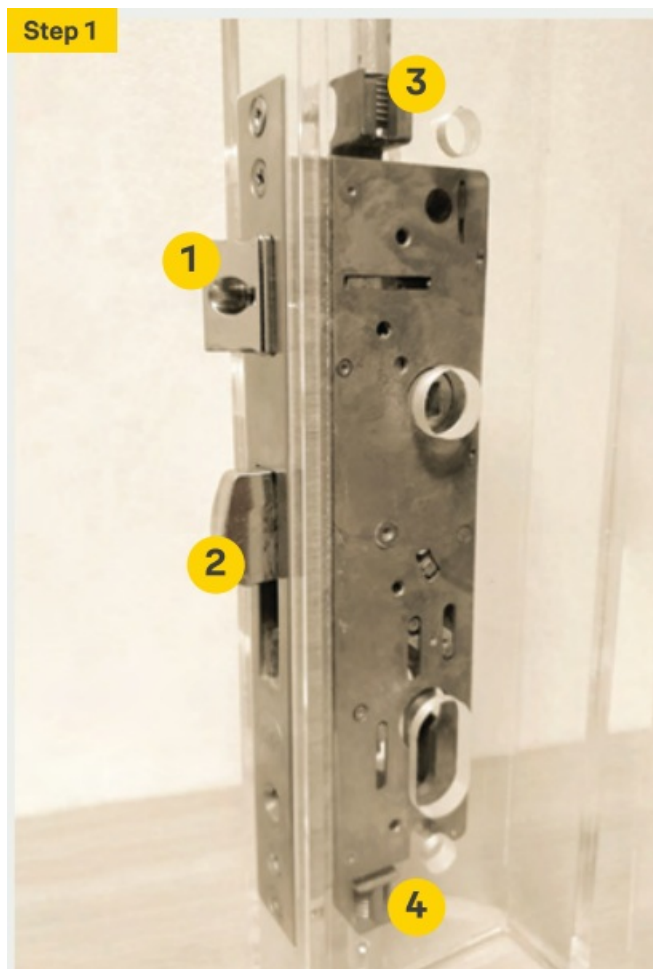
SCAN FOR
PRODUCT GUIDES

Tools Required



Installation Instructions

1. Ensure Yale Induro® 4-Point mortice lock is installed on the door, refer to mortice lock installation instructions.



2. Set the orientation of both handles by rotating the handle according to your door opening direction. If the handle orientation is incorrect, ensure the handling tab is pulled upwards during handle rotation.



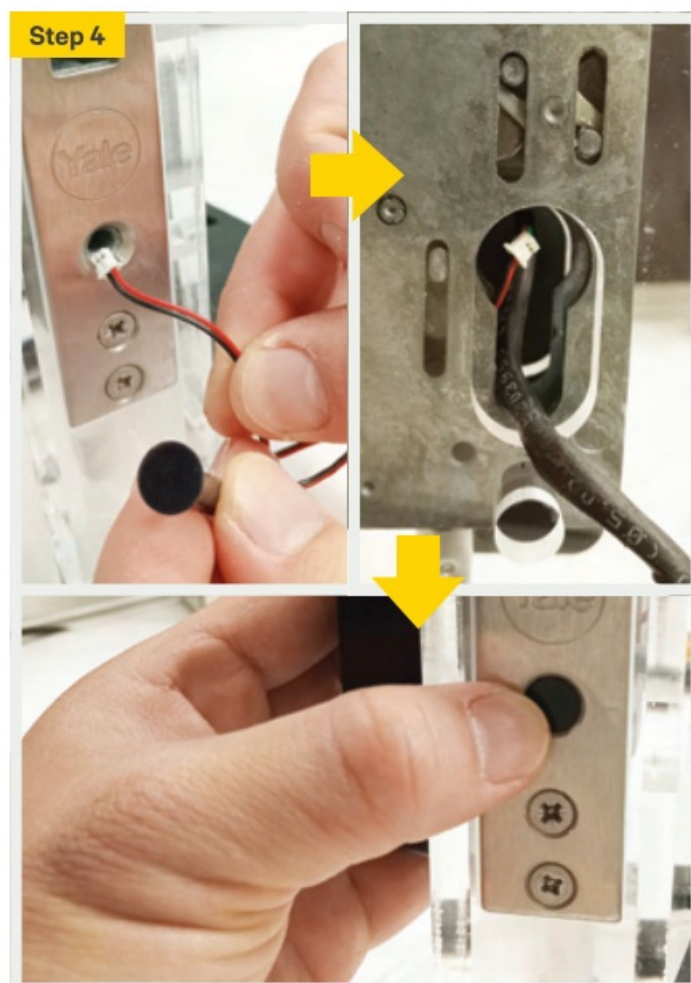
Note: For the External body, the handing tab is accessible after peeling the gasket back. Once handing is complete, the gasket must be reinstalled, ensuring gasket spigots are firmly pushed into the relative holes for adequate sealing.

3. Carefully use a flathead screwdriver to remove both battery covers.

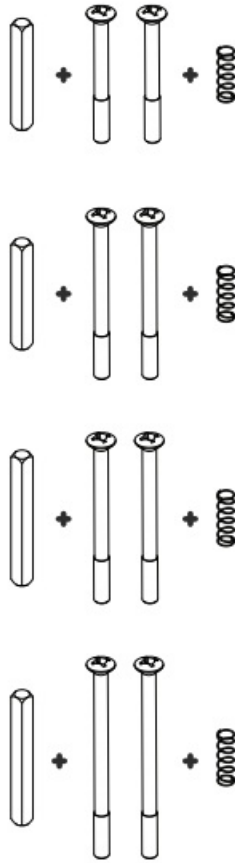


- **Important:** Do not install the batteries and operate the External or Internal body prior to installation on the door. This may cause the lock to malfunction.

4. Feed Door Position Sensor wire through the front mortice lock hole and exit out the internal side of the door. Push Door Position Sensor firmly until it is flush with the lock faceplate.



5. Select screws and spindles based on your door thickness.



1. 35-44mm door thickness

- 1 x Short Spindle
- 2xShortScrews
- 1 x Compression Spring

2. 44-48mm door thickness

- 1 x Short Spindle
- 2 x Medium Screws
- 1 x Compression Spring

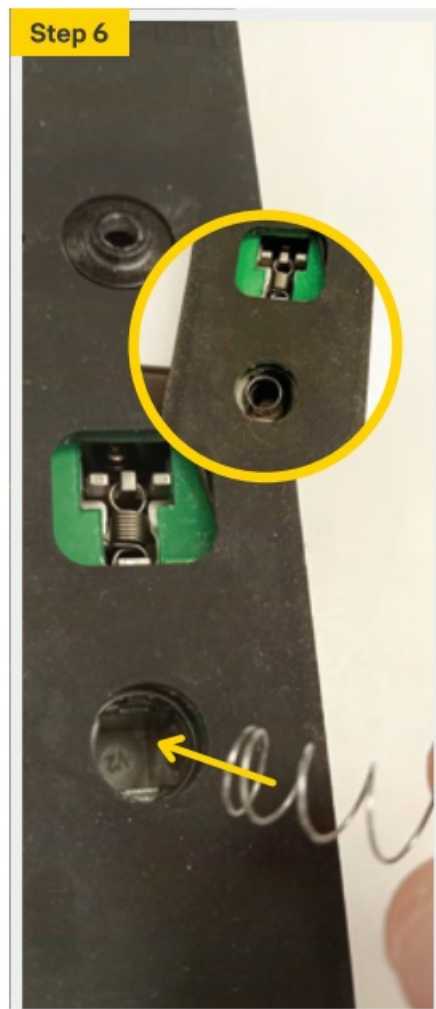
3. 48-53mm door thickness

- 1 x Long Spindle
- 2 x Medium Screws
- 1 x Compression Spring

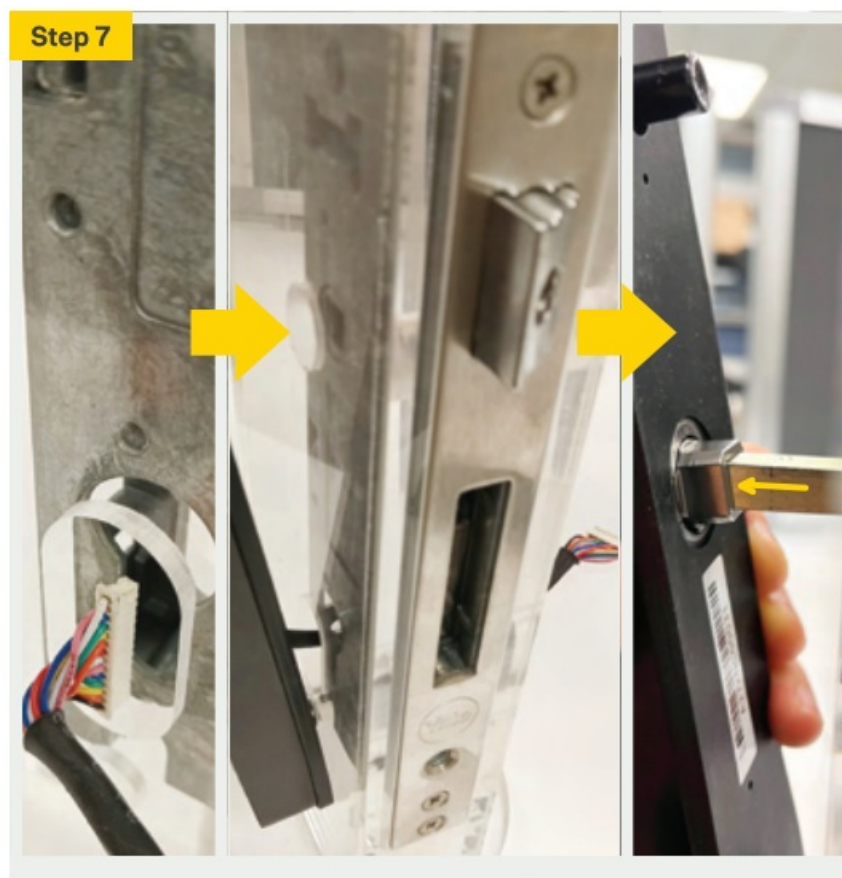
4. 53-60mm door thickness

- 1 x Long Spindle
- 2 x Long Screws
- 1 x Compression Spring

6. Insert compression spring into Internal body handle hole.

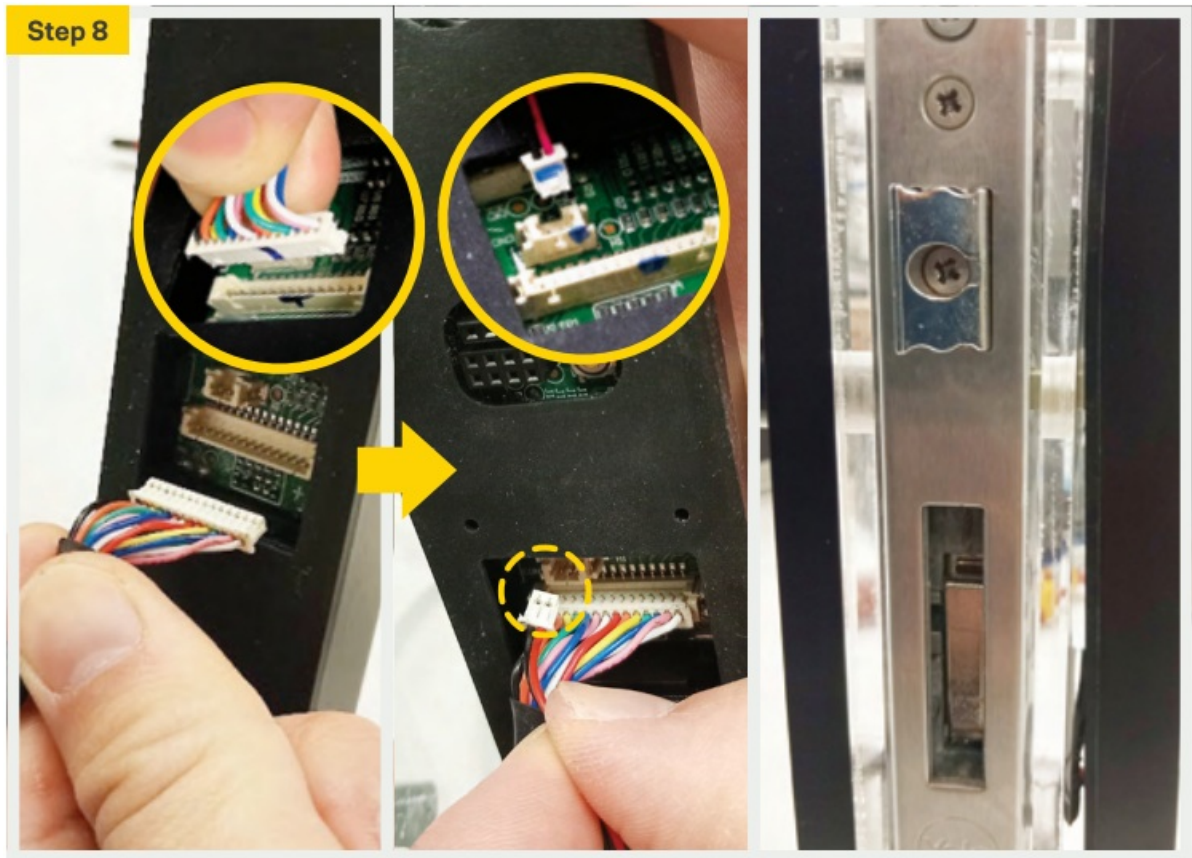


7. Feed the External body cable through the lock cylinder hole. Place the External body onto the stile, insert the spindle through the lock case, and spindle hole in the External body. A clamp can be used to hold the external body onto the door, in preparation for the next step. Important: Ensure the cable is not pinched and External body is aligned correctly with door mounting holes.



8. Plug the External Body Cable and the Door Position Sensor cable into the Internal body circuit board. Place Internal body onto door stile. A clamp can be used to hold the External and Internal body onto the door, in preparation for the next step.

Important: Plugs can only be installed one way. Do not use excessive force. Ensure the cables are not pinched and Internal body is aligned correctly with door mounting holes.



9. Using a screwdriver and mounting screws, fix the Internal and External bodies together.

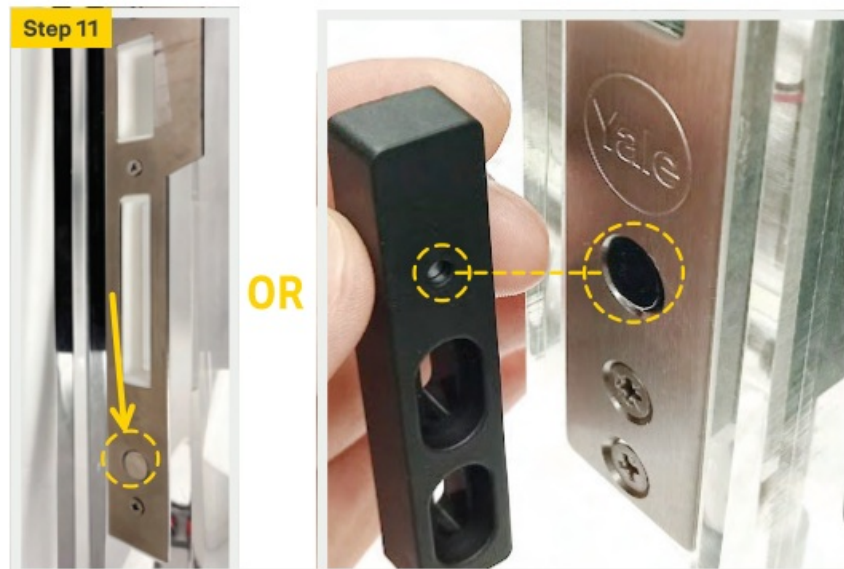


10. Test lever functionality by lifting and lowering the internal handle. Lifting the internal handle should engage multipoint locking. Lowering the handle should retract multipoint locking.



11. Fit strike to the door frame, ensuring the magnet on the strike is positioned directly opposite the Door Position Sensor (DPS).

- Refer to the photo on the left if using a strike containing a DPS magnet.
- Refer to the photo on the right if using a DPS magnet housing (may not be included in your kit). This is appropriate for retrofit installations, used alongside an existing strike. Ensure the magnet is positioned directly opposite the DPS.





12. Insert four AA batteries (two in the top and two in the bottom). Reinstall the battery covers. Refer to UserGuide to continue to setting up the smart lock.



- ASSA ABLOY New Zealand Ltd 6 Armstrong Road, Albany, Auckland, 0632, New Zealand yalehome.com/nz | For customer feedback: nzsales@assaabloy.com
- ASSA ABLOY Australia Pty Ltd 235 Huntingdale Road Oakleigh, Victoria, 3166 Australia 1300 LOCK UP (1300 562 587) | yalehome.com/au

Documents / Resources

	<p>Yale Unity Slim Smart Lock [pdf] Installation Guide Unity Slim Smart Lock, Slim Smart Lock, Slim Lock, Smart Lock, Lock, Unity Lock</p>
	<p>Yale Unity Slim Smart Lock [pdf] User Guide YA_060524, Unity Slim Smart Lock, Unity Smart Lock, Slim Smart Lock, Smart Lock, Unity Lock, Slim Lock, Lock</p>

References

- [Yale Smart Locks, Digital Locks, Digital Safes, Padlocks, Home Automation | Yale](#)
- [Yale Welcome to Yale - Trusted every day. | Yale](#)
- [User Manual](#)

[Manuals+](#), [Privacy Policy](#)

This website is an independent publication and is neither affiliated with nor endorsed by any of the trademark owners. The "Bluetooth®" word mark and logos are registered trademarks owned by Bluetooth SIG, Inc. The "Wi-Fi®" word mark and logos are registered trademarks owned by the Wi-Fi Alliance. Any use of these marks on this website does not imply any affiliation with or endorsement.