



Yale UNI 3000-Series Unitrol Parallel Arm Installation Guide

[Home](#) » [Yale](#) » Yale UNI 3000-Series Unitrol Parallel Arm Installation Guide 

Yale[®]

 Habitat for Humanity[®]
**UNI 3000-Series Unitrol Parallel Arm
Installation Guide**



Installation Instructions
80-9303-2208-010 (09-08)
Series UNI 3300/3310 (DL)
Series UNI 3500/3510 (DL)

Contents

- [1 UNI 3000-Series Unitrol Parallel Arm](#)
- [2 Standard Frame Installation](#)
- [3 Deep Frame Installation](#)
- [4 Installation Sequence](#)
- [5 Unit Adjustment](#)
- [6 Documents / Resources](#)
 - [6.1 References](#)

UNI 3000-Series Unitrol Parallel Arm

CAUTION

An incorrectly installed or improperly adjusted door closer can cause property damage or personal injury.

These instructions should be followed to avoid the possibility of misapplication or mis adjustment.

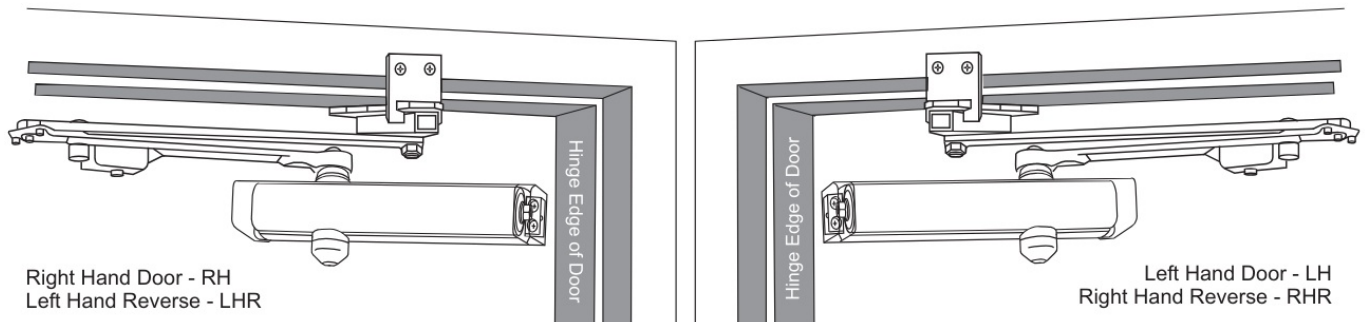
DOOR WIDTH determines the location of the closer. Use ONLY the template chart corresponding to your door width.

Use ONLY the dimensions given in each template chart for the door total OPENING angle or the HOLD-OPEN angel desired.

Standard Frame Installation

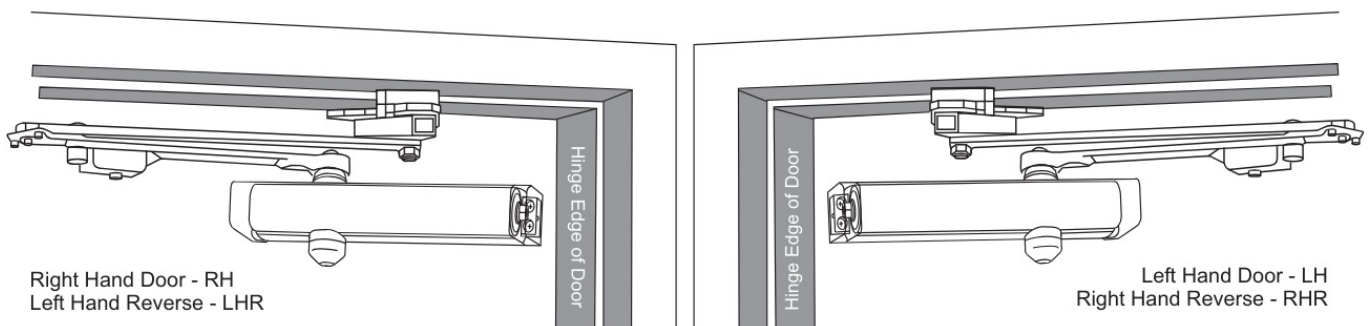
1-7/8 to 4-5/8

Frame Reveals (Uses 6190 Bracket). Bracket illustration page 4. Door and frame preparation See Page 2



Deep Frame Installation

Frame Reveals Over 4-5/8 (Uses 6191 Clamp Kit). Bracket illustration page 4. Door preparation page 2 Frame preparation page 3



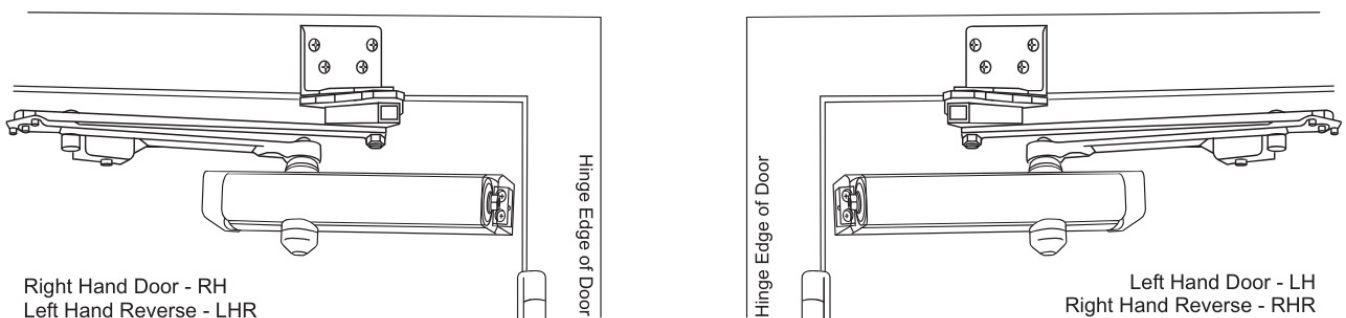
Flush Transom Installation

Flush Partitions (Uses 589L Bracket).

Bracket illustration page 4.

Door preparation page 2

Frame preparation page 3



NOTE: Use this instruction sheet for installation sequence and closer adjustments only

- It is recommended that the door on which the door closer will be installed be hung on ball bearing hinges. Door must swing freely
- Door and Frame must be properly reinforced, or use of special fasteners employed, to prevent the mounting screw from pulling out.
- All dimensions are given in inches with corresponding metric dimensions (mm) in parenthesis.

Components:

Optional Architectural Metal Cover

Arm Identification		Arm Stamping Arm Part Number	
Door Width		Non Hold Open	Hold Open
28" - 32" (0.70 - 0.80m)	6100-11 11-6100-0235	6100-1 11-6100-0232	
33" - 41" (0.85 - 1.00m)	6100-13 11-6100-0236	6100-3 11-6100-0233	
42" - 48" (1.05 - 1.20m)	6100-14 11-6100-0237	6100-4 11-6100-0234	

Template Information

- Door template is typical for all installations.
- Frame template must be selected according to frame reveal:

Frame Template at right

Frame Reveals 1-7/8 (48) to 4-5/8 (117).
(Uses 6190 Bracket) Bracket Illustration – Page 4.



Frame Template: Page 2

Frame Reveals Over 4-5/8 (117).
(Uses 6191 Clamp Kit) Bracket Illustration – Page 4.



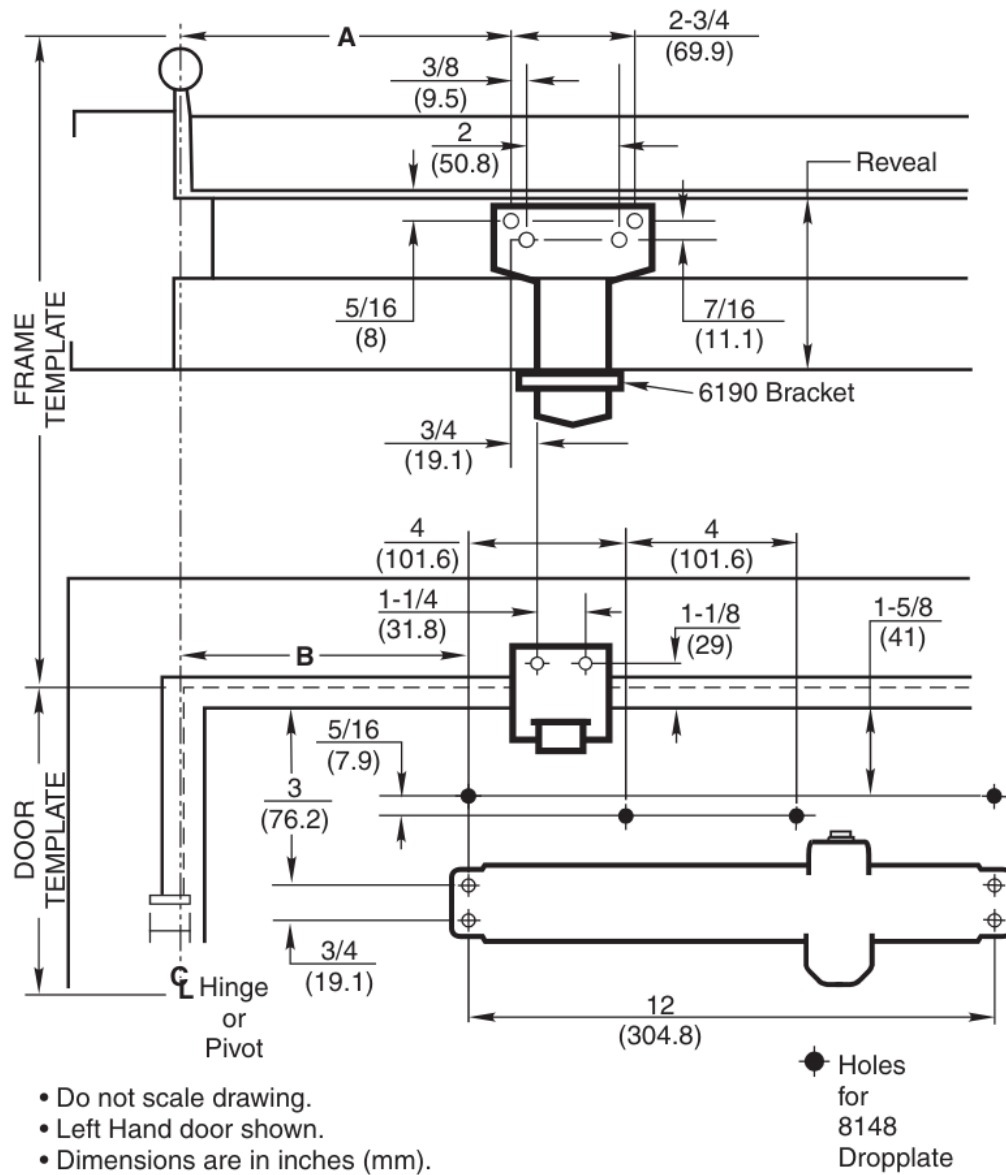
Frame Template: Page 3

Frame Reveals 0 to 1/8 (0 to 3).
Flush Partitions (Uses 589L Bracket).



Inches	mm	Inches	mm	Inches	mm
5/16	7.9	3-1/4	83	8-7/8	225
3/8	9.5	3-5/8	90	9-1/4	235
7/16	11.1	4	101.6	9-3/4	248
1/2	12.7	4-3/8	111	10-1/8	257
3/4	19.1	4-1/2	114	10-3/8	264
1-1/8	29	4-7/8	124	10-1/2	267
1-1/4	31.8	5-1/8	130	11	279
1-1/2	38.1	5-1/4	133	11-1/2	292
1-5/8	41	5-3/4	146	12	305
1-3/4	44	6-1/4	159	12-1/8	308
1-7/8	48	6-3/4	171	12-1/2	318
2	50.8	7-1/8	181	12-3/4	324
2-1/8	54	7-1/2	191	13-5/8	346
2-1/2	63.5	7-5/8	194	14-1/4	362
2-3/4	69.9	8-1/8	206	15-1/8	384
2-7/8	73	8-1/4	210		
3	76	8-1/2	216		

Door Template Typical for All Installations
Frame Template for 1-7/8 to 4-5/8 Reveals



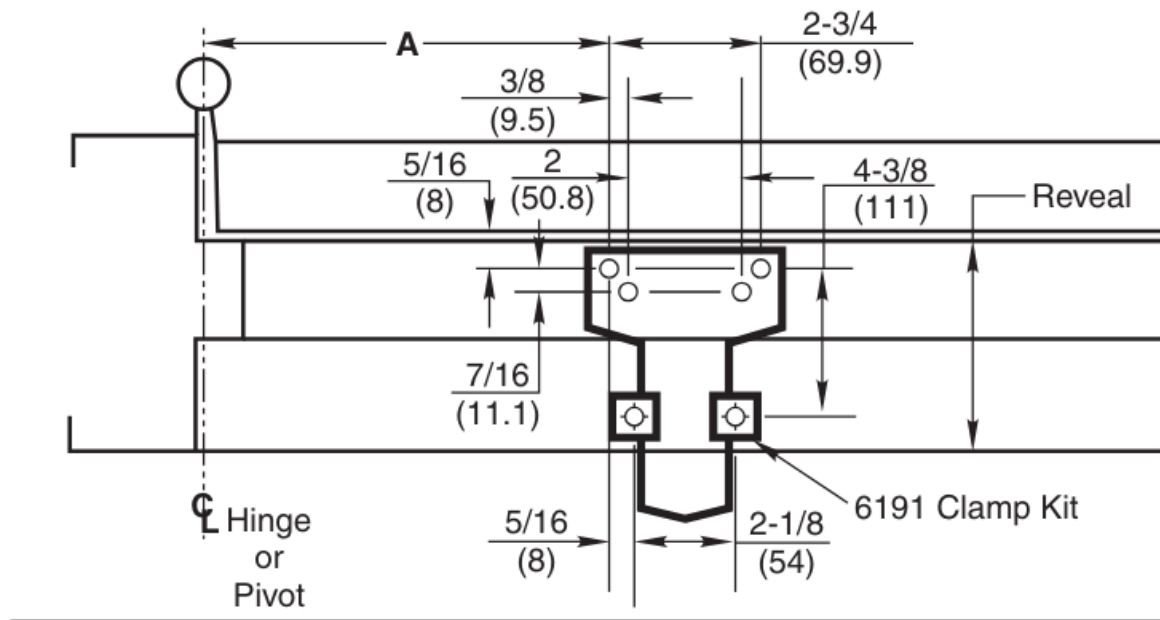
Preparation for Fasteners			
Fasteners		Door or Frame	Drill-Sizes
Standard	Self-Drilling Screw	Aluminum or Metal	No drill required
		Wood	3/16" (4.30 mm)
	1/4" – 20 machine screw	Metal	Drill: #7 (0.201" dia.) Tap: 1/4" – 20
Optional	Sleeve nuts and bolts	Hollow Metal	9/32" (7 mm) through; 3/8" (9.5 mm) door face opposite to closer
		Aluminum or Wood	3/8" (9.5 mm) through
	Through-bolts and grom met-nuts	All	9/32" (7 mm); 3/8" (9.5 mm) dia. x 3/8" (9.5 mm) deep on door opposite to closer

Dimensions for Doors 28" to 32" Wide					
Opening		Dimension A		Dimension B	
Hold Open	Stop	Inches	mm.	Inches	mm.
85°	90°	10-3/8	264	5-1/8	130
90°	95°	9-3/4	248	4-1/2	114
95°	100°	9-1/4	235	4	102
100°	105°	8-7/8	225	3-5/8	92
105°	110°	8-1/2	216	3-1/4	83
110°	115°	8-1/8	206	2-7/8	73

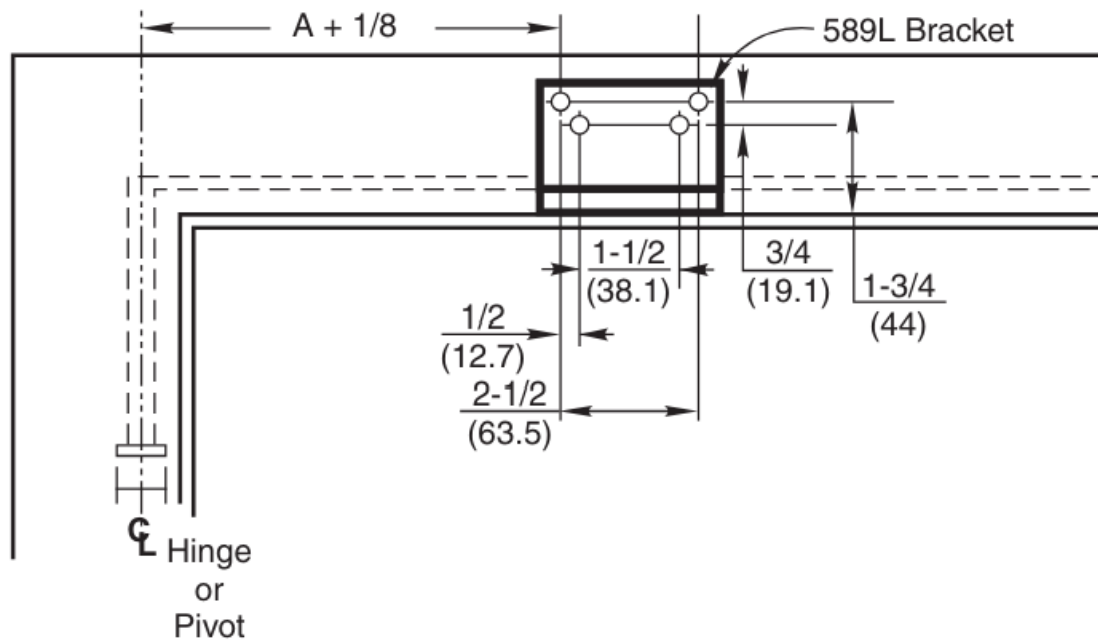
Dimensions for Doors 33" to 41" Wide					
Opening		Dimension A		Dimension B	
Hold Open	Stop	Inches	mm.	Inches	mm.
85°	90°	12-3/4	324	7-1/2	191
90°	95°	12	305	6-3/4	171
95°	100°	11-1/2	292	6-1/4	159
100°	105°	11	279	5-3/4	146
105°	110°	10-1/2	267	5-1/4	133
110°	115°	10-1/8	257	4-7/8	124

Dimensions for Doors 42" to 48" Wide					
Opening		Dimension A		Dimension B	
Hold Open	Stop	Inches	mm.	Inches	mm.
85°	90°	15-1/8	384	9-3/4	248
90°	95°	14-1/4	362	8-7/8	225
95°	100°	13-5/8	346	8-1/4	210
100°	105°	13	330	7-5/8	194
105°	110°	12-1/2	318	7-1/8	181
110°	115°	12-1/8	308	6-3/4	171

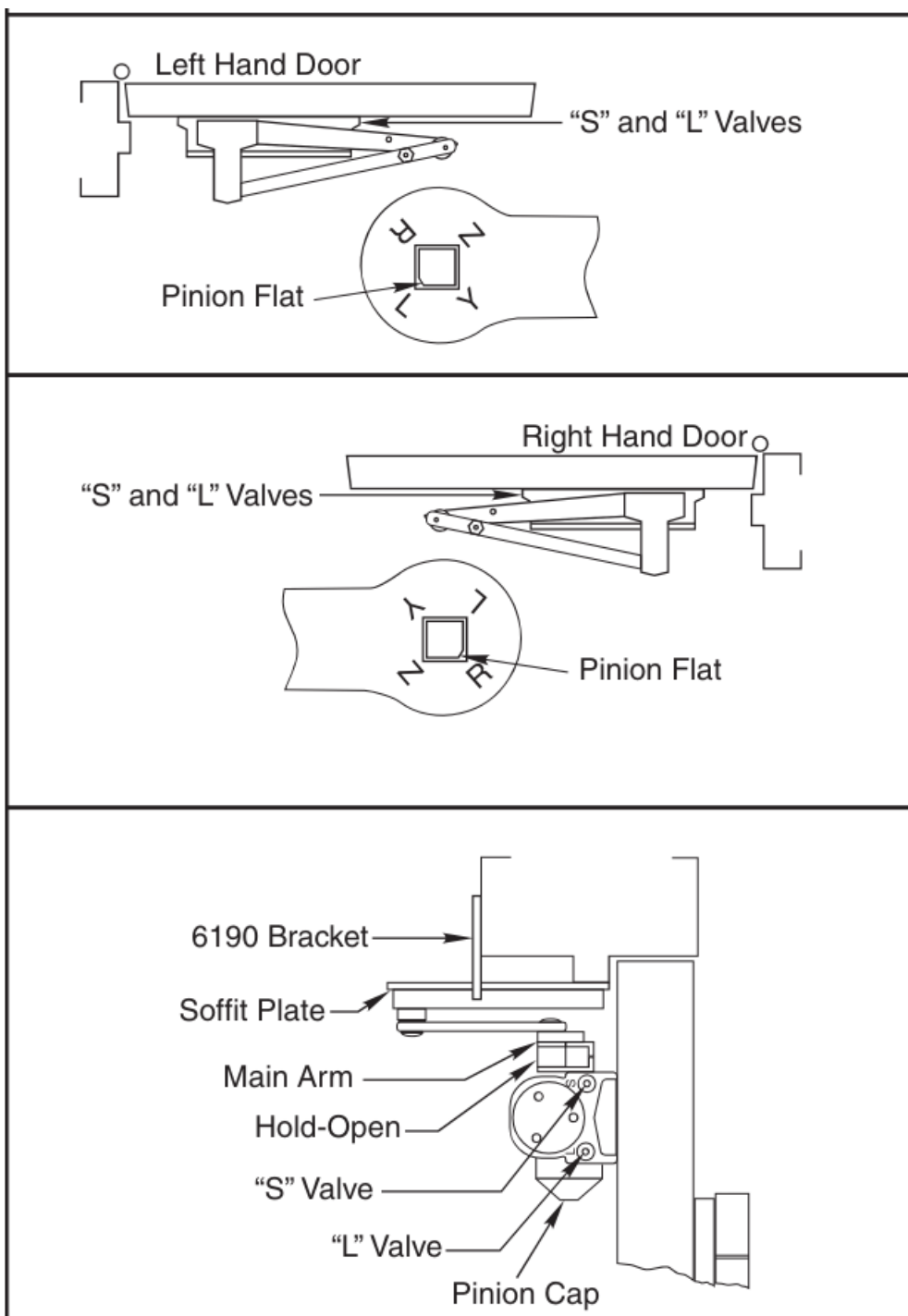
Frame Template for Reveals Over 4-5/8 Door Template on Page 2



Frame Template for Flush Partitions Door Template on Page 2



Typical Installation



Installation Sequence

- **Read Front Page.**

Installations and component identification are on this page. Arm assembly must be correct for width of door, see chart.

Select Correct Door and Frame Template Combination.

Follow "Template Information" on Page 2 or Pages 2 and 3.

- **Mark Location of Mounting Holes.**

Use dimensions for hold-open or door stop angle desired. Mark position of 4 holes on door for closer (or drop plate) and 6 holes on frame for soffit plate (or 4 for 589L angle bracket).

- **Prepare Holes for Fasteners.**

See chart on Page 2.

- **Set closer average power.**

For multi-size closers only, use “Power Setting-Multisize Closers” chart on page 4.

- **Mount Closer to Door.**

Drop plate first, if used. Place end with “S” and “L” valves toward the lock edge of the door. (Slip clips for optional full metal cover under closer feet.)

- **Mount Arm to Frame.**

Fasten soffit plate (or 589L angle bracket if flush partition) to frame. Mount 6190 bracket or 6191 clamps to reinforce soffit plate. Or fasten 589L bracket to frame and then soffit plate to 589L.

- **Install Arm on Pinion Shaft.**

Close valves “S” and “L”. Rotate pinion over 45° to align main arm letter “R” (right hand) or “L” (left hand) with pinion flat. Fasten with arm screw. See “Typical Installation” figure above right. Re-open valves “S” and “L”.

- **Adjust Closer.**

See “Unit Adjustment” on Page 4.

- **Install Cover and Pinion Cap (if required).**

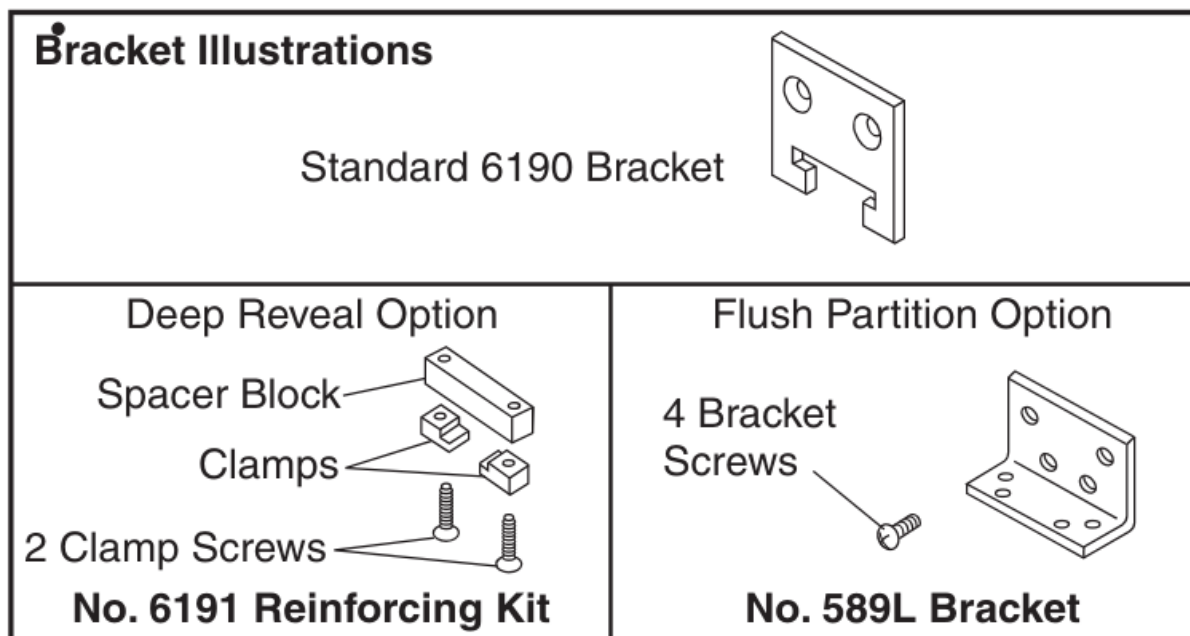
Full Cover: Install cover using screws provided. Screw pinion cap onto shaft by hand or with a Phillips screwdriver – DO NOT OVER TIGHTEN.

Narrow Cover: Fasten cover to mounting clips with screws provided.

Full Metal Cover: Remove cover insert where pinion is located. Install standoffs in ends of closer. Install cover using screws provided.

Metal Architectural Cover: Slide cover insert into the un-used cutout in cover. Install standoffs in ends of closer. Install cover using screws provided.

Plastic Architectural Cover: Slide cover insert into the un-used cutout in cover. Install standoffs in ends of closer. Snap cover over standoffs.

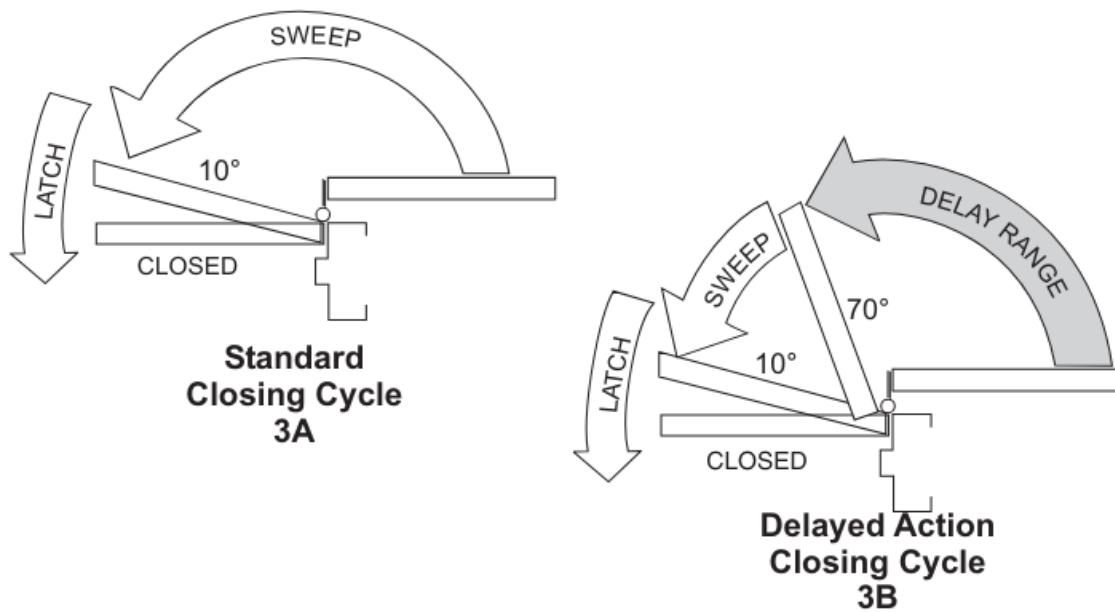


Unit Adjustment

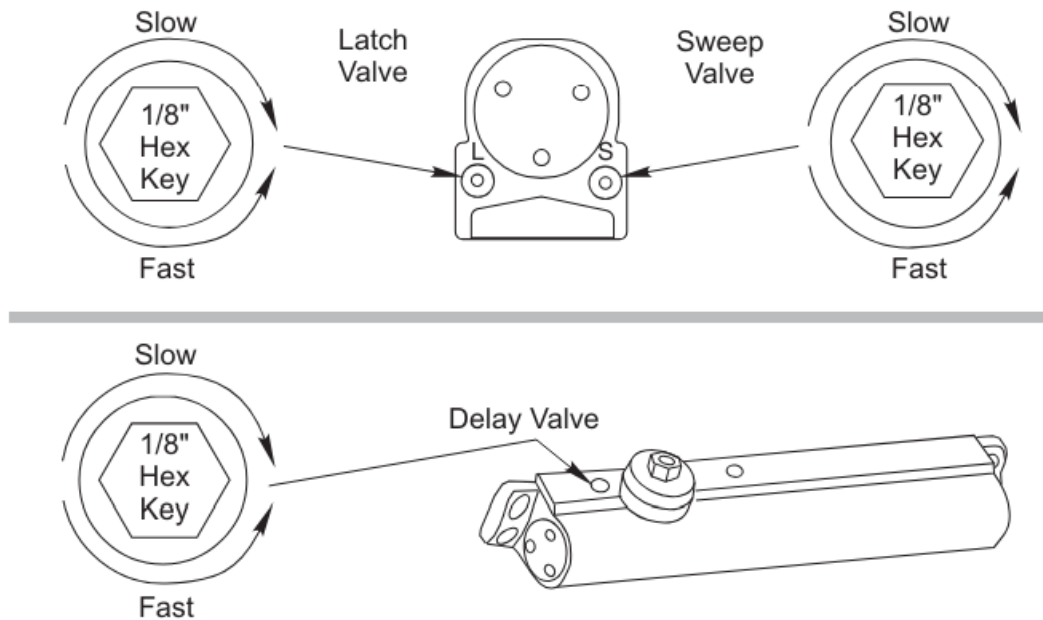
Closing Speed Controls

CAUTION:

DO NOT BACK VALVES OUT OF CLOSER OR A LEAK WILL RESULT.

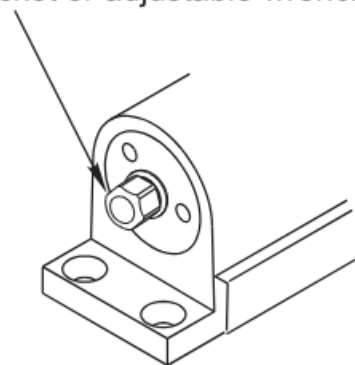


Closing Speed Controls



Closing Power Control

Use 5/16" socket or adjustable wrench for adjustment.

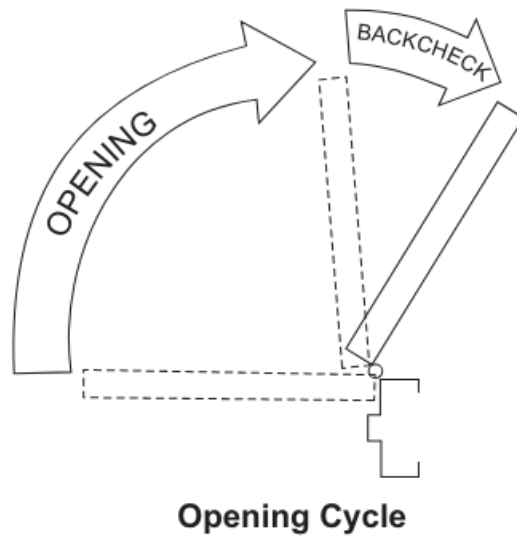


To increase power turn Spring Adjustment Shaft clockwise. A total of 20 360° turns of the nut will provide maximum power.

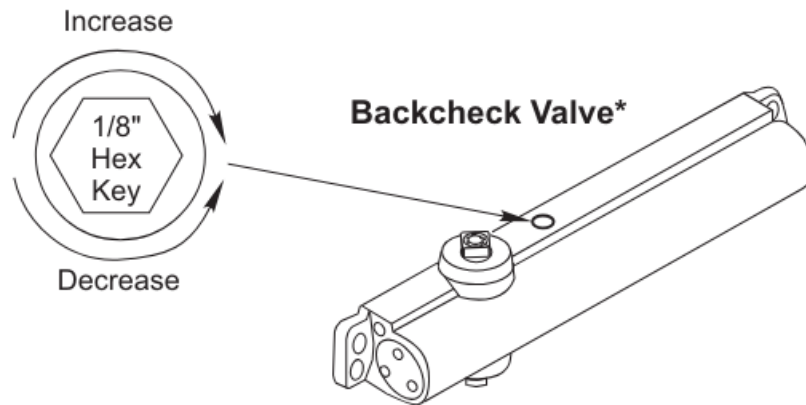
Opening Door Control

CAUTION:

DO NOT BACK VALVES OUT OF CLOSER OR A LEAK WILL RESULT.



NOTE: By law the Americans with Disabilities Act (ADA) may require that door closer installation comply with **Backcheck Control**



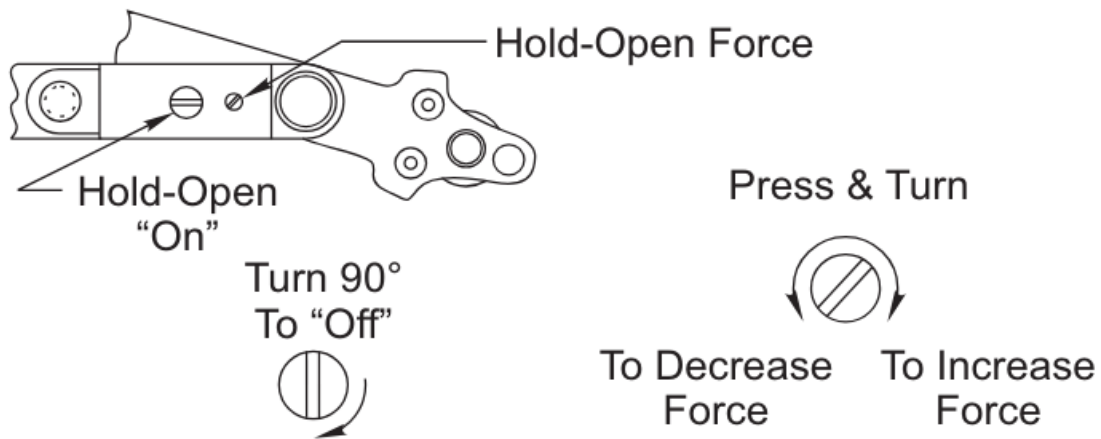
*** NEVER close this valve completely.**

Power Adjustment Chart (for Mult-Size Closers)

DOOR	PARALLEL ARM INSTALLATION	*	MAXIMUM DOOR SIZE			
			28-32" (0.70-0.80 m)	33-41" (0.85-1.00 m)	42-48" (1.05-1.20 m)	Max # of turns
INT	UNI-3301/ UNI-3501	FULL 360° OF POWER ADJUSTMENT SHAFT	7	10	16	20
EXT			9	12	18	20

*20 -360° TURNS MAXIMUM AVAILABLE

Door Holder Option



Hold-Open option is found at the arm elbow. To select hold open “on” or hold-open “off” and to adjust the hold-open force ... use screwdriver as illustrated.

Yale ® is a registered trademark of Yale Security Inc., an ASSA ABLOY Group company.

Copyright © 2007, 2008, Yale Security Inc., an ASSA ABLOY Group company. All rights reserved.

Reproduction in whole or in part without the express written permission of Yale Security Inc. is prohibited.

Yale®

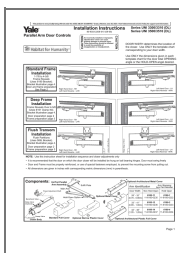
An ASSA ABLOY Group brand

3000 Highway 74 East • Monroe, NC 28112

Tel: (800)-438-1951 • Fax: (800)-338-0965

www.yalecommercial.com

Documents / Resources



[Yale UNI 3000-Series Unitrol Parallel Arm](#) [pdf] Installation Guide

UNI 3000-Series, UNI 3000-Series Unitrol Parallel Arm, Unitrol Parallel Arm, Parallel Arm, Arm

References

- [Home | ASSA ABLOY ACCENTRA™ Commercial Locks | ASSA ABLOY ACCENTRA™](#)
- [User Manual](#)

[Manuals+](#), [Privacy Policy](#)

This website is an independent publication and is neither affiliated with nor endorsed by any of the trademark owners. The "Bluetooth®" word mark and logos are registered trademarks owned by Bluetooth SIG, Inc. The "Wi-Fi®" word mark and logos are registered trademarks owned by the Wi-Fi Alliance. Any use of these marks on this website does not imply any affiliation with or endorsement.