

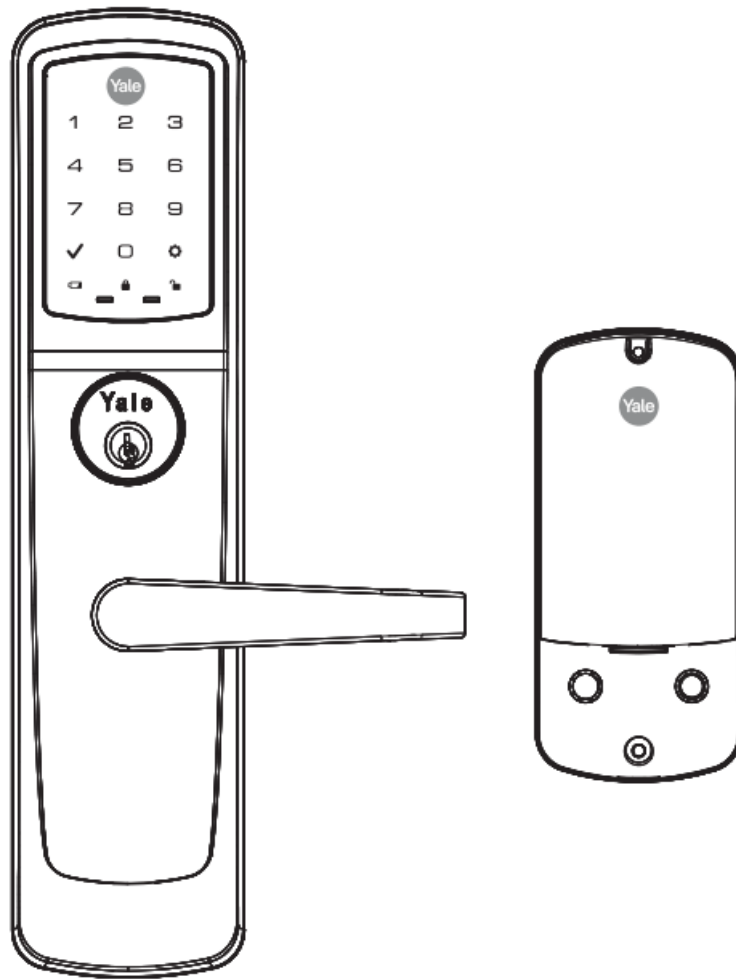


Yale NexTouch Keypad Access Exit Trim Lock Touchscreen and Push Button Instruction Manual

[Home](#) » [Yale](#) » Yale NexTouch Keypad Access Exit Trim Lock Touchscreen and Push Button Instruction Manual



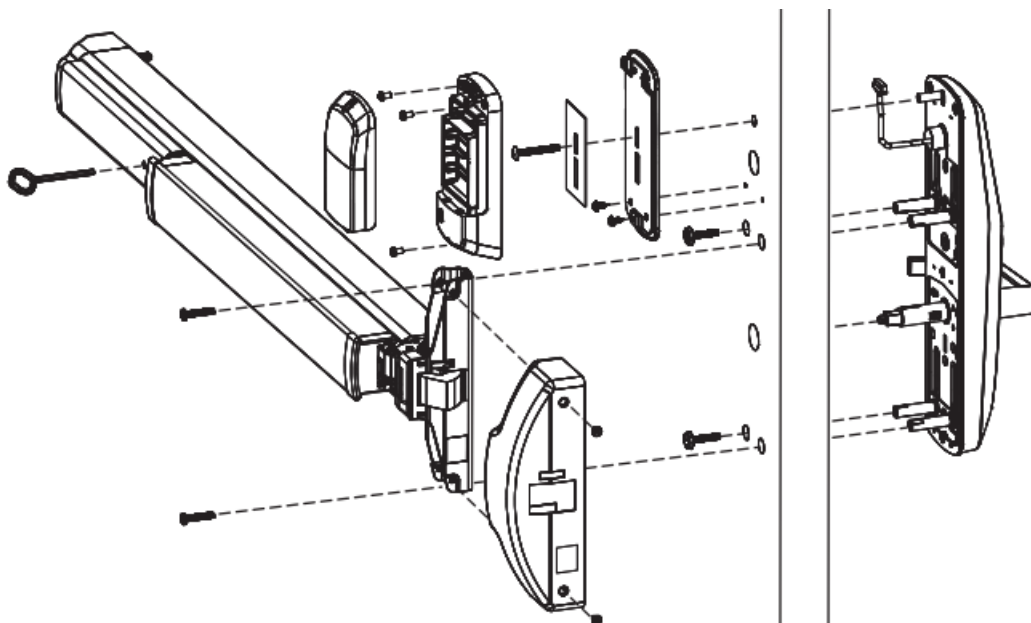
nexTouch™
Keypad Access Exit Trim Lock
Touchscreen and Push Button
Installation and Programming Instructions



WARNING

This product can expose you to lead which is known to the state of California to cause cancer and birth defects or other reproductiveharm. For more information go to www.P65warnings.ca.gov.

08/2018



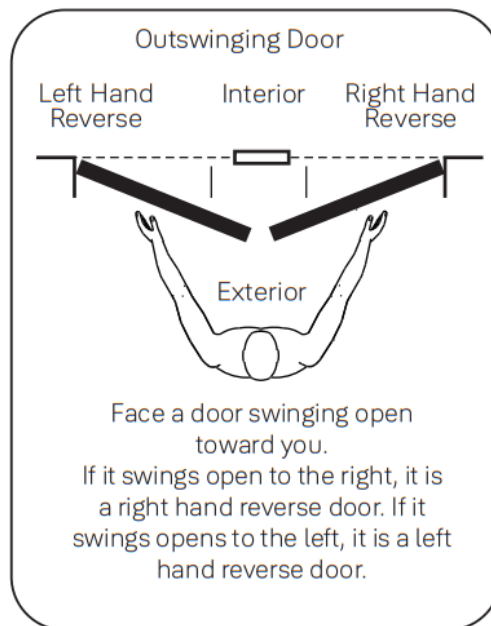
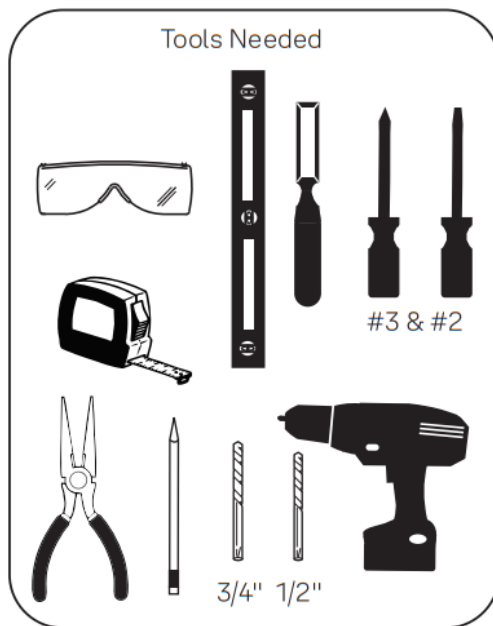
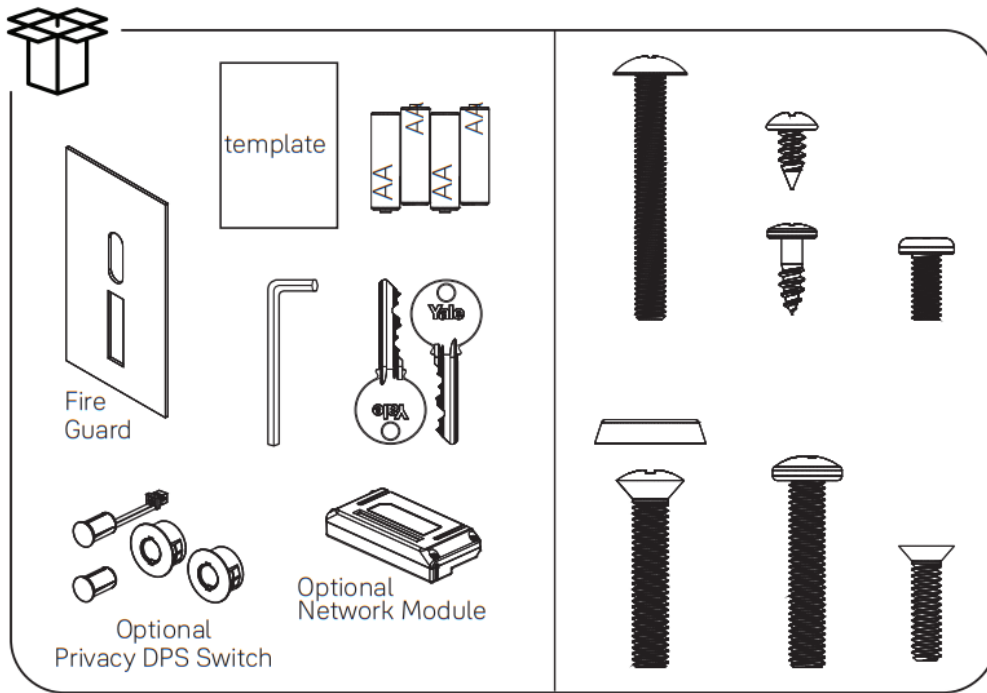
Retrofitting or modifying this product may impact fire rating, safety features and warranty. Consult with code specifications to ensure compliance with all codes and ratings.

Contents

- [1 Before You Begin](#)
- [2 Door Position Switch Option](#)
- [3 Install Cylinder](#)
- [4 Change Hand of Trim \(if necessary\)](#)
- [5 Install Outside Trim Assembly](#)
- [6 Install Exit Device](#)
- [7 Install Strike and Optional DPS](#)
- [8 Install Inside Mounting Plate](#)
- [9 Attach Cables to Inside Lock](#)
- [10 Install Inside Lock](#)
- [11 Documents / Resources](#)
- [12 Related Posts](#)

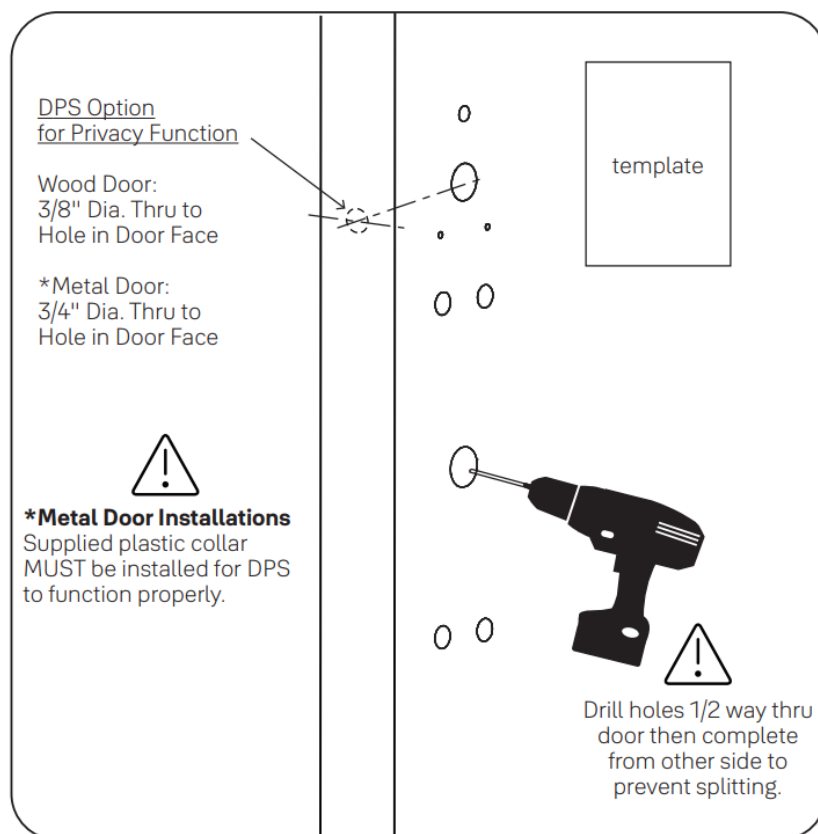


Before You Begin



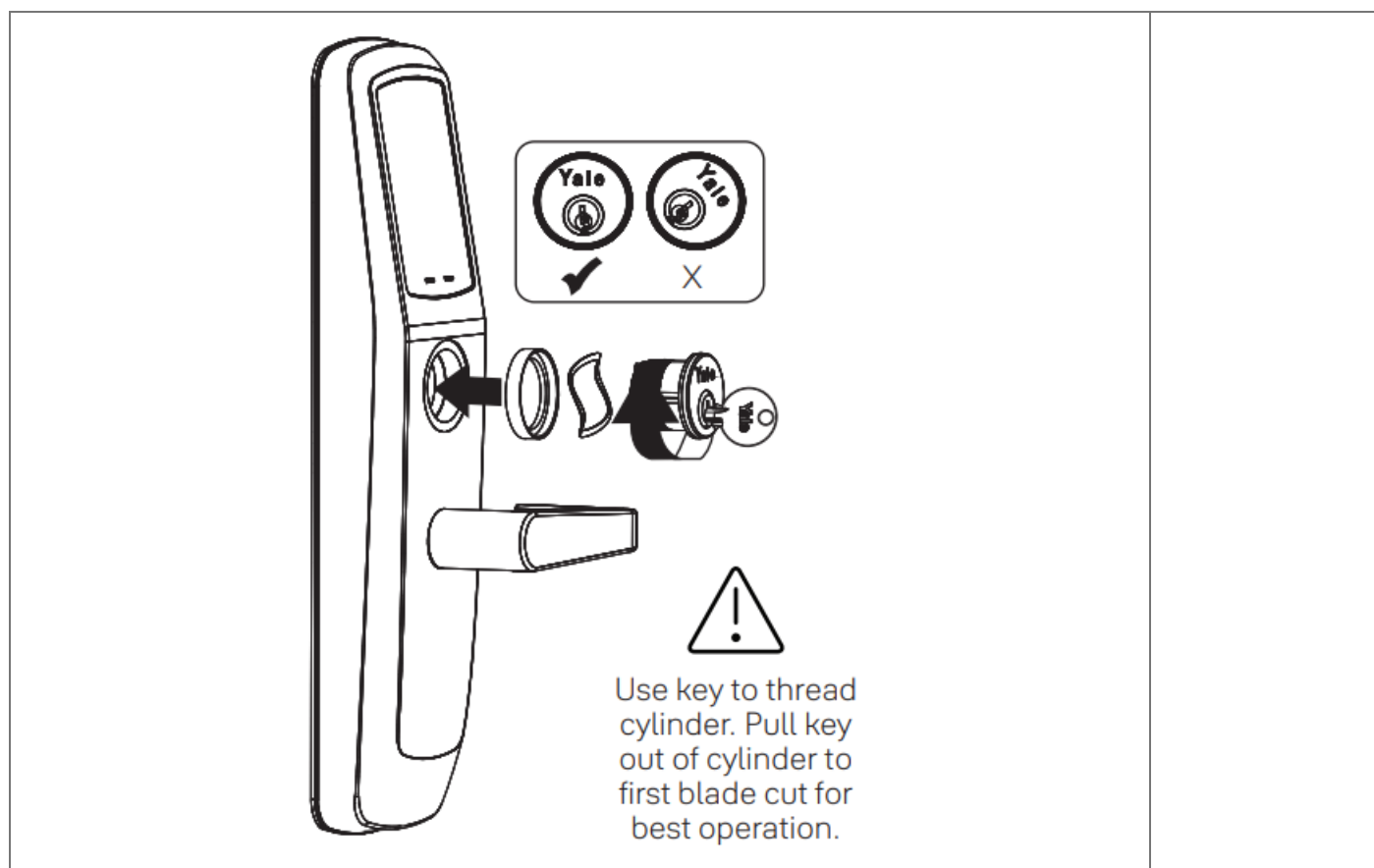
1

Door Position Switch Option



2

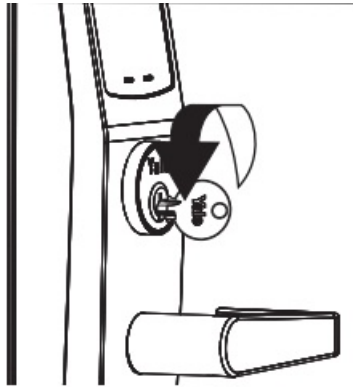
Install Cylinder



If using cylinder other than 1-1/8", a new collar must be used that is sized appropriately for cylinder length.



Test Cylinder



Test cylinder by turning key counter-clockwise to unlock trim.

If there is any binding then cylinder is not at correct depth and needs to be threaded further into escutcheon.



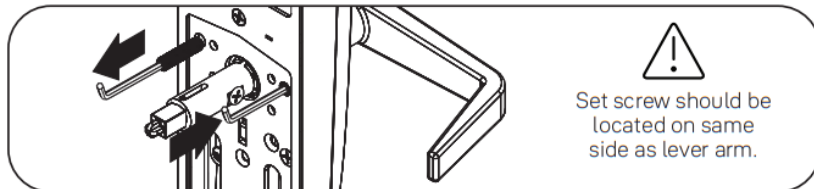
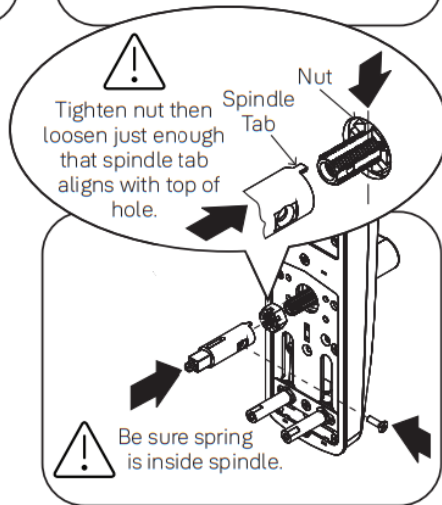
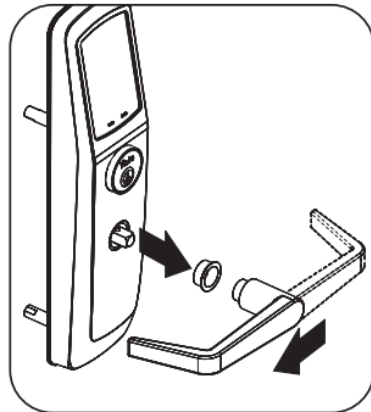
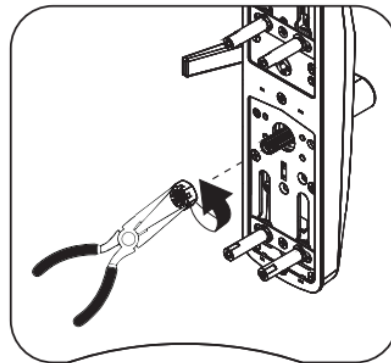
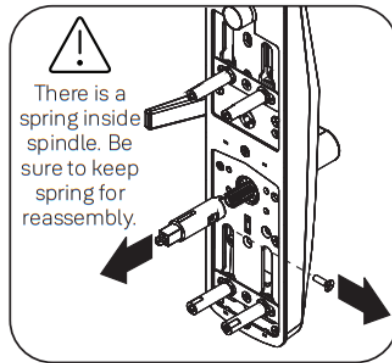
Change Hand of Trim (if necessary)



Left Hand Reverse



Right Hand Reverse



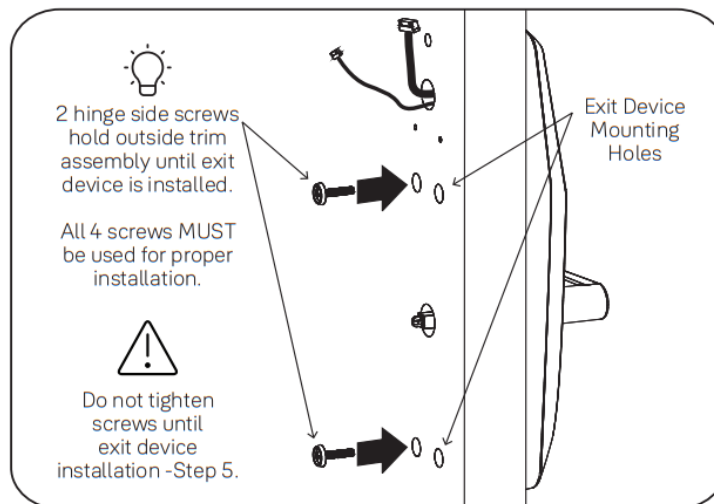
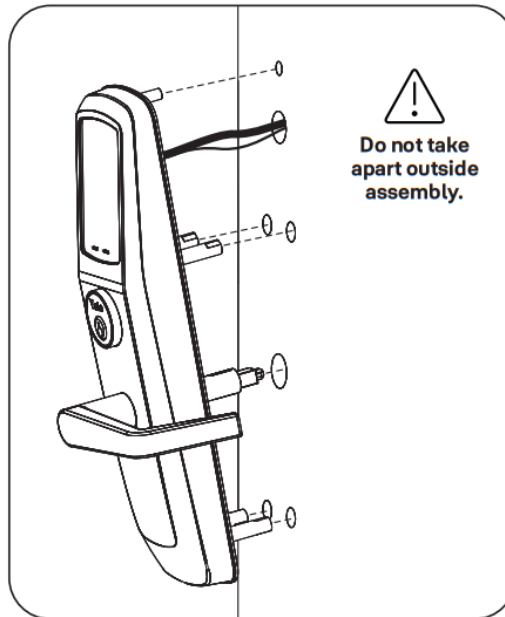
Install Outside Trim Assembly



#10-32 x 1" OHPMS



x2



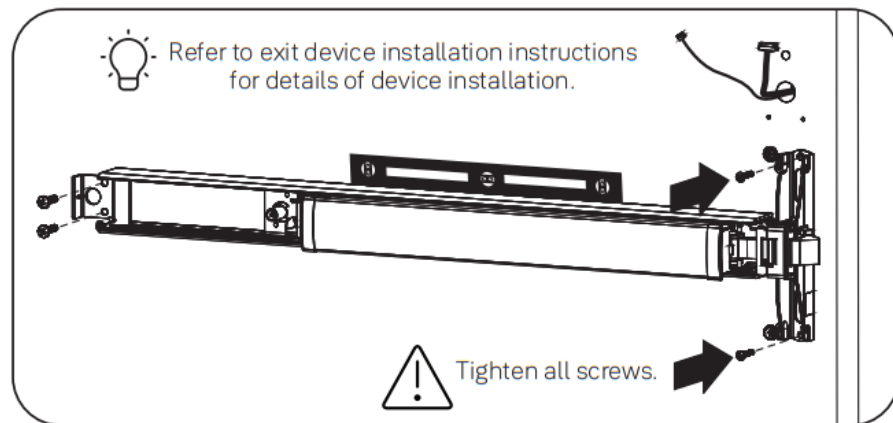
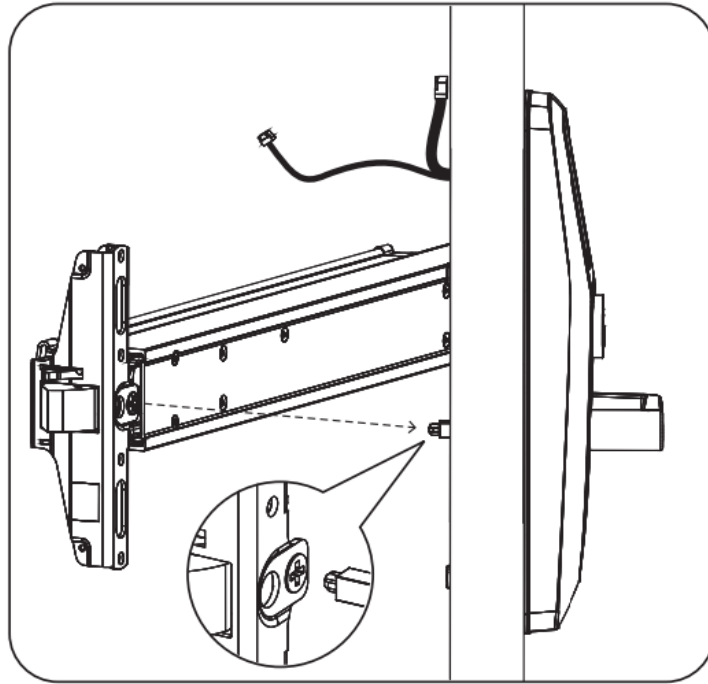
Install Exit Device



#10-32 x 1" PHMS



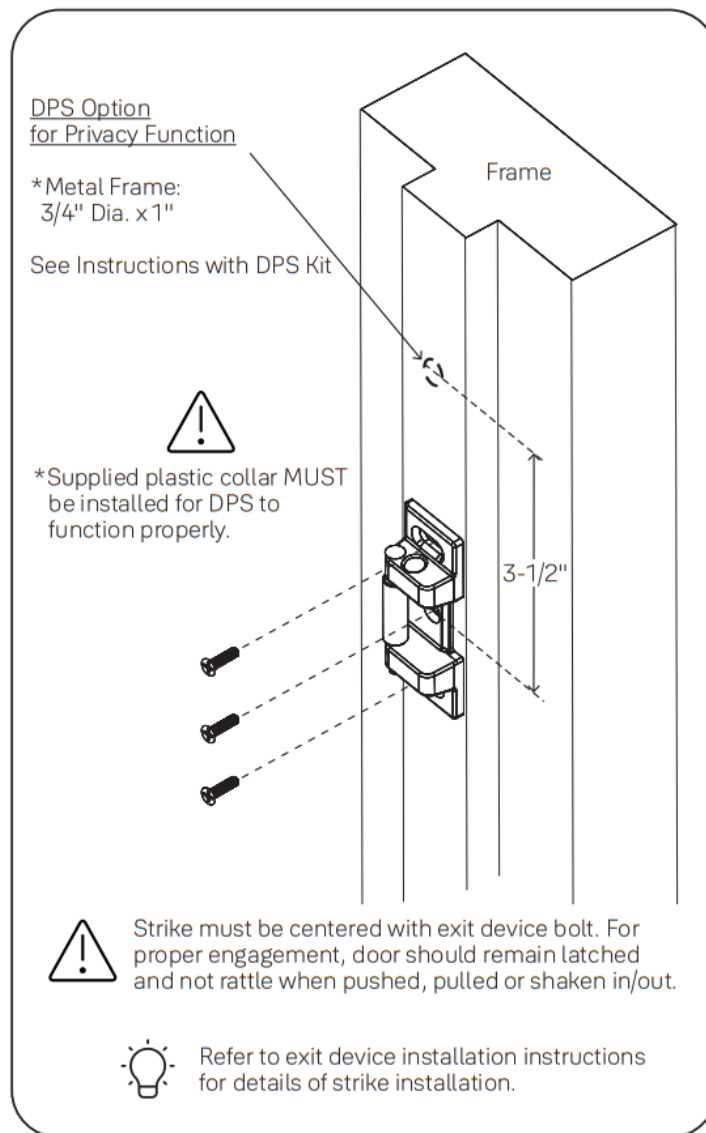
x2



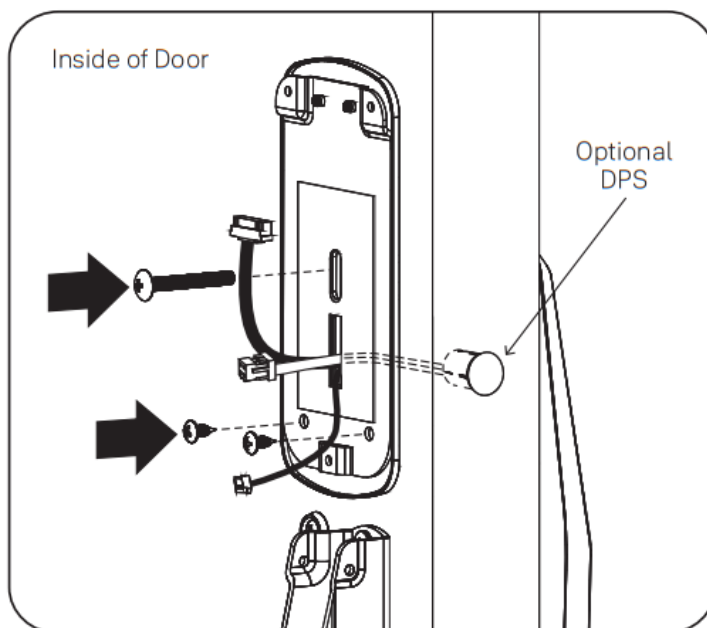
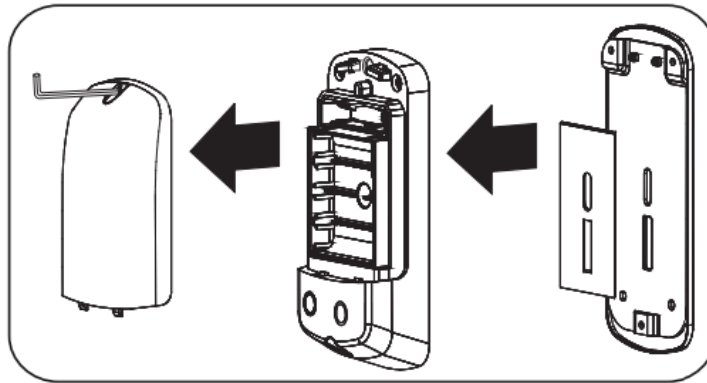
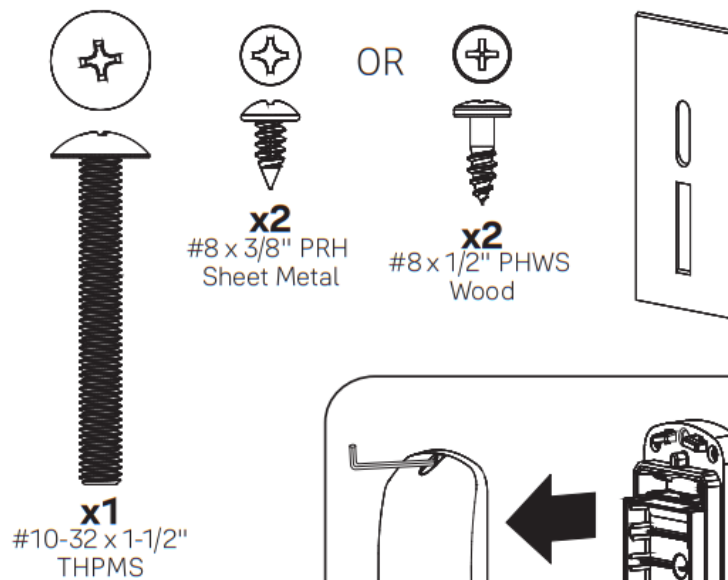
Test Mechanical Lock Function by
Key, Lever and Keypad



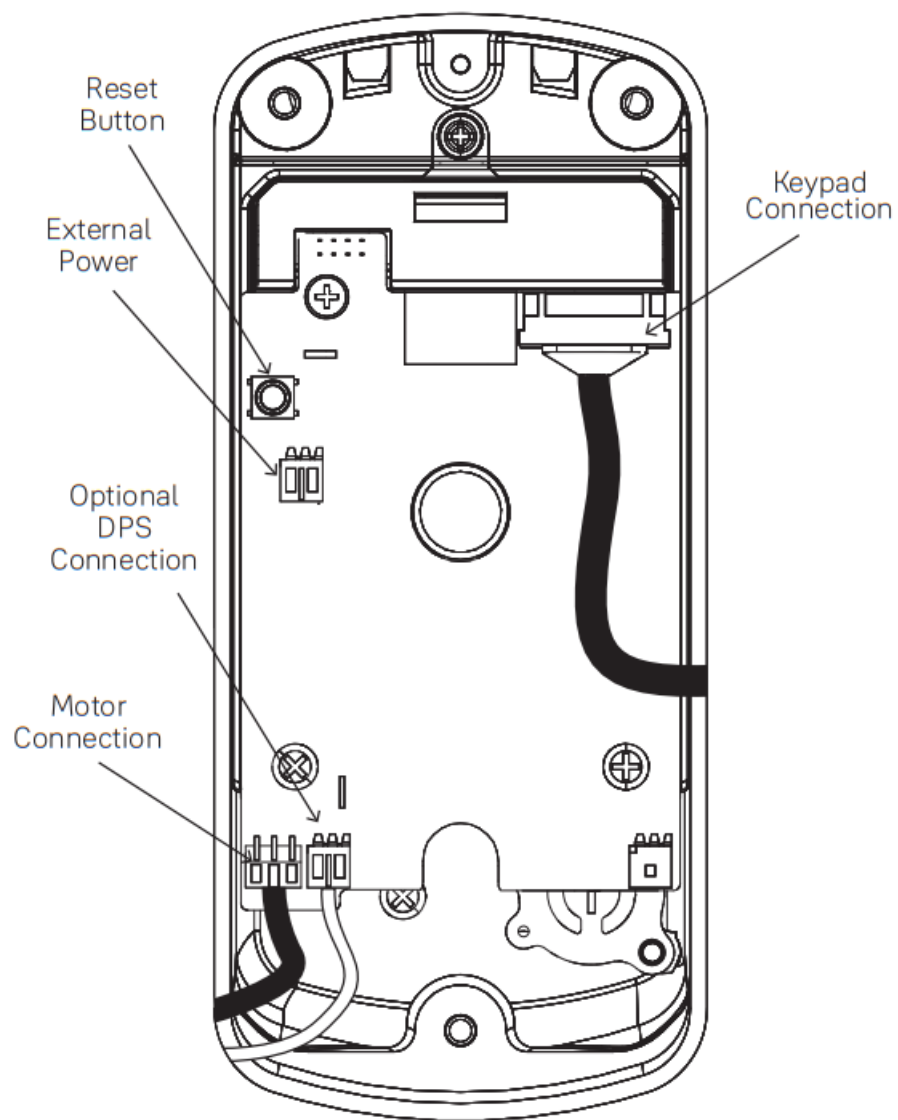
Install Strike and Optional DPS




Install Inside Mounting Plate



Attach Cables to Inside Lock

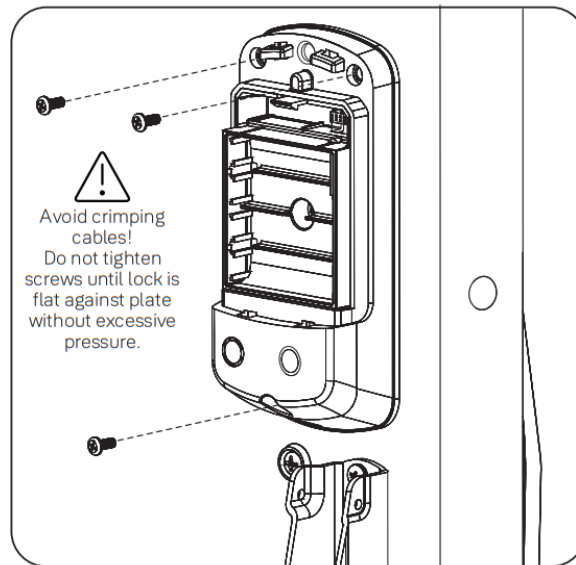


Install Inside Lock

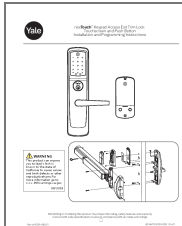
 #8-32 x 5/16" PHMS



x3



Documents / Resources



[Yale NexTouch Keypad Access Exit Trim Lock Touchscreen and Push Button](#) [pdf] Instruction Manual
NTT600TSACC, 2ABFG-NTT600TSACC, 2ABFGNTT600TSACC, NexTouch Keypad Access Exit Trim Lock Touchscreen and Push Button