



Yale IA-345 Sync Home Security System Installation Guide

[Home](#) » [Yale](#) » Yale IA-345 Sync Home Security System Installation Guide 

Contents

- 1 Yale IA-345 Sync Home Security System
- 2 Product Usage Instructions
- 3 INSTRUCTION
- 4 Yale Smart Living Alarm
- 5 Smart Hub connection
- 6 Device Activation
- 7 Installation
- 8 App Setup/Operation
- 9 Setting up part armed mode and devices behaviour
- 10 Changing your Key Pad PIN
 - 10.1 Managing Alert Notification
- 11 Changing batteries
- 12 Replacing batteries
- 13 Documents / Resources
 - 13.1 References
- 14 Related Posts



Yale IA-345 Sync Home Security System



Specifications

- Product Name: Sync Smart Home Alarm Kit
- Model Number: KM 735815
- Manufacturer: ASSA ABLOY
- Installation Service: Available
- Indoor Use Only
- Relative Humidity: 85% (non-condensing)
- Frequency/Band: 868 MHz FM
- RF Transmission: 18mA

Product Usage Instructions

Installation

If you would like professional installation, you can contact our Installation Partners. Visit yalehome.co.uk/installation for more information.

Pet-Friendly PIR Motion Detectors

If you have pets that may climb on furniture, it is recommended to set your PIR Motion Detectors at around 1.8 meters.

Walk Test

To carry out a walk test, follow these steps:

1. Open the app and go to settings.
2. Select alarm settings and then walk test.
3. Press the learn button on each device to test the signal.

Water Sensor Installation

When installing the water sensor, please follow these steps:

1. Ensure the sensor is fitted into brick and not the mortar.
2. Use the correct drill bit for installation.

Alarm App Features

If you want to know more about the features of your Alarm app, refer to the app manual sections within the app. Select the “?” at the top right of the screen for help.

Replacing Batteries

To replace the batteries, follow these steps:

1. Open the device.
2. Remove the old batteries.
3. Insert new CR123A 3V batteries.

Frequently Asked Questions (FAQ)

Q: Can I use the Sync Smart Home Alarm Kit outdoors?

A: No, the Sync Smart Home Alarm Kit is designed for indoor use only.

Q: Where can I find more support for the product?

A: For more support, you can visit our website at yalehome.co.uk/support.

Q: Is the product compliant with regulations?

A: Yes, the product is compliant with Directive 2014/53/EU. You can find the full text of the EU declaration of conformity at yalehome.co.uk/declarations-of-conformity.

Thank you for choosing the Yale Sync Smart Home Alarm.

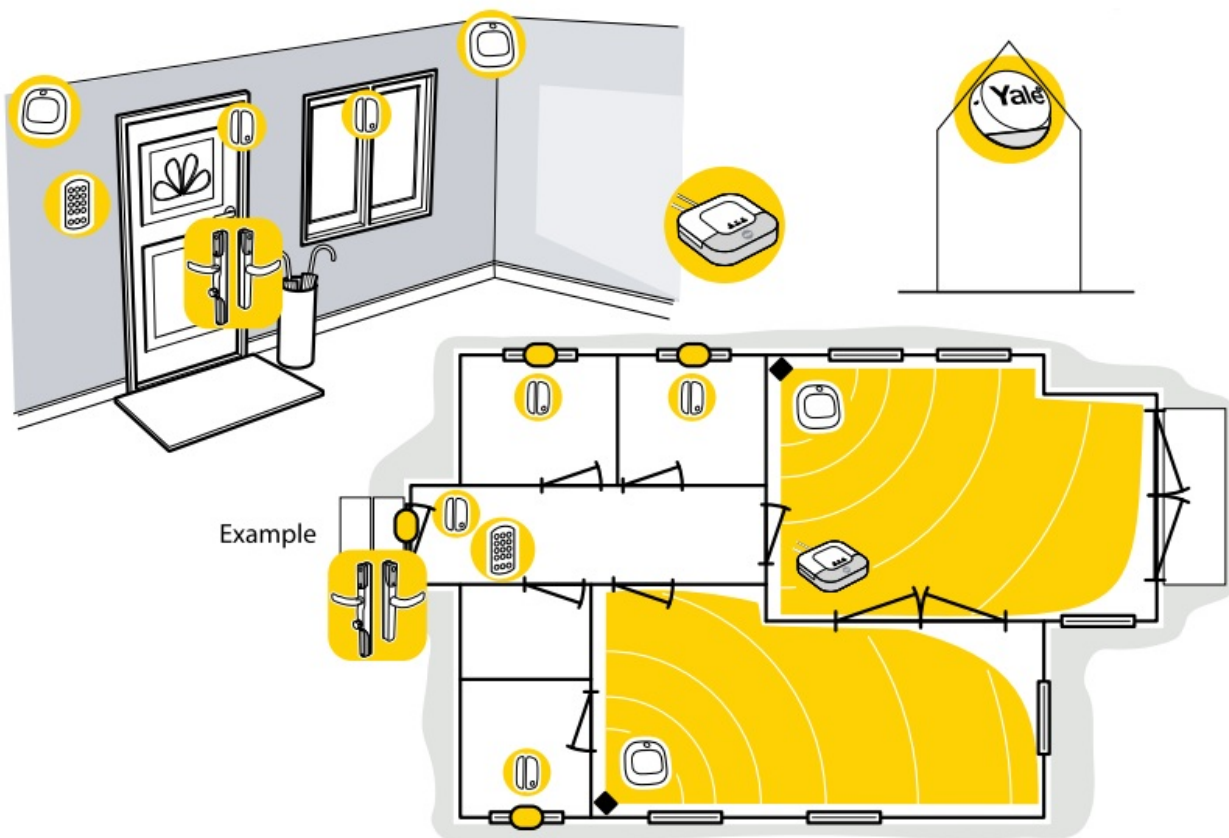
Installation Service

Want us to install this product?

Why not let our Installation Partners take care of it for you.

Find out more about installation at Yalehome.co.uk/installation

INSTRUCTION

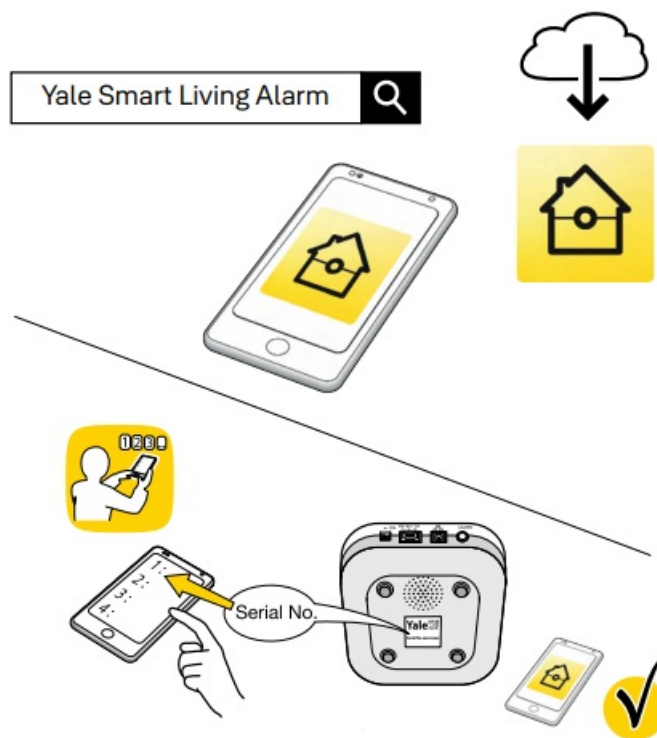


Location tips:

1. Keypad should be accessible from a protected entry/exit point. Ensure that the Keypad is not visible from the outside of the premises.
2. Mount Door/Window Contacts as high as possible on the door/window frame.
3. PIR Motion Detectors should be located in the corner of the room to maximise coverage.
Do not point directly at a source of heat (eg.fires or boilers), facing a window or a door protected by a Door/Window Contact. Avoid installing directly above radiators.
4. If you have pets that may climb on furniture, ensure your PIR Motion Detectors are set at around 1.8metres.
5. Mount the external siren as high as possible on an external wall.

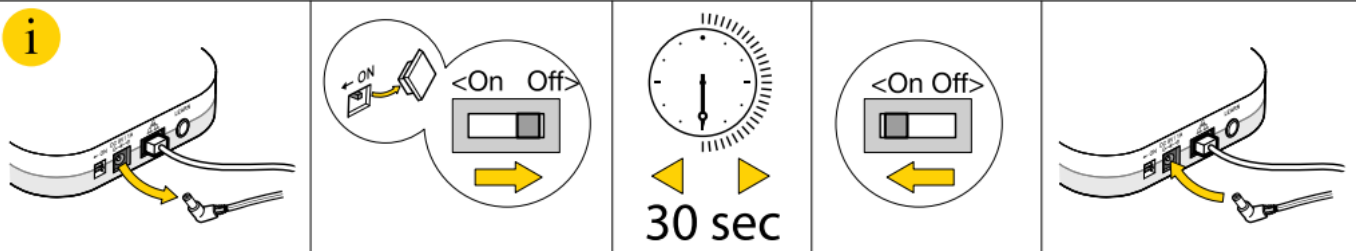
Download the app, create an account and follow the on screen step by step set up wizard.

Yale Smart Living Alarm



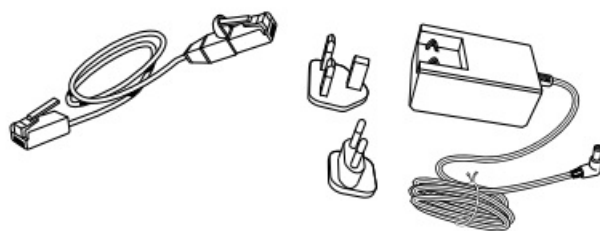
Please register the hub within one hour of power up, otherwise the app “authentication error” will appear. Re-boot the hub(including switch off/on the back up battery) and start the process again if necessary.

Re-boot



Smart Hub connection

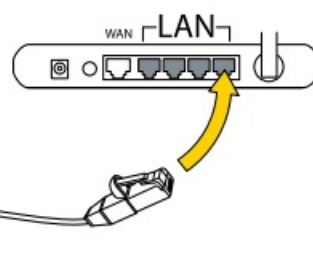
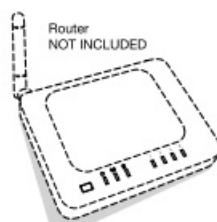
①



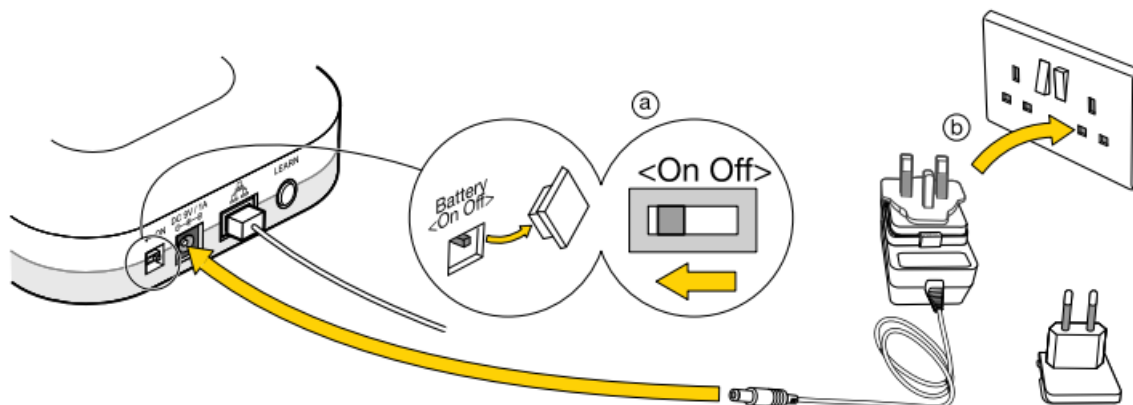
②

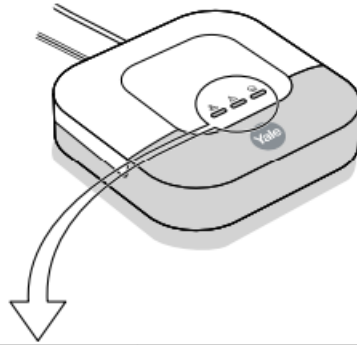










③



④





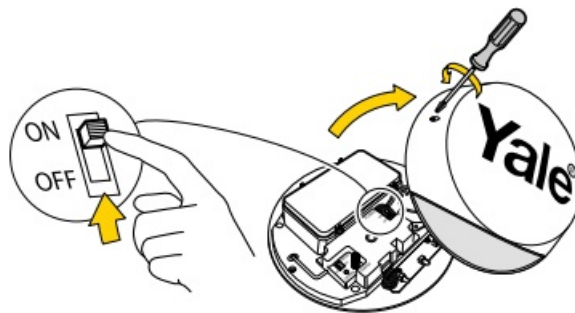
Network Shows server connection status	  	
Fault Status Shows fault status and AC failure warning	  	<p>Check app history log to see fault details.</p>  <p>System normal.</p>

Device Activation

To carry out a walk test go to the app:

Once in walk test please press the learn button on each device to test the signal.

Lay on flat surface

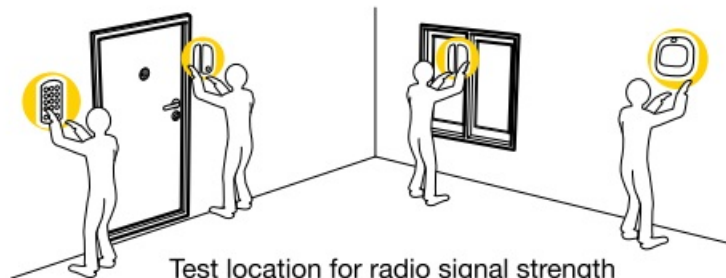


Test your planned location of components

~200 m

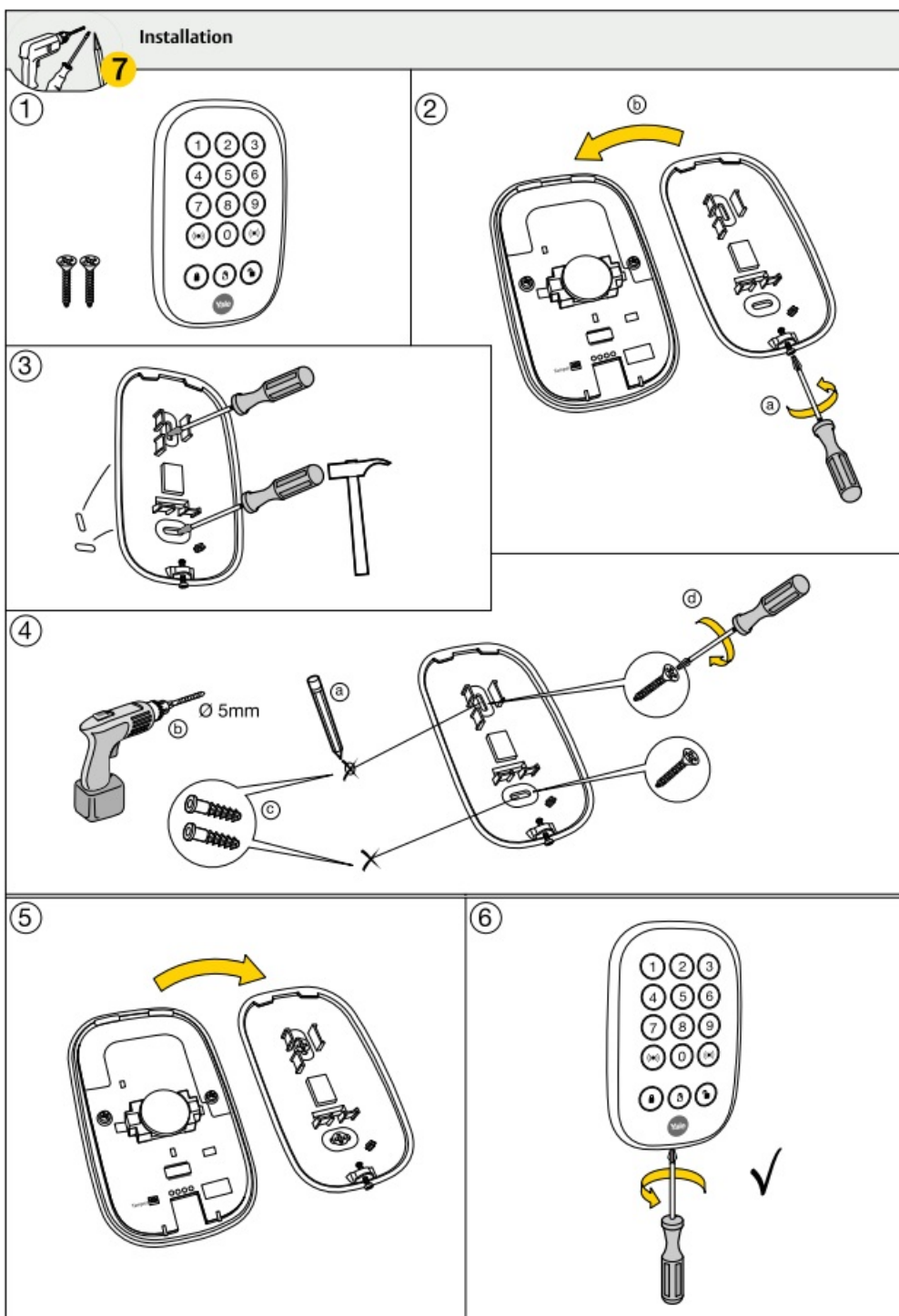


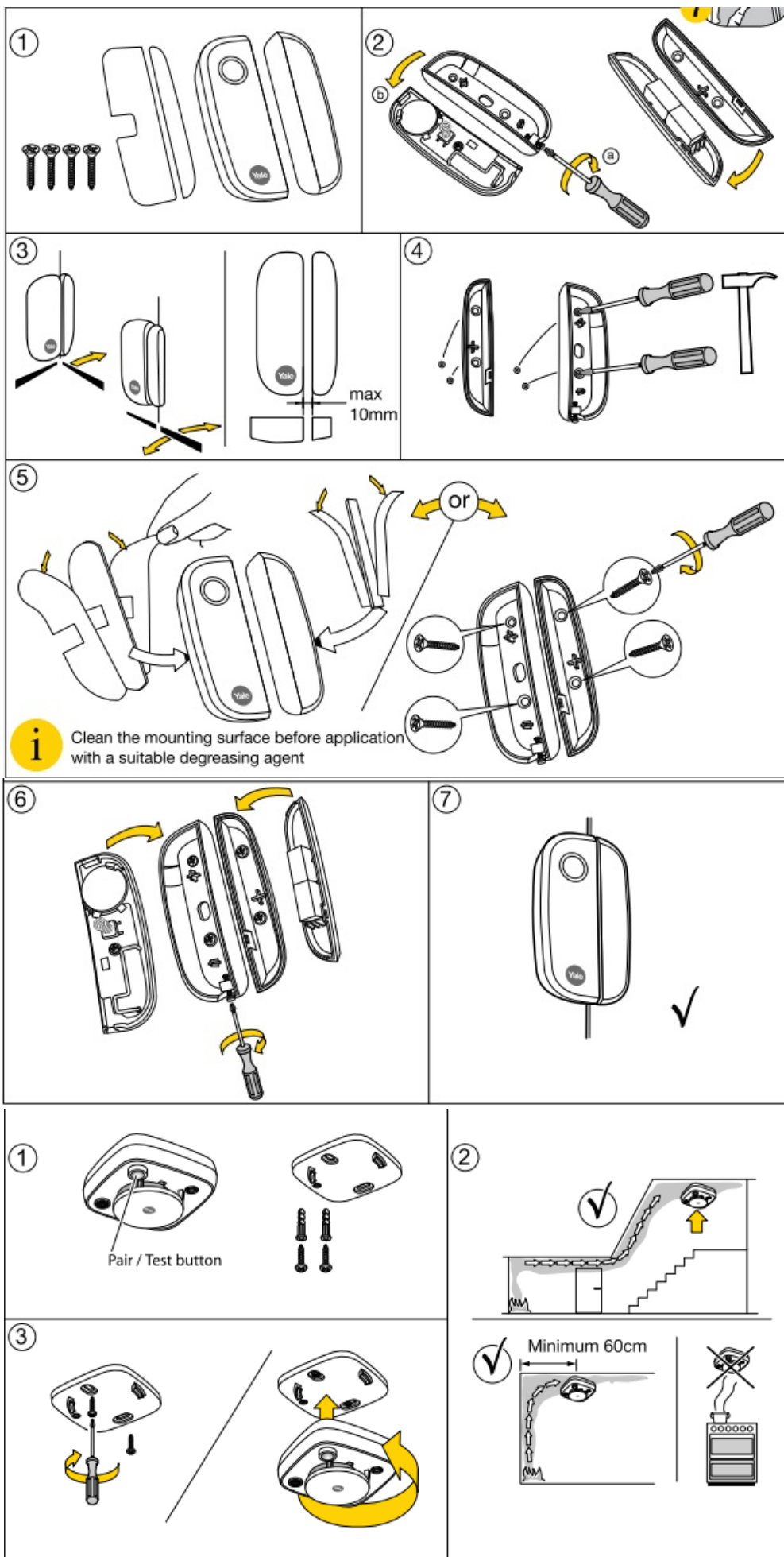
Press button to test connection

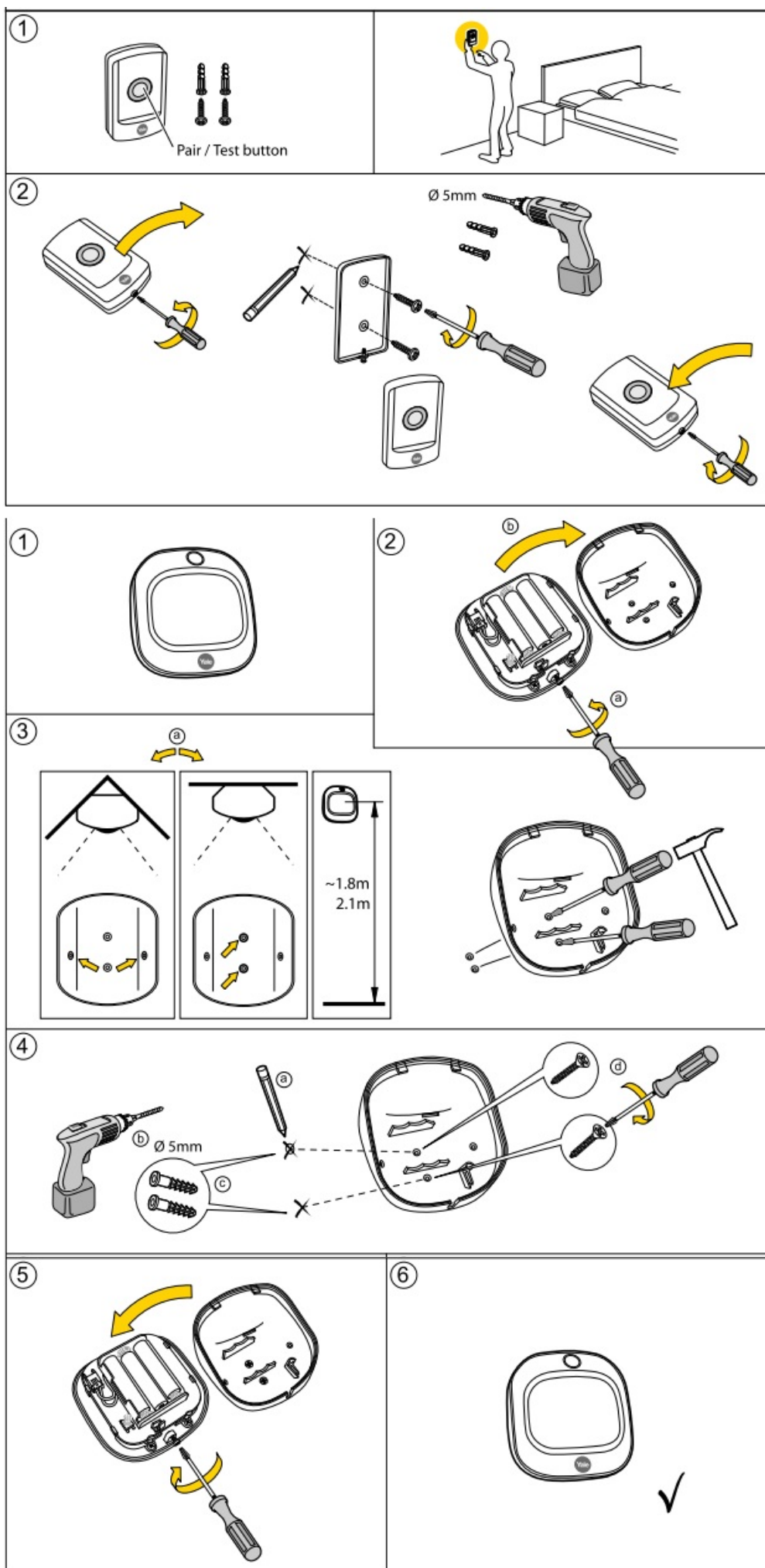


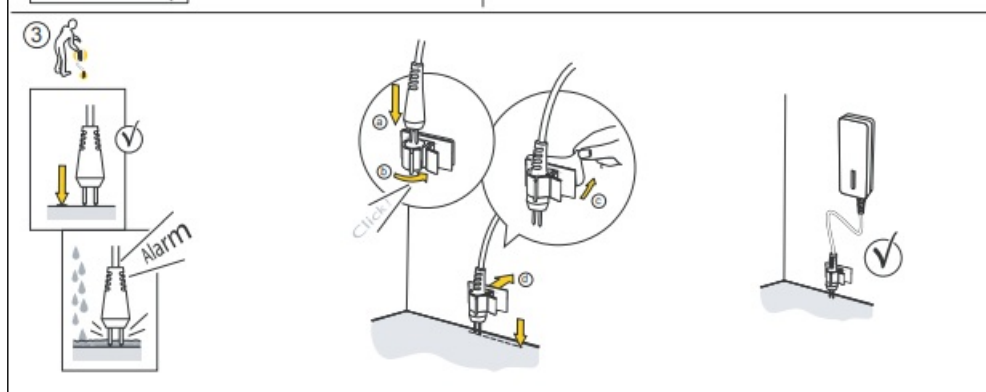
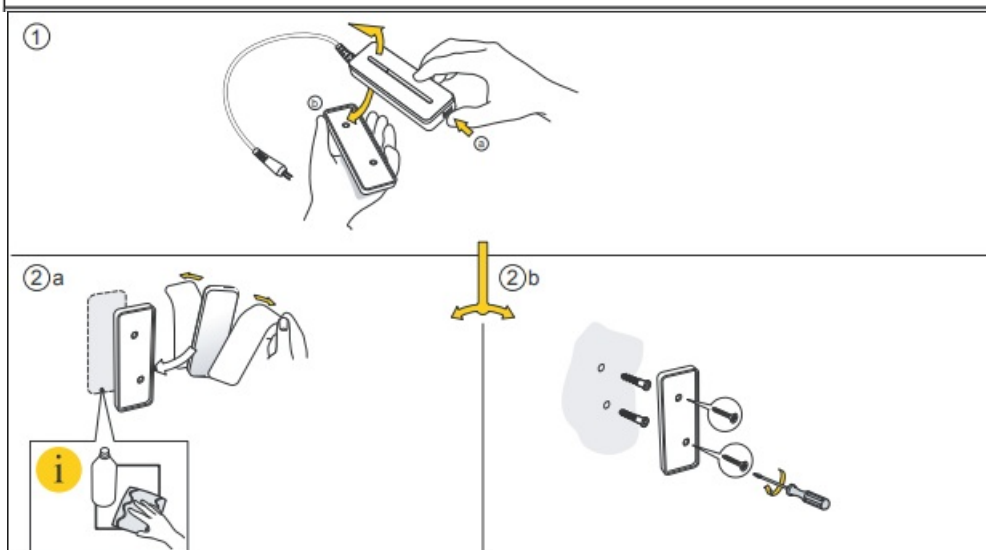
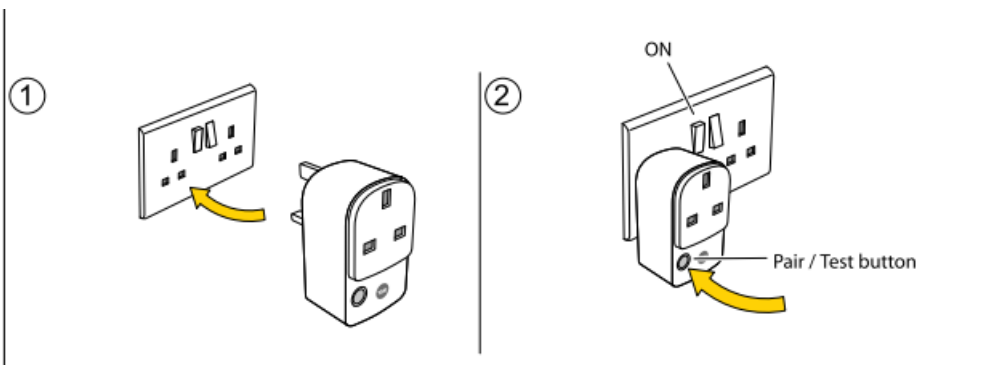
Test location for radio signal strength

Installation









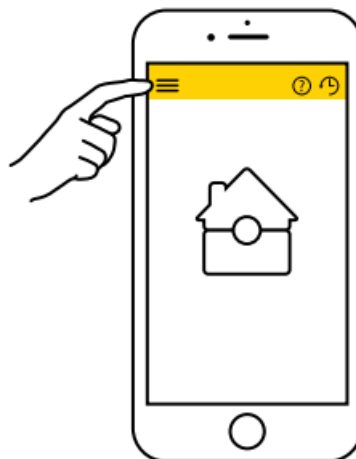
1. Go to the app menu and select Add Device, then activate learning mode.
2. Press the learn button on the device you want to add, the Smart Hub will beep when the device is added. You will then see the new device on your app screen.



3. Exit Learning mode after you have added all the additional devices.

Setting up part armed mode and devices behaviour

You can change the device behaviour settings to select the required action when the system is fully armed or part armed.






















Go to the App menu

Settings > Alarm settings > Devices

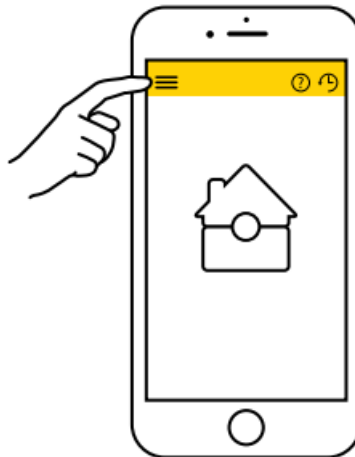
In your device list, go into the settings for each device and select the required device mode. 4 different settings are available for PIR Motion Detectors and Door/Window Contacts. Devices are pre-set to Entry. When the system is armed first users will have 30 seconds to exit the building. If the system is already armed, triggering any sensors will cause an entry countdown to begin.

Part armed mode is usually used to protect the perimeter or a specific zone of the house (eg. ground floor) while you are free to be inside or in another part of the house (eg. upstairs)

	   			Key  Sensor Ignored  Alarm Triggered  Entry/Exit Timer	
	Disarm	Part arm	Full arm		
Burglar					
Entry		 			
Home Omit = part arming					
Home Access = fully armed		 			

Changing your Key Pad PIN

You can modify the existing PIN code using the app. You can set up to 10 sets of 4 digit PIN numbers in the app.



Go to app menu

Settings > Alarm Settings > Key Pad PIN code settings

Adding new users

To add more users to control your alarm system you can add a new account in the app.

Go to app menu

Settings > User Settings > Account Management

Managing Alert Notification

You can manage the different type of notifications, choose to have all events or burglar only reported via email. You can also add phone numbers to receive an SMS notification when burglar event is reported.

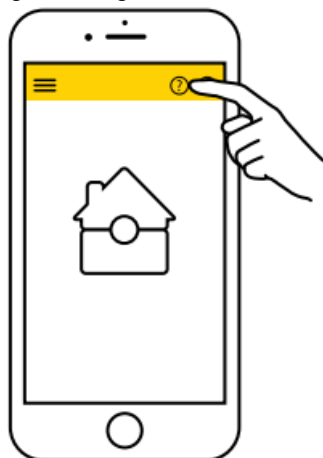
Settings > User Settings > Notification settings

Managing Alert Notification

You can manage the different type of notifications, choose to have all events or burglar only reported via email. You can also add phone numbers to receive an SMS notification when burglar event is reported.

Go to app menu

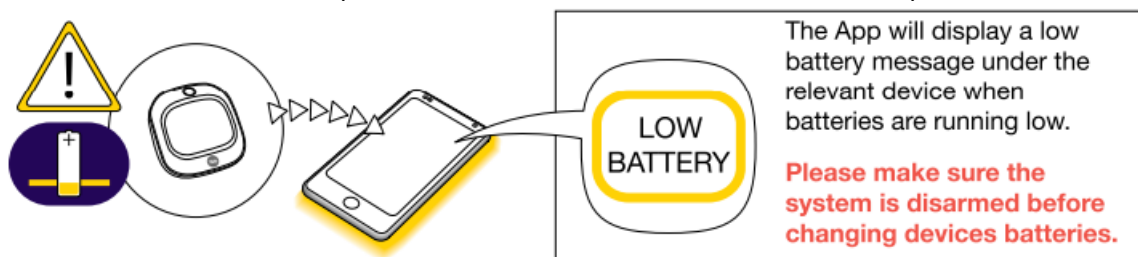
Settings > User Settings > Notification settings Settings

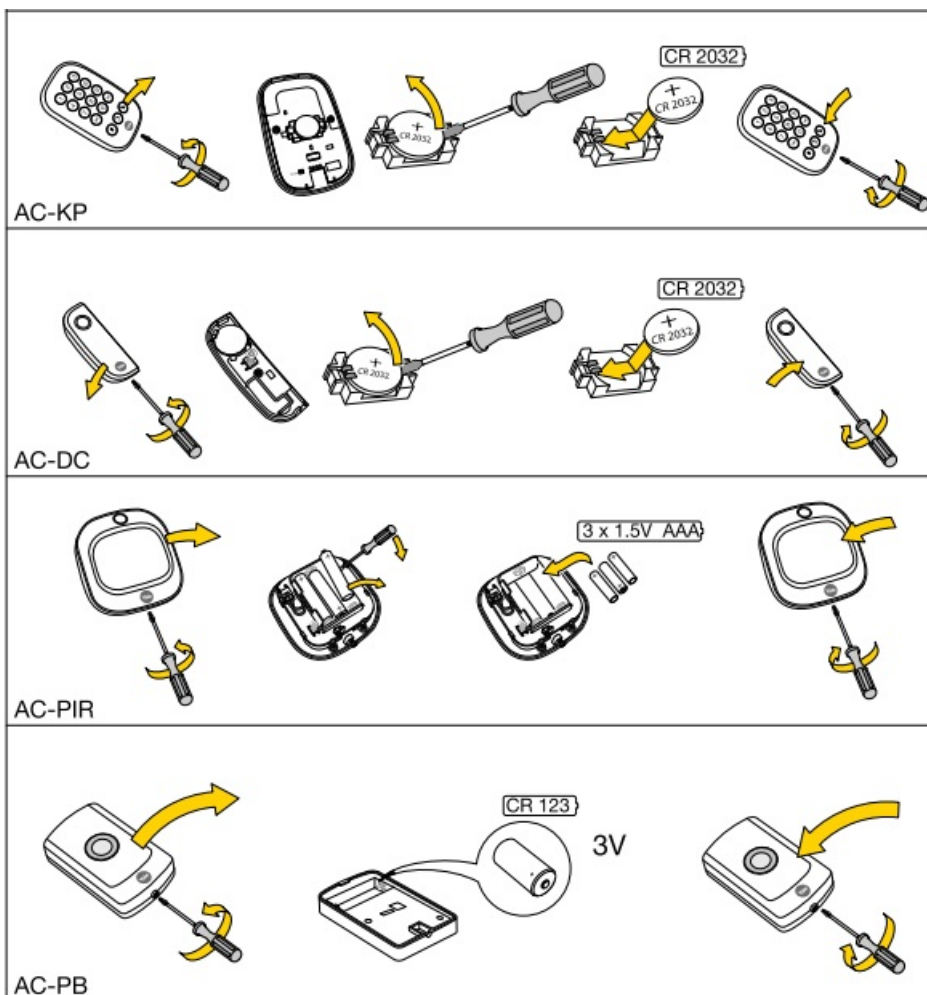


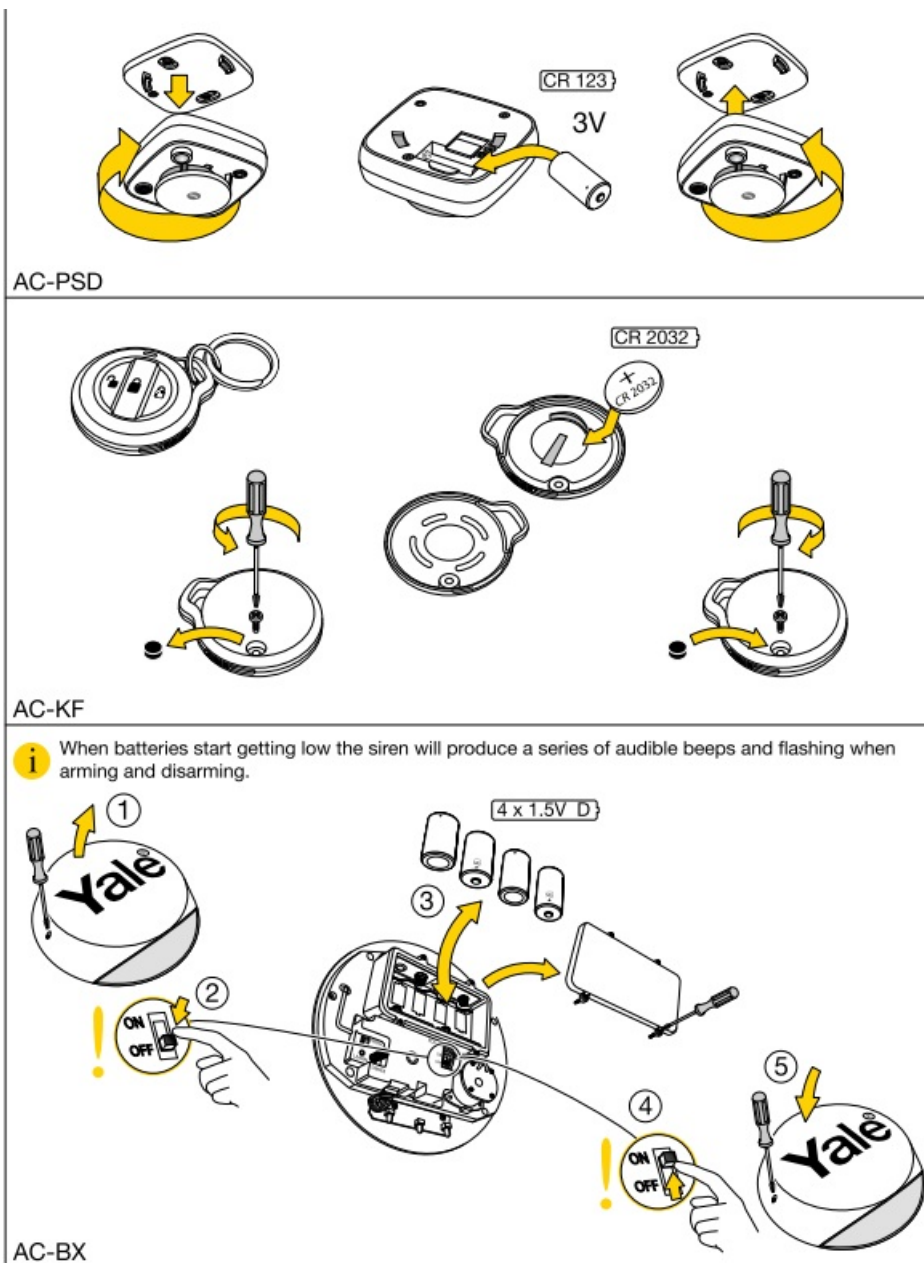
If you want to know more about your Alarm app features, check our app manual sections within the app. (select the ? at top right of the screen you need help with)

Changing batteries

The smart hub will start to emit an intermittent beep to indicate that the batteries need changing on one of your devices. The hub will continue to beep until the batteries on this device have been replaced.



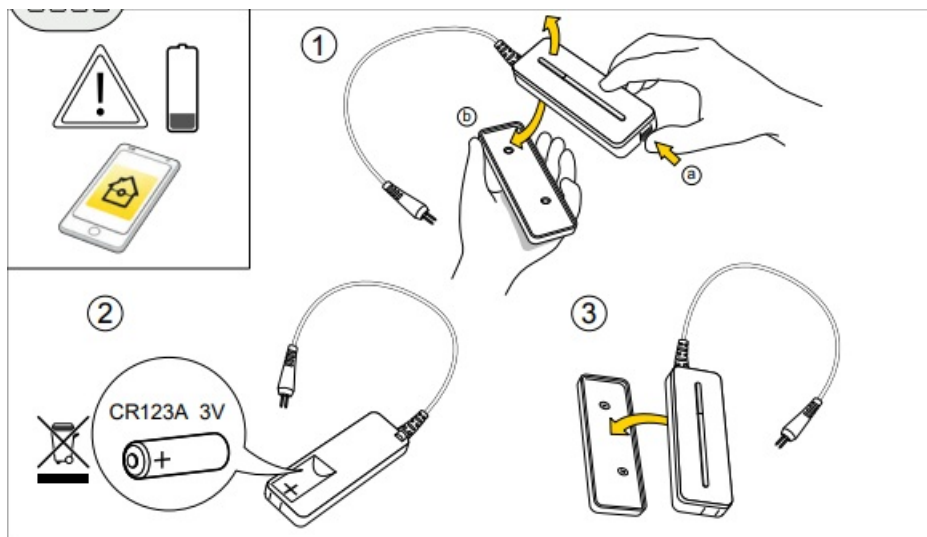




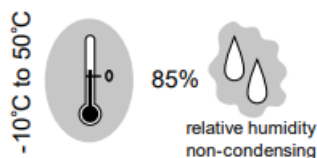
The App will display a low battery message under the relevant device when batteries are running low. Please make sure the system is disarmed before changing devices batteries.

When batteries start getting low the siren will produce a series of audible beeps and flashing when arming and disarming

Replacing batteries



Environment



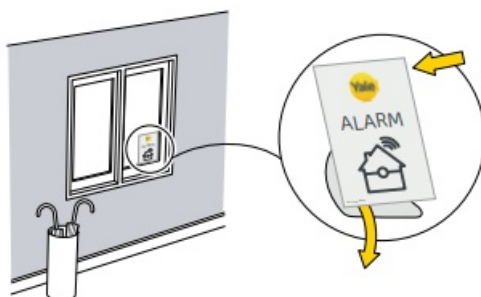
Product	Frequency / Band	EIRP [dBm]
AC-WS	868MHz	13.95±3dBm

Housings ABS/polycarbonate

Radio: 868 MHz FM

RF Transmission: 18mA

Congratulations you have completed the Yale Sync Smart Home Alarm installation.



ALARM

Hereby, ASSA ABLOY Ltd., School Street, Willenhall, West Midlands, England WV13 3PW declares that the radioequipment type within the Sync Alarm range is in compliancewith Directive 2014/53/EU. The full text of the EU declaration of conformity is available at the following internet address: www.yalehome.co.uk/declarations-of-conformity

The smart phone feature requires our central server. Yale offers no guarantee on the availability of our server. Yale cannot guarantee limitless availability of our free server. We would contact individual users via e-mail should this situation change. Alarm Notification functions must only be used with people who have consented to being contacted by the system. Information and illustrations are subject to changes within this document. Yale reserved the right to alter the specifications and product design at any time without notice.


At Yale, we know the importance of providing security products that are easy to install and use. However, should you have any questions or experience a problem with your purchase, please visit www.yalehome.co.uk/support

THE YALE BRAND, with its unparalleled global reach and range of products, reassures more people in more countries than any other consumer locking solution.

THE ASSA ABLOY GROUP is the world's leading manufacturer and supplier of locking solutions, dedicated to satisfying end-user needs for security, safety and convenience.

Security & Risk Communications, Balymay u, siusin tente, Balymount Rd Lower, UK: ASSA ABLOY Ltd., School Street, Willenhall,
West Midlands, England WV13 3PW

Documents / Resources

	<p>Yale IA-345 Sync Home Security System [pdf] Installation Guide</p> <p>IA-345, KM 735815, IA-345 Sync Home Security System, Sync Home Security System, Home Security System, Security System</p>
--	--

References

- [Yale Declarations of Conformity - Yale UK](#)
- [Yale Support | Yale Home UK](#)
- [Yale Security Installation By Trained Yale Professionals | YaleHome](#)
- [User Manual](#)