



# Yale EBOSS AERON System Zigbee Remote User Guide

[Home](#) » [Yale](#) » Yale EBOSS AERON System Zigbee Remote User Guide 

## Contents

- [1 Yale EBOSS AERON System Zigbee Remote](#)
- [2 Product Information](#)
- [3 OPERATING WINDOWS](#)
- [4 Box content](#)
- [5 Remote overview](#)
- [6 LCD SCREEN](#)
- [7 GROUP CONTROL](#)
- [8 ADDING MODE](#)
- [9 DELETING MODE](#)
- [10 PAIRING MODE](#)
- [11 FACTORY RESET](#)
- [12 WARNING LIGHTS](#)
- [13 Documents / Resources](#)
  - [13.1 References](#)



**Yale EBOSS AERON System Zigbee Remote**



## Product Information

The product is a remote-controlled window operating system that can be paired with the Yale Connect Plus Hub 2. It allows users to control their windows individually or as a group. The remote control is equipped with an LED light, LCD screen, and control buttons for various functions. The remote comes with a magnetic actuator cradle to securely hold the remote.

### Box Content:

- Remote control

### Remote Overview:

- LED Light
- LCD Screen
- Control Buttons

**Default State:**

- No window connected
- Open/Stop button
- Previous button
- Next button
- Close/Stop button

**Default State after Pairing:**

- Device Control Icons
- Group Control Icons
- Add Icon
- Delete Icon
- No Actuators in Group message

**Group Control:**

The remote control supports up to four groups for controlling multiple windows simultaneously. The number of groups cannot be customized by the user.

**Switch to Group Control:**

1. Ensure the remote is in the device control state.
2. Click the CONFIRM button.

**Open a Group of Windows:**

1. Ensure the remote is in the device control state.
2. Click the CONFIRM button.
3. Select the desired window group.

**Close a Group of Windows:**

1. Ensure the remote is in the device control state.
2. Click the CLOSE button.

**Device Control (Single Window):**

Switch to Device Control:

1. Ensure the remote is in the device control state.
2. Click the CONFIRM button.

Open a Window:

1. Ensure the remote is in the device control state.
2. Click the OPEN button.

Close a Window:

1. Ensure the remote is in the device control state.
2. Click the CLOSE button.

### **Adding Mode:**

Add a Window Actuator to a Group:

1. Ensure the remote is in the group control state.
2. Press and hold the CONFIRM button for 3 seconds.
3. The remote enters adding mode, and the actuator flashes to indicate available window actuators.
4. Use the Left or Right control buttons to find the desired window actuator to add.
5. Click the CONFIRM button to add the actuator to the selected group.

### **Deleting Mode:**

Delete a Window Actuator from a Group:

1. Ensure the remote is in the device control state.
2. Press and hold the CONFIRM button for 3 seconds.
3. The remote enters deleting mode, and the actuator flashes to show available window actuators.
4. Use the Left or Right control buttons to find the actuator you want to delete.
5. Click the CONFIRM button to delete the actuator from the group.

Pairing Mode:

To pair Aeron actuators when in pairing mode:

### **Enter Pairing Mode:**

1. Press and hold the CONFIRM and OPEN buttons for 5-10 seconds.
2. The remote enters pairing mode, indicated by a blinking green light.

Pairing Request to Actuators:

- If pairing is successful, the green light stays solid.
- If pairing fails, the red light flashes twice.

Signal Sent Successfully:

- To send a signal successfully, press and hold the CONFIRM and CLOSE buttons for 5-10 seconds.

- The green light will turn on for 1 second.

## OPERATING WINDOWS

For windows to be controlled via a remote the remote must be paired with the Yale Connect Plus Hub 2. Windows can be paired to operate as a group or individually

### Remote is used for the following functions



- Window control
- Pairing Aeron window actuators
- Pairing Connect Plus Hub 2
- Creating window Groups
- Deleting windows or Groups

### Group pairing

- A maximum of 4 Groups can be controlled via the remote. Note: no more than 30 actuators can be assigned across all 4 groups.
- Group 1 by default are all the actuators. This group cannot be edited. Only groups 2-4 can be edited.



## Individual window pairing

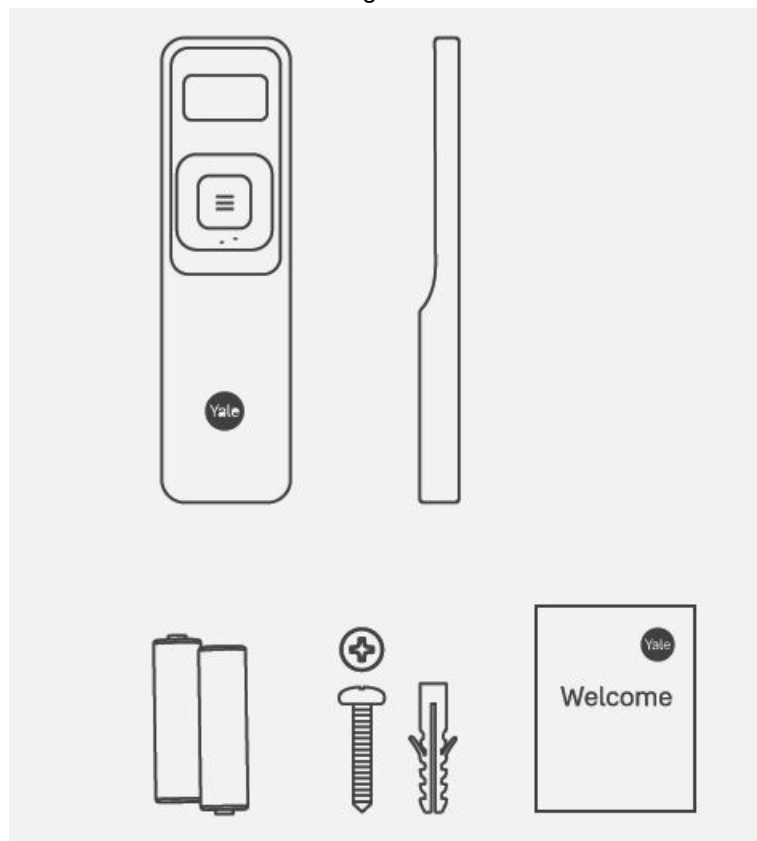
A maximum of 30 individual windows and can be controlled via the remote



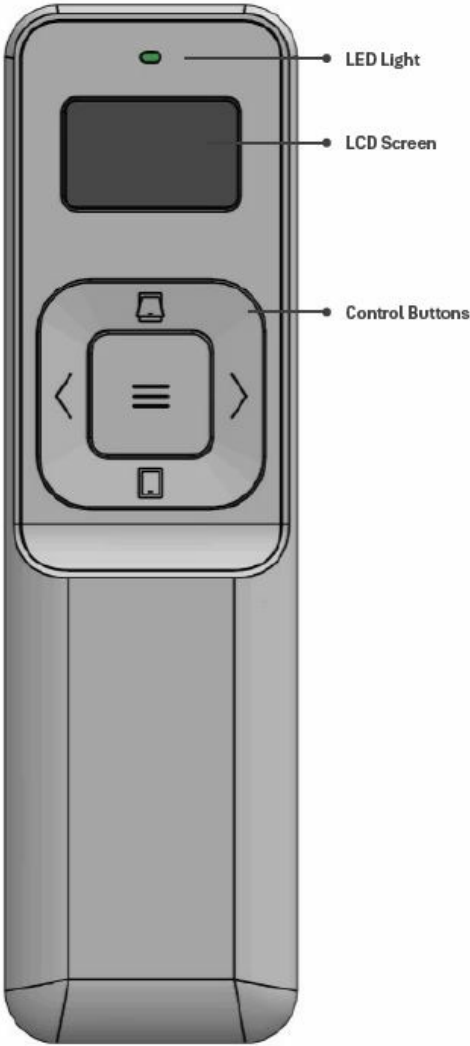
## Box content

- Remote x 1
- Cradle x 1
- AA Batteries x 2
- Screws x 2 and actuator plugs x 2
- Quick starter guide x 1

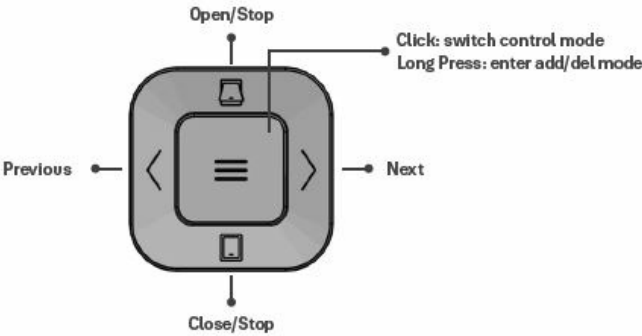
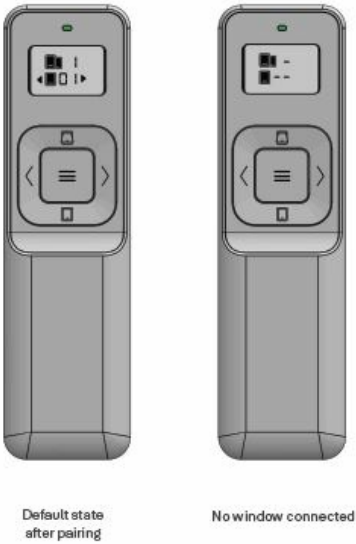
**Note:** Remote is held into the actuator/cradle with magnets.



Remote overview



Default state:



## LCD SCREEN



All Icons



Device Control



Group Control



Add



Delete

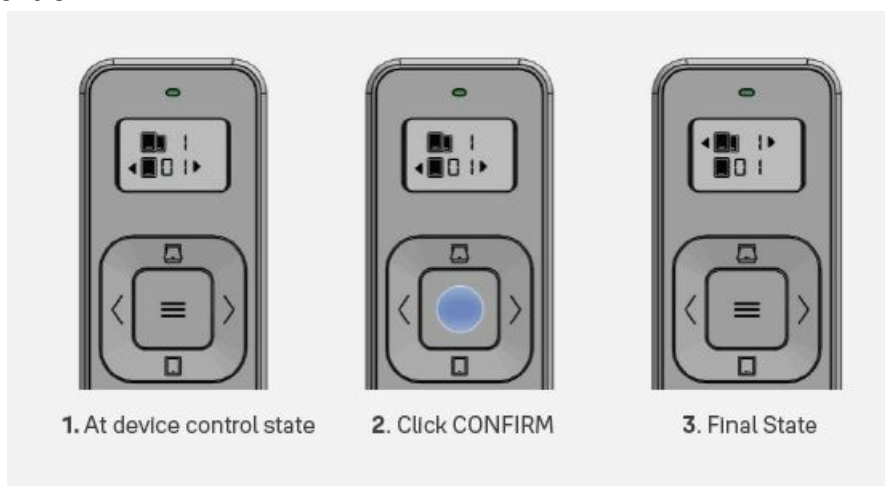


No Actuators  
in Group

## GROUP CONTROL

**Note:** the remote has maximum four groups. User cannot customise # of groups.

### Switch to group control

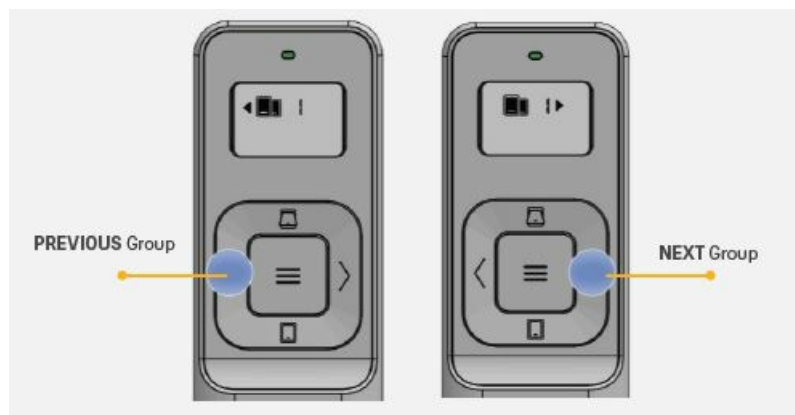


### Open a group of windows

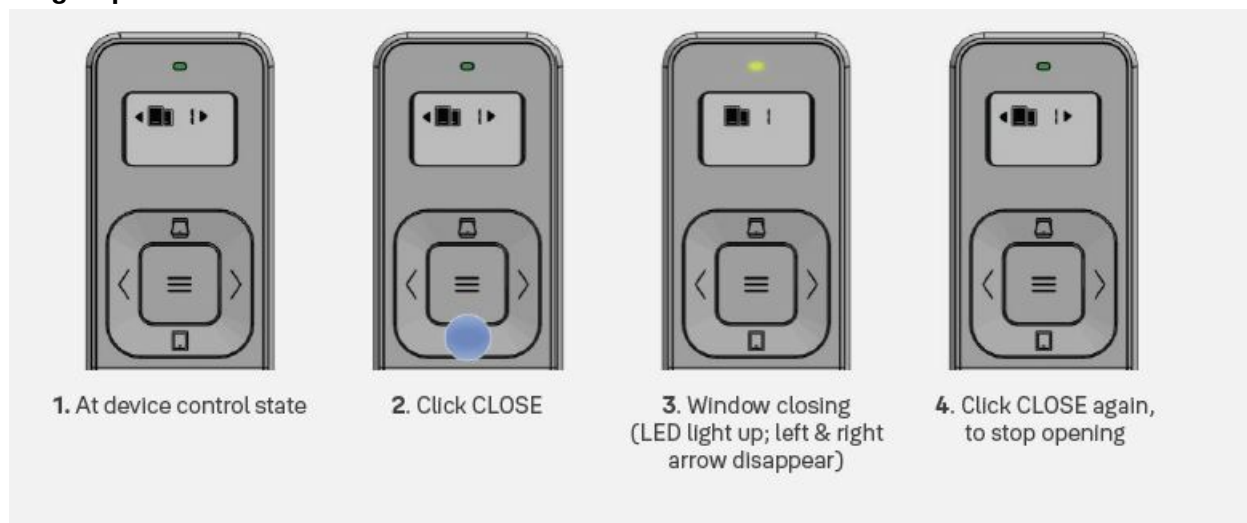




### Select window group

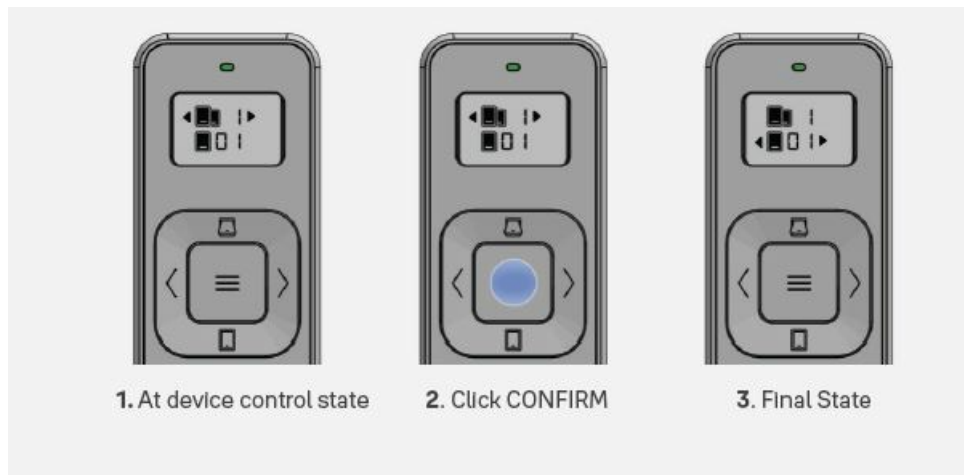


### Close a group of windows

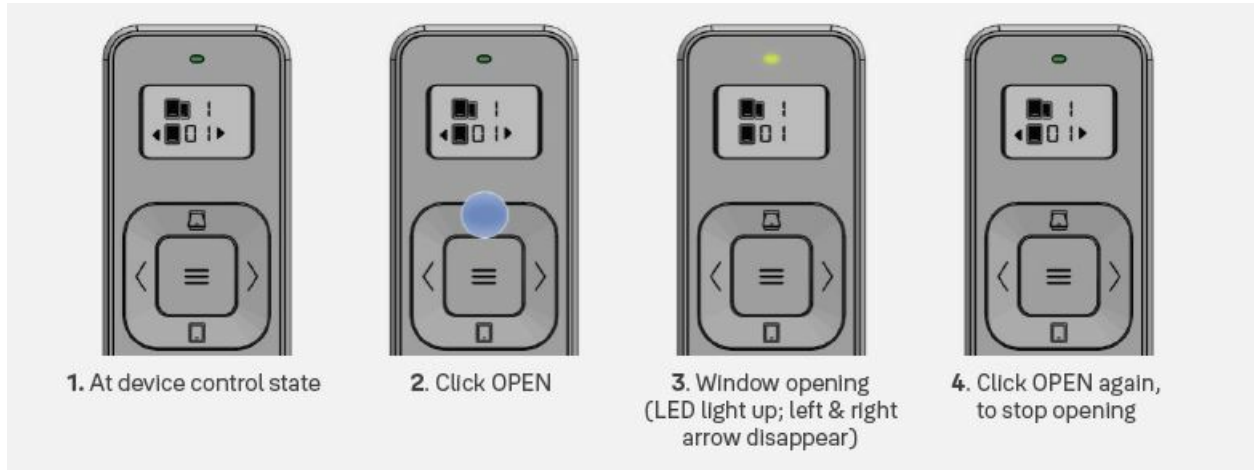


### DEVICE CONTROL (SINGLE WINDOW)

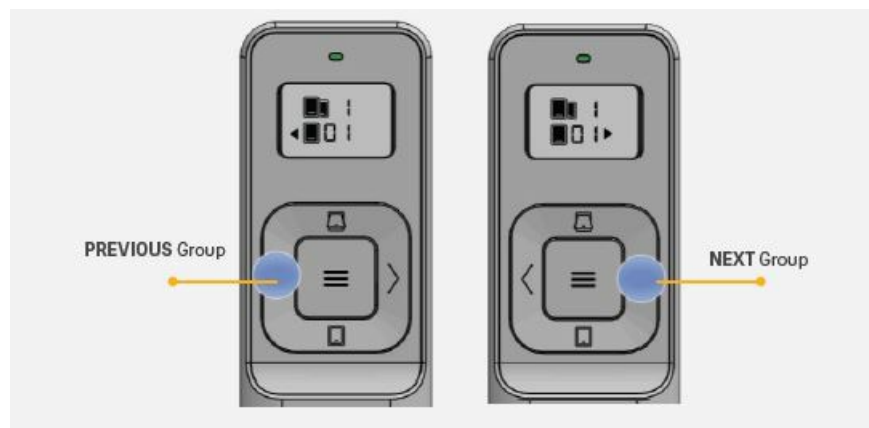
1. Switch to device control



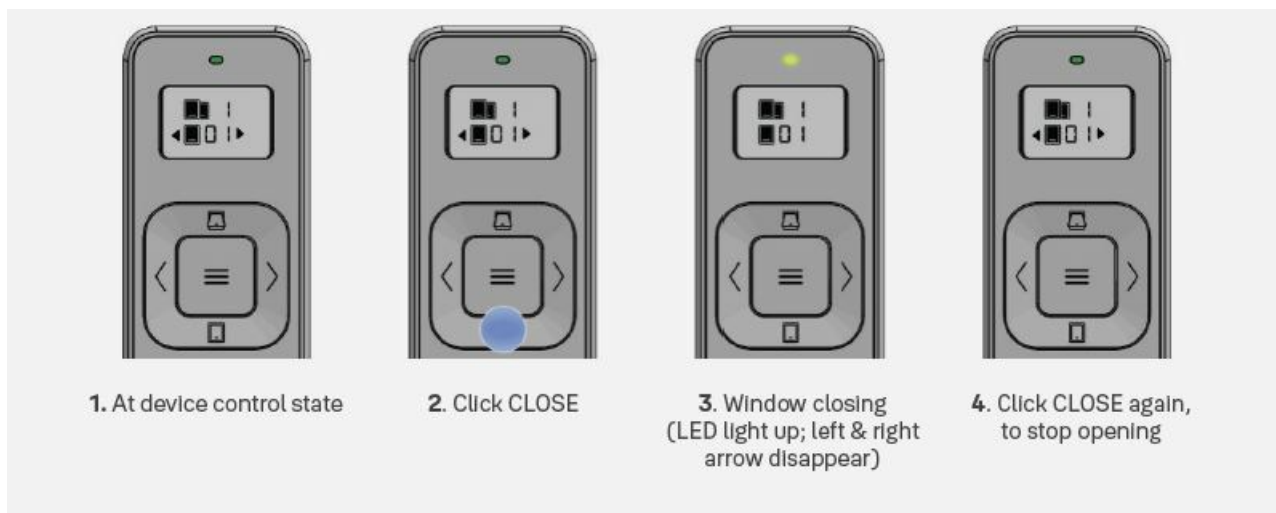
## 2. Open a window



## 3. Select window group



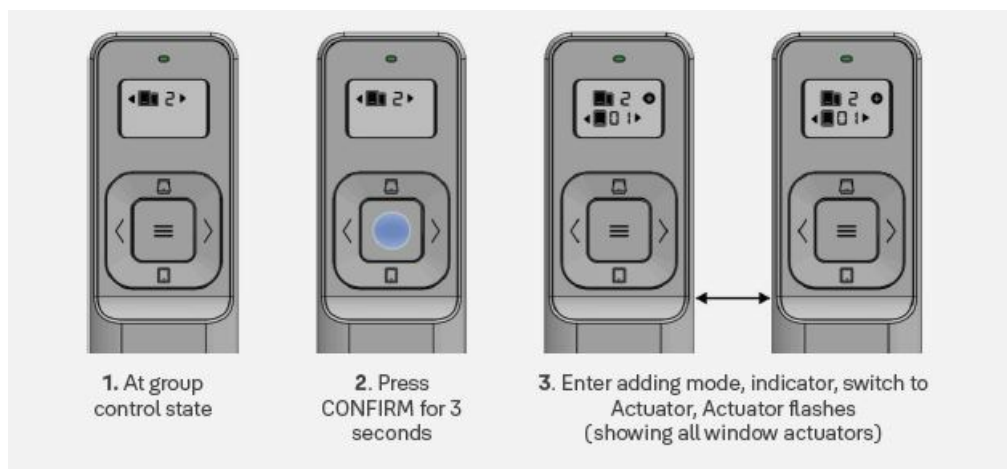
## 4. Close a window



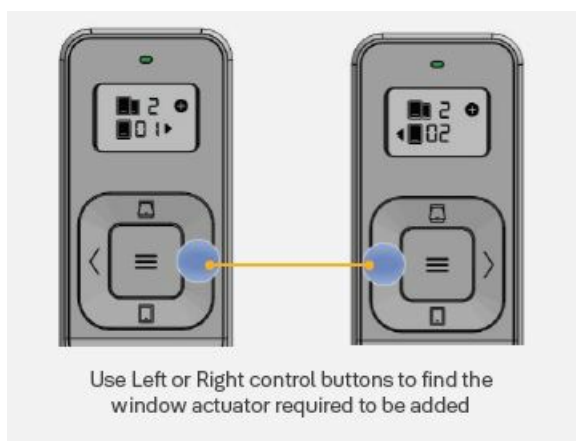
## ADDING MODE

Add a window actuator to a group

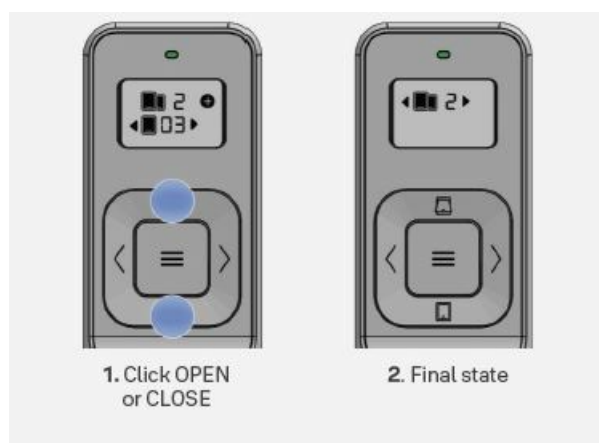
- Enter adding mode



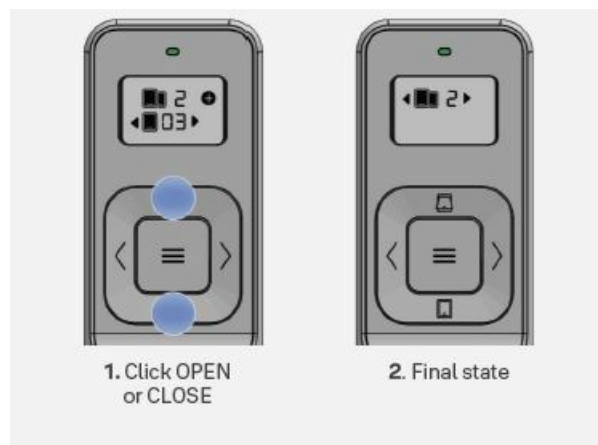
- Find the Actuator to add



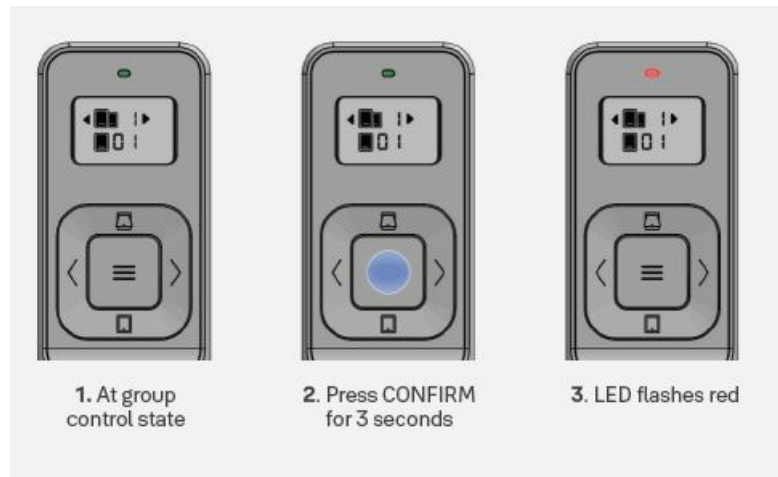
- CONFIRM



- Exiting adding mode



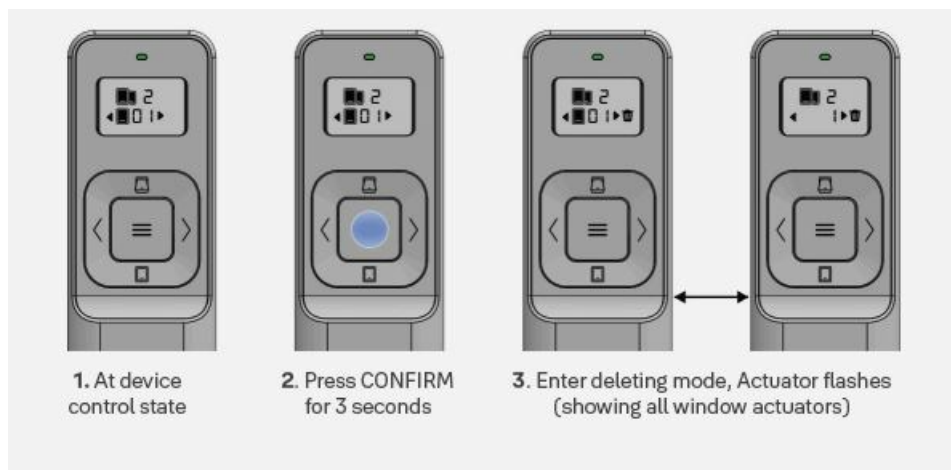
- Add to group (group 1)



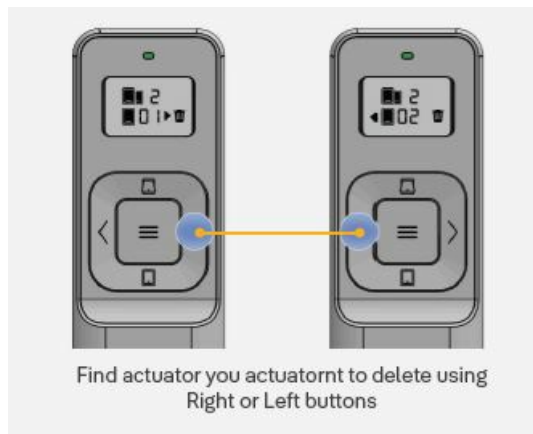
## DELETING MODE

Delete a window actuator from a group

- Enter deleting mode



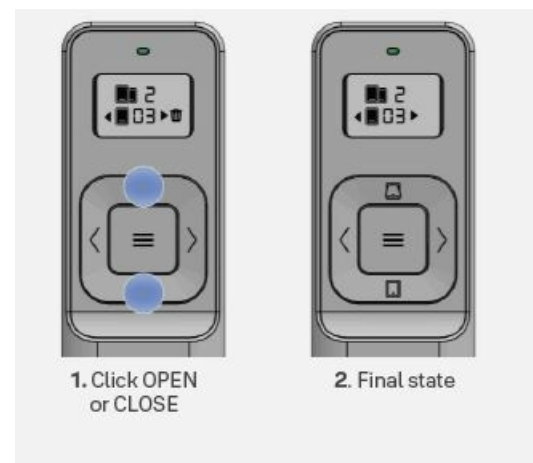
- Find the Actuator to add



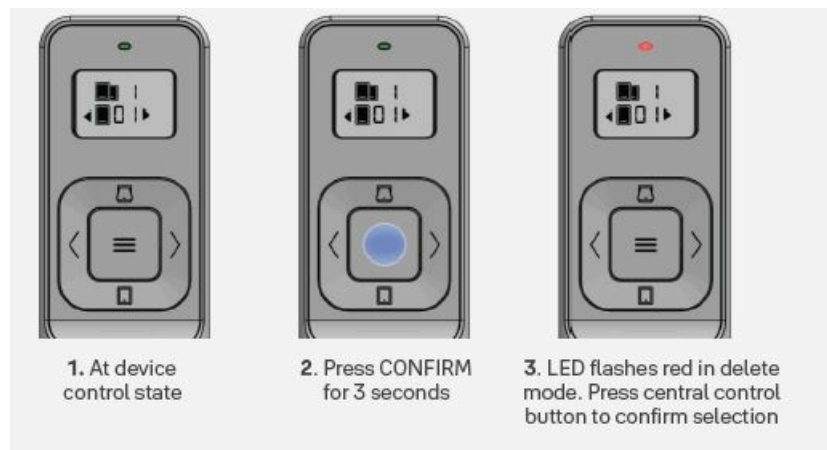
- CONFIRM



- Quit deleting mode



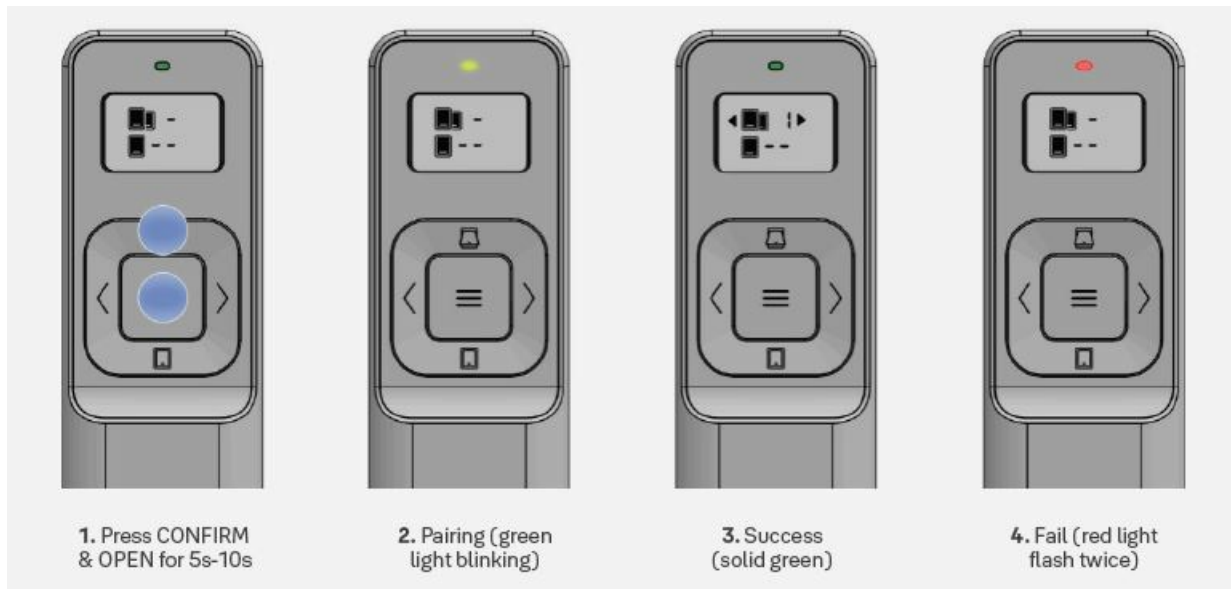
- Add to group (group 1)



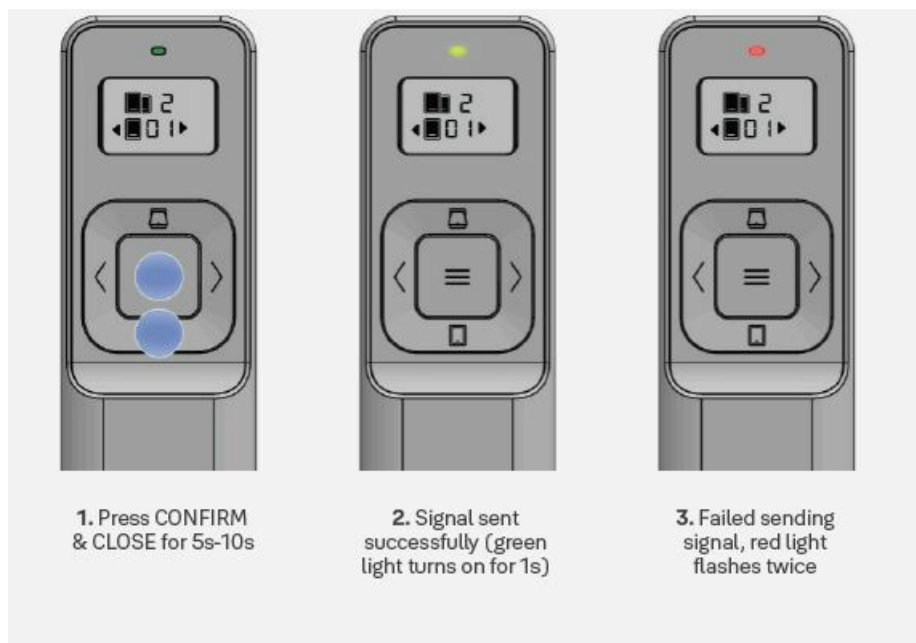
## PAIRING MODE

How to pair Aeron actuators when in pairing mode

- Enter pairing mode



- Pairing request to Actuators

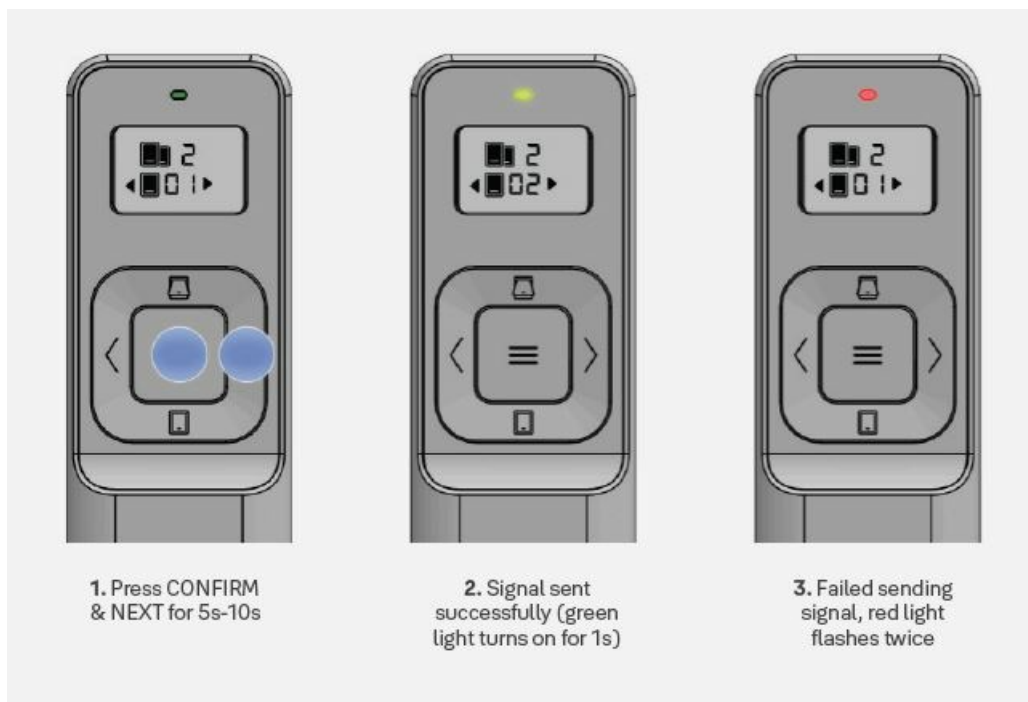


**Note:** It is only necessary to go through the above pairing steps if the unit has been powered on longer than 5 minutes

## FACTORY RESET

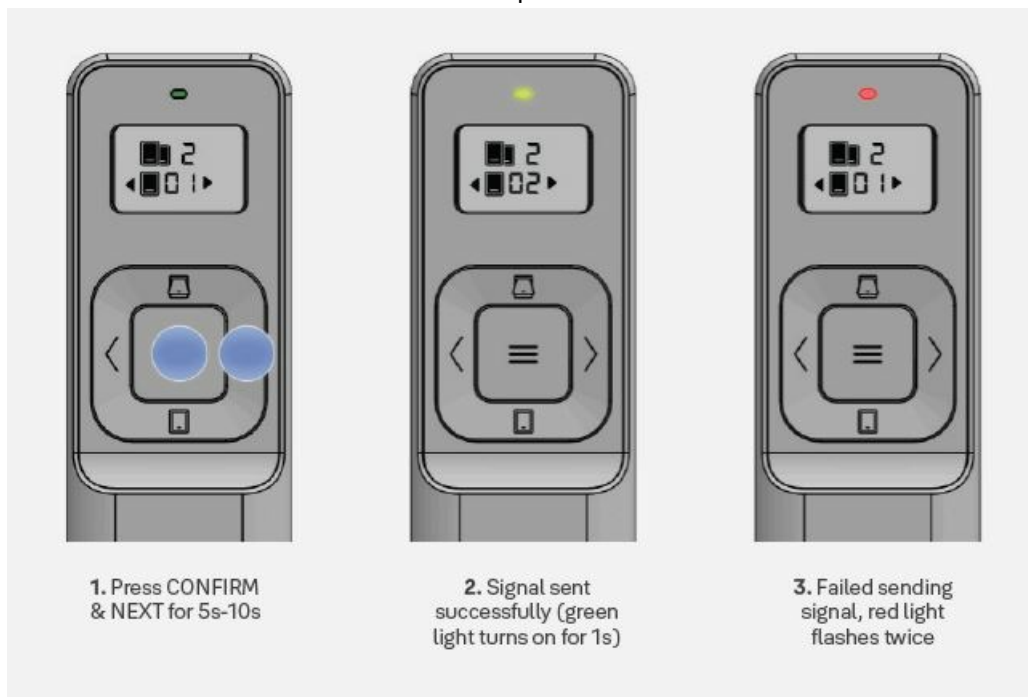
### Single Actuator reset

If required, a single actuator can be factory reset when it is not performing correctly. Ensure the actuator that is to be reset is selected then follow the steps below.



### Group Actuators reset

If required actuators in a Group can be factory reset when the actuators are not performing correctly. Ensure the actuator that is to be reset is selected then follow the steps below.



**Note:** Single actuator reset can also be performed via the setting in the app

### ENGINEERING MODE

This mode is used when the actuators are first being setup and there is no Wi-Fi connection available.

- Installer/electrician can press open/close to check the window performance. Engineering Mode once active will stay on until power is removed from the remote.

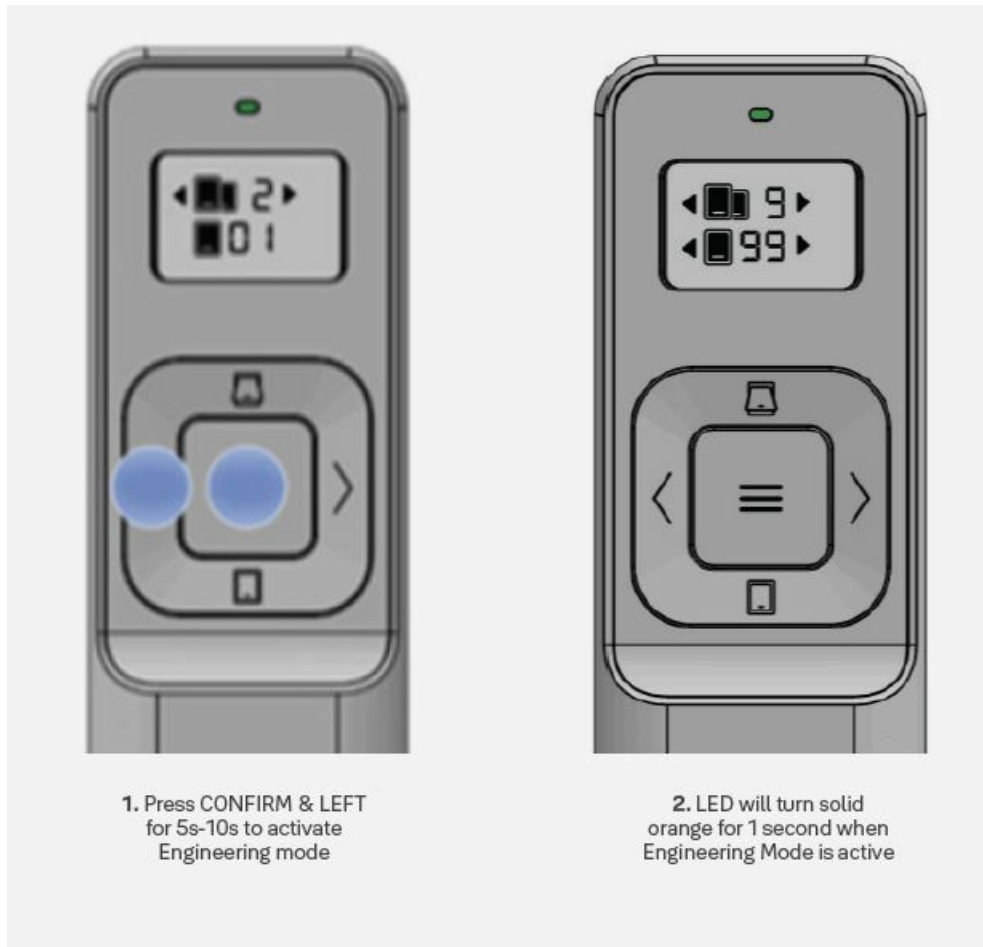
**Note:** When actuators are connected to power they will enter default mode. If a remote is placed into Engineering Mode, the powered actuators in range of the remote will also enter Engineering Mode.

Engineering Mode will stay on until power is removed from the remote or actuator. An actuator must have a



module fitted to enter Engineering Mode.

- If the Engineering Mode is not initiated the user can link the module to the app within 5 minutes from the actuator being powered. After 5 minutes the user will have to repower the actuator to connect the app.
- Once the remote has been setup + connected to the app, Engineering Mode is disabled and cannot be entered again. Even if the devices have been factory reset.



## WARNING LIGHTS

- **Low Battery Alert**

When the battery level is below 20% the LED flashes Red slowly every 2 seconds.

- **Sleep Mode**

If the remote control does not operate for 10 seconds, the device will enter sleep mode.

- **OTA (Over The Air Update)**

The OTA is a wireless update used to ensure the latest actuator software updates are installed for the Aeron to operate correctly. During the OTA process the LED will flash Green. When an OTA update is successful, the remote LED will illuminate Green for 3 seconds.

If the OTA update fails the LED will illuminate Red for 3 seconds.

- **Factory Reset Remote**

If the remote has paired to the app, you must first reset the remote on the app. On the back of the remote, under the battery cover is a reset button. Push a paperclip into the reset hole and press for 5 seconds. Ensure the batteries are still installed in the remote. The LED light on the front of the remote will flash Green when the remote has been reset. Restarting the remote will automatically place it into pairing mode.

## GLOSSARY



- **Group**

Group is a group of windows assigned to a particular area “Group”.

- **Hub**

The hub connects to your Aeron actuator module via Zigbee. The hub also connects to your Wi-Fi router and Yale server, which gives you the ability to control your actuators from the app remotely

Yale is trusted by millions of people every day to keep what’s important to them safe.

- Our innovations have protected their homes, families and belongings for over 180 years. We have expanded from being a leader in mechanical lock engineering to innovating connected smart locks and homes. Because we alactuators make every effort to push the boundaries in a changing world.
- We were there for your grandparents (and probably theirs) and we’ll be there for your children.
- ASSA ABLOY is the global leader in door opening solutions, dedicated to satisfying end-user needs for security, safety and convenience.

ASSA ABLOY New Zealand Limited 6 Armstrong Road, Albany Auckland 0632, New Zealand

[www.yalehome.com/nz](http://www.yalehome.com/nz)

For customer feedback: [nzsales@assaabloy.com](mailto:nzsales@assaabloy.com)

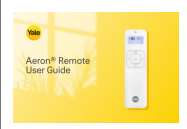
ASSA ABLOY Australia Pty Ltd 235 Huntingdale Road, Oakleigh, Victoria, 3166

[www.yalehome.com/au](http://www.yalehome.com/au)



For customer feedback:

[customerservice.au@assaabloy.com](mailto:customerservice.au@assaabloy.com)

## Documents / Resources

	<p><a href="#">Yale EBOSS AERON System Zigbee Remote</a> [pdf] User Guide EBOSS AERON System Zigbee Remote, EBOSS, AERON System Zigbee Remote, System Zigbee Remote, Zigbee Remote</p>
---	--

## References

-  [Smart Locks, Digital Locks, Digital Safes, Padlocks, Home Automation | Yale](#)
-  [Welcome to Yale - Trusted every day. | Yale](#)