

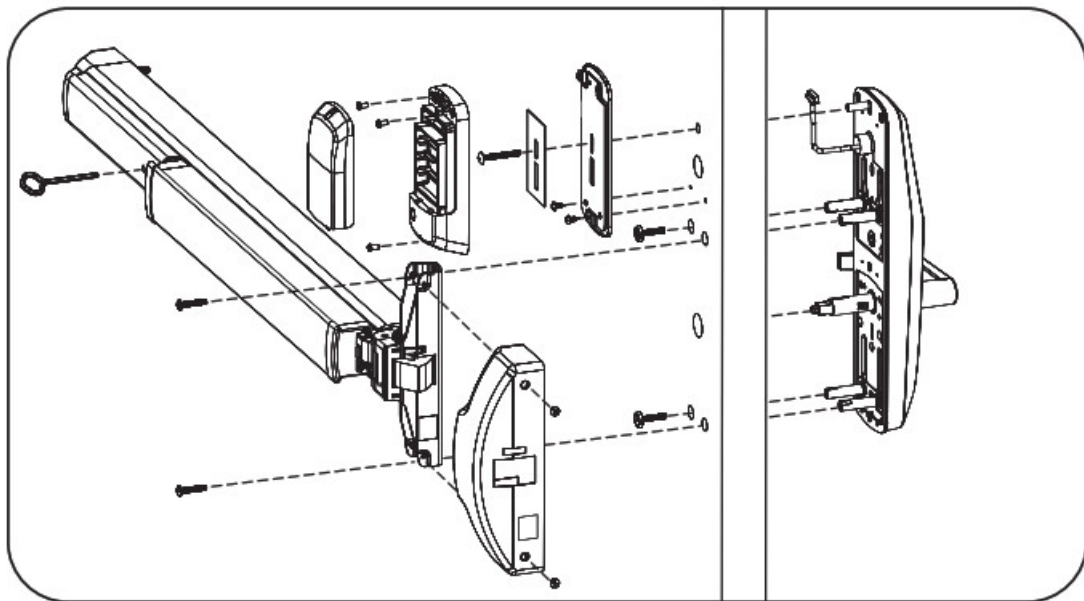
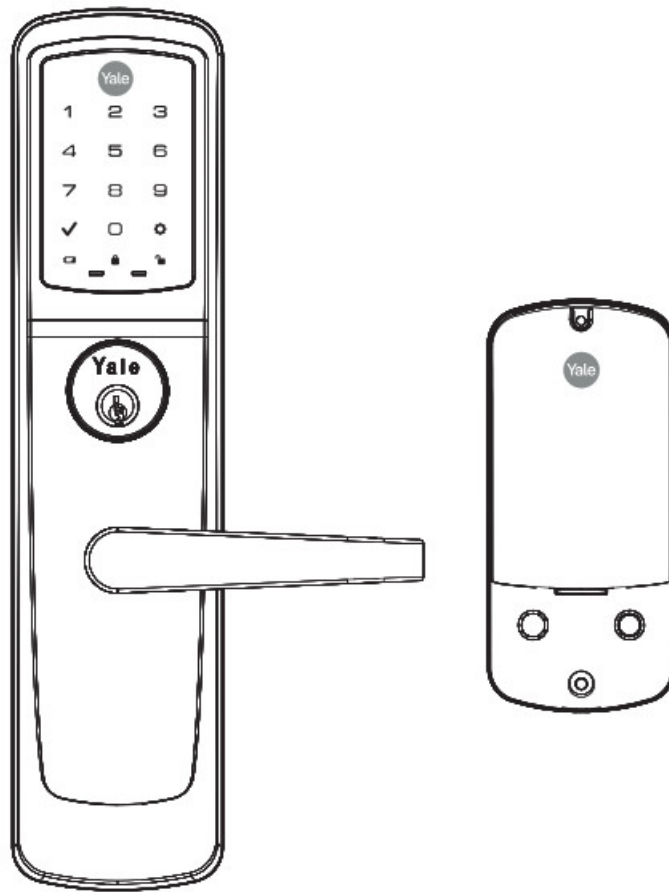


Yale AU-NTT620-ACC nexTouch Keypad Access Exit Trim Lock Installation Guide

[Home](#) » [Yale](#) » Yale AU-NTT620-ACC nexTouch Keypad Access Exit Trim Lock Installation Guide 



**nexTouch™ Keypad Access Exit Trim Lock
Touchscreen and Push Button
Installation and Programming Instructions**



WARNING

This product can expose you to lead which is known to the state of California to cause cancer birth defects or other reproductive harm. For more information go to www.P65warnings.ca.gov.

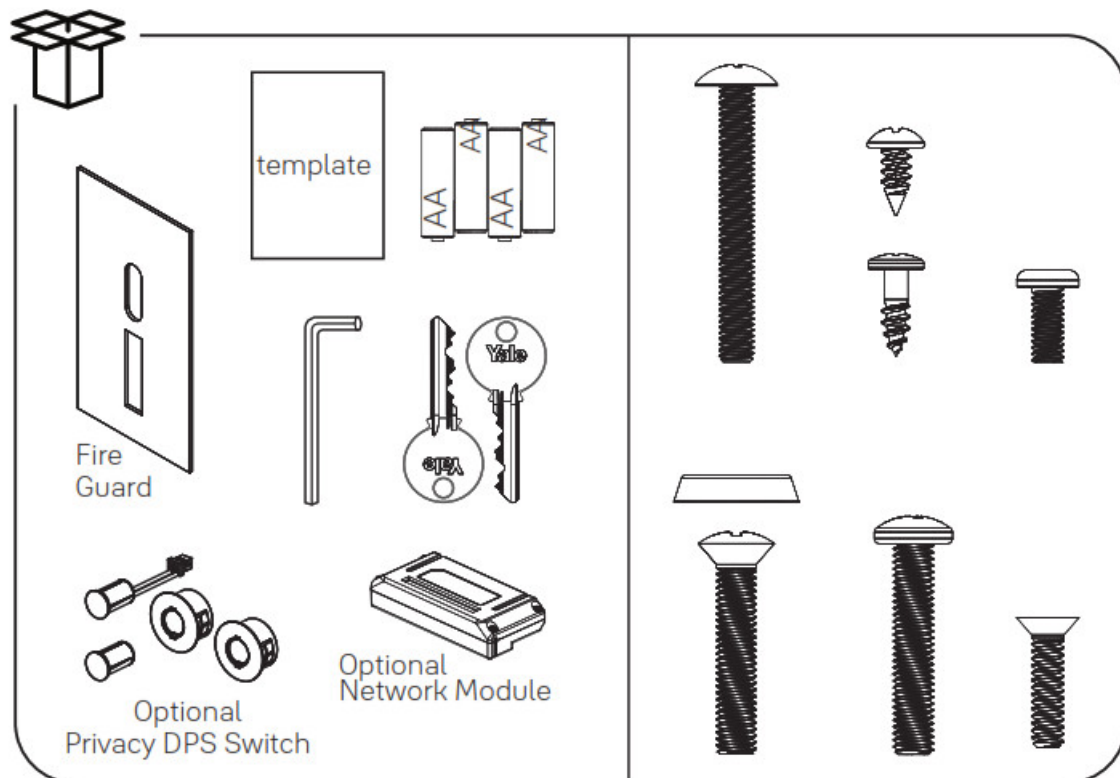
Retrofitting or modifying this product may impact fire rating, safety features and warranty. Consult with code specifications to ensure compliance with all codes and ratings.

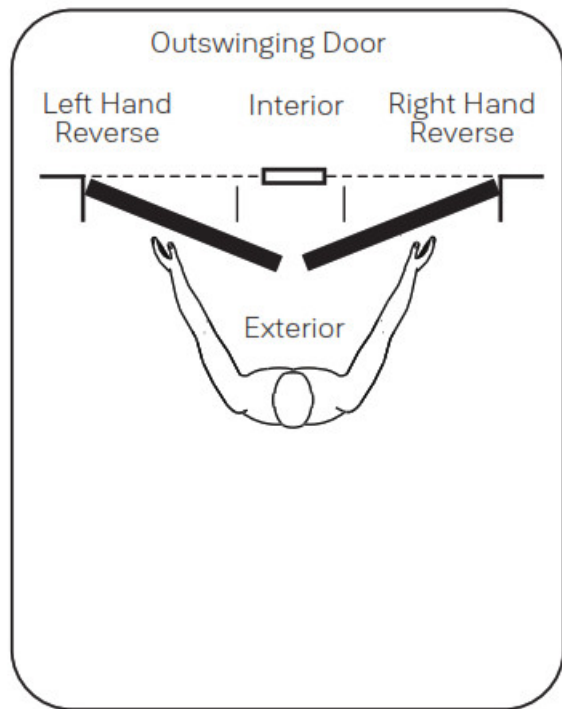
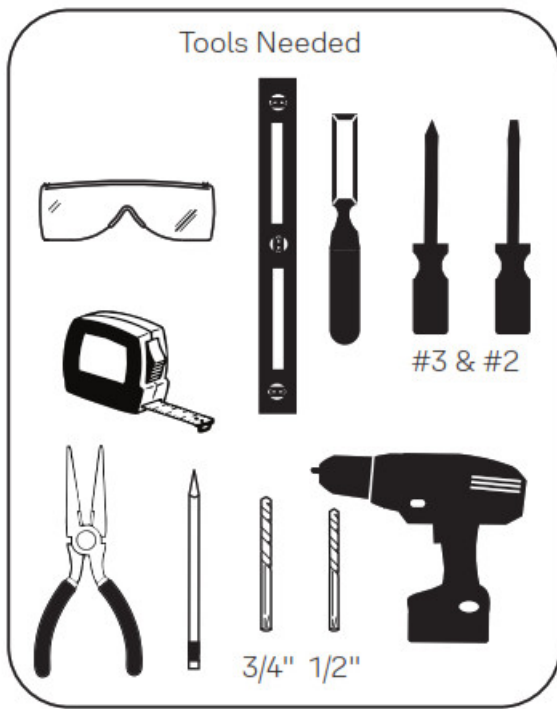
Contents

- 1 Before You Begin
- 2 Door Position Switch Option
- 3 Prepare Door
- 4 Install Cylinder
- 5 Change Hand of Trim (if necessary)
- 6 Install Outside Trim Assembly
- 7 Install Exit Device
- 8 Install Strike and Optional DPS
- 9 Install Inside Mounting Plate
- 10 Attach Cables to Inside Lock
- 11 Install Inside Lock
- 12 Documents / Resources
- 13 Related Posts



Before You Begin



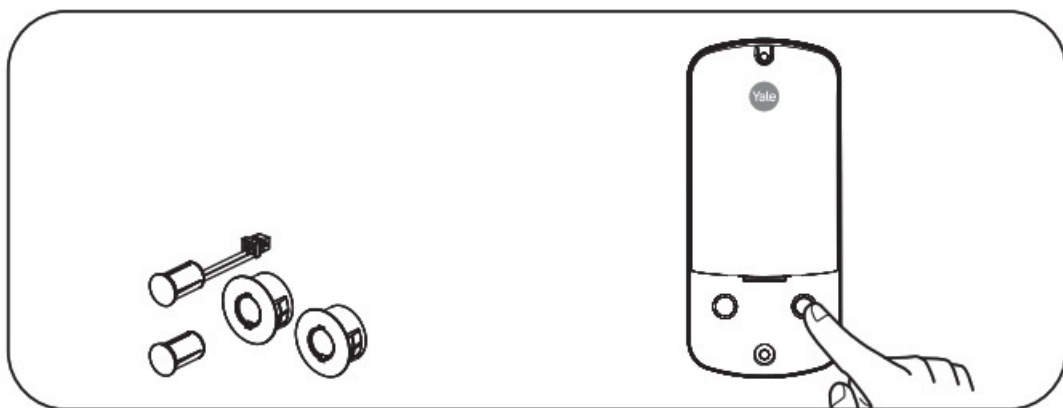


Face a door swinging open toward you. If it swings open to the right, it is a right-hand reverse door. If it swings open to the left, it is a left-hand reverse door.

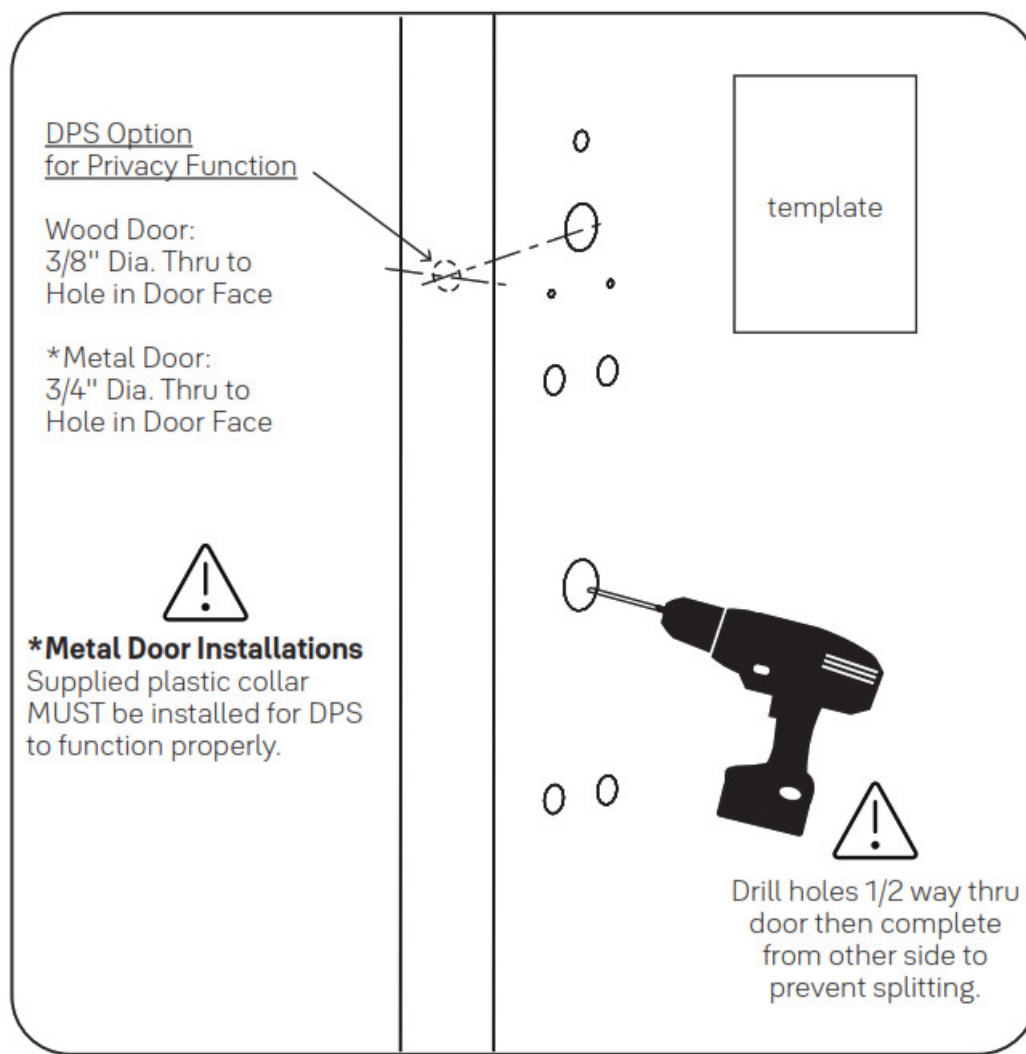
O optional Door Position Switch Option

Privacy DPS Switch

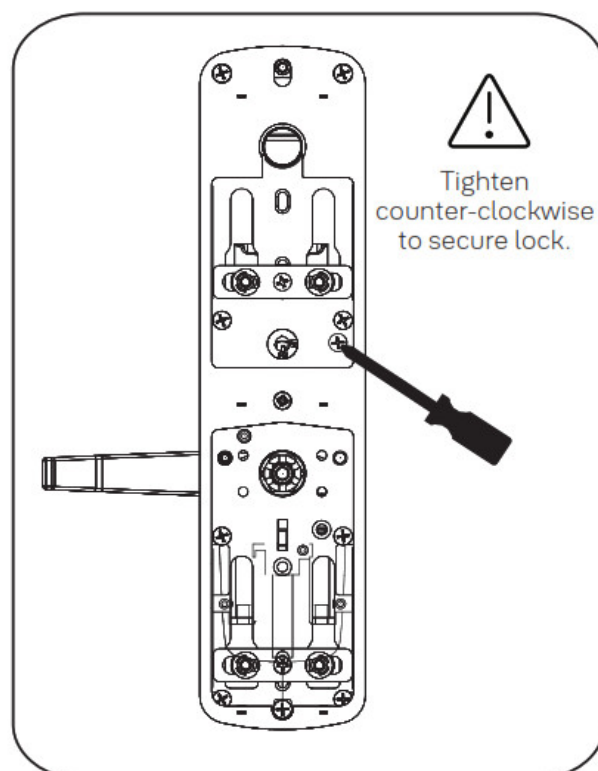
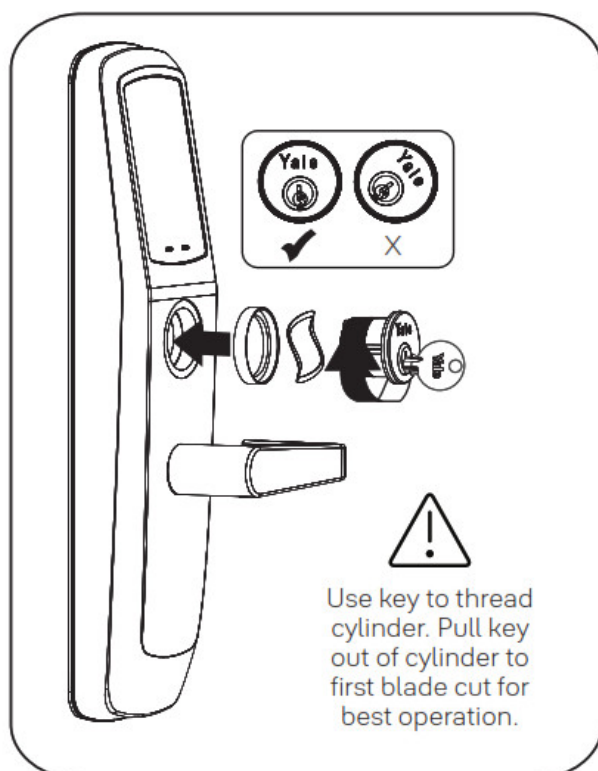
With Door Position Switch installed and the door closed, all keypad functions can be disabled by Privacy Button.



Prepare Door



Install Cylinder

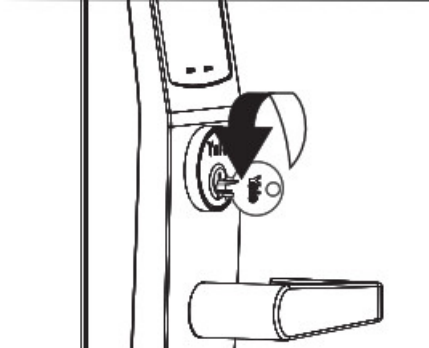




If using a cylinder other than 1-1/8", a new collar must be used that is sized appropriately for cylinder length.



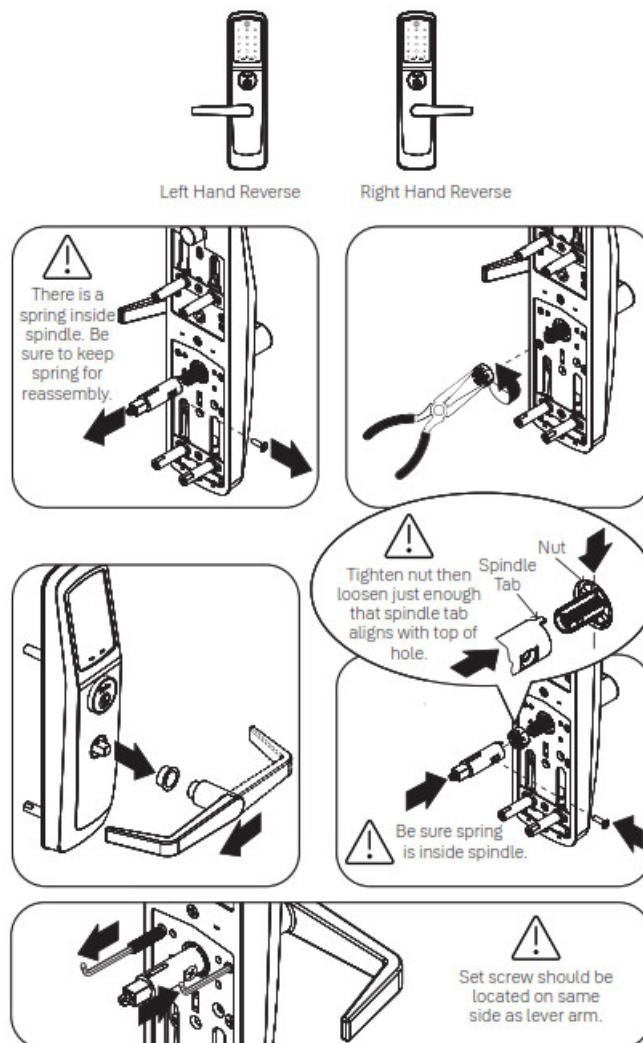
Test Cylinder



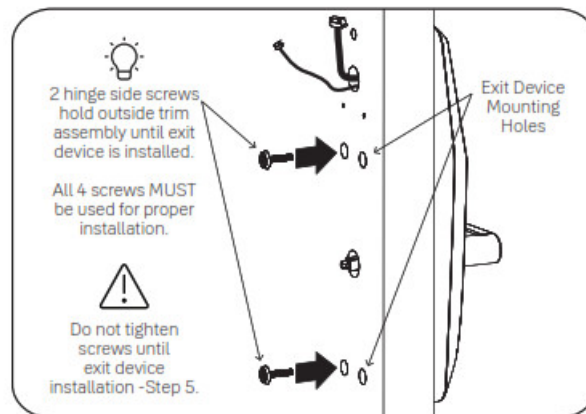
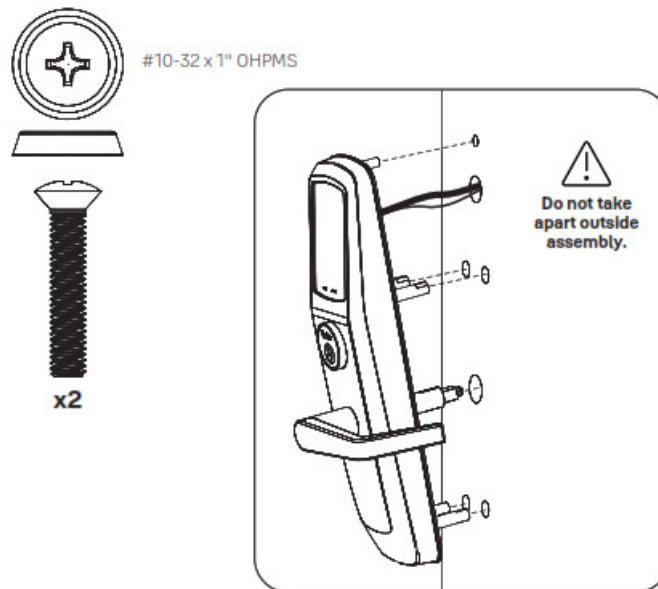
Test cylinder by turning key counter-clockwise to unlock trim.

If there is any binding then the cylinder is not at the correct depth and needs to be threaded further into escutcheon.

Change Hand of Trim (if necessary)



Install Outside Trim Assembly



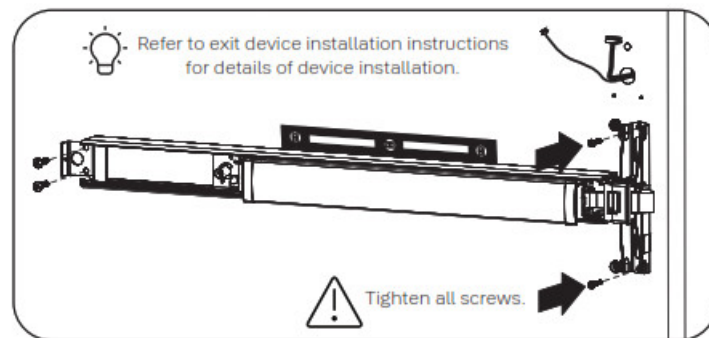
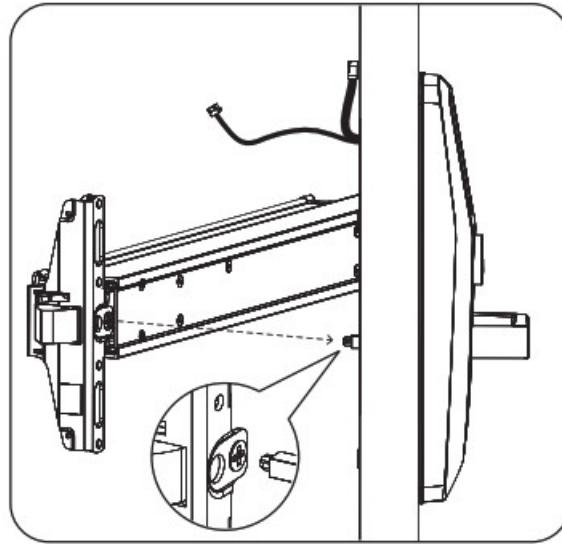
Install Exit Device



#10-32 x 1" PHMS



x2



Test Mechanical Lock Function by Key, Lever, and Keypad

Install Strike and Optional DPS



#10-24 PFHMS



x3

DPS Option
for Privacy Function

*Metal Frame:
3/4" Dia. x 1"

See Instructions with DPS Kit



*Supplied plastic collar **MUST**
be installed for DPS to
function properly.



Frame

3-1/2"

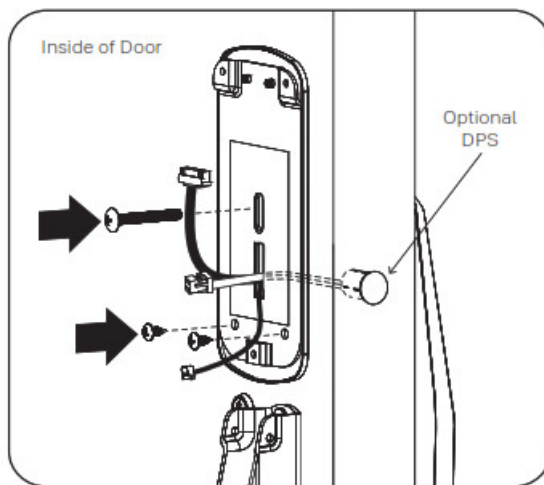
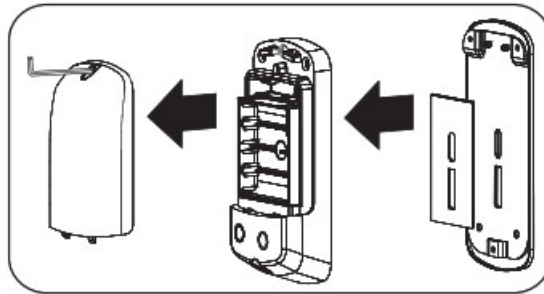
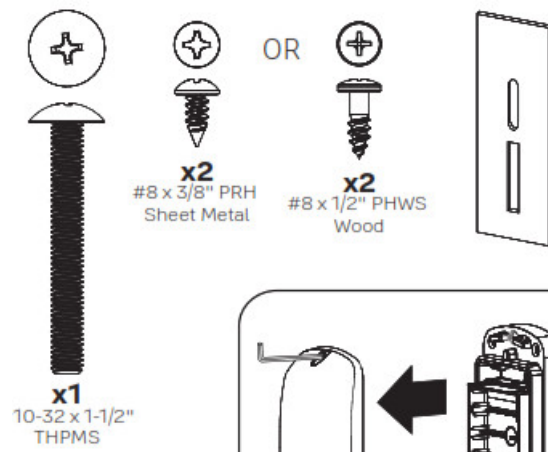


Strike must be centered with exit device bolt. For
proper engagement, door should remain latched
and not rattle when pushed, pulled or shaken in/out.

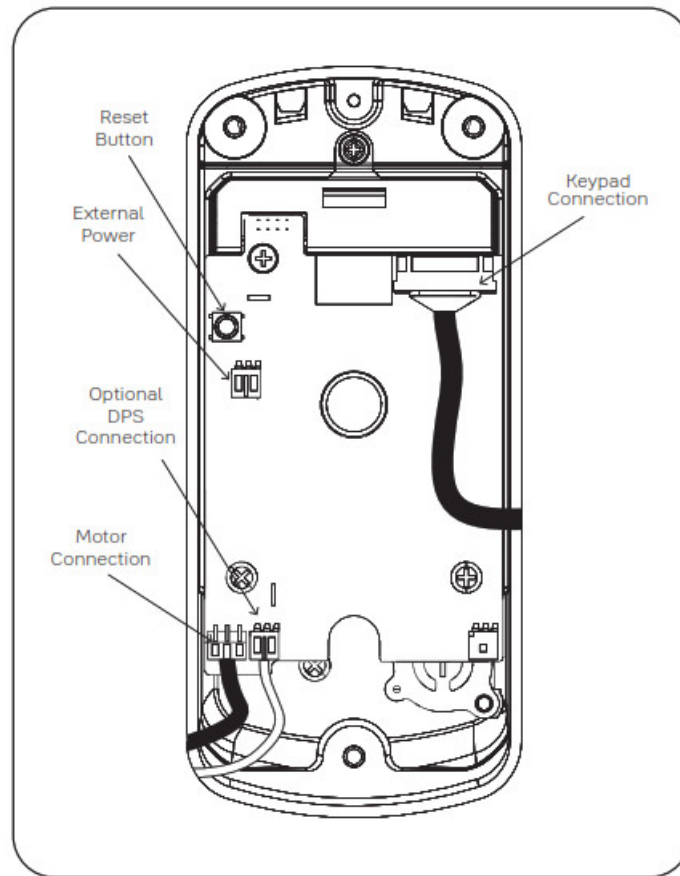


Refer to exit device installation instructions
for details of strike installation.

Install Inside Mounting Plate



Attach Cables to Inside Lock



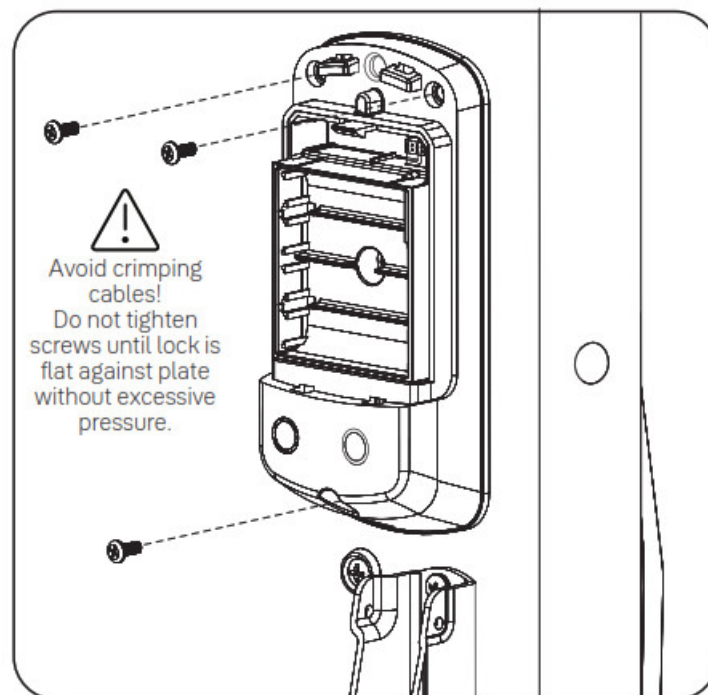
Install Inside Lock



#8-32 x 5/16" PHMS

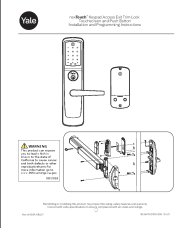


x3



Part of ASSA ABLOY

Documents / Resources

	<p>Yale AU-NTT620-ACC nexTouch Keypad Access Exit Trim Lock [pdf] Installation Guide NTT600PBACC, 2ABFG-NTT600PBACC, 2ABFGNTT600PBACC, NTT600PBACC Deadbolt Smart Door Keypad, Deadbolt Smart Door Keypad, Door Keypad, AU-NTT620-ACC nexTouch Keypad Access Exit Trim Lock, Keypad Access Exit Trim Lock, Exit Trim Lock, AU-NTT620-ACC</p>
---	--

[Manuals+](#)