



YAESU SCU-LAN10 Network Remote Control System User Manual

[Home](#) » [YAESU](#) » YAESU SCU-LAN10 Network Remote Control System User Manual 

Contents

- [1 YAESU SCU-LAN10 Network Remote Control System](#)
- [2 Product Information](#)
- [3 Product Usage Instructions](#)
- [4 IMPORTANT](#)
- [5 REGARDING THIS FIRMWARE](#)
- [6 PREPARING FOR FIRMWARE UPDATE](#)
- [7 Downloading the Firmware](#)
- [8 HOW TO UPDATE FIRMWARE](#)
- [9 Documents / Resources](#)
 - [9.1 References](#)



YAESU SCU-LAN10 Network Remote Control System



Product Information

The SCU-LAN10 is a Network Remote Control System firmware provided by YAESU MUSEN CO., LTD. It is designed to be used with the SCU-LAN10 unit, allowing users to remotely control their transceiver through a

computer. Please read the Important Notes before downloading and using the firmware.

Specifications

- Firmware Model: SCU-LAN10
- Firmware Version: Vxxxx
- Manufacturer: YAESU MUSEN CO., LTD.

Product Usage Instructions

How to Confirm the Firmware Version

In order to check the current firmware version of your SCU-LAN10, follow these steps:

Check on the SCU-LAN10 remote control software screen:

1. Click **[Help]** at the top left of the screen.
2. Click **[About]**.
3. The current version will be displayed at the bottom right of the pop-up screen.
4. Click **[OK]** when finished confirming.

Check on the screen of the setting software SCU-LAN10 Setting Tool:

1. Click the Windows start button and click the **[SCU-LAN10 Setting Tool]** icon in the Yaesu Musen group to start the setting software.
2. The login screen will be displayed. Enter your password and click **[Login]**.
3. The current version will be displayed at the top left of the screen.
4. Click **[Close]** when finished confirming.

Preparing for Firmware Update

Before updating the firmware, make sure you have the firmware file (SCU-LAN10_LAN_Vxxxx.SFL) available. This file is located in the SCU-LAN10_Firmware_update_xxxxxx folder that is generated during the extraction process.

How to Update the Firmware

1. Click the Windows start button and click the **[SCU-LAN10 Setting Tool]** icon in the Yaesu Musen group to start the setting software.
2. The login screen will be displayed. Enter your password and click **[Login]**.
3. The configuration software screen will be displayed, so click **[F/W Update]**.
4. Click **[File]**.
5. Select the firmware file (SCU-LAN10_LAN_Vxxxx.SFL) that you downloaded and unzipped in advance, then click **[Open]**.
6. Click **[UPDATE]** to update the firmware.
7. The update progress indicator will be displayed. During the update, the POWER LED on the SCU-LAN10 unit will blink in green, and the STATUS LED will blink in red. Please wait until the process has been completed.
8. When the update is complete, a login screen will be displayed, so click **[Login]**.

9. The configuration software screen will be displayed, so check the firmware version.
10. Click **[Close]** when finished confirming. This completes the firmware upgrading process.

FAQ

- Q: Who is responsible for any damages or losses incurred as a result of using this firmware?
A: All responsibility lies with the customer. The manufacturer cannot be held responsible for any damages or losses incurred by the customer.
- Q: Can I redistribute, transfer, or resell the downloaded firmware files?
A: No, redistribution, transfer, and resale of downloaded files are prohibited.
- Q: Can I revise or modify the firmware?
A: No, revision and modification of the firmware are prohibited.
- Q: What should I do if I am unable to perform the firmware upgrade?
A: If you cannot perform the firmware upgrade yourself, please consult with one of our sales sites or service centers.

IMPORTANT

- This firmware is provided for the Network Remote Control System SCU-LANIO.
- Before downloading the software, please read the “Imgxytant Notes” carefully.
- Downloading this firmware will indicate your agreement with the contents of the “Imgxytant Notes”.

IMPORTANT NOTES

- All responsibility in using this firmware lies with the customer. We cannot be held responsible in any way for any damages or losses that may be incurred by the customer as a result of using this firmware.
- Copyrights and all other intellectual property rights for the firmware, as well as the manual, are the property of YAESU MUSEN CO., LTD.
- The revision and modification of this firmware is prohibited. Redistribution, transfer, and resale of downloaded files are also prohibited.
- Downloaded files may only be used for personal use.
- If you cannot perform the firmware upgrade yourself, please consult with one of our sales sites or service centers.

REGARDING THIS FIRMWARE

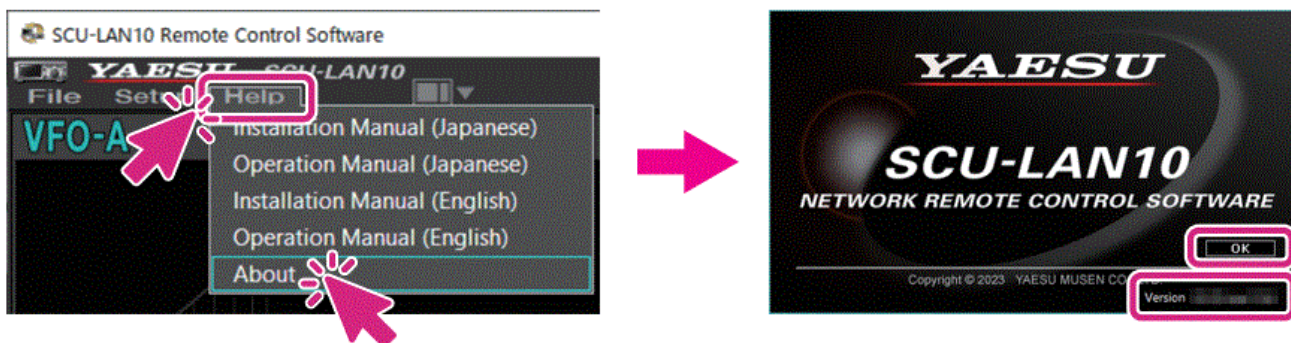
How to Confirm the Firmware Version

In order to check the current firmware version, the SCU-LANIO, computer, and transceiver must be connected and initial settings must be completed. If the initial settings have not been completed, complete the initial settings using the method in the “SCU-LANIO Installation Manual”

Check on the SCU-LANIO remote control software screen

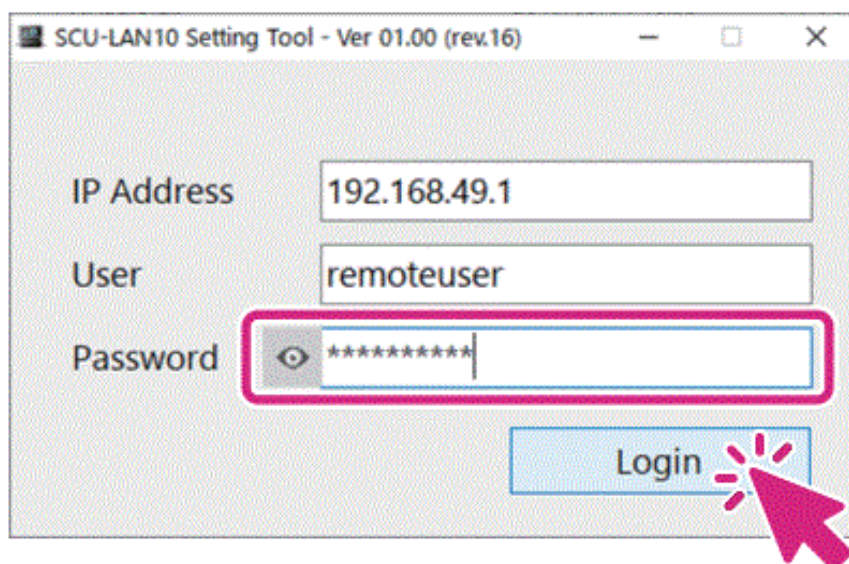
1. Click [Help] at the top left of the screen → Click [About] → The current version will be displayed at the bottom right of the pop-up screen.

2. When finished confirming, click [OK].

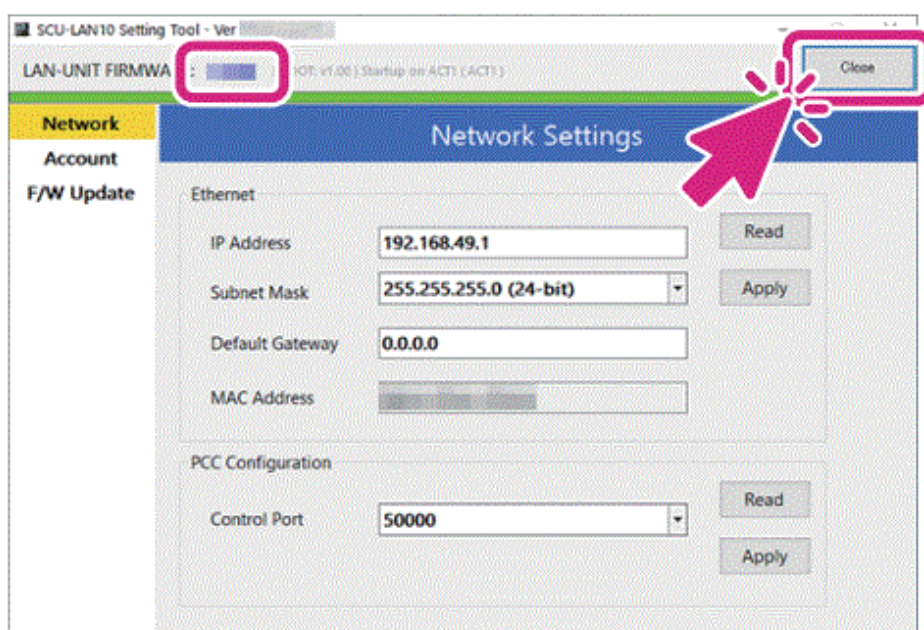


Check on the screen of the setting software “SCU-LANIO Setting Tool”

1. Click the Windows start button and click the [SCU-LANIO Setting Tool] icon in the “Yaesu Musen” group to start the setting software.
2. The login screen will be displayed. Enter your password and click [Login].



3. The current version will be displayed at the top left of the screen.
4. When finished confirming, click [Close].



PREPARING FOR FIRMWARE UPDATE

Already connected the SCU-LANIO, computer, and wireless device and completed the initial settings, please proceed to “Downloading the firmware” below.

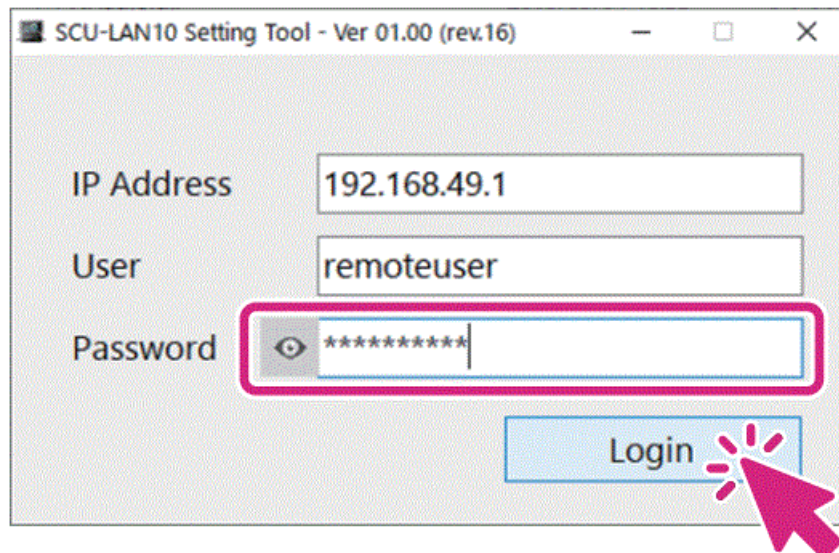
Connect the SCU-LANIO, computer, and transceiver and perform the initial settings. If the initial settings have not been completed, complete the initial settings using the method described in the “SCU-LANIO Installation Manual”.

Downloading the Firmware

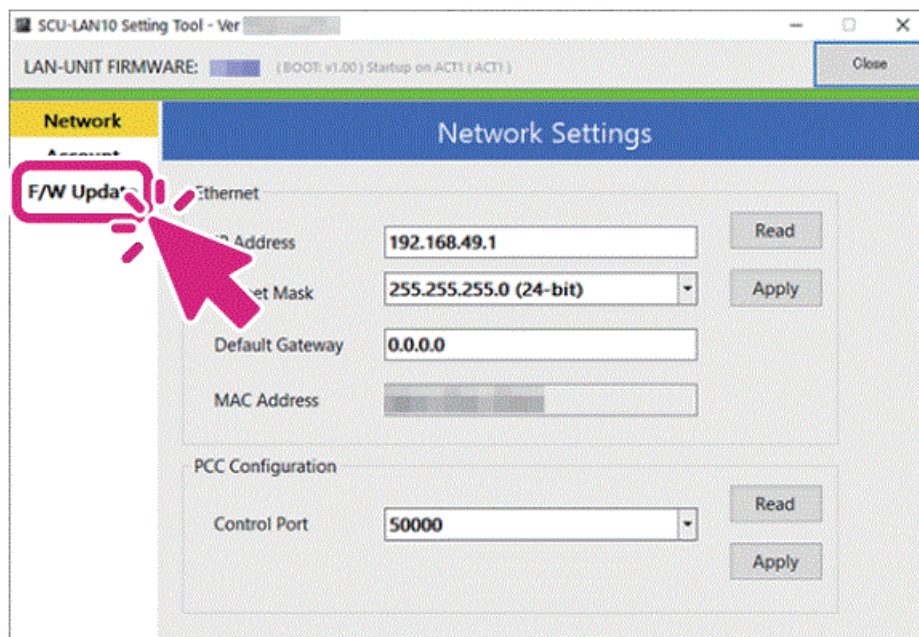
1. Download the “SCU-LANIO_Firmware_update_xxxxxx.zip” compressed file from YAESU website.
2. Unzip the downloaded file. The firmware file (SCU-LANIO LAN_Vxxxx.SFL) is in the “SCU-LANIO_Firmware_update_xxxxxx” folder that is generated at the time of extraction.

HOW TO UPDATE FIRMWARE

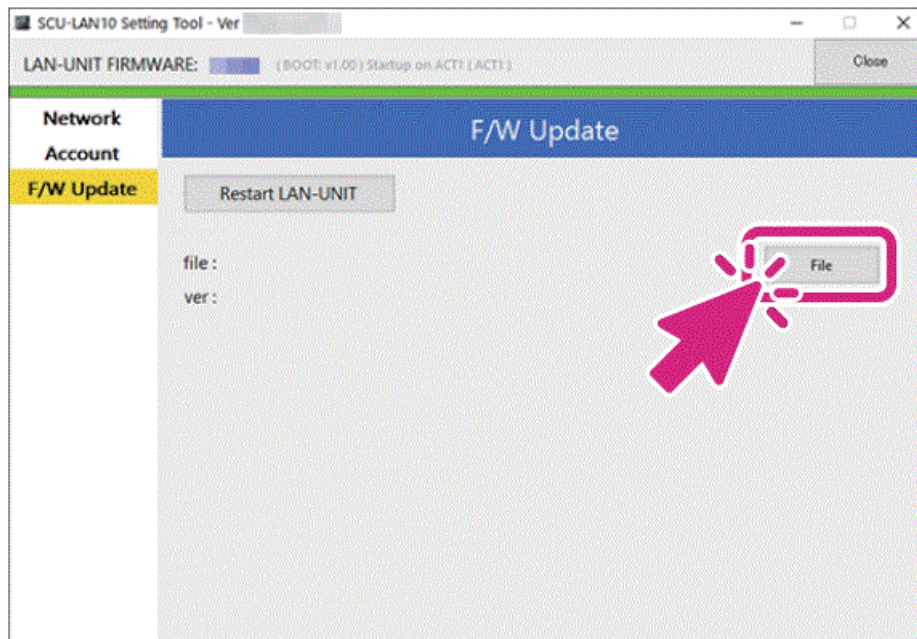
1. Click the Windows start button and click the [SCU-LANIO Setting Tool] icon in the “Yaesu Musen” group to start the setting software.
2. The login screen will be displayed. Enter your password and click [Login].



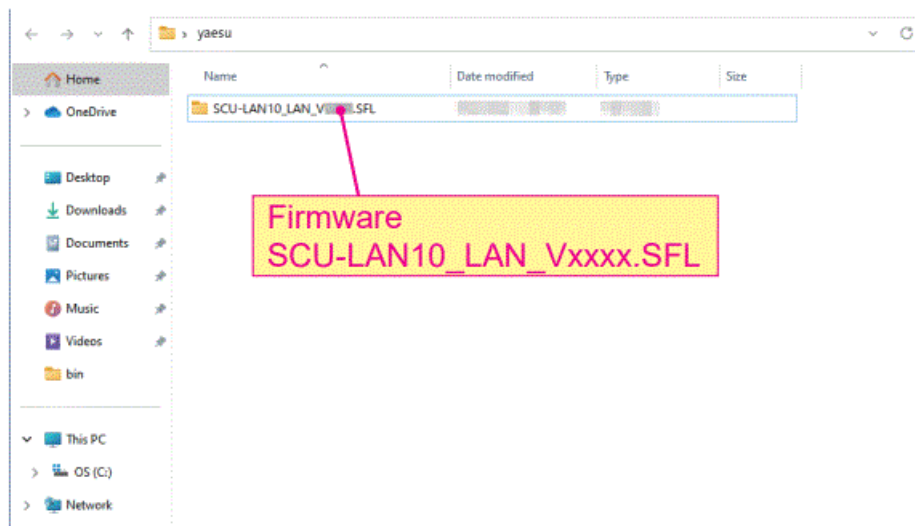
3. The software screen will be displayed, so click [F/W Update].



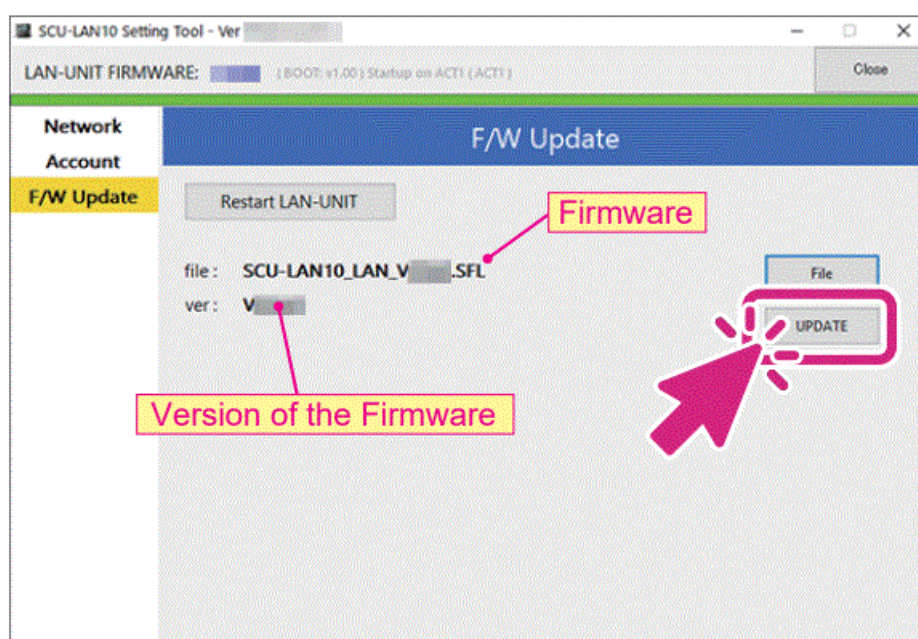
4. Click [File].



5. Select the firmware file (SCU-LAN10 LAN_Vxxxx.SFL) that you downloaded and unzipped in advance and click [Open].



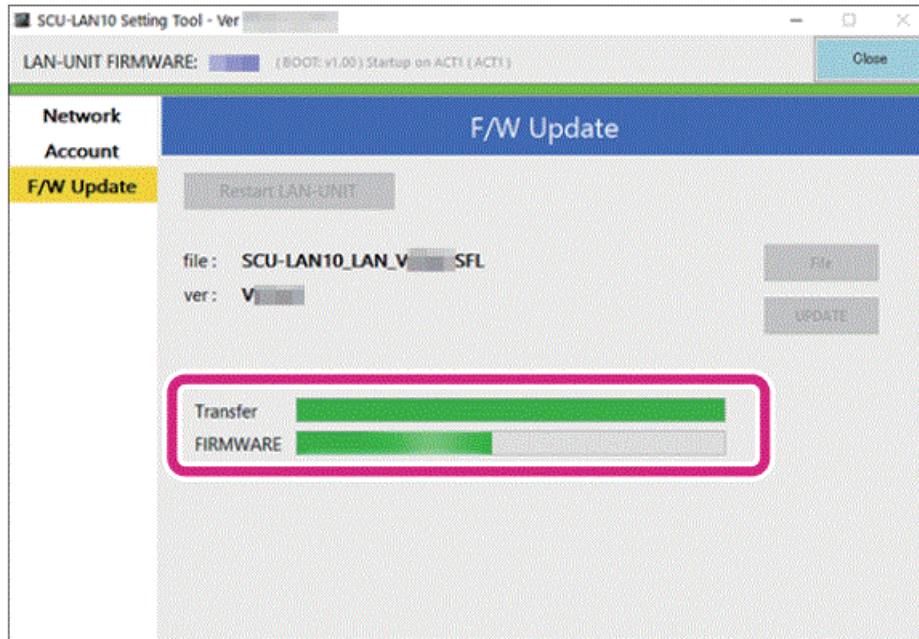
6. Click [UPDATE] to update the firmware.



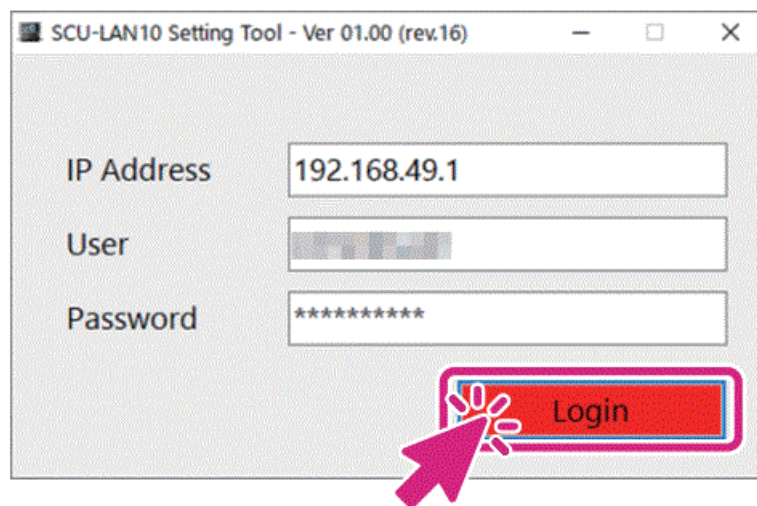
7. The update progress indicator is displayed when the firmware transfer begins.

During the update, the POWER LED on the SCU-LANIO unit will blink in green, and the STATUS LED will blink in red.

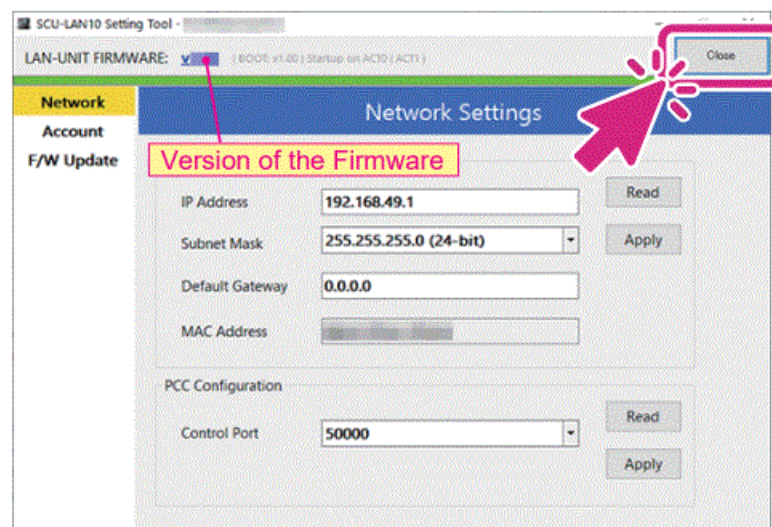
Please wait until the process has been completed.



8. When the update is complete, a login screen will be displayed, so click [Login].



9. The software screen will be displayed, so check the firmware version.



10. When finished confirming, click [Close].

This completes the firmware upgrading process.


Copyright 2023 YAESU MUSEN CO., LTD. All rights reserved.
No portion of this manual may be reproduced without the permission of YAESU MUSEN CO., LTD.

YAESU MUSEN CO., LTD
Omori Bellport Building D-3F 6-26-3 Minami-Oi, Shinagawa-ku, Tokyo, 140-0013, Japan

YAESU USA
6125 Phyllis Drive, Cypress, CA 90630, U.S.A.

YAESU UK
Unit 12, Sun Valley Business Park, Winnall Close Winchester, Hampshire, S023 OLB, U.K.

Documents / Resources

	<p>YAESU SCU-LAN10 Network Remote Control System [pdf] User Manual SCU-LAN10 Network Remote Control System, SCU-LAN10, Network Remote Control System, Remote Control System, Control System</p>
---	--

References

- [User Manual](#)