

*Xuboya*  
**BT-S5**  
**Bluetooth**  
**Helmet**  
**Intercom**



## Xuboya BT-S5 Bluetooth Helmet Intercom User Manual

[Home](#) » [Xuboya](#) » Xuboya BT-S5 Bluetooth Helmet Intercom User Manual 

### Contents

- 1 Xuboya BT-S5 Bluetooth Helmet Intercom
- 2 Specifications
- 3 Packing List
- 4 Installation Steps
- 5 Main Unit Disassembly Steps
- 6 Product Introduction
- 7 Function Introduction
- 8 Button operation instructions
- 9 Bluetooth Status Indication & Prompt
- 10 FCC
- 11 Documents / Resources
  - 11.1 References
- 12 Related Posts

*Xuboya*

Xuboya BT-S5 Bluetooth Helmet Intercom

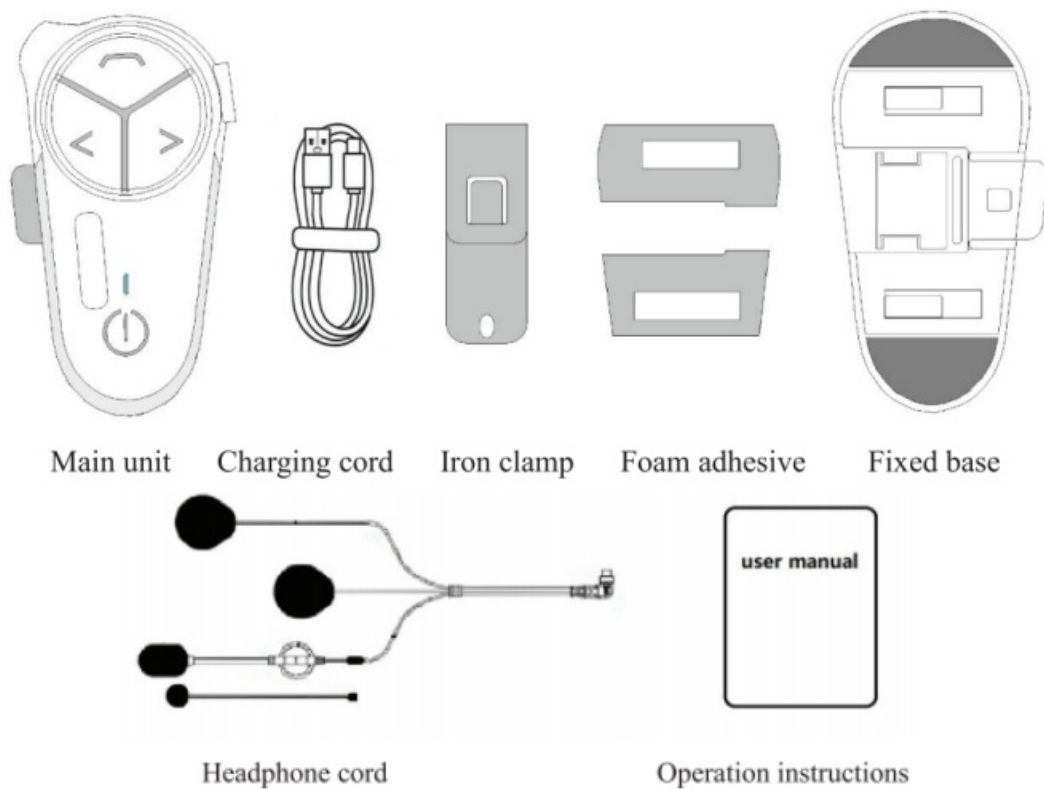


## Specifications

<u>Bluetooth version</u>	<u>5.3</u>
<u>Operating distance</u>	<u>3000 meters</u>
<u>Standby duration</u>	<u>150 hours</u>
<u>Working duration</u>	<u>16 hours</u>
<u>Charging duration</u>	<u>About 2.5 hours</u>
<u>Charging interface</u>	<u>TYPE-C interface</u>
<u>Power supply requirements</u>	<u>5V=1A</u>
<u>Battery type</u>	<u>Chargeable lithium polymer battery</u>
<u>Operating temperature</u>	<u>14°F~122°F (-10°C~50°C)</u>
<u>Storage environment</u>	<u>5°F~131°F (-15°C~55°C)</u>

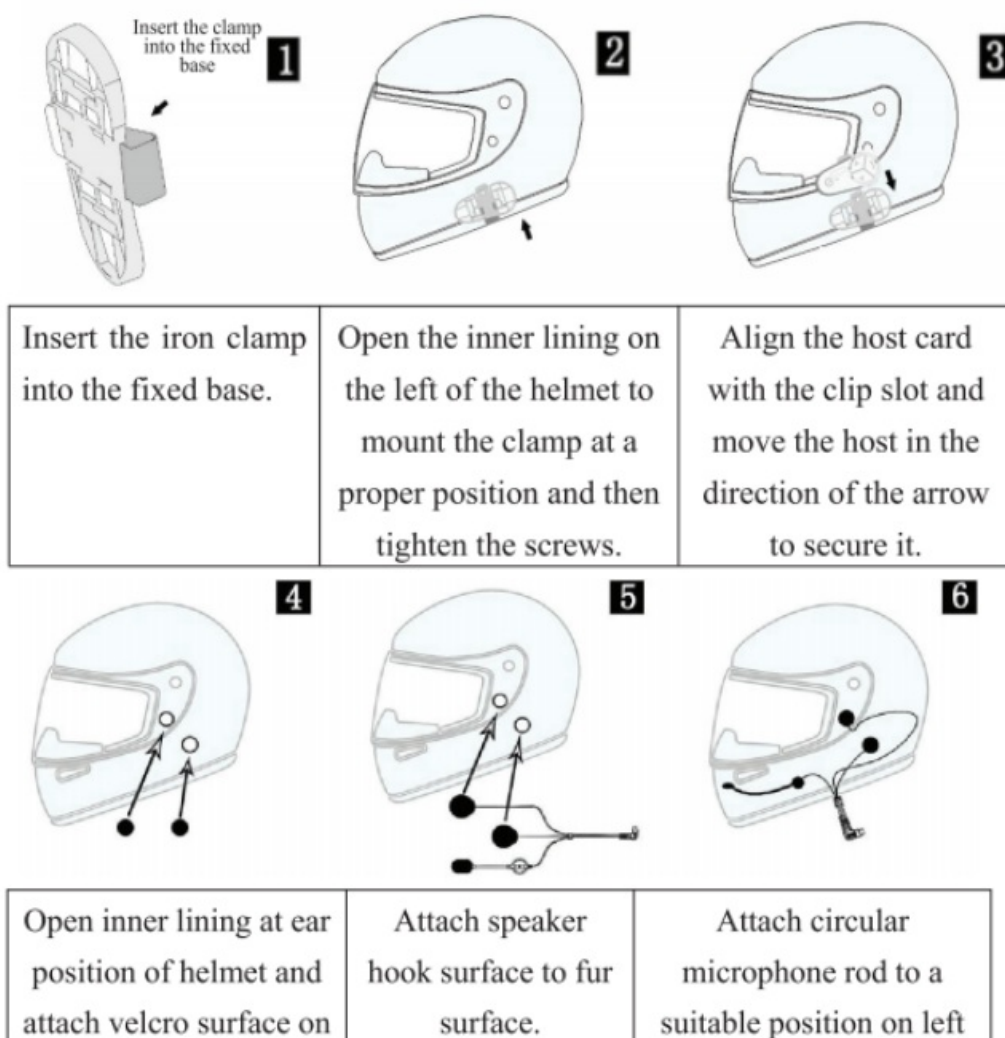
- The working duration and mobile phone types are related to the operating status, so the actual duration may be somewhat different.
- There may be deviations in the operating distance due to effects such as environments and climates, etc.

## Packing List



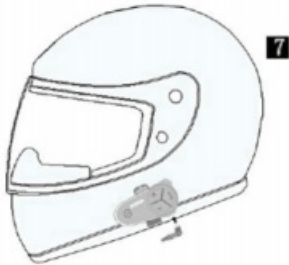
## Installation Steps

### Fixing installation by the iron clamp



speaker of the headphone cable.		side of helmet, so that microphone is aimed at mouth, and then adjust line and inner linings.
------------------------------------	--	--

- Insert plug into headphone jack and installation is completed.

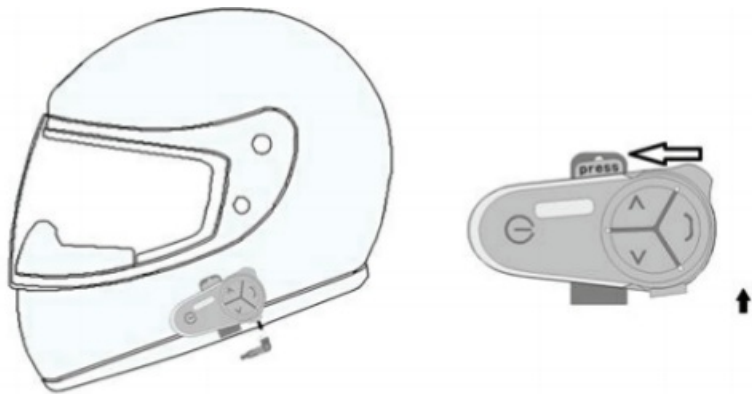


**Base installation by foam adhesive**



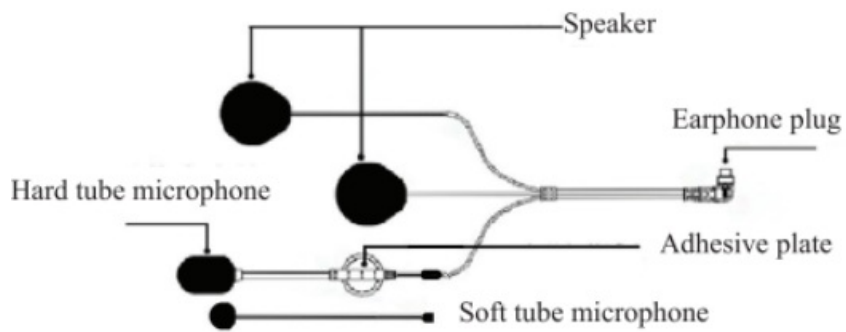
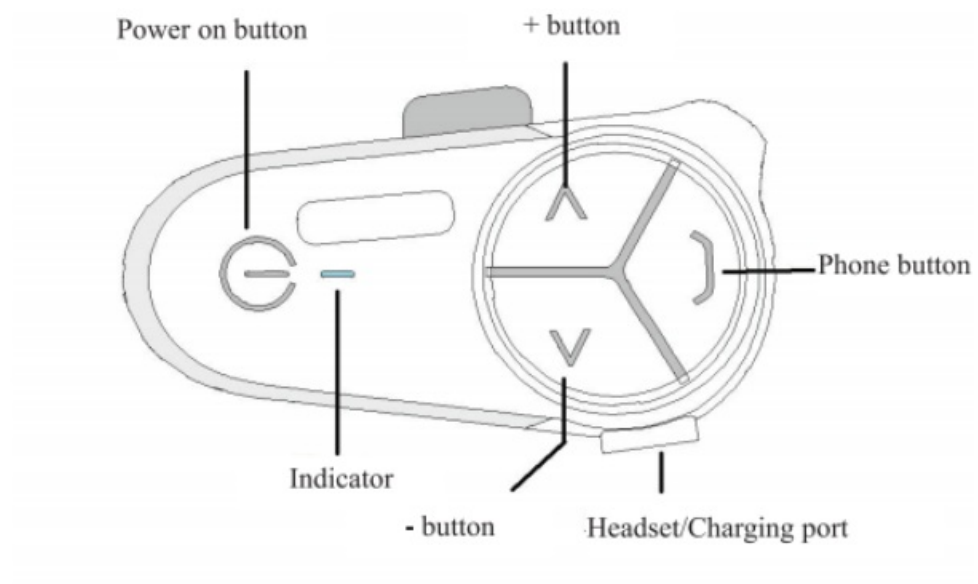
Attach the foam adhesive at the position as shown in the figure.	Tear off the foam adhesive release paper and attach the fixed base to the appropriate position on the left side of the helmet.	Align the host card position at the clamp inlet, and move and tighten the host in the direction of the arrow.
---	---	---

**Main Unit Disassembly Steps**

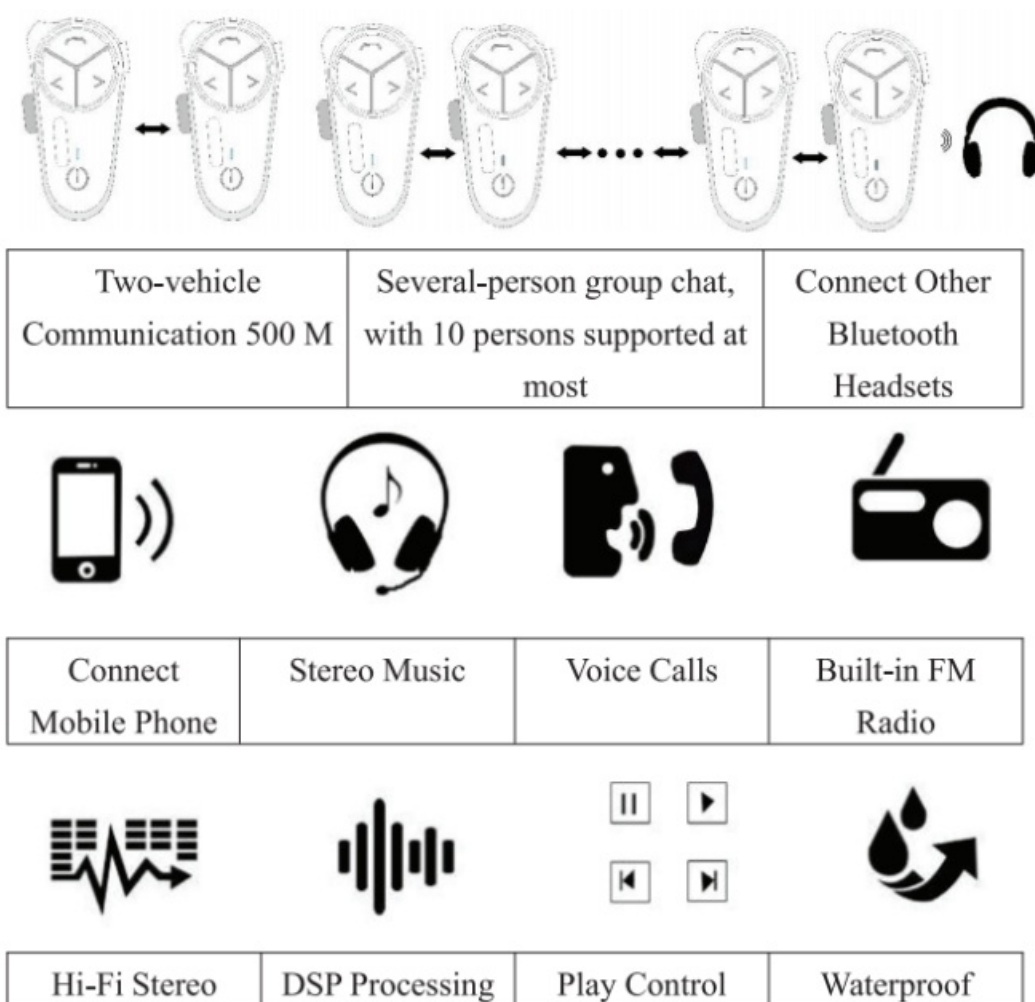


Remove headphone plug.	Hold the “Press” position as shown. The host moves towards the direction as shown by the arrow, and then take it out.
---------------------------	---

## Product Introduction



## Function Introduction



## Button operation instructions

### Power button

- **Power on** – From the power off state, hold it for 4 seconds. Until you hear ‘Power On’, the blue indicator flashes.



- **Power off** – From the power-on state, hold it for 2 seconds. Until you hear ‘Power Off’, the red indicator is lit normally for 1 second.
- **Go to the mobile phone matching mode** – From the power-on state, hold the Phone button for 2 seconds until the red and blue indicators flash alternately.
- **Go to the intercom pairing mode** – In the state of two Bluetooth power-on states, double-click on one of the Bluetooth power-on buttons to go to the intercom pairing mode.
- **Disconnect/Restore Bluetooth Intercom** – During intercom, shortly after pressing the Power on the button, the intercom is disconnected, and you will hear “Intercom disconnected”, then press the intercom restored connection. Power on the button and other button combined functions
  1. Clear mobile phone pairing record – (From the power-on state, hold the + and – buttons simultaneously for 8 seconds until you hear ‘DuDu’ with the red indicator flashing quickly singly for two times, which

means success in the pairing clearance.

2. Pairing with other Bluetooth headsets – (Turn on BT-SS, then press and hold the BT-S Bluetooth power on button and volume down button for 2 seconds to go to the blue indicator flashing mode, turn on the pairing mode of other Bluetooth earphones and earbuds, and wait for the BT-S5 Bluetooth to turn into a blue indicator slow flashing, and you will hear the 'Interconnect Connected' prompt tone to confirm the successful pairing)

## Phone Button

- **Answer Call**—In the state of connecting to a mobile phone, when an incoming call is received, short press it to answer or answer the automatically call without any operation for 10 seconds after the incoming call. (The factory setting default is automatic answering off. In the standby state, double click on [Volume +] to enable it, and double click on [Volume +] once



- again to disable the automatic answering function).
- **Reject Call**—When the phone is connected, press for 2 seconds to reject the call.
- **End a call** – During a call, shortly press the Phone button to hang up.
- **Music play pause** — to play music while the mobile phone is connected. Shortly press the Phone button.
- **Start FM**—When there is no call and music, double-click the button to hear 'radio on' for a better outdoor effect.
- **Go to the pairing mode for the second time** (Hold the Phone button for 2 seconds, and the red and blue indicators flash alternately. Now you can search and connect with your mobile phone)

## Plus Button

- **Volume Up**— Long press it, and the volume will increase, and a 'beep' tone will be heard at maximum.



- **Next Music** —When playing music, long press it to switch to the next music.
- **FM Tuning**—In FM mode, long press it to search up the station.

## Minus Button

- **Volume Down**— Long press it, and the volume will decrease.
- **Previous Music**—When playing music, long press it to switch to previous music.
- **FM Tuning**—In the FM mode, press Down to search for stations.
- **Voice call** — When it is on standby, double-click on [Volume -] to awaken the voice assistant.

## Bluetooth Status Indication & Prompt



- **Power On Status**—When power is on, you can hear ‘Power On’, when the intercom is connected, you can hear ‘Connected Intercom’, when the intercom hangs up, you can hear ‘Intercom disconnected’, and blue light flashes every 2 seconds.
- **Charging Status**—The red light is always on when charging, and the red light is off when it is fully charged.
- **Low battery warning** — When there’s low battery power, there is the prompt ‘Battery Low’. In the case of low power when it is being used, there is a prompt as ‘Battery Low’ every five minutes, and the red indicator flashes once simultaneously.

## Pairing Mode

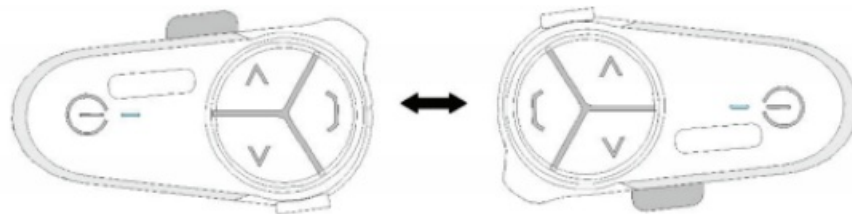
### BT-S5 Bluetooth and Phone Pairing

- **Step 1:** Put the Bluetooth and your phone within the range of 1 meter.
- **Step 2:** The Bluetooth is activated. Long press the Phone button for 2 seconds until the red and blue indicators flash alternately to go to the pairing mode. Activate the mobile phone Bluetooth to search Bluetooth devices. Select BT-SS, and click for connection. After a successful connection, you will hear ‘Headset connected’.

**Note:** For the phone with a record of pairing with Bluetooth, it will be connected automatically the next time the power is on.

### Two sets of BT-S5 Bluetooth intercom pairing

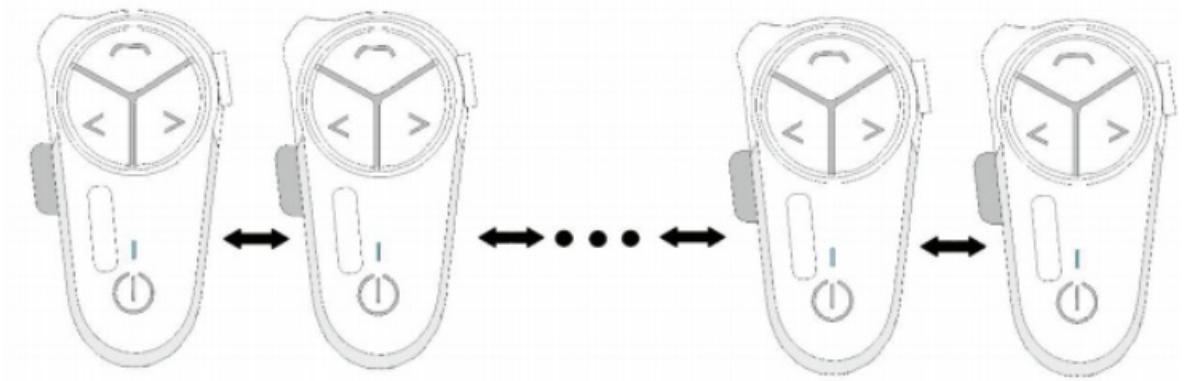
- **Step 1:** Put two Bluetooth devices within a 1-meter range and turn them on simultaneously.



- **Step 2:** Double-click on one of the Bluetooth power buttons to automatically search for another Bluetooth pairing. After successful pairing, you will hear ‘Interconnect Connected’.
  - **Note:** There are two ways to pair two Bluetooth intercoms and simultaneously connect a mobile phone:
  - **Type 1:** Both Bluetooth devices are powered on. First, pair and connect the Bluetooth devices with your phone (refer to Step 9.1), and then proceed with the intercom connection (double click on the power button on one of the Bluetooth devices to enter intercom pairing mode).
  - **Option 2:** First connect the two Bluetooth intercoms (refer to Step 9.2), then pair and connect the phone with Bluetooth (long press the Bluetooth phone button for 2 seconds to go to the phone pairing mode).

### Description of BT-S5 group intercom (for 3-10 persons) pairing.





- **Step 1:** First, enable two sets of Bluetooth BT-S products A and B to be powered on.
  - Activate A and B. (Note: for multi-person intercom, 10 products at most can be connected. The following 10 products are defined as A, B, C, D...J).
- **Step 2:** Proceed with pairing in order
  1. Double-click on the Product B power-on button. After A and B turn into blue indicators and flash slowly, you will hear 'Intercom Connected'.
  2. After a successful intercom connection of A and B, enable Product C, and then double-click on C's power button. After B and C turn into the blue indicator flashing slowly, you will hear 'Intercom Connected'.
  3. After successful matching and intercom connection of B and C, enable Product D and double click on the power on button of D. Wait for both C and D to turn blue and flash slowly until you hear 'Interconnect Connected'.
  4. Follow the above steps to connect to the group intercom. 10 simultaneous intercom group chats at most can be connected.

### Pairing of BT-S5 with other Bluetooth headsets

- **Step 1:** 2 Bluetooth devices are powered on. Put the two Bluetooth devices within the range of 1 meter.
- **Step 2:** In the power-on state, hold BT-S Bluetooth's power button and Volume – buttons for 2 seconds until the blue indicator flashes quickly.
- **Step 3:** Enable other Bluetooth devices to go to the matching mode.
- **Step 4:** When BT-S performs an automatic search for other Bluetooth devices for pairing, you will hear 'Intercom Connected', which means a successful connection.

### Description of function priority

1. In the intercom state, phone answering is the priority, the intercom will temporarily exit, and after a call is ended, the intercom will resume.
2. In the state of music play, go to the intercom call. The music is paused. After the intercom call is ended, the music play will resume.

Note: A call is then followed by an intercom, and the intercom is followed by music (In the intercom state, you can also play music)

### Notes

1. If you stop using this unit for long, please store it at a dry place, and charge the unit regularly (charge once every three months) to ensure that the unit can work normally;
2. The storage temperature of the unit is – 15°C to 55°C, so please do not store it in an environment where the temperature is too high or too low. Otherwise, it may hurt the service life of the unit;
3. Please do not expose this unit to open flames to avoid explosion;

## FCC

### FCC Caution:

This device complies with part 15 of the FCC Rules. Operation is subject to the following two conditions: (1) This device may not cause harmful interference, and (2) this device must accept any interference received, including interference that may cause undesired operation. Any changes or modifications not expressly approved by the party responsible for compliance could void the user's authority to operate the equipment.

**NOTE:** This equipment has been tested and found to comply with the limits for a Class B digital device, under Part 15 of the FCC Rules. These limits are designed to provide reasonable protection against harmful interference in a residential installation. This equipment generates, uses, and can radiate radio frequency energy and, if not installed and used by the instructions, may cause harmful interference to radio communications. However, there is no guarantee that interference will not occur in a particular installation. If this equipment does cause harmful interference to radio or television reception, which can be determined by turning the equipment off and on, the user is encouraged to try to correct the interference by one or more of the following measures:

- Reorient or relocate the receiving antenna.
- Increase the separation between the equipment and the receiver.
- Connect the equipment to an outlet on a circuit different from that to which the receiver is connected.
- Consult the dealer or an experienced radio/TV technician for help.

The device has been evaluated to meet general RF exposure requirements. The device can be used in portable exposure conditions without restriction.

## Documents / Resources

	<p><a href="#">Xuboya BT-S5 Bluetooth Helmet Intercom</a> [pdf] User Manual BTS5, 2A4M8-BT-S5, 2A4M8BTS5, BT-S5 Bluetooth Helmet Intercom, BT-S5, Bluetooth Helmet Intercom, Helmet Intercom, Intercom</p>
---	--

## References

- [User Manual](#)

[Manuals+](#), [Privacy Policy](#)

This website is an independent publication and is neither affiliated with nor endorsed by any of the trademark owners. The "Bluetooth®" word mark and logos are registered trademarks owned by Bluetooth SIG, Inc. The "Wi-Fi®" word mark and logos are registered trademarks owned by the Wi-Fi Alliance. Any use of these marks on this website does not imply any affiliation with or endorsement.