

Contents [[hide](#)]

- [1 Xuancheng WCM Wireless Charging Module](#)
- [2 Specifications:](#)
- [3 Product Usage Instructions](#)
- [4 FAQs](#)
- [5 Documents / Resources](#)
 - [5.1 References](#)



Xuancheng WCM Wireless Charging Module



Specifications:

- Model: WCM
- Manufacturer: Xuancheng Luxshare Precision Industry Co., Ltd
- Address: No.5, Baishou Road, Hi-Tech Industrial Development Zone, Xuancheng,

Anhui Province, P.R. China

- Max. Output: 15W
- Input: 13.5V 3A
- Operating Temperature: -40°C to 85°C
- Storage Temperature: -40°C to 120°C

Product Usage Instructions

- The Wireless Charging Module (WCM) is designed to charge Qi-enabled smartphones wirelessly at up to 15W of power. Follow the steps below for proper usage:

Step 1: Placement

Ensure your smartphone is Qi-enabled. Remove any metal phone case as it may interfere with the charging process. Place your smartphone on the charger with the screen facing up.

Step 2: Power Connection

Connect the Wireless Charging Module to a power source using the provided input specifications (13.5V 3A).

Step 3: Charging Process

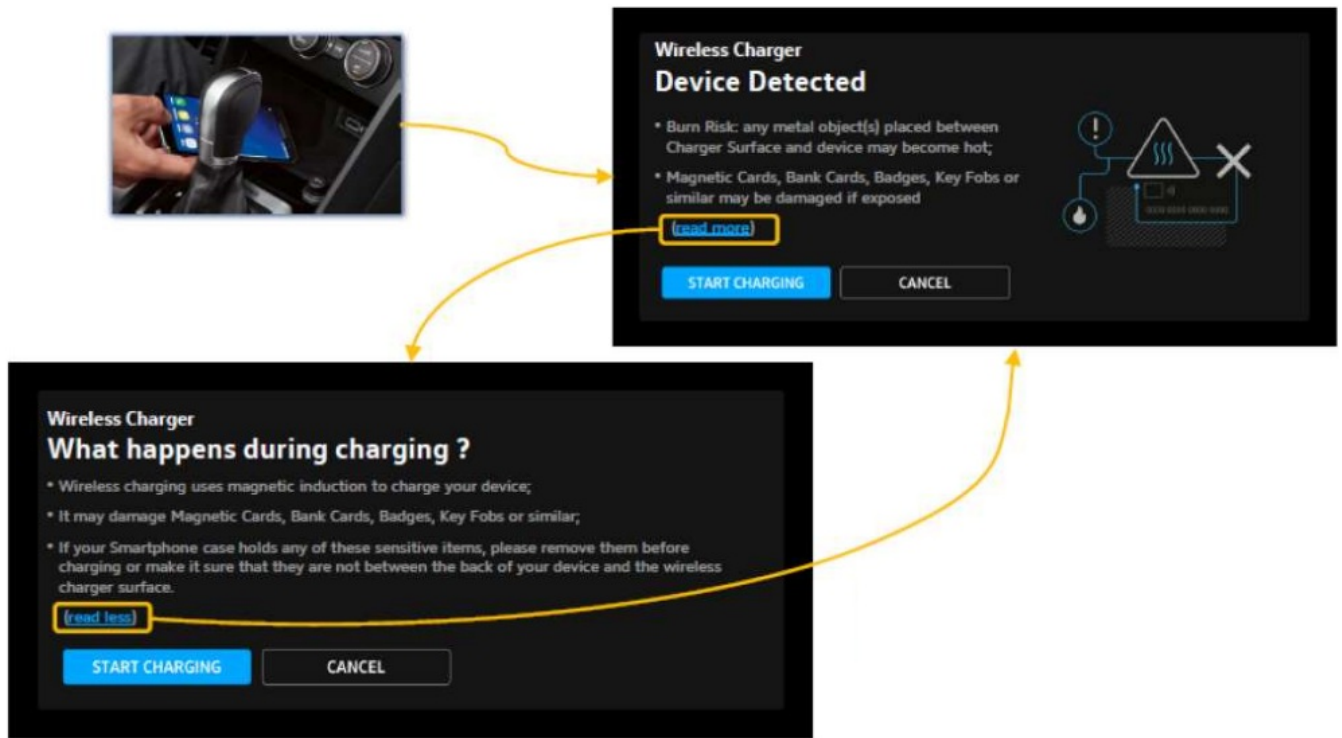
Once the smartphone is correctly placed on the charger, the charging process will initiate automatically. Ensure proper alignment for efficient charging.

User Guide of Wireless Charger Module (WCM):

- The Wireless Charger Module (WCM) will be placed near the Dashboard of the Vehicle as shown in the picture below. It interacts with the Radio module via a dedicated TELON line. WCM sends the status “Charger Available” to the Radio Module once it wakes up. When the user places the mobile phone on top of the WCM. The user must accept the request “Start Charging” on the Radio as shown below.
- The Wireless Charger operating frequency is 127 KHz.

MIB Regio — HMI Warning Screens + User Acceptance

Before the charging process, the driver must accept it by pressing the “START CHARGING” icon; otherwise, it will not start charging.

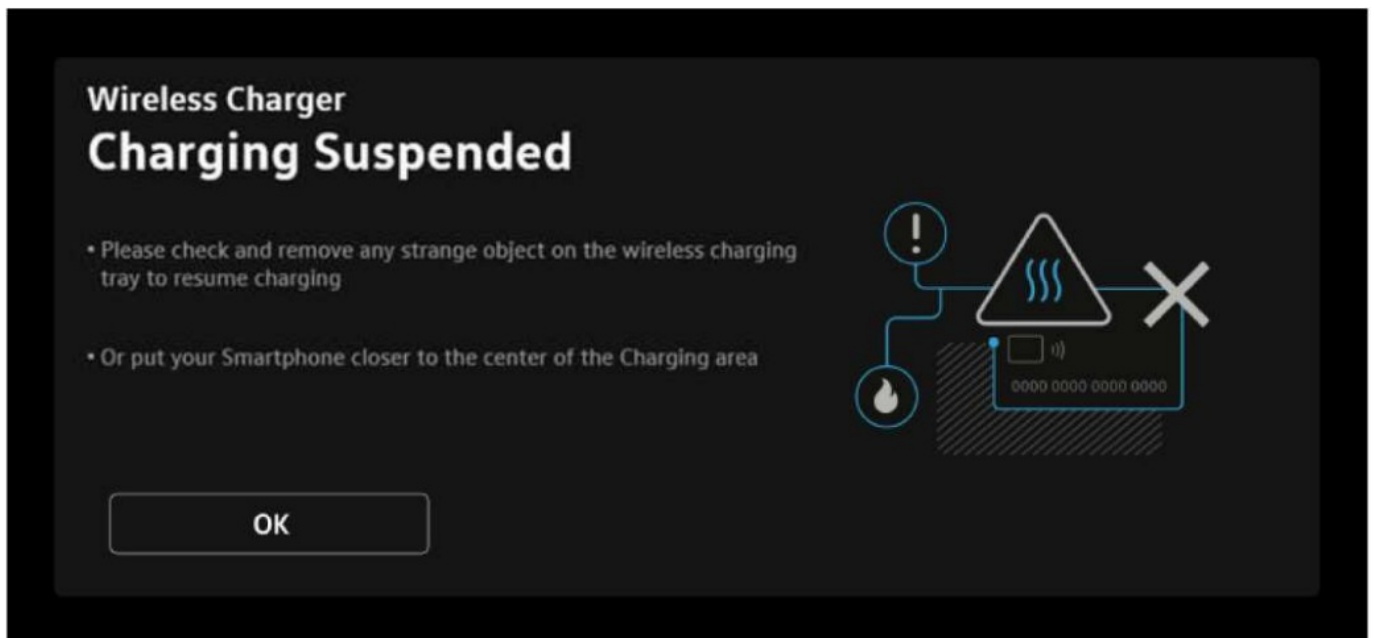


Notes:

1. This Warning message shall be presented only once per Deep Sleep Cycle
2. There is a timeout (30s) for user selection
3. In case of timeout expiration, "Start Charging" is the default
4. Any User iteration (e.g, "read more", "read less) results in a timeout

MIB Regio — HMI Warning Screens + Charging Suspended

In case the FOD state, the driver will get a warning message. The chargeable device must be removed, and once any foreign object is removed, the chargeable device can be replaced to resume charging.



MIB Regio —Special Use Cases

- When we are in the WLC screen (Device detection)
 - CP /AA Device plugged in -> HIJ shall start the session behind this WLC device detection screen.
 - If the CP/AA device reconnects -> HU shall start the session in the background (behind the screen)
- Received a Phone call->No HMI notification/ no HMI impact. The user can still use MFL and control the call. Same as RVC case
- When HIJ is in the screen-off state
 - Device is put in the charging dock -> HIJ shall turn on the display and show the notification.n
- When we are in the FOD screen
 - CP /AA Device plugged in -> HIJ shall start the session can start in foreground. No Impact on CP/AA
 - If the CP/AA device reconnects -> HIJ shall start the session based on the last user mode. No impact
 - Received a Phone call->acknowledge and show the call status on HMI
- When HIJ is in the screen-off state
 - Device is put in charging dock -> HU shall not be impacted (Less Impact on Power Management logic)
 - If the user starts the screen, then HU shall present this popup as it was not charging.

WARNING! This device must be used more than 17 cm from the Driver’s knee.

FAQs


Q: Why is my wireless charger not working with my phone case on?

A: The wireless charger may not function properly if your phone case is made of metal, as it can block the charging signal. Remove the phone case and try again.

Q: What should I do if my device does not charge wirelessly?



A: Make sure your smartphone is Qi-enabled and properly aligned on the charger. Check the power source and connection to ensure proper functionality.

Documents / Resources

	Xuancheng WCM Wireless Charging Module [pdf] Owner's Manual 2BBAQ-WCM, 2BBAQWCM, WCM Wireless Charging Module, WCM, Wireless Charging Module, Charging Module, Module
--	--

References

- [User Manual](#)

 Xuancheng
 2BBAQ-WCM, 2BBAQWCM, Charging Module, Module, WCM, WCM Wireless Charging Module, Wireless Charging Module, Xuancheng

Leave a comment

Your email address will not be published. Required fields are marked *

Comment *

Name

Email

Website

☐ Save my name, email, and website in this browser for the next time I comment.

Post Comment

Search:

e.g. whirlpool wrf535swhz

Search

[Manuals+](#) | [Upload](#) | [Deep Search](#) | [Privacy Policy](#) | [@manuals.plus](#) | [YouTube](#)

This website is an independent publication and is neither affiliated with nor endorsed by any of the trademark owners. The "Bluetooth®" word mark and logos are registered trademarks owned by Bluetooth SIG, Inc. The "Wi-Fi®" word mark and logos are registered trademarks owned by the Wi-Fi Alliance. Any use of these marks on this website does not imply any affiliation with or endorsement.