

**XTREM
BOTS**
XTREM BOTS MAZZY
Buildable and
Programmable Robot
Kit I



XTREM BOTS MAZZY Buildable and Programmable Robot Kit Instruction Manual

[Home](#) » [XTREM BOTS](#) » XTREM BOTS MAZZY Buildable and Programmable Robot Kit Instruction Manual 



Contents

- [1 XTREM BOTS MAZZY Buildable and Programmable Robot Kit I](#)
- [2 PASOS DE MONTAJE](#)
- [3 VEHICLE](#)
- [4 ROBOT](#)
- [5 HOW TO PLAY](#)
- [6 FCC Radiation Exposure statement](#)
- [7 Documents / Resources](#)
 - [7.1 References](#)
- [8 Related Posts](#)

XTREM BOTS MAZZY Buildable and Programmable Robot Kit I



Product Specifications

- Manufacturer: Blue Rocket
- Age Recommendation: Not suitable for children under 3 years of age
- Compliance: Complies with essential requirements of Directive 2014/53/EU
- Manufacturer Address: Room 307, Heng Ngai Jewelry Centre, 4, Hok Yuen Street East, Hunghom, Kowloon, HONG KONG
- Disposal: Remove batteries before disposal; bring electrical components to local collection points

Product Usage Instructions

Warnings and Cautions

WARNING! Not suitable for children under 3 years of age. Contains small parts that could be swallowed or inhaled by a child and that can cause choking.

Changes or modifications not approved by the manufacturer may cancel the user's right to use it.
Colours and specifications may vary from photos and illustrations.

Assembly Tips

Follow the assembly steps provided in the manual carefully to ensure proper setup.

Play with Maze Pieces & Examples

For additional playing options, refer to page 27 for using maze pieces and examples.

Frequently Asked Questions (FAQ)

Q: Can I use this product with children under 3 years old?

A: No, this product is not suitable for children under 3 years of age due to small parts that can be a choking hazard.

WARNINGS AND CAUTIONS

- Change batteries if power decreases.
- Always remove batteries from the toy when it is not being used for a long period of time.
- Check regularly that the plug and other parts are not damaged. In case of deterioration, do not use the product until it has been repaired.
- The toy may malfunction under electrostatic discharge interference. If the toy does not respond, reset it.
- Wipe the toy gently with a clean cloth.
- Keep the toy away from direct heat.
- Do not submerge the toy into water that can damage the electronic assemblies.

Cautions

- Do not pick up the vehicle when performing.
- Keep hands, hair and clothing away from tires and when the switch is on (ON).
- Avoid hitting people, animals and household furniture.
- **ATTENTION!** When the robot's batteries are discharged, the BLUETOOTH connection will stop working and

could not be programmed using the APP.

Special notes

- Before first use, read the user's information together with your child.
- This toy intended to be used in domestic area (house and garden) only.
- This product shall be assembled by an adult.
- Assembly should be performed under adult supervision (changing batteries/ spare parts, trimming etc.)

WARNING! Not suitable for children under 3 years of age. Contains small parts that could be swallowed or inhaled by a child and that can cause choking.

Changes or modifications to this product that are not expressly approved by the manufacturer may cancel the user's right to use it.

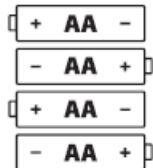
BLUETOOTH® technology, brand and logo are owned by and registered to Bluetooth SIG, Inc.

Battery warnings

- Non-rechargeable batteries are not to be recharged.
- Rechargeable batteries are to be removed before being charged.
- Rechargeable batteries are only to be charged under adult supervision.
- Different types of batteries or new and used batteries are not to be mixed.
- Only batteries of the same or equivalent type as recommended are to be used.
- Batteries are to be inserted with correct polarity.
- Exhausted batteries are to be removed from the toy.
- The supply terminals are not to be short-circuited.
- Do not mix old and new batteries.
- Do not mix alkaline, standard (carbon-zinc) or rechargeable (nickel-cadmium) batteries.

COLOURS AND SPECIFICATIONS MAY VARY FROM PHOTOS AND ILLUSTRATIONS.

Bluerocket™ declares that the toy complies with essential requirements and any other applicable or enforceable provisions of Directive 2014/53/EU. You can view the Declaration of Conformity, Doc Mazzy XT380851, on the following link: <http://www.worldbrands.es/es/declaraciones-de-conformidad>

	Batteries requirements: Power supply: == Characteristics: DC 6 V Quality and type: 4 x 1,5 V AA/LR6 (not included)
---	--

BLUE ROCKET™: Room 307, Heng Ngai Jewelry Centre, 4, Hok Yuen Street East, Hung Hom, Kowloon, HONG KONG.

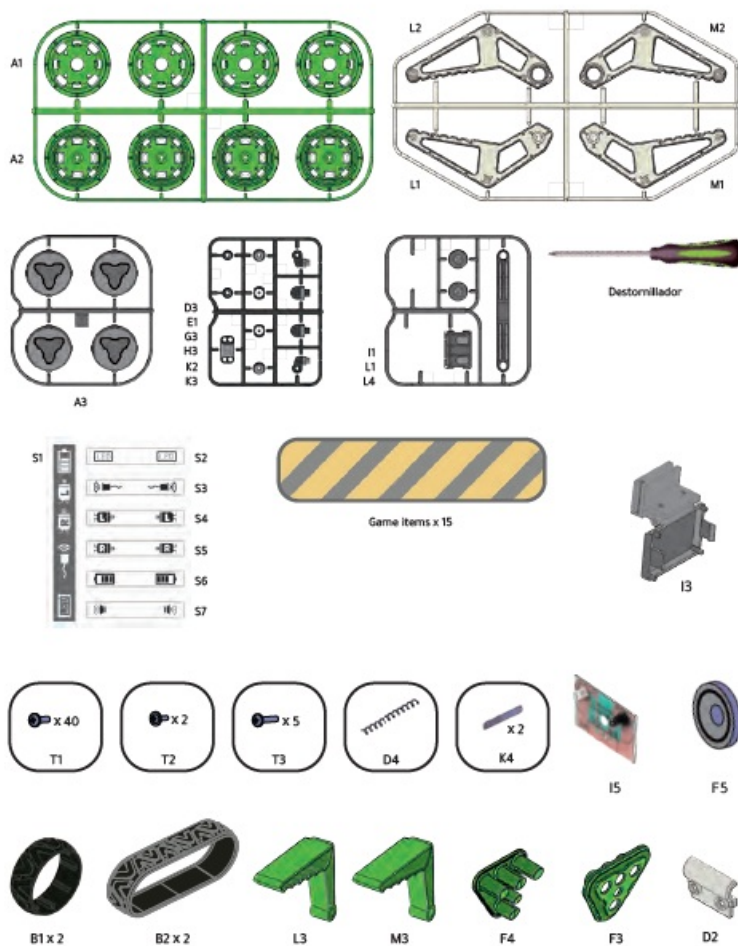


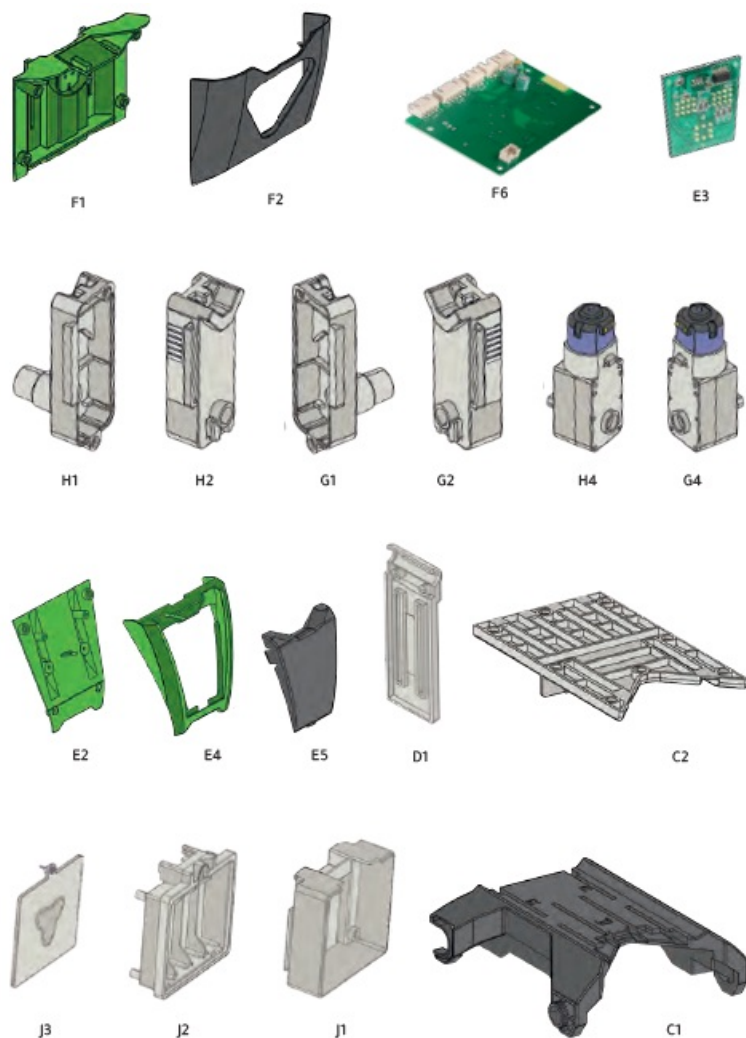
The crossed-out dustbin symbol indicates that batteries, rechargeable batteries, button cells, battery packs, etc. must not be put in the household waste. Batteries are harmful to health and the environment. Please help to protect the environment from health risks. If the toy is out of use, please use common household tool to break the product for built-in rechargeable battery operated toy or unscrew the battery door for replaceable battery operated toy, then take the battery out from the toy. Dispose of battery in accordance with your local battery recycling or disposal laws.

WEEE: When this appliance is out of use, please remove all batteries and dispose of them separately. Bring electrical appliances to the local collecting points for waste electrical and electronic equipment. Other components can be disposed of in domestic refuse.



CONTENIDO





CONSEJOS DE MONTAJE

- Cut off plastic parts only when they are to be used, not in advance.
- Cut the burrs off before assembling the pieces.
- Always use T1 screws unless others are specified.

HERRAMIENTAS NECESARIAS

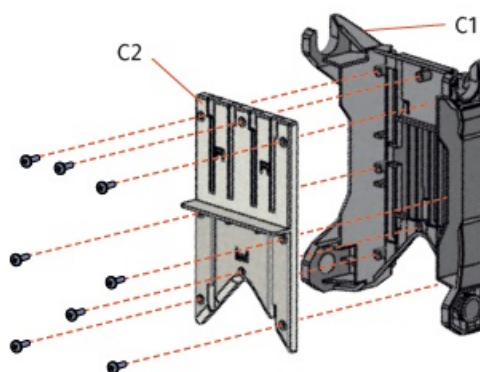
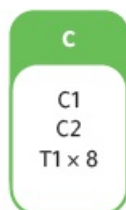
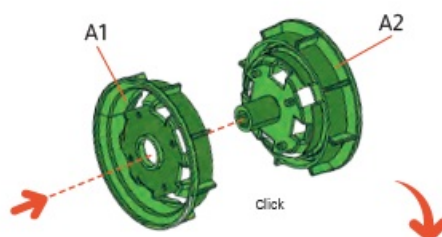
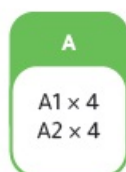
- Cutting pliers or scissors (not included)

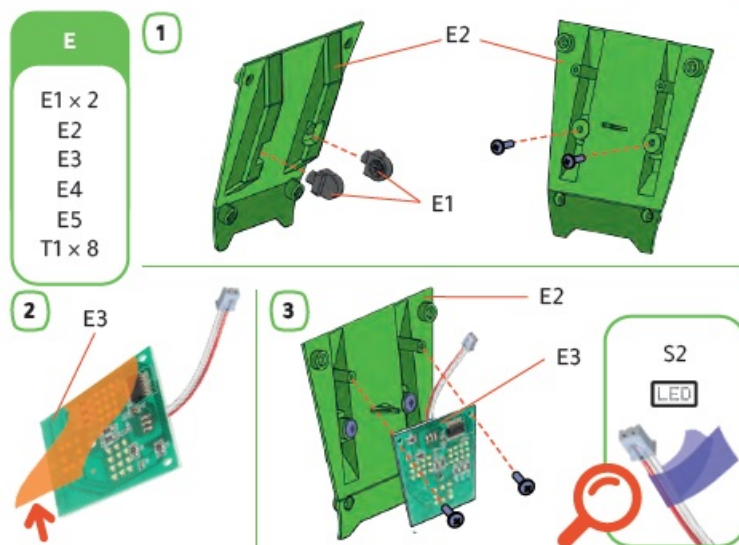
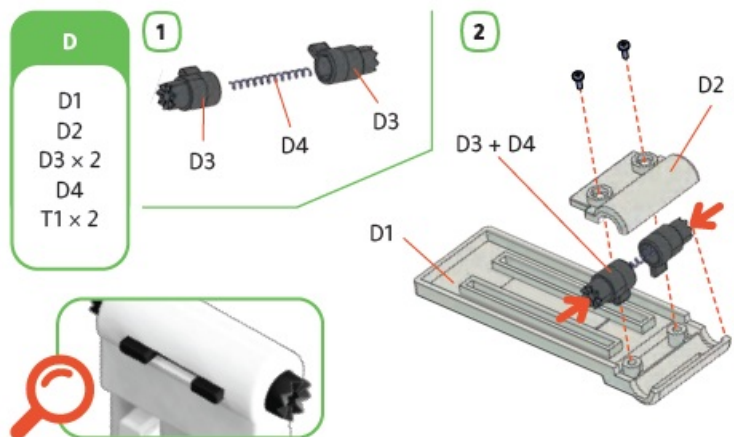


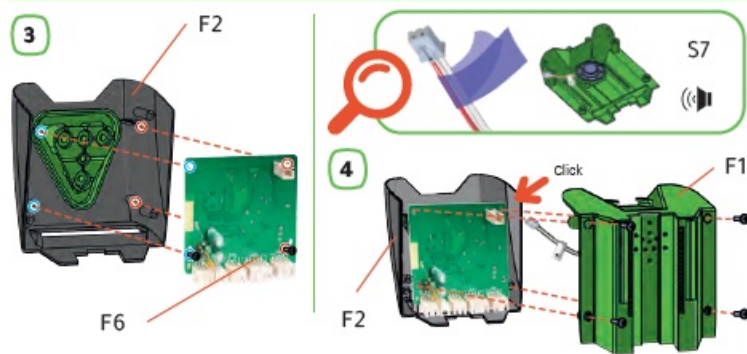
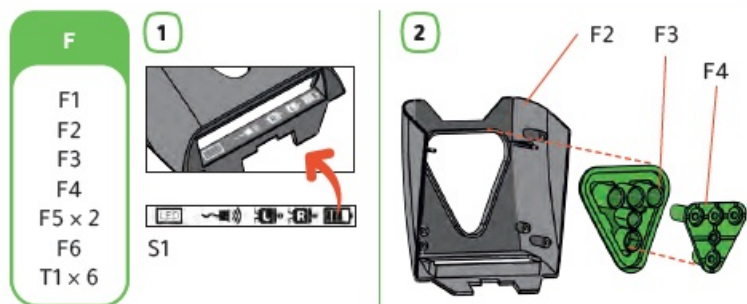
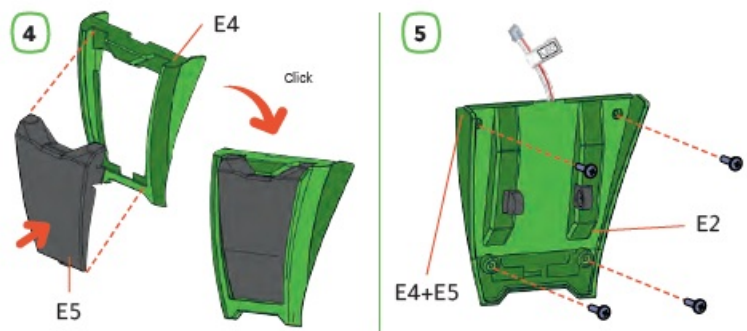
- Destornillador Philips (incluido)

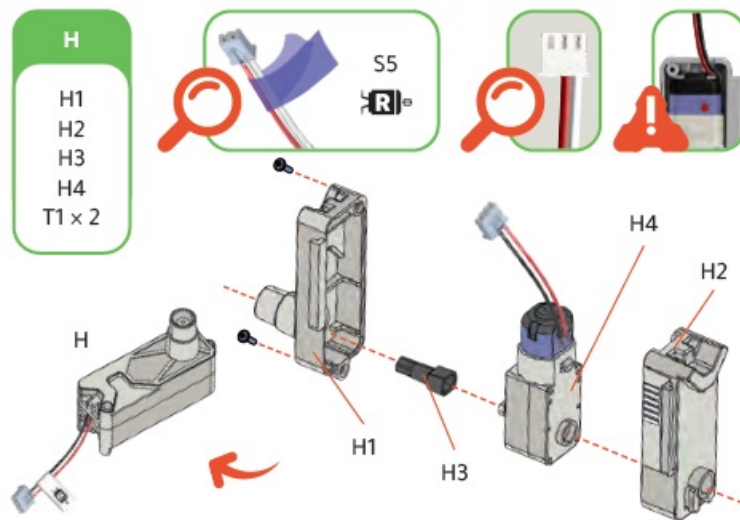
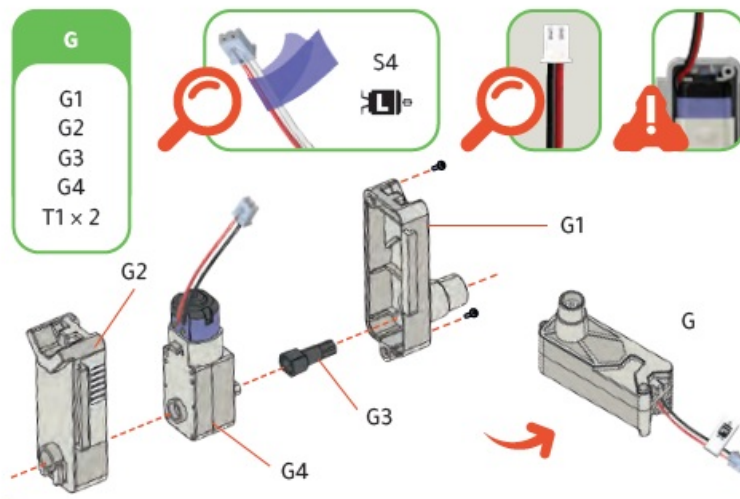


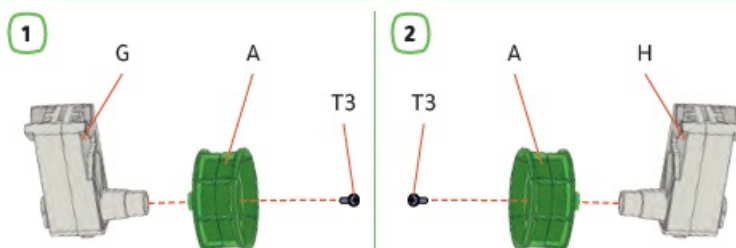
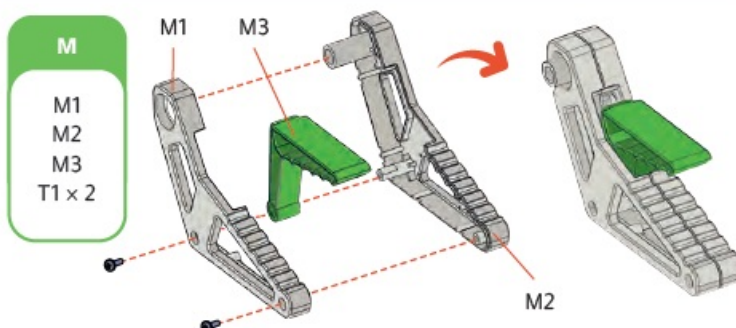
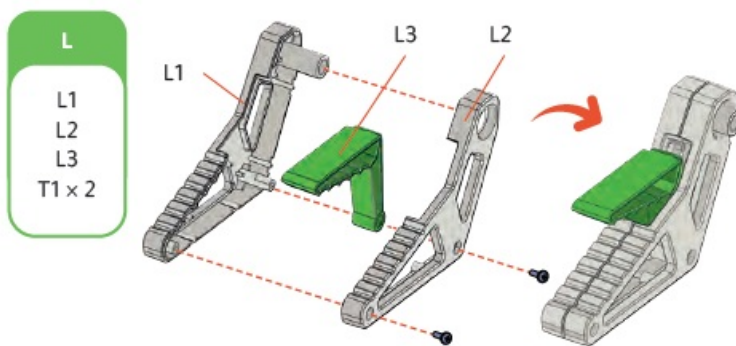
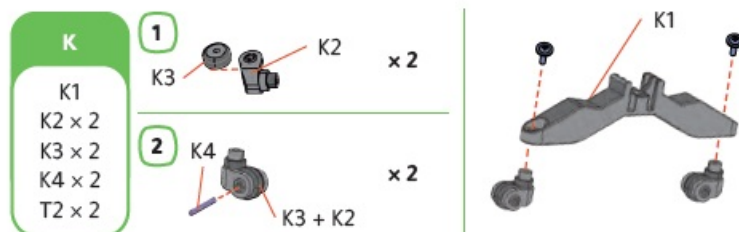
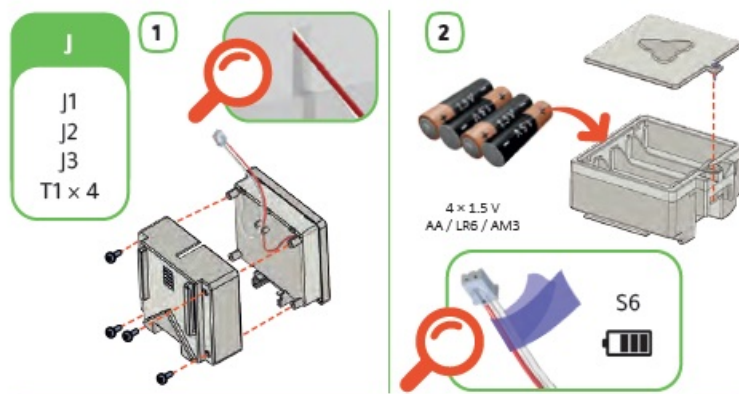
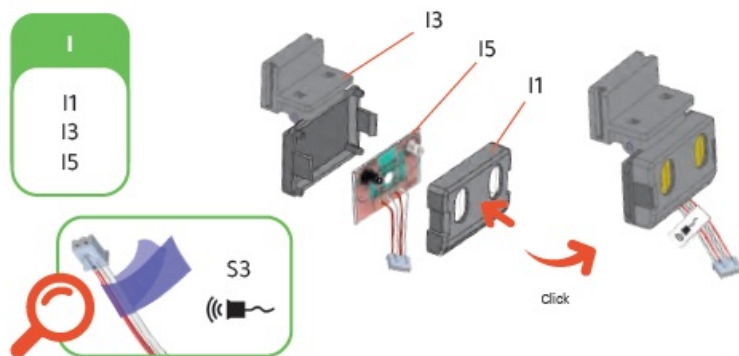
PASOS DE MONTAJE

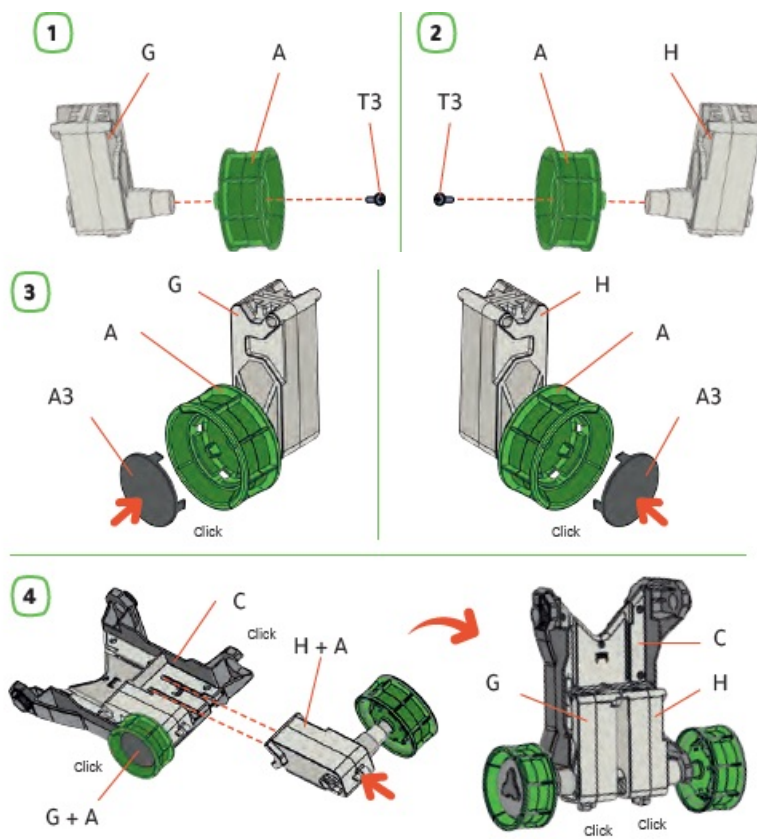




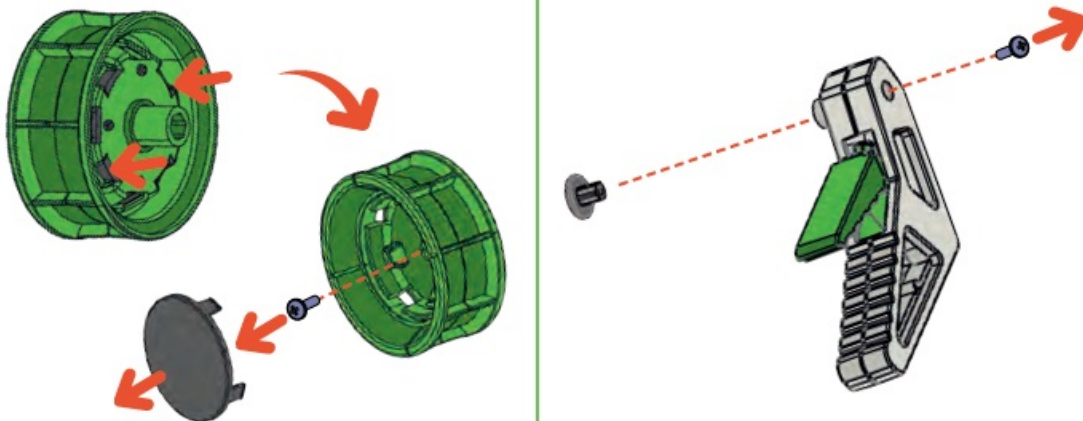




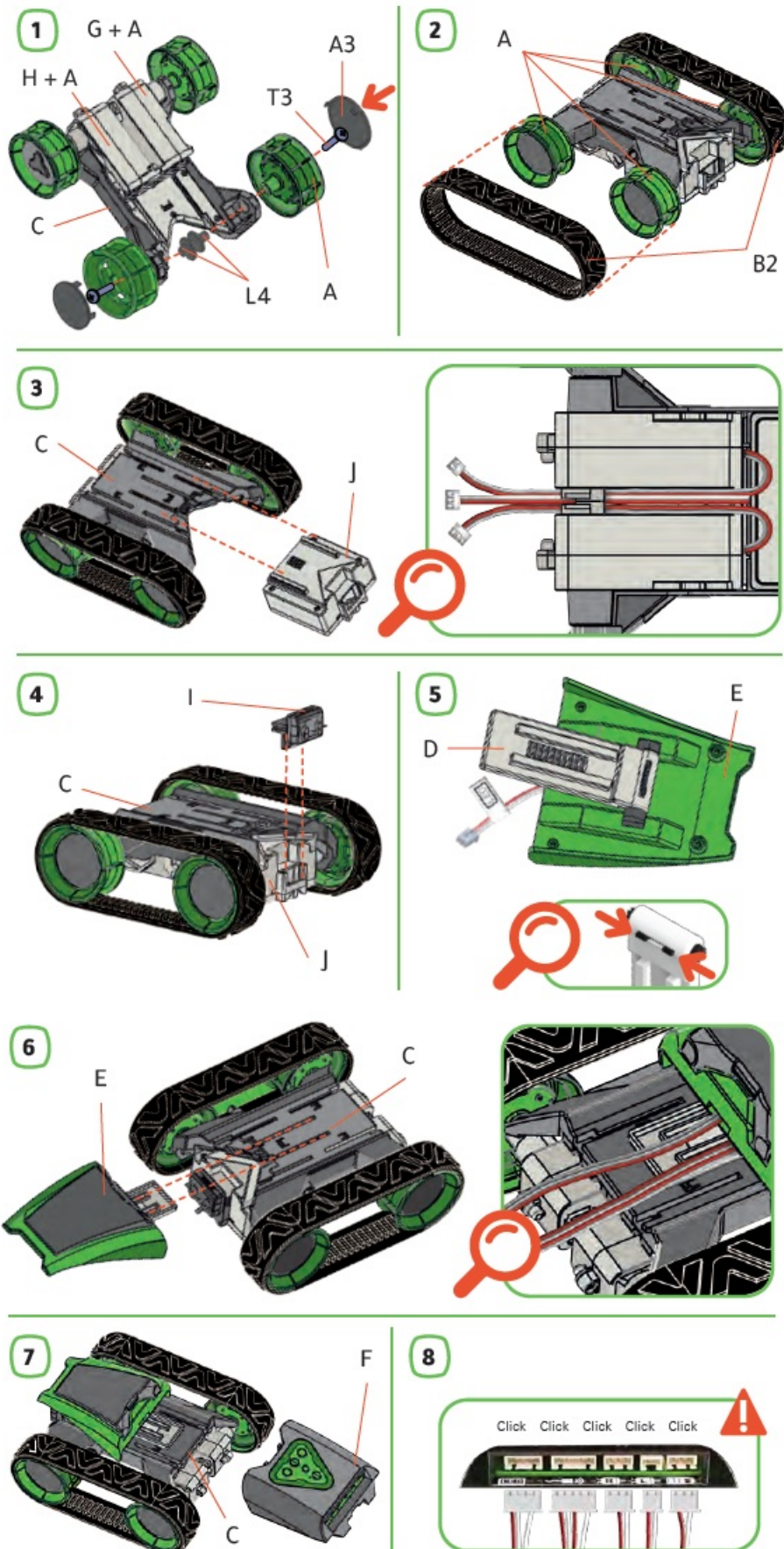




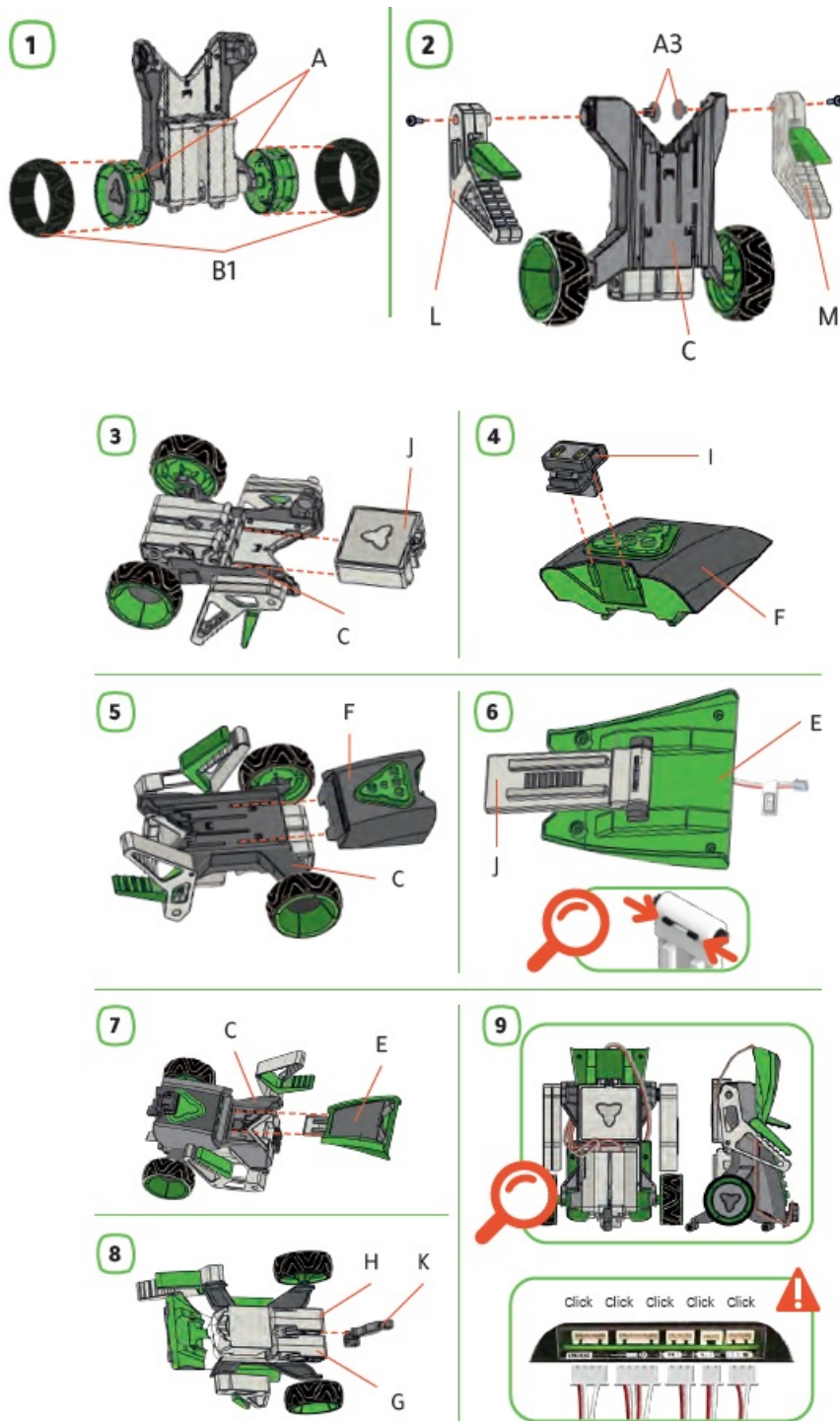
VEHICLE ROBOT
ROBOT VEHICLE



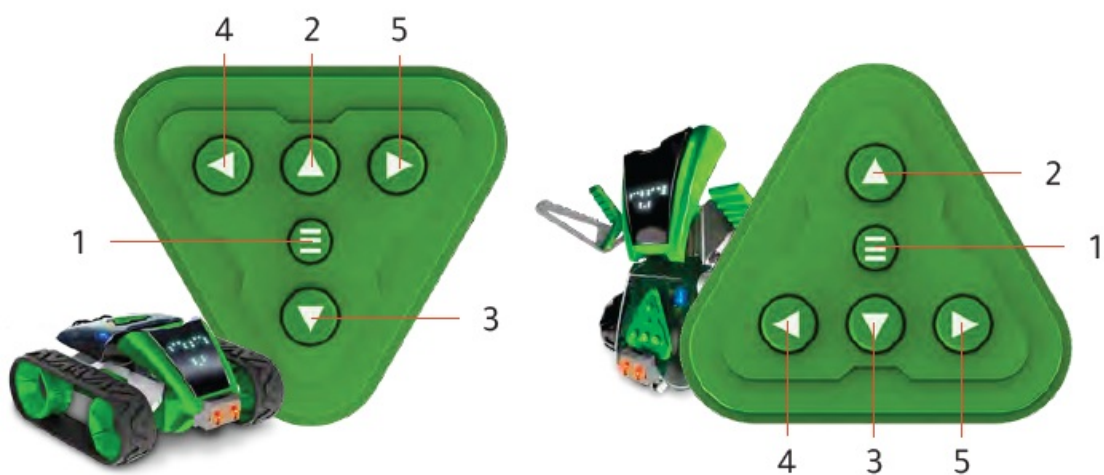
VEHICLE



ROBOT



HOW TO PLAY



ON/OFF button. Control button (direct control or program control).

- Forward
- Avance
- Backward
- Turn right
- Giro derecha

BASIC MODE

Turn on the robot with the central button. The robot will perform a dance with sounds as a greeting. To turn off the robot, keep the central button pressed down for a few seconds. The robot will make a sound, change its facial expression and shut down. There are two sort of control:

DIRECT CONTROL

By directly pressing the buttons on the central unit, the robot will perform the movements.

Always starts by default in direct control. Press the central button once to enter direct control, if you are in programming control. The robot beeps when it enters direct control mode.

ADVANCED MODE

APP USERS MANUAL



www.xtrembots.com/downloads

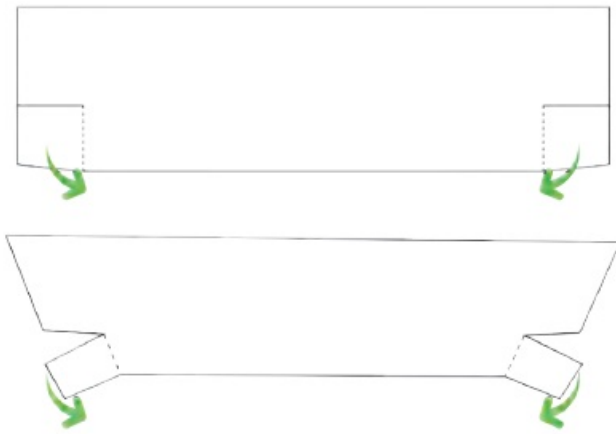
DOWNLOAD APP



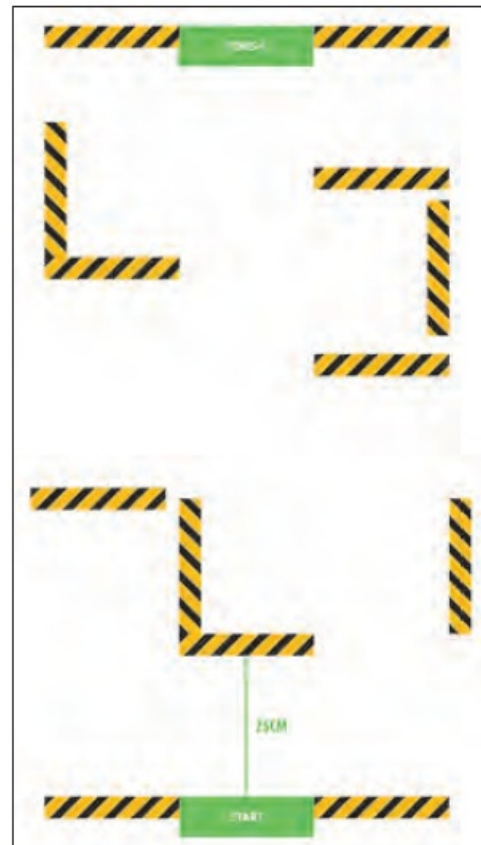
Scan the applicable QR code for your operating system, download and install the application, or search the App Store on your device: Mazzy Smart APP.

NOTE: APP is compatible from Android 4.0 or iOS 7.0 and up. Requires gyroscope.
Check the APP user's manual to learn how to use all its functions and do not stop the fun!

PLAY WITH MAZE PIECES



MAZE EXAMPLES



NOTE: the obstacle sensor is only available with APP mode.
Please keep this instructions for future reference.

FCC Radiation Exposure statement

This equipment complies with FCC radiation exposure limits set forth for an uncontrolled environment. This transmitter must not be co-located or operating in conjunction with any other antenna or transmitter.

Documents / Resources



[XTREM BOTS MAZZY Buildable and Programmable Robot Kit](#) [pdf] Instruction Manual 2A52R-A0002, 2A52RA0002, a0002, MAZZY Buildable and Programmable Robot Kit, MAZZY, Buildable and Programmable Robot Kit, Programmable Robot Kit, Robot Kit, Kit

References

- [Inicio - World Brands](#)
- [User Manual](#)

[Manuals+](#), [Privacy Policy](#)

This website is an independent publication and is neither affiliated with nor endorsed by any of the trademark owners. The "Bluetooth®" word mark and logos are registered trademarks owned by Bluetooth SIG, Inc. The "Wi-Fi®" word mark and logos are registered trademarks owned by the Wi-Fi Alliance. Any use of these marks on this website does not imply any affiliation with or endorsement.