



XTOOL MXHP002 Smart Control User Manual

[Home](#) » [XTOOL](#) » XTOOL MXHP002 Smart Control User Manual 



Contents

- 1 Statement
- 2 Safety first (important)
- 3 List of items
- 4 Specifications
- 5 Meet your smart control
- 6 Preparations
- 7 Use the device
- 8 Error code description
- 9 How to charge the Smart Control?
- 10 Declaration of conformity
- 11 FCC statement
- 12 Documents / Resources
 - 12.1 References

Statement

Thank you for choosing x Tool products!

If you use the product for the first time, read carefully all the accompanying materials of the product to improve your experience with it. If you do not use the product according to the instructions and requirements of the Manual, or mis-operate the product due to misunderstanding, etc., the Company shall bear no responsibility for any loss resulting therefrom.

The Company has collated the content of the Manual rigorously and carefully, but errors or omissions may remain.

The Company is committed to continuously improving product functions and service quality, and therefore reserves the right to change any product or software described in the Manual and the content of the Manual at any time.

The Manual is intended to help you use the product properly and does not include any description of hardware and software configuration. For product configuration, refer to the related contract (if any) and packing list, or consult your distributor. Images in the Manual are for reference only and the actual product may vary.

Protected by copyright laws and regulations, the Manual shall not be reproduced or transcribed in any way, or be transmitted on any wired or wireless network in any manner, or be translated into any language, or be modified in any way, such as content, image, or layout modification, without the prior written authorization of the Company.

The Company is committed to continuously improving the product and related materials. The product and the Manual are subject to change, and updates can be found at xtool.com.

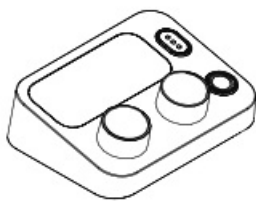
Safety first (important)

Read and get familiar with all safety precautions and measures before using this product. Strictly follow all safety precautions. Ensure that this product is properly assembled and is working properly.

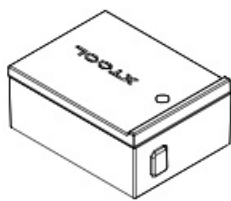
Follow the operating principles:

- Check the product for damage every time before you use it. Do not operate it in any way when any damage or defect is found.
- Ensure that the workspace is clean and flat.
- Do not leave the product unattended during operation. Pay attention to whether it is working properly.
- The machine works properly at the temperature of -10°C to 35°C and can be stored at the temperature of -10°C to 45°C . Do not operate it at a temperature lower than 0°C .

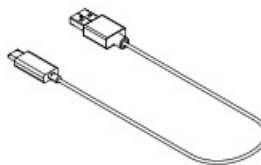
List of items



Smart control



Transceiver



USB cable

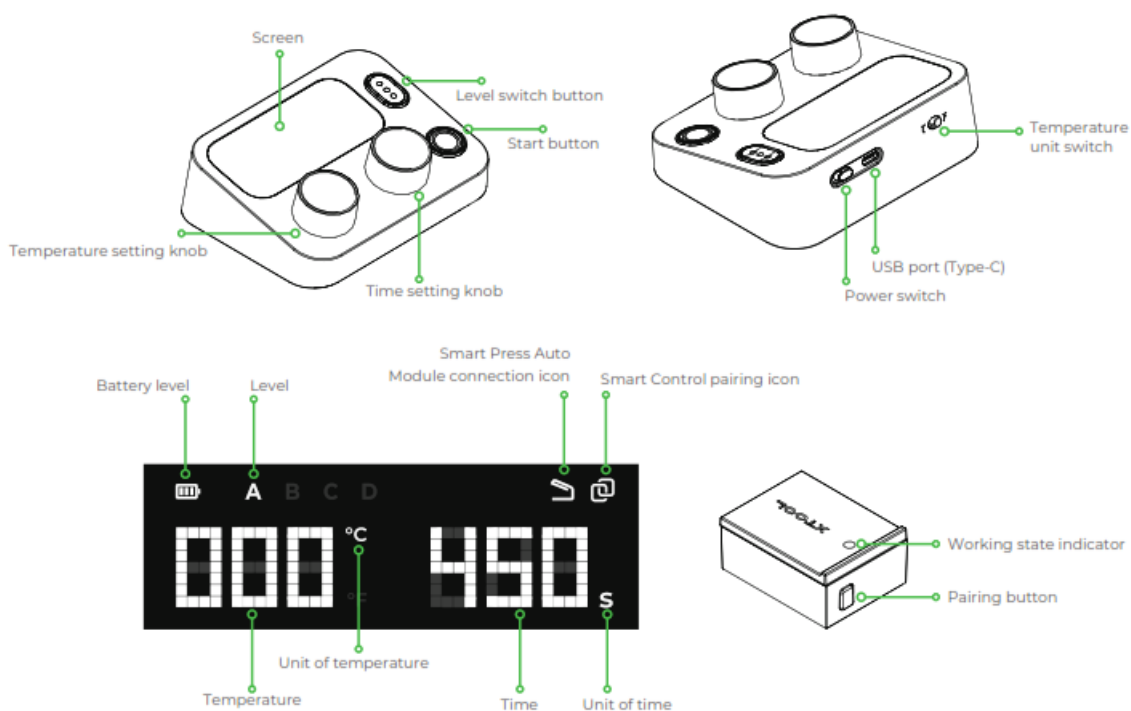


User manual

Specifications

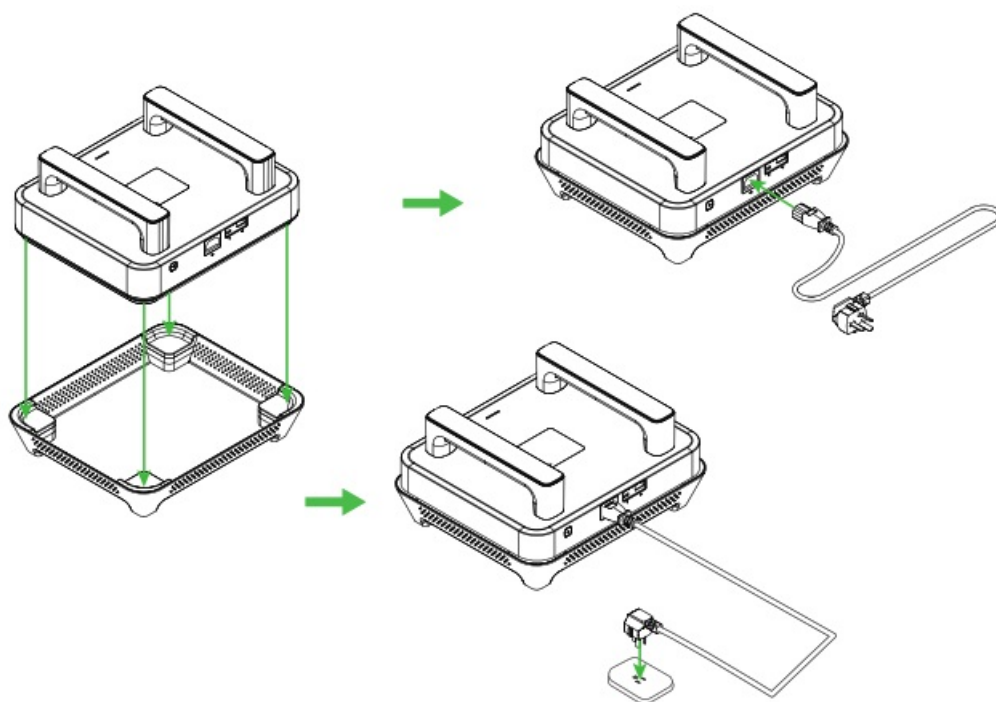
Size	117.2 mm x 91.4 mm x 35.1 mm
Temperature setting range	100°C ~ 205°C 212°F ~ 400°F
Time setting range	0s ~ 600s
x Tool Smart Control Transceiver	
Model	MXH-P002a-001
Input	5V 100mA
Maximum RF transmit power	2.4G(2420-2470MHz)< 20 dBm
FCC ID	2AH9Q-MXHP002A
IC	22796-MXHP002A

Meet your smart control

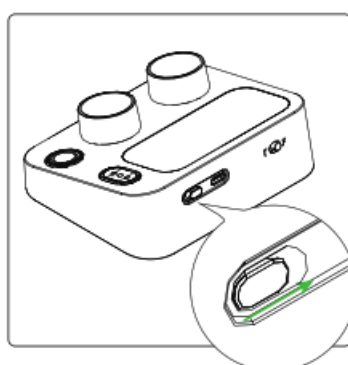


Preparations

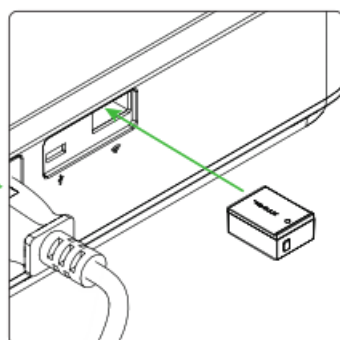
Connect to a power supply



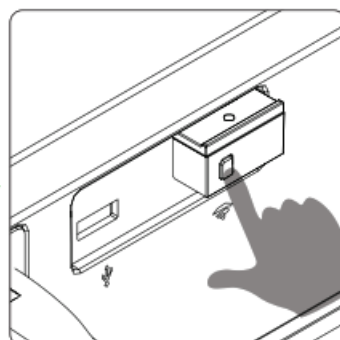
Pair with the Smart Control



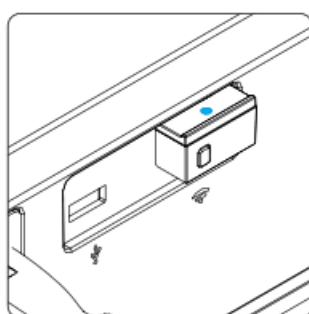
Toggle the switch to ON



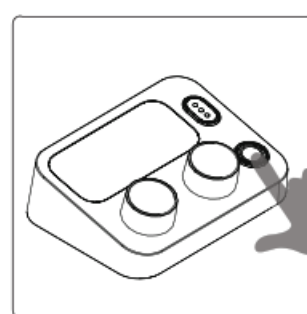
Insert the transceiver



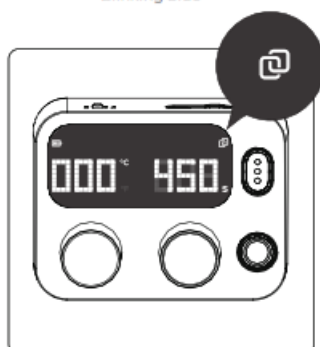
Hold down for 3s



Blinking blue



Hold down for 3s



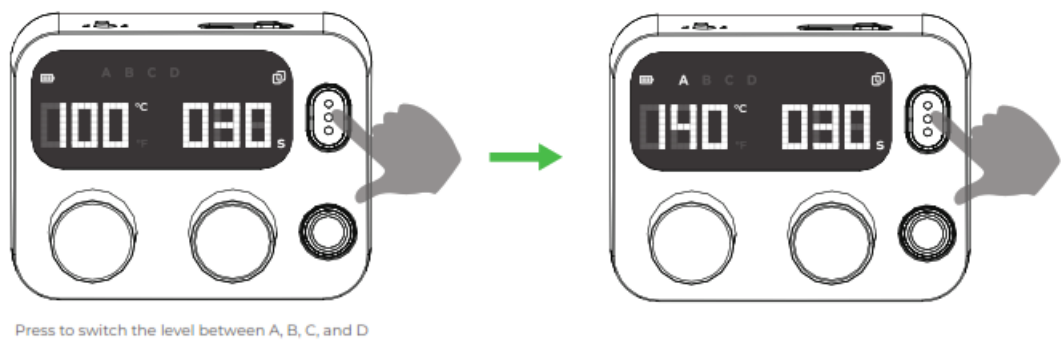
Blinking



Stopping blinking, pairing succeeded

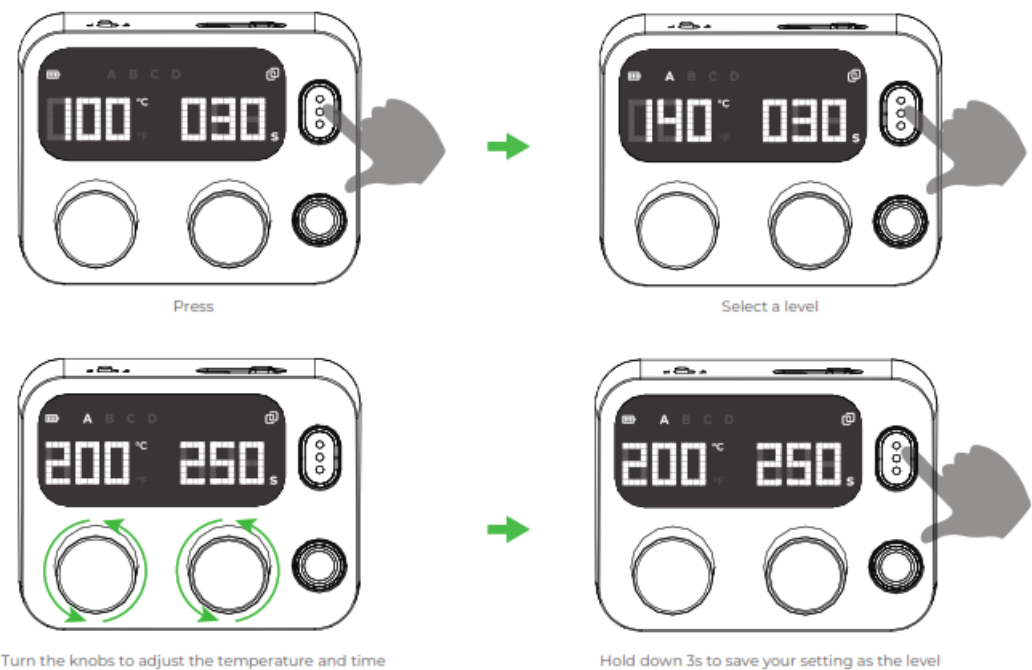
Smart Control settings

1. Switch between preset levels

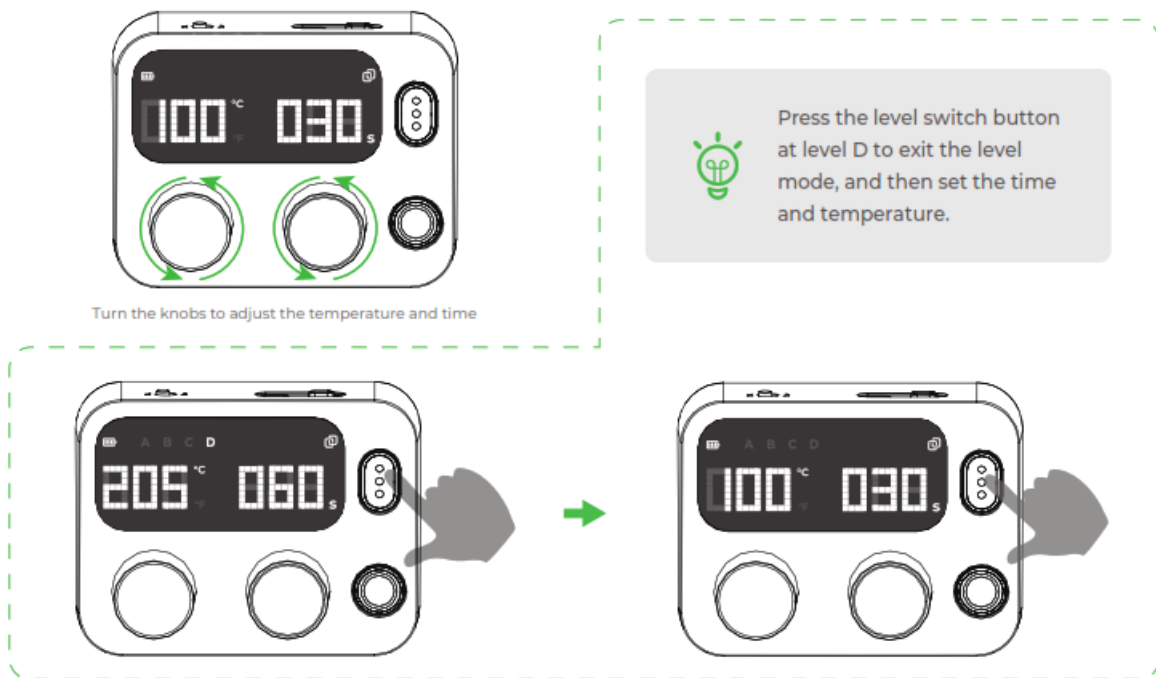


Level	Temperature	Time
A	140°C 285°F	30s
B	160°C 320°F	30s
C	195°C 385°F	50s
D	205°C 400°F	60s

2. Define a level yourself



3. Set the time and temperature directly



Use the device












The usage of the smart control may vary according to heat pressing devices.

Visit support.xtool.com or scan the following QR code to find details about how to use x Tool devices with the smart control.



<http://makeblock.com/cn/docs>

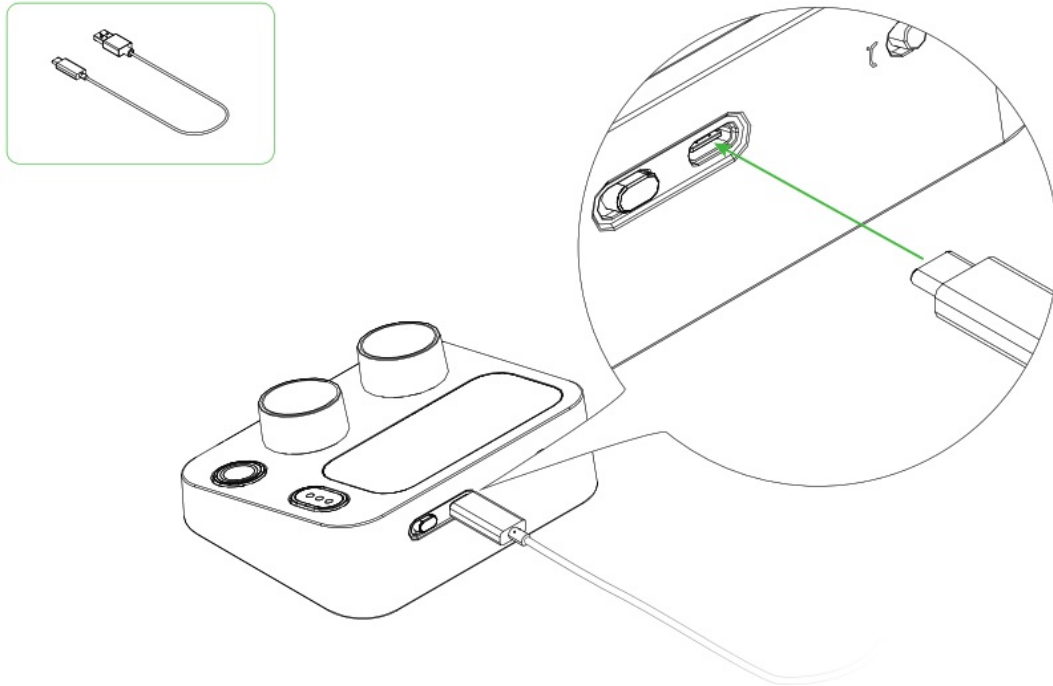
Error code description

Error code	Description
	Exceptions occur on the temperature sensor on the heating plate.
	The temperature sensor is damaged.
	The heating plate cannot be heated.
	The temperature of the heating plate does not go as expected.
	The temperature of the heating plate does not go as expected.
	Exceptions occur on the temperature sensor on the circuit board.
	The radiating fins are overheated.
	Exceptions occur when the heating plate is heated.
	Exceptions occur when the heating plate is heated.
	Exceptions occur when the heating plate is heated.
	Exceptions occur on the wireless chip.



If you see any error code displayed on the screen, contact x Tool team for help.

How to charge the Smart Control?



Declaration of conformity

Hereby, Makeblock Co., Ltd., declares that this product is in compliance with the essential requirements and other relevant provisions of Directive RED 2014/53/EU and the RoHS directive 2011/65/EU.

After-sales services

For technical support, contact us at support@xtool.com.

For more information about after-sales services, visit support.xtool.com.

FCC statement

This device complies with Part 15 of the FCC Rules. Operation is subject to the following two conditions:

1. This device may not cause harmful interference, and
2. This device must accept any interference received, including interference that may cause undesired operation.

Warning: Changes or modifications not expressly approved by the party responsible for compliance could void the user's authority to operate the equipment.

NOTE: This equipment has been tested and found to comply with the limits for a Class B digital device, pursuant to Part 15 of the FCC Rules. These limits are designed to provide reasonable protection against harmful interference in a residential installation. This equipment generates uses and can radiate radio frequency energy and, if not installed and used in accordance with the instructions, may cause harmful interference to radio communications.

However, there is no guarantee that interference will not occur in a particular installation. If this equipment does cause harmful interference to radio or television reception, which can be determined by turning the equipment off and on, the user is encouraged to try to correct the interference by one or more of the following measures:

- Reorient or relocate the receiving antenna.
- Increase the separation between the equipment and receiver.
- Connect the equipment to an outlet on a circuit different from that to which the receiver is connected.
- Consult the dealer or an experienced radio/TV technician for help.

FCC radiation exposure statement(For Smart Control Transceiver)

This device complies with Industry Canada licence-exempt RSS standard(s). Operation is subject to the following two conditions:

1. this device may not cause interference, and
2. this device must accept any interference, including interference that may cause undesired operation of the device.”



<p>此页不印制</p> <p>★为保持最佳打印效果，请尽量使用A4纸，且纸张厚度在70-90g之间。</p> <p>版权所有 © 2017 XTOOL</p> <p>翻印必究，违者必究。</p> <p>正文：12号宋体字，行距：24pt</p>	<p>XTOOL MXHP002 Smart Control [pdf] User Manual</p> <p>MXHP002, MXH-P002a-001, MXHP002 Smart Control, MXHP002, Smart Control</p>
---	--

- [!\[\]\(e6e72ec59f71b2fe33b5fdb552a8c883_img.jpg\) Smart Desktop Laser Cutter and Engraver | xTool Laser](#)