



xTool F1 Slide Extension User Manual

[Home](#) » [XTOOL](#) » xTool F1 Slide Extension User Manual 

xTool F1 Slide Extension



Contents

- 1 Statement
- 2 Safety first (important)
- 3 List of items
- 4 Use the slide extension
- 5 Use the material clamps
- 1
- 6 After-sales services
- 7 Declaration of conformity
- 8 Documents / Resources
 - 8.1 References
- 9 Related Posts

Statement

Thank you for choosing xTool products!

If you use the product for the first time, read carefully all the accompanying materials of the product to improve your experience with it. If you do not use the product according to the instructions and requirements of the Manual, or mis-operate the product due to misunderstanding, etc., the Company shall bear no responsibility for any loss resulting therefrom.

The Company has collated the content of the Manual rigorously and carefully, but errors or omissions may remain.

The Company is committed to continuously improving product functions and service quality, and therefore reserves the right to change any product or software described in the Manual and the content of the Manual at any time.

The Manual is intended to help you use the product properly and does not include any description of hardware and software configuration. For product configuration, refer to the related contract (if any) and packing list, or consult your distributor. Images in the Manual are for reference only and the actual product may vary.

Protected by copyright laws and regulations, the Manual shall not be reproduced or transcribed in any way, or be transmitted on any wired or wireless network in any manner, or be translated into any language, or be modified in any way, such as content, image, or layout modification, without the prior written authorization of the Company.

The Company is committed to continuously improving the product and related materials. The product and the Manual are subject to change, and updates can be found at xtool.com.

Safety first (important)

General safety

Read and get familiar with all safety precautions and measures before using this product. Strictly follow all safety precautions. Ensure that this product is properly assembled and is working properly.

Follow the operating principles:

- Check the product for damage every time before you use it. Do not operate it in any way when any damage or defect is found.

- Ensure that the workspace is clean and flat.
- Do not leave the product unattended during operation. Pay attention to whether it is working properly.
- Do not disassemble the product or change its structure in any way without authorization.
- Keep the product away from moisture when using or storing it to prevent rust and corrosion.
- The machine works properly at the temperature of 10 °C to 30°C. Do not operate it at a temperature lower than 0°C.

Laser safety

Generally, the laser is blocked by the device body and protective enclosure during operation. When you use xTool slide extension to process materials, the protective enclosure of xTool F1 cannot fully cover the object. You need to wear safety goggles that can shield your eyes from 455 nm and 1064 nm laser beams.

List of items

- Slide extension



- Movable ruler



- Material clamp 1



- Screwdriver



- USB cable



- Material clamp 2

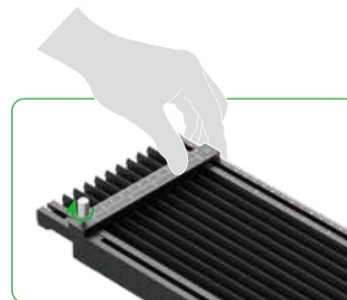
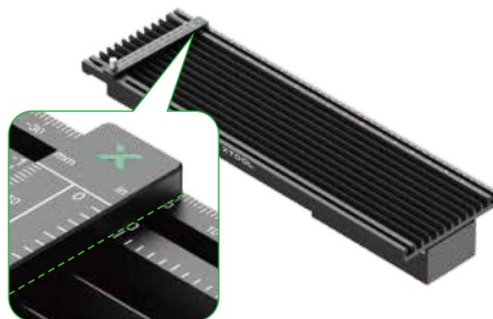
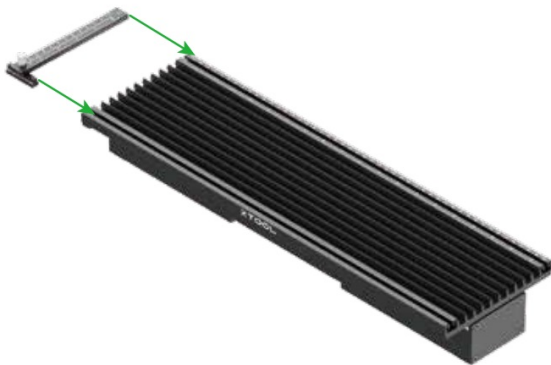
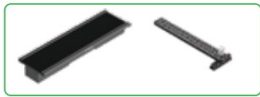


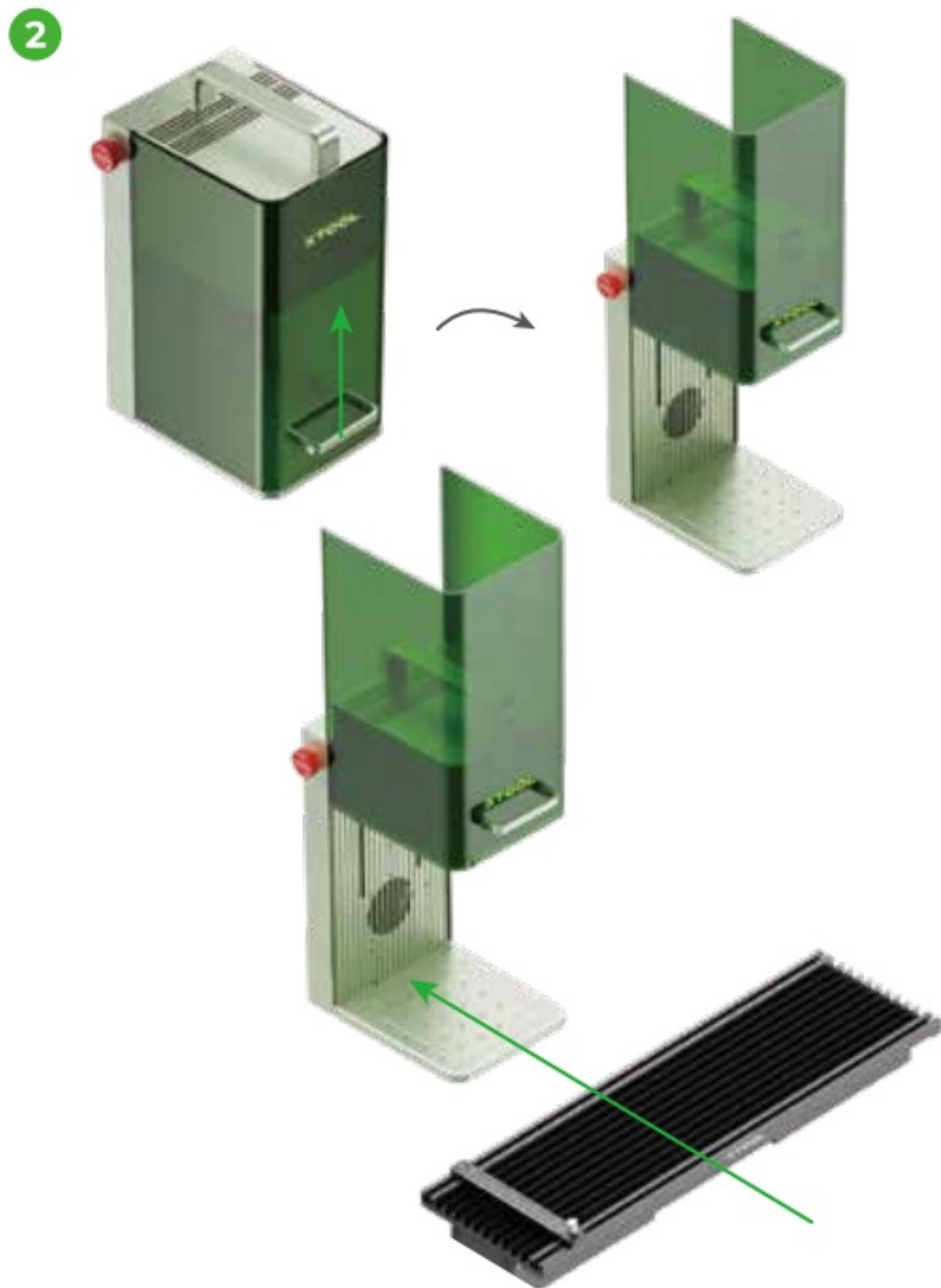
- User manual



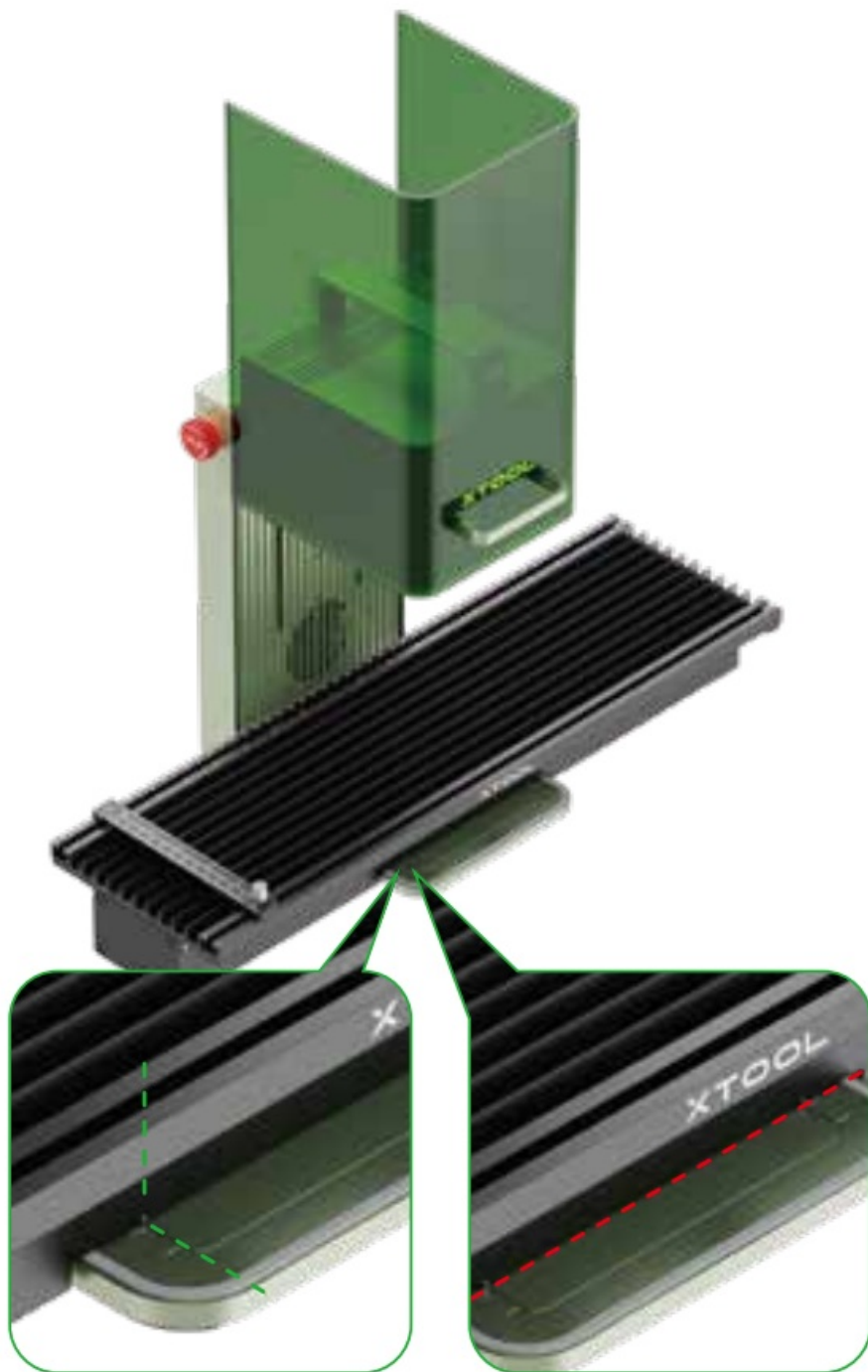
Use the slide extension

1





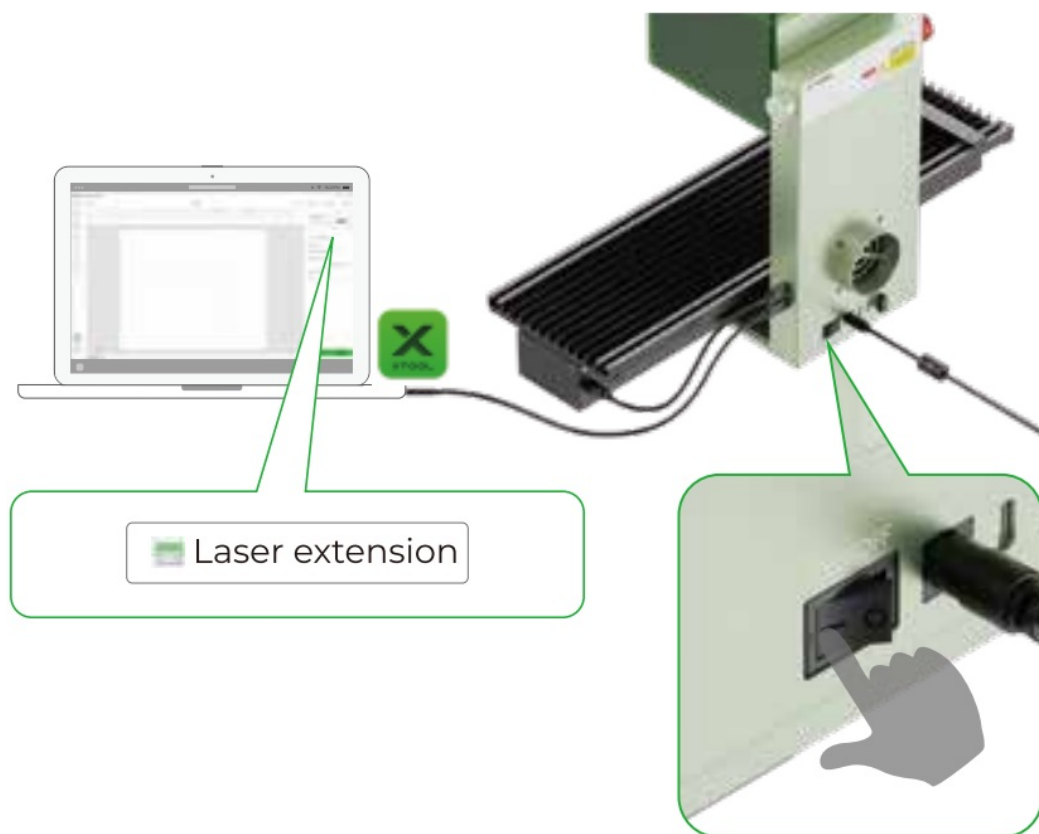
Align the vertical line on the side of the slide extension with the edge of the removable base plate of xTool F1, and align the side of the slide extension with the second line on the baseplate.




3

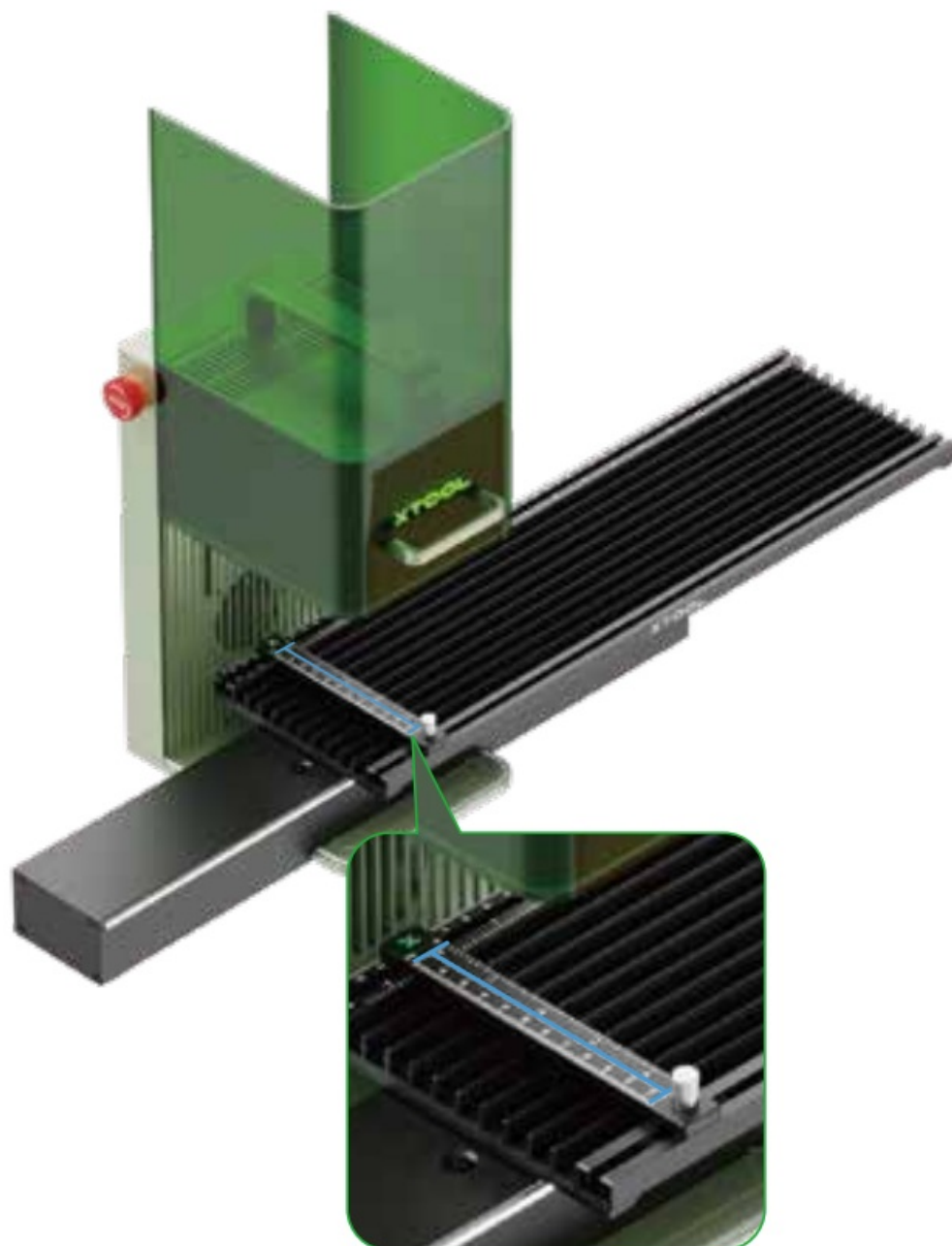


Start xTool Creative Space (XCS) and connect xTool F1 to XCS.

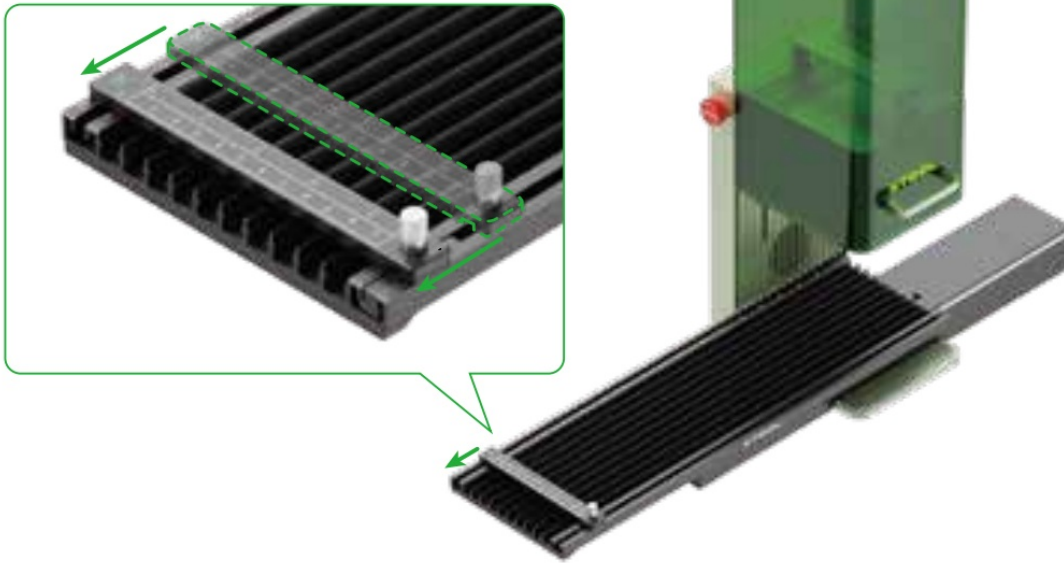


 Follow the calibration guide on XCS strictly to complete the laser calibration steps. For details about how to use XCS to operate xTool F1 and the slide extension for material processing, visit support.xtool.com.

4

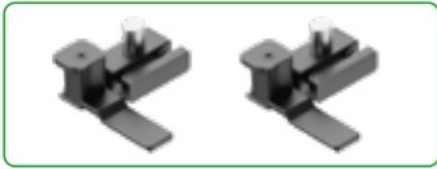


5

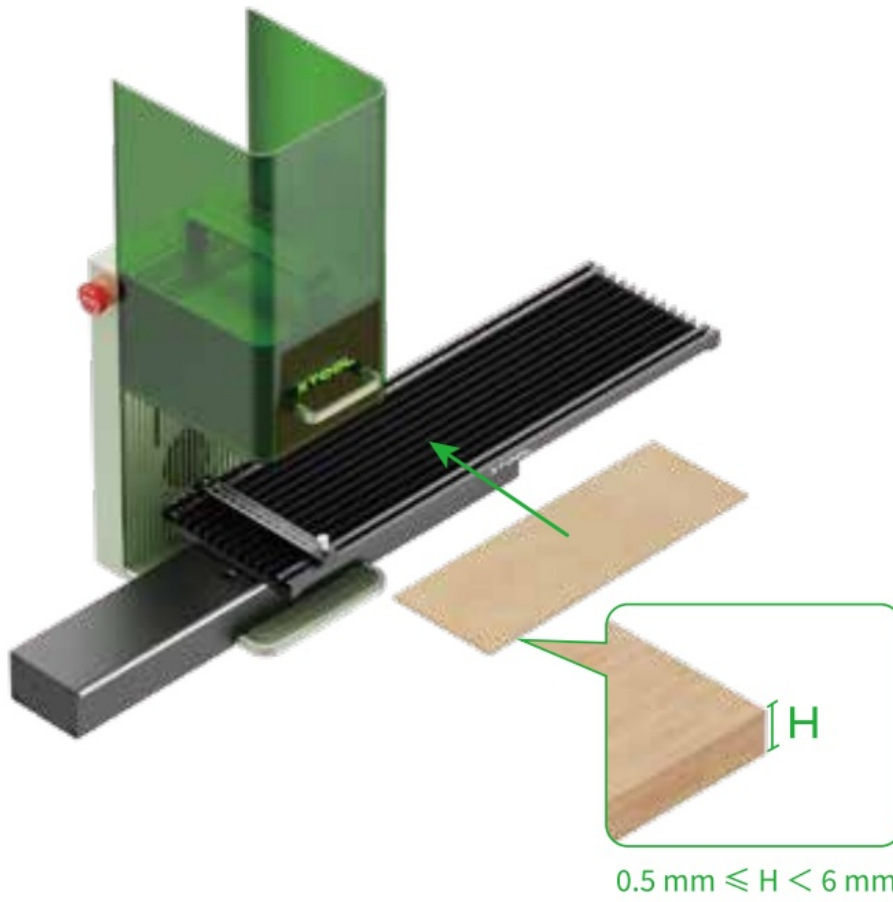


If you process the the pattern close to the left edge of the canvas, it is recommended that you move the ruler to the left of 0 scale to ensure better results.

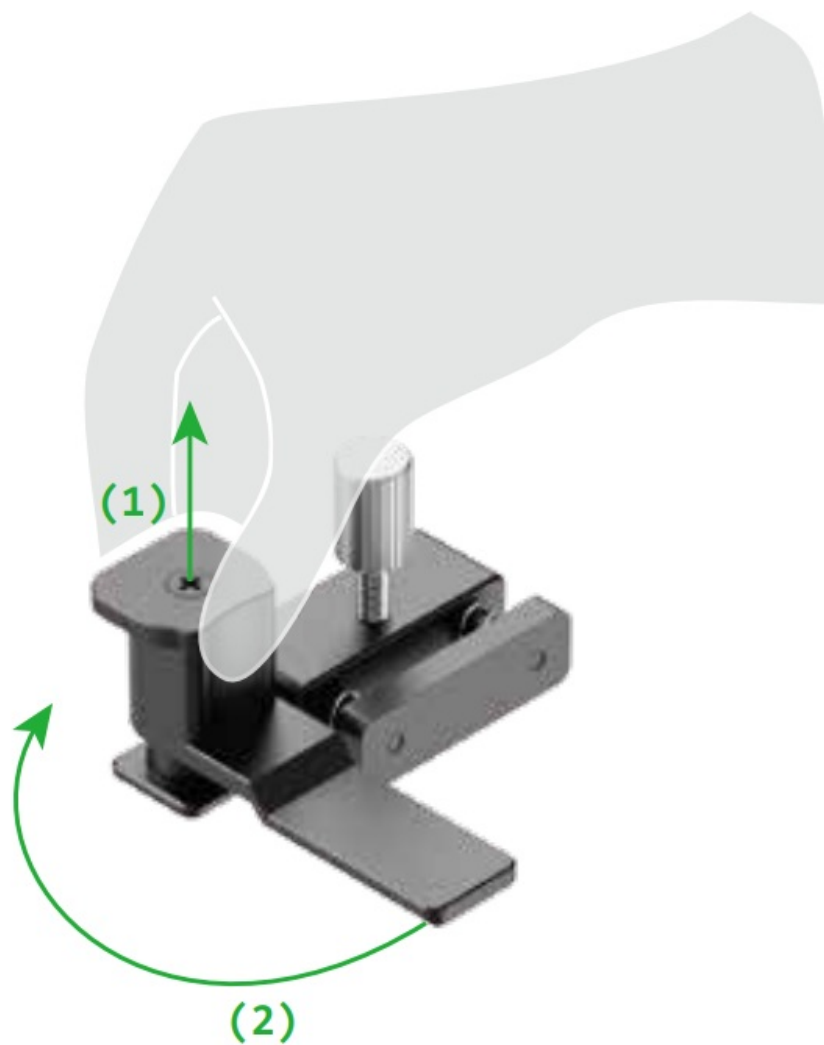
Use the material clamps 1



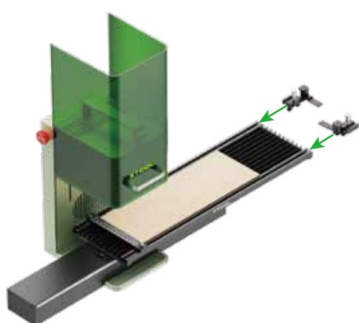
1



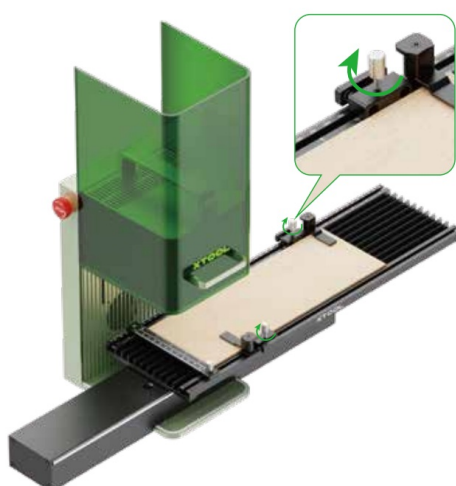
2



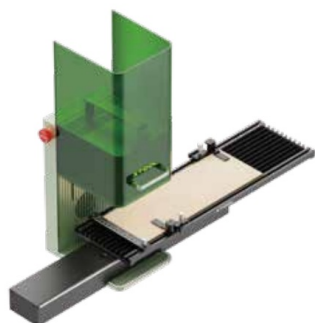
3



5



4



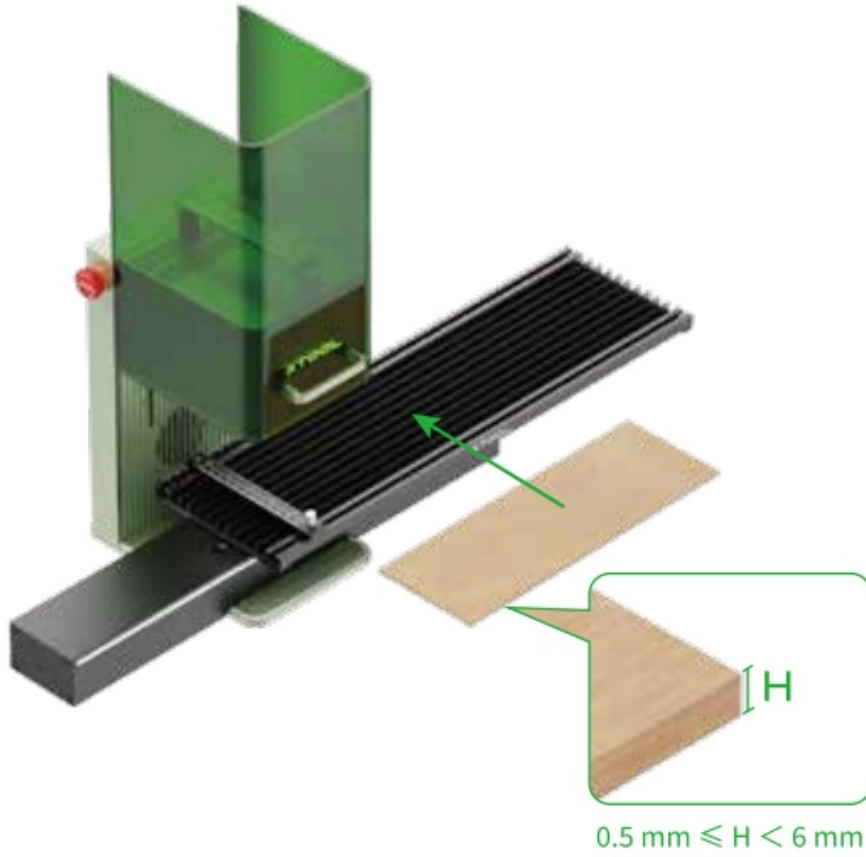
You can use the material clamp 1 to fix different size materials as required. Here are some examples.



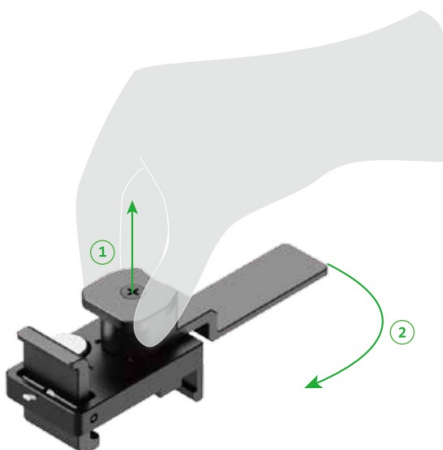
Use the material clamps 2



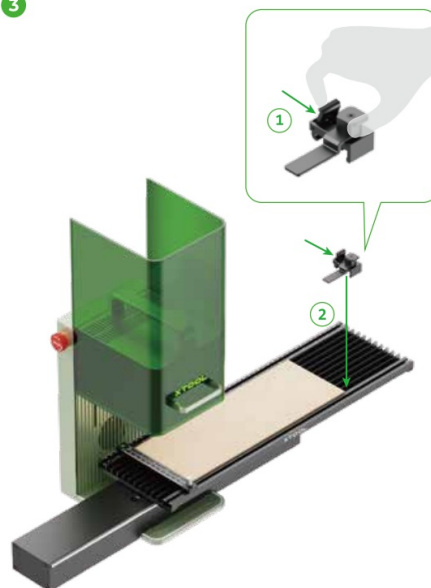
1

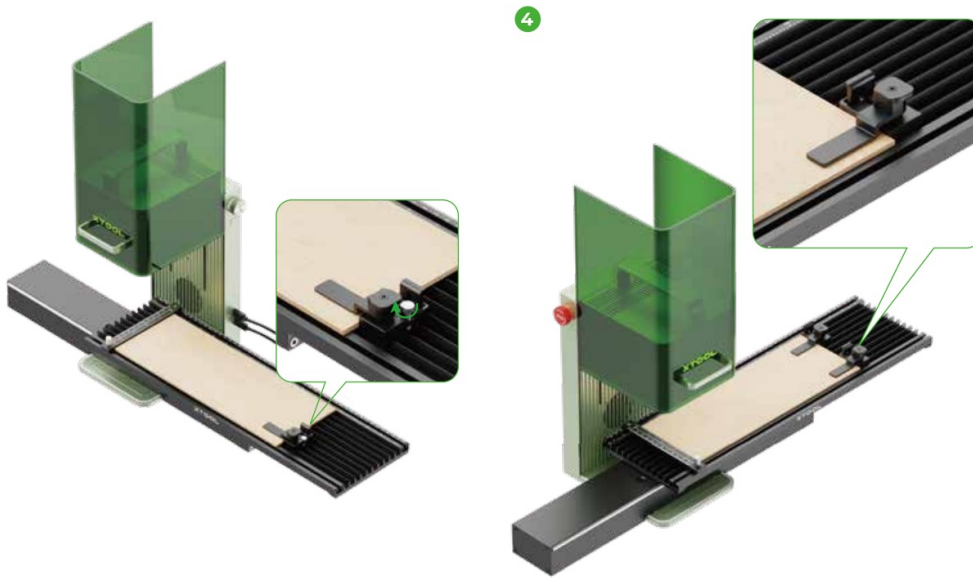


2



3





You can tighten the screw of the material clamp 2 clockwise to fix a material better.



You can use the material clamp 1 to fix different size materials as required. Here are some examples.



After-sales services

For technical support, contact us at support@xtool.com
For more information about after-sales services, visit support.xtool.com

Declaration of conformity

Hereby, Makeblock Co., Ltd., declares that this product is in compliance with the essential requirements and other relevant provisions of the RoHS directive 2011/65/EU.

FCC statement

This device complies with Part 15 of the FCC Rules. Operation is subject to the following two conditions:

(1) This device may not cause harmful interference, and (2) This device must accept any interference received, including interference that may cause undesired operation.

Warning: Changes or modifications not expressly approved by the party responsible for compliance could void the user's authority to operate the equipment.

NOTE: This equipment has been tested and found to comply with the limits for a Class B digital device, pursuant to Part 15 of the FCC Rules. These limits are designed to provide reasonable protection against harmful interference in a residential installation. This equipment generates uses and can radiate radio frequency energy and, if not installed and used in accordance with the instructions, may cause harmful interference to radio communications. However, there is no guarantee that interference will not occur in a particular installation. If this equipment does cause harmful interference to radio or television reception, which can be determined by turning the equipment off and on, the user is encouraged to try to correct the interference by one or more of the following measures:

- Reorient or relocate the receiving antenna.
- Increase the separation between the equipment and receiver.
- Connect the equipment to an outlet on a circuit different from that to which the receiver is connected.
- Consult the dealer or an experienced radio/TV technician for help.

FCC radiation exposure statement

This equipment complies with FCC radiation exposure limits set forth for an uncontrolled environment. This equipment should be installed and operated with a minimum distance of 20 cm between the radiator and your body.





Documents / Resources



[xTool F1 Slide Extension](#) [pdf] User Manual
F1 Slide Extension, F1, Slide Extension, Extension

References

-  [xTool Support Center](#)
-  [Smart Desktop Laser Cutter and Engraver | xTool Laser](#)
- [User Manual](#)

[Manuals+](#), [Privacy Policy](#)

This website is an independent publication and is neither affiliated with nor endorsed by any of the trademark owners. The "Bluetooth®" word mark and logos are registered trademarks owned by Bluetooth SIG, Inc. The "Wi-Fi®" word mark and logos are registered trademarks owned by the Wi-Fi Alliance. Any use of these marks on this website does not imply any affiliation with or endorsement.