

## XRAY XB8 Upgrade Kit Instructions

[Home](#) » [XRAY](#) » XRAY XB8 Upgrade Kit Instructions 



### XB8 Upgrade Kit Instructions



### SUPPLEMENTARY SHEET

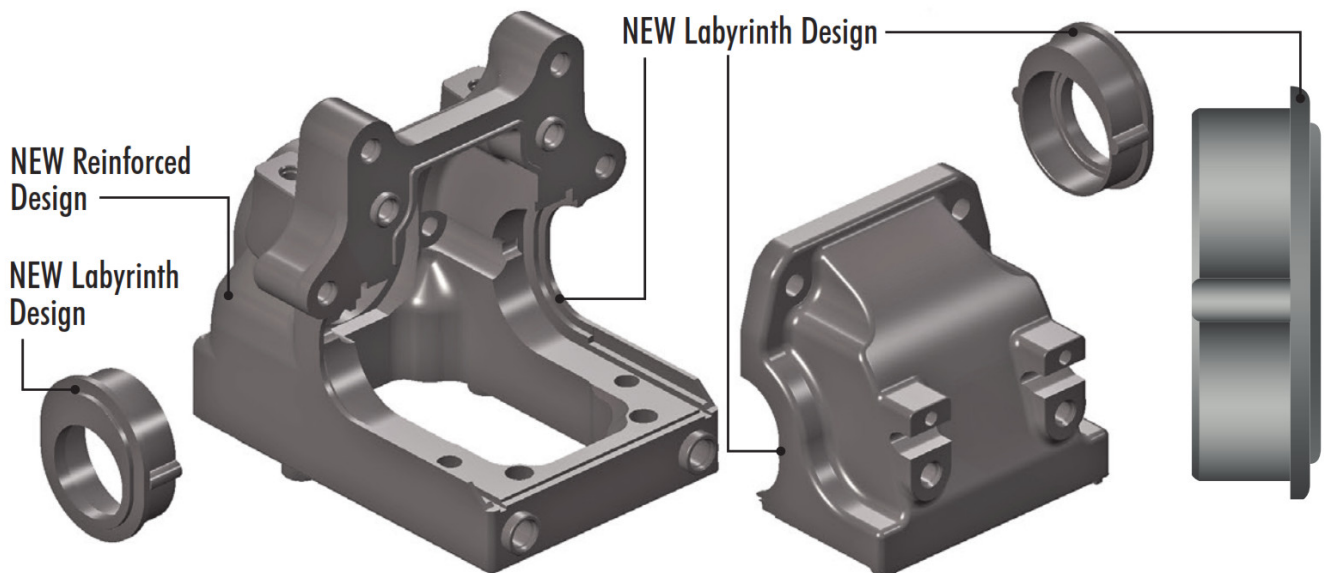
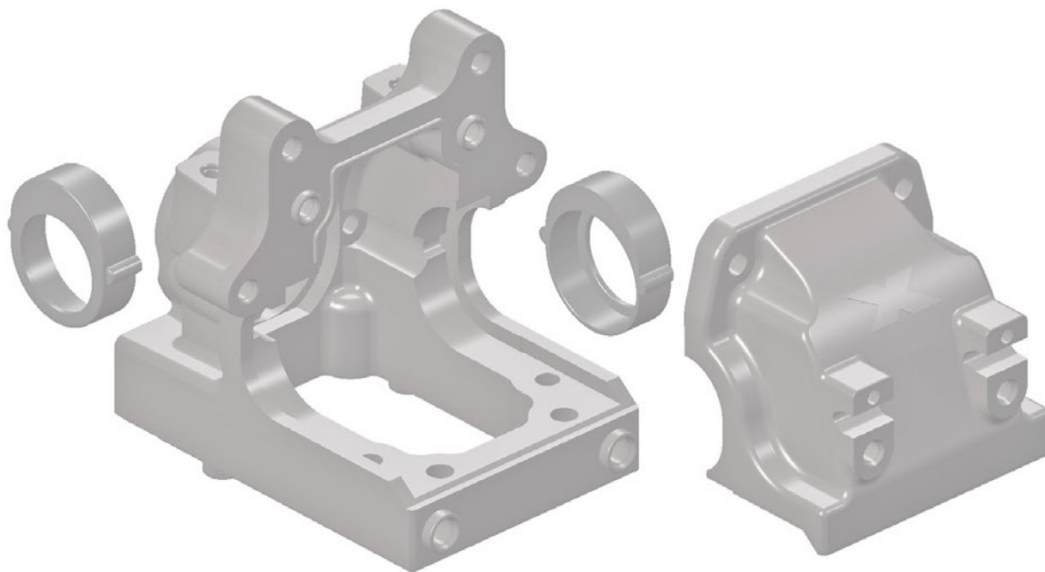
This Upgrade Kit includes reinforced Front & Rear Diff Bulkheads and Diff Height Inserts featuring new Labyrinth Dust Covers. Please follow these supplemental instructions during related assembly steps.

## Contents

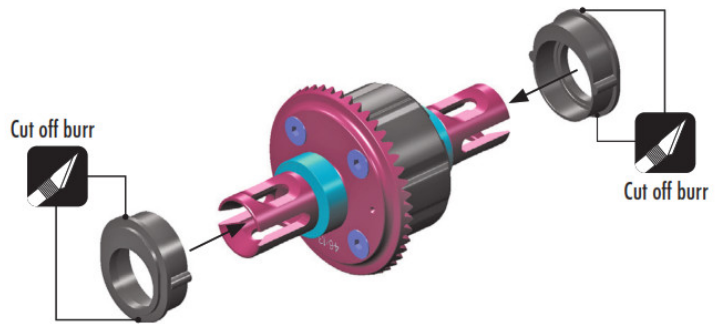
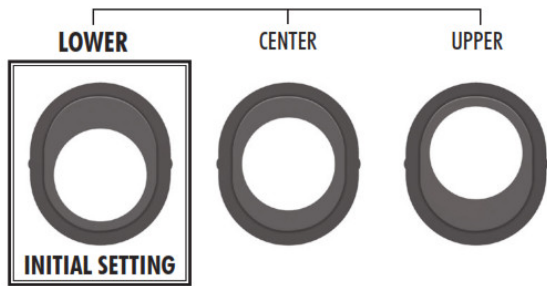
- 1 XB8 Upgrade Kit
- 2 BALL-BEARING HUB POSITIONS
- 3 REMOVING THE DIFFERENTIAL WHEN CAR IS ASSEMBLED
- 4 INSTALLING THE DIFFERENTIAL WHEN CAR IS ASSEMBLED
- 5 Documents / Resources

## XB8 Upgrade Kit

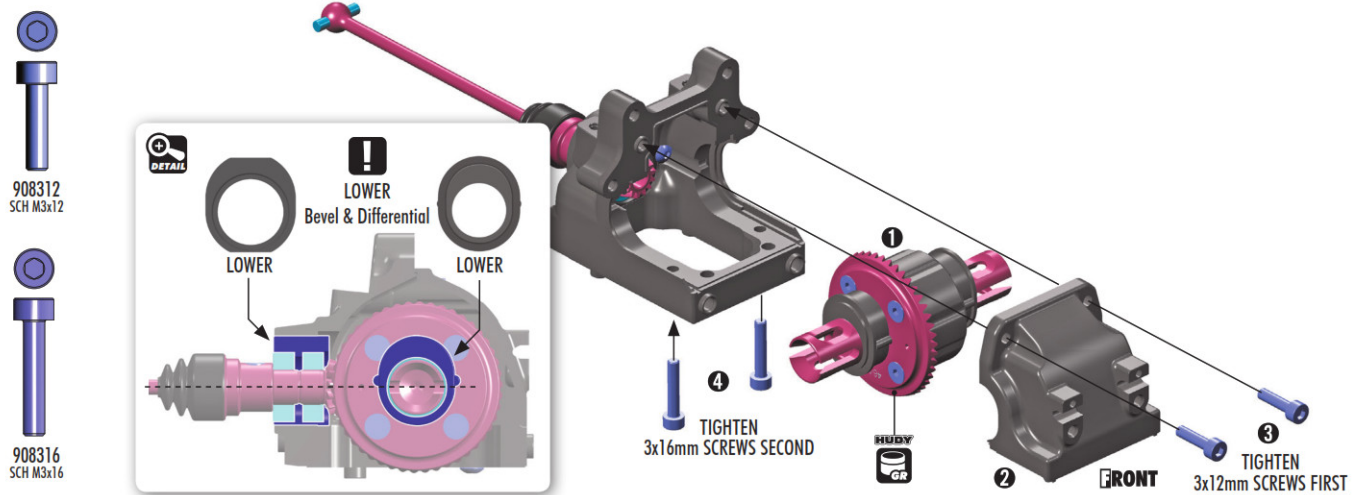
### PREVIOUS BULKHEADS & HUBS



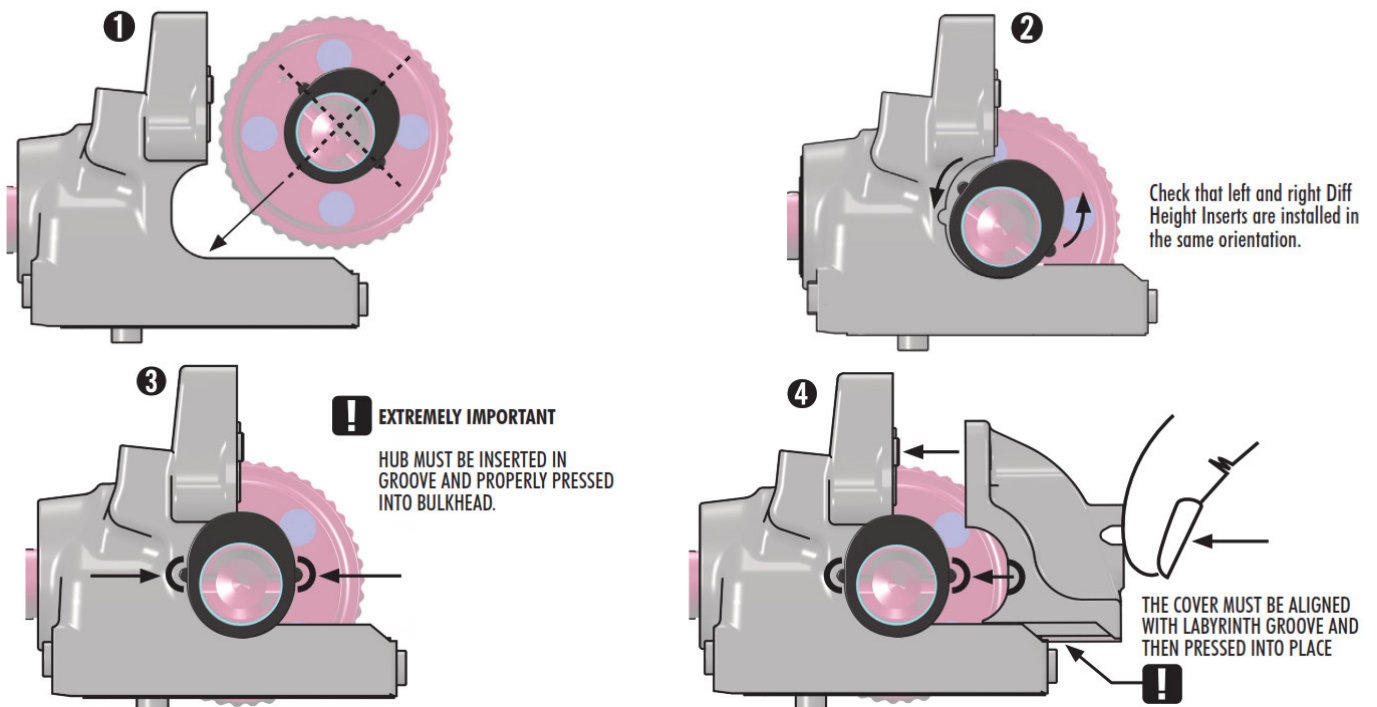
### BALL-BEARING HUB POSITIONS



**!** During assembly, there may be some differential movement in the bulkhead. In particular, DO NOT check mesh or diff movement without installing suspension holders and securing bulkhead to the chassis. All parts have specifically designed tolerances, and only when the car is fully assembled will it have the proper amount of play where necessary. Check for free movement of all rotational driveline components once the driveline and suspension are completely assembled, as well as non-binding operation of the suspension components.



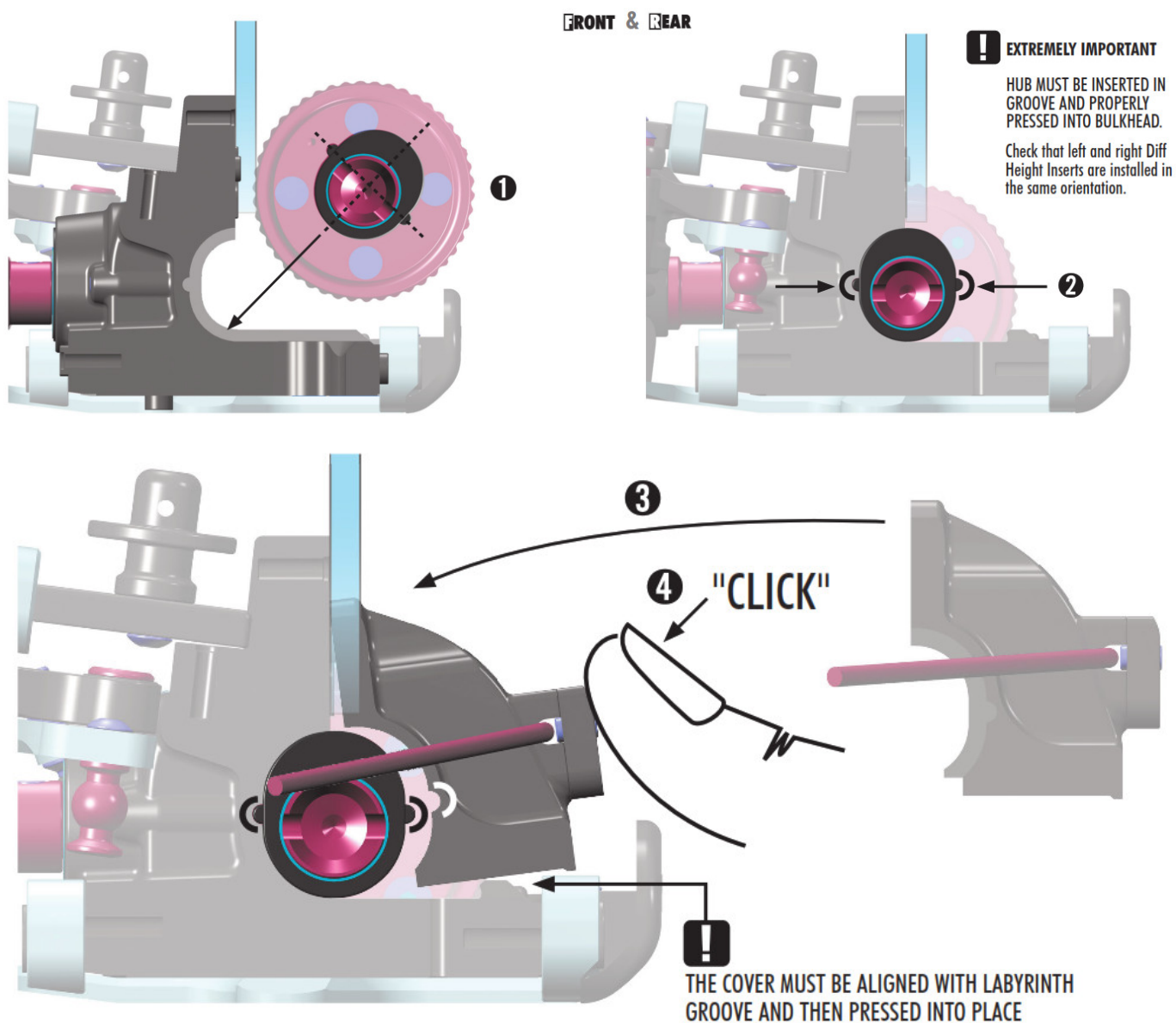
## INSTALLING THE DIFFERENTIAL WHILE FIRST TIME BUILDING THE CAR



## REMOVING THE DIFFERENTIAL WHEN CAR IS ASSEMBLED



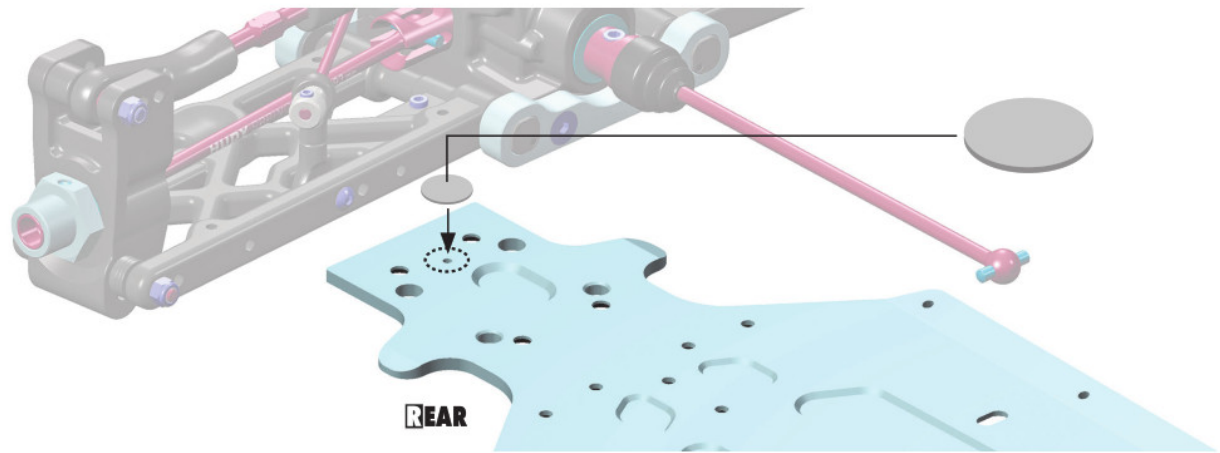
## INSTALLING THE DIFFERENTIAL WHEN CAR IS ASSEMBLED



## TIGHTEN ALL THE SCREWS

- Gearbox Cover Upper Screws
- Gearbox Cover Lower Screws
- Anti-roll Bar Linkage

– Shock Absorbers



**TIP** To prevent dust apply one of the included stickers on the rear part of the chassis to cover the center balancing hole.

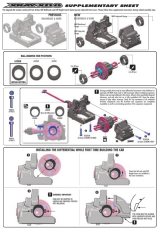




In case you use more droop than 104-105mm then by certain set-up configurations of the car the front upper arm may hit the servo saver. This has no influence on the handling of the car however you may want to modify the bottom of the front upper arm to avoid it hitting the servo saver.

**XRAY XB8**

**Documents / Resources**



[XRAY XB8 Upgrade Kit](#) [pdf] Instructions  
XB8 Upgrade Kit, XB8, Upgrade Kit, Kit