



xpr XS Series Mifare Reader and Keypad with Mifare Installation Guide

[Home](#) » [xpr](#) » xpr XS Series Mifare Reader and Keypad with Mifare Installation Guide 



**Xsmart Range: Mifare Reader & Keypad with Mifare
INSTALLER'S MANUAL
PRODUCT REFERENCES**

Contents

- [1 Series Mifare Reader and Keypad with Mifare](#)
- [2 SPECIFICATIONS](#)
- [3 MOUNTING](#)
- [4 FERRITE CORE MOUNTING](#)
- [5 TERMINALS](#)
- [6 CABLING](#)
- [7 SIGNALISATION](#)
- [8 ACCESSORIES \(OPTIONAL\)](#)
- [9 Documents / Resources](#)
 - [9.1 References](#)
- [10 Related Posts](#)

Series Mifare Reader and Keypad with Mifare



– XS-K-MF-W – XS-K-MF-W-X
– XS-K-MF-RS – XS-K-MF-RS-X



– XS-MF-W – XS-MF-W-X
– XS-MF-RS – XS-MF-RS-X

Xsecure®



SPECIFICATIONS

WS4

XS-MF-RS XS-MF-RS-X



<https://www.xprgroup.com/products/xs-mf-rs/>

XS-K-MF-RS XS-K-MF-RS-X



<https://www.xprgroup.com/products/xs-k-mf-rs/>

EWS

XS-MF-W XS-MF-W-X



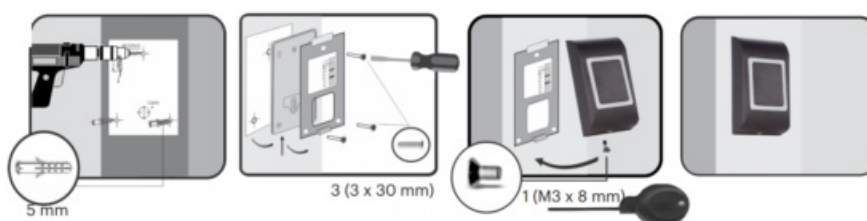
<https://www.xprgroup.com/products/xs-mf-w/>

XS-K-MF-W XS-K-MF-W-X

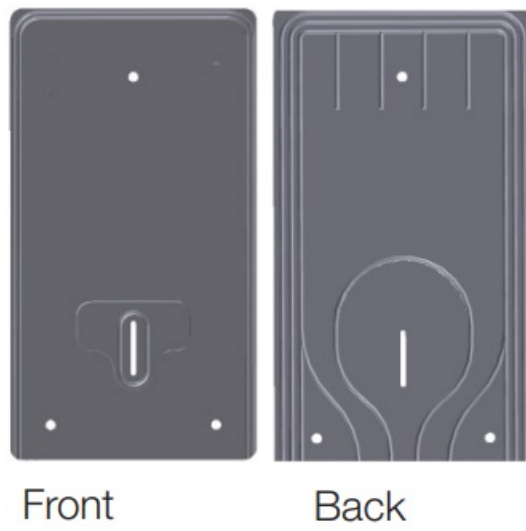


<https://www.xprgroup.com/products/xs-k-mf-w/>

MOUNTING



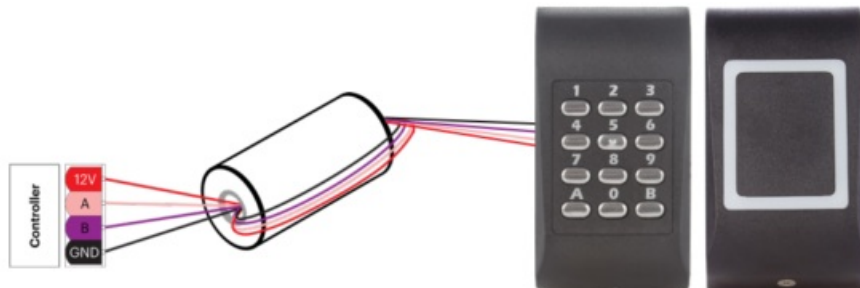
Rubber gasket



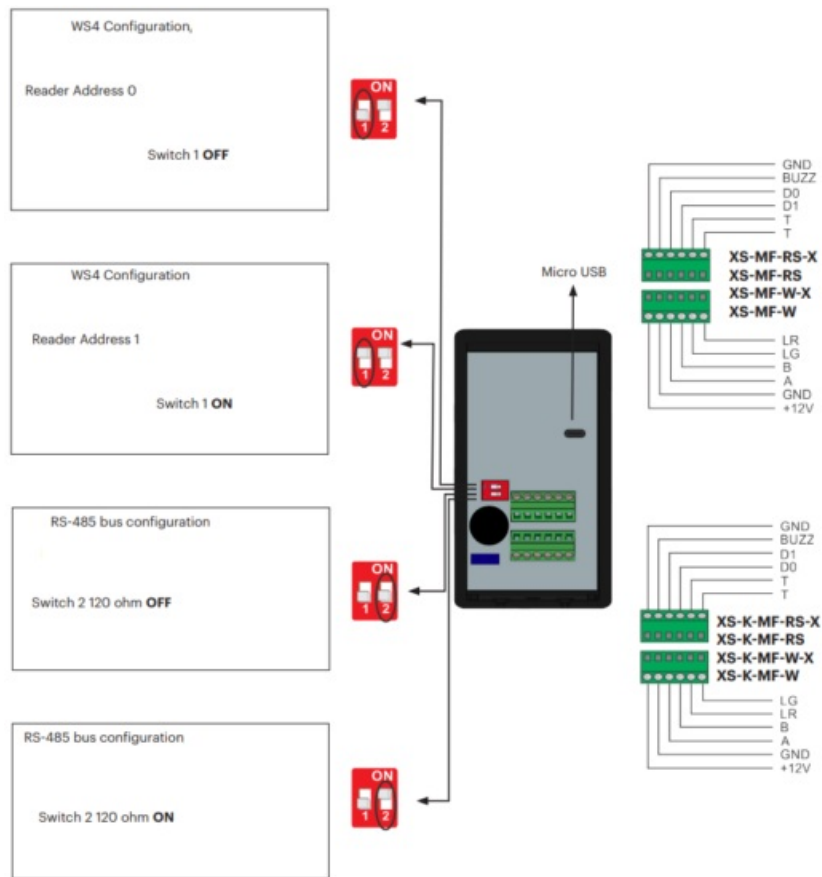
MOUNTING WITH MT-SPACER



FERRITE CORE MOUNTING



TERMINAL BLOCKS AND DIPSWITCH



TERMINALS

TERMINALS	DESCRIPTION	WS4 CONNECTION	EWS CONNECTION
	RS-485 line	RS-485 A (+)	X
B	RS-485 line	RS-485 B – ()	X
DO	Output	X	Wiegand DO
D1	Output/	X	Wiegand D1
LG	Input	X	Green LED Input
LR	Input	X	Red LED Input
BUZZ	Input	X	X
+12 V	Power Supply	✓	✓
GND	Ground	✓	✓
T	Tamper	X	✓
T	Tamper	X	✓

CABLING

CABLING	WS4 Configuration	EWS Configuration
Max length	80 m	150 m
CABLING	Multiconductor cable 2 twisted pair with shielding	Untwisted, shielded, 0.22 mm ² min. For longer distance above 20 m use larger diameter.

SIGNALISATION

SIGNALISATION	DESCRIPTION	XS-MF-RS-X & XS-MF-RS XS-K-MF-RS-X & XS-K-MF-RS
Reader OFF-Line	Reader lost communication with controller	Red LED Blinks fast

DEFAULT CONFIGURATIONS

Online solution: XS-MF-W & XS-K-MF-W factory setting is to read CSN and Wiegand 34 bit. XS-MF-W-X & XS-K-MF-W-X factory setting is to read Xsecure credentials and Wiegand 34 bit. In order to change the default settings, please use the PROS CS software.

Web server solution: XS-MF-RS & XS-K-MF-RS factory setting is to read CSN. XS-MF-RS-X & XS-K-MF-RS-X factory setting is to read Xsecure credentials. In order to get the configuration software (Product Manager) and change the default settings, please contact us at: info@xprgroup.com

ACCESSORIES (OPTIONAL)



MC-MINI
Mini Metal Cover



USP-BK
Mounting Plate



MT-SPACER

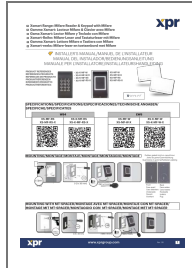
Surface Mount Spacer

This product herewith complies with requirements of EMC directive 2014/30/EU, Radio Equipment Directive 2014/53/EU.

In addition it complies with RoHS2 directive 2011/65/EU and RoHS3 Directive 2015/863/EU.

www.xprgroup.com

Documents / Resources



[xpr XS Series Mifare Reader and Keypad with Mifare \[pdf\]](#) Installation Guide
XS-K-MF-W, XS-K-MF-W-X, XS-K-MF-RS, XS-K-MF-RS-X, XS-MF-W, XS-MF-W-X, XS-MF-RS,
XS-MF-RS-X, XS Series Mifare Reader and Keypad with Mifare, XS Series, Mifare Reader and
Keypad with Mifare, Reader and Keypad with Mifare, Keypad with Mifare, Mifare

References

- [XPR Group - Safe access systems provider](#)
- [User Manual](#)

Manuals+, Privacy Policy

This website is an independent publication and is neither affiliated with nor endorsed by any of the trademark owners. The "Bluetooth®" word mark and logos are registered trademarks owned by Bluetooth SIG, Inc. The "Wi-Fi®" word mark and logos are registered trademarks owned by the Wi-Fi Alliance. Any use of these marks on this website does not imply any affiliation with or endorsement.