

xpr XS Series Mifare
Reader and Keypad



xpr XS Series Mifare Reader and Keypad Installation Guide

[Home](#) » [xpr](#) » xpr XS Series Mifare Reader and Keypad Installation Guide 

Contents

- [1 xpr XS Series Mifare Reader and Keypad](#)
- [2 Product Specifications](#)
- [3 Product Usage Instructions](#)
- [4 Frequently Asked Questions](#)
- [5 SPECIFICATIONS](#)
- [6 MOUNTING](#)
- [7 FERRITE CORE MOUNTING](#)
- [8 TERMINAL BLOCKS AND DIPSWITCH](#)
- [9 TERMINALS](#)
- [10 CABLING](#)
- [11 SIGNALISATION](#)
- [12 DEFAULT CONFIGURATIONS](#)
- [13 ACCESSORIES \(OPTIONAL\)/ ACCESSOIRES \(EN OPTION\)](#)
- [14 Documents / Resources](#)
 - [14.1 References](#)
- [15 Related Posts](#)



xpr XS Series Mifare Reader and Keypad



Product Specifications

- Product Name: Xsmart Range Mifare Reader & Keypad
- Model Numbers:
 - XS-K-MF-W
 - XS-K-MF-W-X
 - XS-K-MF-RS
 - XS-K-MF-RS-X
 - XS-MF-W
 - XS-MF-W-X
 - XS-MF-RS
 - XS-MF-RS-X
- Mounting: Wall mounting with rubber gasket
- Dimensions: 5 mm thickness, various screw sizes for mounting
- Communication: Micro USB, RS-485 bus configuration
- Cable Type: Multiconductor cable with shielding
- LED Indicators: OFFLINE status indicated by a rapidly blinking red LED

Product Usage Instructions

Mounting Instructions:

1. Place the device on the desired location on the wall.
2. Use the provided rubber gasket to ensure a secure fit.
3. Secure the device using the specified screws and follow the vfront/back indications.

Connection Setup:

Connect the device using the Micro USB port and configure the RS-485 bus according to the provided specifications.

Cable Installation:

Use the recommended multiconductor cable with shielding for proper communication. Ensure correct wiring and distances for optimal performance.

Frequently Asked Questions

Q: What does the rapidly blinking red LED indicate?

A: The red LED blinking rapidly indicates that the device is in an OFFLINE status, meaning it has lost communication with the controller.

Q: How should I address an OFFLINE status on the device?

A: To address an OFFLINE status, check the communication connections, reset the device if necessary, and ensure proper configuration settings.

Q: Can I use a different type of cable for installation?

A: It is recommended to use the specified multiconductor cable with shielding to maintain proper communication and performance of the device.

Xsmart Range: Mifare Reader & Keypad with Mifare



- XS-K-MF-W
- XS-K-MF-W-X
- XS-K-MF-RS
- XS-K-MF-RS-X

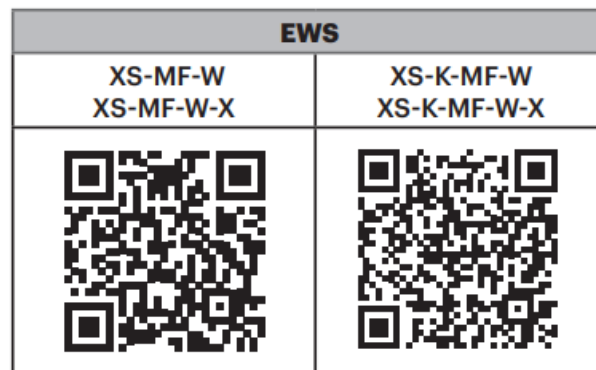
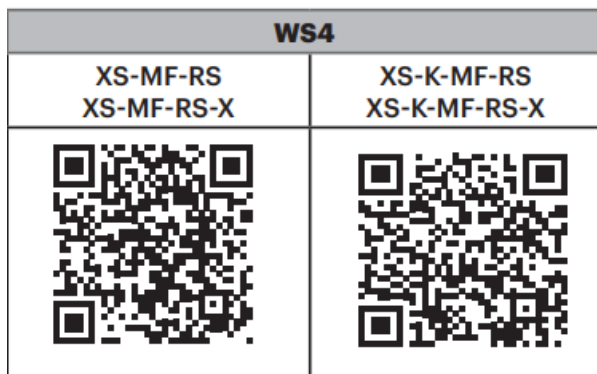


- XS-MF-W
- XS-MF-W-X
- XS-MF-RS
- XS-MF-RS-X

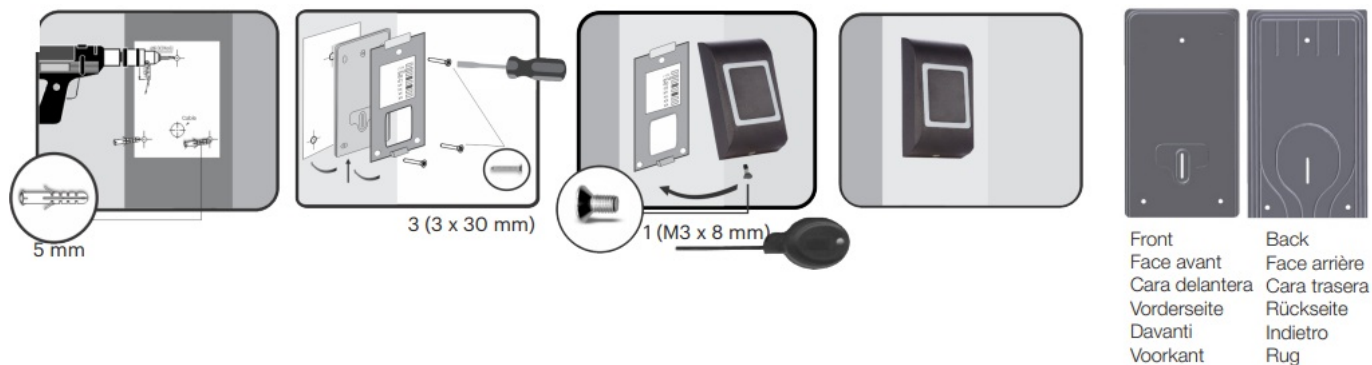


Xsecure®

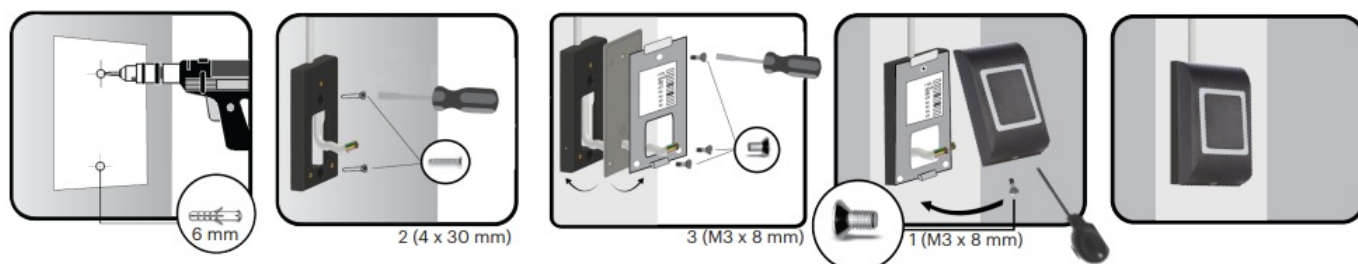
SPECIFICATIONS



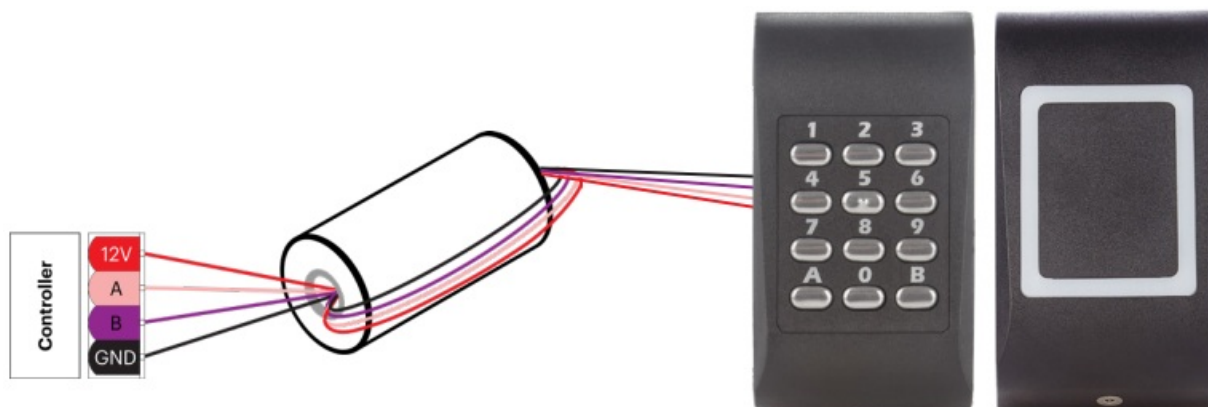
MOUNTING



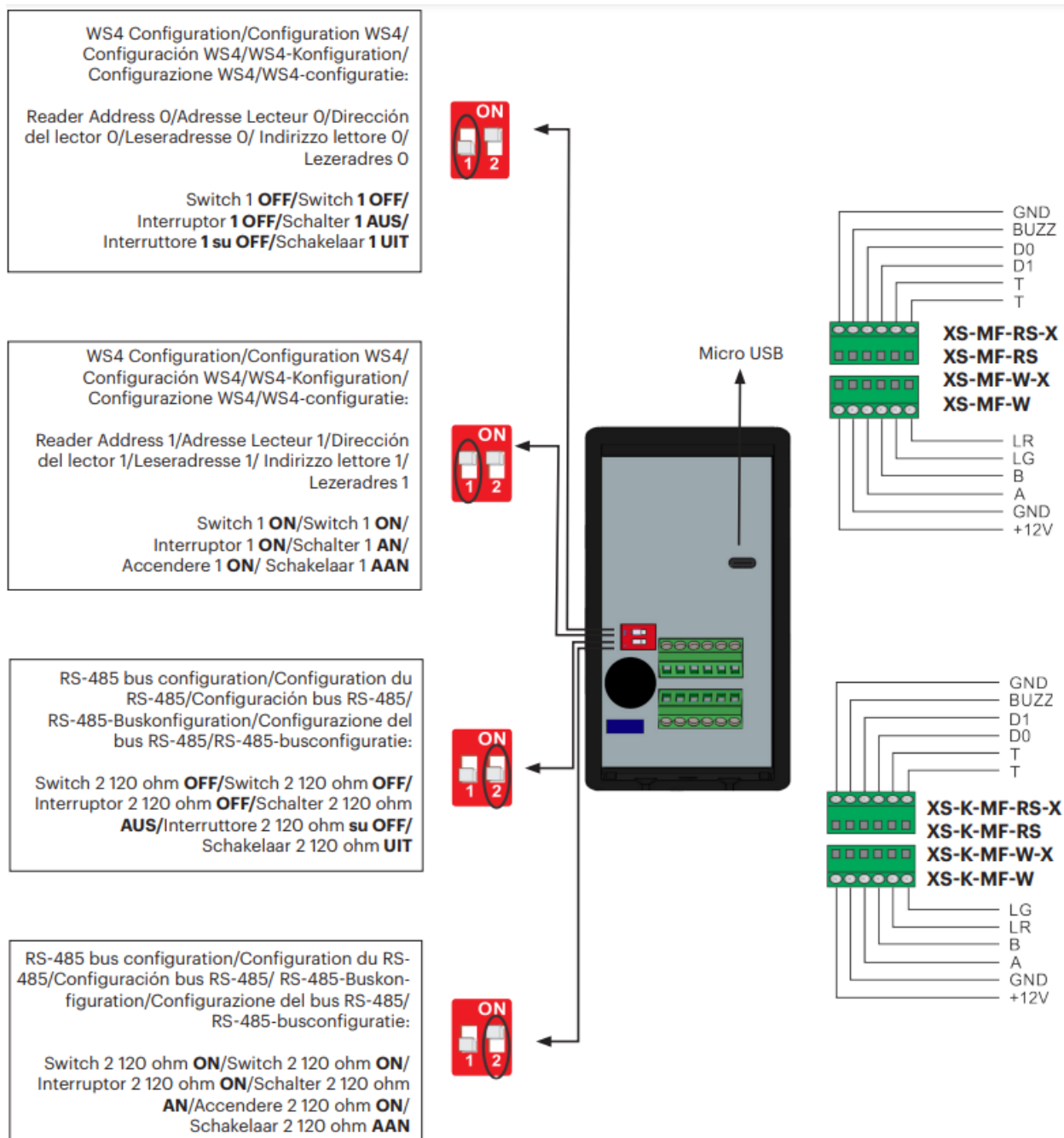
MOUNTING WITH MT-SPACER



FERRITE CORE MOUNTING



TERMINAL BLOCKS AND DIPSWITCH



TERMINALS

TERMINALS BORNIERS TERMINALES ANSCHLÜSSE TERMINALI TERMINALEN	DESCRIPTION DESCRIPCIÓN BESCHREIBUNG DESCRIZIONE BESCHRIJVING	WS4 CONNECTION CONNEXION WS4 CONEXIÓN WS4 WS4-VERBINDUNG CONNESSIONE WS4 WS4-VERBINDING	EWS CONNECTION CONNEXION EWS CONEXIÓN EWS EWS-VERBINDUNG CONNESSIONE EWS EWS-VERBINDING
A	RS-485 line/ Ligne RS-485/ Línea RS-485/ RS-485-Leitung/ Línea RS-485/ RS-485-lijn	RS-485 A (+)	X
B	RS-485 line/ Ligne RS-485/ Línea RS-485/ RS-485-Leitung/ Línea RS-485/ RS-485-lijn	RS-485 B (-)	X
D0	Output/Sortie/ Salida/Ausgang Produzione/Uitvoer	X	Wiegand D0
D1	Output/Sortie/ Salida/Ausgang Produzione/Uitvoer	X	Wiegand D1
LG	Input/Entrée/Entrada/Eingang/Ingresso/ Invoer	X	Green LED Input/Entrée LED verte/Entrada LED verde/Grüne LED-Eingang/Ingresso LED verde/ Groene LED-ingang
LR	Input/Entrée/Entrada/Eingang/Ingresso/ Invoer	X	Red LED Input/Entrée LED rouge/Entrada LED roja/Rote LED-Eingang/Ingresso LED rosso/ Rode LED-ingang
BUZZ	Input/Entrée/Entrada/Eingang/Ingresso/ Invoer	X	X
+ 12 V	Power Supply Alimentation Alimentación Stromversorgung Alimentazione elettrica Elektriciteitsvoorziening	✓	✓
GND	Ground/Terre/Tierra/ Masse/Terra/ Grond	✓	✓
T	Tamper/Autoprotection/Autoprotección/ Sabotageschutz/Manomettere/ Knoeien	X	✓
T	Tamper/Autoprotection/Autoprotección/ Sabotageschutz/Manomettere/ Knoeien	X	✓

CABLING

CABLING	WS4 Configuration:	EWS Configuration:
Max length	80 m	150 m
CABLING	Multiconductor cable 2 twisted pair with shielding	Untwisted, shielded, 0.22 mm ² min. For longer distance above 20 m use larger diameter.

SIGNALISATION

SIGNALISATION	DESCRIPTION	XS-MF-RS-X & XS-MF-RS XS-K-MF-RS-X & XS-K-MF-RS
Reader OFF-Line	Reader lost communication with controller	Red LED Blinks fast

DEFAULT CONFIGURATIONS

- **Online solution:** XS-MF-W & XS-K-MF-W factory setting is to read CSN and Wiegand 34 bit. XS-MF-W-X & XS-K-MF-W-X factory setting is to read Xsecure credentials and Wiegand 34 bit. In order to change the default settings, please use the PROS CS software.
- **Web server solution:** XS-MF-RS & XS-K-MF-RS factory setting is to read CSN. XS-MF-RS-X & XS-K-MF-RS-X factory setting is to read Xsecure credentials.
In order to get the configuration software (Product Manager) and change the default settings, please contact us at: info@xprgroup.com

ACCESSORIES (OPTIONAL)/ ACCESSOIRES (EN OPTION)



MC-MINI
Mini Metal Cover




USP-BK
Mounting Plate



MT-SPACER
Surface Mount Spacer

www.xprgroup.com

Documents / Resources

	<p>xpr XS Series Mifare Reader and Keypad [pdf] Installation Guide XS-K-MF-W, XS-K-MF-W-X, XS-K-MF-RS, XS-K-MF-RS-X, XS-MF-W, XS-MF-W-X, XS-MF-RS, XS-MF-RS-X, XS Series Mifare Reader and Keypad, XS Series, Mifare Reader and Keypad, Reader and Keypad, Keypad</p>
---	---

References

- [XPR Group - Safe access systems provider](#)
- [User Manual](#)

This website is an independent publication and is neither affiliated with nor endorsed by any of the trademark owners. The "Bluetooth®" word mark and logos are registered trademarks owned by Bluetooth SIG, Inc. The "Wi-Fi®" word mark and logos are registered trademarks owned by the Wi-Fi Alliance. Any use of these marks on this website does not imply any affiliation with or endorsement.