



## xpr XP Series RFID Keypads and Readers



# xpr XP Series RFID Keypads and Readers Installation Guide

[Home](#) » [xpr](#) » xpr XP Series RFID Keypads and Readers Installation Guide 

### Contents

- [1 XP Series RFID Keypads and Readers](#)
- [2 Product Usage Instructions](#)
- [3 INSTALLER'S MANUAL](#)
- [4 FERRITE CORE MOUNTING](#)
- [5 TECHNICAL FEATURES](#)
- [6 DIPSWITCH](#)
- [7 Documents / Resources](#)
  - [7.1 References](#)
- [8 Related Posts](#)



## XP Series RFID Keypads and Readers



## Product Specifications

- Model: XP, XP-K & XPM
- RFID Keypads and Readers
- Power Supply: 9 – 15 V DC
- Max Current Consumption at 12 V DC: 100 mA
- Reading Distance: Up to 9 cm for XP/XP-K, Up to 8 cm for XPM
- Operating Temperature: External, IP65
- Dimensions: XP & XP-K 107 x 80 x 27 mm & XPM 114 x 42 x 27 mm

## Product Usage Instructions

### Mounting

#### To mount the device:

1. Surface mount the device securely.
2. Wrap the wires around the ferrite core provided in the kit to reduce EMI.

### Power Supply Connection

Connect the power supply using the following connections:

- +12V IN
- GND (Ground)

### LED Indicators

The device features LED indicators for visual feedback. Green LED indicates power input, and Red LED indicates Wiegand output.

### RS-485 Connection

Connect the RS-485 lines A(+) and B(-) for communication.

### Buzzer and Tamper Connections

Connect the buzzer input and tamper connections as needed for your setup.

### Frequently Asked Questions (FAQ)

What is the maximum reading distance of the device?The device has a reading distance of up to 9 cm for XP/XP-K and up to 8 cm for XPM.

XP, XP-K & XPM: RFID Keypads and Readers

## INSTALLER'S MANUAL

## PRODUCT REFERENCES



## XP

XP-MF-W  
XP-MF-W-X  
XP-MF-RS  
XP-MF-RS-X



## XP-K

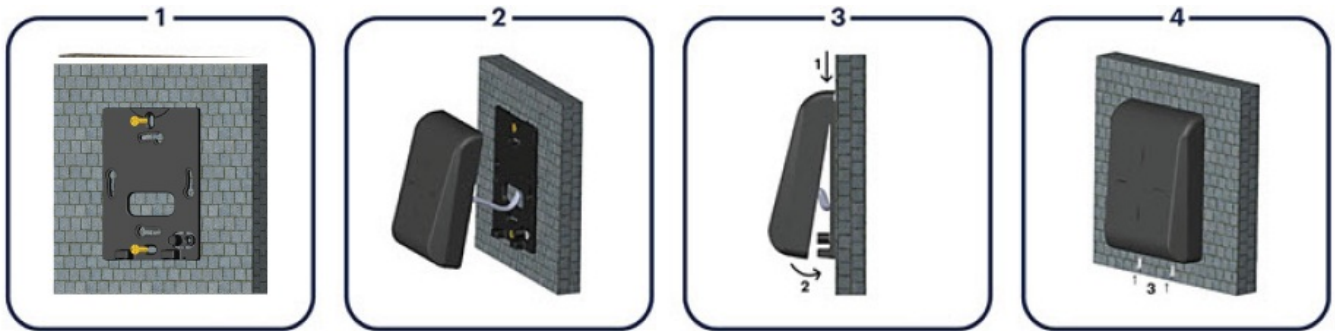
XP-K-MF-W  
XP-K-MF-W-X  
XP-K-MF-RS  
XP-K-MF-RS-X



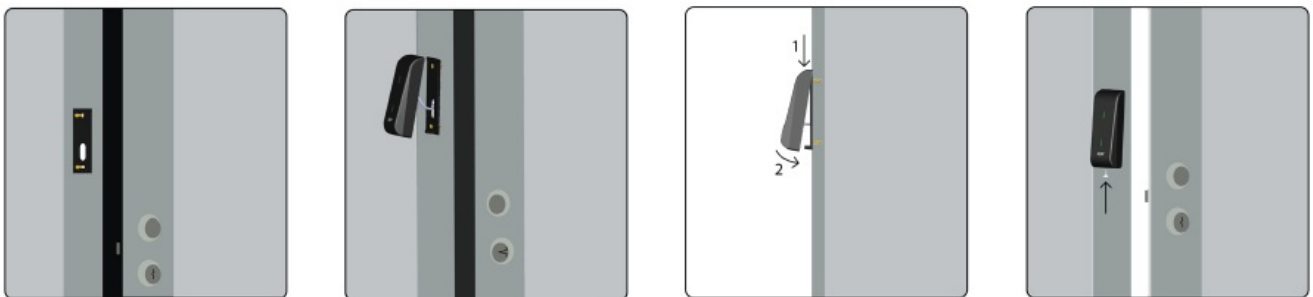
## XPM

XPM-MF-W  
XPM-MF-W-X  
XPM-MF-RS  
XPM-MF-RS-X

### XP & XP-K MOUNTING

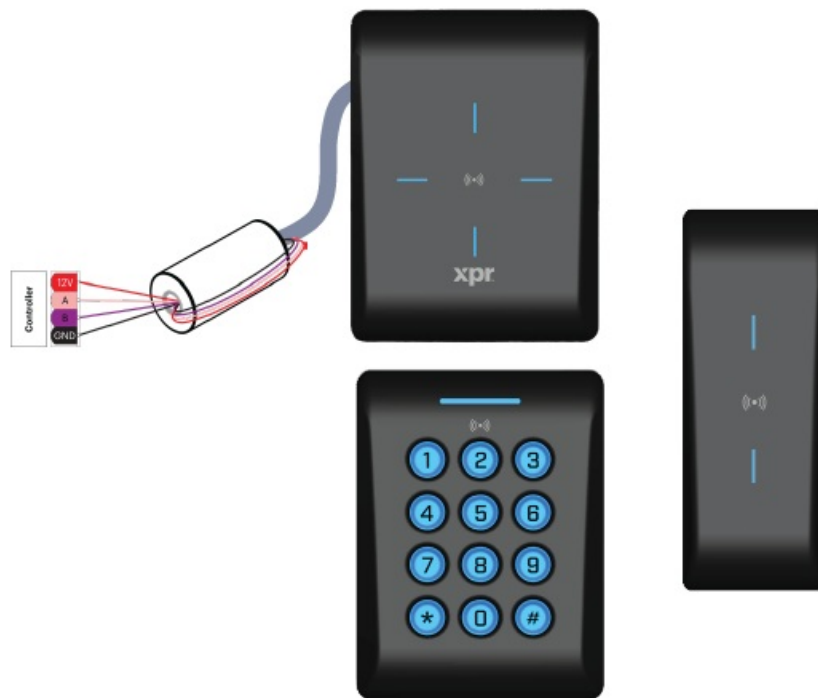


### XPM MOUNTING



### FERRITE CORE MOUNTING

- Wrap the wires around the ferrite core (1 turn).  
The ferrite core is provided with the kit and it is used to reduce the EMI.



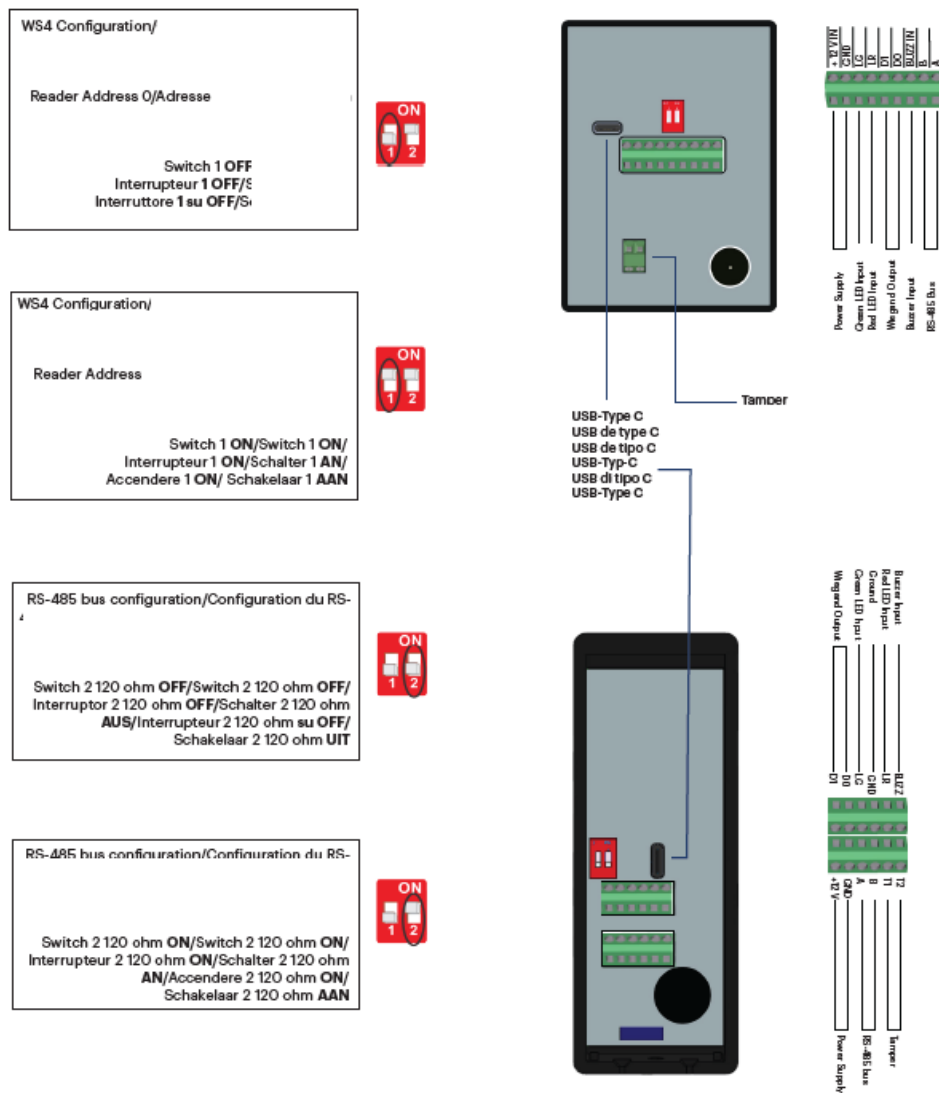
## TECHNICAL FEATURES

TECHNICAL FEATURE	
POWER SUPPLY	9 – 15 V DC
MAXIMUM CURRENT CONSUMPTION AT 12	100 mA
SOUND INDICATOR	Internal buzzer/B
LED INDICATORS	RGB (Red, Green, Blue)/
USB-TYPE C CONNECTOR	Built-in USB-Type C connector for protocol selection, configuration and firmware update
READING DISTANCE	Up to 9cm for XP/XP-K, Up to 8cm for XPM
ENVIRONMENTAL RATING/	Outdoor, IP65/
OPERATING TEMPERATURE	-30°C to +70°C/ -30°C à +70°C -30°C a +70°C/ -30°C to +70°C da -30°C a +70°C/ -30°C tot +70°C
OPERATING HUMIDITY	5% – 95% relative humidity, non-condensing
MOUNTING	Surface mount
CABLING CONNECTION	Terminals
DIMENSIONS (H X W X D)	XP & XP-K 107 x 80 x 27 mm & XPM 114 x 42 x 27
Impact protection rating	XP & XPM: IK 11 XP-K: IK 10

## TERMINALS

TERMINALS		DESCRIPTION	WS4 CONFIGURATION	WIEGAND CONFIGURATION
A		RS-485 line	RS-485 A (+)	<b>X</b>
B		RS-485 line	RS-485 B (-)	<b>X</b>
D0		Output	<b>X</b>	D0
D1		Output	<b>X</b>	D1
LG		Input	<b>X</b>	Green LED Input/Entrée LED verte/
LR		Input	<b>X</b>	Red LED Input/
BUZZ		Input	<b>X</b>	<b>X</b>
+12V		Power Supply	✓	✓
GND		Ground	✓	✓
T		Tamper	<b>X</b> (Tamper state is reported by RS-485)	✓

## XP, XP-K & XPM: TERMINAL BLOCKS AND DIPSWITCH/BORNIERS ET DIPSWITCH



## DIPSWITCH

DIPSWITCH	DESCRIPTION	WS4 CONFIGURATION	WIEGAND CONFIGURATION
SW 1	Setup Installation	The readers for Doors 1.0 and 2.0 must be at address 0 and those for Doors 1.1 and 2.1 at address	X
SW 2	RS-485 120 OHM	✓	X

## WIRING

WIRING	DESCRIPTION DESCRIPTION	WS4 CONFIGURATION	WIEGAND CONFIGURATION CONFIGURATION ON WIEGAND
Max length L ongueur	Cable Length	80 m	150 m
CABLING	Recommended cable type	Multiconductor cable 2 twisted pair with shielding	Untwisted, shielded, 0.22 mm <sup>2</sup> min. For longer distance above 20 m use larger diameter.

## SIGNALISATION

SIGNALISATION	DESCRIPTION DESCRIPTION	WS4 CONFIGURATION E	WIEGAND CONFIGURATION
Reader ON-LINE Lecteur En	Reader is in communication with controller	Managed by Controller	Managed by Controller
Reader OFF-LINE	Reader lost communication with controller	Red LED Blinks fast	X

[www.xprgroup.com](http://www.xprgroup.com)

Documents / Resources



[xpr XP Series RFID Keypads and Readers](#) [pdf] Installation Guide  
XP-MF-W, XP-MF-W-X, XP-MF-RS, XP-MF-RS-X, XP-K-MF-W, XP-K-MF-W-X, XP-K-MF-RS, X  
P-K-MF-RS-X, XPM-MF-W, XPM-MF-W-X, XPM-MF-RS, XPM-MF-RS-X, XP Series RFID Keyp  
ads and Readers, XP Series, XP Series RFID, RFID, RFID Keypads and Readers, RFID Keypa  
ds, RFID Readers, Keypads and Readers, Keypads, Readers

References

- [XPR Group - Safe access systems provider](#)
- [User Manual](#)

[Manuals+](#), [Privacy Policy](#)

This website is an independent publication and is neither affiliated with nor endorsed by any of the trademark owners. The "Bluetooth®" word mark and logos are registered trademarks owned by Bluetooth SIG, Inc. The "Wi-Fi®" word mark and logos are registered trademarks owned by the Wi-Fi Alliance. Any use of these marks on this website does not imply any affiliation with or endorsement.