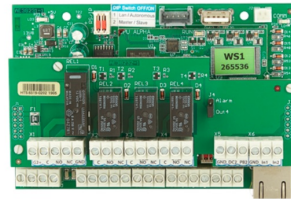




WS4-2D-E 2-Door
Access Control Unit



xpr WS4-2D-E 2-Door Access Control Unit User Guide

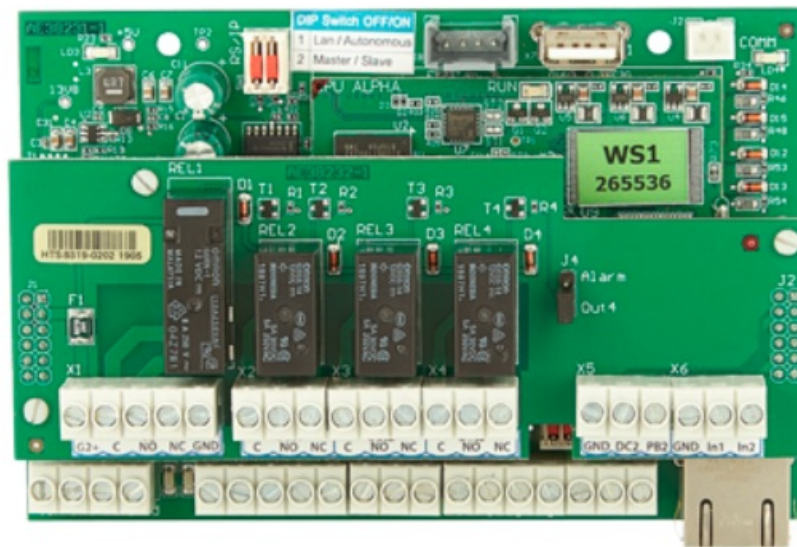
[Home](#) » [xpr](#) » xpr WS4-2D-E 2-Door Access Control Unit User Guide 

Contents

- [1 xpr WS4-2D-E 2-Door Access Control Unit](#)
- [2 FAQ](#)
- [3 SPECIFICATIONS](#)
- [4 FIRST CONNECTION AND CONFIGURATION](#)
- [5 CHANGE PASSWORD](#)
- [6 SYSTEM SETUP](#)
- [7 Connection example of 2 doors](#)
- [8 Documents / Resources](#)
 - [8.1 References](#)
- [9 Related Posts](#)



xpr WS4-2D-E 2-Door Access Control Unit



FAQ

Q: How can I find out the IP address of the WS4-2D-E controller if my network does not recognize it?

A: You can download the Device Finder tool from our website and run it to discover the IP address of the controller connected in your network.

DESCRIPTION

WS4-2D-E is a 2-door control unit designed to operate over readers with RS-485 line.

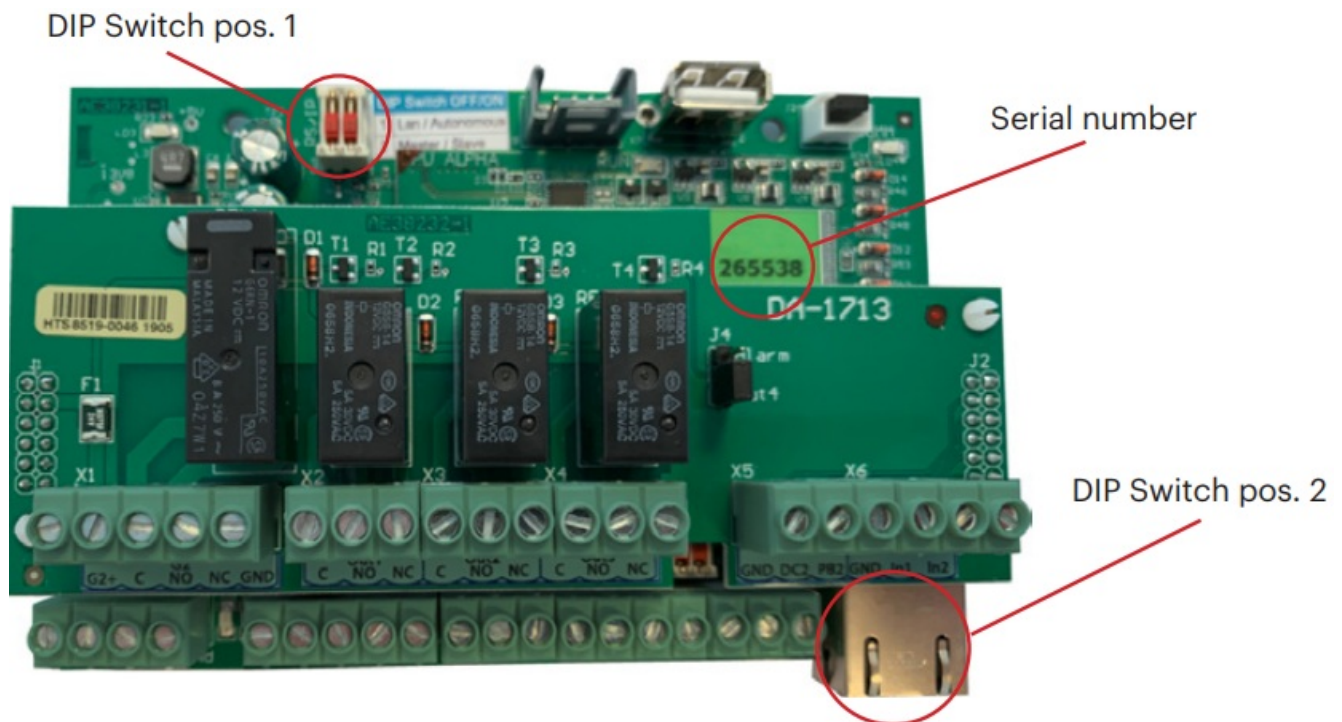
WS4 is a completely autonomous device, operating without additional software or hardware. Any device with web browser can be used for management of the WS4 system.

SPECIFICATIONS

- Capacity: 2500 Users
- Events: 50,000 max.
- Doors: 2 (max. 40 doors in same network)
- Readers: 2
- Door contact inputs: 2
- Push button inputs: 2
- Auxiliary Inputs: 2 (emergency, vehicle detection)
- Auxiliary Outputs: 3 (alarm, storing alarm status, presence)
- Power supply: 15 V DC/5 A
- Supply for the readers: 250 mA each max.
- Supply for the locks: 600 mA each max.
- Relay characteristics: 2 A/48 V AC/DC
- Processor: ARM A5 – 528 MHz
- Memory: 64 MB RAM DDR2 133 MHz
- TCP/IP connection: 10/100/1000 Base-T – HTTP or HTTPS
- Operating temperature: 0 °C to +50 °C
- Humidity: 0% to 85% (non-condensing)
- Tamper: Yes
- Wiegand readers connection: Yes, via Wiegand to RS-485 converter – WS4-CNV

- Elevator feature: Yes, 2 elevators per installation, each – 24 floors
- Interlock, Anti pass back, people counter, presence, system logs, reports in CSV
- System limits of max 40 doors and 15 controllers (1 master + 14 slaves).
- Activate AUX OUT Relay when first person enters and last person leaves (Attendance).
- Minimum password length of 8 characters.
- The WS4 automatically creates an internal backup on USB memory stick at 23:00 only if the programming has been changed. A maximum of 15 backups are retained.

FIRST CONNECTION AND CONFIGURATION



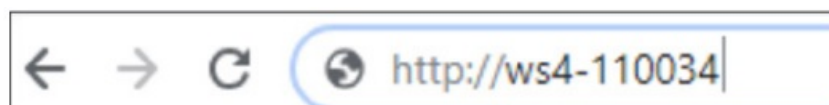
The WS4-2D-E does not have default IP address. By default is set to DHCP. There are 2 methods to connect to and configure WS4-2D-E – LAN and Standalone method.

METHOD 1

(For use in a home or business LAN network)

In this configuration, the network's DHCP server will assign an IP address to your WS4-2D-E

1. Put the DIP switch 1 in position OFF.
2. Connect a cable from your network to the ethernet connector of WS4-2D-E.
3. Open a web browser and enter `http://ws4` followed dash and the serial number of the WS4-2D-E controller.

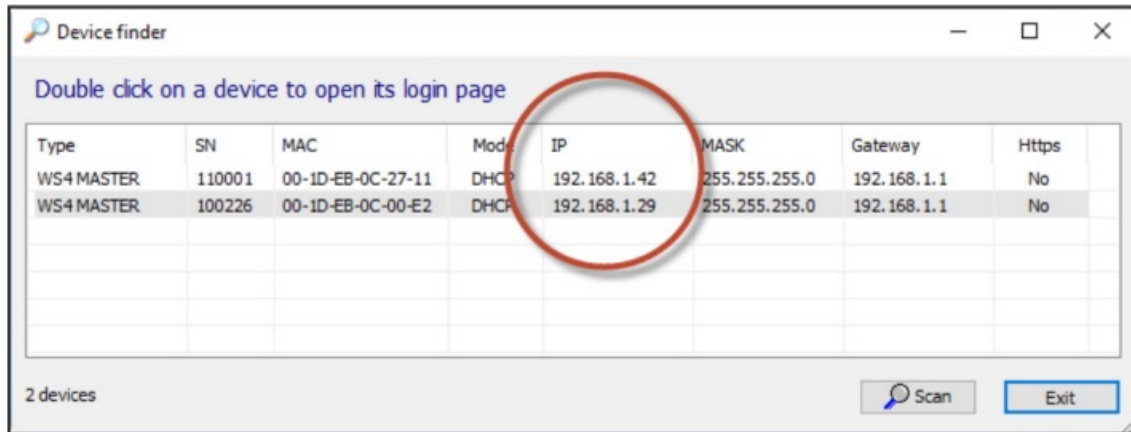


If you cannot connect, your network does not recognize the name of the WS4-2D-E controller. In this case, go to our web site <http://www.xprgroup.com/products/ws4/> and download the tool “Device Finder”.

“Device Finder” will enable you to find out the IP address of the WS4-2D-E controller.

Run the “Device Finder” and you will get a list of all the WS4 controllers connected in your network, including

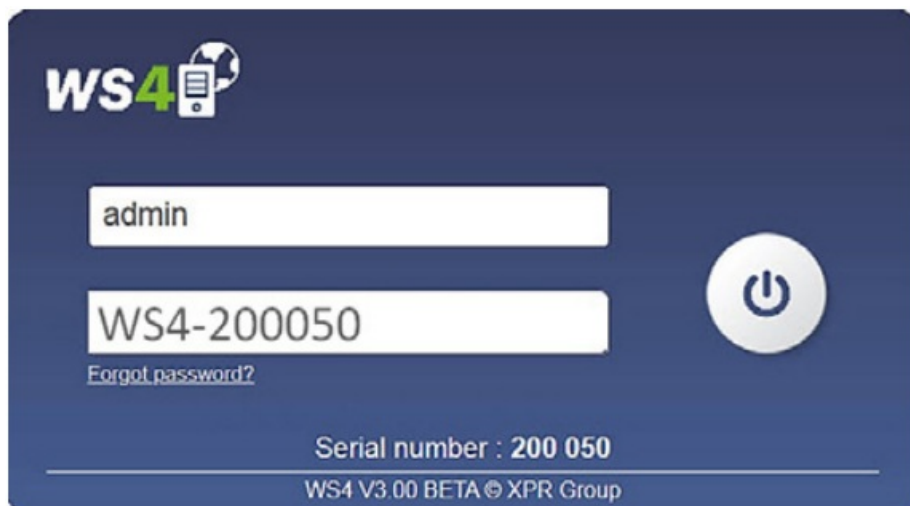
their IP addresses, as the picture below.



Open a browser and type the IP of the WS4- 2D-E controller and you will be prompted to the login page.

User Name: admin

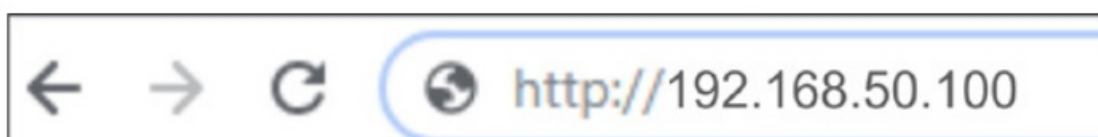
Password: WS4 followed by Dash and the Serial Number (e.g., WS4-110034) just like the image below, all in capital letters without space.



METHOD 2 (For standalone use – without LAN network)

In this configuration, the WS4-2D-E will assign an IP address to your PC. The PC must be set to obtain IP address automatically.

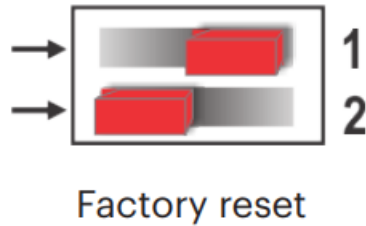
1. Put the DIP switch 1 in position ON.
2. Connect a cable from your PC directly to the ethernet connector of WS4-2D-E.
3. Open a web browser and enter the following IP – 192.168.50.100, then put the login credentials as explained above.



FACTORY RESET

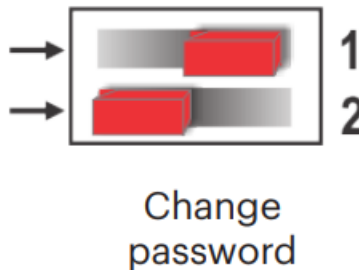
To do this, take the following steps:

1. Put DIP Switch 4 (Factory reset) to ON position.
2. Wait for the blinking green LED (COMM).
3. Consecutively switch the Factory reset switch (DIP 1) 3 times in the following combination OFF – ON – OFF within 10 seconds.
4. Next, the green LED starts blinking very fast, initializes it and the factory default is completed.



CHANGE PASSWORD

DIP Switch 1 allows to log into the system as an administrator if login or password is forgotten.



1. Put DIP Switch 2 (Factory reset) to ON position.
2. Wait for the blinking green LED (COMM).
3. Consecutively switch the Factory reset switch (DIP 1) 3 times in the following combination OFF – ON – OFF within 10 seconds.
4. Next, the green LED starts blinking very fast, initializes it and the factory default is completed.

SYSTEM SETUP

ADDING READERS

Go to “Doors”, select the reader (Fig. 2) and then select the type of the reader in the field “Card”. (Fig. 3). While offline, red LED blinks fast and buzzer beeps continuously. Once communication is established, the red LED and the buzzer stop. Green LED starts to blink continuously. If you want to stop the green LED, go to Settings/System Options and select the backlight ON or OFF (not default) (Fig. 4).

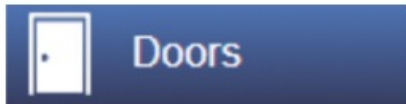


Fig. 1

ID	I/O	Name	APB	ILock	Emg.	Public
1.0	I	1.0				<input type="checkbox"/>
1.1	O	1.1				<input type="checkbox"/>
2.0		2.0				<input type="checkbox"/>
2.1		Not used				

Fig. 2

Fig. 3

Fig. 4

Fig. 5

ID	I/O	Name	APB	ILock	Emg.	Public
1.0						<input type="checkbox"/>
1.1		Main Entry				<input type="checkbox"/>
2.0		2.1				<input type="checkbox"/>
2.1		2.2				<input type="checkbox"/>

Fig. 6

To add 2 readers on 1 Door, select the reader (Fig. 2) and there, for “Type of Access” select “Access with 2 readers” (Fig. 5). Access with 2 readers is only available for doors 1.0 and 2.0, provided that a single door is not already configured in 1.1 or 2.1 respectively (Fig. 6).

ADDING USERS

Go to Users (Fig. 1), select “New” (Fig. 2) and then fill the form (Name, Category, Card Number...) (Fig. 3).



Fig. 1



Fig. 2

Fig. 3

ADDING SLAVE CONTROLLERS

- One system can have up to 15 WS4 controllers (any model) and control up to 40 doors.
- One WS4-2D must be master, the others must be slaves. The master/slave selection is made with DIP-switch 2: OFF – Master (factory setting), ON – Slave.
- Go to “Doors” and click on the link “Add a slave” (Fig. 1). Enter the serial number of the WS4-2D-E to be added and click Search. If it finds it, the system directly adds this slave into the installation and you can configure its doors (Fig. 2).
- In case of error, a message is displayed in red.



Add a slave ?

Fig. 2

6. Alarm cable 2×0.22

7. The cross section of the cable depends on the current needed by the lock

Note: The elevators relay boards (WS4-RB-12) are connected on the same RS-485 lines as the readers.

This product herewith complies with the requirements of EMC directive 2014/30/EU.

In addition it complies with RoHS2 directive EN50581:2012 and RoHS3 Directive 2015/863/EU.

www.xprgroup.com

Documents / Resources



[xpr WS4-2D-E 2-Door Access Control Unit](#) [pdf] User Guide

WS4-2D-E 2-Door Access Control Unit, WS4-2D-E, 2-Door Access Control Unit, Access Control Unit, Control Unit

References

- [XPR Group - Safe access systems provider](#)
- [XPR Group - Safe access systems provider](#)
- [User Manual](#)

[Manuals+](#), [Privacy Policy](#)

This website is an independent publication and is neither affiliated with nor endorsed by any of the trademark owners. The "Bluetooth®" word mark and logos are registered trademarks owned by Bluetooth SIG, Inc. The "Wi-Fi®" word mark and logos are registered trademarks owned by the Wi-Fi Alliance. Any use of these marks on this website does not imply any affiliation with or endorsement.