



# xpr VKP99 Elegant Vandal Resistant Standalone Keypad User Manual

[Home](#) » [xpr](#) » xpr VKP99 Elegant Vandal Resistant Standalone Keypad User Manual 

## Contents

- [1 xpr VKP99 Elegant Vandal Resistant Standalone Keypad](#)
- [2 Product Information](#)
- [3 FEATURES](#)
- [4 MOUNTING](#)
- [5 WIRING](#)
- [6 CONNECTING STRIKE TO THE RELAY](#)
- [7 REDEFINING MASTER CODE](#)
- [8 PROGRAMMING FLOWCHART](#)
- [9 APPLICATIONS](#)
- [10 Documents / Resources](#)
  - [10.1 References](#)



**xpr VKP99 Elegant Vandal Resistant Standalone Keypad**



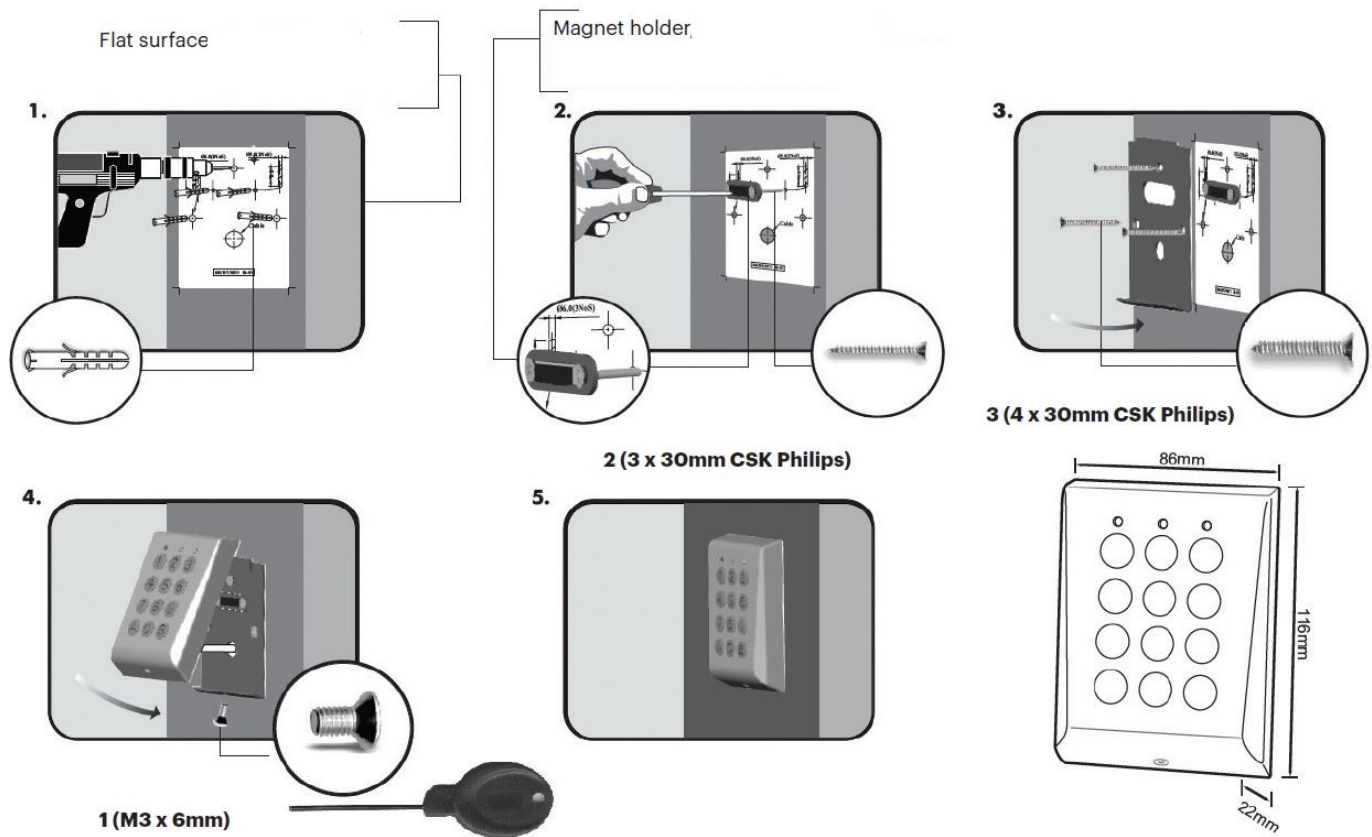
## Product Information

The VKP99 is a security keypad system that allows users to set up master codes and user codes for access control. It features a tamper switch, dipswitch, and proximity reader for added security. The product is available in multiple languages including English, French, Italian, Spanish, German, and Dutch.

## FEATURES

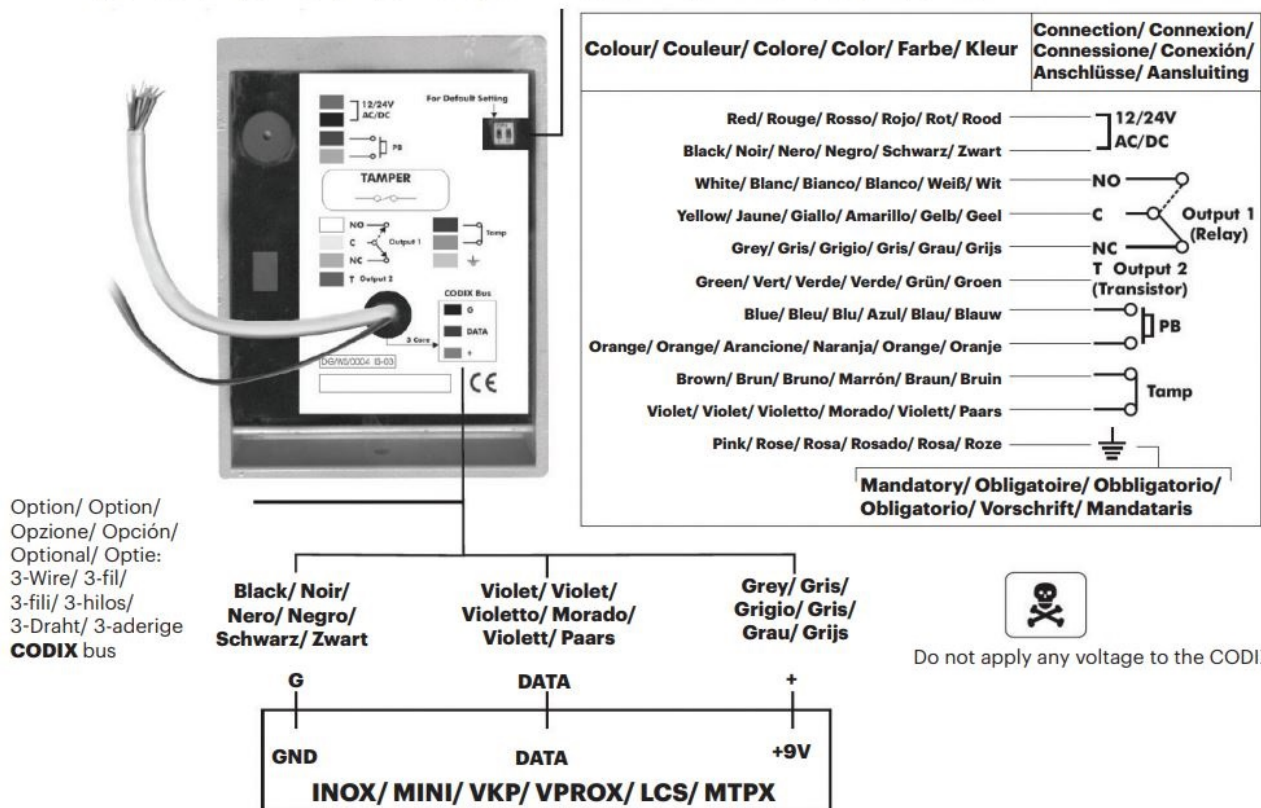
- Standalone vandal-resistant keypad
- Potted aluminium cast keypad with 11- core cable
- Operates on 12/24V AC/DC
- 99 User memory (codes up to 8 digits long)
- 2 outputs that operate in pulse (01 ... 99 sec) or latch mode (00)
- 1 Exit button
- 30 sec lockout after 8 consecutive invalid codes
- Dipswitch to regain default settings
- Visual and audible feedback
- Tamper switch for higher security
- EEPROM prevents data loss during power failure
- Peripherals connected via bi-directional CODIX bus
- Dustproof and waterproof (IP66)
- Built-in REED switch/tamper
- Magnet holder provided
- Current Consumption Standby: 10mA, Maximum: 60mA
- Cable: 0.5 m

## MOUNTING

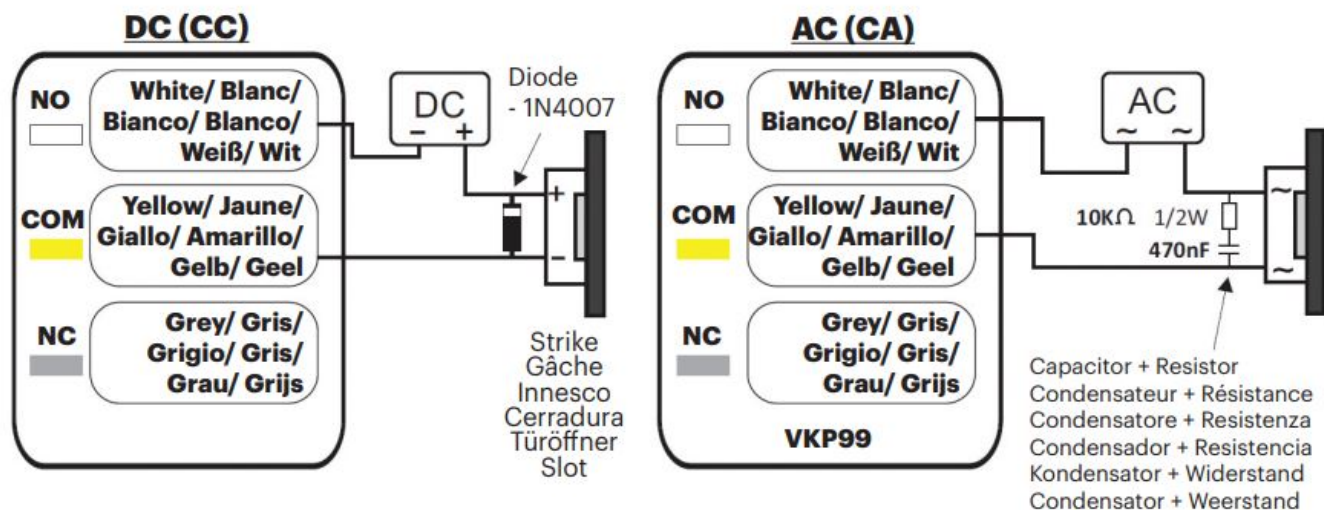


## WIRING

### Dipswitch/



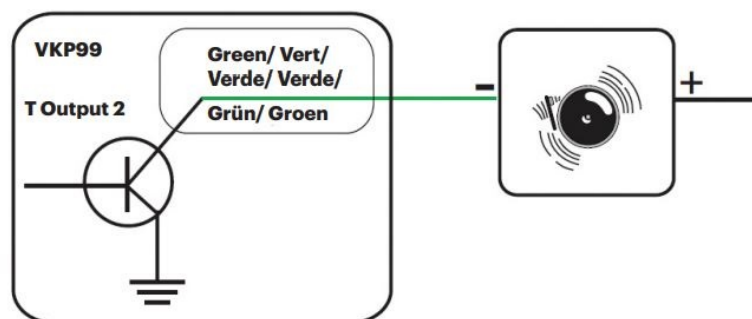
## CONNECTING STRIKE TO THE RELAY



- **NO:** Normally open
- **COM:** Common
- **NC:** Normally closed

## CONNECTING THE TRANSISTOR

Transistor: Ptot=250 mW (Vce x Ic), Vceo max = 30V, Ic max. (DC (CC) = 100 mA)



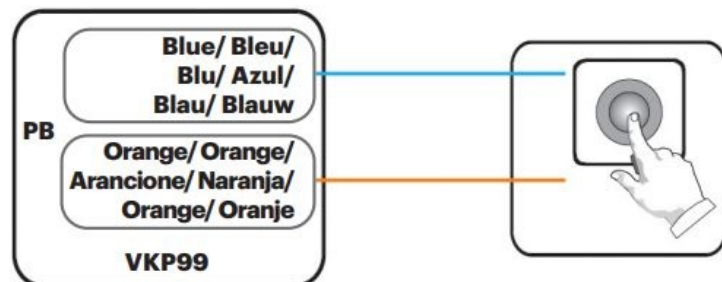
**Note:** The transistor output can be only used when the device is powered with DC Voltage 12 -24 Vdc.

## GREEN AND RED LEDS FOR OUTPUT STATUS

Green LED indicates activation of relay output whereas Red LED indicates activation of transistor output.

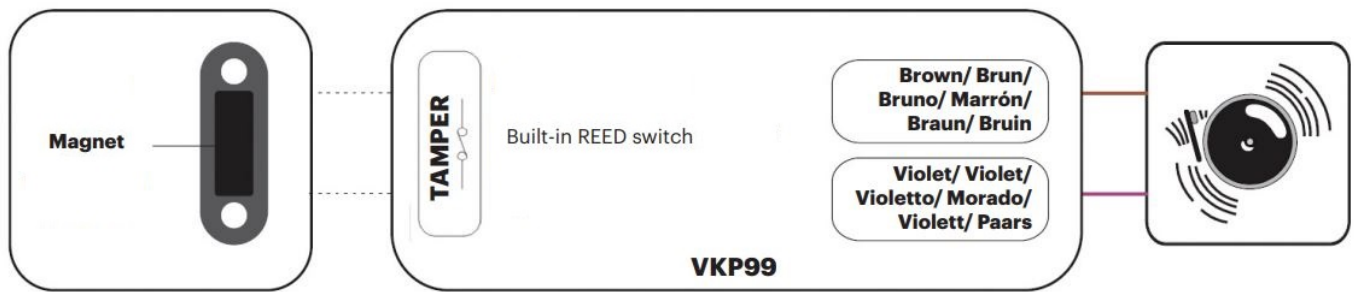
## EXIT BUTTON

Exit button (NO) automatically activates relay output.



Exit button (NO) automatically activates relay output.

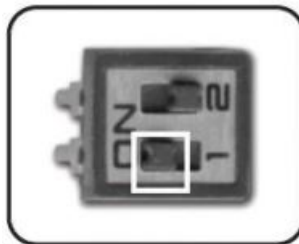
## TAMPER SWITCH



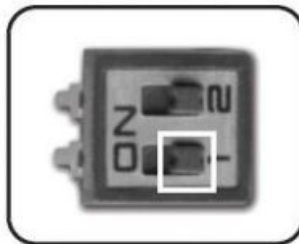
## REDEFINING MASTER CODE

It is possible to redefine and restore the default setting if the Master code is forgotten.

1. Disconnect power and turn the Dipswitch 1 ON.

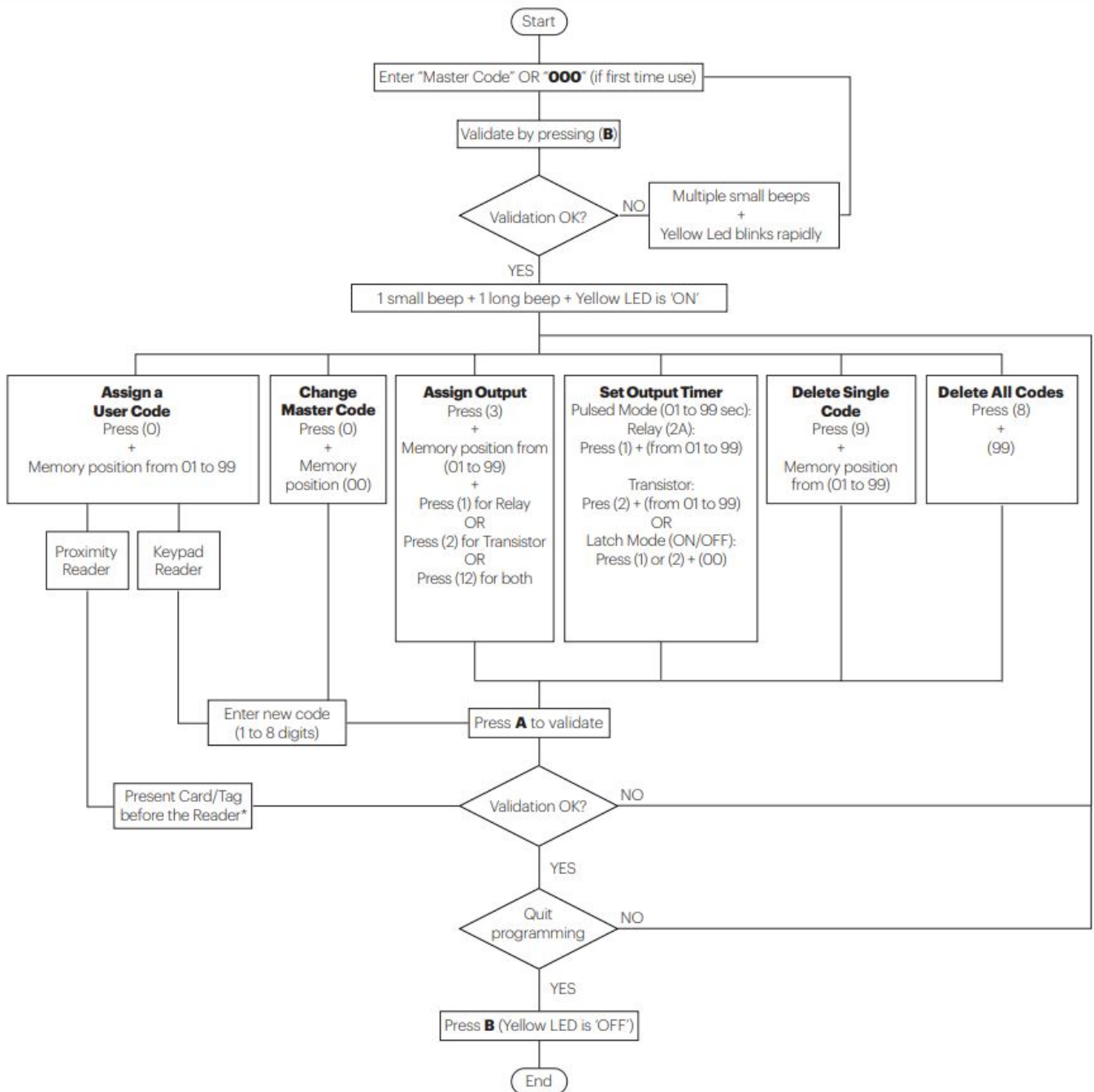


2. Reconnect power. The keypad will beep continuously.
3. Turn the Dipswitch 1 OFF. (Yellow LED ON + long beep).
4. Press 0+00.



5. Press the new MASTER Code (1 to 8 digits).
6. Press A to confirm.
7. Press B to exit (Yellow LED OFF).

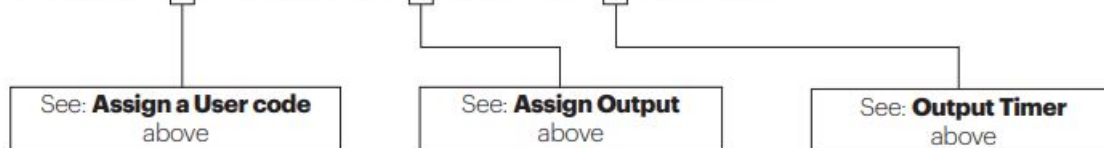
## PROGRAMMING FLOWCHART



**Notes** Memory Position for User Code is always 2 digits \*no need to validate with A  
Assign Examples

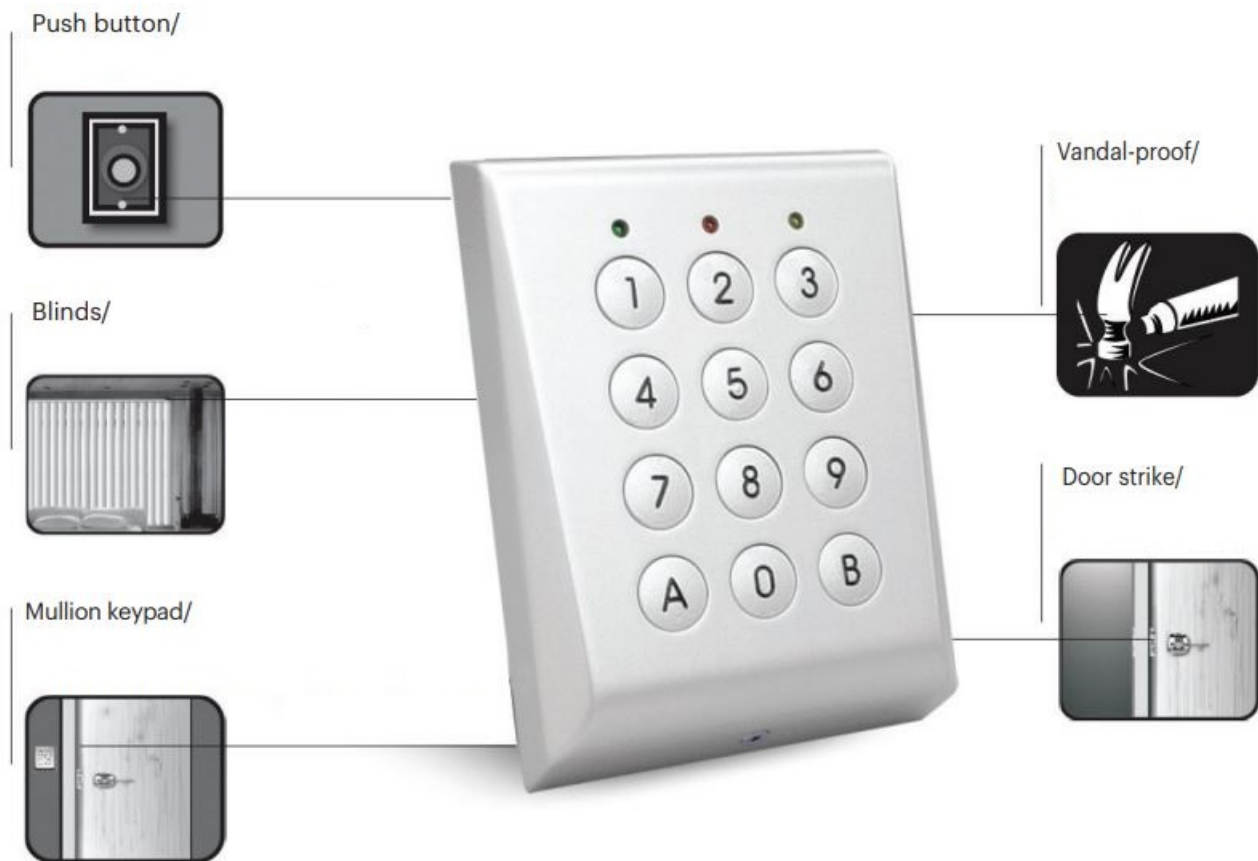
- Ex.1:** To assign User Code "12345" at Memory Position "5" and Relay (2A) in Latch Mode assuming Master code = 000 Press **000B + 0 + 05 + 12345 + A + 3 + 05 + 1 + A + 1 + 00 + A + B** .
- Ex.2:** To assign User Code "6789" at Memory Position "6" and Transistor that activates for 5 seconds assuming Master code = 000 Press **000B + 0 + 06 + 6789 + A + 3 + 06 + 2 + A + 2 + 05 + A + B** .

Press **000B + 0 + 06 + 6789 + A + 3 + 06 + 2 + A + 2 + 05 + A + B**.



## APPLICATIONS

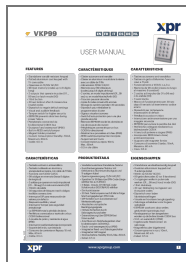




This product herewith complies with requirements of EMC directive 2014/30/EU. In addition it complies with RoHS2 directive EN50581:2012 and RoHS3 Directive 2015/863/EU.

[www.xprgroup.com](http://www.xprgroup.com)

## Documents / Resources



[xpr VKP99 Elegant Vandal Resistant Standalone Keypad](#) [pdf] User Manual  
INOX, MINI, VKP, VPROX, LCS, MTPX, VKP99 Elegant Vandal Resistant Standalone Keypad, Elegant Vandal Resistant Standalone Keypad, Resistant Standalone Keypad, Standalone Keypad, Keypad

## References

- [XPR Group - Safe access systems provider](#)

[Manuals+](#)