



xpr MTT-IR Infrared Touchless Switch User Manual

[Home](#) » [xpr](#) » xpr MTT-IR Infrared Touchless Switch User Manual 

Contents

- [1 xpr MTT-IR Infrared Touchless Switch](#)
- [2 SPECIFICATIONS](#)
- [3 MOUNTING](#)
- [4 TERMINAL BLOCKS AND DIP SWITCH](#)
- [5 WIRING](#)
- [6 OPERATION](#)
- [7 SET RELAY TIME](#)
- [8 LED CONTROL](#)
- [9 Documents / Resources](#)
- [10 Related Posts](#)



xpr MTT-IR Infrared Touchless Switch



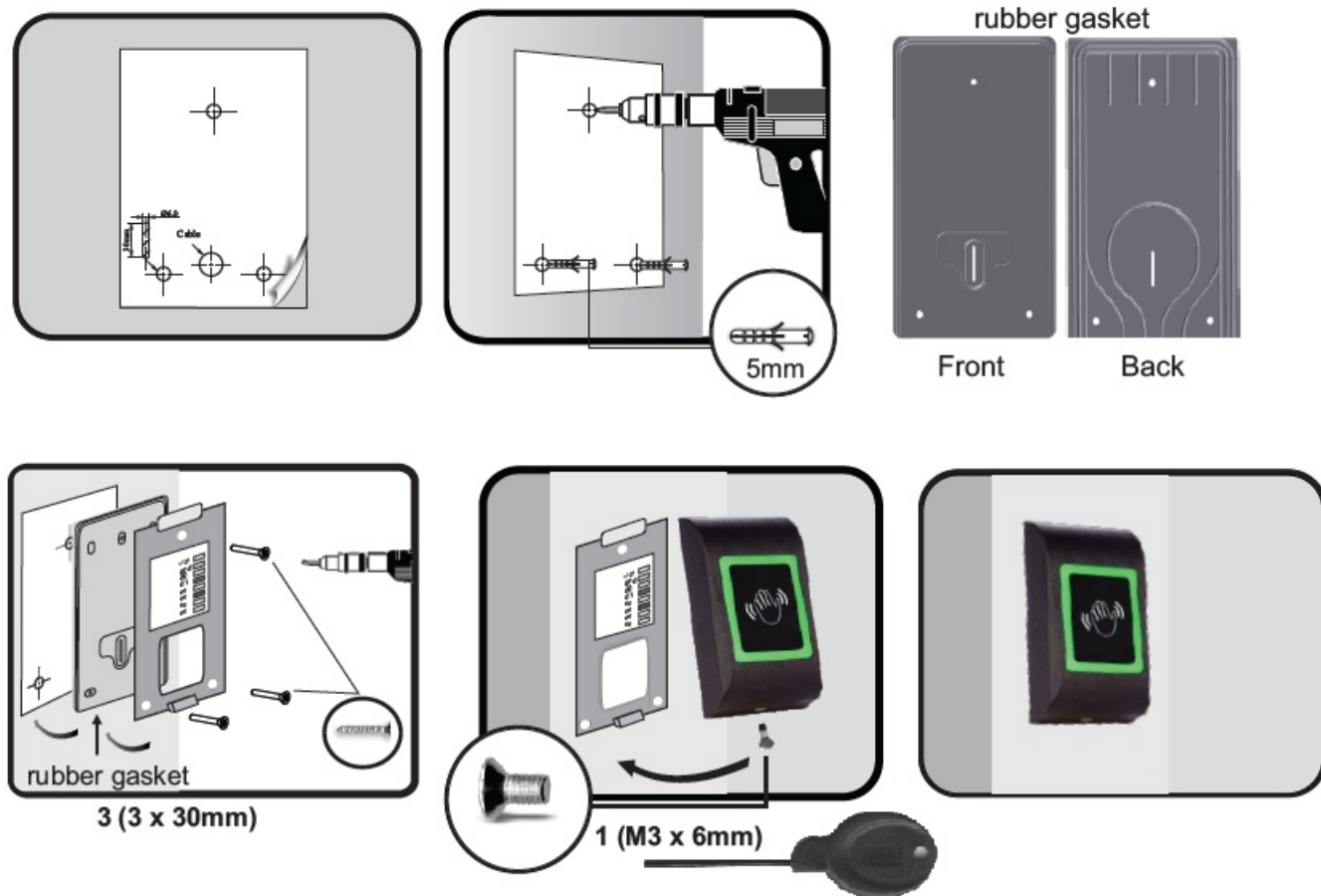
SPECIFICATIONS

Input voltage:	12-24 VAC/DC;
Current consumption:	max. 50mA
Sensor type:	Infrared
Relay Output:	1A at 24V DC / 120V AC
Set relay time:	1, 3, 5, 10, 20, 30, 60 seconds or Toggle (ON/OFF) mode
Detection distance:	up to 6 cm
Detection distance adjustment:	Yes, by DIP switch
Indicators-LED:	Green, red, orange
LED control:	Yes, internal or external
Tamper:	Yes
Backlight ON/OFF:	Yes, by DIP switch
Buzzer ON/OFF:	Yes, by DIP switch
Operating Temperature:	-20o to 50°C
Operating Humidity:	Non-condensing up to 95%
Dimensions (mm):	92L x 51W x 27H
Housing	ABS

Protection:

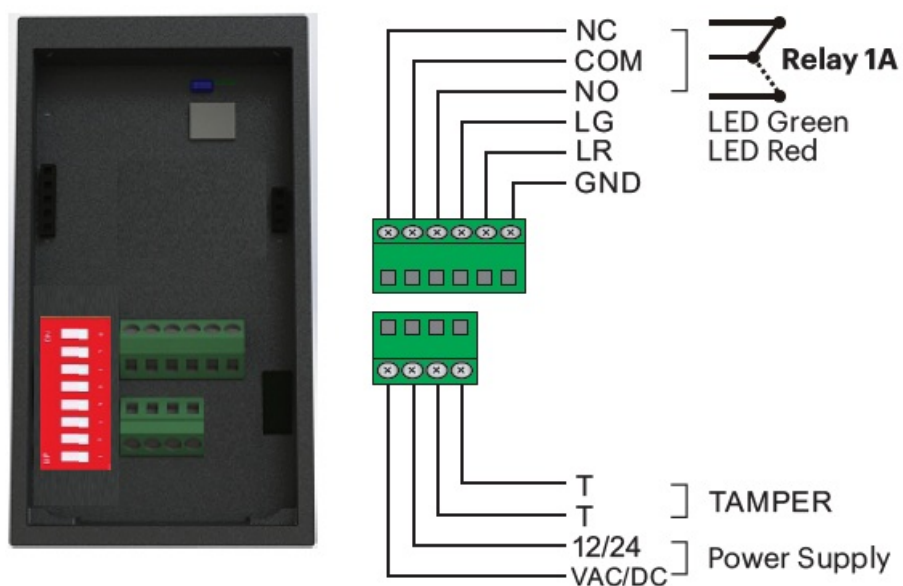
IP65

MOUNTING



IMPORTANT NOTE: The touch-free exit button is intended for indoor use. For outdoor use, it must be protected from direct rain / sleet / snow with the MC-MINI protective housing in order to avoid false triggering of the sensor.

TERMINAL BLOCKS AND DIP SWITCH

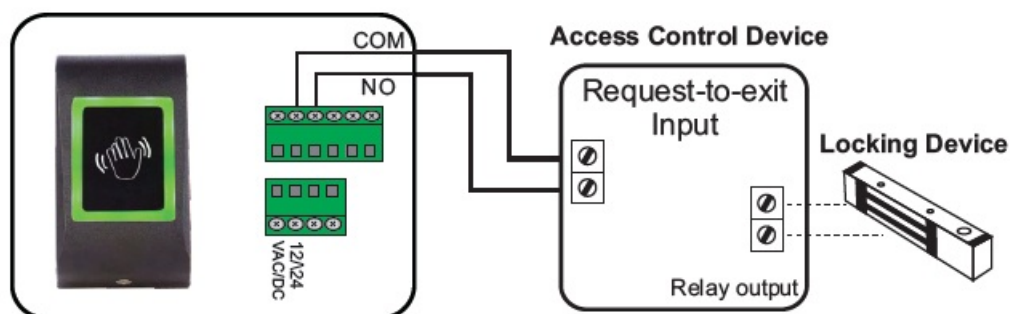




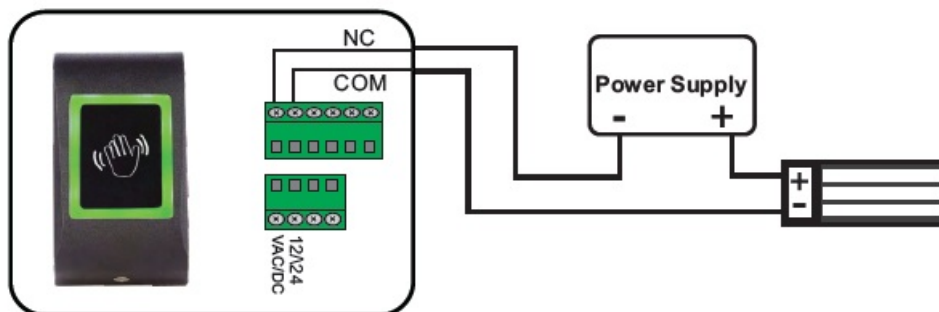
1. Relay time 1
2. Relay time 2
3. Relay time 3
4. Buzzer ON/OFF
5. Backlight ON/OFF / LED Control (ON-external, OFF-internal)
6. Input Level (ON- Low, OFF-high)
7. Detection distance adjustment (ON-6cm, OFF-2cm)
8. Not used

WIRING

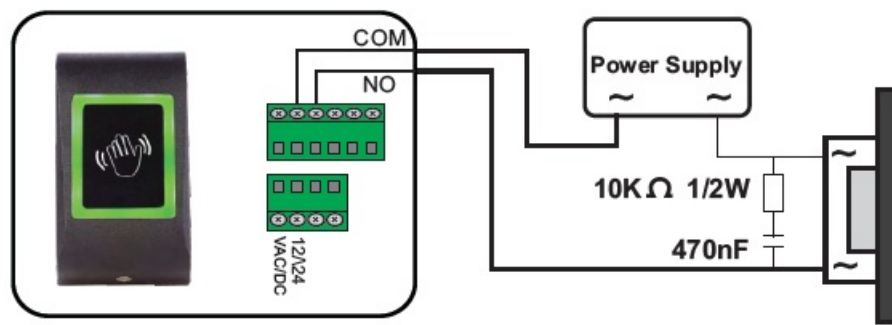
- CONNECTION TO ACCESS CONTROL PANEL



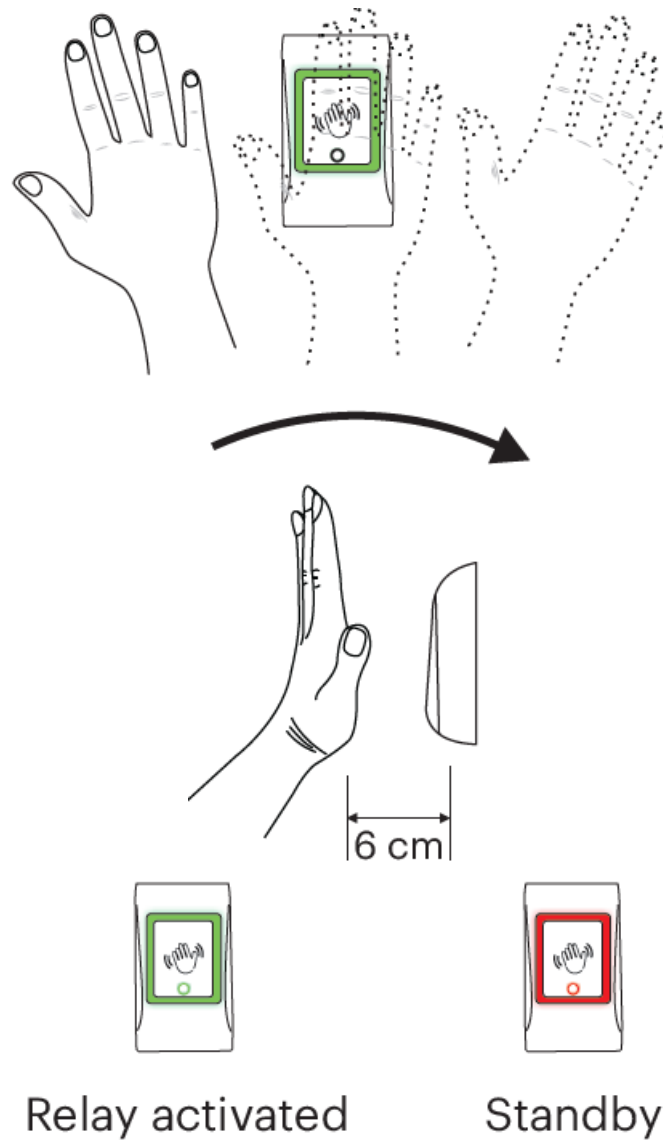
- OUTPUT CONNECTION FOR DC DEVICE – FAIL OPEN



- OUTPUT CONNECTION FOR AC DEVICE – FAIL SECURE



OPERATION



The device is activated with simple wave of a hand in front of the device.
The device will not be activated if the hand is not removed from the sensor within 3 seconds.

SET RELAY TIME

Relay Time	DIP Switch 1	DIP Switch 2	DIP Switch 3
Toggle (ON/OFF Mode)	OFF	OFF	OFF
1 Second	ON	OFF	OFF
3 Seconds	OFF	ON	OFF
5 Seconds	ON	ON	OFF
10 Seconds	OFF	OFF	ON
20 Seconds	ON	OFF	ON
30 Seconds	OFF	ON	ON
60 Seconds	ON	ON	ON



1. Relay time 1
2. Relay time 2
3. Relay time 3
4. Buzzer ON/OFF
5. Backlight ON/OFF / LED Control (ON-external, OFF-internal)
6. Input Level (ON- Low, OFF-high)
7. Detection distance adjustment (ON-5cm, OFF-2cm)
8. Not used.

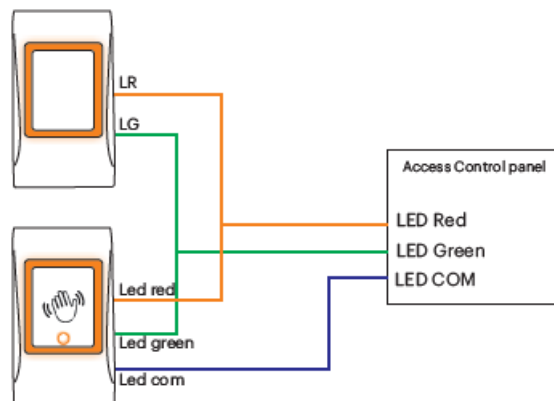
LED CONTROL

Mode	SW5	SW6	LR Terminal	LG Terminal	Relay	Color
Normal Mode	OFF	OFF	Not Connected	Not Connected	OFF (Standby)	Red
					ON	Green
External Control (Active High Signal)	ON	OFF	Low	Low		No Light
			High	Low		Red
			Low	High		Green
			High	High		Orange
External Control (Active Low Signal)	ON	ON	Low	Low		Orange
			High	Low		Green
			Low	High		Red
			High	High		No Light



1. Input Level (ON- Low, OFF-high)
2. Backlight ON/OFF / LED Control (ON-external, OFF-internal)

If switch 5 is OFF, then the control of the light is left to the device itself. If switch 5 is ON, then the LED light is controlled by the device where the LED terminals (LG, LR) are connected. Switch 6 defines the default state of the device, where the LED terminals (LG, LR) are connected. Default Low is GND and default high is 12V or open.



Example of externally controlled LED light, where the exit button's light follows the reader's light.

This product herewith complies with requirements of EMC directive 2014/30/EU, Radio Equipment Directive 2014/53/EU. In addition it complies with RoHS2 directive EN50581:2012 and RoHS3 Directive 2015/863/EU.

www.xprgroup.com

Documents / Resources



[xpr MTT-IR Infrared Touchless Switch \[pdf\] User Manual](#)

MTT-IR Infrared Touchless Switch, MTT-IR, Infrared Touchless Switch, Touchless Switch, Switch