



xpr MTPADP-BT-EH-SA Bluetooth Standalone Keypad with Integrated RFID Reader User Manual

[Home](#) » [xpr](#) » xpr MTPADP-BT-EH-SA Bluetooth Standalone Keypad with Integrated RFID Reader User Manual



Contents

- [1 xpr MTPADP-BT-EH-SA Bluetooth Standalone Keypad with Integrated RFID Reader](#)
- [2 SPECIFICATIONS](#)
- [3 MOUNTING](#)
- [4 RESET READER TO DEFAULT](#)
- [5 Wiring and pairing MTPADP-BT-EH + RU1](#)
- [6 SETTING UP READERS WITH XPR SMART ADMIN WINDOWS SOFTWARE](#)
- [7 ADDING USERS](#)
- [8 Documents / Resources](#)
- [9 Related Posts](#)

xpr MTPADP-BT-EH-SA Bluetooth Standalone Keypad with Integrated RFID Reader



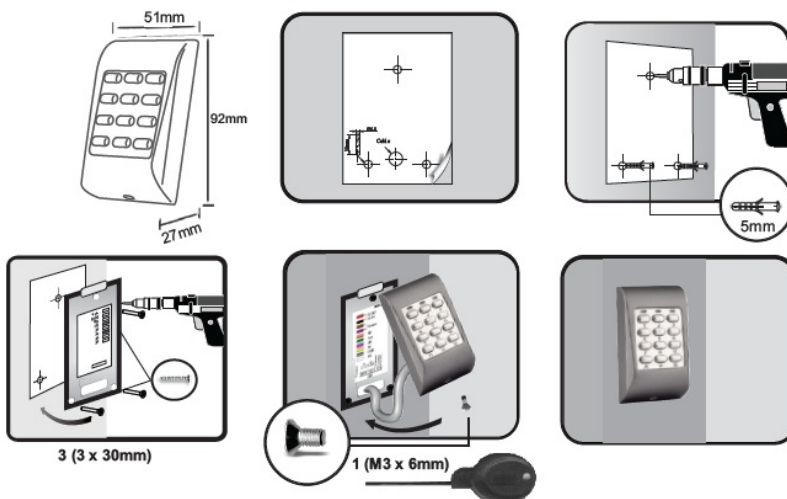
SPECIFICATIONS

| | |
|-----------------------------------|---|
| <u>User capacity:</u> | 100 Cards and 100 PIN Codes |
| <u>Relays:</u> | 1 or 2 depending on the remote relay unit 1 with RTT and RU1 and 2 with RU2 and DINRTT |
| <u>Output:</u> | RS-485, Wiegand |
| <u>Entry mode:</u> | PIN Code, Card, PIN Code or Card |
| <u>RFID reading type:</u> | EM 4002/4100 and HID (125kHz) |
| <u>Reading distance:</u> | up to 4cm |
| <u>PIN Code Length:</u> | 6 Digits |
| <u>Power supply:</u> | 12 VDC; max. 100mA |
| <u>Buzzer, backlight control:</u> | Yes, ON/OFF via XPR Smart Admin |
| <u>Tamper:</u> | Yes |
| <u>RS-485 interface:</u> | Yes, for connecting I/O boards like RU1, RTT, RU2, DINRTT |
| <u>Door Open Time:</u> | 0 to 255 sec. or toggle (ON/OFF mode) |
| <u>IP Factor:</u> | IP65 |
| <u>Operating Temperature:</u> | 20°C to +50°C |
| <u>Operating Humidity:</u> | 5% to 95% RH without condensation |
| <u>Firmware upgrade:</u> | Yes, via Bluetooth® wireless technology |
| <u>Wiegand output:</u> | Wiegand 24, 26, 32, 34, 56, 58 bits or 4, 6, 8 bit per key for the keypad |
| <u>Programming:</u> | via XPR Smart Admin |
| <u>Door operation:</u> | via XPR Smart Access |
| <u>Holidays:</u> | 24 |
| <u>Event capacity:</u> | 4000 |

Important note:

The Bluetooth® reader comes with an RU1 remote relay unit. Make sure to make firmware updates with the latest available firmware.

MOUNTING



Tricolor indication LED



RESET READER TO DEFAULT



1. Turn the device OFF
2. Put dipswitch 1 to position ON
3. Turn the power ON
4. Wait approx. 15 seconds until continuous beeps.
5. Put dipswitch 1 to OFF
6. Wait for a long beep and an orange backlight led.

The reset procedure will bring the reader to default. The password will be deleted, all the users and the reader will be unpaired from the remote relay unit. Unpairing the reader after reset, prevents unauthorized reset and keeps the unit in the high-security state

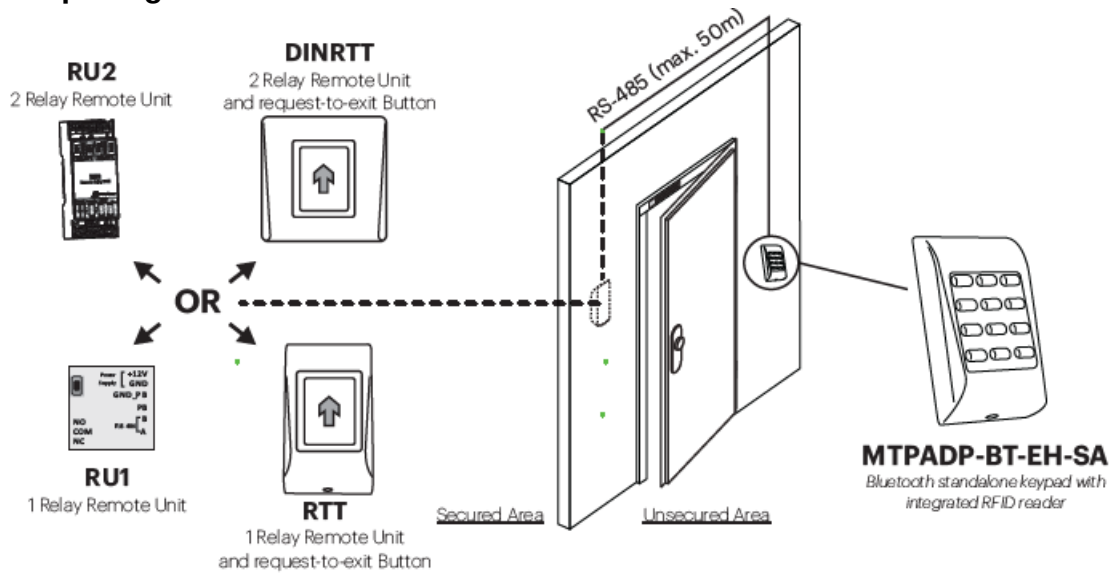
WIRING AND PAIRING

There are four options to wire and pair the reader. It can be paired to RU2, RU1, DINRTT, and RTT.

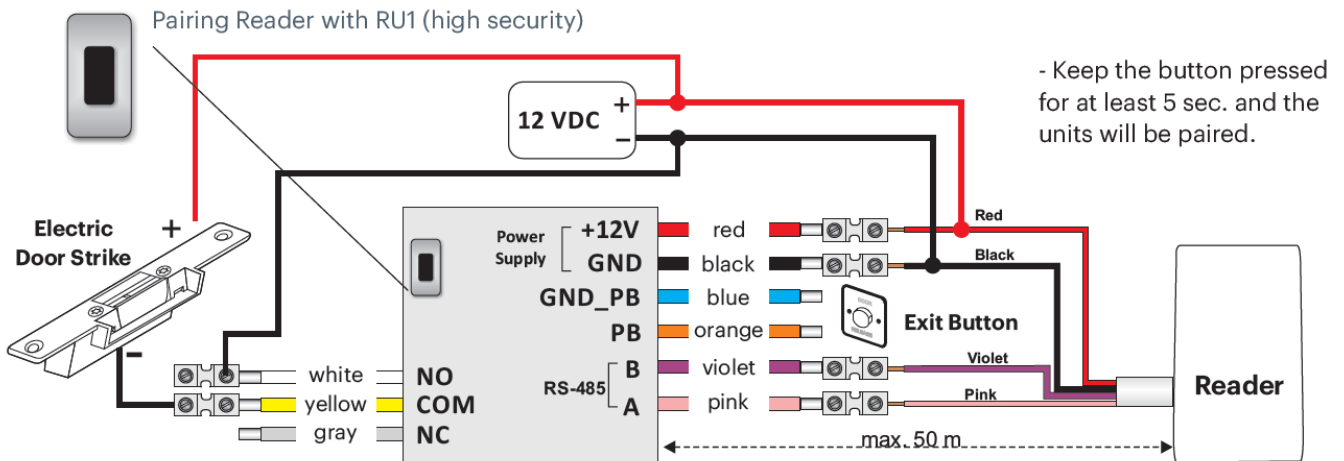


Pairing the reader with the remote relay unit is done from the remote relay unit and enables added security. After being paired, it is not possible to switch any of the devices, since the reader will work only with the paired remote relay unit. The Bluetooth reader must be connected to a remote relay unit unless is used as a Wiegand reader. The remote relay units compatible with MTPADB-BT-EH-SA are RU1, RU2, RTT, and DINRTT. Once connected, the remote relay unit must be paired with the Bluetooth reader.

Wiring and pairing MTPADP-BT-EH + RU1



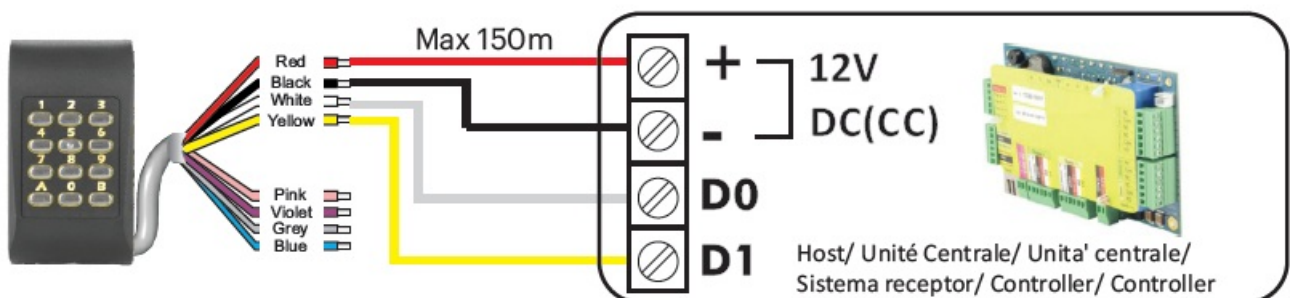
Pairing Reader with RU1 (high security)



Other pairing devices:

| Device | Description | Relays |
|--------|--|--------|
| RU2 | DIN rail mount remote relay unit | 2 |
| DINRTT | Flush mount sensitive push button and remote relay | 2 |
| RTT | Surface mount sensitive push button and remote relay | 1 |

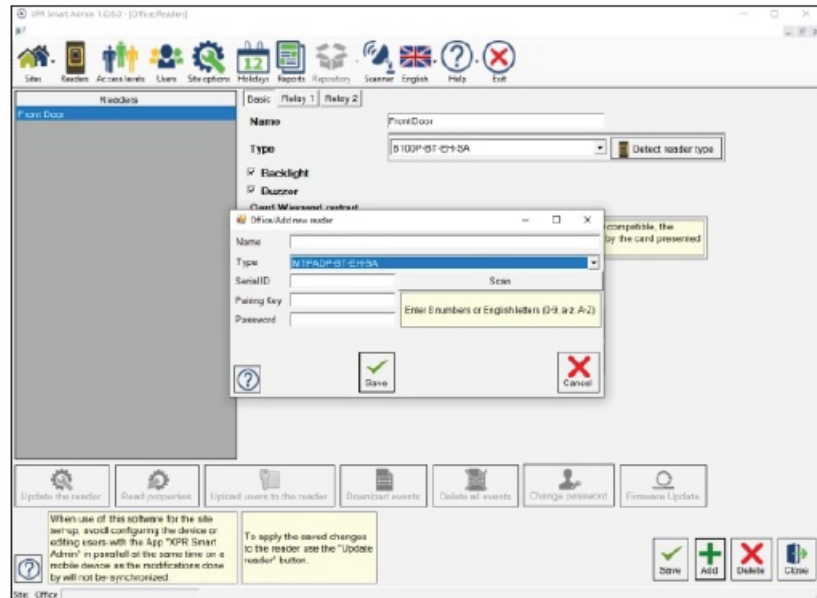
Wiring MTPADP-BT-EH-SA to Wiegand controller



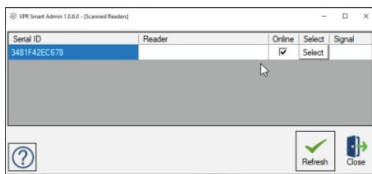
By default, the reader is set to Wiegand 26 bit for both the keypad and the RFID reader. You can set the reader, using the software, to Wiegand 24, 26, 32, 34, 56, 58 bits.

You can set the keypad to send 4, 6 or 8 bits per key, while the RFID reader (card) sends Wiegand.

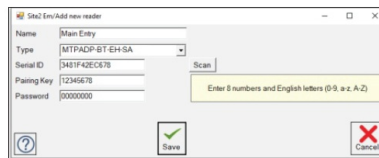
SETTING UP READERS WITH XPR SMART ADMIN WINDOWS SOFTWARE



1. Add site first.
2. Click on the “ADD” reader.
3. Select type “MTPADP-BT-EH-SA”.
4. Scan for readers nearby by clicking on “Scan”. Found readers will be listed (pic.2). Click on “Select”.
5. Add a pairing key between the PC and the Bluetooth reader and a password. (pic. 3)
6. If the pairing is successful, the buttons in the header section will be enabled. (pic.4)



pic. 2



pic. 3



pic. 4

You can download 2 software for Windows: XPR Smart Access and XPR Smart Admin from our website:

Users Software



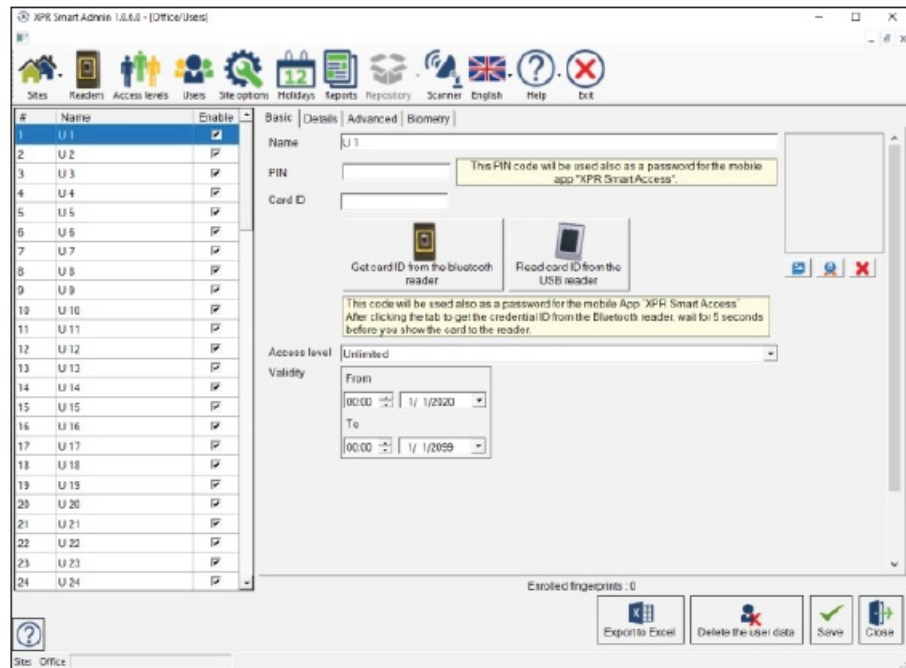
Application for users, allowing them to manage the doors from a distance. (max distance: 10m).



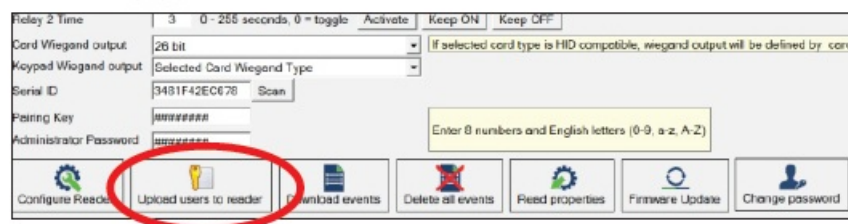
Software for the installation administrator, allowing him/her to program all readers and update them, manage users and their access rights, download events



ADDING USERS



1. Go to Users and select the user. Edit the name directly. Enable it.
2. Put a PIN Code and Card ID. The Card ID can be read directly from the reader or from USB desktop reader.
3. Select the proper Access level and validity period.
4. After this, go to the reader and "Upload users to the reader".



The 2 smartphone apps are available in:




Application for users, allowing them to manage the doors from a distance. (max distance: 10m).



Application for the installation administrator, allowing him/her to program one reader at a time and update it, manage users and their access rights, download events and edit reports. This product herewith complies with the

requirements of EMC directive 2014/30/EU, Radio Equipment Directive 2014/53/EU. In addition, it complies with RoHS2 directive EN50581:2012 and RoHS3 Directive 2015/863/EU.

Documents / Resources

| | |
|---|--|
|  | <p>xpr MTPADP-BT-EH-SA Bluetooth Standalone Keypad with Integrated RFID Reader [pdf]</p> <p>User Manual</p> <p>MTPADP-BT-EH-SA Bluetooth Standalone Keypad with Integrated RFID Reader, MTPADP-BT-EH-SA, Bluetooth Standalone Keypad with Integrated RFID Reader, Integrated RFID Reader, R FID Reader, Reader</p> |
|---|--|

Manuals+.