



## xpr EX7 V2 Standalone Keypad Instruction Manual

[Home](#) » [xpr](#) » xpr EX7 V2 Standalone Keypad Instruction Manual 

### Contents

- 1 xpr EX7 V2 Standalone Keypad
- 2 EX7 V2 Standalone Keypad
- 3 MOUNTING
- 4 WIRING
- 5 PROGRAMMING FLOWCHART
- 6 APPLICATIONS
- 7 Documents / Resources
  - 7.1 References
- 8 Related Posts



**xpr EX7 V2 Standalone Keypad**



## EX7 V2 Standalone Keypad

The EX7 V2 Standalone Keypad is a device designed for secure access control. It features a tamper switch and can be used with 12/24V DC or AC power supplies. The keypad includes memory positions for user codes and relays that can be assigned using the programming flowchart.

### Features

- Secure access control
- Tamper switch
- Can be used with 12/24V DC or AC power supplies
- Memory positions for user codes and relays

### Mounting

The keypad should be mounted using three 4 x 30mm screws and two M3 x 6mm security screws. The mounting hole should be 6mm in diameter. A jumper on the device should be open for normal operation.

### Programming Flowchart

The programming flowchart allows you to assign user codes and relays to memory positions. To assign a user code, enter the master code followed by the memory position and user code. To assign a relay, enter the master code followed by the memory position, relay number, and desired mode of operation.

### Applications

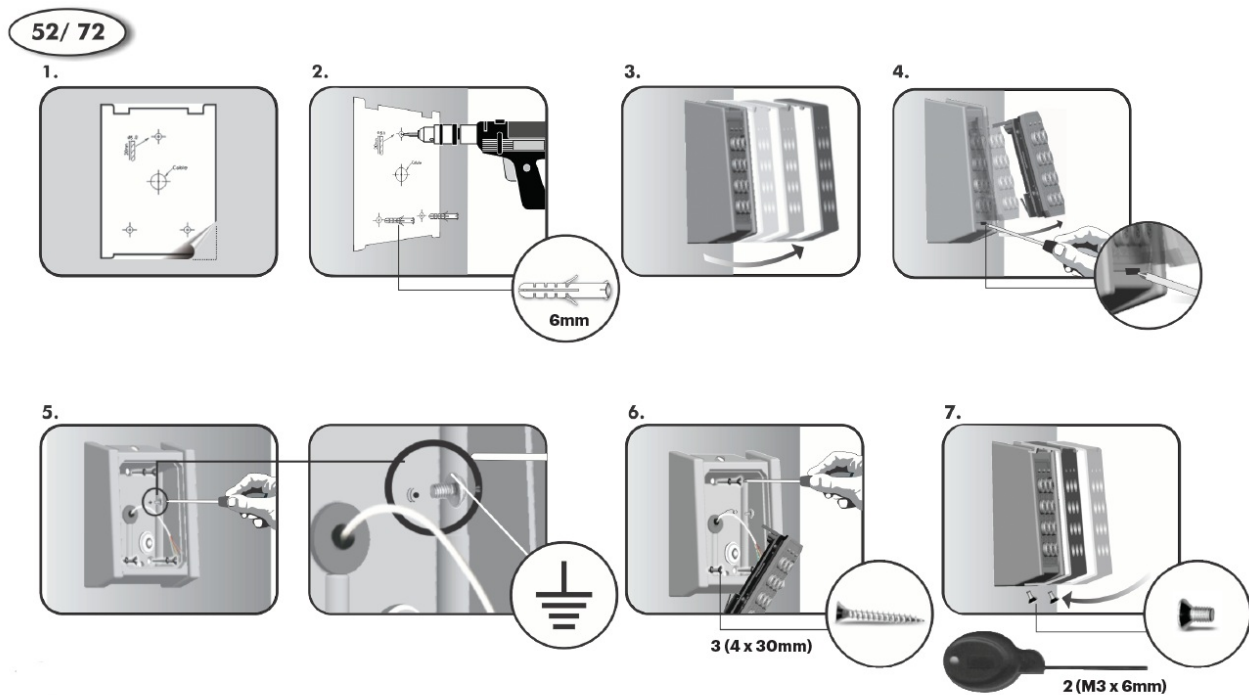
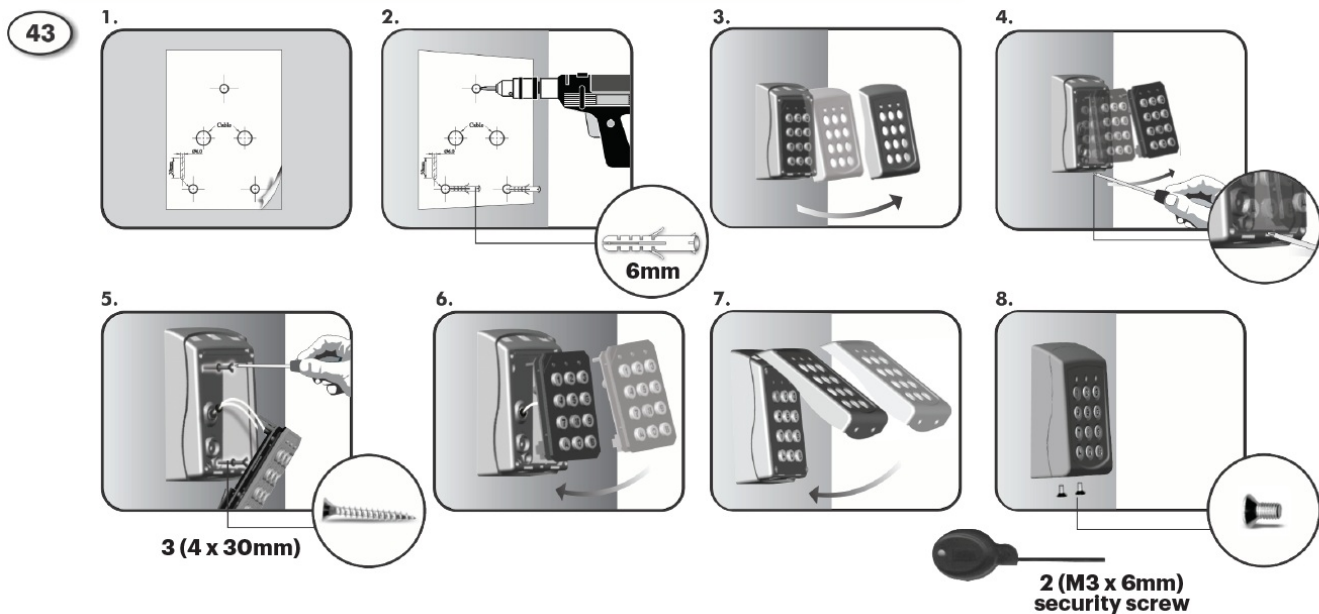
The EX7 V2 Standalone Keypad can be used for a variety of applications including alarm systems, push button access control, blinds, and gates.

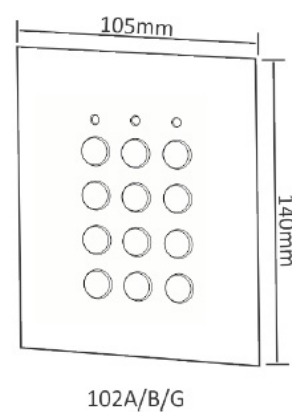
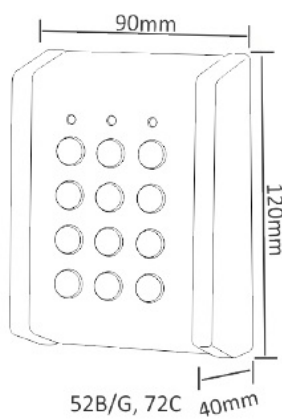
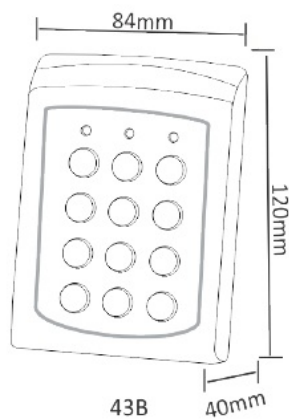
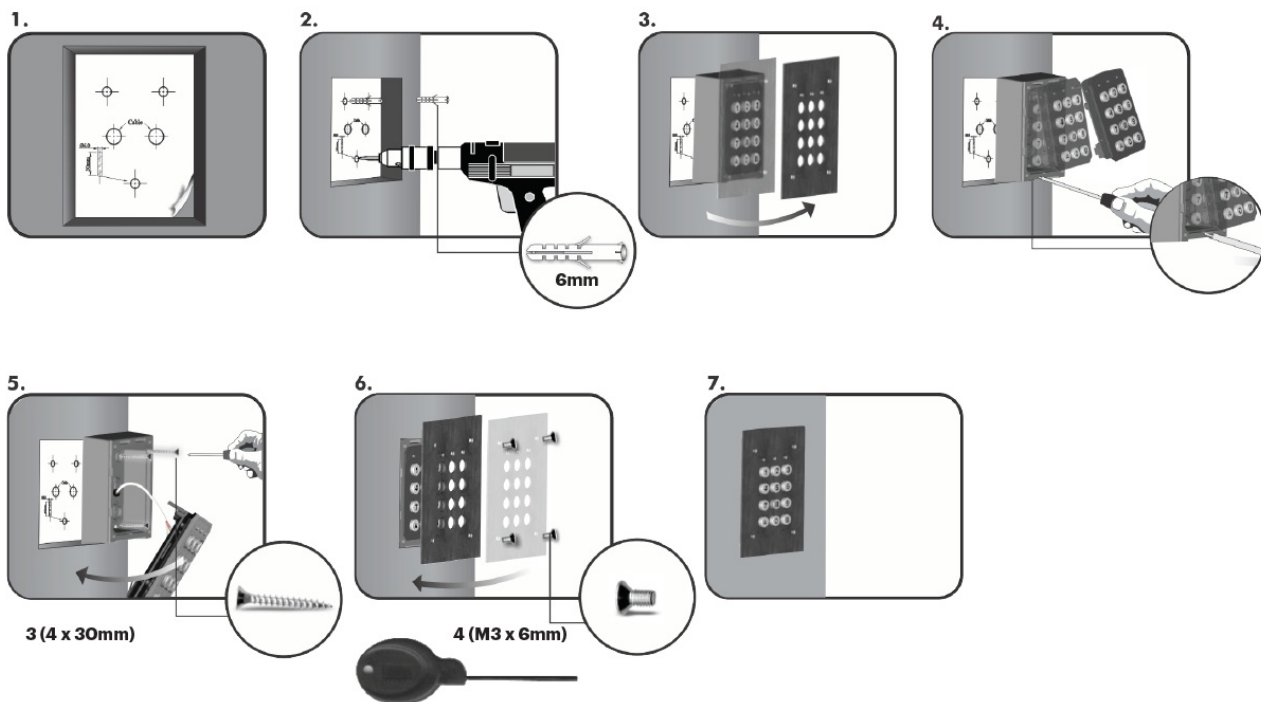
## FEATURES

- Operates on 12/24V AC/DC  
Backlit keys (metal or plastic)
- 99 User codes (1 to 8 digits)
- 30 second lockout after 8 invalid attempts
- 2 free tension LEDs (Red & Green)
- 4 relays (R1/R2/R3/R4: 3A/24V AC/DC)

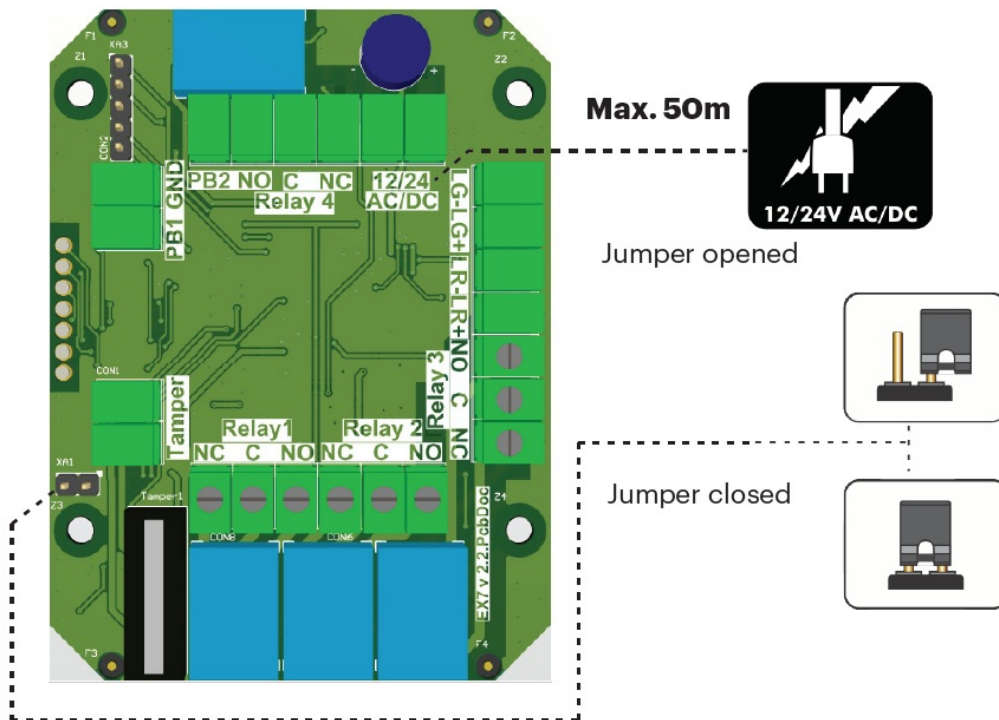
- Relay in latch (00) or pulsed mode (01 to 99 sec)
- 2 Pushbuttons to operate relays
- Current Consumption Standby: 26 mA Maximum: 140 mA
- Dustproof and waterproof (IP65)

## MOUNTING



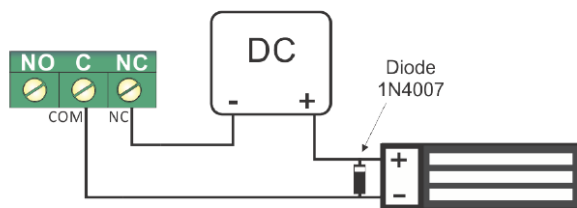
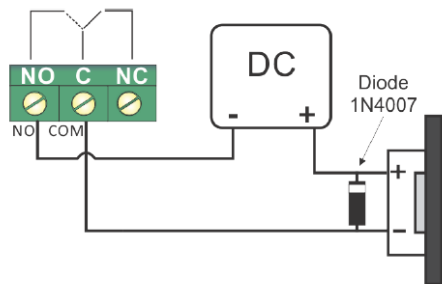


## WIRING



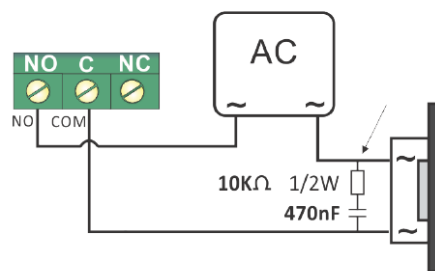
## CONNECTING STRIKE TO RELAYS

### 12/24V DC (CC):



### 12/24V AC (CA):

Capacitor + Resistor



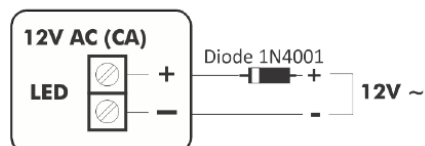
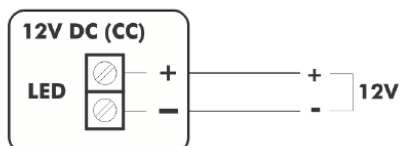
**NO:** Normally open

**C:** Common

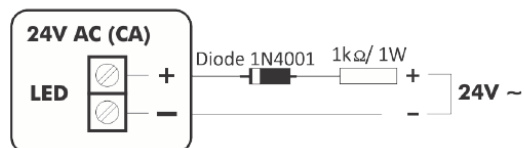
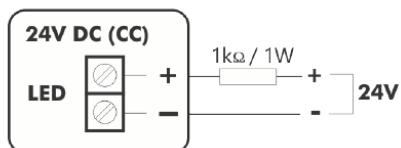
**NC:** Normally closed

## CONNECTING VOLTAGE FREE LEDS

### 12V

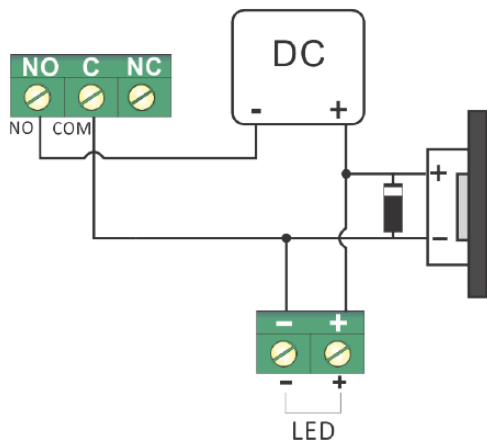


### 24V

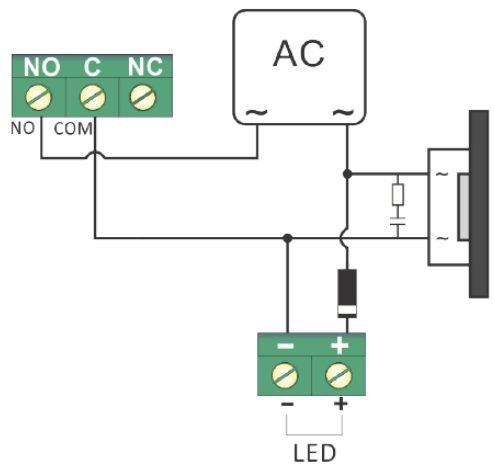


## CONNECTING LEDS FOR RELAY STATUS

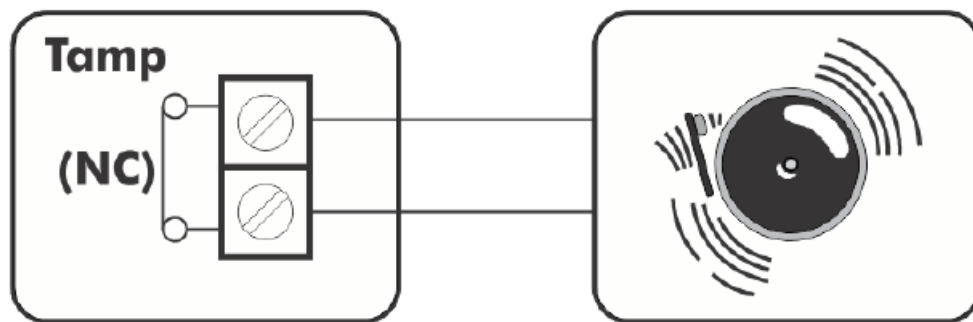
12V DC (CC):



12V AC (CA):

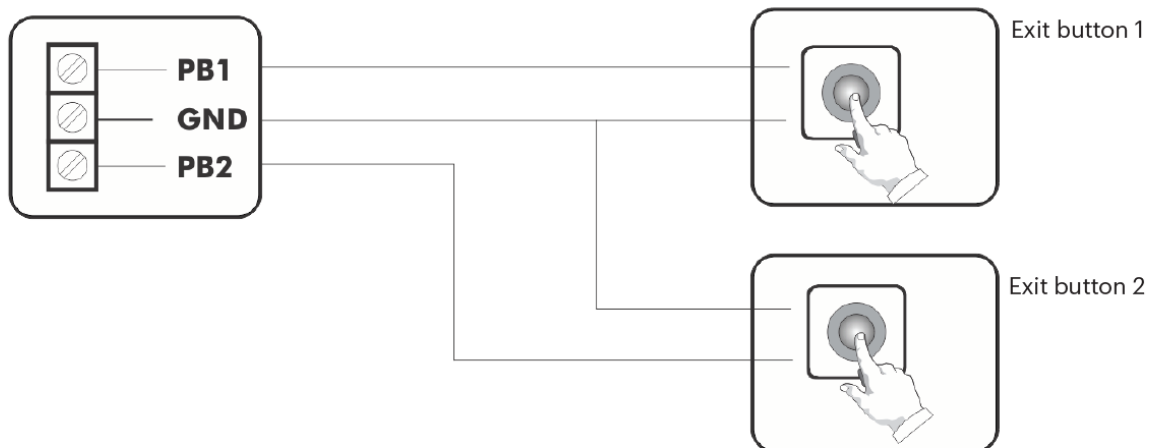


### TAMPER SWITCH

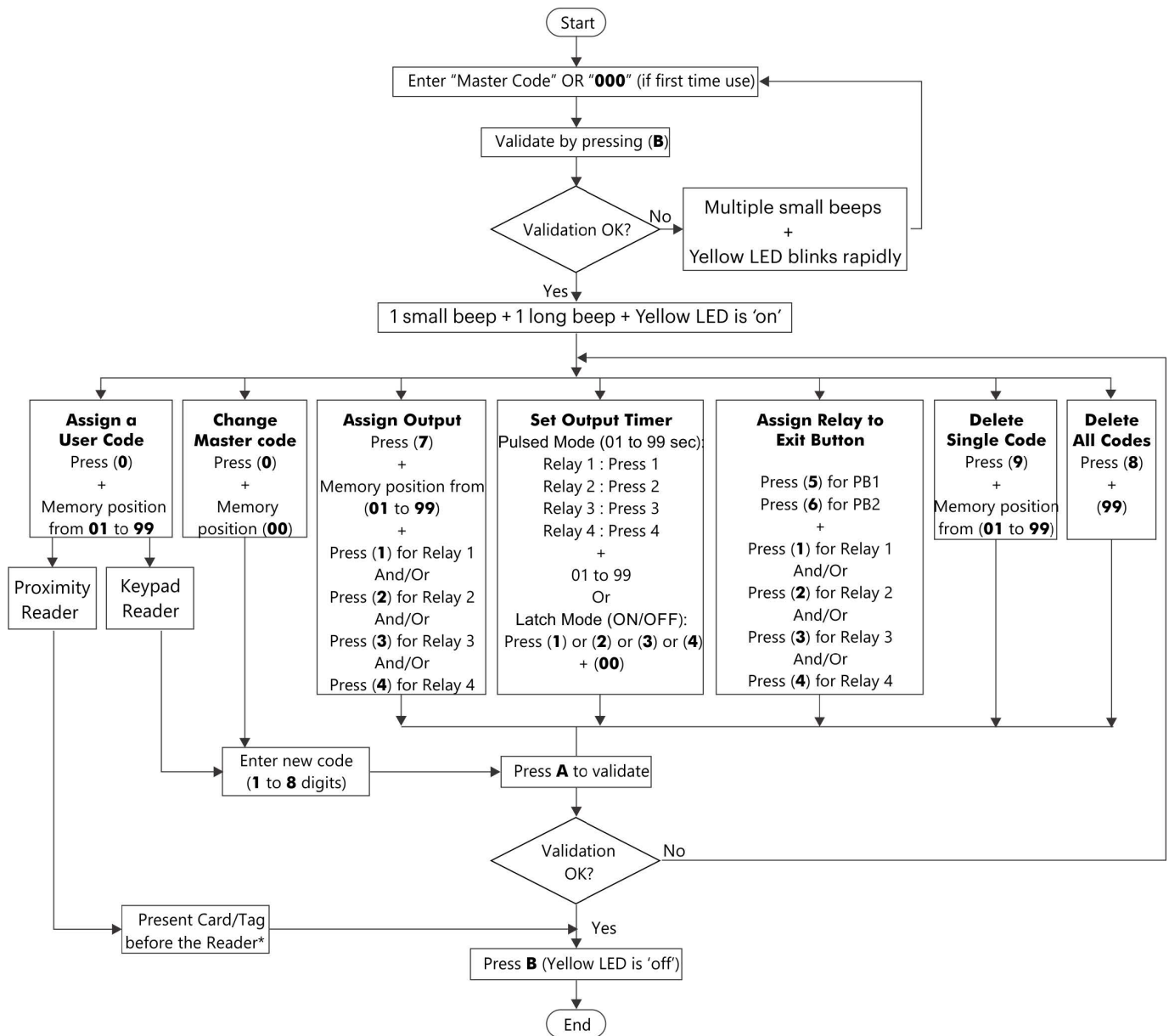


### EXIT BUTTON

EX7



### PROGRAMMING FLOWCHART



## Notes

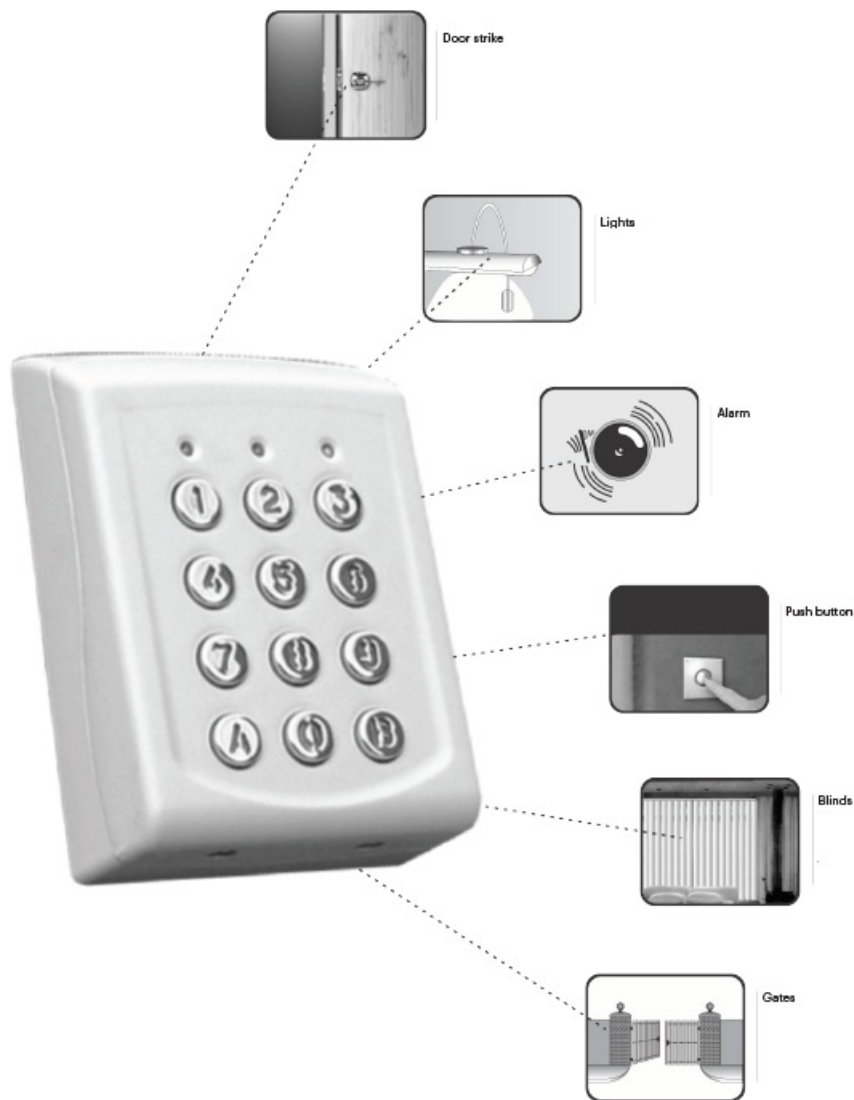
Memory Position for User Code is always 2 digits

\* no need to validate with A

## Assign Examples

- Ex.1: To assign User Code "12345" at Memory Position "5" and Relay 1 (2A) in Latch Mode assuming Master Code = 000  
Pre 000Bss + 0 + 05 + 12345 + A + 7 + 05 + 1 + A + 1 + 00 + A + B.
- Ex. 2: To assign User Code "6789" at Memory Position "6" and Relay 2 that activates for 5 seconds assuming Master Code = 000

## APPLICATIONS



This product herewith complies with requirements of EMC directive 2014/30/EU. In addition it complies with RoHS2 directive EN50581:2012 and RoHS3 Directive 2015/863/EU.

Website: [www.xprgroup.com](http://www.xprgroup.com)

## Documents / Resources



[xpr EX7 V2 Standalone Keypad](#) [pdf] Instruction Manual  
EX7 V2 Standalone Keypad, EX7 V2, Standalone Keypad, Keypad

## References

- [XPR Group - Safe access systems provider](#)