

# xpr group XS- MF-W-X Web Server Controller



## xpr group XS-MF-W-X Web Server Controller Owner's Manual

[Home](#) » [XPR Group](#) » xpr group XS-MF-W-X Web Server Controller Owner's Manual 

### Contents

- [1 xpr group XS-MF-W-X Web Server Controller](#)
- [2 Product Usage Instructions](#)
- [3 FAQ](#)
- [4 PRODUCT INFORMATION](#)
- [5 CONFIGURING](#)
- [6 ASSIGNING THE XSECURE CREDENTIAL TO A USER MANUALLY](#)
- [7 Documents / Resources](#)
  - [7.1 References](#)



xpr group XS-MF-W-X Web Server Controller



## Specifications

- **Product Name:** PROS CS, XS-K-MF-W, XS-K-MF-W-X Keypads, XS-MF-W, XS-MF-W-X Readers
- **Software Version:** PROS CS Software v. 6.2.0.0 or newer
- **Required Items:**
  1. XS-K-MF-W / XS-K-MF-W-X keypads or XS-MF-W / XS-MF-W-X readers
  2. Micro-USB cable (optional)
  3. PROX-USB-X desktop reader PROX-USB – XPR Group (not mandatory)
  4. Xsecure and Mifare DESFire cards or fobs

## Product Usage Instructions

### Configuring the Readers to PROS CS

1. Right-click the reader and select Properties.
2. Click the Basic tab to open the reader configuration.
  1. Select the correct reader type.
  2. Select the entry mode you need.
  3. Set Wiegand type to Wiegand 34.
  4. Click the Configure Reader tab.
3. Connect the reader to the PC using a micro-USB cable.
4. Select appropriate settings based on Xsecure usage or non-usage.

### Assigning Xsecure Credential to a User

In the User ID (Card number) field, enter the first number from the Xsecure card.

### Assigning Credentials with Desktop Reader PROX-USB-X

1. Configure the desktop reader PROX-USB-X to read Xsecure credentials.

1. Connect the desktop reader PROX-USB-X to the PC.
  2. Open the User Management window and set the necessary values.
  3. The reader will now read Xsecure credentials.
2. Read the card with the desktop reader to assign credentials to a user.

### **Assigning Mifare Credential to a User**

1. Configure the desktop reader PROX-USB-X to read Mifare credentials.
  1. Connect the desktop reader PROX-USB-X to the PC.
  2. Open the User Management window and set the necessary values.
  3. The reader will now read Mifare credentials.
2. Read the card with the desktop reader to assign Mifare credentials to a user.

### **FAQ**

#### **Q: What should I do if my PC cannot establish a connection with the reader?**

**A:** Change the micro-USB cable to ensure it supports data transfer. If still not recognized, check for cable issues.

#### **Q: Can I use a separate Mifare DESFire card to configure the reader?**

**A:** Yes, you can use a separate Mifare DESFire card if you want to configure the reader with a card.

### **PRODUCT INFORMATION**

This document describes how to set up the PROS CS, XS-K-MF-W-X, and XS-MF-W-X readers with Xsecure credentials, and XS-K-MF-W and XS-MF-W readers without Xsecure credentials.

#### **Required items:**

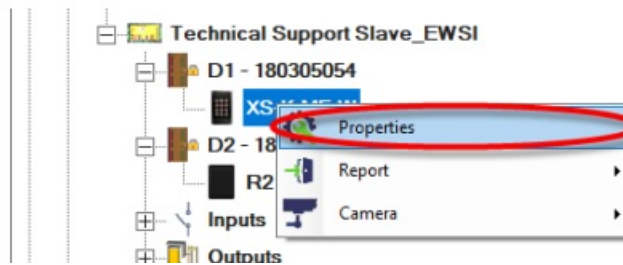
1. XS-K-MF-W / XS-K-MF-W-X keypads or XS-MF-W / XS-MF-W-X readers
2. PROS CS Software v. 6.2.0.0 or newer.
3. Micro-USB cable (optional). Make sure the cable supports data transfer. If the PC cannot establish a connection with the reader, change the cable.
4. PROX-USB-X desktop reader PROX-USB – XPR Group (not mandatory).
5. Xsecure and Mifare DESFire cards or fobs.
6. A separate Mifare DESFire card if you want to configure the reader with a card.



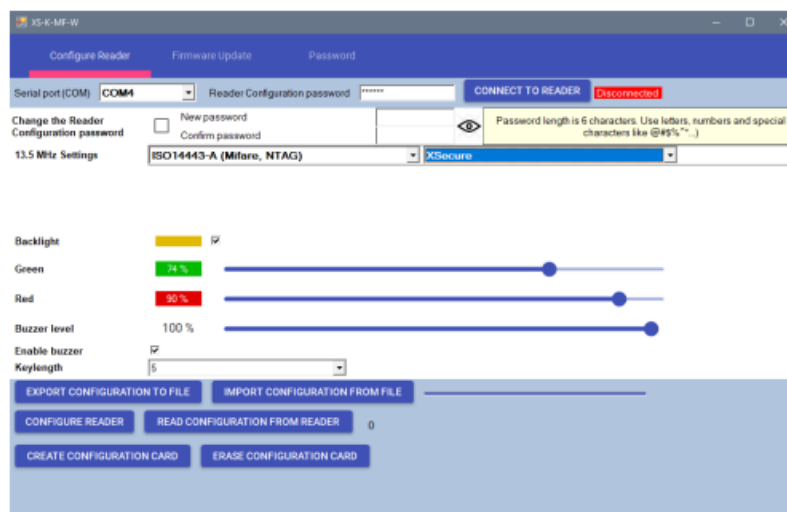
## CONFIGURING

### CONFIGURING THE XS-K-MF-W, XS-K-MF-W-X, XS-MF-W, XS-MF-W-X READERS TO PROS CS

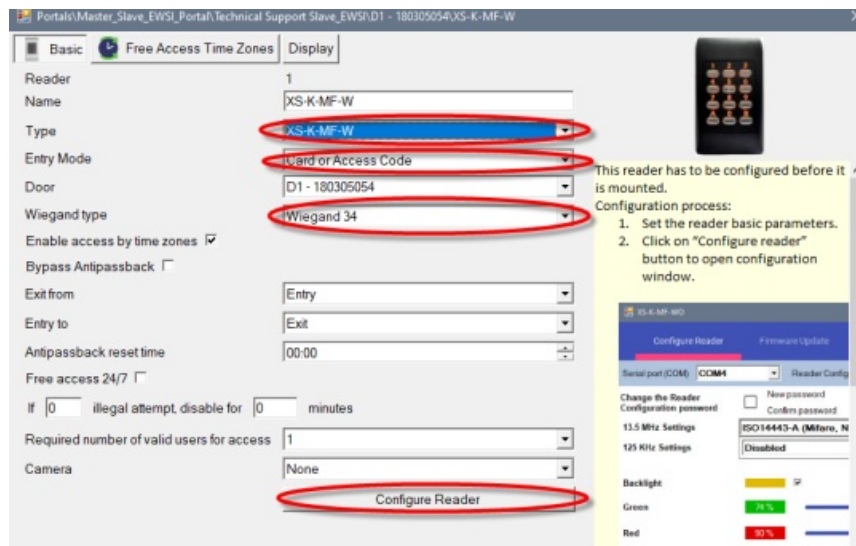
- Right-click the reader and select “Properties”.



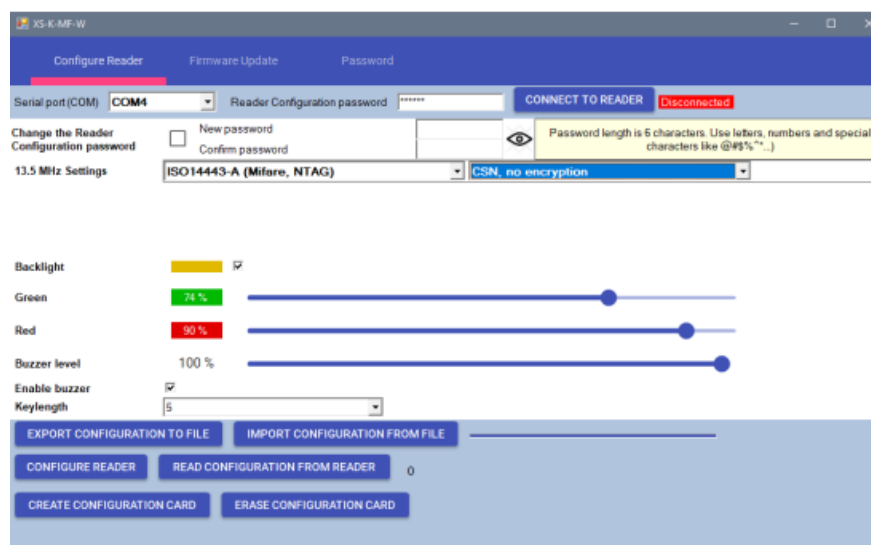
- Select the correct reader type.
- Select the entry mode you need.
- Set Wiegand type to Wiegand 34.
- Click the “Configure Reader” tab.



- If a micro-USB is used for configuring the reader, click the “Configure Reader” tab.
- To configure the reader with a card:
- Connect the desktop reader PROX-USB-X to the PC.
- Place a blank Mifare DESFire card on the desktop reader.
- Click the “Create Configuration card” tab to write the configuration on the card.
- Power ON the reader by 12 V or USB.
- Keep the configuration card for 5 to 10 seconds on the reader until you hear a short and long beep. After this, the reader is configured.
- If you have more readers with the same configuration, just use the same configuration card for all readers.
- If the card cannot be written, try to erase the card with the “ERASE CONFIGURATION CARD” tab.
- Mount the reader and connect it to the Controller.
- Click the “Basic” tab to open the reader configuration, if you use both a reader with Xsecure and a reader without Xsecure.

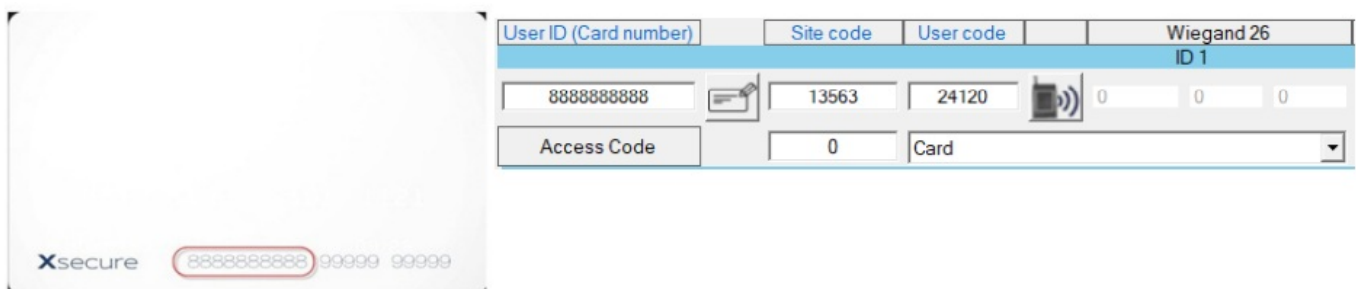


- Connect the reader to the PC using a micro-USB cable. If the reader is recognized by the PC, the “Serial Port (COM)” field will show the communication port where the reader is connected, like “COM4”. If there is no value in the “Serial Port (COM)” field, change the USB cable.
- If you use a reader with Xsecure, select “ISO 14443-A (Mifare, NTAG)” and then select “Xsecure”.
- If you use a reader without Xsecure, select “ISO 14443-A (Mifare, NTAG)” and then select “CSN, no encryption”.



## ASSIGNING THE XSECURE CREDENTIAL TO A USER MANUALLY

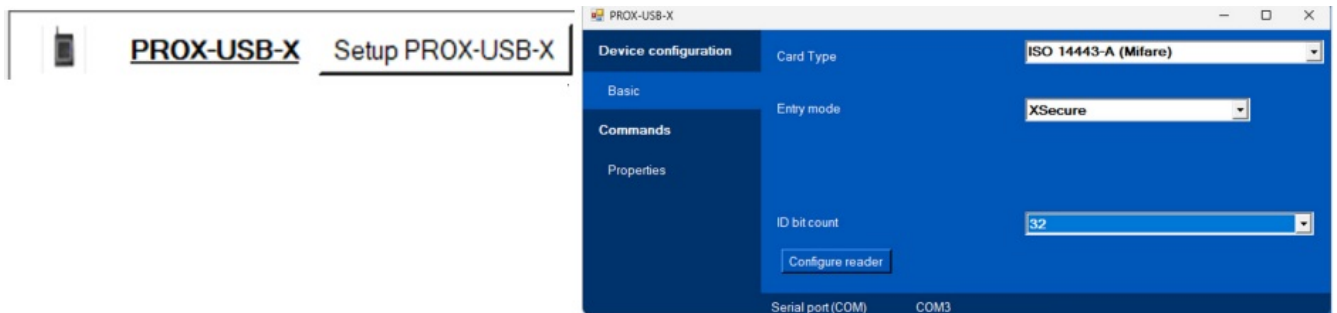
In the “User ID (Card number)” field, enter the first number from the Xsecure card.



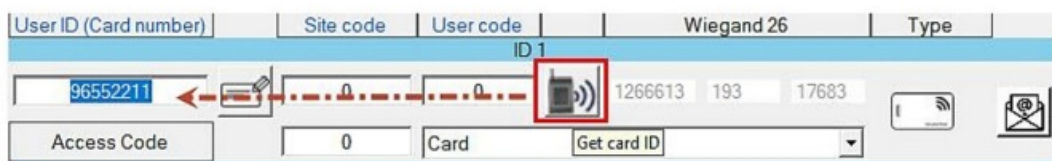
## ASSIGNING THE XSECURE CREDENTIAL TO A USER WITH THE DESKTOP READER PROX-USB-X

- Configure the desktop reader PROX-USB-X to read the Xsecure credentials.
- Connect the desktop reader PROX-USB-X to the PC.

- Open the User management window.
- Click the “Setup PROX-USB-X” tab.
- Set the values as in the image below and click the “Configure reader” tab. Now the reader will read Xsecure credentials.

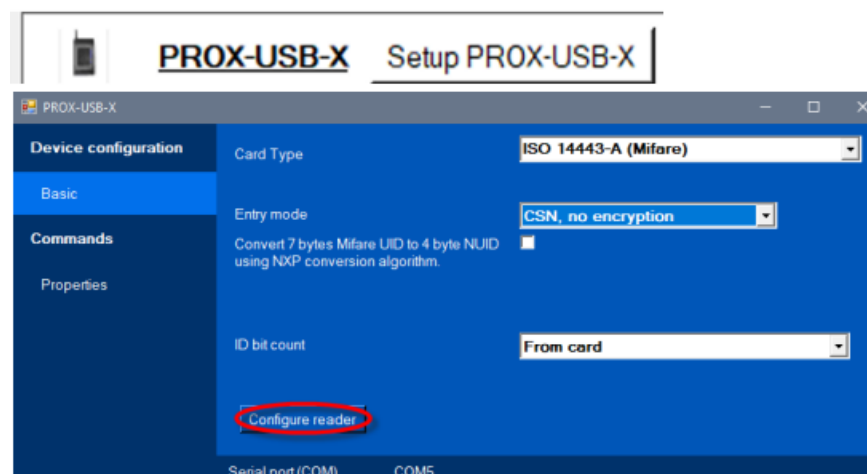


- Read the card with a desktop reader.
- Place the card on the PROX-USB-X desktop reader and click the “Get card ID” icon. The Xsecure ID will be written in the “User ID” field.

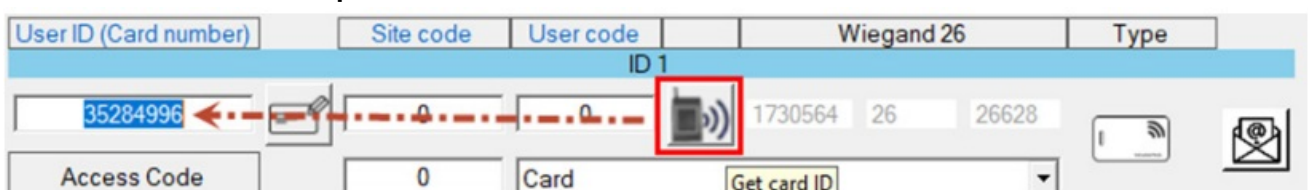


## ASSIGNING THE MIFARE CREDENTIAL TO A USER WITH THE DESKTOP READER PROX-USB-X

- Configure the desktop reader PROX-USB-X to read the Mifare credentials.
- Connect the desktop reader PROX-USB-X to the PC.
- Open the “Users” management window.
- Click the “Setup PROX-USB-X” tab.
- Set the values as in the image below and click the “Configure reader” tab. Now the reader will read Mifare credentials.



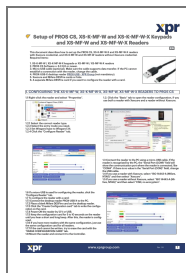
## Read the card with a desktop reader



- Place the card on the PROX-USB-X desktop reader and click the “Get card ID” icon.

- Mifare ID will be written in the “User ID” field.
- [www.xprgroup.com](http://www.xprgroup.com)

## Documents / Resources



[xpr group XS-MF-W-X Web Server Controller](#) [pdf] Owner's Manual  
 XS-K-MF-W, XS-K-MF-W-X, XS-MF-W, XS-MF-W-X, XS-MF-W-X Web Server Controller, XS-M  
 F-W-X, Web Server Controller, Server Controller, Controller

## References

- [XPR Group - Safe access systems provider](#)
- [User Manual](#)

### Manuals+, Privacy Policy

This website is an independent publication and is neither affiliated with nor endorsed by any of the trademark owners. The "Bluetooth®" word mark and logos are registered trademarks owned by Bluetooth SIG, Inc. The "Wi-Fi®" word mark and logos are registered trademarks owned by the Wi-Fi Alliance. Any use of these marks on this website does not imply any affiliation with or endorsement.