



# XPR Group MTPX-RS-EH V2 EM & HID RFID Reader Instruction Manual

[Home](#) » [XPR Group](#) » XPR Group MTPX-RS-EH V2 EM & HID RFID Reader Instruction Manual 

## Contents

- [1 XPR Group MTPX-RS-EH V2 EM & HID RFID Reader](#)
- [2 Product Information](#)
- [3 Product Usage Instructions](#)
- [4 SPECIFICATIONS](#)
- [5 MOUNTING](#)
- [6 WIRING](#)
- [7 VISUAL AND AUDIO SIGNALIZATION](#)
- [8 SOFTWARE SETTINGS](#)
- [9 Documents / Resources](#)
  - [9.1 References](#)
- [10 Related Posts](#)



**XPR Group MTPX-RS-EH V2 EM & HID RFID Reader**



## Product Information

The MTPX-RS-EH V2 is a reader with RS-485 output that uses proximity technology (125 KHz) and is compatible with WS4 series. It supports EM4100 and HID compatible credentials and has a read range of up to 6 cm. The reader has an internal buzzer for a sound indicator and LED indicators (Red, Green, and Orange) for visual indication. It is rated for outdoor use with an IP65 environmental rating and can operate within 5% – 95% relative humidity, non-condensing. The power supply required for the reader is 9 – 14 VDC, 110 mA.

## Product Usage Instructions

To mount the reader, use the provided rubber gasket and optional mounting base. The reader also comes with a ferrite core to reduce electromagnetic interference (EMI). Wrap the wires around the ferrite core (1 turn) before connecting them to the RS-485 A and RS-485 B terminals. You can connect up to two readers per RS-485 line, and if more than 80 m of cabling is needed, termination resistors (120 ohm) may be required at both ends of the RS-485 line.

When using the reader with WS4 series, the readers for Doors 1.0 and 2.0 must be at address 0, and those for Doors 1.1 and 2.1 must be at address 1. For doors equipped with two readers, one must be at address 0, and the other must be at address 1. The recommended cabling for the reader is Multiconductor cable 2 twisted pair with shielding with a maximum length of 80 m. The cable shielding should be connected to the fixing clamp of the access unit.

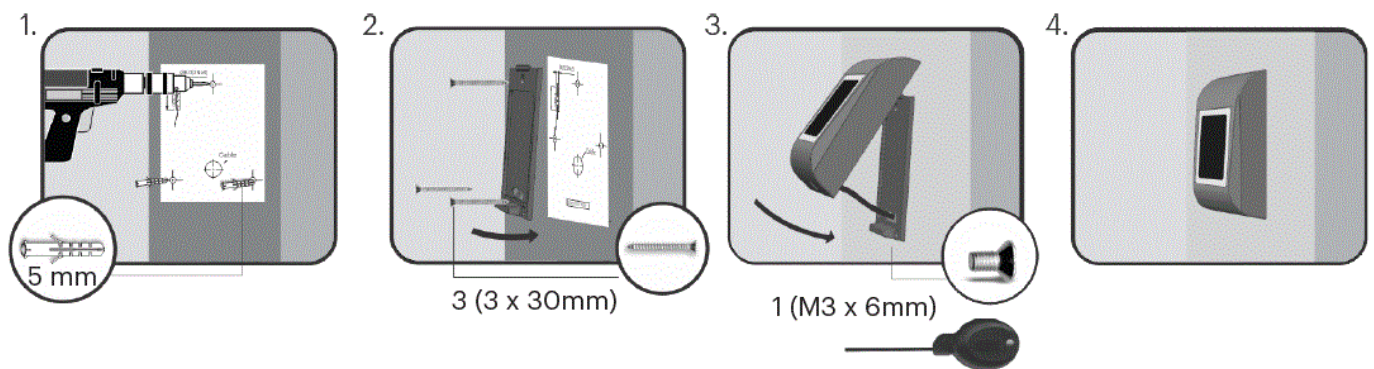
For more information, visit the XPR Group website at [www.xprgroup.com](http://www.xprgroup.com).

## SPECIFICATIONS

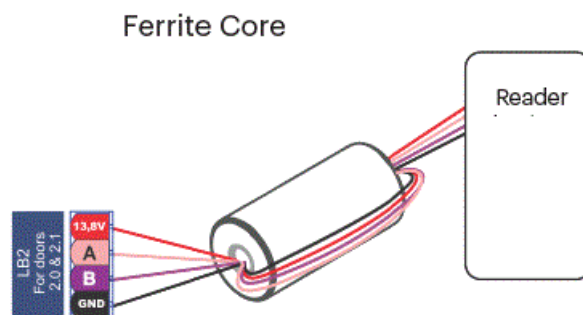
- **Technology:** Proximity (125 KHz)
- **Interface:** RS-485, WS4 series compatible
- **Supported credentials:** EM4100, HID Compatible
- **Read range:** Up to 6 cm
- **Power supply:** 9 – 14 VDC, 110 mA

- **Sound Indicator:** Internal buzzer
- **LED Indicators:** Red, Green and Orange (Red + Green)
- **Environmental rating:** Outdoor, IP65
- **Operating humidity:** 5% – 95% relative humidity, non-condensing
- **Operating temperature:** -20°C 50°C
- **Mounting:** Surface mount
- **Panel connection:** Cable 0.5m
- **Dimensions (mm):** 92 x 51 x 27

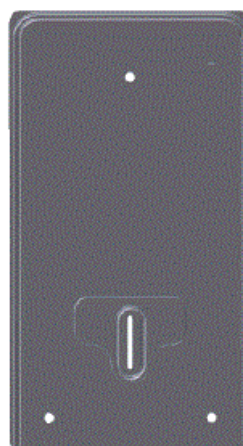
## MOUNTING



## Ferrite Core



## Rubber gasket



- Front



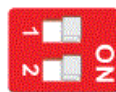
- Back



- Mounting base (optional)

1. Wrap the wires around the ferrite core (1 turn).
2. The ferrite core is provided with the kit and it is used to reduce the EMI.

## WIRING

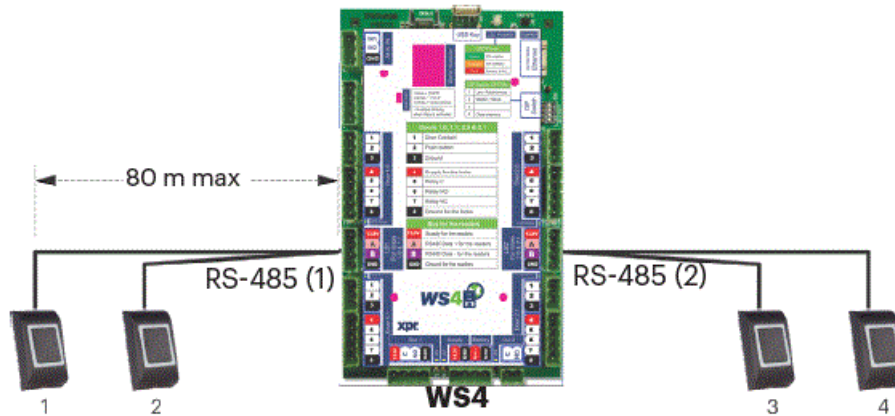


1. Reader address
2. RS-485 termination

### Connection reader to controller WS4



## Connection two readers per RS-485 line



- The readers for Doors 1.0 and 2.0 must be at address 0 and those for Doors 1.1 and 2.1 at address 1. For doors equipped with 2 readers, one must be at address 0 and the other at address 1.

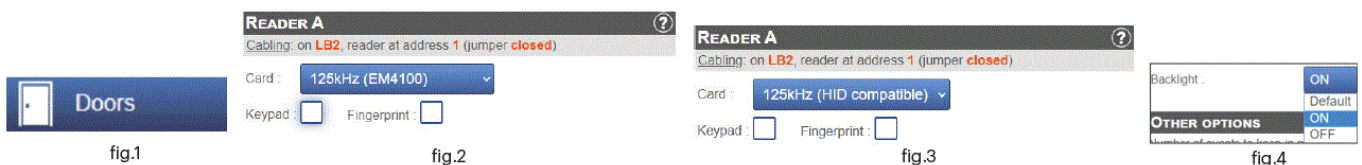
## Recommended cabling

Multiconductor cable 2 twisted pair with shielding. Max length: 80 m. The cable shielding will be connected to the fixing clamp of the access unit. If more than 80 m. are needed, then termination resistors(120 ohm) may be required at both ends of the RS-485 line, while taking into consideration the lengths proposed on our website.

## VISUAL AND AUDIO SIGNALIZATION

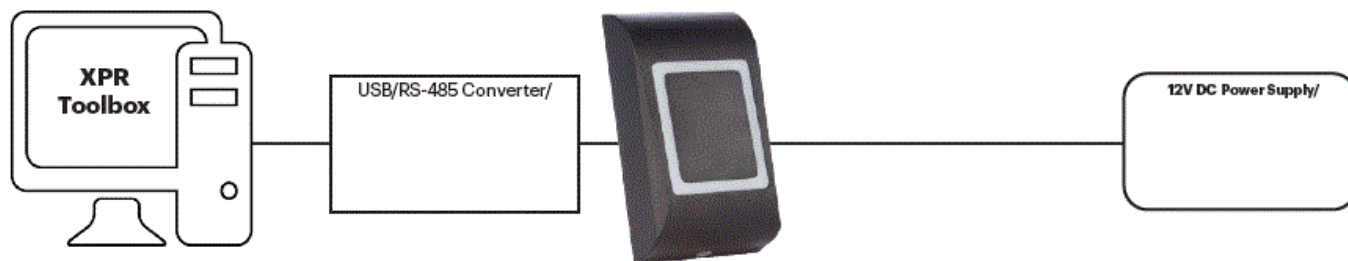
- **Access denied/Break-in/Too long opened/Reader off-line/Reader tamper/Door contact tamper:** Red, fast blinking
- **Pre-alarm:** Red, fast blinking, Continuous beep
- **Mantrap/Forbidden period:** Red ON
- **Emergency/Unlocked/Free period:** Green, fast blinking
- **Access allowed/Lock ON (toggle mode):** Green ON
- **Last person leaves the building:** Multiple beeps

## SOFTWARE SETTINGS



Go to Doors, select the Reader(fig.2) and then select EM4100 or HID Compatible for Card. (fig.3) While off line, red LED blinks fast and buzzer beeps continuously. Once communication is established, the red LED and the buzzer stop. Green LED starts to blink continuously. If you want to stop the green LED, go to Settings/System Options and select for the backlight ON or OFF (not default) fig.4

## CONNECTION TO PC




- To update the firmware, run the XPR Toolbox and select "WS4 readers" and "MTPX-RS-EH V2" and click on "Open" tab.
- Follow the instruction in the software to set up or update firmware.

This product herewith complies with requirements of EMC directive 2014/30/EU, Radio Equipment Directive 2014/53/EU. In addition it complies with RoHS2 directive EN50581:2012 and RoHS3 Directive 2015/863/EU.

[www.xprgroup.com](http://www.xprgroup.com)

## Documents / Resources

	<p><b><a href="#">XPR Group MTPX-RS-EH V2 EM &amp; HID RFID Reader</a></b> [pdf] Instruction Manual MTPX-RS-EH V2 EM HID RFID Reader, MTPX-RS-EH V2, EM HID RFID Reader, RFID Reader , Reader</p>
--	---

## References

- [XPR Group - Safe access systems provider](#)