



## XPOtool 61937 Drill Bit Sharpener Instruction Manual

[Home](#) » [XPOtool](#) » XPOtool 61937 Drill Bit Sharpener Instruction Manual 



Operation Manual  
Drill Bit Sharpener  
61937



Illustration similar, may vary depending on model



## Contents

- [1 61937 Drill Bit Sharpener](#)
- [2 Introduction](#)
- [3 Technical specifications](#)
- [4 Safety regulations and cautions](#)
- [5 Commissioning](#)
- [6 Exploded view and parts list](#)
- [7 Disposal regulations](#)
- [8 Documents / Resources](#)
  - [8.1 References](#)
- [9 Related Posts](#)

## 61937 Drill Bit Sharpener

Read and follow the operating instructions and safety information before using for the first time.

Technical changes reserved!

Due to further developments, illustrations, functioning steps, and technical data can differ insignificantly.

Updating the documentation

If you have suggestions for improvement or have found any irregularities, please contact us.

The information contained in this document may alter at any time without previous notice. It is prohibited to copy or spread any parts of this document in any way without prior written allowance. All rights reserved.

The WilTec Wildanger Technik GmbH cannot be held accountable for any possible mistakes in this operating manual, nor in the diagrams and figures shown.

Even though the WilTec Wildanger Technik GmbH has undergone biggest possible efforts to ensure that the operating manual is complete, faultless, and up to date, mistakes cannot be entirely avoided. If you should find a mistake or wish to make a suggestion for improvement, we look forward to hearing from you.

Send an e-mail to: [service@wiltec.info](mailto:service@wiltec.info)

or use our contact form: <https://www.wiltec.de/contacts/>

The most recent version of this manual in various languages can be found in our online shop via:

<https://www.wiltec.de/docsearch>

Our postal address is:

WilTec Wildanger Technik GmbH Königsbenden 12 52249 Eschweiler Germany

To return orders for exchange, repair, or other purposes, please use the following address. Attention! To allow for a smooth execution of your complaint or return, it is important to contact our customer service team before returning the goods.

Returns Department WilTec

Wildanger Technik GmbH Königsbenden 28 52249 Eschweiler

E-mail: [service@wiltec.info](mailto:service@wiltec.info)

Tel: +49 2403 555920

Fax: +49 2403 5559215

## Introduction

Thank you for purchasing this quality product. To minimise the risk of injury we urge that our clients take some basic safety precautions when using this device. Please read the operation instructions carefully and make sure you have understood its content. Keep these operation instructions safe.

### Danger signs



Wear safety goggles. Sparks generated during working or splinters, chips, and dust emitted by the device can cause loss of sight.



Wear hearing protection. The impact of noise can cause damage to hearing.



Wear protective gloves. You must wear gloves at all times when handling the drill bits.

### Technical specifications

Input voltage (V)		230
Frequency (Hz)		50
Power consumption (W)		80
Max. rotation speed (/min)		4200
Drill diameter (mm)		3-13
Max. sanding disc diameter (mm)		60
Sanding disc	Diameter (mm)	79.
	Width (mm) Grit	11.
		170-200
	Bore diameter (mm)	18
Weight (kg)		12

### Save this manual!

You will need the manual for the safety warnings and cautions, assembly instructions, operating procedures, maintenance procedures, troubleshooting, parts list, and diagram.

### Safety regulations and cautions

**WARNING:** When using electric tools, machines, or equipment, basic precautions should always be followed to reduce the risk of fire, electric shock, and personal injury.

#### Safety warnings

**Read all instructions before using this tool and keep them at a safe place for further reference.**

- Keep the work area clean. Cluttered areas invite injuries.
- Observe the work area conditions. Do not use machines or power tools in damp, wet, or poorly lit locations. Do not expose them to rain. Keep work area well-lit. Do not use electrically powered tools in the presence of flammable gasses or liquids.
- Keep children away. Children must never be allowed in the work area. Do not let them handle machines, tools, or extension cords.
- Store idle equipment. When not in use, tools must be locked up in a dry place to prevent rust from forming. Always lock up tools and keep out of reach of children.
- Do not force the tool. It will work better and with more safety at the rate for which it was intended. Do not use inappropriate attachments to exceed the capacities of the tool.
- Use the right tool for the job. Do not attempt to force a small tool or attachment to do the work of large industrial tool. Do not use a tool for a purpose for which it was not intended.
- Dress properly. Do not wear loose clothing or jewellery, as they can be caught in moving parts. Protective, electrically non-conductive clothes, and non-skid footwear are recommended when working. Wear restrictive hair covering to contain long hair.
- Use eye and ear protection. Always wear approved chemical splash goggles when working with chemicals. Always wear approved impact safety goggles at other times. Wear a full-face shield if you are producing metal filings or wood chips. Wear an approved dust mask or respirator when working around metal, wood, chemical dusts, and mists.
- Do not abuse the power cord. Do not yank it to disconnect it from the socket. Do not carry tools by the cord.
- Do not overreach. Always keep proper footing and balance. Do not reach over or across running machines.
- Maintain tools with care. Keep tools sharp and clean for better and safer performance. Follow instructions for lubricating and changing accessories. Inspect tool cords periodically and, if damaged, have them repaired by an authorized technician. The handles must always be kept clean, dry, and free from oil and grease.
- Disconnect the device from the power supply. Unplug when not in use, before servicing, and when changing accessories.
- Remove adjusting keys and wrenches. Form a habit of checking that keys and adjusting wrenches are removed from the tool or machine work surface before plugging it in.
- Avoid unintentional starting. Be sure the switch is in the off position when not in use and before plugging in. Do not carry any tool with your finger on the trigger, whether it is plugged in or not.
- Outdoor extensions cords. When the equipment is operated outdoors, use only extension cords intended for outside use.
- Stay alert. Watch what you are doing, use common sense. Do not operate any tool when you are tired.
- Check damaged parts. Before using any tools, any part that appears damaged should be carefully checked to determine that it will operate properly and perform its intended function. Check for alignment and binding of moving parts; any broken parts or mounting fixtures; and any other condition that may affect proper operation. Any part that is damaged should be properly repaired or replaced by a qualified technician. Do not use the tool if any switch does not turn on and off properly.
- Guard against electric shock. Prevent body contact with grounded surfaces such as pipes, radiators, and refrigerator enclosures.
- Replacement parts and accessories. When servicing, use only identical replacement parts. Use of any other parts will void the warranty. Only use accessories intended for use with this tool.
- Do not operate tool if under the influence of alcohol, drugs, or medication. Read warning labels on



prescriptions to determine if your judgment or reflexes might be impaired because of medication. If there is any doubt, do not operate the tool.

- Keep the tool away from liquids. This tool is designed for dry sharpening operations only.
- Be careful of bits when sharpening. Bits will become hot. Be careful when handling; allow tips to cool for some time before storing.
- The sharpening head may become hot while you use the tool. This is a normal condition and no cause for alarm. Be careful when handling.

#### Voltage warnings

- Make sur that the plug fits your local socket. The normal voltage of 230 V/50 Hz requires an appropriate plug. Never try to plug a 110 V tool into a 230 V circuit (or vice-versa) or serious complications will arise, including possible injury to the operator. The plugs and socket have completely different shapes to prevent bad plugging.
- Do not modify your plug in any way. If you have any doubts, contact a qualified electrician.

#### Commissioning

	<p>1. Take hold of the blade positioner (37), release the blade holder (38) by turning the locknut (41). Put the drill bit into the blade positioner (37).</p>
	<p>2. Press the button (2) until it makes the spring leaf (4) expand. Put the hold accessory (42) into the fixing shelf (7) until the blade positioner (37) gets stuck in the fixing shelf (7) at correct position.</p>



3. Adjusting the drill bit position, make the top of the drill bit touch the terminal (6) firmly; the spring leaf (4) should pinch the groove of drill bit.



4. Rotate the locknut (41) and make the blade holder (38) pinch the drill bit firmly.



5. Pull out the hold accessory (42) and mount it in the stand socket (36). CAREFUL: Make sure that the heave on the blade positioner (37) inserts into the groove on the stand socket (36), move the positioner for blade from side to side, and begin to sharpen. When there is no grinding sound between the grinding wheel and the drill, pull out the accessory (35) and turn it by 180° and then conduct grinding; the procedure is the same as above mentioned.

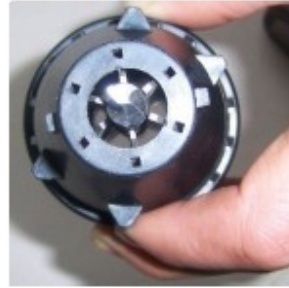


6. Place the accessory (35) on the spacer (14), facing the back angle of the drill, and turn the accessory (35) to the left and to the right; conduct grinding. On condition that there is no grinding sound between the grinding wheel and the drill, pull out the accessory (35) and turn it by 180° and then conduct grinding; the procedure is the same as above mentioned; the operation is finished.

**Before grinding**



**After grinding**



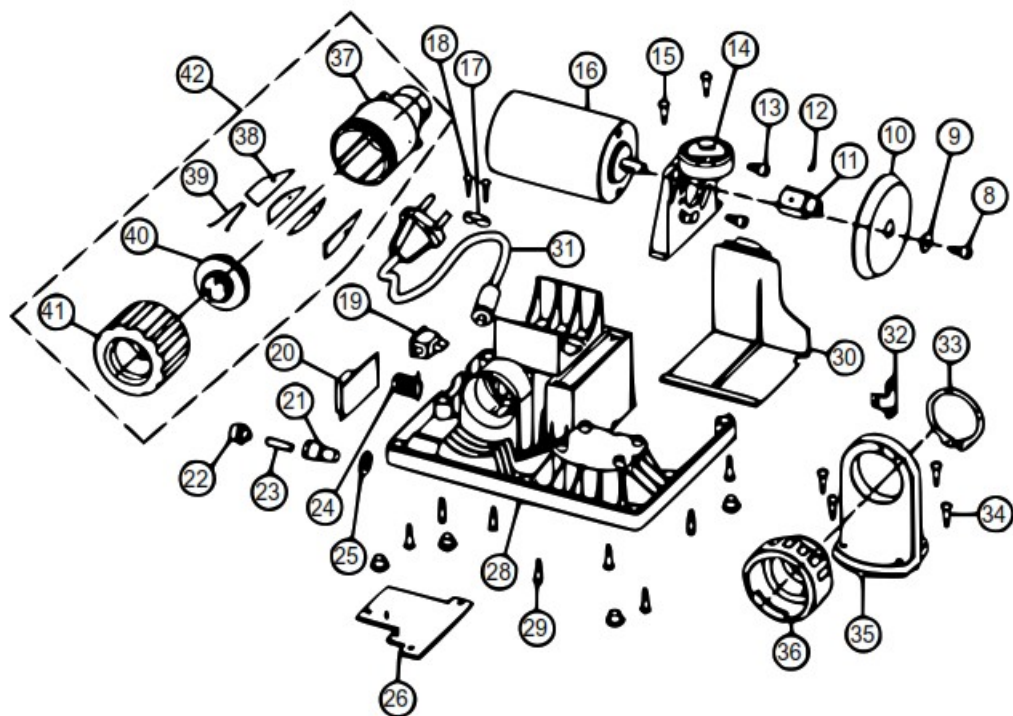
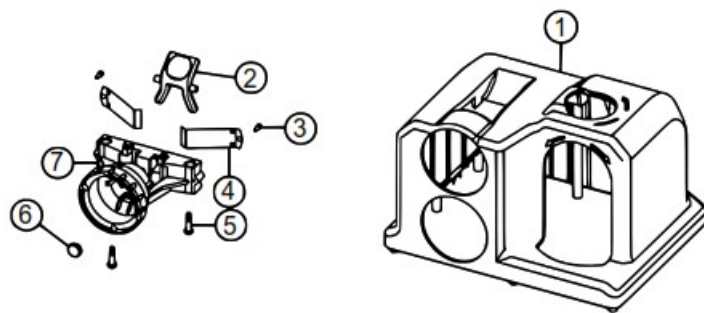
**NOTES:**

- The machine only can be operated if it is grounded correctly.
- The machine only can be started if safety is ensured.
- Other objects or human body should not touch the grinding wheel to avoid accidents and injury.

**Cleaning**

- Make sure to keep the surface of your unit free of grit, dirt, and grease. Use soapy water or nontoxic solvents only. Do not use petroleum-based solvents.
- Always keep the air vents free of foreign matter!

**Exploded view and parts list**





N2	Name	Qty.	N2	Name	Qty.
1	Top housing	1	22	Nut for fuse	1
2	Button	1	23	Fuse	1
3	Screw	2	24	Inductance	1
4	Spring leaf	2	25	Locknut for fuse block	1
5	Screw	2	26	Cover	1
6	Terminal	1	27	Cushion	4
7	Fixing shelf	1	28	Base	1
8	Screw	2	29	Screw	11
9	Pad	1	30	Dust cap	1
10	Grinding wheel	1	31	Cord	1
11	Connector	1	32	Connector board	1
12	Screw	1	33	Clamp spring	1
13	Screw	2	34	Screw	4
14	Positioner	1	35	Bracket	1
15	Screw	2	36	Stand socket	1
16	Motor	1	37	Blade positioner	1
17	Wire restraining	1	38	Blade holder	6
18	Screw	2	39	Steel spring	6
19	Switch	1	40	Transition tube	1
20	PCB	1	41	Locknut	1
21	Fuse block	1	42	Hold accessory to 35–39	

### Carefully read the following

The manufacturer and/or distributor has provided the parts diagram in this manual as a reference only. Neither the manufacturer nor distributor makes any representation or warranty of any kind to the buyer that he or she is qualified to replace any parts of the product. In fact, the manufacturer and/or distributor expressly states that all repairs and parts replacements must only be undertaken by certified and licensed technicians of the manufacturer or an authorised service partner and not by the buyer. The buyer assumes all risk and liability arising out of his or her repairs to the original product or replacement parts thereto, or arising out of his or her installation of replacement parts thereto.

### Disposal regulations

EU guidelines regarding the disposal of scrap electric appliances (WEEE, 2012/19/EU) were implemented in the law related to electrical and electronic equipment and appliances.

All WilTec electric devices that fall under the WEEE regulations are labelled with the crossed-out wheeled waste bin logo. This logo indicates that this electric equipment must not be disposed with the domestic waste.

The company WilTec Technik GmbH has been registered in the German registry EAR under the WEEE registration

number DE45283704.

Disposal of used electrical and electronic appliances (intended for use in the countries of the European Union and other European countries with a separate collection system for these appliances). The logo on the article or on its packaging points out that this article must not be treated as normal household waste but must be disposed to a recycling collection point for electronic and electrical waste equipment. By contributing to the correct disposal of this article you protect the environment and the health of your fellow men. Environment and health are threatened by inappropriate disposal. Material recycling helps reduce the consumption of raw materials.



Additional information on recycling this article can be provided by your local community, municipal waste disposal facilities, or the store where you purchased the article.

Address:

WilTec Wildanger Technik GmbH Königsbenden 12 / 28 D-52249 Eschweiler


#### Important notice:

The reprint or reproduction, even of excerpts, and any commercial use, even in part, of this instruction manual require the written permission of WilTec Wildanger Technik GmbH.

<https://www.XPOtool.com>

The Tool Experts  
Item 61937

## Documents / Resources

	<p><a href="#">XPOtool 61937 Drill Bit Sharpener</a> [pdf] Instruction Manual 61937 Drill Bit Sharpener, 61937, Drill Bit Sharpener, Bit Sharpener, Sharpener</p>
---	---

## References

- [WilTec - Ihr Online Händler für Haus, Garten, Werkstatt & Freizeit](#)