



[Home](#) » [XPG](#) » **XPG DDR4 RGB Memory Module Instruction Manual** 

XPG DDR4 RGB Memory Module Instruction Manual





INSTALLING A M.2 SSD ON A DESKTOP PC



The cover product image is for illustration purposes only. This manual is applicable to all XPG M.2 SSD products.

Contents [[hide](#)]

[1 BEFORE INSTALLATION](#)

[2 INSTALLATION](#)

[3 Documents / Resources](#)

[3.1 References](#)

BEFORE INSTALLATION

1. GATHER THE THINGS YOU'LL NEED

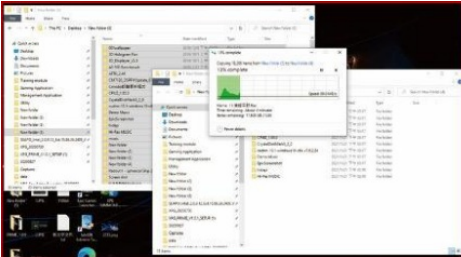
PC, Phillips screwdrivers, and XPG M.2 SSD

*Please use a standard Phillips screwdriver (3.5mm) for disassembling the case; and a smaller Phillips screwdriver for installing the M.2 solid state drive as it uses screws with a diameter of 1.85-1.98mm



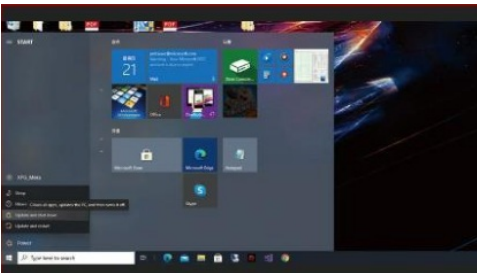
2. BACK UP YOUR DATA

Make sure to backup the important data on your PC to an external device, such as an external HDD, before starting installation.



3. POWER OFF YOUR PC

After backing up your data, power off your PC to avoid data loss or damage to other components during installation.



4. SWITCH OFF THE POWER SWITCH AND UNPLUG POWER CORD

This action is necessary to discharge residual power that can damage your PC and its components.

*The battery removal step applies only to laptops when it's possible to remove the battery. To see how to remove the battery, refer to your user manual.

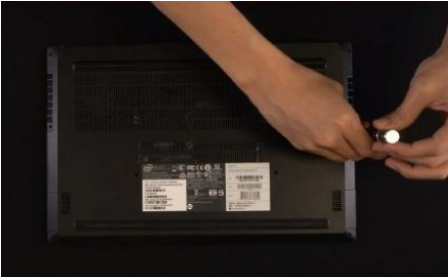


INSTALLATION

1. REMOVE YOUR PC'S BACK PLATE

Use your standard Phillips screwdriver to remove the screws from the back plate.

*If you are unsure how to do this, refer to your user manual

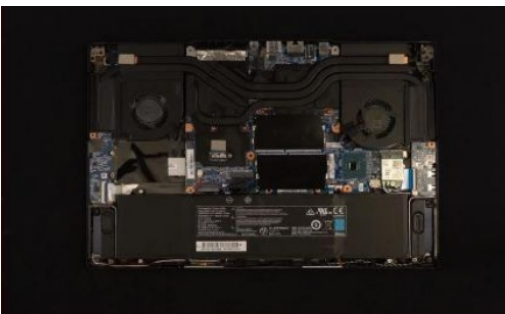


2. LOCATE THE M.2 PCIe SLOT AND CONFIRM THERE ARE SCREWS

Locate the M.2 PCIe slot, ensure the SSD will fit and confirm there are screws present.

*The location of slots may vary by PC. Please check your PC's user manual for more information.

**Generally speaking, the screws that secure the SSD in place will be installed on the motherboard when the laptop is shipped from the factory.



3. ALIGN THE M.2 SLOT AND INSERT THE SOLID STATE DRIVE

Use your small Phillips screwdriver to remove the screws on the motherboard. Align the notches in the SSD with the ridges in the PCIe slot, then insert at a an angle. Give it a final push to ensure it is securely in place.

*The slot has a foolproof design. Please insert the SSD in the direction corresponding to the pins on the solid state drive and the slot. Do not insert it forcibly to avoid damage to the product.



4. FASTEN THE SCREWS TO SECURE THE SSD

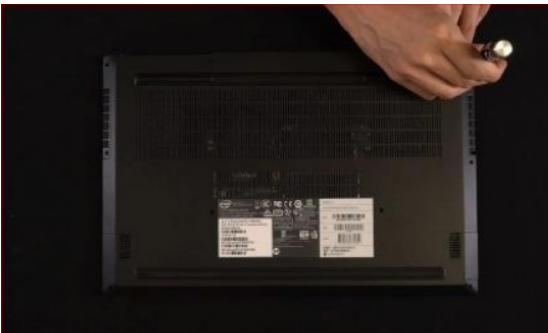
Use your small Phillips screwdriver to secure the SSD into place.

*Do not overtighten the screws

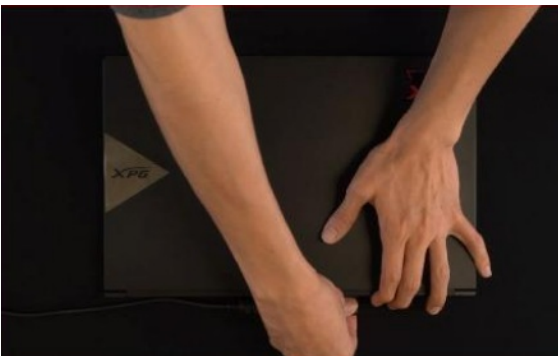


5. SECURE THE BACK PLATE INTO PLACE

*Do not overtighten the screws as it may cause damage



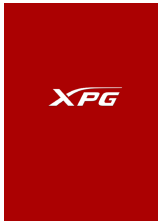
6. PLUG IN THE POWER CORD AND POWER ON THE PC TO COMPLETE INSTALLATION



CUSTOMER SERVICE AND TECHNICAL SUPPORT Contact Us:

<https://www.xpg.com/en/support/xpg?tab=ContactUs>

Documents / Resources



[XPG DDR4 RGB Memory Module \[pdf\]](#) Instruction Manual

DDR4 RGB Memory Module, DDR4, RGB Memory Module, Memory Module

References

- [XPG è"ç»œæ^'ä»¬](#)
- [XPG Kontakt](#)
- [XPG Contactar con Nosotros](#)
- [XPG Contact et enquÃ^ate](#)
- [XPG āŠā•ā..ā^ā.ā](#)
- [XPG ì—°ë'½ì²~](#)
- [XPG Contacte-nos](#)
- [XPG ĐšĐ¾Đ½Ñ,Đ°Đ°Ñ,Ñ](#)
- [XPG è_ç¹«æ^'â€](#)
- [User Manual](#)

DDR4, DDR4 RGB Memory Module, Memory Module, RGB Memory Module,

XPG XPG

—Previous Post

[XPG HURRICANE MAG 120 ARGB PWM Magnetic Fan User Guide](#)

Leave a comment

Your email address will not be published. Required fields are marked *

Comment *

Name

Email

Website

Save my name, email, and website in this browser for the next time I comment.

Post Comment

Search:

e.g. whirlpool wrf535swhz

Search

[Manuals+](#) | [Upload](#) | [Deep Search](#) | [Privacy Policy](#) | [@manuals.plus](#) | [YouTube](#)

This website is an independent publication and is neither affiliated with nor endorsed by any of the trademark owners. The "Bluetooth®" word mark and logos are registered trademarks owned by Bluetooth SIG, Inc. The "Wi-Fi®" word mark and logos are registered trademarks owned by the Wi-Fi Alliance. Any use of these marks on this website does not imply any affiliation with or endorsement.