

[Skip to content](#)

Manuals+

User Manuals Simplified.



XP-PEN How to setup express keys on Windows? User Manual

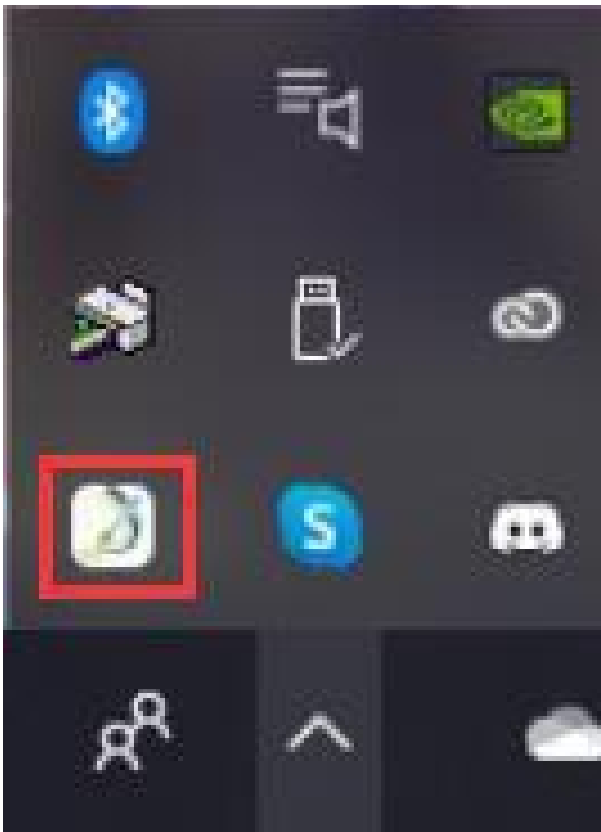
[Home](#) » [XP-PEN](#) » XP-PEN How to setup express keys on Windows? User Manual



XP-PEN

How to setup express keys on Windows?

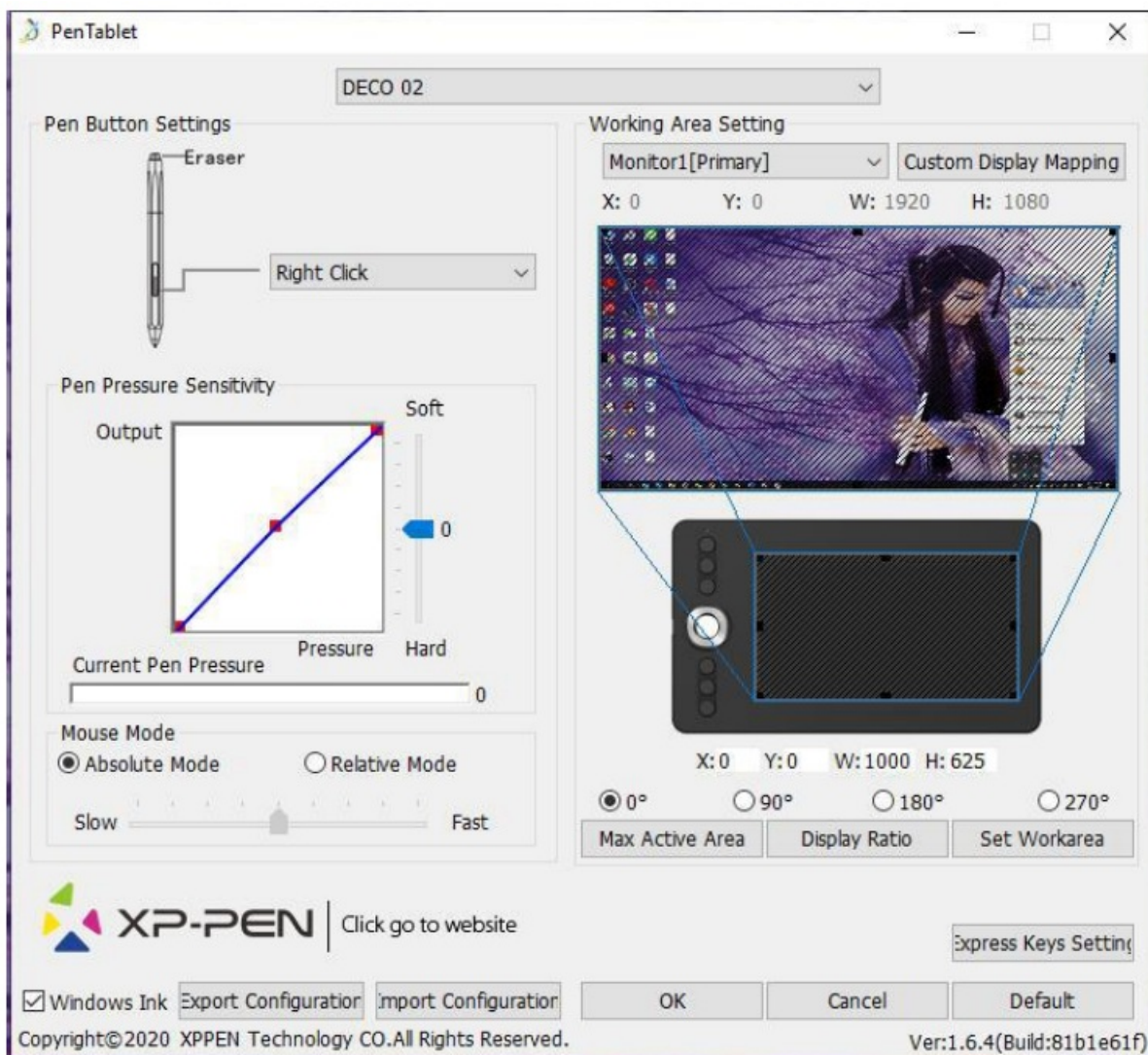
The first thing you need to do is open up your PenTablet Settings from your System Tray.



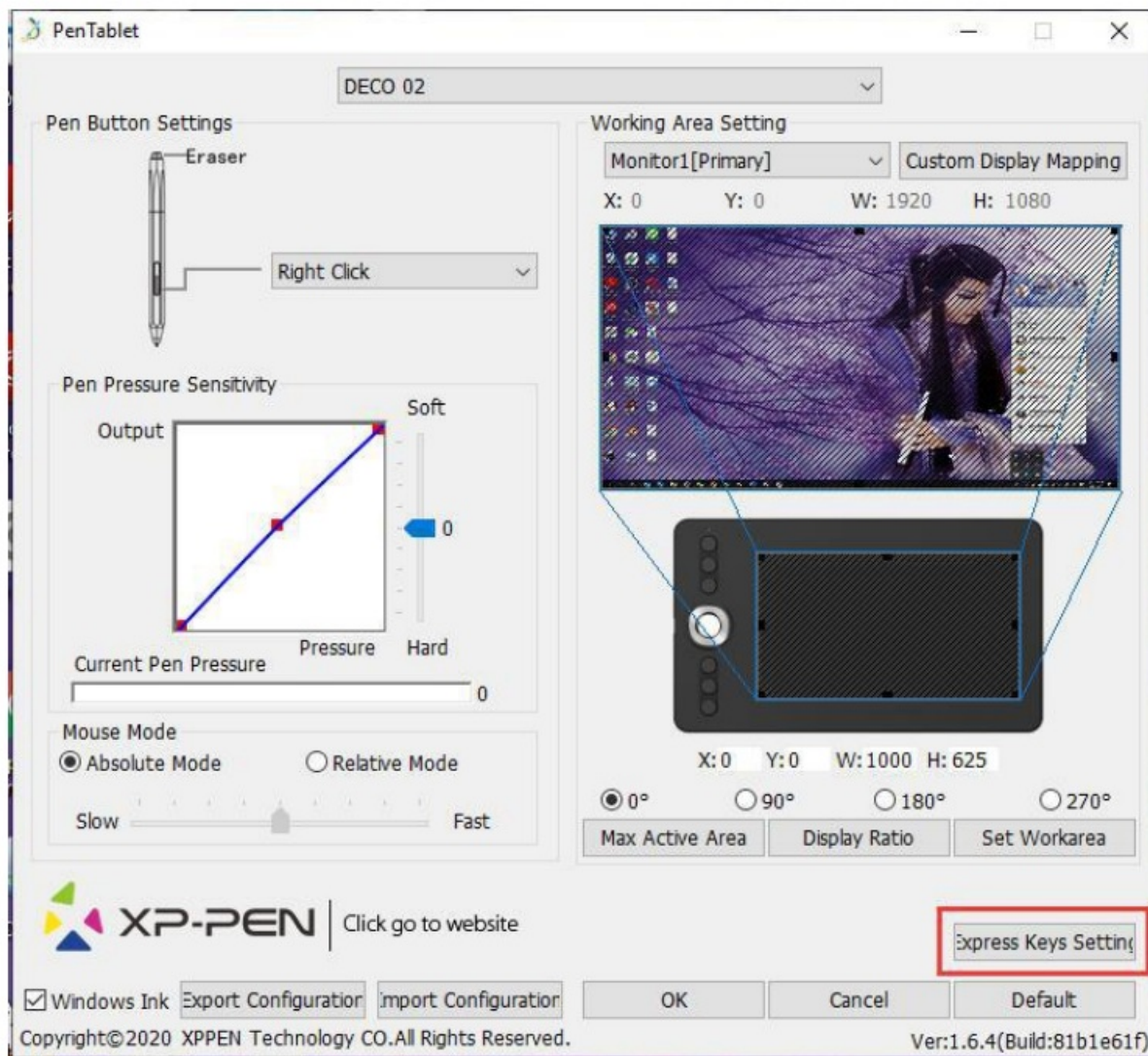
If you don't see the icon there after plugging in your tablet, try double clicking the PenTablet icon on your desktop first and then check the system tray again. Opening the PenTablet settings from the desktop will always automatically minimize it to the system tray.



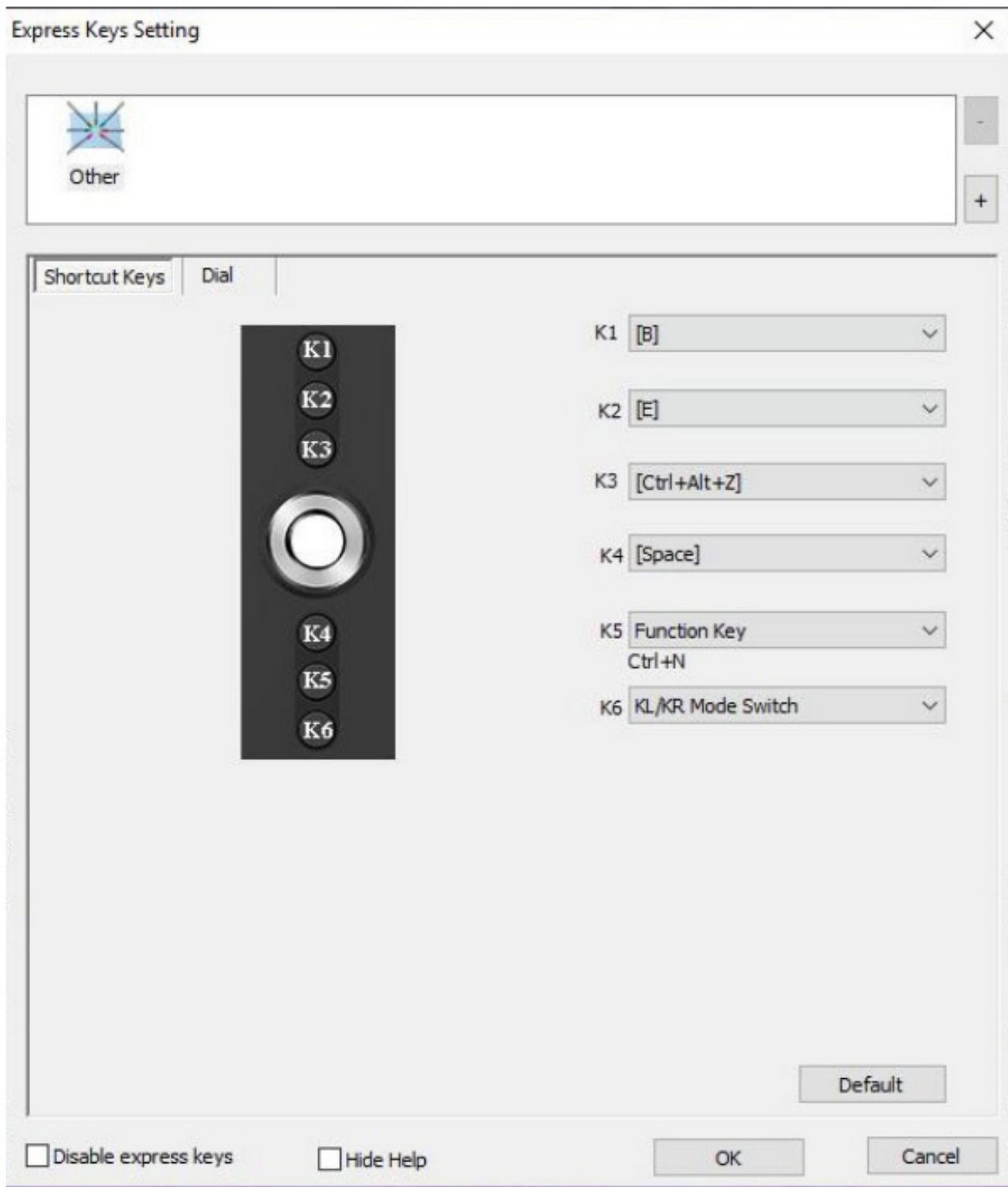
This is what your PenTablet Settings will look like:



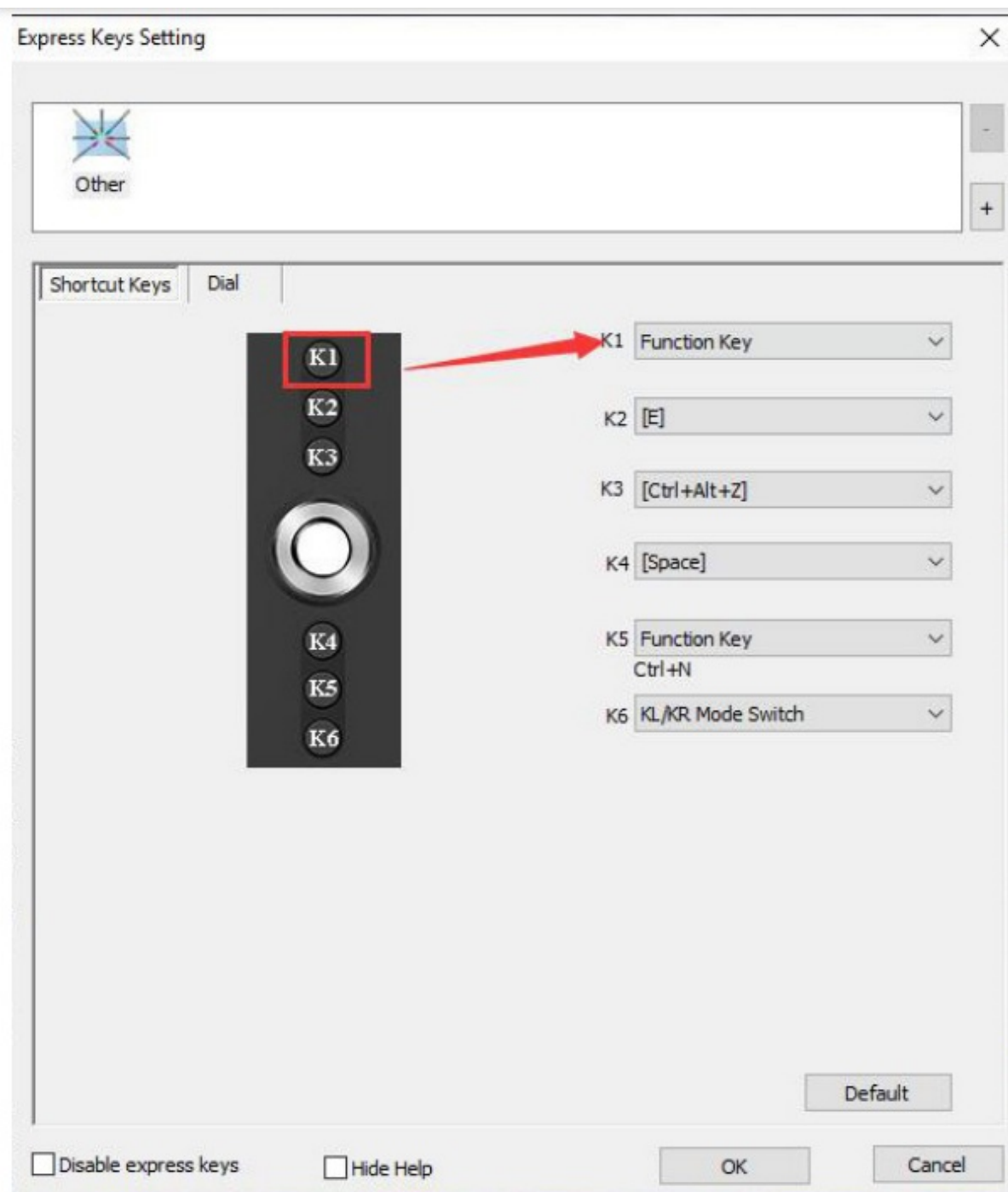
From here you can click on “Express Keys Settings” to customize your tablet’s keys.



This is what your Express Keys window looks like, here you can configure all the Express Keys and the Scroll Wheel (if your tablet has one).



Depending on your tablet you will have more or less options here. Each selection represents an express key on your tablet.



Once you click on the drop down list that belongs to the key you want to configure you will have 3 options to choose from.

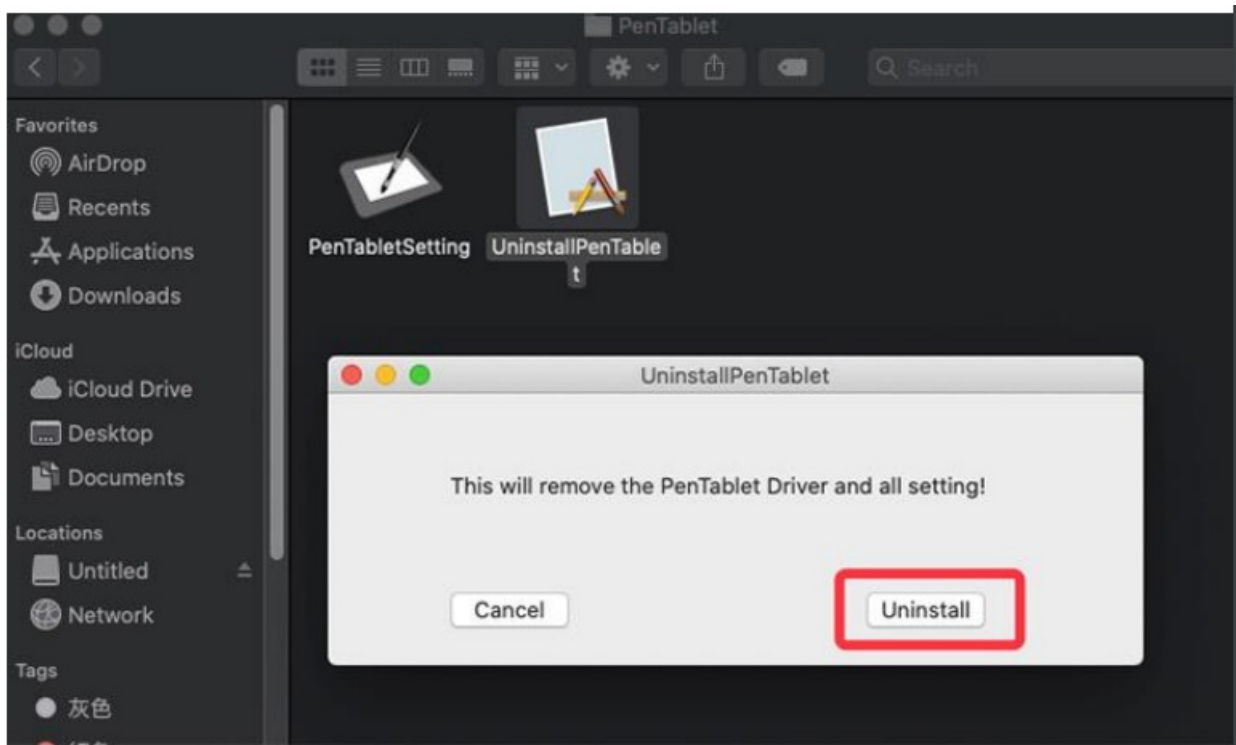
Open Tablet Settings: This is for when you want to set a certain key to open the PenTablet Settings each time you press it.

Run The Program: This is to set a key to open a certain program of you choosing when pressing it.

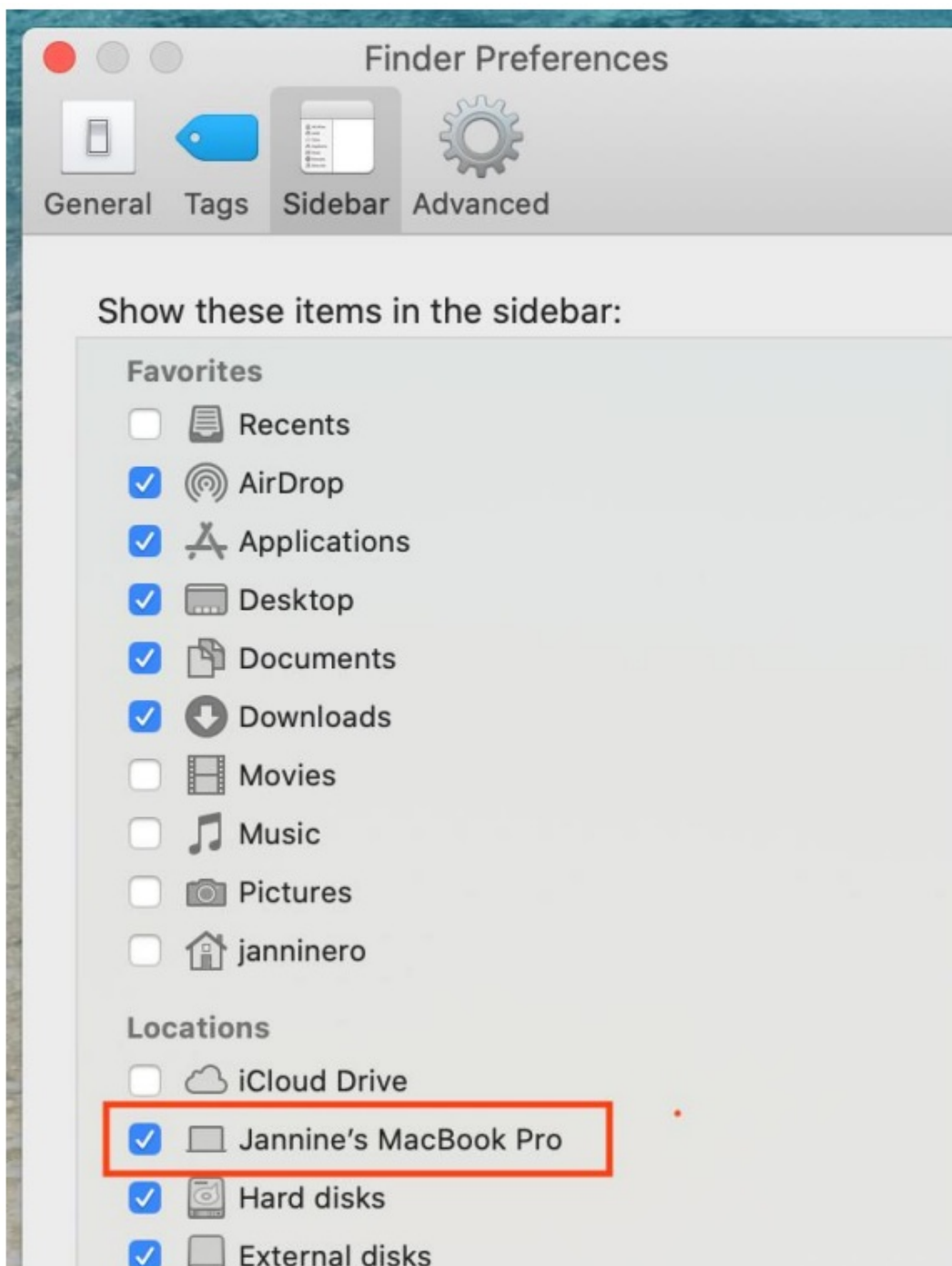
Function Key: This is where you can program any special command or a combination of key commands like Ctrl + Z (Undo) for example.

How to installed XP-Pen driver in Catalina (10.15)?

1. Go to the Application Folder and make sure uninstall all of PenTablet drivers in the PenTablet Folder.



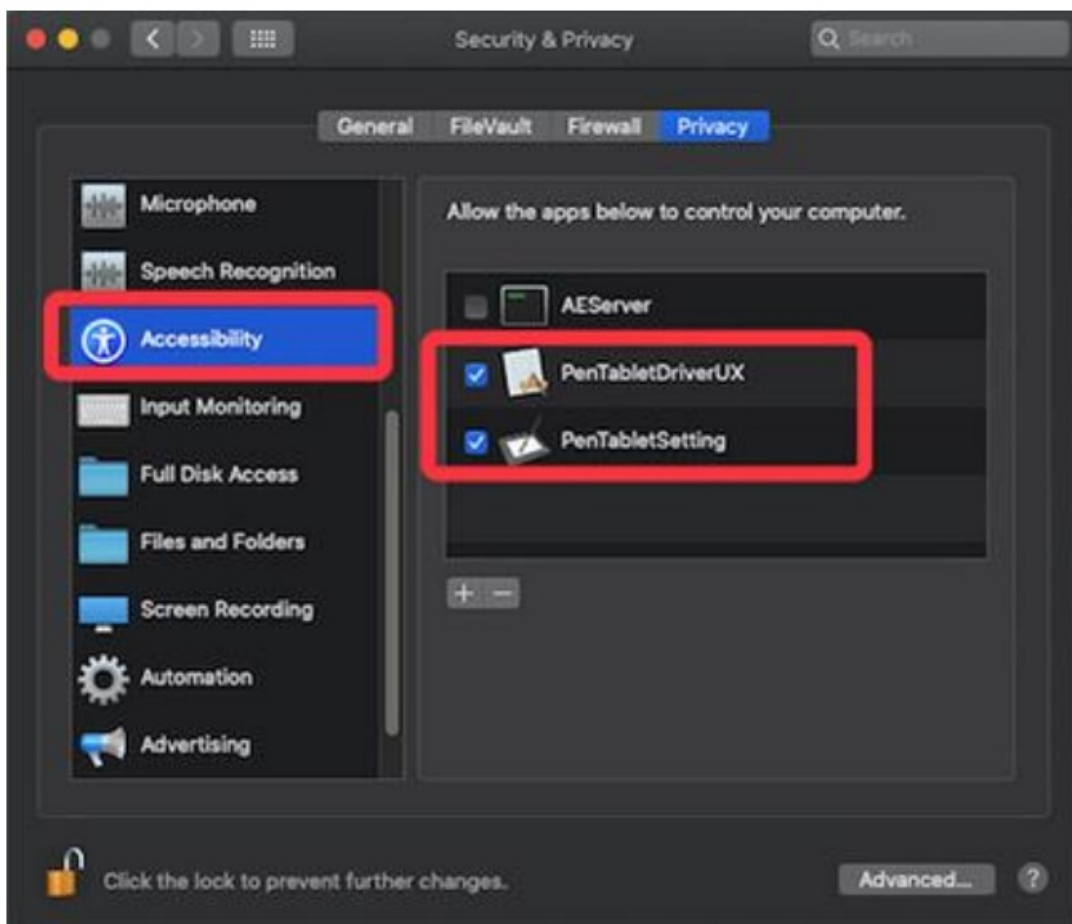
2. Go to **“System Preferences – Security & Privacy”**
3. On the Privacy tab, please delete all of tablet files on “Accessibility” & “Input Monitoring”.
4. Reboot your Mac.
5. When the computer Restarts, please go to the XP-Pen official website then download and install the newest Mac driver.
6. Go to **“System Preferences – Security & Privacy”**.
7. Once the Install is complete please go to **“Finder” (The word in the top left corner of your screen) – “Preferences” – “Sidebar”**.
8. On the **“Sidebar”** tab, please make sure the box next to your computers name is checked like in the image below.



9. Go to “**System Preferences – Security & Privacy – Privacy – Accessibility**”. Unlock “Click the lock to make changes.”

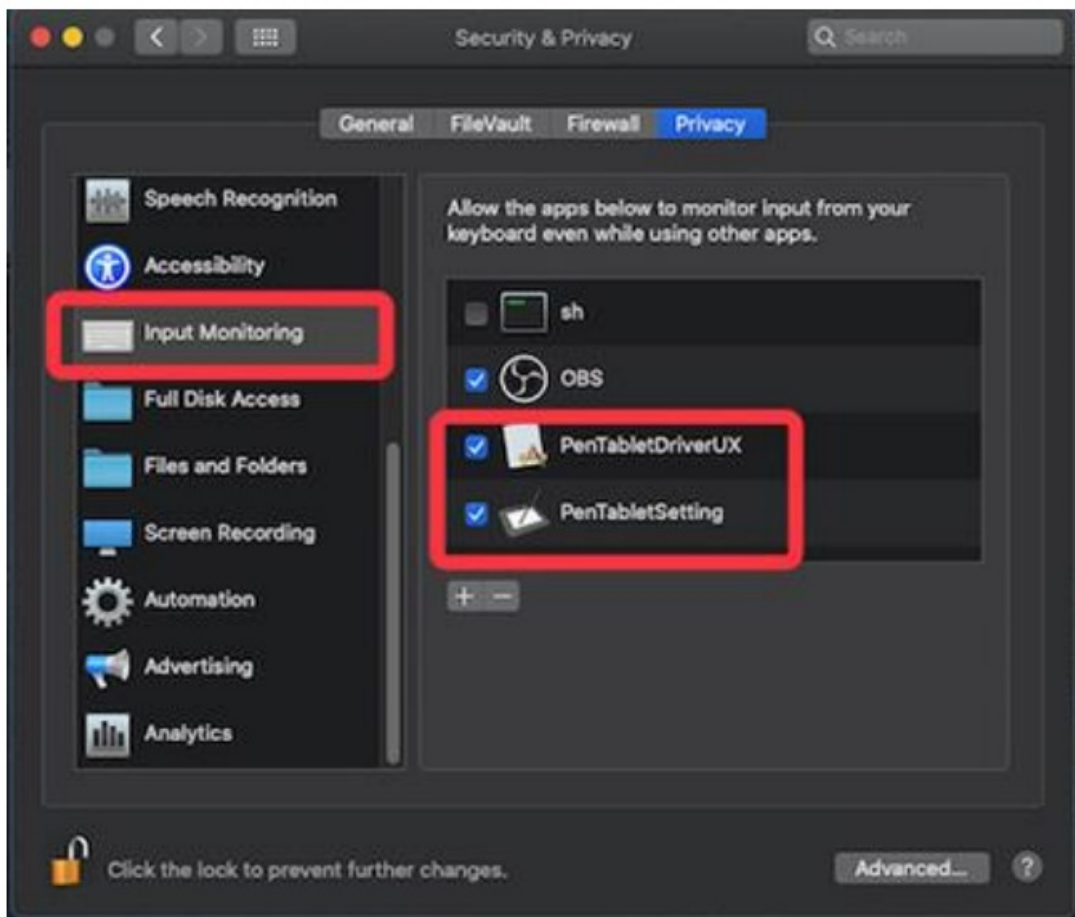


10. On the **Accessibility** tab, please enable “**Pen TabletSetting**”.
11. Click “+” button then go to “**Macintosh HD – Library – Application Support – Pen Tablet**” folder then choice “**PenTabletDriverUX**” and click OK button.

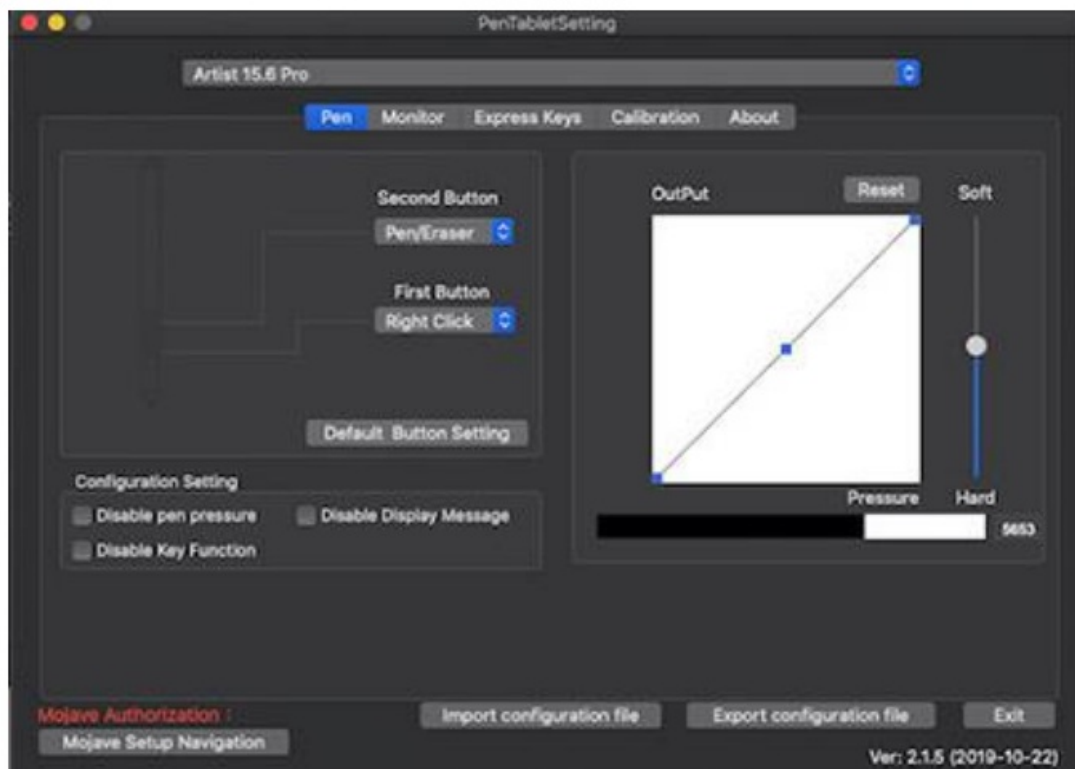


12. Go to **Input Monitor** tab and please also enable “**PenTabletSetting**”.
13. Click “+” button then go to “**Macintosh HD – Library – Application Support – Pen Tablet**” folder then

choice “PenTabletDriverUX” and click OK button. (If you get error message, please click “Quit Now” button.)



14. Reboot Mac and when the computer restarts, please open the PenTablet setting then check for pen pressure on the tablet?



Contents [hide](#)

[1 Documents / Resources](#)

[2 Related Posts](#)

Documents / Resources



[XP-PEN How to setup express keys on Windows?](#) [pdf] User Manual

How to setup express keys on Windows

[Manuals+](#),

- [home](#)
- [privacy](#)