



XOSS G Plus Smart GPS Cycling Computer User Manual

[Home](#) » [XOSS](#) » XOSS G Plus Smart GPS Cycling Computer User Manual 

Contents

- 1 XOSS G Plus Smart GPS Cycling Computer
- 2 Product Information
- 3 Product Usage Instructions
- 4 GPS LOCATION
- 5 Specification
- 6 Connect with XOSS APP
- 7 Packing List
- 8 Installation
- 9 After-sales Service & Warranty
- 10 Support
- 11 Documents / Resources
 - 11.1 References

XOSS

XOSS G Plus Smart GPS Cycling Computer



Product Information

- Product Name: XOSS G+ Smart GPS Cycling Computer
- Features: GPS Location, Speed, Time, Calorie, Distance, Elevation tracking
- Compatibility: Bluetooth 4.0 and later versions
- Packing List:
 - XOSS G+ Smart GPS cycling computer
 - Rubber Band
 - Protection Rubber Pad
 - Cycling Computer Mount
 - Type-C USB Cable
 - User Manual
- Warranty: One-year free warranty from the date of purchase (conditions apply)

Product Usage Instructions

1. To turn on the device, long press the right button.
2. Wait for a few minutes to get GPS signal after startup.
3. The GPS signal is ready when it appears solid with a BEEP prompt.
4. To save the workout after ending the ride, long press the left button.
5. Ensure that the device is used in an open space and barrier-free area to receive satellite signals.
6. To connect XOSS G+ to the XOSS APP, search for "XOSS" in the Google Play Store/App Store or scan the QR CODE provided.
7. In XOSS APP settings, you can customize various options such as Backlight, Key Tone, Auto Pause, Speed Alert, Tire Circumference, etc.
8. The workout data will be automatically synced to XOSS APP after connecting.
9. Before connecting, end the recording by long pressing the left button.
10. For ANT+ sensor connection:
 1. Bring the device within 3m of your sensors and stay 10m away from other riders' sensors.

2. The device will search for active sensors nearby.
 3. If the pairing succeeds, the sensor icon will remain static.
 4. Press the right button again to enter the Tire Circumference setting interface.
11. In the Tire Circumference setting interface:
 1. Press the left button to set the number.
 2. Press the right button to switch position.
 3. Long press the right button to proceed to the next step.
 12. In the Metric/Imperial Unit Setting:
 1. Press the left button to switch units.
 2. Long press the right button to proceed to the next step.
 13. In the Time Zone Setting:
 1. Press the left button to switch numbers.
 2. Press the right button to switch position.
 3. Long press the right button to end setting.
 14. To install the cycling computer:
 1. Put the rubber pad on the back of the bike stand.
 2. Use a rubber band to secure the bracket to the handlebar or stem.
 3. Align the tabs on the back of the device with the grooves on the bike stand, press down slightly, and rotate the device 90 degrees until it locks into place.
 15. For after-sales service and warranty, contact the original dealer.
 16. For additional product information, visit <https://www.xoss.co>.

GPS LOCATION

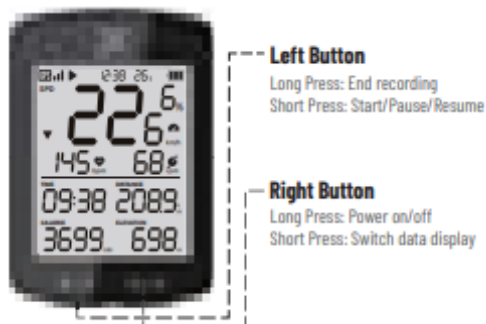
1. Long press the right button to turn on
2. Press the left button to start searching for GPS

GPS The GPS icon appears and starts to flash) (3 Get GPS signal after start up takes a few minutes

 GPS appears solid with BEEP prompt to indicate the device is ready.

3. Long press the left button to save the workout after ending the ride

Note: To receive satellite signals, please remains static and make sure your device is used at open space and barrier-free area.



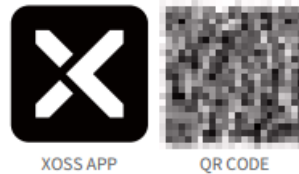
Specification

- Name: XOSS G+ Smart GPS Cycling Computer
- Size: 71mm x 48mm x 19.1mm

- Product Weight: 42g
- Operating Temperature:-10°C~50°C
- Endurance Time: 28 Hours
- Battery: 500mAh Rechargeable Lithium Ion
- Waterproof: IPx7
- ANT+Speed Sensor, Heart Rate Monitor, Speed/Cadence Sensor
- Data Display:24 Types of Data

Connect with XOSS APP

Search XOSS in Google play store/APP store, or scan QR CODE on the right to download XOSS APP.



1. Turn on XOSS G+ and turn on Bluetooth on the phone.
2. Open the XOSS APP, select Devices > Bike Computers > G/G+.

After connecting XOSS G+ to XOSS APP: click on settings to change Backlight, Key Tone, Auto Pause, Speed Alert, Tire Circumference, etc.; the workout data will be automatically synced to XOSS APP.

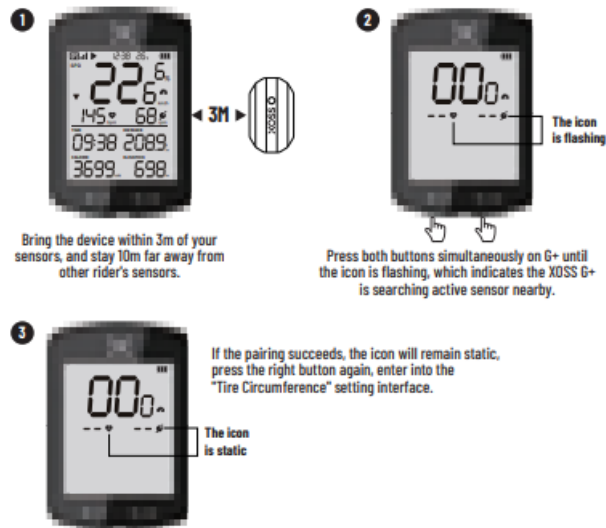
Note: Long press the left button to end recording before connection. The App is designed for Bluetooth 4.0 and later versions.

Packing List

- XOSS G+ Smart GPS cycling computer
- Rubber Band
- Protection Rubber Pad
- Cycling Computer Mount
- Type-C USB Cable
- User Manual

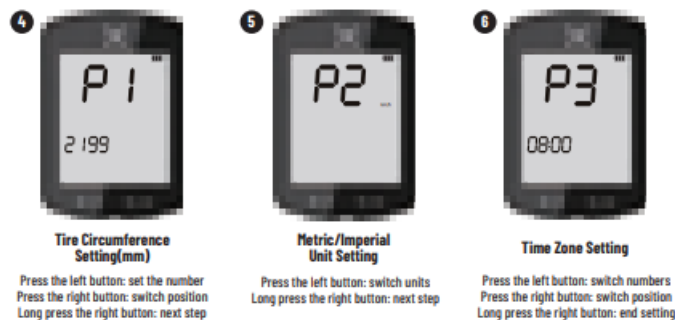


ANT+ Sensor Connection



1. Bring the device within 3m of your sensors, and stay 10m far away from other rider's sensors.
2. Press both buttons simultaneously on G+ until the icon is flashing, which indicates the XOSS G* is searching active sensor nearby.
3. If the pairing succeeds, the icon will remain static, press the right button again, enter into the "Tire Circumference" setting interface.

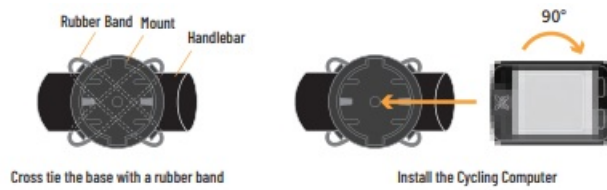
[Circumference] [Metric/Imperial] [Time Zone]Settings



1. Press the left button: set the number Press the right button: switch position Long press the right button: next step
2. Press the left button: switch units Long press the right button: next step
3. Press the left button: switch numbers Press the right button: switch position Long press the right button: end setting

Installation

1. Put the rubber pad on the back of the bike stand;
2. Use a rubber band to secure the bracket to the handlebar or stem;
3. Align the tabs on the back of the device with the grooves on the bike stand, press down slightly, and rotate the device 90 degrees until it locks into place.



After-sales Service & Warranty

It has a one-year free warranty from the date of purchase, please contact your original dealer for warranty service. The following conditions are not covered by the warranty:

1. The normal aging loss of the battery;
2. Damage and loss of products due to improper installation;
3. Damage caused by abnormal use, such as high temperature and water damage;
4. Damage caused by dismantling yourself or by unauthorized maintenance personnel.

Support

Please access <https://www.xoss.co> for more product information.

NOTE

This equipment has digital device, pursuant to reasonable protection eQuioment generates us found to comply with the limits for a Class B CC Rules. These limits are designed to provide Terence in a residential installation. This frequency energy and, if not installed and full interference to radio interference will not occur in a interference to radio or equipment off and on, the by one or more of the following measures

- Increase the separation between the equipment and receiver.
- Connect the equipment into an outlet on a circuit different from that to which the receiver is connected.
- Consult the dealer or an experienced radio/TV technician for help

Changes or modifications not expressly approved by the party responsible for compliance could void the user's authority to operate the equipment.

FCC Caution. as § 15.19 Labeling requirements. This device complies with part 15 of the FCC Rules. Operation is subject to the following two conditions: (1) This device may not cause harmful interference, and (2) this device must accept any interference received, including interference that may cause undesired operation.

Documents / Resources



[XOSS G Plus Smart GPS Cycling Computer](#) [pdf] User Manual
2AJFWXOSS2, 2AJFWXOSS2, G Plus Smart GPS Cycling Computer, G Plus, Smart GPS Cycling Computer, GPS Cycling Computer, Cycling Computer, Computer

References

