

[Skip to content](#)

Manuals+

User Manuals Simplified.



Xmate Neye3c App User Manual

[Home](#) » [Xmate](#) » Xmate Neye3c App User Manual

Contents [hide](#)

[1 Xmate Neye3c App](#)

[2 Mobile App Download](#)

[3 IP Camera Installation Cautions](#)

[4 Hotspot Connection \(Android\)](#)

[4.1 Hotspot Connection \(IOS\)](#)

[5 Smart Add](#)

[6 App Receiving Alarm](#)

[7 Cloud Storage](#)

[8 Playback](#)

[9 Add the device to the second phone](#)

[10 Add the device to Windows PC /Laptops](#)

[11 SW installation guide in \(Windows PC\)](#)

[12 Disclaimer:](#)

[13 Documents / Resources](#)

[13.1 References](#)

[14 Related Posts](#)



Xmate Neye3c App



Mobile App Download

Search 'Neye3c' in Google Playstore or App Store. Scan the App QR code.



IP Camera Installation Cautions

1. Please check the power supply voltage before installation. Format the TF card when using this product for the first time.
2. Please make sure the SSID & password are only English letters and numbers.
3. This product does not support 5G signal for the time being. Please re-connect to 2.4G signal to configure.

4. Keep the camera close to the router for configuration.

This manual is for reference only and the ultimate interpretation belongs to the manufacturer. Products are subject to update without prior notice.

Hotspot Connection (Android)

Installation Guide:

Power on, and make sure the indicator light is on. After the system startup is completed and hears the voice prompt “Entering the AP configuration, please configure WiFi”. Then you can refer to the instructions.

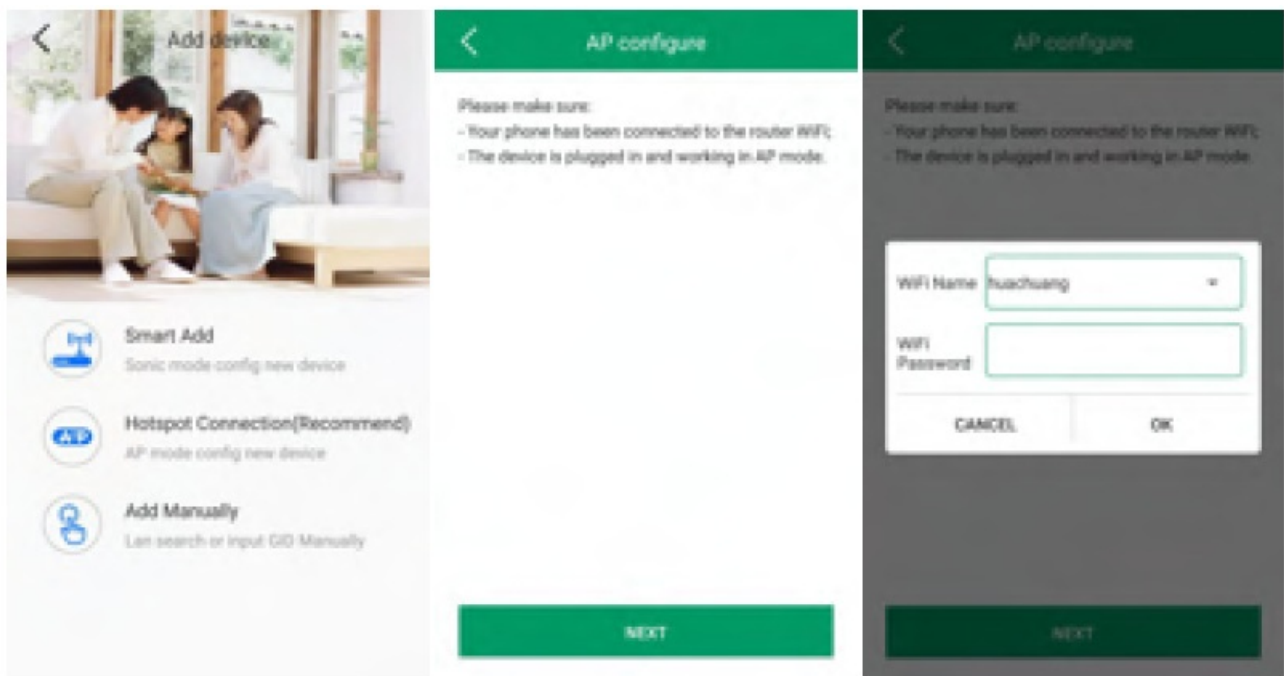
Note: If there is no voice prompt, please long press the “Reset” button and wait for the voice prompts.



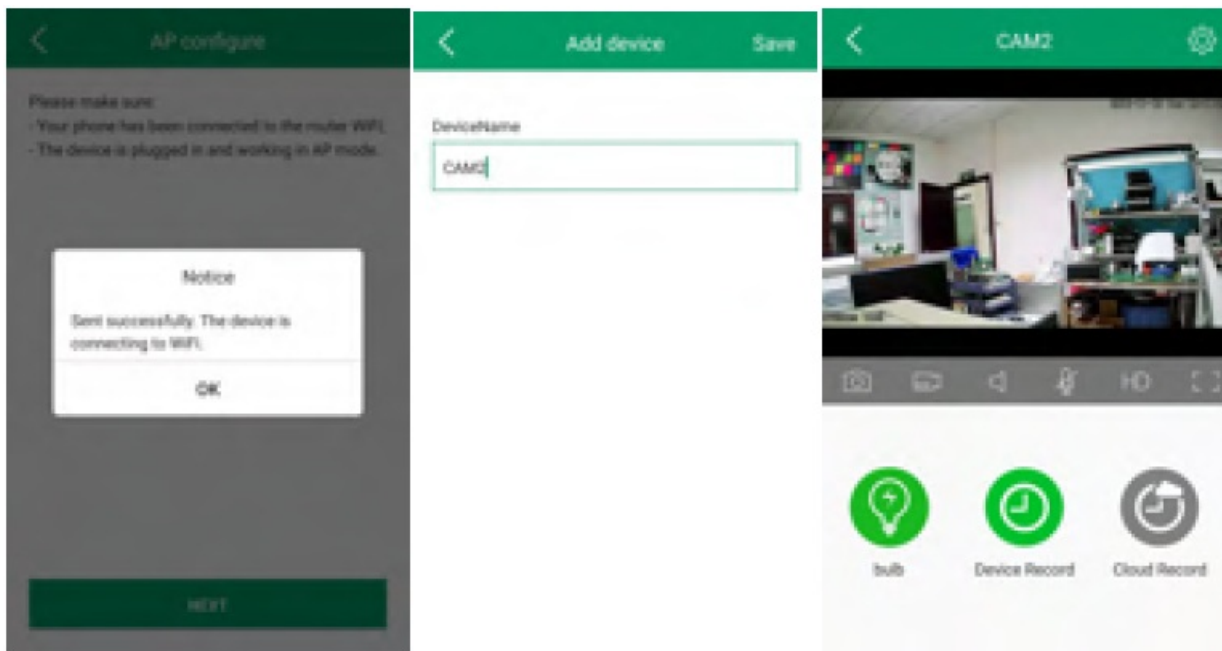
1. Connect to WiFi CAM hotspot



2. Register and login
3. Click “Hotspot Connection
4. Confirm device and mobile status
5. Fill in the WiFi information and confirm



6. Wait for device's WiFi connection
7. Click "Save"
8. Live preview



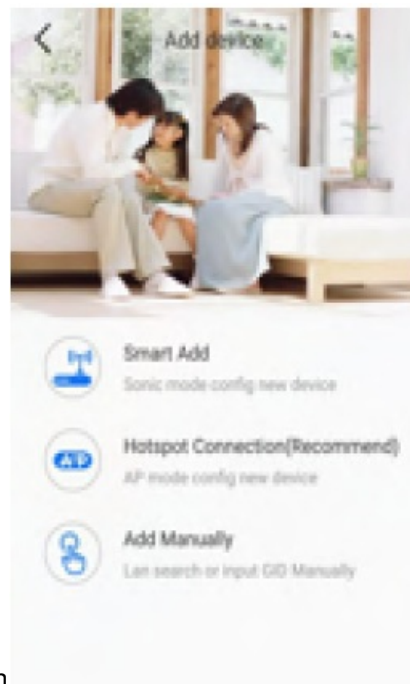
Hotspot Connection (IOS)

Installation Guide:

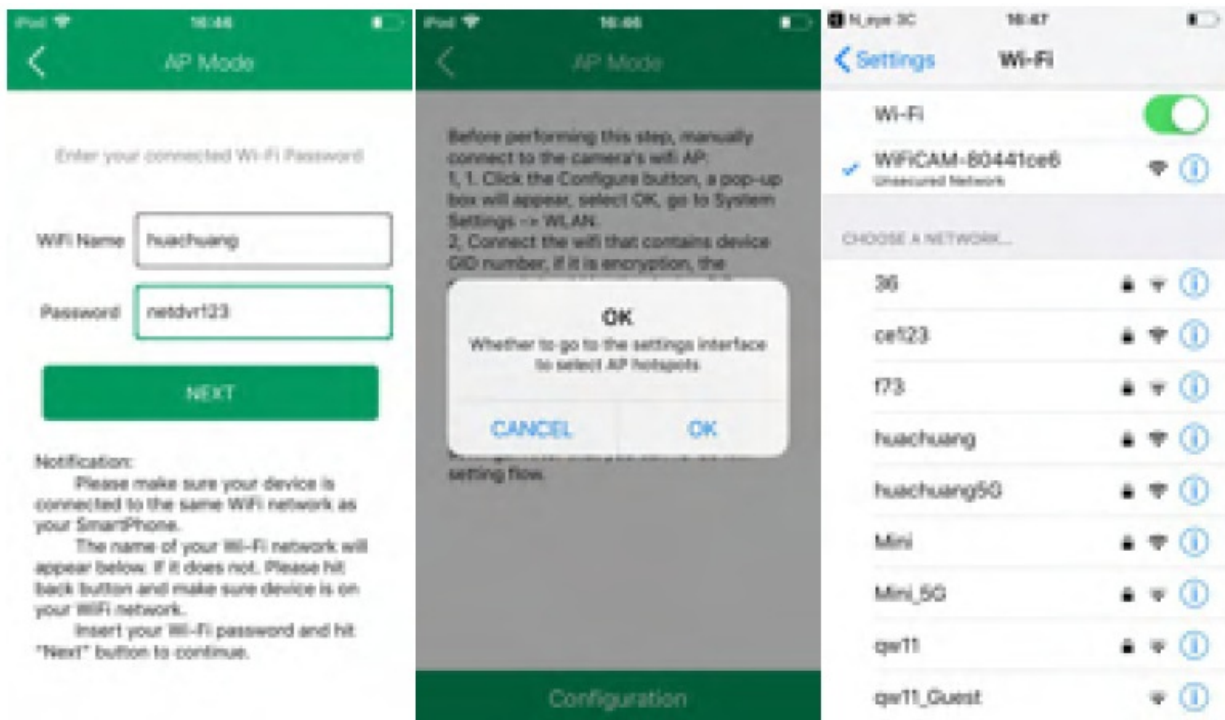
Power on, and make sure the indicator light is on. After the system setup is completed and you hear a voice prompt 'Entering the AP configuration, please configure Wi-Fi. Then refer to the instruction.

Note:

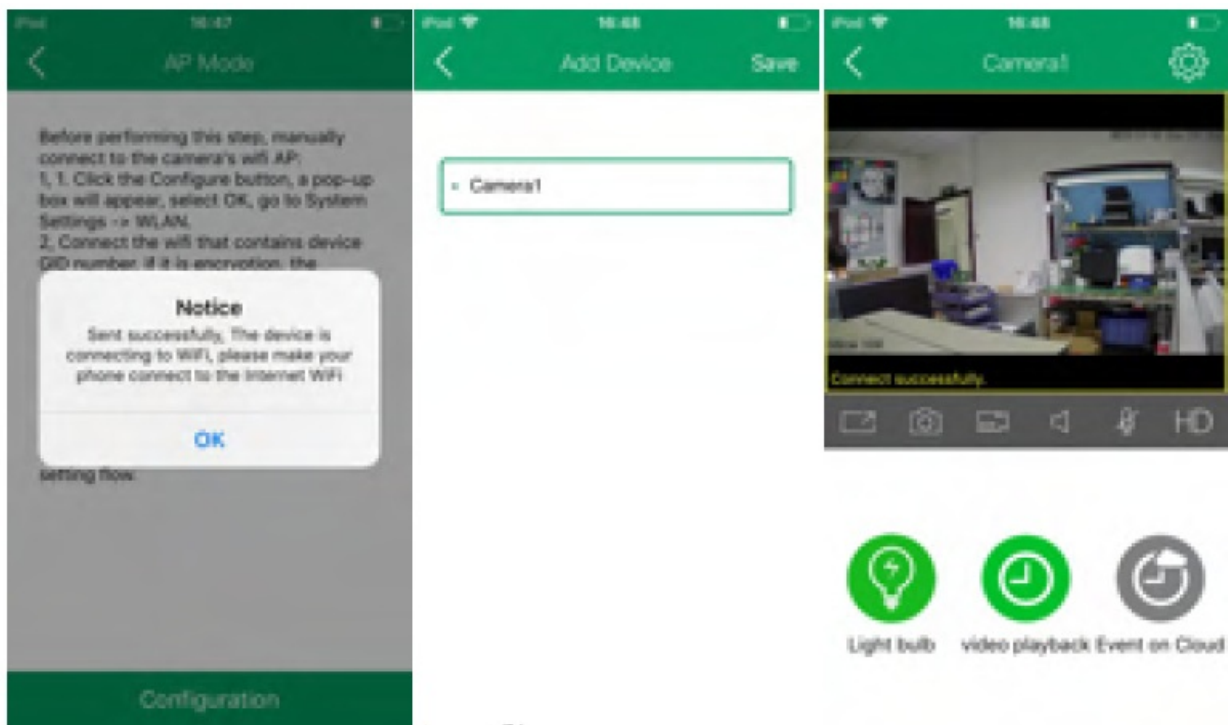
If there is no voice prompt, please long press the 'reset' button and wait for the voice prompt.



1. Click “Hotspot Connection
2. Fill in the WiFi information
3. Follow the prompts to the “Settings”
4. Connect to Wi-FiCAMhotspot



5. Return to APP, and click “Configure”
6. Wait for the phone and camera connected to WiFi and click “Save”
7. Live preview

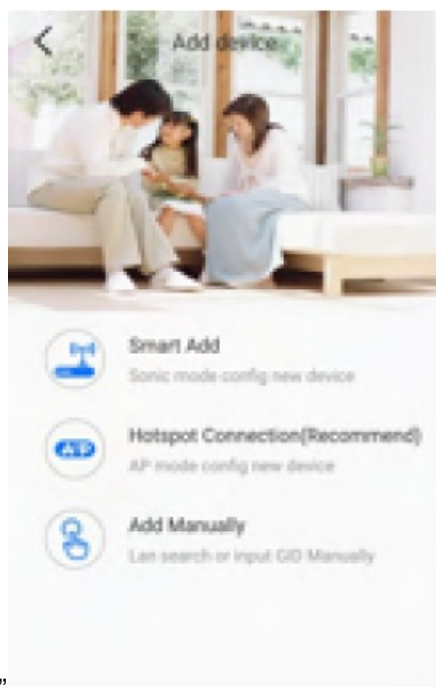


Smart Add

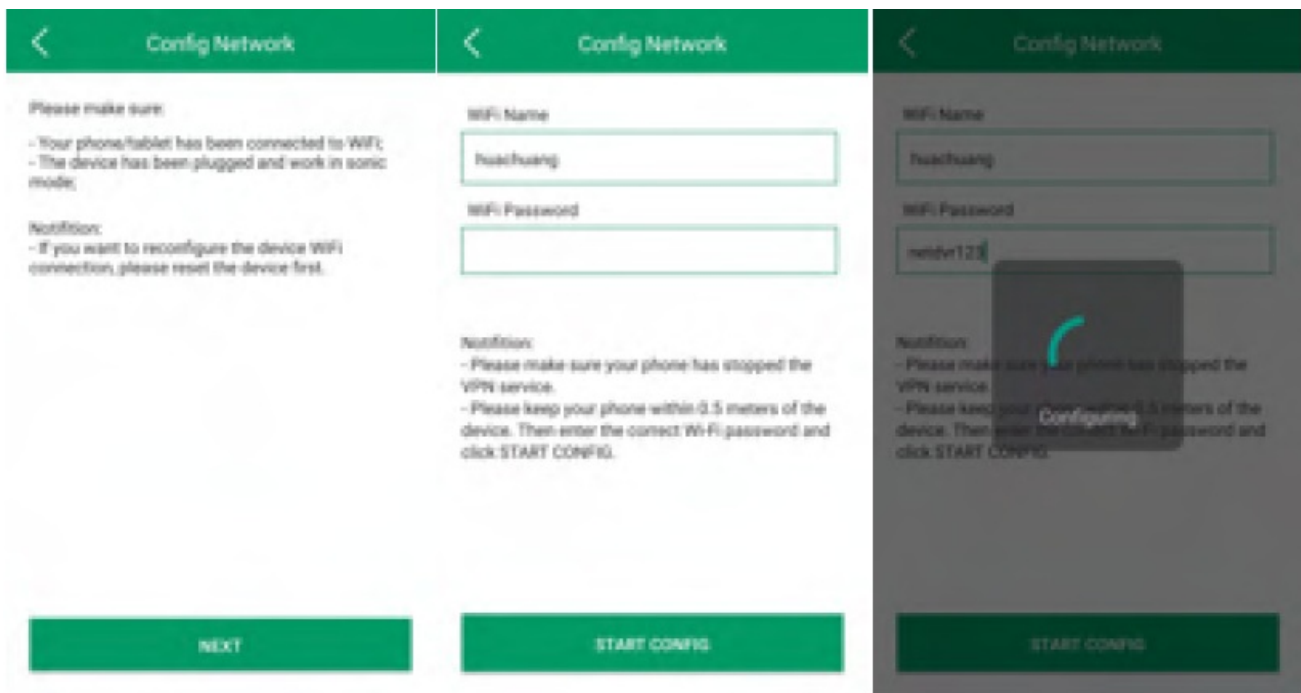
Installation Guide:

Power on, and make sure the indicator light is on. After the system setup is completed and you hear a voice prompt 'Entering the AP configuration, please configure Wi-Fi. Then refer to the instruction.

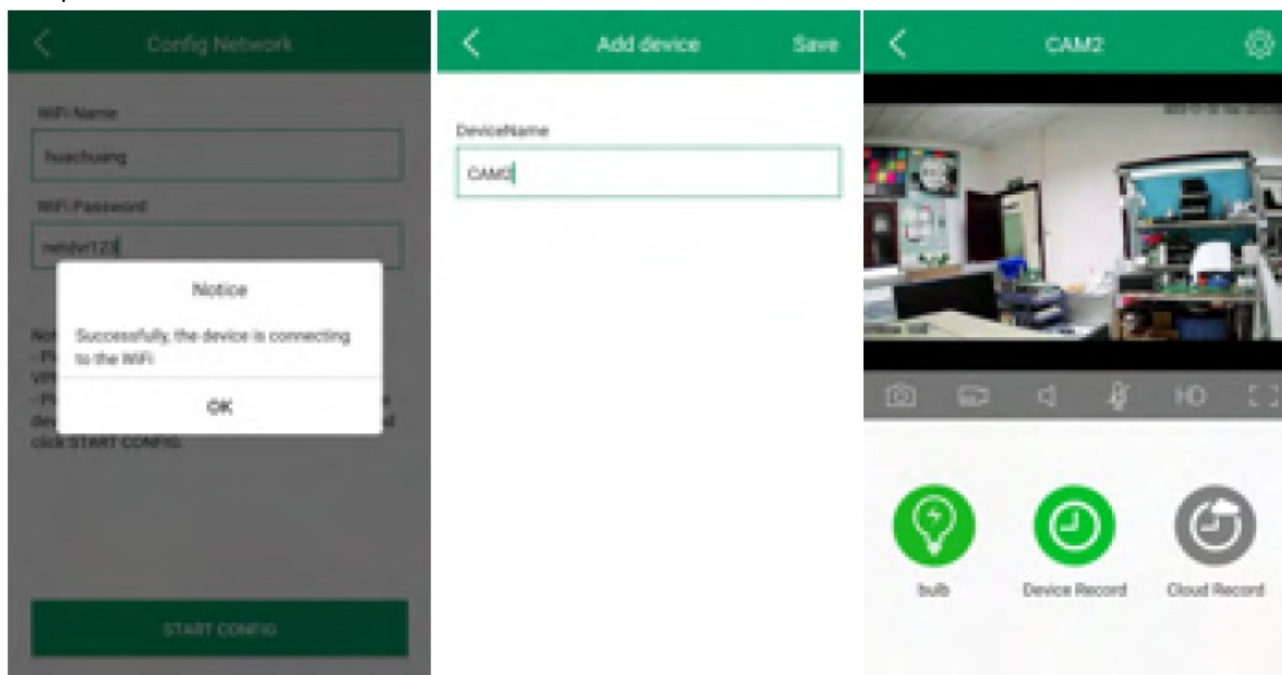
Note: If there is no voice prompt, please long press the 'reset' button and wait for the voice prompt.



1. Click "Smart add"
2. Confirm device and mobile status
3. WiFi configuration



4. WiFi configuration Completed
5. Click “save”
6. Live preview

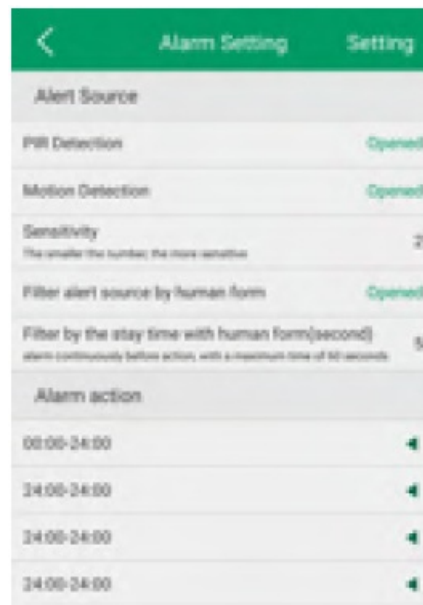


Early Warning

Introduction:

If someone enters the monitoring area, camera judges by the humanoid detection algorithm, turn on the speaker voice warning and white light output to the external alarm device and push to App. PIR

- **Infrared:** Turn on PIR human body detection.
- **Motion Detection:** Turn on motion detection.
- **Sensitivity:** Motion detection sensitivity filter alert source by human form. Detects human form and resolve false positives.



- **Note:** Click on 'setting' icon to configure alarm setting.

App Receiving Alarm

Introduction:

Your mobile device will receive an alarm message after the device alarms. And the live video can be played immediately when the user clicks on the call.

1. Set to receive alarm in the App alarm settings. (Figure 1)
2. When the device sends an alarm, the mobile device receives the alarm. (Figure 2)
3. Click on the answer button and enter the live preview.

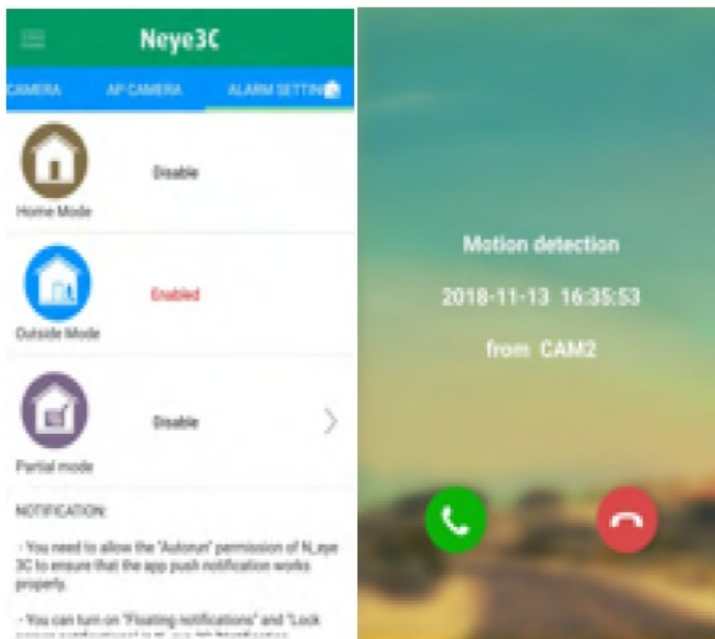


Figure 1

Figure 2

Cloud Storage

Introduction:

After the cloud storage is activated, cloud recording can be performed.

1. Click 'cloud service' on preview interface and enter cloud storage.
2. Buy the storage plan, cloud storage service can be used after successful payment.



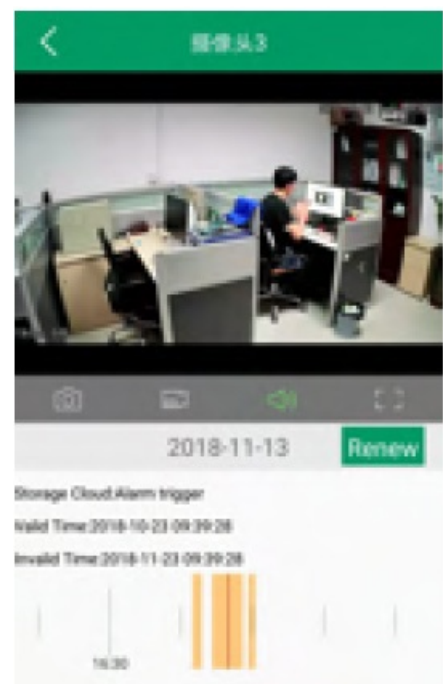
Note: Please enable camera warning function for using alarm cloud storage.

Cloud Storage Playback

Introduction:

Check the cloud recording data of the device.

1. Click on 'cloud service' on the preview interface.
2. Select the date and time to check record.



3. You can also check and renew the cloud storage plan on this page.

Playback

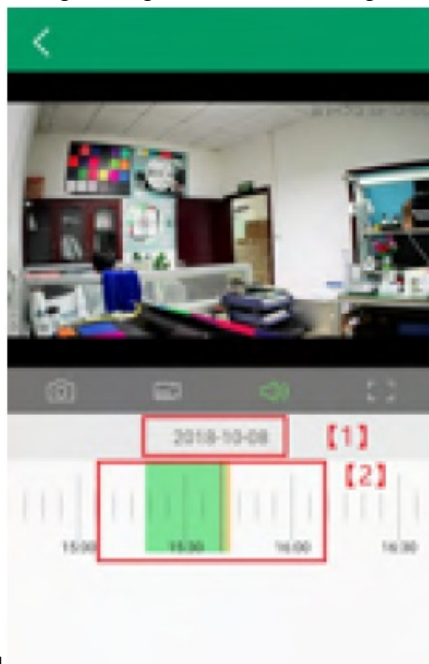
Introduction:

Check the recording data in SD card remotely.

1. Click on 'playback' on the preview interface.
2. Select the date and time to check record.

The color in the progress bar is as follows:

- **Green:** Planned recording Orange: Alarm recording



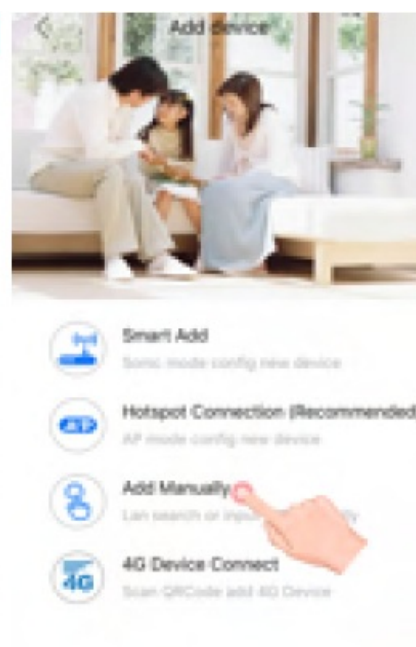
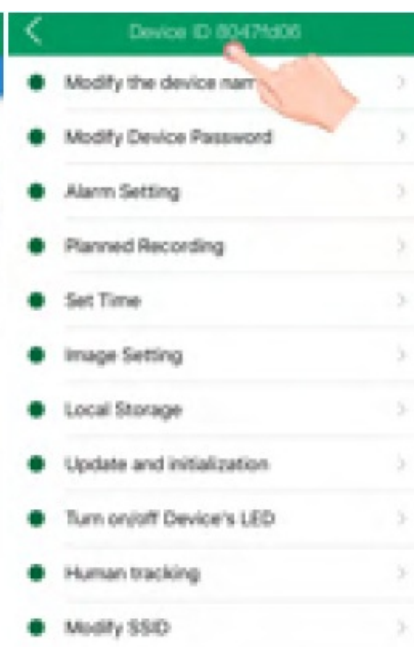
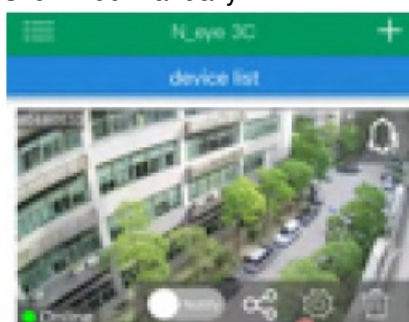
- **White:** No recording

The color in the progress bar is as follows:

- **Green:** Planned recording
- **Orange:** Alarm recording

Add the device to the second phone

1. Click on the
2. Check the device ID
3. Click Add Manually

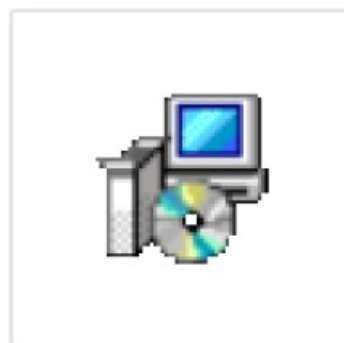


4. Click Add Device By Gid
5. Enter Gid
6. Add successfully



Add the device to Windows PC /Laptops

Please visit to our official Xmate website <http://xmate.in> to download the software or use the below link to direct download the PC installation SW.



cms20002018123
0setup(1)

<http://xmate.in/software-installation-guide>.

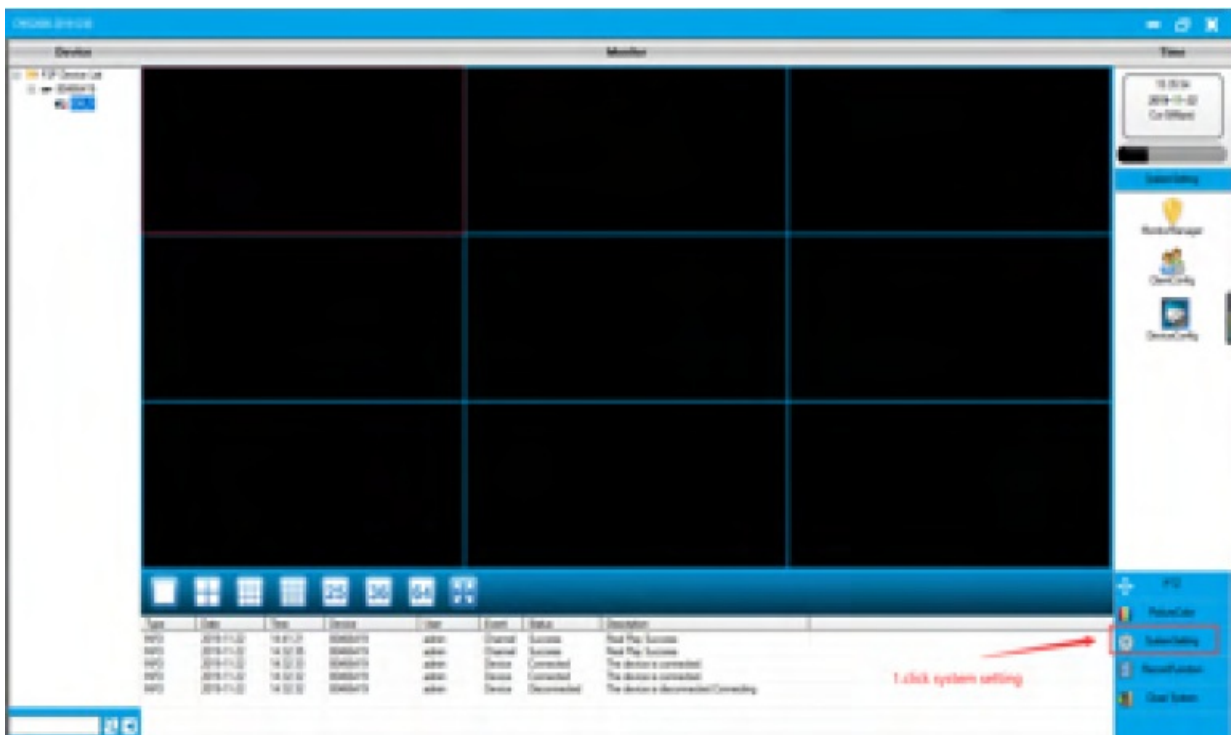
SW installation guide in (Windows PC)

1. Please download & install the SW on your PC or laptop.
2. After successful installation please double click on the Shortcut "CMS2000" created on your Screen

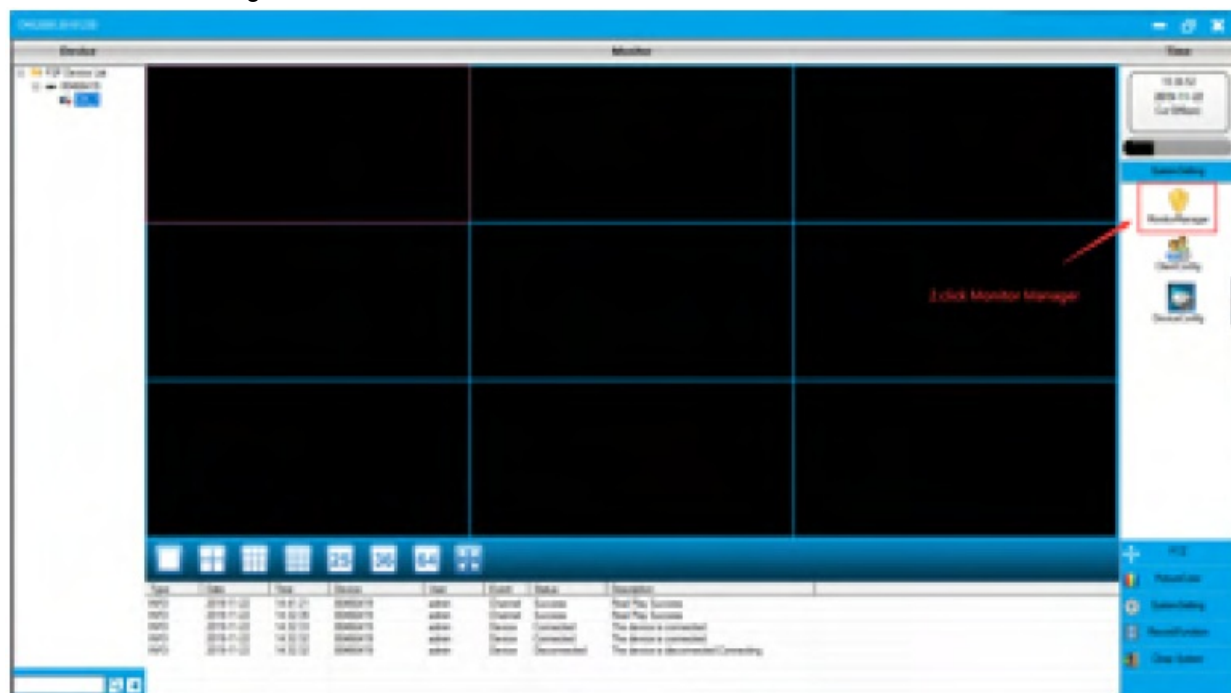


2. Click to open
CMS2000

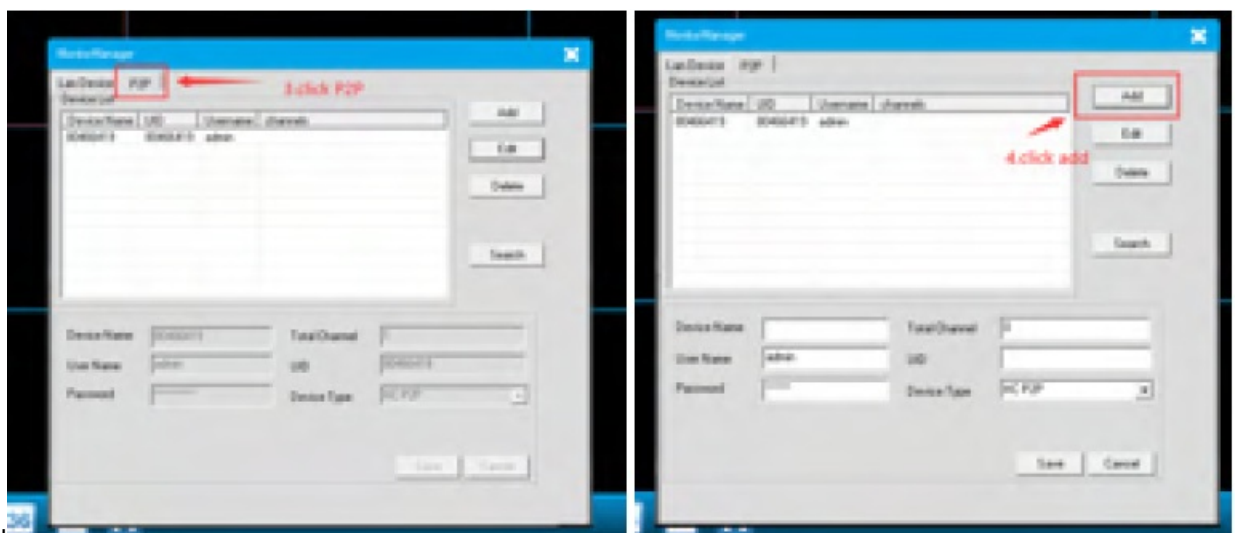
3. Go to system settings



4. Go to monitor manager

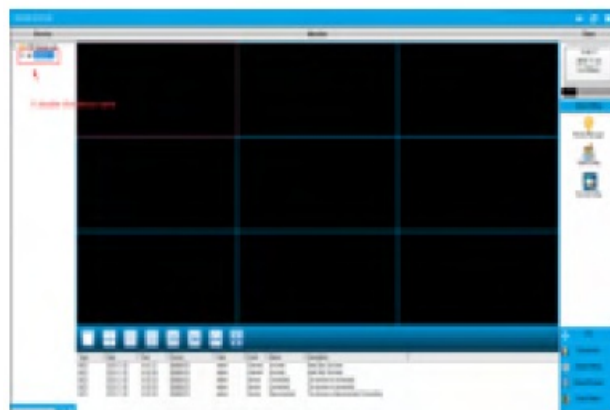
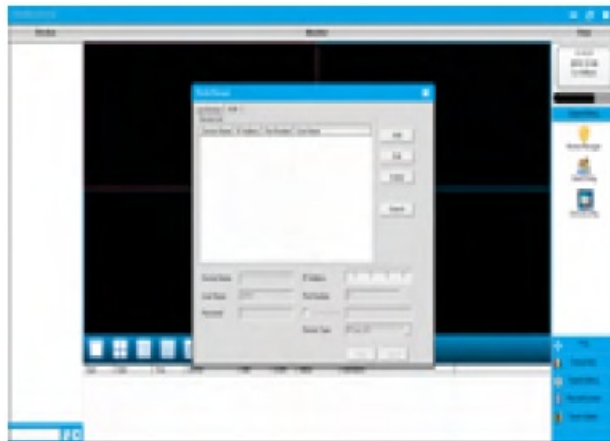


5. Click P2P

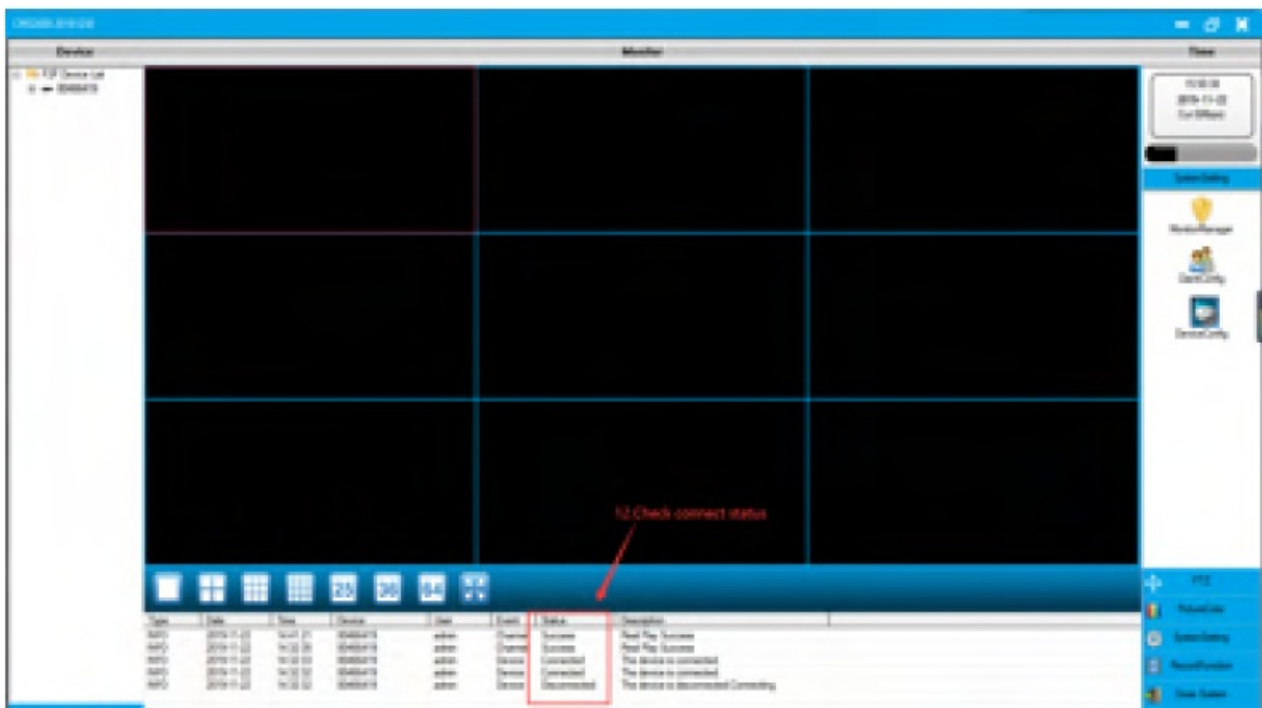


6. Click Add

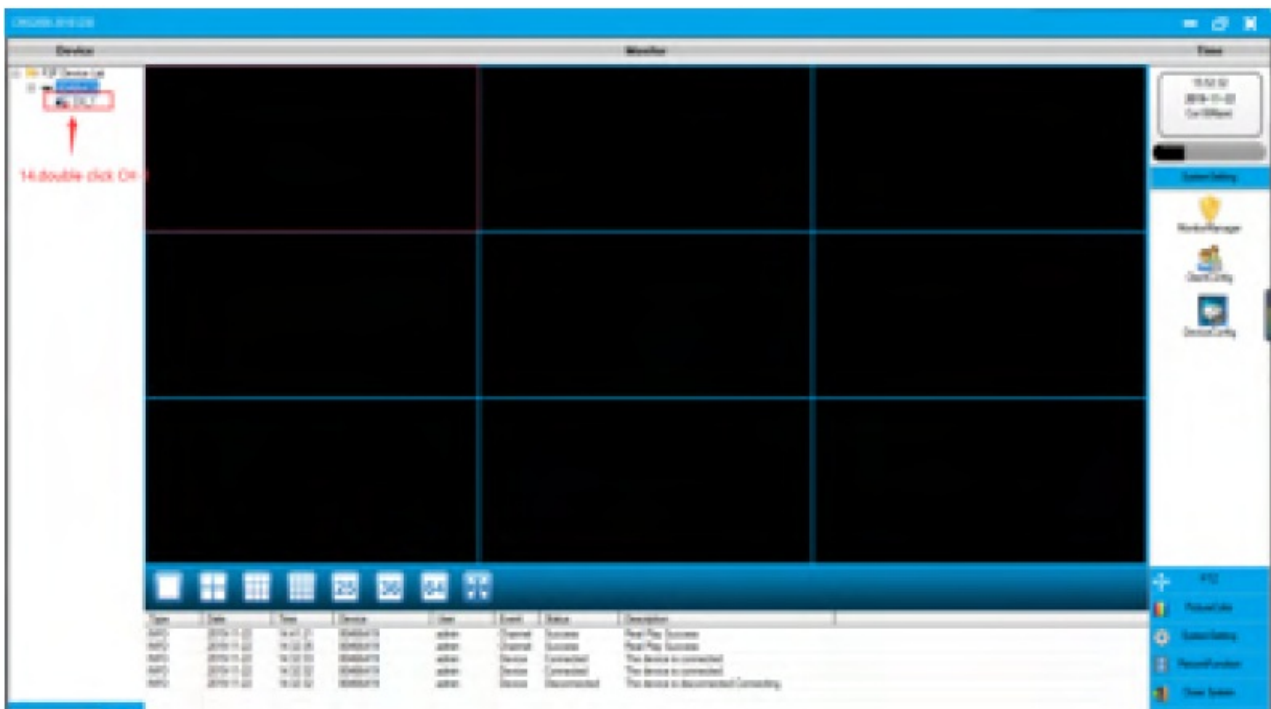
7. Input Device Name (same as UID no)
8. Input device channel as "1"
9. Input UID no (same as ID no of your phone)
10. Input password (Default password is 12345678)
11. Click "save" to save the details.
12. Close the window



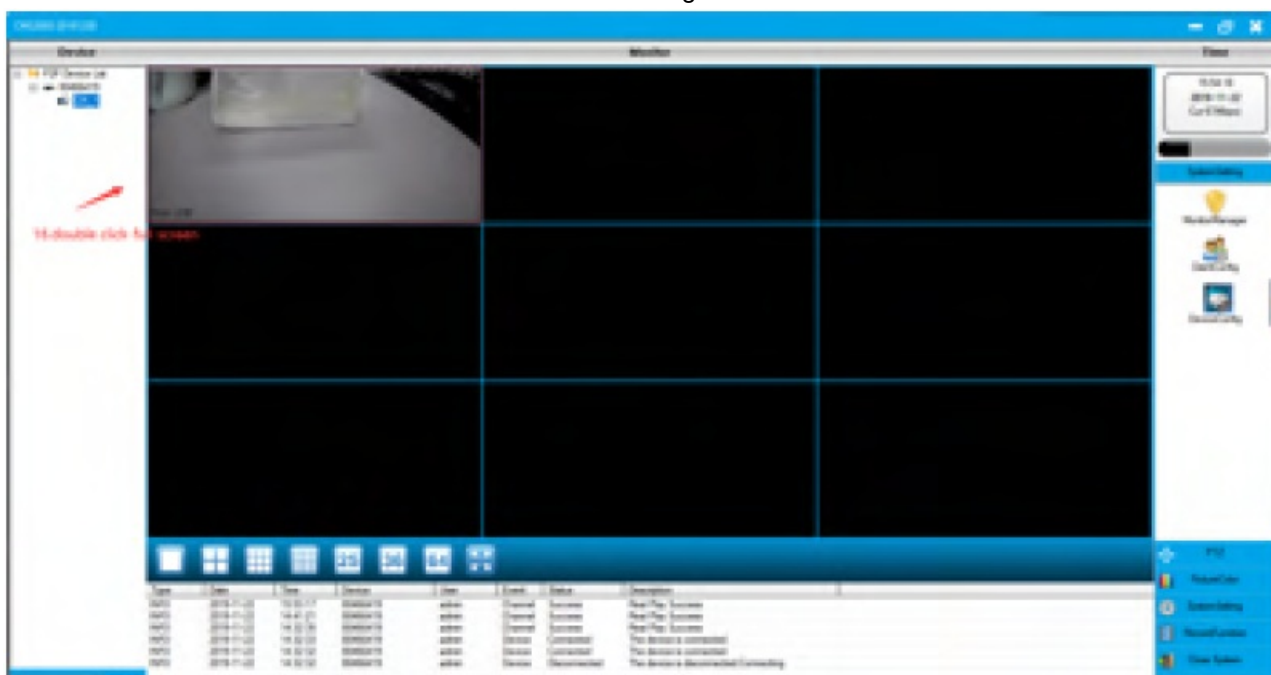
13. Double click on Device Name as marked
14. Check the connection status it should show connected



15. Now again double click the device name.
16. Double click the CH-1
17. The connection will get succeed



18. After successful connection double click the on Video to get in full screen.



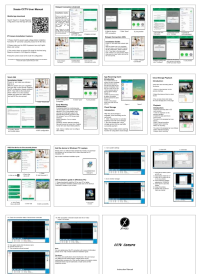
Note:

For more details about the PC connection with camera & information please visit at <http://xmate.in/software-installation-guide>

Disclaimer:

The colors and specifications shown/mentioned in the user manual may differ from the actual product. Images shown are for representation purpose only. Other product logos and company names mentioned herein may be trademarks or trade names of their respective owners.

Documents / Resources



[Xmate Neye3c App](#) [pdf] User Manual
Neye3c App

References

- [xmate.in](#)
- [xmate.in](#)

[Manuals+](#),

- [home](#)
- [privacy](#)