



## XISKT Digital Photo Frame with Whale Photo App User Manual

[Home](#) » [XISKT](#) » XISKT Digital Photo Frame with Whale Photo App User Manual 



Digital photo frame  
User Manual



### **XISKT**

#### **Operating Instruction**

In order to ensure that you can fully understand and use this product, please ensure to read the instructions carefully. After reading, please keep it properly for future reference.

## Contents

- [1 Included Accessories](#)
- [2 Function Introduction](#)
- [3 How to Install the Bracket](#)
- [4 Getting started](#)
- [5 Guarantee](#)
- [6 Documents / Resources](#)
- [7 Related Posts](#)

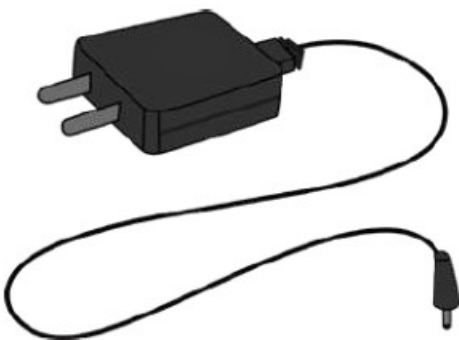
## Included Accessories



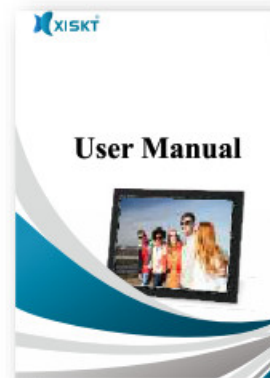
Digital Photo Frame



Bracket

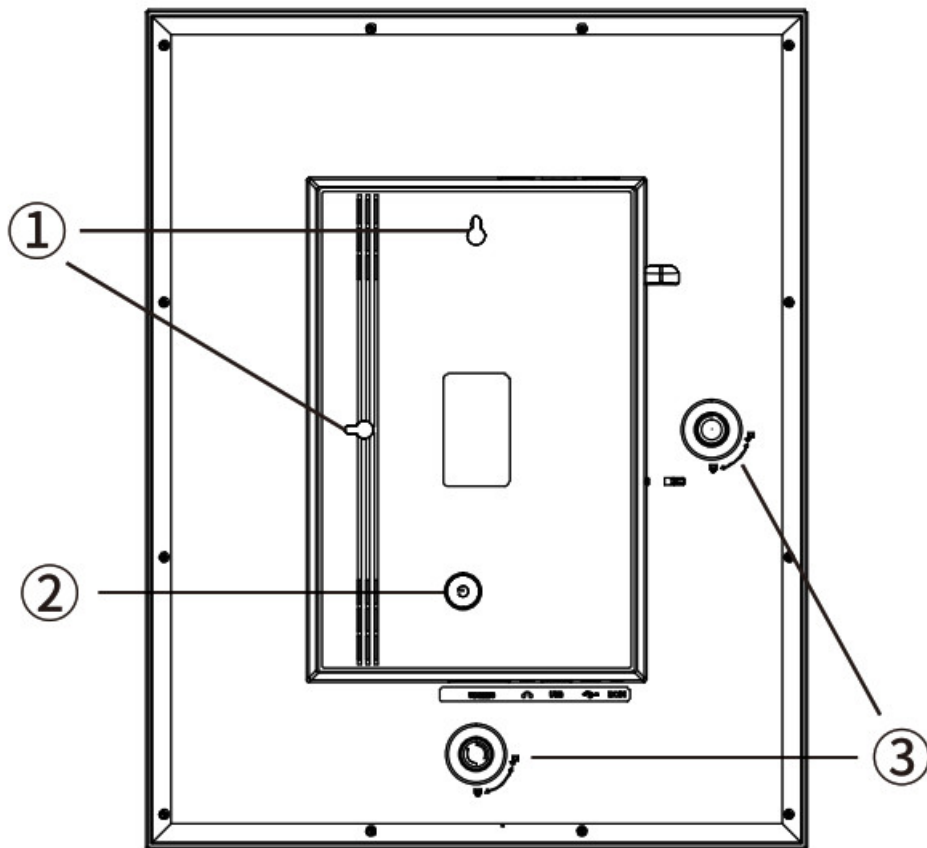


Power adapter

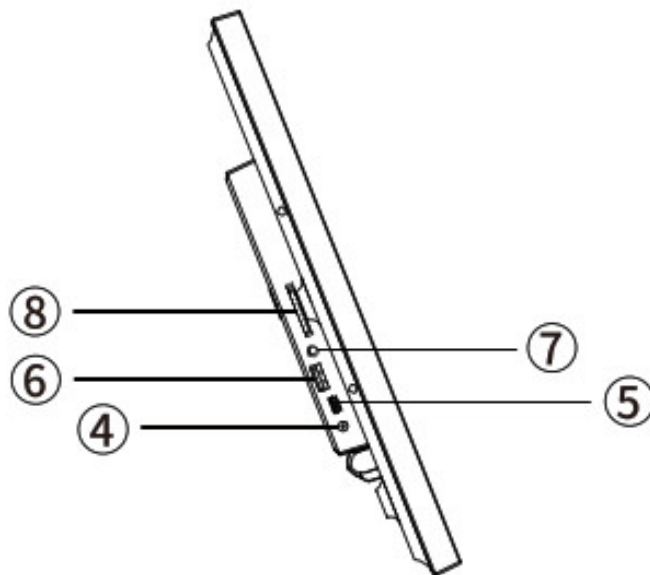


Instruction manual

## Function Introduction



- 1. Wall-mounted hole
- 2. Power switch button
- 3. Removable bracket

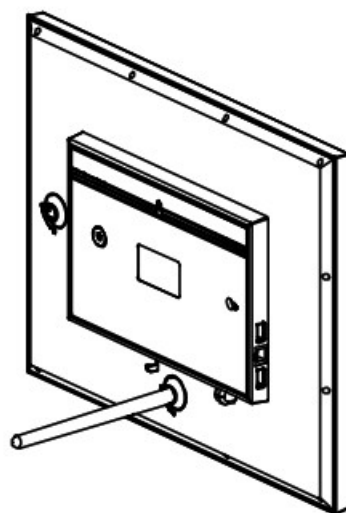
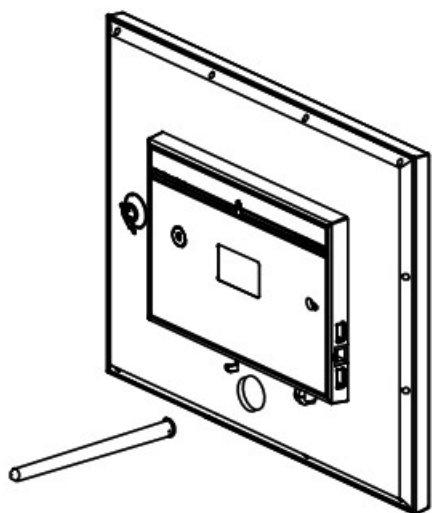


- 4. Power port
- 5. USB upgrade interface (Dedicated port for technicians)
- 6. USB port
- 7. Earphone port
- 8. SD card slot

## How to Install the Bracket

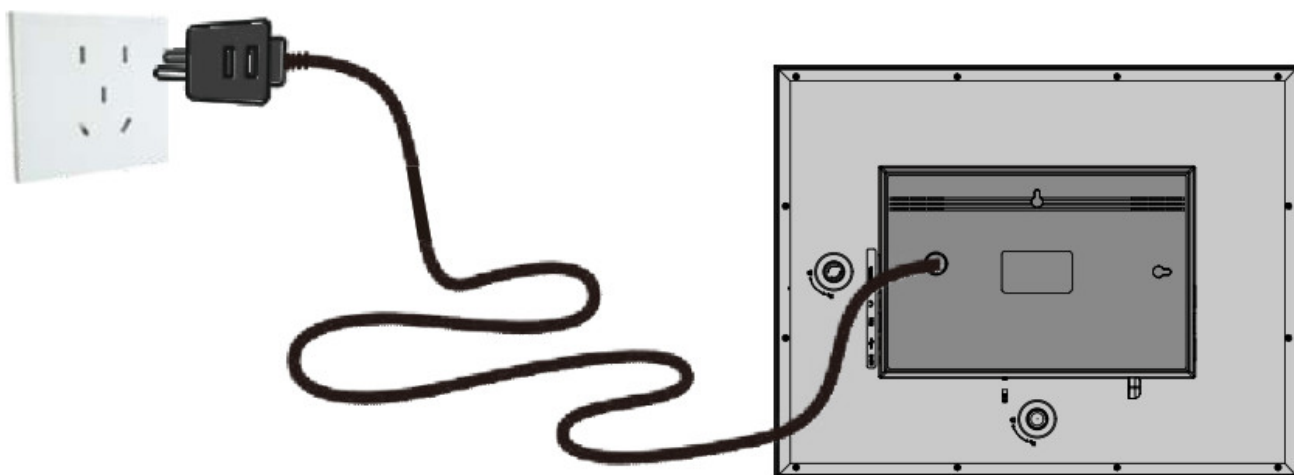
- 1. Install the bracket

- Find the bracket hole of the photo frame and install it directly.
- Mounting holes are required if you'd like to install them on the wall.



## 2. ON/OFF

Connect the adaptor so that the photo frame will enter the system in a few seconds.



## 3. Connect the WiFi

Select the WiFi network, then input the password.

Note: Please close to the router then wait a few seconds later if your WiFi is not on the list.

## Getting started

Whale Photo Web is a pc online transferring tool for Whale Photo Frames. Through the Whale Photo Web. you can share up to 500 photos to the photo frame at once.

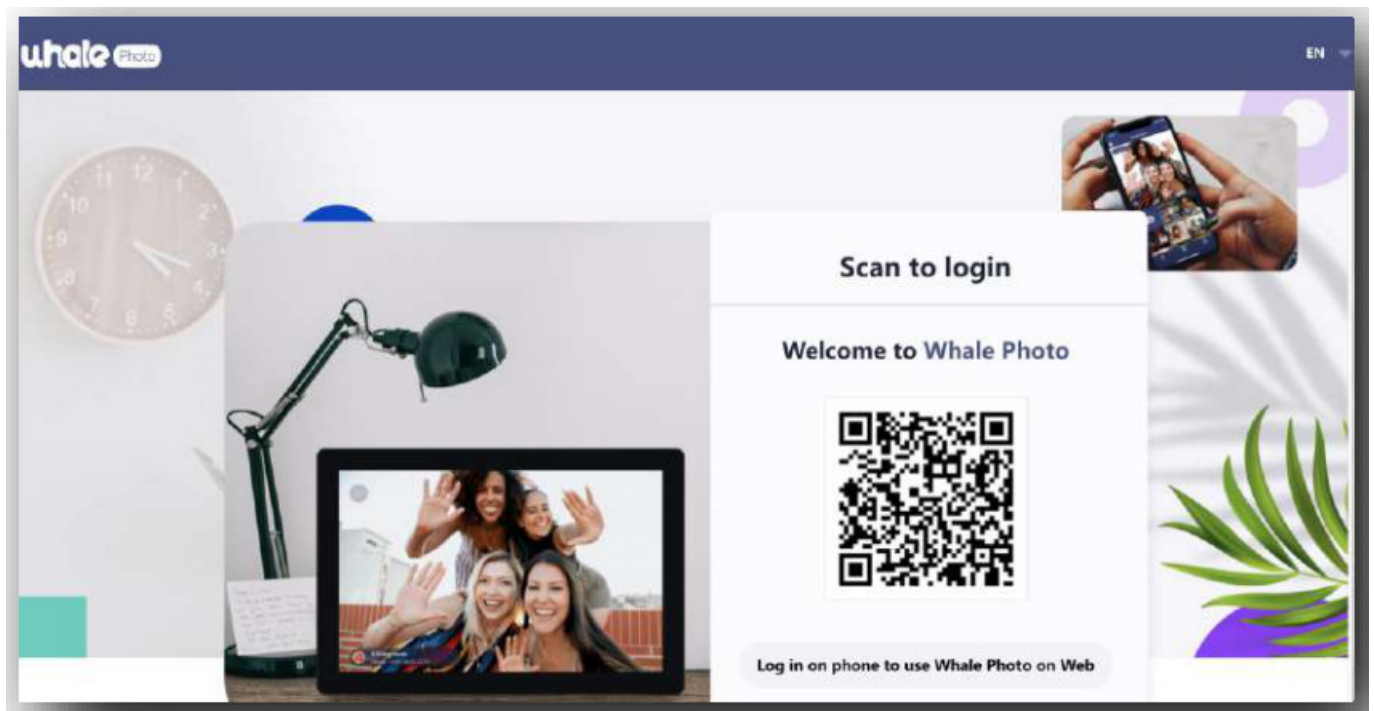
### 1. Log in and log out

#### 1.1 Scan code login

Visit the website to get access to Whale Photo Web: <https://whalephoto.zeasn.tv>

Download, install and open the "Whale Photo" APP on your mobile devices, and find the QR code under [Scan] to log in.

**[NOTE:** When successfully logged in, the web— will automatically synchronize the information from the APP (eg. profile picture. nickname, connected device).



## 1.2 Log out

To switch accounts for sharing, Log out of the current account in the upper right corner, and scan the code to log in to another account.



## 2. Photo sharing

### 2.1 Photo selection

After logging in, select photos to share in two ways.

1. Click the button to open the local folder and select photos;
2. Drag photos or a folder directly to the area, then click [Next] to upload;

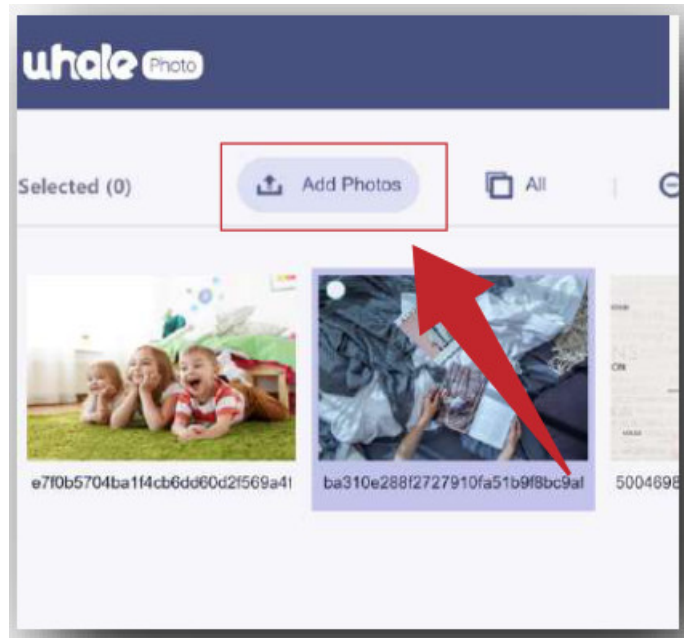
**NOTE:**

1. Hold down Ctrl to select batches or drag photo(s) to the area.
2. Currently supported formats: JPG, JPEG, PNG, BMP

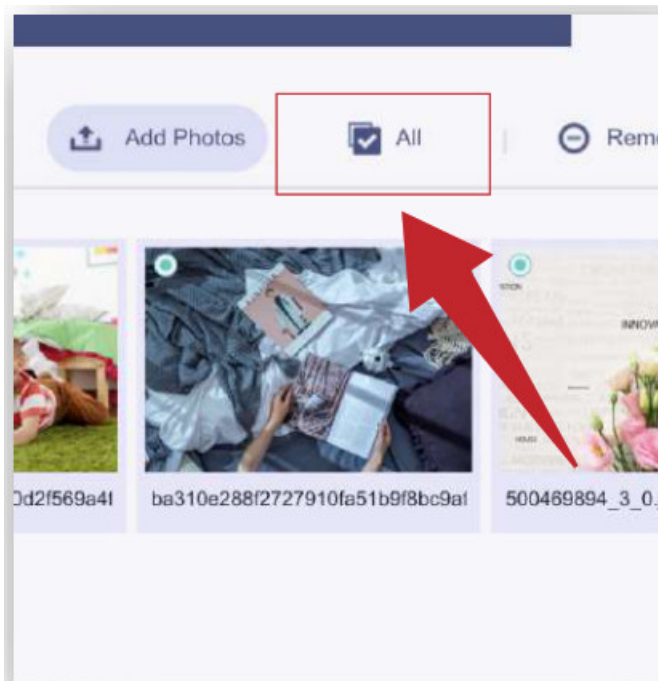
## 2.2 Photo Editing

When the photos are on the list to be transferred, you can edit the photo information, such as adding photos to the existing list, renaming and removing photos, and more.

1. Adding more photos to the existing list.

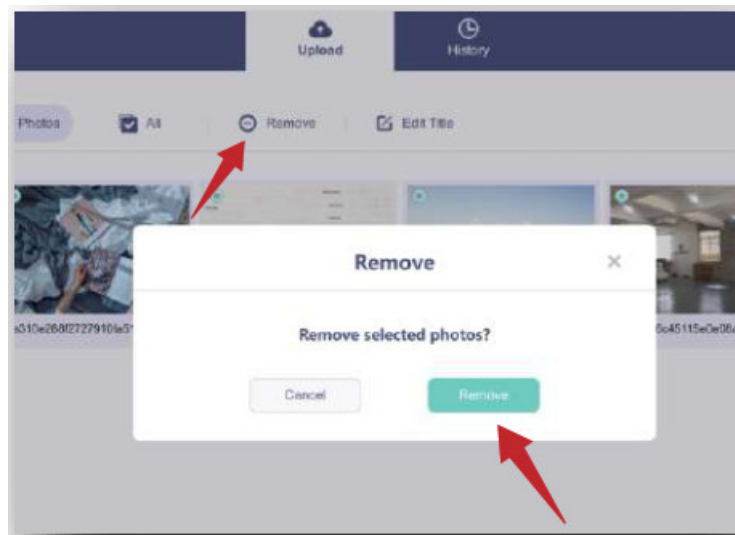


2. Select All: Click [Select All] to select all photos, and the number of selected photos will be displayed in the upper left corner. Click [Select All] again to undo.

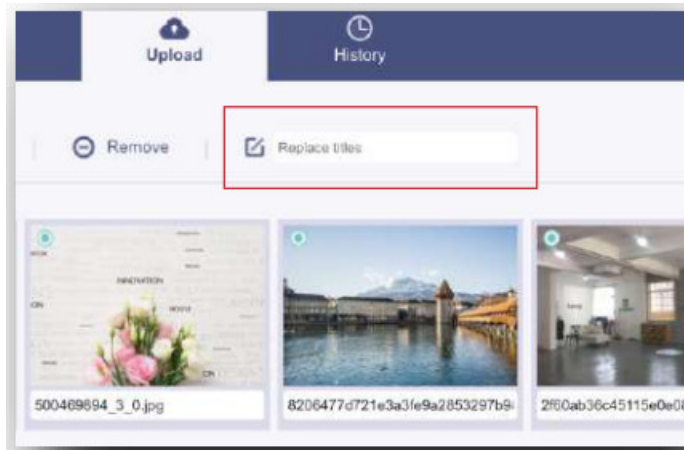


3. Remove: Selected photo(s) can be removed from the current transfer list by clicking [Remove].

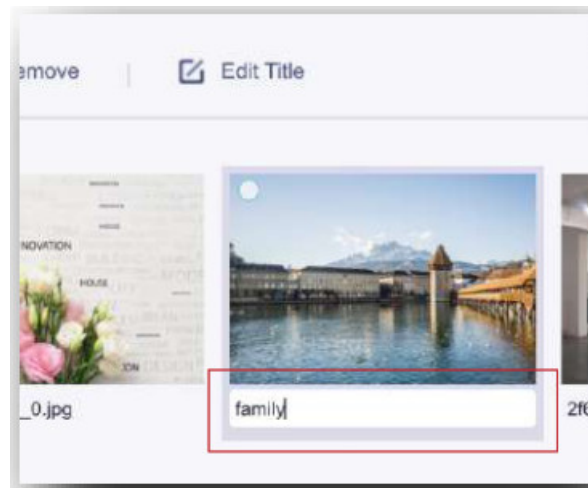




4. Renaming multiple photos: Selected photo(s) can be renamed in batches on the page.



5. Renaming a photo: Supports name re-editing for a selected photo.

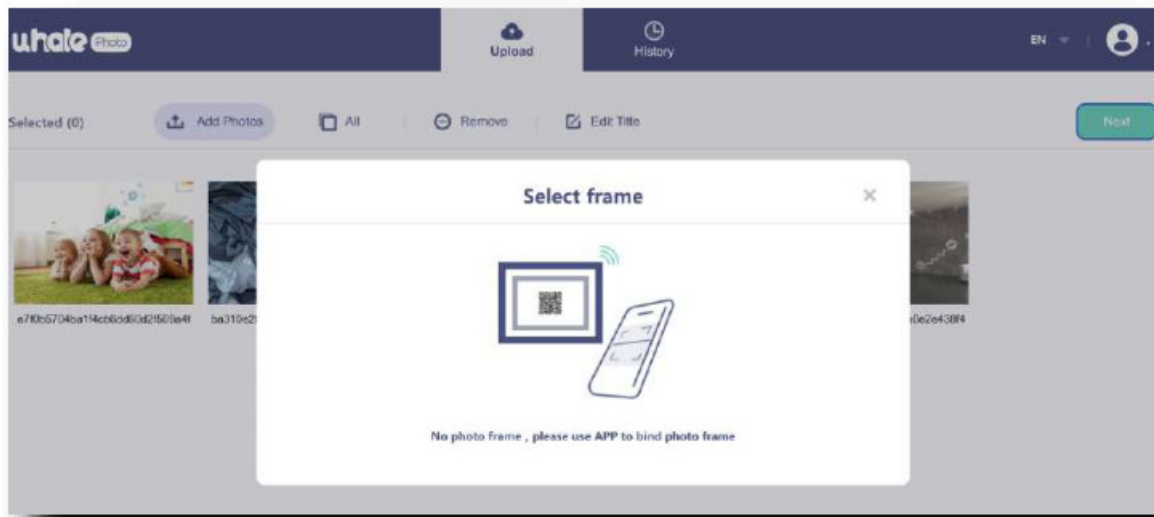


**NOTE:** Exit the editing mode, and select a photo frame to complete photo sharing. Photo(s) cannot be shared under editing mode.

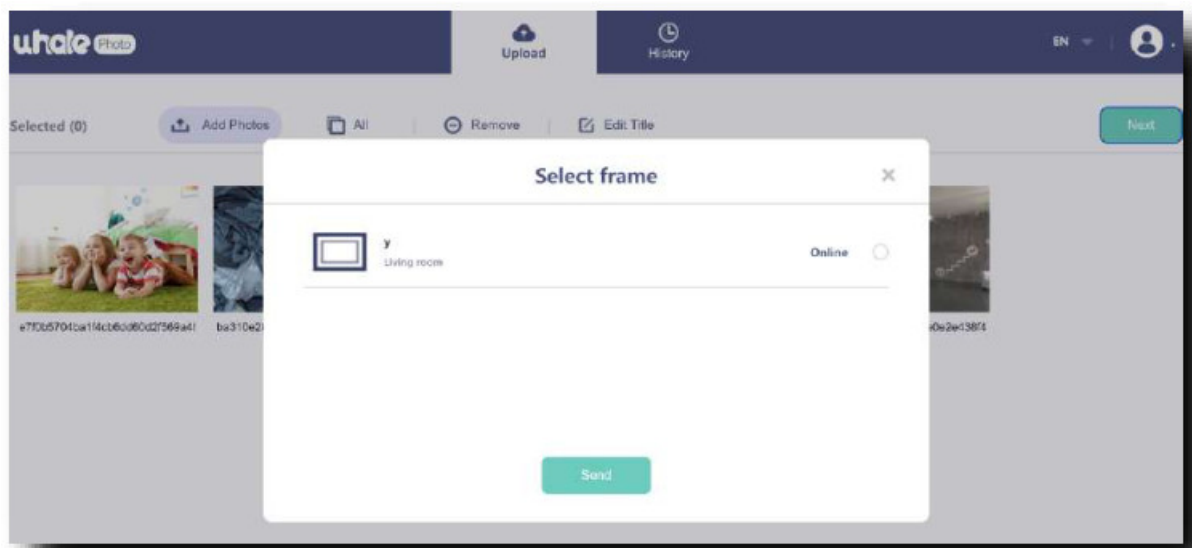
### 2.3 Frame selection

When finishing editing all photos, click [Next] to select a photo frame. If there is a binding device, the online photo frame information will be displayed; and if there is no binding device, you will be prompted to go to the APP to bind one.

Offline display:

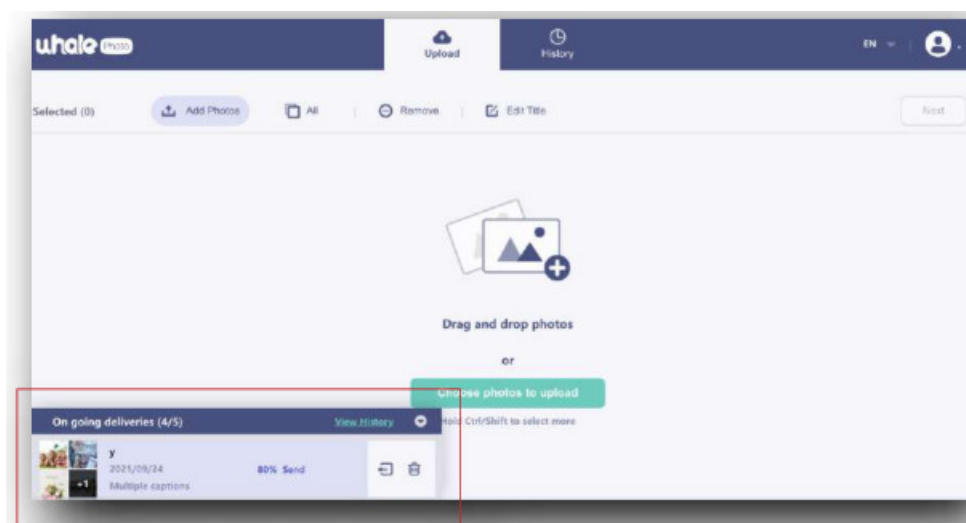


Online display:



## 2.4 Send

Select the photo frame and click [Send]. Then, a task will be created in the taskbar. Check the photo sending progress on the page or click [History] to view it.



## 3. Taskbar

The Taskbar displays the photo transfer tasks for users to check to send progress. The Taskbar supports quick operations, including re-send, withdrawing, deleting, and more.



1. View history: Click [View History] to jump to the historical record. The functions of the historical record are the same as Taskbar; but here, you can view the transmission details of a single task.
2. Maximize/Restore down the Taskbar: When the taskbar is maximized, scroll up and down to view each transmission task; restore down to display in a smaller window.
3. Resend: Re-select the photo frame to send the photo(s) again.
4. Withdraw: Withdraw photo(s) from the photo frame.
5. Delete: Delete the current task.

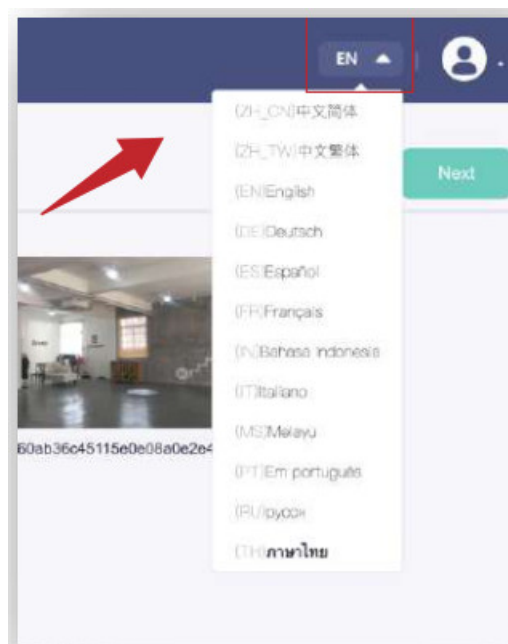
#### 4. History

History obtains the same functions as Taskbar but here, you can view the details of a task to check the transferring status of the photo(s) (successful, transferring, failed).

#### 5. Profile

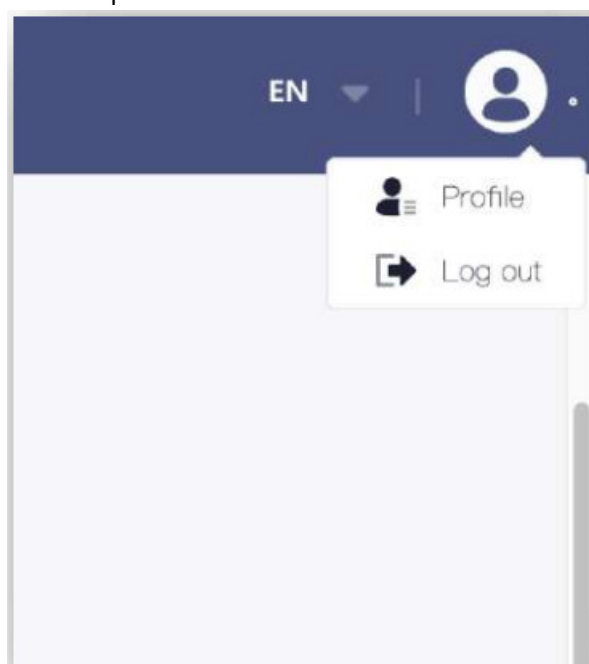
##### 5.1 Switching languages

Currently, switching amongst 12 languages is supported.

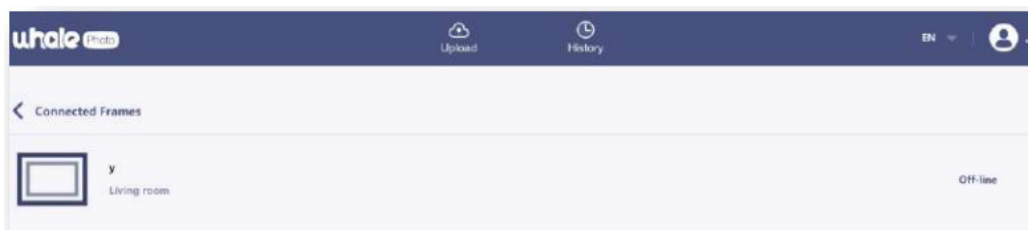


##### 5.2 Profile

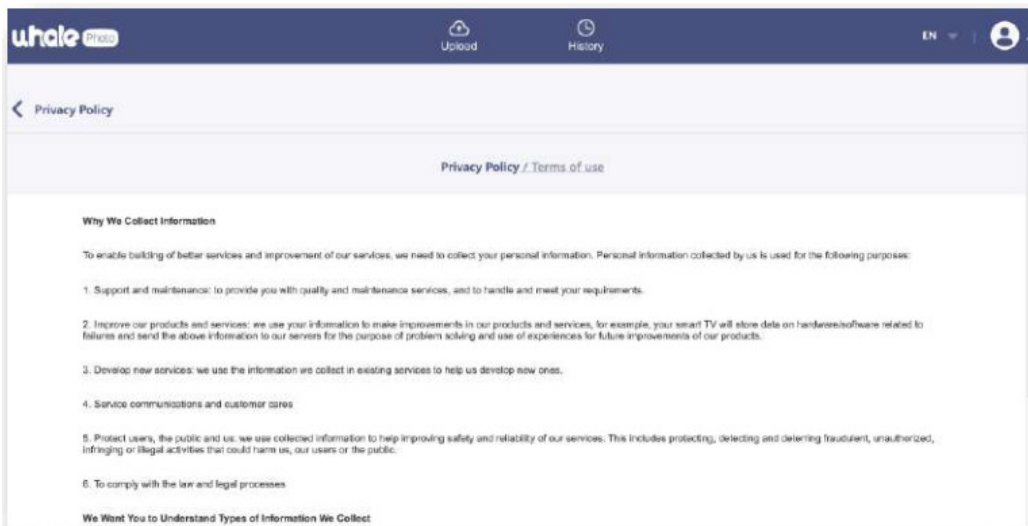
Basic information is displayed under the profile section.



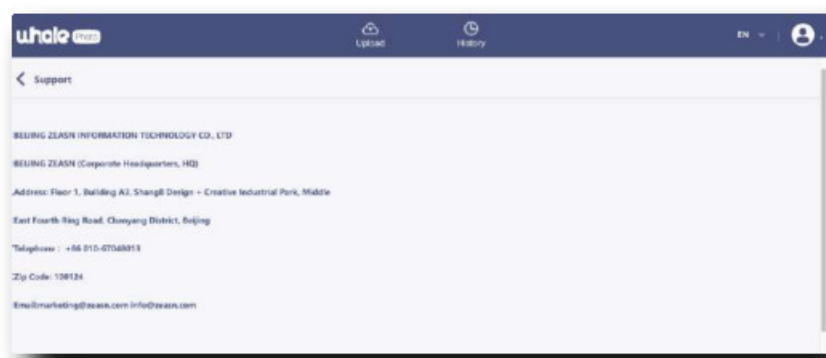
1. Connected frames: Display information of connected frames, name, location, and status.



2. Privacy Policy: Displays Privacy Policy and Terms of Use.



3. Support: displays contact information of the support team.



## 1. Whale Photo APP

### 1.1 Introduce the Whale Photo Frame

Whale Photo Frame displays wonderful moments shared by mobile devices. Touch-screen operation is easy to use, making sharing photos and videos smoother and more convenient.

### 1.2 Download the Whale Photo App

To send photos to your frame by using the Whale Photo App for ios or Android.

Download the App by scanning the QR code



Find the Whale Photo App on:

- Android: Search for “Whale Photo” on Google Play
- iOS: search for “Whale Photo” on the App Store

## 2. How to use Whale Photo Frame

### 2.1 Quick setup

When starting your frame for the first time, you will need to set up the frame.

- Whale Photo Frame may request to upgrade to the latest version. If so, it is recommended to upgrade the photo frame before proceeding.
- Choose a language you preferred as the default
- Connect the photo frame to the Internet via Wi-Fi.
- Name the photo frame (Eg: Jack's Frame); Set the location of the photo frame (Eg: Living Room, Kitchen, Office);
- Set the time zone if needed.
- Check the quick guide on the Whale Photo frame.

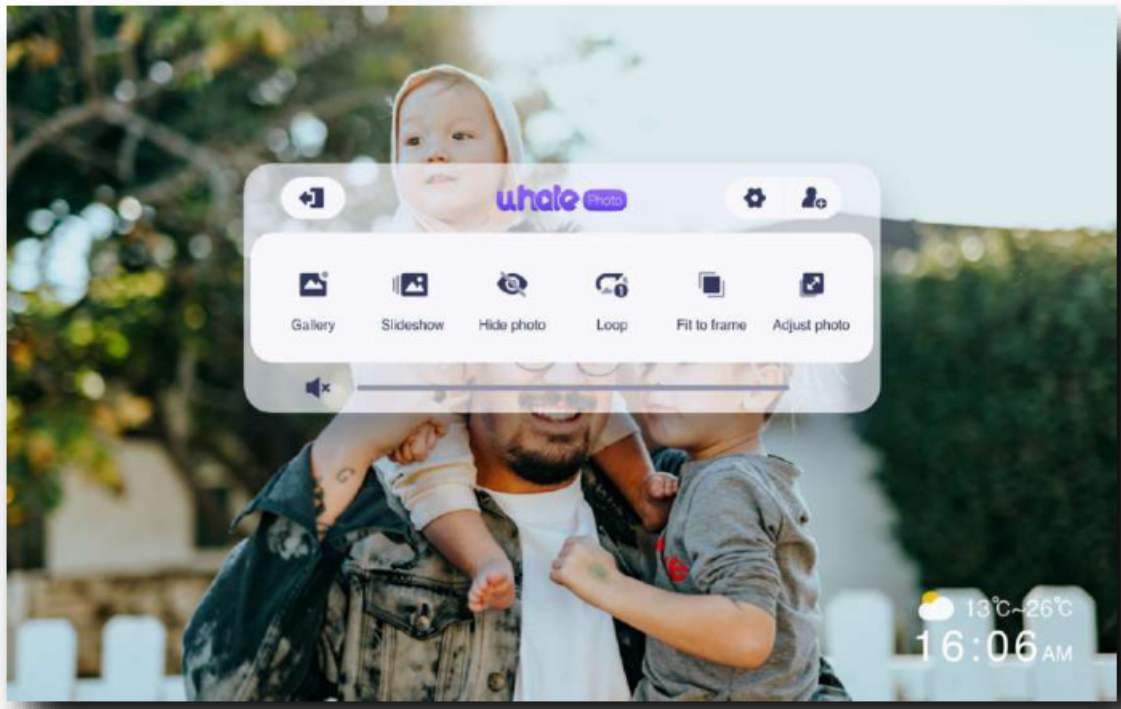
### 2.2 Connecting a new friend

- Make sure that your friend has downloaded and installed the Whale Photo App (See 1.2).
- Click the “Add friend” icon on your frame. A dialog will appear showing both the QR code and SN code (valid for 12 hours).
- Now share either the QR code or the SN code through your preferred way E.g. SMS, E-Mail, IM, or phone call, to your friend.


Once the frame is connected to your friend's Whale Photo App, you will be able to find them on the sharing list on the frame.

### 2.3 Navigating your Whale Photo

You interact with your frame through its touchscreen. To browse your photos, swipe left or right. To access the menu bar, simply tap once on the screen.



### 2.3.1 Power Icon

Click the power icon  you can choose from three options: power off, restart, and sleep.



POWER OFF

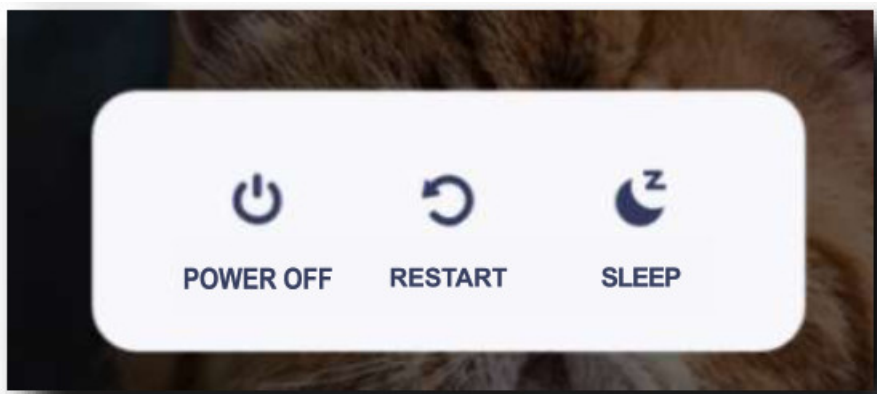


RESTART



SLEEP

Click **POWER OFF** to power off, click **RESTART** to reboot, and click **SLEEP** to switch to sleep mode.



**Note:** Remember always to turn the frame off properly by using the physical button on the device or tapping the power off icon in the interface. Do not disconnect the power adaptor directly while the photo frame is running.

### 2.3.2 Connecting with your friend

SN and QR codes are generated for device connection by tapping the icon[Add Friend]. Use either of the two to connect the frame with mobile devices to enable photo sending.

### 2.3.3 Gallery

Open the gallery and browse media sources in the gallery.

- In the gallery, you can view photos shared by different accounts;
- In the gallery, you can hide categories to view more photos;
- In the gallery, you can view photos in chronological order/reverse order;
- In the gallery, you can only view videos or photos.

### 2.3.4 Loop/ Sequence

To set the picture display mode: select [Loop], the current photo or video will be presented in a loop; select [Sequence] to play the contents of the gallery in sequence.

### 2.3.5 Settings

For more options in settings.

### 2.3.6 Hide/Show photos

Hide the current photo. It means this photo will no longer be displayed in the slide show but still be stored in the library. Go to settings-> Manage photos-> Show/hide photos.

### 2.3.7 Fill frame/Fit to frame

This function is to switch the photo display mode in the frame. Fill the frame: It is the default display mode. The photo is scaled proportionally to fit the entire frame. Fit to frame: the entire photo is displayed in the frame in its original proportion.



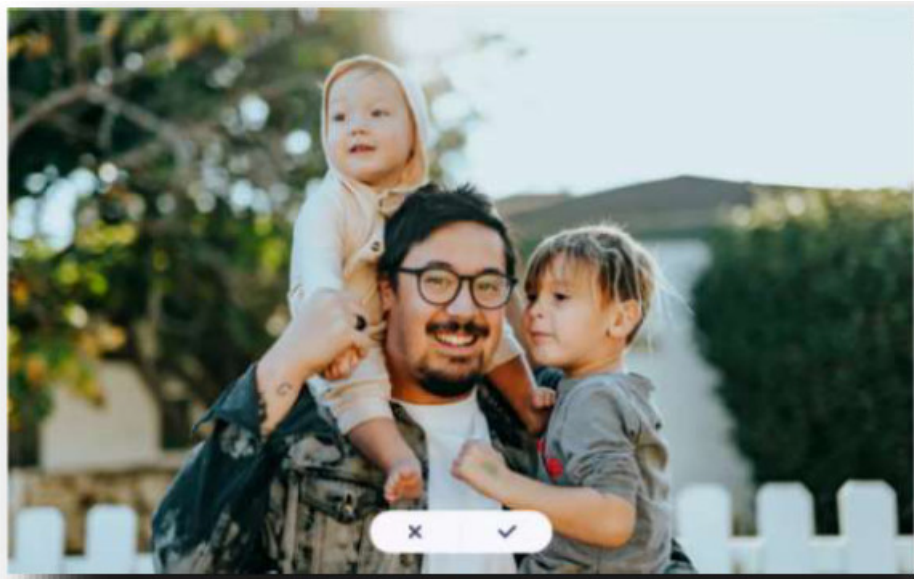
Fill frame



Fit to frame

### 2.3.8 Adjust photos

This only appears when "fill frame" is selected. Select the part of the photo to be displayed.



### 2.3.9 Slideshow

Set the playback effect through the menu's [Slideshow]. The above 6 effects are provided but are only valid for the photo slideshow.

#### • Connecting through the Website

The operation is the same as the App. If the App is already connected, the status will be automatically synchronized on the PC.

### 1.2 "Work with Alexa" skills



NO	Skill	Remark
1	Alexa, turn off " Frame "	Turn on sleep mode
2	Alexa, turn on " Frame "	Turn off sleep mode
3	Alexa, volume up on " Frame "	Volume up
4	Alexa, volume down on " Frame "	Volume down
5	Alexa, mute on " Frame "	Mute
6	Alexa, unmute on " Frame "	Unmute
7	Alexa, go home on " Frame "	Go to the Home Page
8	Alexa, go to settings on " Frame "	Go to Settings
9	Alexa, play on " Frame "	Video playback
10	Alexa, pause on " Frame "	Video pause
11	Alexa, previous on " Frame "	Previous
12	Alexa, next on" Frame "	Next

## Guarantee

If the product does not meet your expectations, please feel free to contact us through "contact seller", excellent after-sales service will be completed within 24 hours.

**Contact Information:** Email:[xiskt@outlook.com](mailto:xiskt@outlook.com)

## Documents / Resources

	<a href="#">XISK Digital Photo Frame with Whale Photo App [pdf] User Manual</a> X15, 2A8SI-X15, 2A8SIX15, Digital Photo Frame with Whale Photo App, Digital Photo Frame, Photo Frame with Whale Photo App, Whale Photo App
	<a href="#">XISK Digital Photo Frame with Whale Photo App [pdf] User Manual</a> X15, 2A8SI-X15, 2A8SIX15, Digital Photo Frame with Whale Photo App, Digital Photo Frame, Whale Photo App, Photo Frame