

XINMENG N520 Bluetooth 2.4GHz Rechargeable Wireless Keyboard and Mouse Set Instruction Manual

[Home](#) » [XINMENG](#) » XINMENG N520 Bluetooth 2.4GHz Rechargeable Wireless Keyboard and Mouse Set Instruction Manual 

Contents

- [1 XINMENG N520 Bluetooth 2.4GHz Rechargeable Wireless Keyboard and Mouse Set](#)
- [2 Product features](#)
- [3 Keyboard FN key operating instructions](#)
- [4 Precautions](#)
- [5 FCC Requirement](#)
- [6 Documents / Resources](#)
- [7 Related Posts](#)



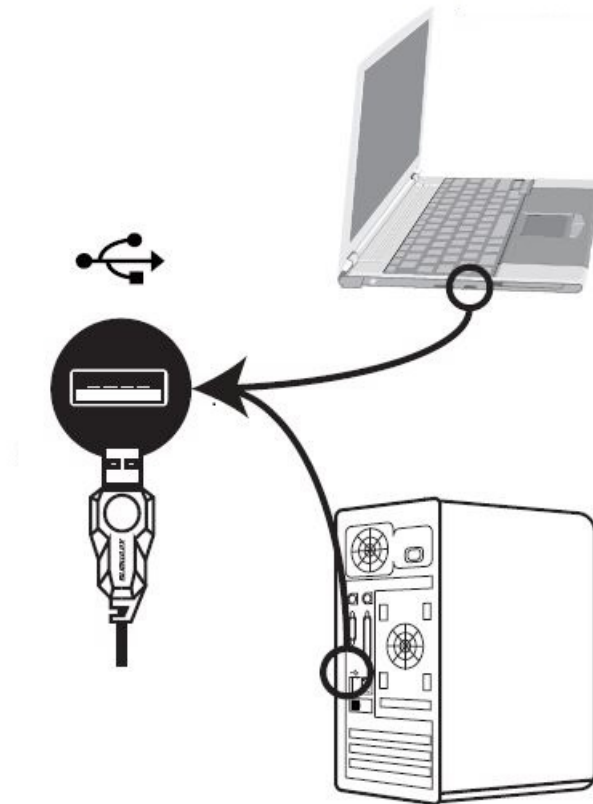
XINMENG N520 Bluetooth 2.4GHz Rechargeable Wireless Keyboard and Mouse Set



Product features

RIF8n2-20 wireless Bluetooth dual-mode mouse set, keyboard, and mouse are using Bluetooth 5.0 2.4GRF mode can run on the computer Windows 2000, Windows XP, Vista, VWin7, Win8, Wn10, Product standard and 2.4GRF standard- two operating modes connected to the relevant device control, product Euetooth mode can run in-moble Android 50 and computer Wint0 system work.

Hardware requirements



- A phone or computer with Bluetooth 50 standard and a USB port available or connected devices.

Bluetooth installation steps and instructions for use:

Keyboard Bluetooth on the phone to connect to the code installation steps and use: when using the keyboard Bluetooth channel, the keyboard power switch to the ON position, and then press and hold FN1, EBluetooth broadcast key, then the keyboard power light will flash behind, and then turn on the phone, click on the phone 'settings' icon to turn on the Bluetooth switch green when the phone appears BT Keyboard", directly click the connection, so that the phone and keyboard Bluetooth can be docked. Keyboard Bluetooth on the computer to connect the code installation steps and use: When you want to use the keyboard Bluetooth changed, the keyboard power switch to the ON position, and should first click on the computer (start) select the 'Control Panel' and then click "Add Device computer will appear to add devices interface, then to press and hold the keyboard's FN1 key or code broadcast, see the keyboard power indicator will flash blue light when the computer interface appears keyboard icon, and then click the "Keyboard icon BT Keyboard" after selecting Add devices Follow the prompts, the computer and keyboard Bluetooth will be connected to install The insertion method of different systems vary, such as the installation steps on the computer MN-10 on the computer click Start select Device select Bluetooth and in the list select Keyboard connection according to the interface dialogue operation to complete the connection Mouse Bluetooth on the phone to connect to the code installation steps and use when using the mouse Bluetooth channel, the mouse power switch to Bluetooth-BT position, and then press the mouse bottom to code key, then the mouse bottom light will flash blue light, and then turn on the phone, click on the phone "Settings icon to turn on the Bluetooth Switch green, when the phone appears BT5.1 Mouse, directly click the connection, so that the phone and the mouse Bluetooth can be completed docking.

Mouse Bluetooth on the computer to connect to the code installation steps and use

When you want to use the mouse Bluetooth channel, please hit the mouse power switch to the BT position, and should first check on the computer (start) select Control Panel and then Add Device. COMPUTER will appear to add devices the first time, then press the bottom of the mouse code key or code broadcast, the mouse Bluetooth knight will flash when the computer interface appears mouse icon, and then click the mouse icon BT. After selecting "Add Device" Follow the prompts, the computer and mouse Bluetooth be connected. The instant method of different systems varies, such as the installation steps on the computer. On the computer click Start select Device" select "Bluetooth and in the last select Mouse icon point pairing depending on the interface operation to complete the connection. Wireless 2.4G installation steps and instructions for use Keyboard 2.4G wireless installation steps and use: when using the keyboard 2.4G chord, the keyboard power switch to the ON position, in the open labor power state press FN 2 key, then the keyboard CAPS BMP will flash green light, then plug the receiver into the computer USB port, then the computer will automatically code and install the corresponding adaptation software, the general computer will prompt; The installation complete and can be used, indicating that the keyboard and computer 2.4G code success. Mouse 2.4G wireless installation steps and use: when using the mouse 2.4G channel. the mouse power switch to 2.4G position, press the key at the bottom of the mouse 2.4G get will flash green light, then plug the receiver into the computer USB port, then the computer will automatically code and install the corresponding adaptation software, the general computer will prompt The installation is complete and can be used, which indicates that the mouse and the computer 2.4G code Success.

Instructions for charging

RFB02-V203 This kit comes with only TYPE-C charging cable at random, which can be connected to the DC-5V-USB port power supply to charge the keyboard or mouse separately. You can also plug directly into the computer USB port to charge the keyboard or mouse, charging the inside of the product charging light-weight up, fully charged charging It will be extinguished. It is recommended that when using the new wireless product for the first time, the keyboard should be fully charged with a tapered charging cable connected to the computer USB port or DC-5V charger. When charging, observe the direction of the cable TYPE-C head carefully inserted into the charging hole of the keyboard or mouse to avoid too much force damaging the port.

Keyboard FN key operating instructions

FN+1 keypress and holds the Bluetooth broadcast pair, and tap and switch Bluetooth modes
 FN+2 keypress and holds the 2.4G a pair. Short press switch 2.4G wireless mode.

- F+F1 Music
- F F2-volume choose
- FN F3 volume up
- FN+F4 Mute
- FN+F5-Previous song
- FN+F6-next song
- FN+F7-play pause
- FN+FN Stop
- FN+FN9-home page
- FN+FN10-Email
- FN-FN11-Computer
- FN+FN12-Connections
- FN+DEL Keyboard about connection with back keyboard
- FN1/ Lightness mining section
- FN+ -Breathing or changing color. Or we tech keyboard

Precautions

The keyboard and mouse of the RF802V203 page are shared with a 24G wireless receiver, which is configured within the mouse, please check carefully. This product does not support WN7 and version 30 Bluetooth systems. When plugging in the receiver the computer can not recognize the use, should first consider is caused by a poor port contained to replace plug another computer USB port to use. When the product is in normal use for a period of time, there is a moment of operation. She first suspects that the product's built-in battery is low, to charge in time, charging time will be the same as the charger power size will to a short time. If the product is not used for a time, please hit the product power switch to the OFF position when the product appears in the use of the card or suddenly do not move, in addition to excluding is the cause of low battery voltage, Bluetooth should to 2.4G consider or this from 2.4G the environment to Bluetooth has made the same frequency signal interference caused, then you can switch is also possible to use 2.4G re-code solution, code-to-code method as shown above (on-time code can be repeated). If the above method can not be rescued, please call the New Allance product service hotline: 40-000-1358 to solve. New Allance wireless products are built lithium-electric design, keyboard use (more than 1000 mAh Lithium mouse use (more than 600 mAh lithium electricity) so for user safety, products can only be used at room temperature please do not use at high temperature or near the source of fire. Product damage disposal If the product damage can not be repaired, do not disassemble or throw it into the fire to avoid accidental danger. Professional waste disposal stations or special recycling bins should be sent for disposal.

List of items

- TYPE-C charging cable one.
- One copy of the instruction manual warranty card
- 2.4G receiver one

FCC Requirement


changes or modifications not expressly approved by the party responsible for compliance could void the user's authority to operate the equipment. This device complies with Part 15 of the FCC Rules. Operation is subject to the following two conditions:

1. this device may not cause harmful interference.
2. this device must accept any interference received, including interference that may cause undesired operation.

Note: This equipment has been tested and found to comply with the limits for a Class B digital device, pursuant to Part 15 of the FCC Rules. These limits are designed to provide reasonable protection against harmful interference in a residential installation. This equipment generates, uses, and can radiate radio frequency energy, and if not installed and used in accordance with the instructions, may cause harmful interference to radio communications. However, there is no guarantee that interference will not occur in a particular installation. If this equipment does cause harmful interference to radio or television reception, which can be determined by turning the equipment off and on, the user is encouraged to try to correct the interference by one or more of the following measures:

- Reorient or relocate the receiving antenna.
- Increase the separation between the equipment and receiver.
- Connect the equipment into an outlet on a circuit different from that to which the receiver is connected.
- Consult the dealer or an experienced radio/TV technician for help.

Documents / Resources

	<p>XINMENG N520 Bluetooth 2.4GHz Rechargeable Wireless Keyboard and Mouse Set [pdf] Instruction Manual</p> <p>N52, 2A6NE-N52, 2A6NEN52, N520, Bluetooth 2.4GHz Rechargeable Wireless Keyboard and Mouse Set, N520 Bluetooth 2.4GHz Rechargeable Wireless Keyboard and Mouse Set</p>
---	---

