

XIGMATEK APACHE PLUS CPU Cooler User Manual

[Home](#) » [XIGMATEK](#) » XIGMATEK APACHE PLUS CPU Cooler User Manual 

Contents

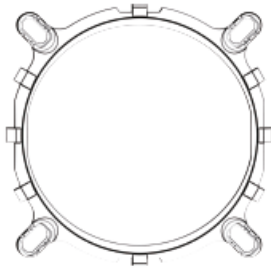


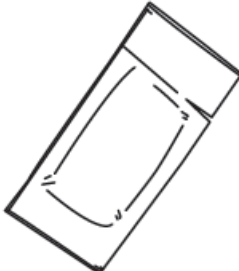
- [1 XIGMATEK APACHE PLUS CPU Cooler](#)
- [2 Accessories](#)
- [3 Installation](#)
- [4 LGA 1700/115 & 1200/775](#)
- [5 AM5/AM4/AM3/AM2](#)
- [6 Documents / Resources](#)
 - [6.1 References](#)



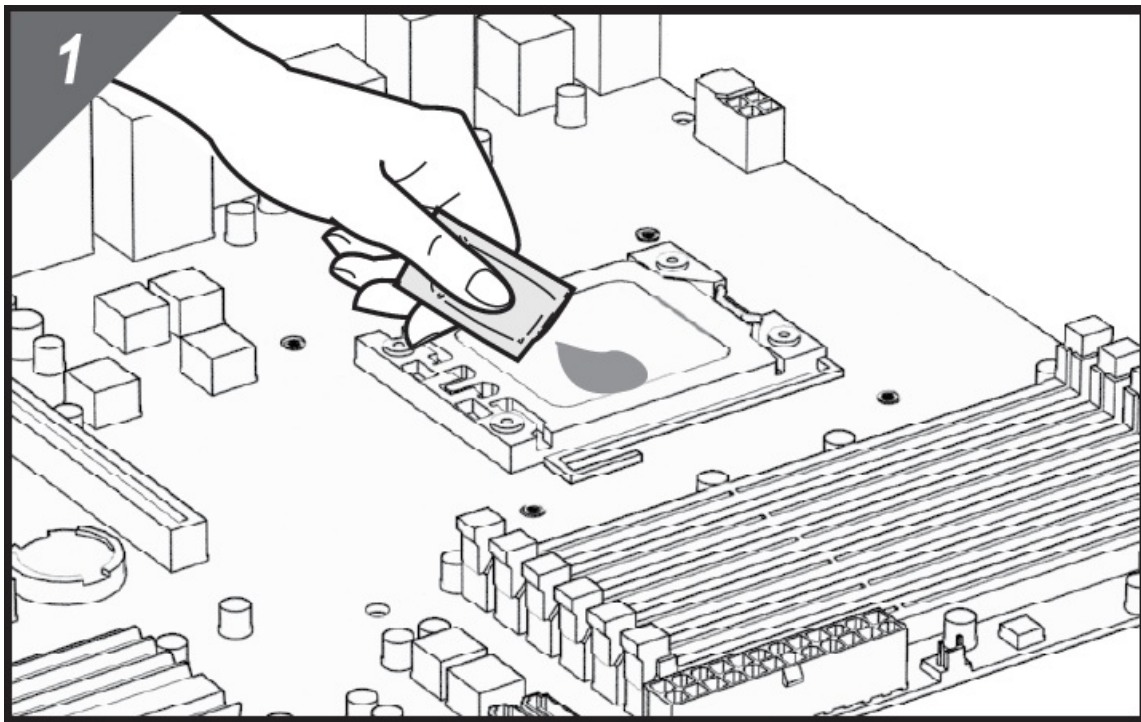
XIGMATEK APACHE PLUS CPU Cooler



Accessories

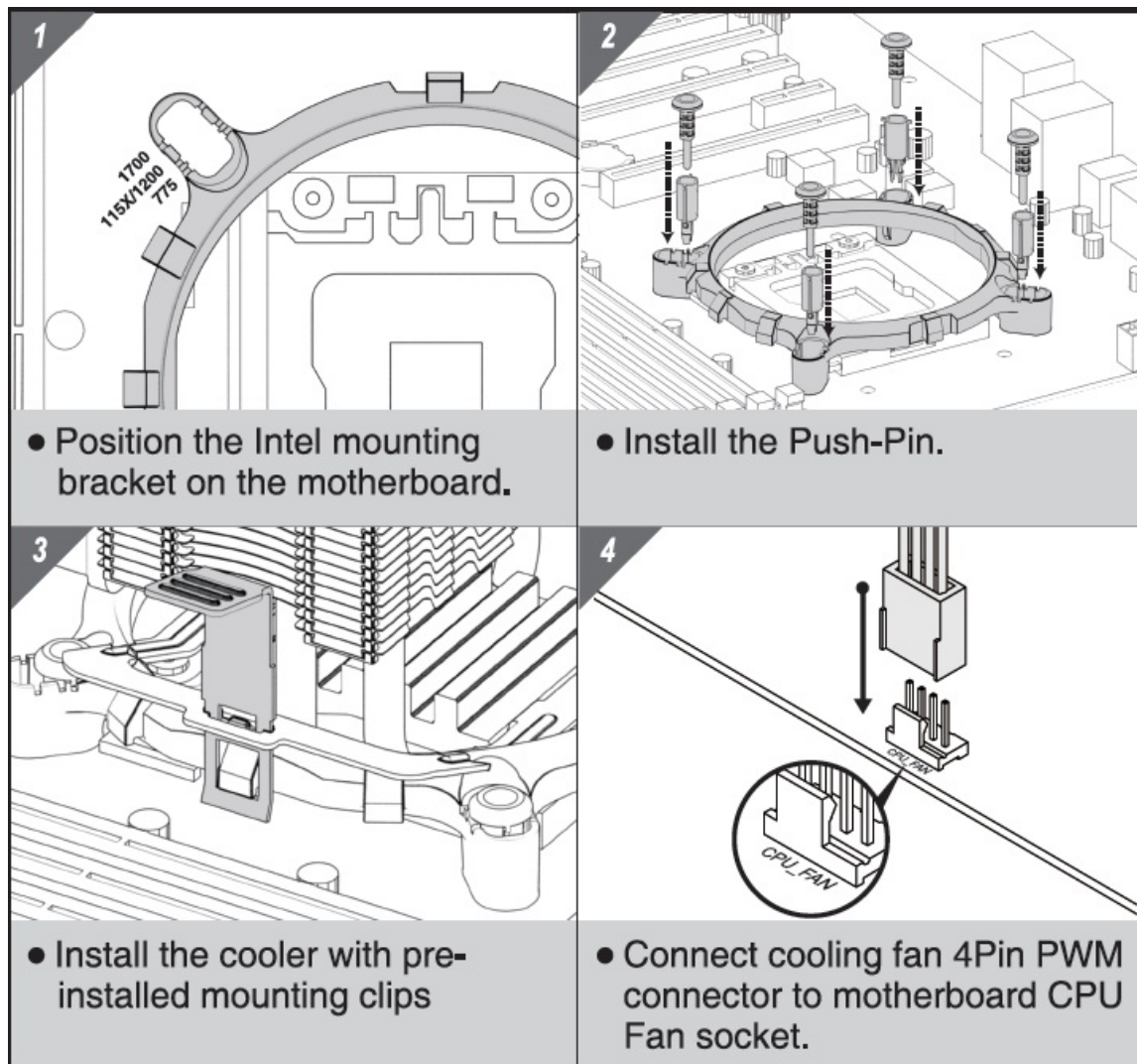
<p>1</p>  <p>Intel Mounting Bracket Intel 散熱器固定支架</p>	<p>2</p>  <p>X4</p> <p>Push-Pin Male Push-Pin固定扣 (公頭)</p>	<p>3</p>  <p>X4</p> <p>Push-Pin Female Push-Pin固定扣 (母座)</p>
<p>4</p>  <p>X1</p> <p>Thermal Paste 散熱膏</p>		

Installation

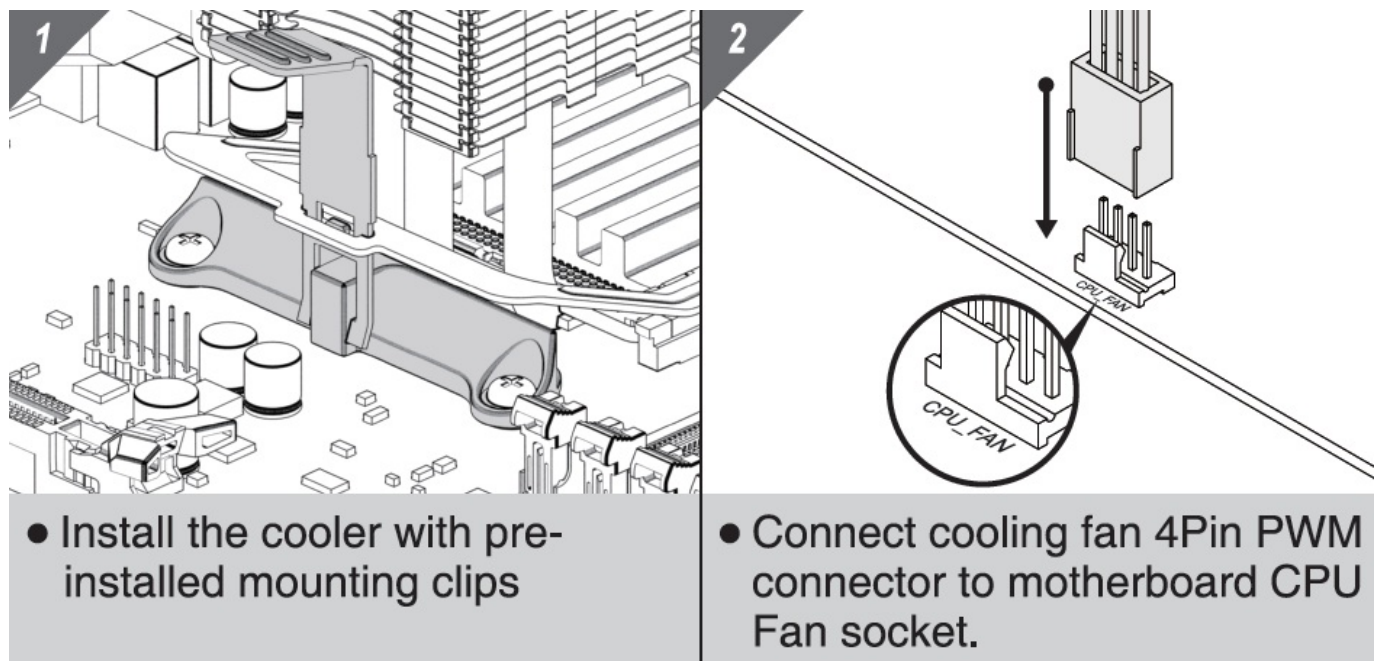


Apply and spread thermal grease evenly on the CPU surface.

LGA 1700/115 & 1200/775

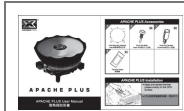


AM5/AM4/AM3/AM2



1. Keep and store the product away from the reach of children.
2. Check the component list and condition of the product before installation. If there is any problem, contact the shop where you purchased to get a replacement or refund.
3. Xigmatek Co., Ltd. is not responsible for any damages due to external causes, including but not limited to, improper use, problems with electrical power, accident, neglect, alteration, repair, improper installation, and improper testing.
4. CPU and motherboard are subject to damage if the product is incorrectly installed.

Documents / Resources



[XIGMATEK APACHE PLUS CPU Cooler](#) [pdf] User Manual
APACHE PLUS CPU Cooler, APACHE PLUS, CPU Cooler, Cooler

References

- [User Manual](#)

[Manuals+](#), [Privacy Policy](#)

This website is an independent publication and is neither affiliated with nor endorsed by any of the trademark owners. The "Bluetooth®" word mark and logos are registered trademarks owned by Bluetooth SIG, Inc. The "Wi-Fi®" word mark and logos are registered trademarks owned by the Wi-Fi Alliance. Any use of these marks on this website does not imply any affiliation with or endorsement.