



XIEXUN CS5 Wireless HDMI Transmitter and Receiver User Guide

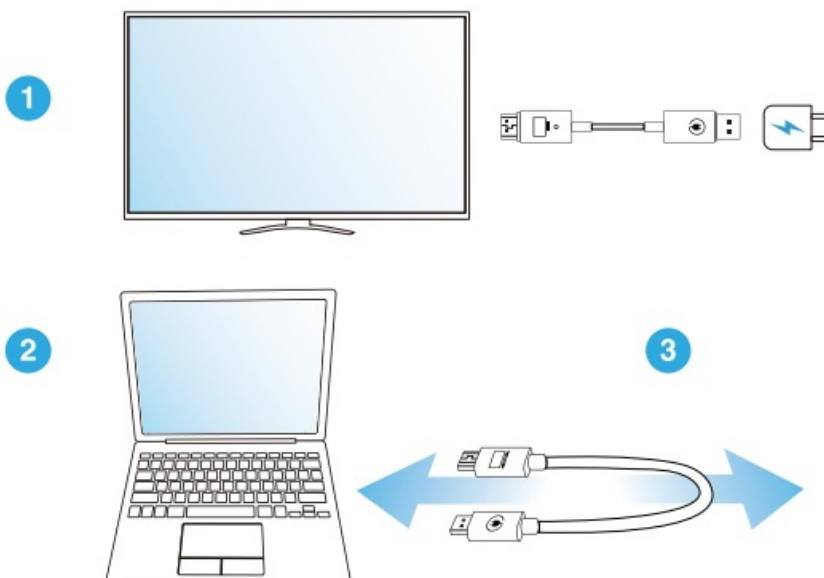
[Home](#) » [XIEXUN](#) » XIEXUN CS5 Wireless HDMI Transmitter and Receiver User Guide 

Contents

- [1 XIEXUN CS5 Wireless HDMI Transmitter and Receiver User Guide](#)
- [2 Documents / Resources](#)
 - [2.1 References](#)
- [3 Related Posts](#)

XIEXUN CS5 Wireless HDMI Transmitter and Receiver User Guide

CS5 Quick Start Guide



1. Install receiver:

Connect the wireless display receiver to your screen and power it on.

2. Plug and mirror:

Plug the transmitter to laptop, connect it to the power supply and wait for mirroring automatically.

3. Stop and restart:

Remove the transmitter to stop mirroring, and plug the transmitter to restart mirroring.

*** If unable to mirror, please pair your transmitter to the receiver again.**

This device complies with Part 15 of the FCC Rules. Operation is subject to the following two conditions: (1) this device may not cause harmful interference, and (2) this device must accept any interference received, including interference that may cause undesired operation.

– Warning: Changes or modifications to this unit not expressly approved by the party responsible for compliance could void the user's authority to operate the equipment.

– NOTE: This equipment has been tested and found to comply with the limits for a Class B digital device, pursuant to Part 15 of the FCC Rules. These limits are designed to provide reasonable protection against harmful interference in a residential installation. This equipment generates, uses and can radiate radio frequency energy and, if not installed and used in accordance with the instructions, may cause harmful interference to radio communications.

However, there is no guarantee that interference will not occur in a particular installation. If this equipment does cause harmful interference to radio or television reception, which can be determined by turning the equipment off and on, the user is encouraged to try to correct the interference by one or more of the following measures:


- Reorient or relocate the receiving antenna.
- Increase the separation between the equipment and receiver.
- Connect the equipment into an outlet on a circuit different from that to which the receiver is connected.
- Consult the dealer or an experienced radio/ TV technician for help.



#5989811

Transmit and receive audio/video signals wirelessly 1080P resolution

Documents / Resources

	XIEXUN CS5 Wireless HDMI Transmitter and Receiver [pdf] User Guide CS5, CS5 Wireless HDMI Transmitter and Receiver, Wireless HDMI Transmitter and Receiver, HDMI Transmitter and Receiver, Transmitter and Receiver, Receiver
---	--

References

- [User Manual](#)

[Manuals+](#), [Privacy Policy](#)

This website is an independent publication and is neither affiliated with nor endorsed by any of the trademark owners. The "Bluetooth®" word mark and logos are registered trademarks owned by Bluetooth SIG, Inc. The "Wi-Fi®" word mark and logos are registered trademarks owned by the Wi-Fi Alliance. Any use of these marks on this website does not imply any affiliation with or endorsement.