

Contents [[hide](#)]

- [1 Xiaomi R4AC Mi Router 4A](#)
- [2 Product Usage Instructions](#)
- [3 Specifications:](#)
- [4 FAQs](#)
- [5 Documents / Resources](#)
 - [5.1 References](#)



Xiaomi R4AC Mi Router 4A



Product Usage Instructions

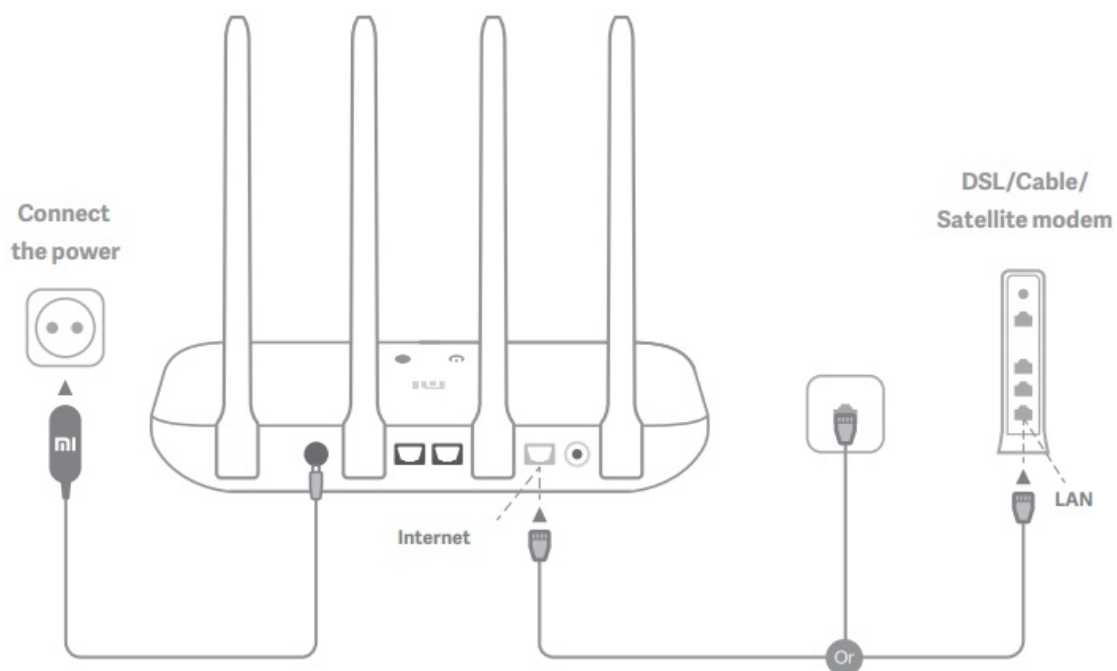
Setting Wi-Fi Details

1. Set a new Wi-Fi name and password along with an administrator password.
2. Wait for the indicator light to turn blue and stop flashing before reconnecting to the Wi-Fi network.

Managing the Network

- Visit router.miwifi.com for web management and basic Internet functions.
- Download the Mi WiFi app for remote management of your router.

Step 1: Connect the cables



Power on the router, then connect the Internet (WAN) port to the DSL/Cable/satellite modem

- If your Internet network is connected by a network cable via the Internet wall socket, connect the cable directly to the router's WAN port

Step 2: Set up the network connection

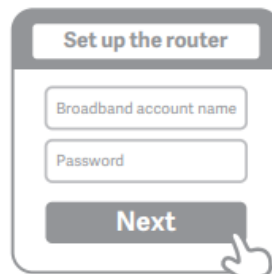
1. Connect to the Wi-Fi using a phone or computer(no password). Refer to the information on the bottom of the router for the Wi-Fi name * Wait until the system indicator light POWER turns blue. Search for the Wi-Fi network and connect
2. Once the Wi-Fi is connected, you will be directed to the configuration page. If the

configuration page is not present, open the browser and go to “router.mi-wifi.com” or “192.168.31.1” to complete the configuration

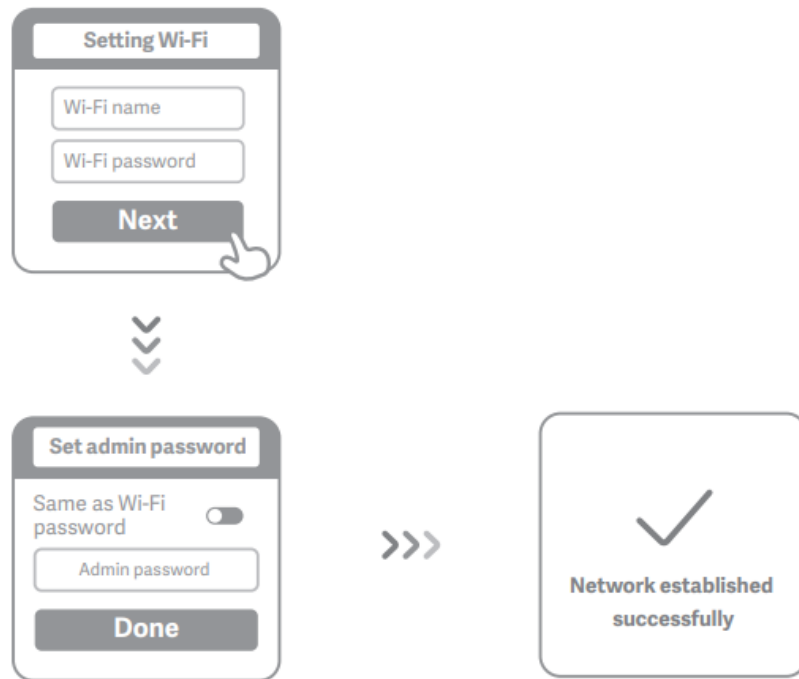
- Mi Router EULA is available at –

<http://www1.miwifi.com/router/eula/20191230.html>

3. Enter the account name and password provided by your broadband provider, then click/tap Next (It depends on the Internet Service Provider you selected, whether your account name and password are required or not)
 - If you have forgotten your broadband account name or password, please contact your broadband provider



4. Set a new Wi-Fi and administrator password. You can choose to use your Wi-Fi password as your administrator password as well
 - Please wait until the indicator light turns blue and stops flashing, then reconnect to the Wi-Fi



Manage Mi WiFi

The web management website is router.miwifi.com and supports basic Internet functions. Scan the QR code, download the Mi WiFi app, and manage your router anytime, anywhere.



QoS



Unauthorized access prevention



Wi-Fi optimization



More features

Specifications:

- Name: Mi Router 4A
- Model: R4AC
- Operating Temperature: 0~40°C
- Input: 12V, 1A
- Operating Frequency: 2400MHz~2483.5MHz(≤20dBm),

5150MHz~5250MHz($\leq 23\text{dBm}$) Power Consumption: Networked standby mode: $\leq 3.0\text{W}$

- Time to Enter the Condition: Networked standby mode: ≤ 1 min

Note The network standby power consumption is 3.9 W, if all wired network ports are connected and all wireless network ports are activated.

Certifications:

- Hereby, Xiaomi Communications Co., Ltd declares that the radio equipment type R4AC is in compliance with Directive 2014/53/EU, Directive 2011/65/EU and Directive 2009/125/EC. The full text of the EU declaration of conformity is available at the following internet address: <http://www.mi.com/global/service/support/declaration.html>
- For detailed e-manual, please go to <https://www.mi.com/global/support/user-guide>



All products bearing this symbol are waste electrical and electronic equipment (WEEE as in directive 2012/19/EU) which should not be mixed with unsorted household waste. Instead, you should protect human health and the environment by handing over your waste equipment to a designated collection point for the recycling of waste electrical and electronic equipment, appointed by the government or local authorities. Correct disposal and recycling will help prevent potential negative consequences to the environment and human health. Please contact the installer or local authorities for more information about the location as well as terms and conditions of such collection points.

Caution:

- The product can be used within all European Union countries (BE/FR/DE/IT/LU/NL/DK/IE/GB/GR/PT/ES/AT/FI/SE/CY/CZ/EE/HU/LV/LT/MT/PL/SK/SI/BG/RO/HR).
- To comply with CE RF exposure requirements, the device must be installed and operated 20cm (8 inches) or more between the product and all person's body.
- The adapter shall be installed near the equipment and shall be easily accessible.
- You can activate or deactivate the Wi-Fi network in the "Settings" of the management page (router.miwifi.com) .

- Manufactured by: Xiaomi Communications Co., Ltd
- #019, 9th Floor, Building 6, 33 Xi'erqi Middle Road, Haidian District, Beijing, China, 100085

FAQS

I have finished setting up my network. Why can't I connect to the Internet?

- **Step 1:** Search for the Wi-Fi network set by your router on your phone. If not found, ensure the router is powered on and working properly.
- **Step 2:** Connect your phone to the router's Wi-Fi network, visit router.miwifi.com, and troubleshoot based on diagnostics results.

I've forgotten the administrator password for my router. What should I do?

If you haven't set a specific password, try using your Wi-Fi password as the administrator password. If the issue persists, reset your router to factory settings and set up the network again.

How do I restore my router to factory settings?

To reset, ensure the router is working normally, press and hold the Reset button for more than 5 seconds until the system status light turns orange. Release the button after restart completes.

What do the different indicator lights mean on the router?


There should be two indicator lights on the front panel, which are the network status light (blue light) and the system status light (three colors: blue, orange, and purple)



- **Network status light**
 - **Light with one color (blue)**
- **Off**

- Nothing is plugged into the external Internet port or there is a problem with the connection
- **On**
 - Network connection normal
- **Flashing**
 - Sending or receiving data
- **System status light**
 - three colors (blue, orange, and purple)
- **Off**
 - Switched off or not connected to the power
- **Orange**
 - System updating (flashing), system booting up (on, not flashing)
- **blue**
 - Functioning normally (on, not flashing)
- **purple**
 - Safe mode (flashing), system failure (on, not flashing)

Documents / Resources

	<p>Xiaomi R4AC Mi Router 4A [pdf] User Manual</p> <p>25090-Mi-Router-4A, M49 R4AC, R4AC Mi Router 4A, R4AC, Mi Router 4A, Router 4A</p>
---	---

References

- [User Manual](#)

📎 25090-Mi-Router-4A, M49 R4AC, Mi Router 4A, R4AC, R4AC Mi Router 4A, Router 4A,

📁 Xiaomi Xiaomi

—Previous Post

[Xiaomi R4CM Mi WiFi Router 4C User Manual](#)

Next Post—

[Xiaomi 24091RPADG Pad 7 Pro Tablet Instructions](#)

Leave a comment

Your email address will not be published. Required fields are marked *

Comment *

Name

Email

Website

☐ Save my name, email, and website in this browser for the next time I comment.

Post Comment

Search:

e.g. whirlpool wrf535swhz

Search

[Manuals+](#) | [Upload](#) | [Deep Search](#) | [Privacy Policy](#) | [@manuals.plus](#) | [YouTube](#)

This website is an independent publication and is neither affiliated with nor endorsed by any of the trademark owners. The "Bluetooth®" word mark and logos are registered trademarks owned by Bluetooth SIG, Inc. The "Wi-Fi®" word mark and logos are registered trademarks owned by the Wi-Fi Alliance. Any use of these marks on this website does not imply any affiliation with or endorsement.