


 **xiaomi**
M47 4C Mi Router



xiaomi M47 4C Mi Router User Manual

[Home](#) » [Xiaomi](#) » xiaomi M47 4C Mi Router User Manual 

Contents

- 1 xiaomi M47 4C Mi Router
- 2 Product Usage Instructions
- 3 Connect the cables
- 4 Set up the network connection
- 5 Manage Mi WiFi
- 6 Specifications
- 7 FAQ
- 8 Documents / Resources
 - 8.1 References



xiaomi M47 4C Mi Router



Specifications:

- **Brand:** Mi
- **Model:** Router 4C
- **Color:** Black
- **Wireless Standard:** 802.11 b/g/n
- **Ports:** WAN, LAN
- **Power Supply:** DC 5V/1A

Product Usage Instructions

Step 1: Connect the Cables

1. Connect the power adapter to the router and plug it into a power source.
2. Connect the WAN port of the router to your DSL/Cable/Satellite modem using an Ethernet cable.
3. If your Internet network is connected via a network cable from the wall socket, connect it directly to the router's WAN port.

Step 2: Set Up the Network Connection

1. Turn on WLAN and connect to the Wi-Fi network named Xiaomi_XXXX (no password required).
2. Wait for the system indicator light to turn blue, then search for the Wi-Fi network on your device and connect.
3. Open a browser and go to router.miwifi.com or 192.168.31.1 to complete the configuration.
4. Enter the account name and password provided by your broadband provider and follow the on-screen instructions.
5. Set a new Wi-Fi name and password, and wait for the indicator light to stabilize before reconnecting to the Wi-Fi network.

I have finished setting up my network. Why can't I connect to the Internet?

Solution:

1. Ensure that your router is powered on and working correctly.
2. Connect your device to the router's Wi-Fi network and access router.miwifi.com to troubleshoot based on the diagnostics results.

I've forgotten the administrator password for my router. What should I do?

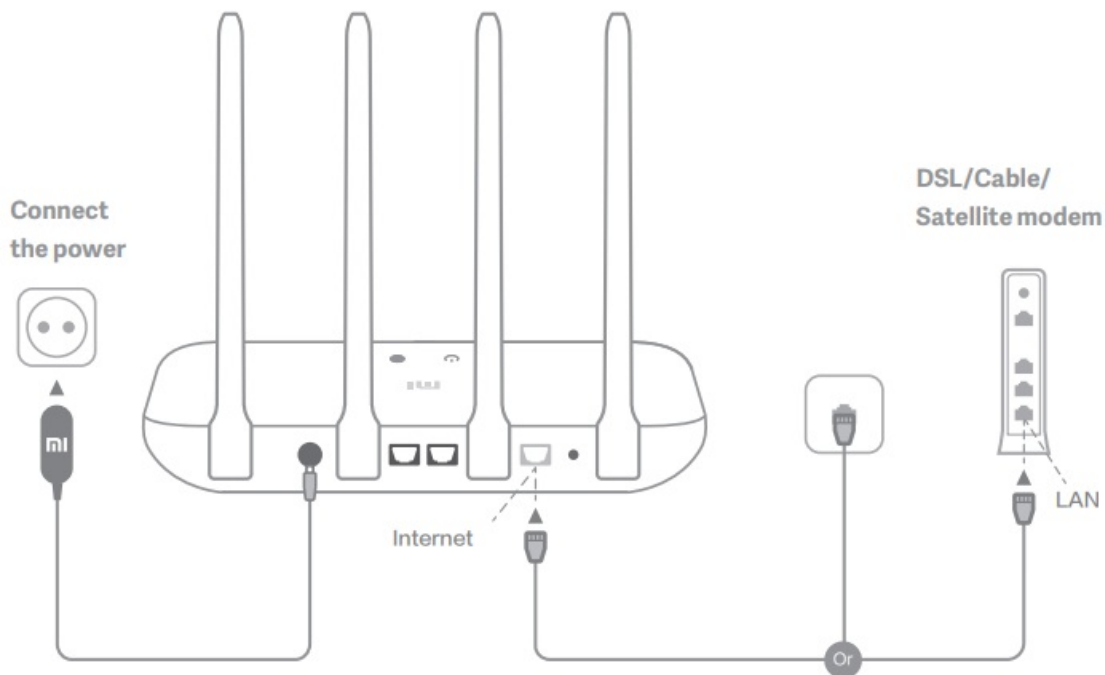
Solution: If you haven't set a specific password, try using your Wi-Fi password as the administrator password. If the issue persists, reset your router to factory settings and set up the network again.

How do I restore my router to the factory settings?

Solution:

1. Ensure the router is functioning properly.
2. Press and hold the Reset button at the base of the router for more than 5 seconds until the system status light turns orange.
3. Release the button and wait for the router to restart, indicating a successful reset.

Connect the cables



Power on the router, then connect the Internet (WAN) port to the DSL/Cable/satellite modem

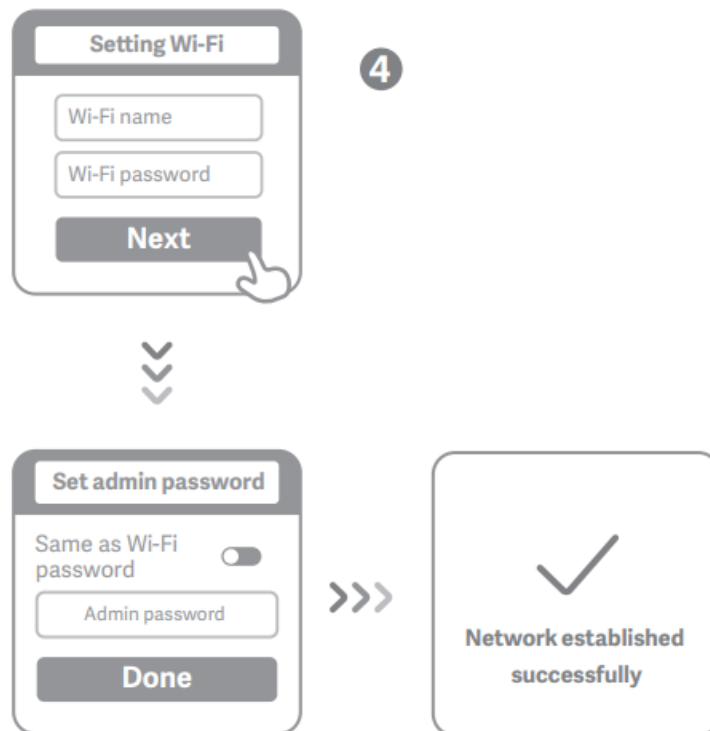
*If your Internet network is connected by a network cable via the Internet wall socket, connect the cable directly to the router's WAN port

Set up the network connection

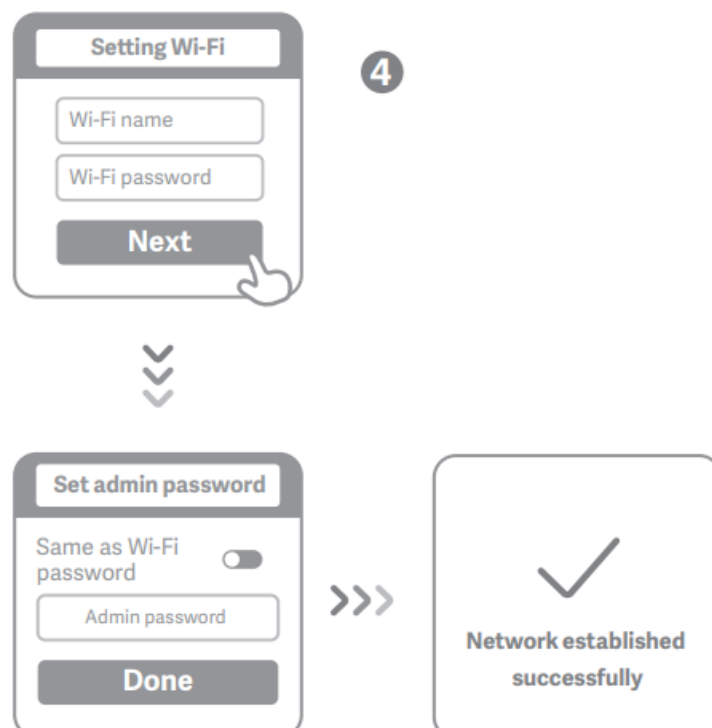
1. Connect to the Wi-Fi using a phone or computer(no password). Refer to the information on the bottom of the router for the Wi-Fi name

Wait until the system indicator light  turns blue. Search for the Wi-Fi network and connect

2. Once the Wi-Fi is connected, you will be directed to the configuration page. If the configuration page is not present, open the browser and go to “router.miwifi.com” or “192.168.31.1” to complete the configuration
Mi Router EULA is available at – <http://www1.miwifi.com/router/eula/20191230.html>
3. Enter the account name and password provided by your broadband provider, then click/tap Next (It depends on the Internet Service Provider you selected, whether your account name and password are required or not)
If you have forgotten your broadband account name or password, please contact your broadband provider



4. Set a new Wi-Fi and administrator password. You can choose to use your Wi-Fi password as your administrator password as well
Please wait until the indicator light turns blue and stops flashing, then reconnect to the Wi-Fi



Manage Mi WiFi

The web management website is router.miwifi.com and supports basic Internet functions. Scan the QR code, download the Mi WiFi app, and manage your router anytime, anywhere.



QoS



Unauthorized access prevention



Wi-Fi optimization



More features

Specifications

- Name: Mi Router 4C
- Model: R4CM
- Operating Temperature: 0~40°C
- Input: 5V,1A
- Operating Frequency: 2400MHz~2483.5MHz (≤20dBm)

Certifications:

Hereby, Xiaomi Communications Co., Ltd declares that the radio equipment type R4CM is in compliance with Directive 2014/53/EU. The full text of the EU Declaration of conformity is available at the following internet address: <http://www.mi.com/global/service/support/declaration.html>

All products bearing this symbol are waste electrical and electronic equipment (WEEE as in directive 2012/19/EU) which should not be mixed with unsorted household waste. Instead, you should protect human health and the environment by handing over your waste equipment to a designated collection point for the recycling of waste electrical and electronic equipment, appointed by the government or local authorities. Correct disposal and recycling will help prevent potential negative consequences to the environment and human health. Please contact the installer or local authorities for more information about the location as well as terms and conditions of such collection points.

Caution:

The product can be used within all European Union countries (BE/FR/DE/IT/LU/NL/DK/IE/GB/GR/PT/ES/AT/FI/SE/CY/CZ/EE/HU/LV/LT/MT/PL/SK/SI/BG/RO/HR).

To comply with CE RF exposure requirements, the device must be installed and operated 20cm (8 inches) or more between the product and all person's body. The adapter shall be installed near the equipment and shall be easily accessible. Use only power supplies listed in the user manual / user instructions.

- **Power Adapter Model:** RD0501000-C55-123OGD
- **Manufactured by:** Shenzhen Ruide Electronic Industrial Co., Ltd.
- **Manufactured by:** Xiaomi Communications Co., Ltd #019, 9th Floor, Building 6, 33 Xi'erqi Middle Road, Haidian District, Beijing, China, 100085

FAQ

I have finished setting up my network. Why can't I connect to the Internet?

1. **Step 1:** Use your phone to search for the Wi-Fi network set by your router. If you can't find it, make sure that the router is connected to the power and starts working normally
2. **Step 2:** Connect your phone to your router's Wi-Fi network, go to router.miwifi.com, and try to fix the problem based on the network diagnostics results

I've forgotten the administrator password for my router. What should I do?

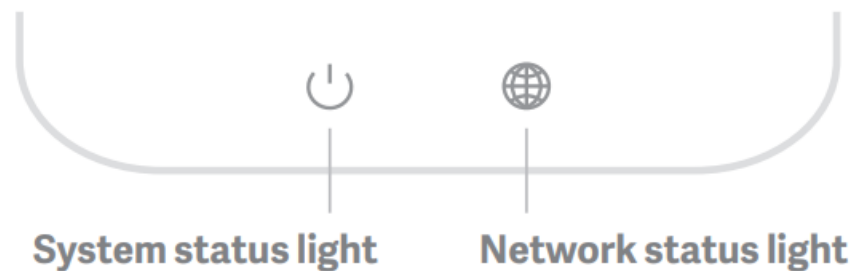
If you haven't set a specific password, your administrator password will be the same as your Wi-Fi password, so try using this to log in. If the problem persists, it is recommended that you restore your router to the factory settings, then set up the network again

How do I restore my router to the factory settings?

First make sure that the router starts working normally, then hold down the Reset button at the base of the router for more than 5 seconds and let go when the system status light turns orange. When the router finishes restarting, the reset was successful


What do the different indicator lights mean on the router?

There should be two indicator lights on the front panel, which are the network status light (blue light) and the system status light (three colors: blue, orange, and purple)



Light	Status	Explanation
Network Status Light		
Off	Nothing is plugged into the external Internet port or there is a problem with the connection.	
On	Network connection normal.	
Flashing	Sending or receiving data.	
System Status Light		
Off	Switched off or not connected to the power.	
Orange (Flashing)	System updating.	
Orange (On, not flashing)	System booting up.	
Blue (On, not flashing)	Functioning normally.	
Purple (Flashing)	Safe mode.	
Purple (On, not flashing)	System failure.	

Documents / Resources

	xiaomi M47 4C Mi Router [pdf] User Manual M47 4C Mi Router, M47, 4C Mi Router, Mi Router, Router
---	---

References

- [MiWiFi –](#)
- [Mi Router](#)
- [User Manual](#)

[Manuals+](#), [Privacy Policy](#)

This website is an independent publication and is neither affiliated with nor endorsed by any of the trademark owners. The "Bluetooth®" word mark and logos are registered trademarks owned by Bluetooth SIG, Inc. The "Wi-Fi®" word mark and logos are registered trademarks owned by the Wi-Fi Alliance. Any use of these marks on this website does not imply any affiliation with or endorsement.