

# xiaomi Hutt W66 Automatic Window Robot Cleaner User Manual

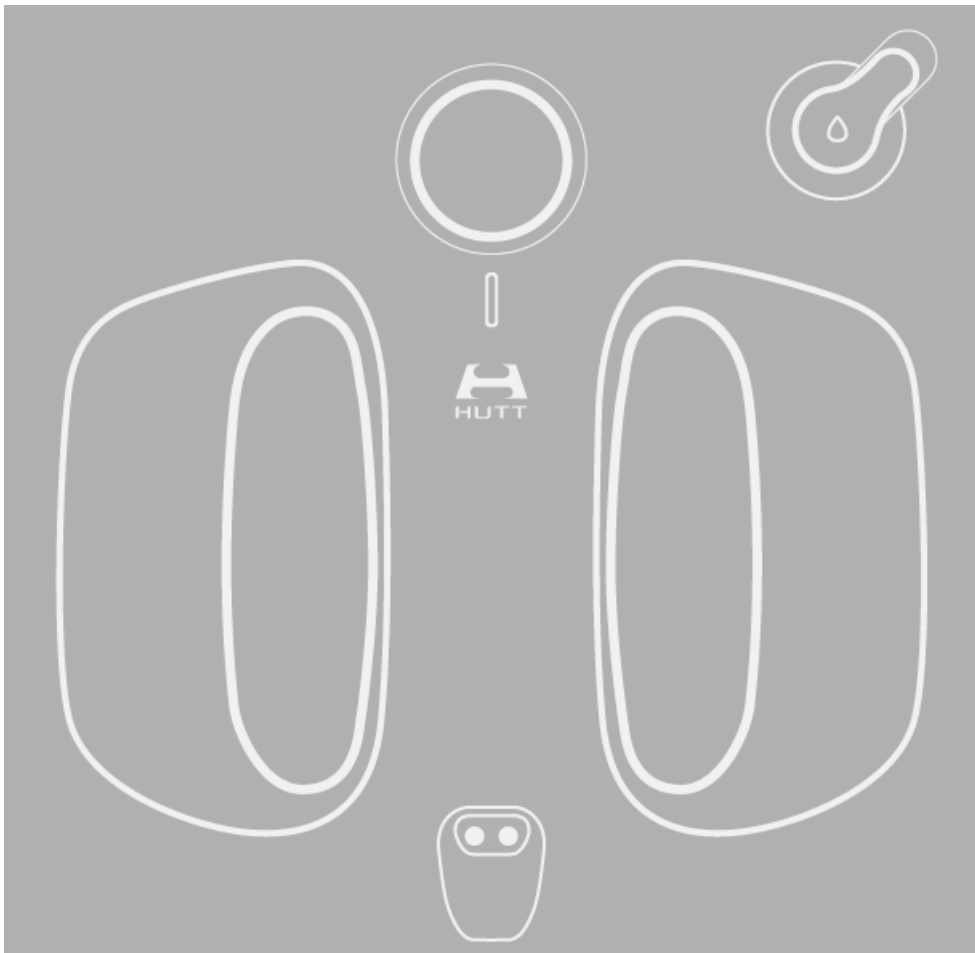
[Home](#) » [Xiaomi](#) » xiaomi Hutt W66 Automatic Window Robot Cleaner User Manual

## Contents [ [hide](#) ]

- 1 xiaomi Hutt W66 Automatic Window Robot Cleaner
- 2 Product Profile
- 3 Accessories List
- 4 Installation instructions
- 5 Instructions & precautions
- 6 FAQs
- 7 Start up
- 8 Remove the machine
- 9 Path planning instructions
- 10 Indicators/sound & their meanings
- 11 Remote control instructions
- 12 Basic parameters
- 13 Troubleshooting
- 14 Safety issues
- 15 Battery and Charging
- 16 Documents / Resources
- 17 Related Posts



**xiaomi Hutt W66 Automatic Window Robot Cleaner**



**Product Profile**

**Press briefly:**

- Start dry wipe
- Pause/continue

**Press & hold:**

- Release the suction and remove the machine

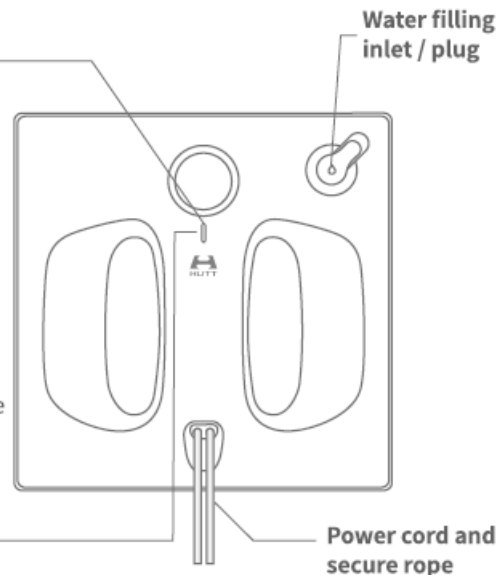
**Press & hold**

**(standby status):**

- Start the track auto-rotation
- Wipe the dirt off the track surface

**Status indicator:**

- The blue light- works normally
- Red light- check the list of LEDs for meaning

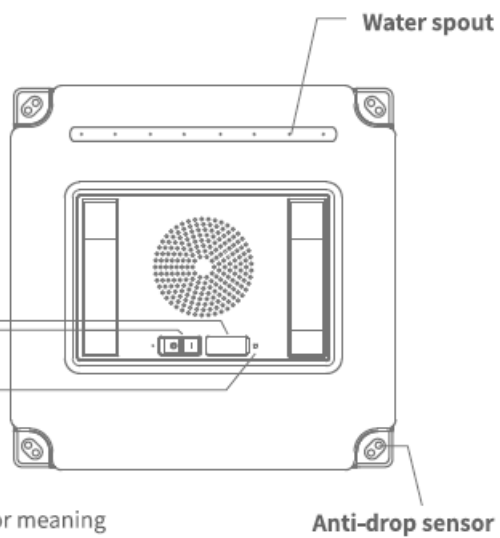


**USB port for update**

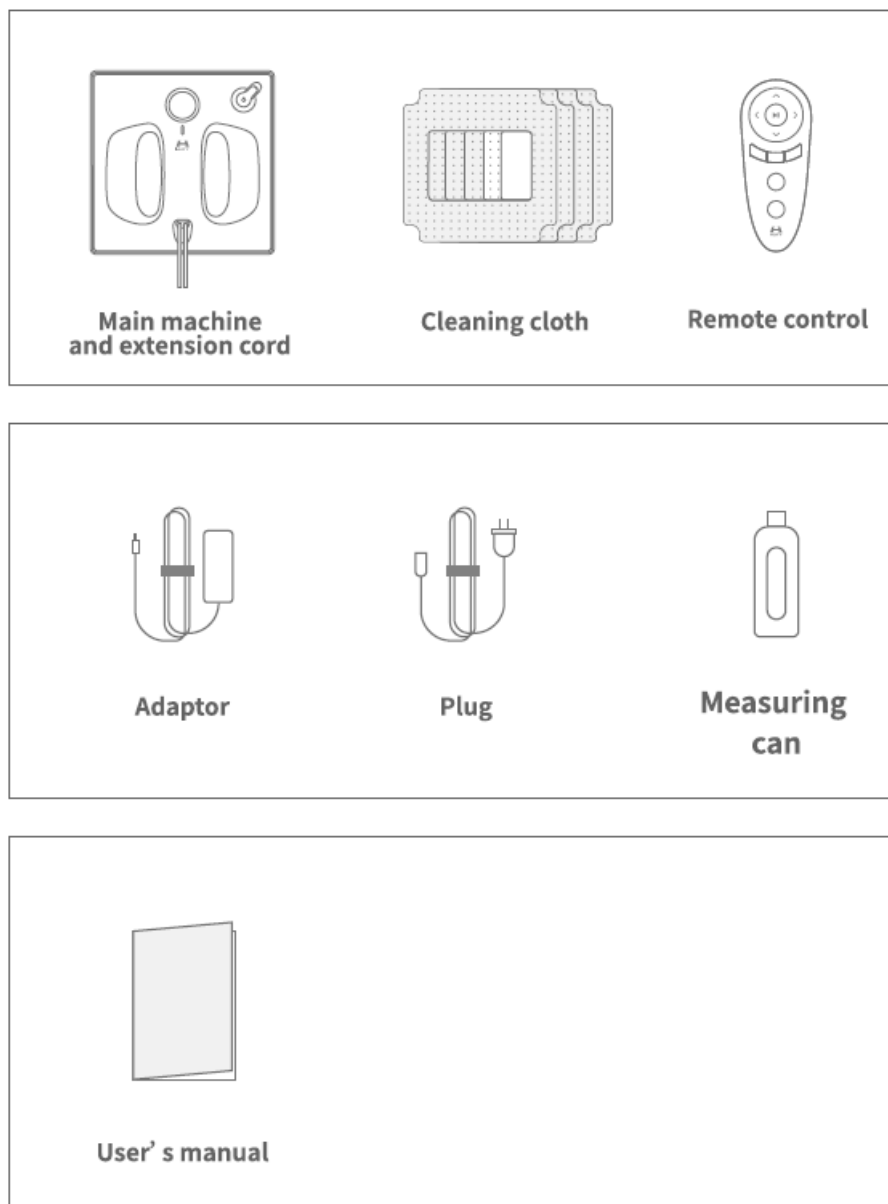
**Power switch**

**Status indicator:**

- The blue light- works normally
- Red light- check the list of LEDs for meaning



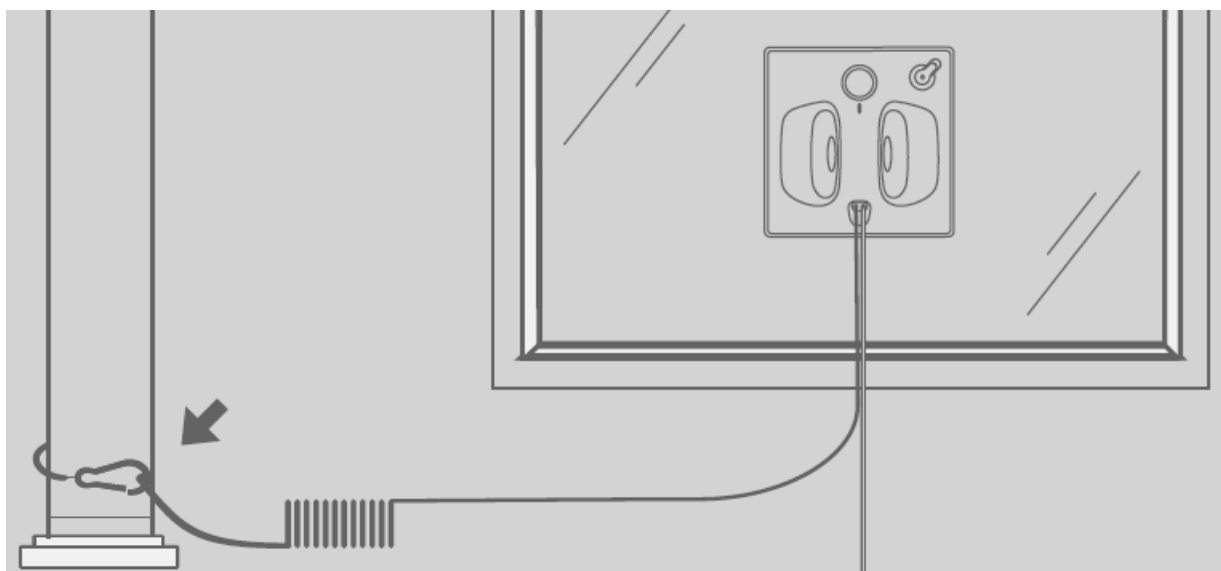
## Accessories List



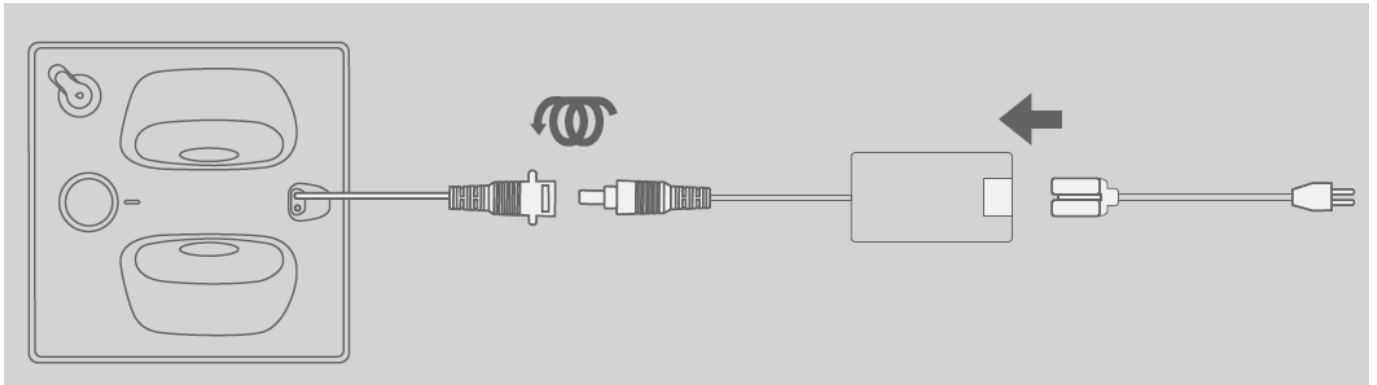
## Installation instructions

### **Attach firmly the buckle of the secure rope to solid object.**

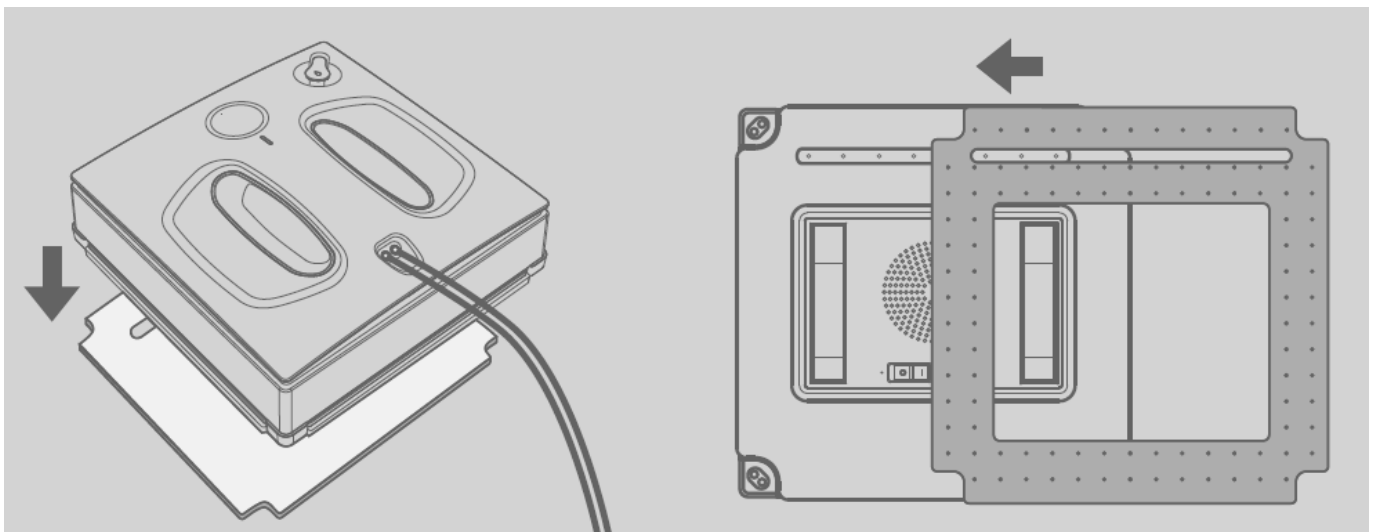
When using, it is recommended to fix the locking ring on a solid object that can not be dragged, with an appropriate length to allow the machine to work.



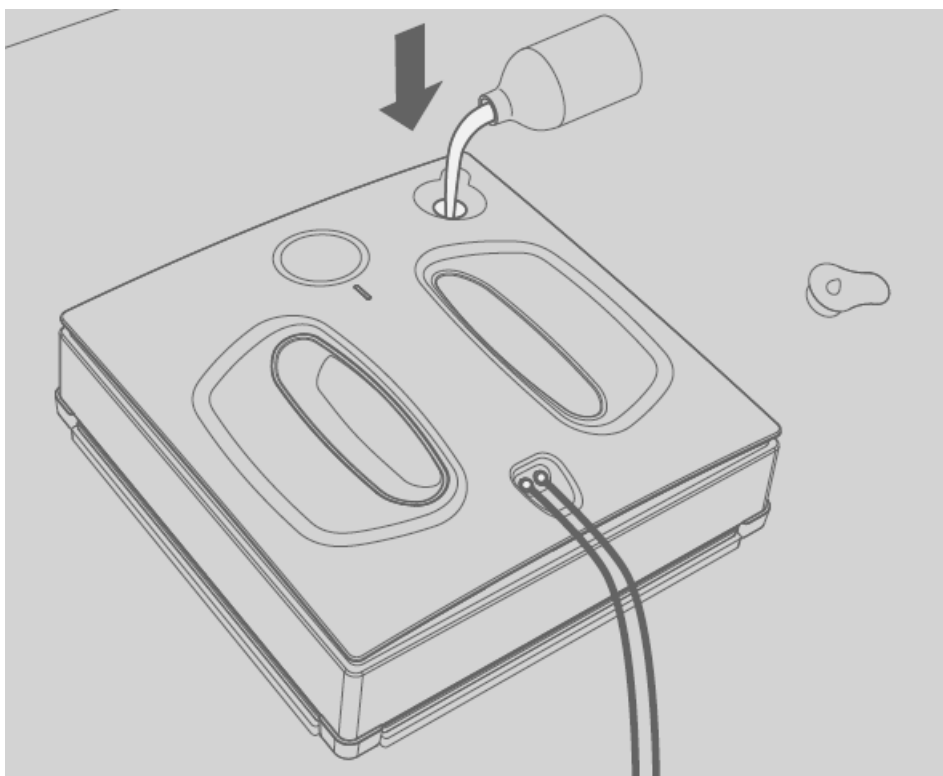
Lock the knob of the extension cable with the cable of the adapter properly. Connect the plug to the adapter, and then connect the socket to the power supply.



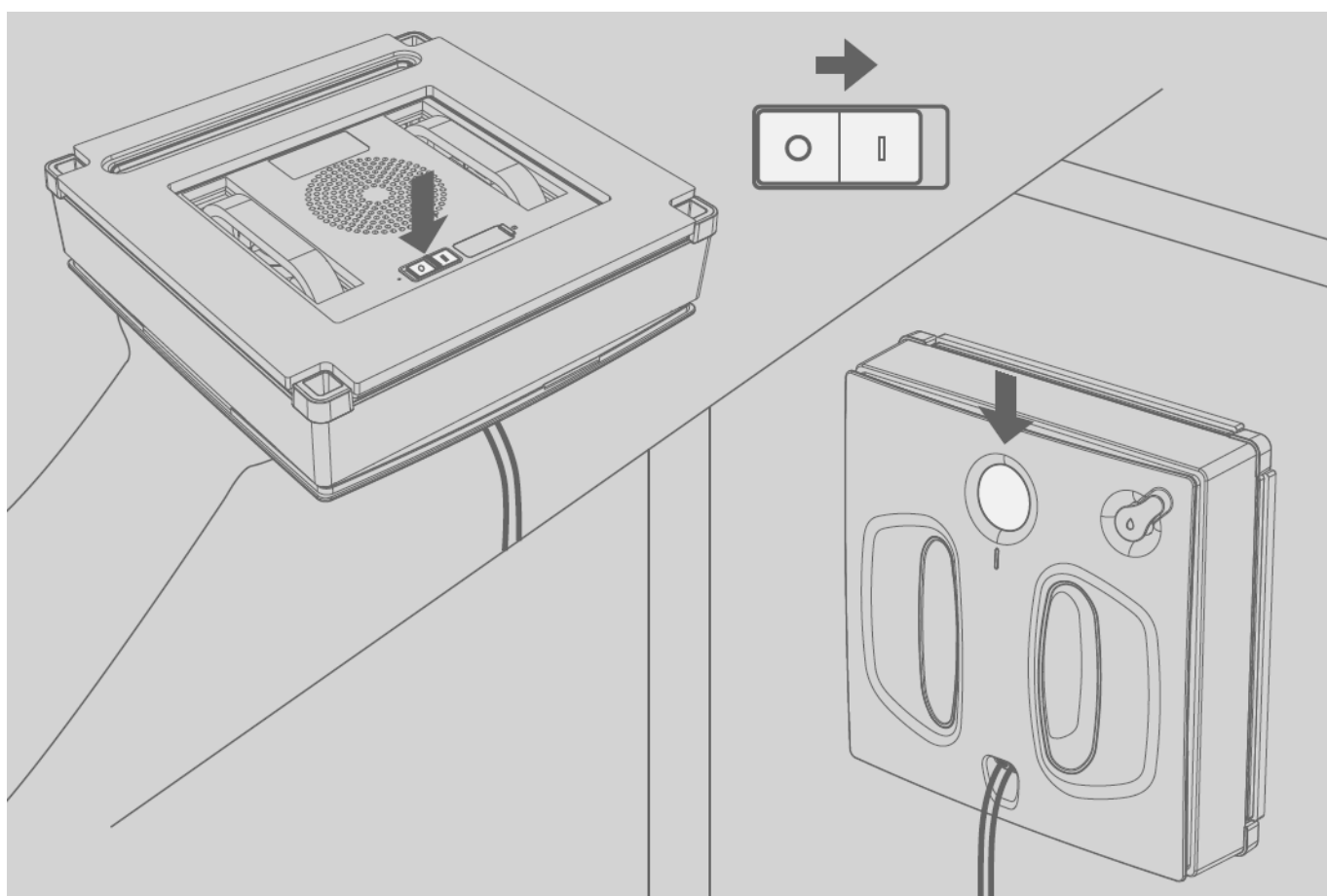
Fit the white surface of the cloth with the machine and keep it flat to avoid air leakage. Please use the original cloth, otherwise the machine performance will be affected.



Unplug the measuring can, fill it with water or glass water, pour it into the water tank, and put back the water tank plug. The liquid filled into the water tank must be non-corrosive and clean. The electrical conductivity of the liquid is needed for judging whether the liquid in the water tank is used up.



Turn on the bottom switch; attach the machine to the pane, then press the round Start button and the machine starts to dry wipe. When placing the machine, avoid being too close to the window frame. After wiping is finished, hold the secure rope with one hand and press the start button with the other hand. When the wind decreases, take down the machine and turn off the bottom switch.



## Instructions & precautions

## **Machine and working environment inspection**

1. CD Check whether the- secure rope is damaged. If there is no damage, please fix the secure rope and check whether it is attached to a solid object that will not move or deform. Check whether the pane is damaged or cracked. Do not use it in rainy days or when the pane is wet and foggy.
2. Please use it with window frame that is at least 6 mm wide. Confirm that the size of the window is greater than 40 \* 60cm (height), and check for any abnormality of the environment such as ultra-narrow frame, beveled frame, beveled pane, no frame or uneven, convex, leakage and gap of pane glue, where it is not recommended to operate, or need to be used under watch by someone to prevent it from d rapping (not common).
3. Please use it on the vertical pane, and use it carefully on the inclined pane and should watched by someone. If necessary, use the remote control to control it.
4. The machine might be stationary at some edges to test the resistance and move again after a few seconds, which is normal.
5. In case of accidental power failure, the internal battery will maintain the machine suction for at least 20 minutes and gives an alarm. Please remove it or restore the power supply as soon as possible.
6. If external operation at height is required, safety warning signs must be set on the ground beneath to prevent accidental personal injury.

## **FAQS**

### **How to achieve a better cleaning experience?**

1. CD Use dry cleaning cloth.
2. If the pane is dirty, it is recommended to dry wipe by pressing the round button for the initial time, or press Q;+ on the remote control for dry wiping automatically. The purpose is to wipe the hard and fine dust off the pane surface. After wiping, please replace with a new cloth or shake the particles off the surface before use to avoid the pane being scratched by hard particles (not common).
3. After wiping dirty pane, use the track cleaning function. Hold the machine in your hand and press and hold the circular button. The track will rotate slowly. Wipe the dirt off the track with a wet paper towel to avoid leaving track marks when wet wiping later.
4. Replace the cloth for a second round with a wet wipe, which can be done automatically by a,,; use of the wet wipe button,t1Con the remote control, or press the water spray button
5. dry wipe is started,. The robot voice “wet wipe mode” or “water spray on” indicates that the wet wipe function has been turned on.
6. Pay attention and avoid the cloth being too wet. Use the wet cloth after dried. Please use the original cloth, otherwise the machine performance will be affected.

### **How to use the cloth immediately after cleaning?**

(if the cloth is too wet, it will skid seriously. Please use it with care.) It is not recommended to use a fully wet cloth for cleaning, which will cause the machine to skid and increase the probability of falling. Please ensure that no accidental injury will be caused. Be sure to follow the steps below while using it:

1. Soak the cloth in clean water and brush off the dirt on its surface and squeeze off the excess water. In the

process of removing water, be careful to avoid defor

-mation of the cloth under stress, and use a drying blower until it is as dry as possible.

2. The cloth shall be flatly fit on the base without any gap, deformation and warping.
3. Use dry tissue paper to absorb the water in front or behind the walking wheel to ensure that the cleaning cloth in these areas around the two walking wheels is dry.
4. Do not turn on water spray when using dry wipe function, and do not use it on any frameless pane.
5. In case the machine starts to slide downward or gets stuck at the edge due to excessive moisture. Please observe whether the machine gradually returns to normal. If not, please repeat the steps of using tissue paper to absorb the water from the cloth to help the machine resume normal operation.

## **Start up**

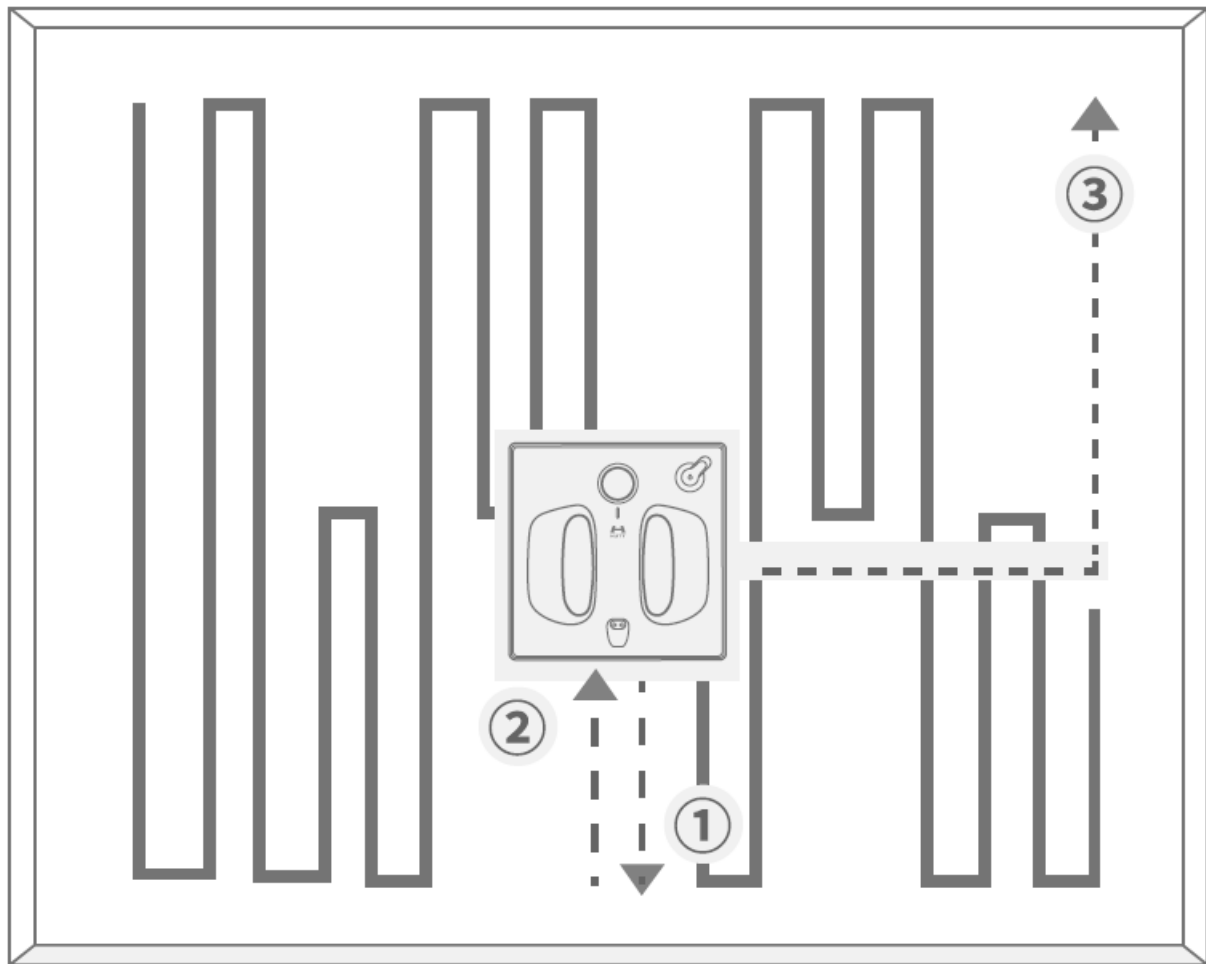
1. CD Make sure the power cord and the plug are connected.
2. Turn on the power switch at the bottom and make sure that the fan rotates and place the machine far enough away from the window frame.
3. Make sure the machine is attached to the pane before releasing it.
4. Press the start button and the machine starts to move.

## **Remove the machine**

1. CD When it is still running, hold the secure rope with one hand and the machine with the other. Press the round button to reduce the suction and remove the machine.
2. If you can't reach the machine with your hand and there is no remote control, please pull the secure rope in a direction flat against the surface , and slowly pull the machine back to the position that can be reached by hand, and then remove the machine.
3. Turn off the bottom power switch after the machine is removed.

## **Path planning instructions**





### Clean Path One Time

Put the machine in the middle of the pane to start. After exploring the pane boundary from the current position down and left, the machine will move to the upper right corner and start wiping following an N-shaped path from top to bottom. At each turn, it “advances first, then goes backward” by following the principle of avoiding skipping by secondary overlapping. When cleaning is completed, it will return to the original point automatically.

### The path of cleaning twice

After the N-pattern wiping from top to bottom, the secondary Z-shaped wiping from left to right will then automatically starts before returning to the original point after cleaning.

### Issues worth of paying attention to:

If the machine encounters an irregular frame, the data error will be caused during the edge detection, which will lead to a small error when returning to the original position, but it will not affect the normal use.

### Indicators/sound & their meanings

## Indicators/sound & their meanings

### Status indicator:

Blue:-normal running

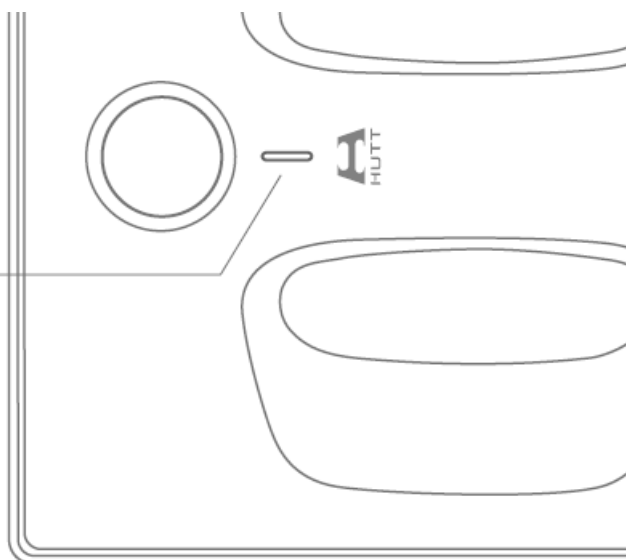
Red: constantly

→Power not properly connected

→Air leakage

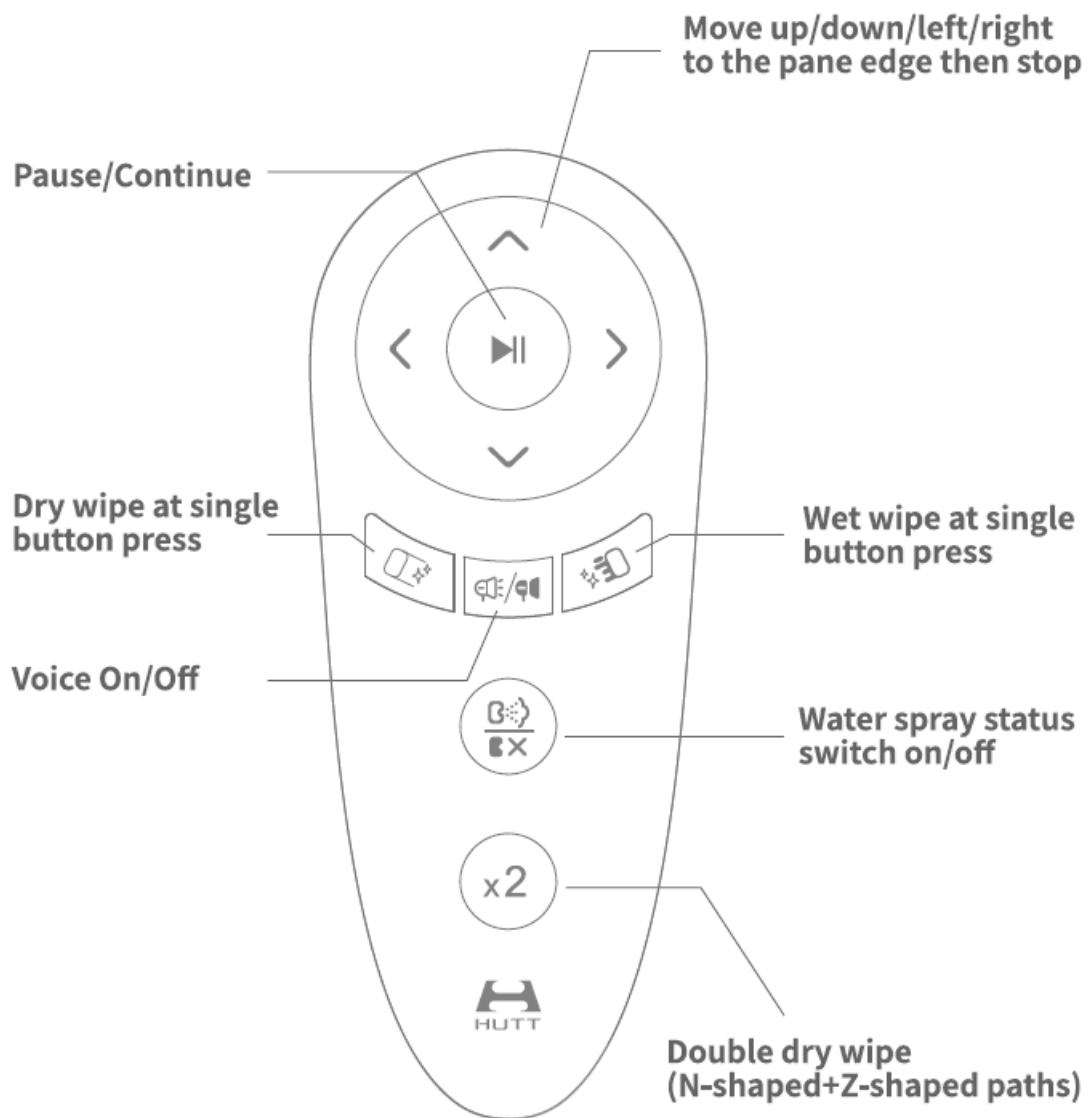
Red:blinking

→refer to the table below



LED	Voice	Solution
Constantly red	Please connect the adaptor	Check the plug, ensure normality of adaptor ports. Start after 20min charging.
	Air pressure too low	Check if the cloth side is reverse or not flat, any protrusion on the pane; any air leak due to cursive pane.
Constantly red	N/A	If running normal, it has been automatically adjusted. If repeated, re-place or change the cloth.
Red/blue lit alternatively	The wheels are stuck; The wheel is abnormal; Please check the wheel	Check whether the wheel is tuck by something.
	Too little friction on the glass	Clean the water or oil stains on the wheel. Clean the water or oil stains on the pane or the contact area; check if any foreign matters such as stickers on the pane
	Too much friction on the glass	Clean the contamination on the wheel. Check if it is too moist due to rainy day, causing too big resistance.
	The gyroscope is abnormal; The Barometer is abnormal; The fan motor is abnormal; The wireless module is abnormal; Detection module is abnormal; Please restart the device	Unplug the adaptor and restart the machine to see if it restores back to normal. Contact the customer service.
	Running against the edge without further move	Check the resistance parameter. If free of abnormality, wait patiently.

## Remote control instructions



## Basic parameters

- Model No: W66
- Rated voltage: 24V
- Rated power: 90W
- Noise Decibel: 65db
- Size: 231.5\*231.5\*76mm
- Charge current: 300mA
- Battery capacity for power cut protection: 650mAh
- Power failure protection suction-maintaining time: At least 20min(depending on the power availability of the built-in battery)
- Variable frequency suction range: 2000~2600Pa
- Water tank ca pa city: 150ml
- Cleaning speed: Dry wipe:150mm/s Wet wipe:70mm/s
- Minimal area for use: 400\*600mm

## Troubleshooting

1. The machine is skidding when working, please check if the cloth is too wet and clean the track surface.
2. When the machine is standing at the edge, it is detecting the normality of the resistance. Please wait patiently.
3. The status indicator is blinking red with sound prompt. Please check: Whether the power cord plug is loose or damaged, leading to power failure or poor contact. Whether the pane or cloth is too wet and causes low friction. Excessive friction of the cleaning cloth caused by sticky matters on the pane Whether the cleaning cloth is installed in place without air leakage Whether the machine surface is uneven, causing air leakage Whether the suction inlet is blocked
4. The red and blue status indicators are blinking alternately with vocal alert, which means that the machine needs manual assistance.  
Please check the list of “LED indicators and voice meanings” for solution.
5. Please replace the clean cloth if the machine is not running smoothly.
6. If the machine has completed the whole pane cleaning but does not stop its movement automatically. Please take down the machine directly.

## **Safety issues**

### **Requirements:**

- Be sure to check whether the safety rope is damaged, and use the safety rope to fix the machine for use.  
Warning shall be set on the ground for aerial work.
- This product should not be drenched with water.
- Do not use it on cracked and damaged glass.
- When cleaning the outer surface of the machine, the machine must be shut down to avoid danger during the movement of the machine.
- Do not let your fingers or any body parts close to the rotation and opening of this product.
- Please use this product according to the instructions. Please contact customer service when the fault cannot be eliminated. Do not repair it without permission to avoid danger.
- It is only used for cleaning the household environment with 0°~40°

## **Battery and Charging**

- Do not use a third-party charger or disassemble and refit the main engine, battery and charger without permission.
- If the charger is damaged or broken, please do not continue to use it. Please contact customer service.
- Put the charger away from the heat source.
- If the product needs to be transported, it is recommended to use the original package for transportation and shut down the machine.
- If you do not use this product for a long time, please fully charge and turn off the machine and place it in a cool and dry place. Charge it at least once every 3 months to avoid battery failure caused by overdischarge of the battery.

## **Documents / Resources**



[xiaomi Hutt W66 Automatic Window Robot Cleaner](#) [pdf] User Manual

Hutt W66, Automatic Window Robot Cleaner, Hutt W66 Automatic Window Robot Cleaner, Window Robot Cleaner, Robot Cleaner