



xiaomi DVB4235GL Mi Wi-Fi Range Extender Pro Wifi Repeater, Network Expander, 2×2 External Antenna User Manual

[Home](#) » [Xiaomi](#) » xiaomi DVB4235GL Mi Wi-Fi Range Extender Pro Wifi Repeater, Network Expander, 2×2 External Antenna User Manual 

Contents

- [1 xiaomi DVB4235GL Mi Wi-Fi Range Extender Pro Wifi Repeater, Network Expander, 2×2 External Antenna](#)
- [2 Function introduction](#)
- [3 Add device](#)
- [4 Cloud storage service](#)
- [5 Device initialization](#)
- [6 Documents / Resources](#)
- [7 Related Posts](#)



xiaomi DVB4235GL Mi Wi-Fi Range Extender Pro Wifi Repeater, Network Expander, 2×2 External Antenna



Function introduction

Real-time preview

Login the mobile client to view the real-time monitoring images.

Replay

Replay the video in memory card or cloud storage by the mobile client. Cloud storage Video cloud is efficient and secure, and multiple packages are optional.

Humanoid intrusion detection

Detection personnel intrusion greatly reduces false alarm caused by non personnel movements.

Alarm push

Equipment detects the abnormal situations, sends alarm picture to mobile phone client.

Add device

AP quick configuration



...



...



Start the device

Start the device and the device voice prompt
"Access-Point established"

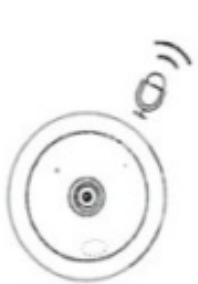
Add the device

Login the mobile client, click "Access-Point established" or "AP quick configuration", connect the device hotspot according to the interface step. Select the router WiFi that needs to be connected, and add the device.

Wireless network

When the device is configured, the camera is automatically connected to the router.

WiFi SmartLink configuration



...



...



Start the device

Device voice prompt
"Waiting for WiFi smartlink configuration"

Wireless network

Mobile phone connects router WiFi

Add the device

Login the mobile client, click "WiFi smartlink configuration", add the device according to the interface steps.

Download mobile phone client

Insert the memory card to the device. This product is not equipped with memory card, please buy it on your own. Please do not hot plug in the memory card.

Download APP

The mobile phone scans QR code to download the mobile client.



V380
(Official Version)



V380 Pro
(Beta Version)

Cloud storage service

Buy package

Click icon and select a package to buy: Support PayPal payment

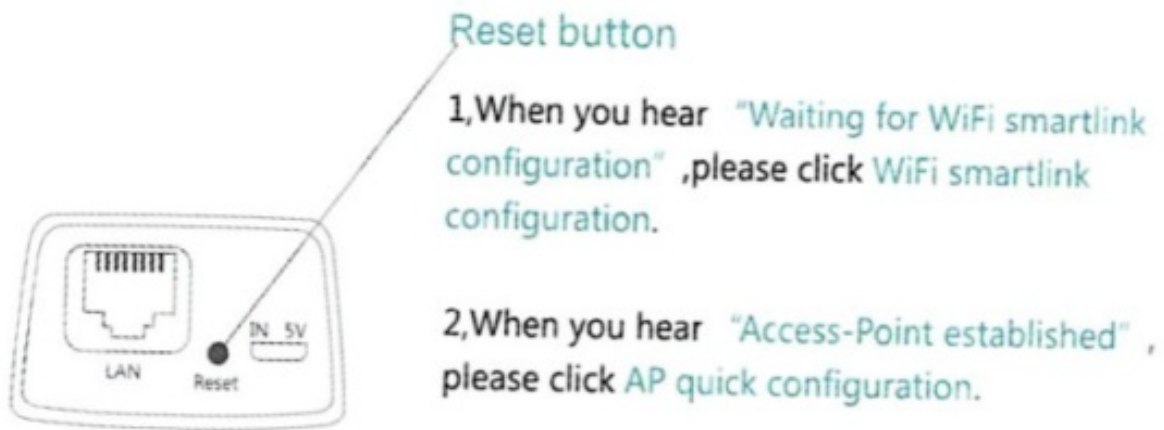
Binding service

After the completion of the cloud package payment, the APP popup whether to bind the package” and click “yes” to complete binding.



Device initialization

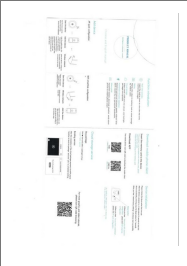
Please initialize the device when first time use. After the device is powered on, it takes about 15 seconds to start the device successfully, and long press the Reset button for 7 seconds When you hear “restore factory settings” ,the device reset successfully. ([Reset Instructions](#))



For more graphic and video tutorials, please scan QR code browsing.



Documents / Resources

	<p>xiaomi DVB4235GL Mi Wi-Fi Range Extender Pro Wifi Repeater, Network Expander, 2x2 External Antenna [pdf] User Manual</p> <p>DVB4235GL Mi Wi-Fi Range Extender Pro Wifi Repeater Network Expander 2x2 External Antenna, DVB4235GL, Mi Wi-Fi Range Extender Pro Wifi Repeater Network Expander 2x2 External Antenna</p>
---	--