



Xhorse SK304 Mini Prog Programmer User Manual

[Home](#) » [Xhorse](#) » Xhorse SK304 Mini Prog Programmer User Manual 

Contents

- [1 Xhorse SK304 Mini Prog Programmer](#)
- [2 Overview](#)
- [3 Main Functions](#)
- [4 Package List](#)
- [5 Appearance](#)
- [6 Quick Setting](#)
- [7 Maintenance](#)
- [8 FCC statements](#)
- [9 Documents / Resources](#)
- [10 Related Posts](#)



Xhorse SK304 Mini Prog Programmer



Overview

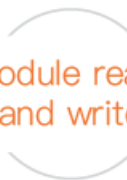
MINI PROG is a professional and stable, multifunction, intelligent flexible programming device for many different chips, support connection by smartphone, easy to use



Main Functions



EEPROM data read
and write



Module read
and write



Data edit



MCU data read
and write



Data Storage

Performance



Capacity
2550mAh



Normal Working Hour
>5H



Standby Time
>5D

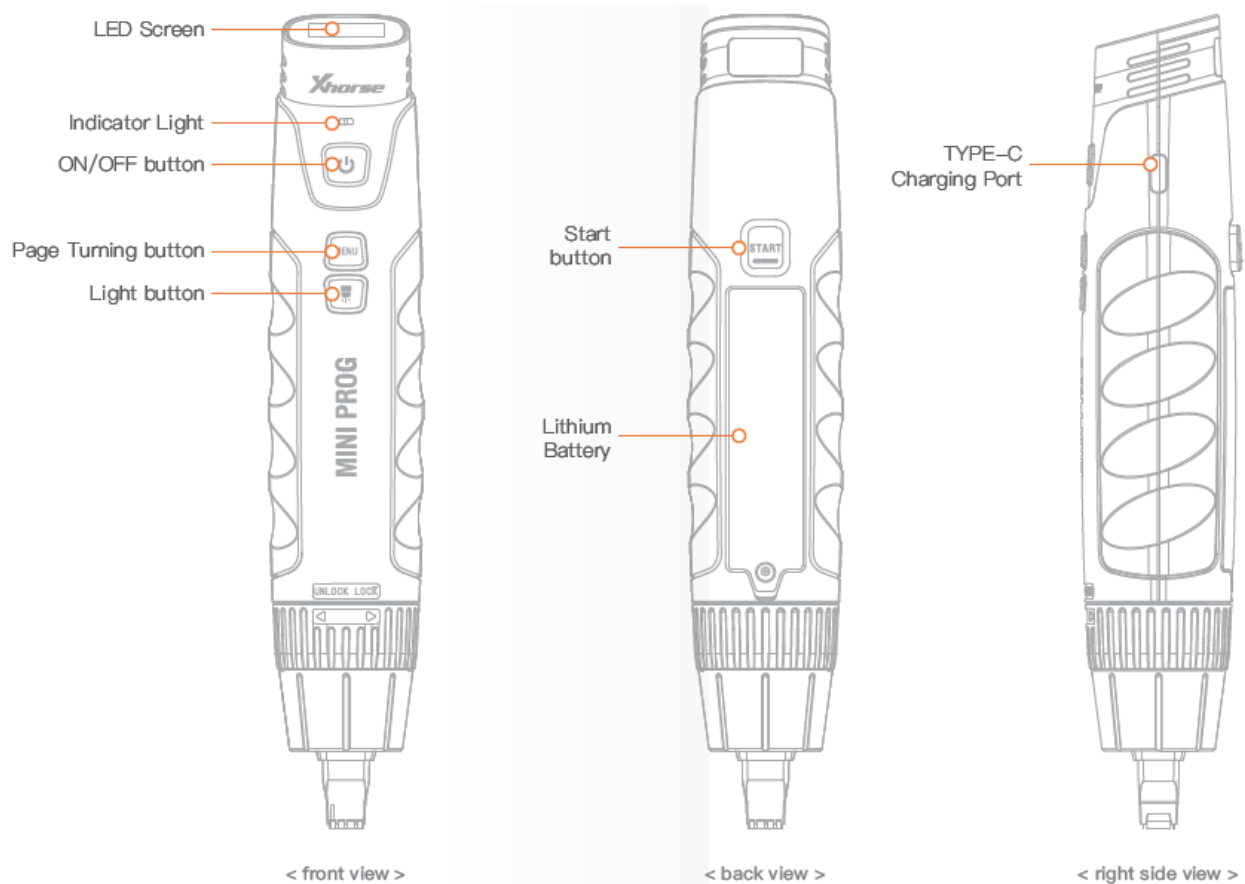


Recharging Current
1.5A

Package List

Type	Quantity
• MINI PROG	1
• Push-type SOP8 1# test connector	1
• Push SOP8 wide body 2# test connector	1
• Push SOP8 3# test connector	1
• DB15 cable	1
• EEPROM Adaptor	1
• USB convert TYPE-C cable	1
• Needle Set	1
• Instructions	1

Appearance



Quick Setting

Press the ON/OFF:

button to display the boot screen.



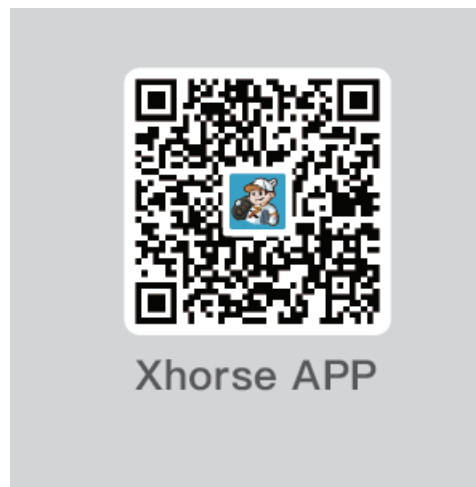
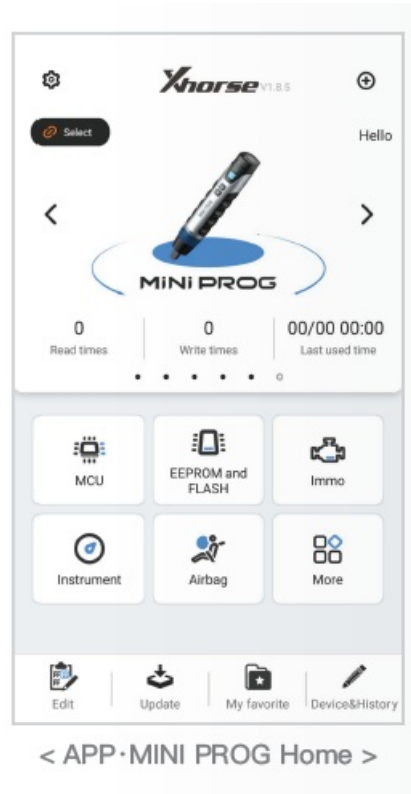
Power off:

Press and hold the ON/OFF button for 4 seconds, MINI PROG will be shut down.

Button explanation:

- ON/OFF button: Press the ON/OFF button for 1-2 seconds to turn on MINI PROG, press and hold for 4 seconds to turn off MINI PROG.
- Start button: When MINI PROG is on and preparation is ready press 'Start' to work.
- Page Turning button: When the screen cannot display all content, click on 'Page Turning' to view related information.

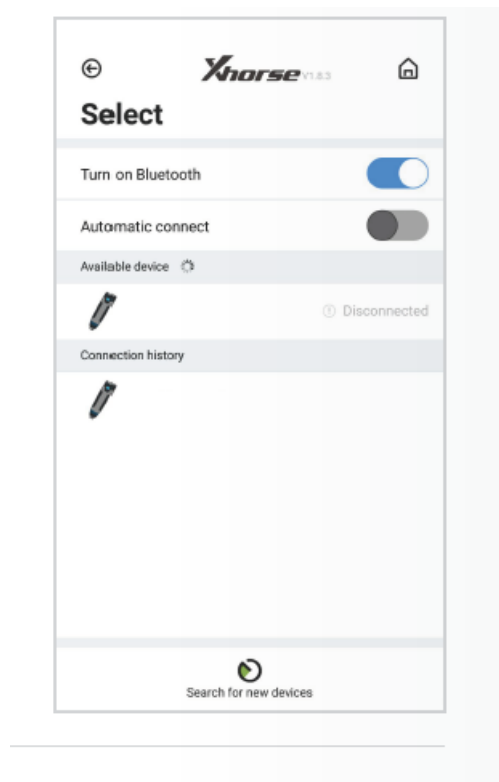
- Light button: After MINI PROG is connected to one of the test connectors 1, 2, and 3, if need light press the 'Light' button, the corresponding test connector light on, press again to turn it off.



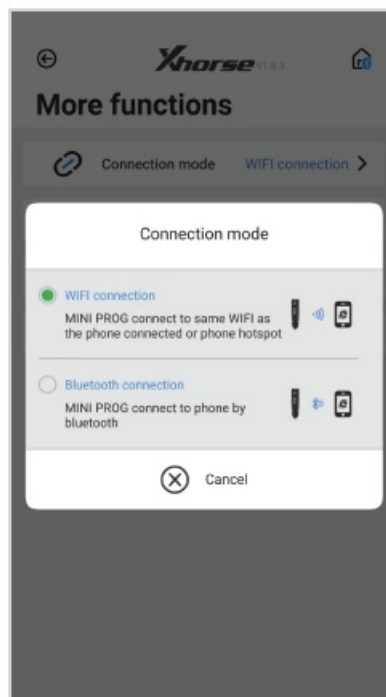
Connect to smartphone:

MINI PROG support connects to a smartphone by Bluetooth or WIFI.

- Click Connect to device from the HOME page, available device serial number will be shown, according to SN select the proper device to connect.



- There are 2 connection ways for user selection: Bluetooth or WIFI, according to the connection way, the device will be connected automatically.



Recharging:

Please use a 1.5A charger connect to the USB port for recharging MINI PROG. When charging in power-on status, the battery icon in device status information will be shown recharging status, the indicator light on. When charging in power-off status, the indicator light on; after the battery is fully charged, the device will be stopped charging automatically for protecting the battery.

Maintenance

- Do not hit it violently shake or throw it.
- Do not wash the main body and other parts with water or other liquid directly, and do not clean MINI PROG with a wet cloth.
- Do not place MINI PROG on high temperature, high humidity or dusty places.
- Do not take MINI PROG apart or retrofit it in private otherwise mainboard will be damaged or the battery will be on fire and etc.
- Please keep the screen, test connectors, and other main parts well and prevent sharp objects to do damage to them.

Warranty and after-sale instructions

MINI PROG has one year warranty, and it is based on the date on the transaction voucher; If do not have a transaction voucher or lost it, the factory date recorded by the manufacturer will prevail.

Situations on the below can not get free repairment:

- Damage caused by not following the use instructions.
- Damage caused by repairing or retrofitting in private.
- Damage caused by fall, crash or inappropriate voltage.
- Damage caused by inevitable force.
- Damage caused by using in a harsh environment or on the vehicle and ship for a long time;

Get main body dirty and worn due to use.

Please get in contact with dealer or scan the QR code behind the instruction, download Xhorse official APP to get after-sale and technical support.

All rights reserved. Any individual or organization is forbidden to copy or spread in any form from this manual without permission. Due to product improvements, the contents of this manual may change without notice.

FCC statements

This device complies with part 15 of the FCC rules. Operation is subject to the following two conditions:

1. this device may not cause harmful interference, and
2. this device must accept any interference received, including interference that may cause undesired operation.

NOTE: The manufacturer is not responsible for any radio or TV interference caused by unauthorized modifications or changes to this equipment. Such modifications or changes could void the user's authority to operate the equipment.




NOTE: This equipment has been tested and found to comply with the limits for a Class B digital device, pursuant to part 15 of the FCC Rules. These limits are designed to provide reasonable protection against harmful interference in a residential installation. This equipment generates uses and can radiate radio frequency energy and, if not installed and used in accordance with the instructions, may cause harmful interference to radio communications. However, there is no guarantee that interference will not occur in a particular installation. If this equipment does cause harmful interference to radio or television reception, which can be determined by turning the equipment off and on, the user is encouraged to try to correct the interference by one or more of the following measures:

- Reorient or relocate the receiving antenna.
- Increase the separation between the equipment and receiver.
- Connect the equipment into an outlet on a circuit different from that to which the receiver is connected.
- Consult the dealer or an experienced radio/TV technician for help.

The device has been evaluated to meet general RF exposure requirements, The device can be used in portable exposure conditions without restriction Federal Communication Commission (FCC) Radiation Exposure Statement Power is so low that no RF exposure calculation is needed.

FCC ID:2AI4T-XDPPR

Documents / Resources

	Xhorse SK304 Mini Prog Programmer [pdf] User Manual XDPPR0, 2AI4T-XDPPR0, 2AI4TXDPPR0, SK304 Mini Prog Programmer, SK304, Mini Prog Programmer
---	---