



XGP Motorcycle Intercom Quick Button Command User Guide

[Home](#) » [XGP](#) » XGP Motorcycle Intercom Quick Button Command User Guide 

Contents

- [1 XGP Motorcycle Intercom Quick Button Command](#)
- [2 Product Information](#)
- [3 Product Usage Instructions:](#)
- [4 MUSIC FUNCTION](#)
- [5 BASIC FUNCTION](#)
- [6 PHONE CALL](#)
- [7 MUSIC FUNCTION](#)
- [8 BLUETOOTH INTERCOM FUNCTION](#)
- [9 UNIVERSAL PAIRING](#)
- [10 FCC Statement](#)
- [11 Documents / Resources](#)
- [12 Related Posts](#)

XGP

XGP Motorcycle Intercom Quick Button Command



Product Information

This device is designed to comply with part 15 of the FCC Rules, ensuring its safe and efficient operation. It is built with the following features:

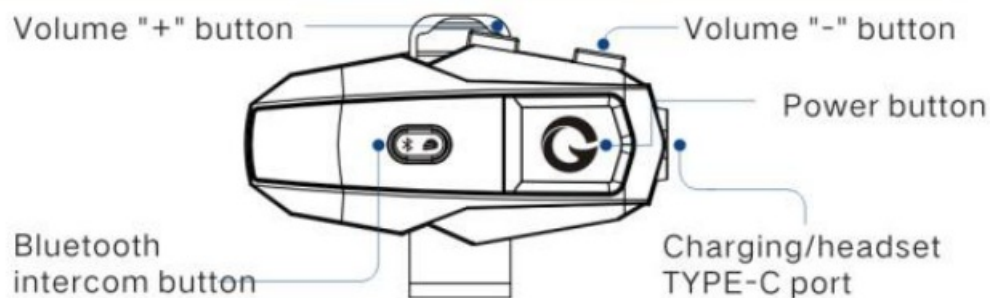
- Compliance with FCC regulations: The device meets the requirements set forth by the Federal Communications Commission (FCC) in part 15.
- Interference prevention: The device is designed to minimize harmful interference and ensure reliable performance.
- Interference acceptance: The device is capable of accepting any interference that may be encountered during operation.

Product Usage Instructions:

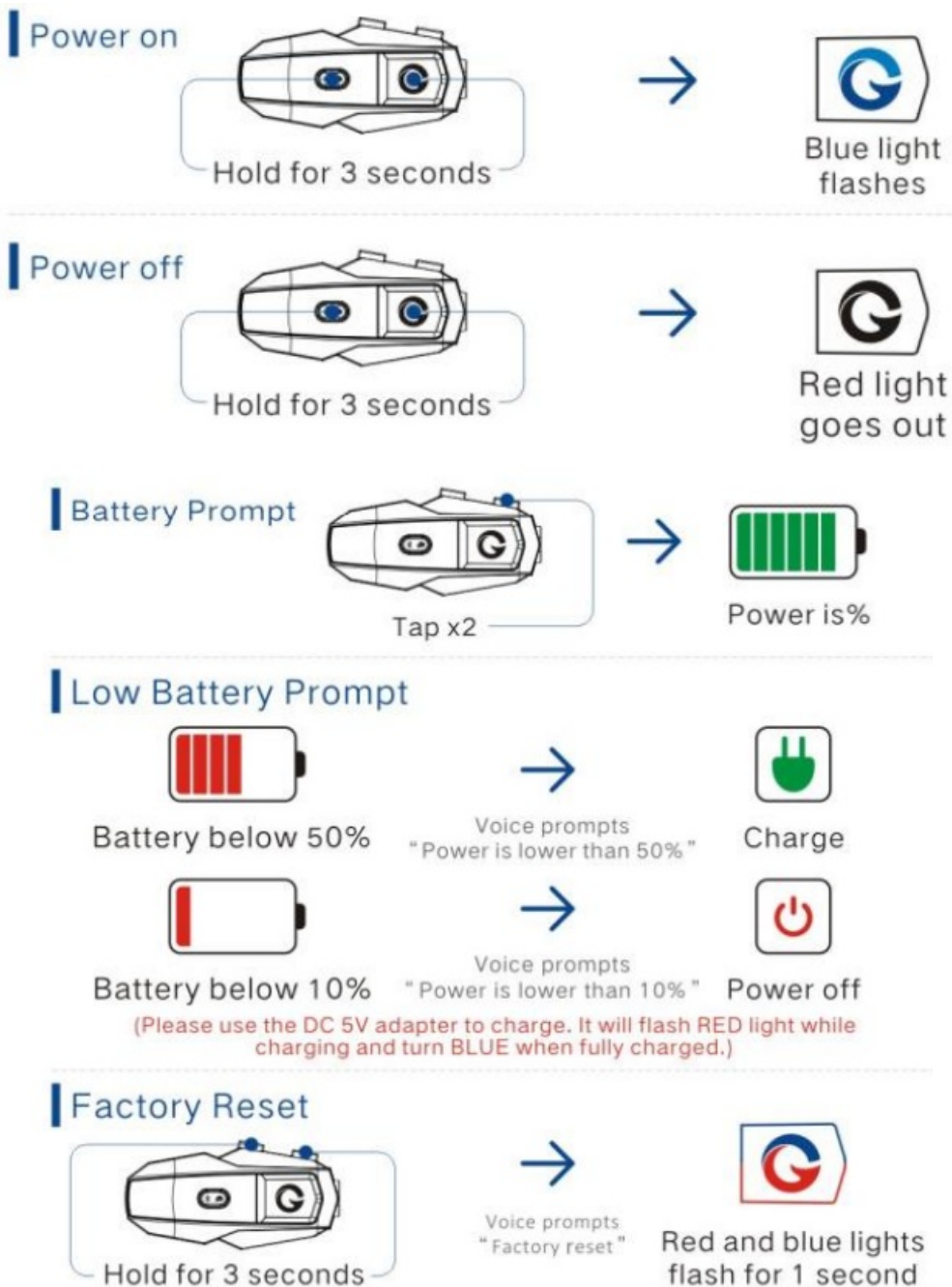
To use this device effectively and in compliance with FCC regulations, please follow these instructions:

1. Place the device in a suitable location: Ensure that the device is positioned in an area where it is not likely to cause interference to other devices or be affected by external interference.
2. Power on the device: Connect the device to a power source according to the provided instructions.
3. Check for interference: Once the device is powered on, monitor for any signs of interference, such as disruptions in performance or unusual behavior.
4. Minimize interference sources: If interference is detected, try to identify and eliminate possible sources of interference, such as nearby electronic devices or wireless signals.
5. Ensure proper connections: Make sure all cables and connections are securely attached and properly installed.
6. Contact support if needed: If you experience persistent interference issues or have any questions regarding the device's compliance, please contact our customer support for assistance.

MUSIC FUNCTION



BASIC FUNCTION



(After factory reset, power off and restart the device. The power button will flash red and blue alternately. At this point, you can directly connect the device to your phone via Bluetooth without entering pairing mode again; For intercom only need to hold the Intercom button till red and blue right flash on either unit to start a talk.)

PHONE CALL

Connect Phone (Power on Status)



(The XGP unit can simultaneously connect to two phones or two Bluetooth devices)

Answer call



End call



Reject call



Enable Auto-answering call



Disable Auto-answering call



Activate Voice Call (Siri/Google Assistant)

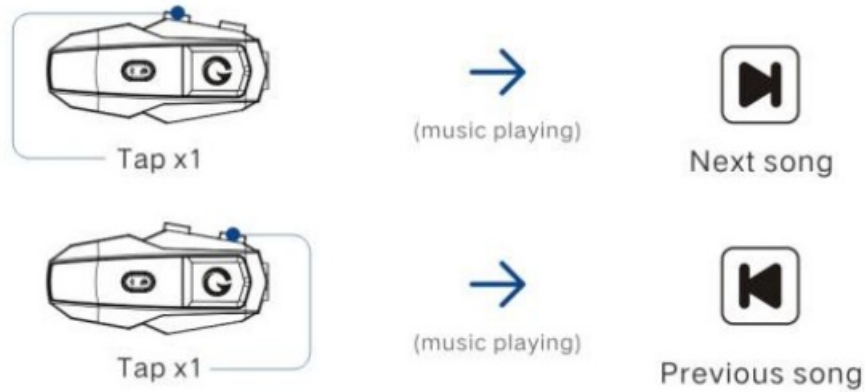


MUSIC FUNCTION

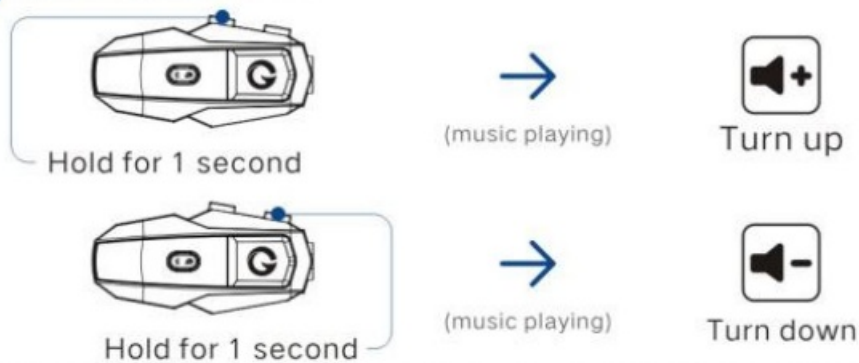
Music Play/Pause



Music Switch



Volume modulation



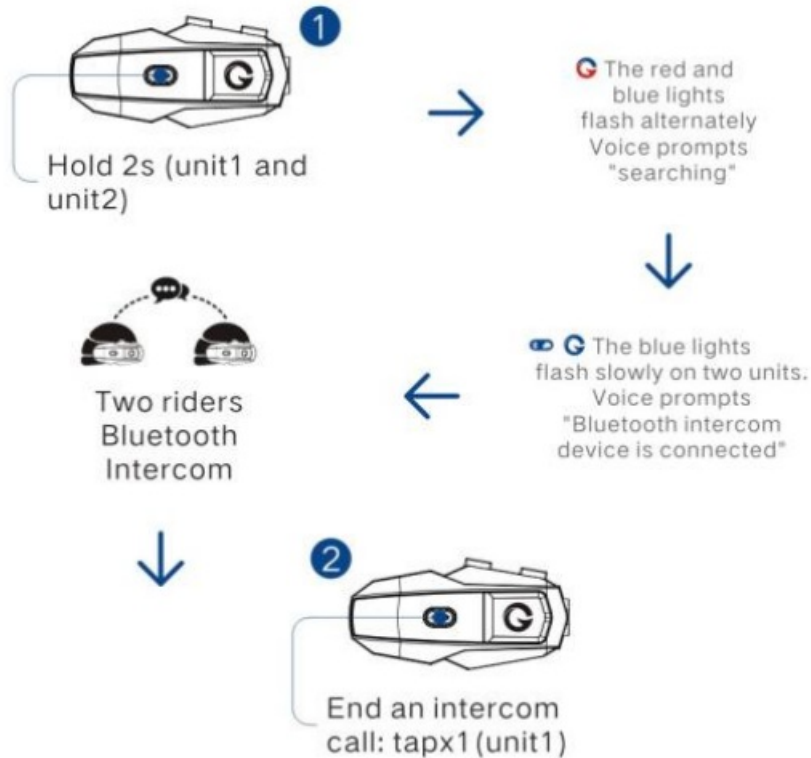
Music sharing



(Please make sure two units are paired before then two riders can share music)

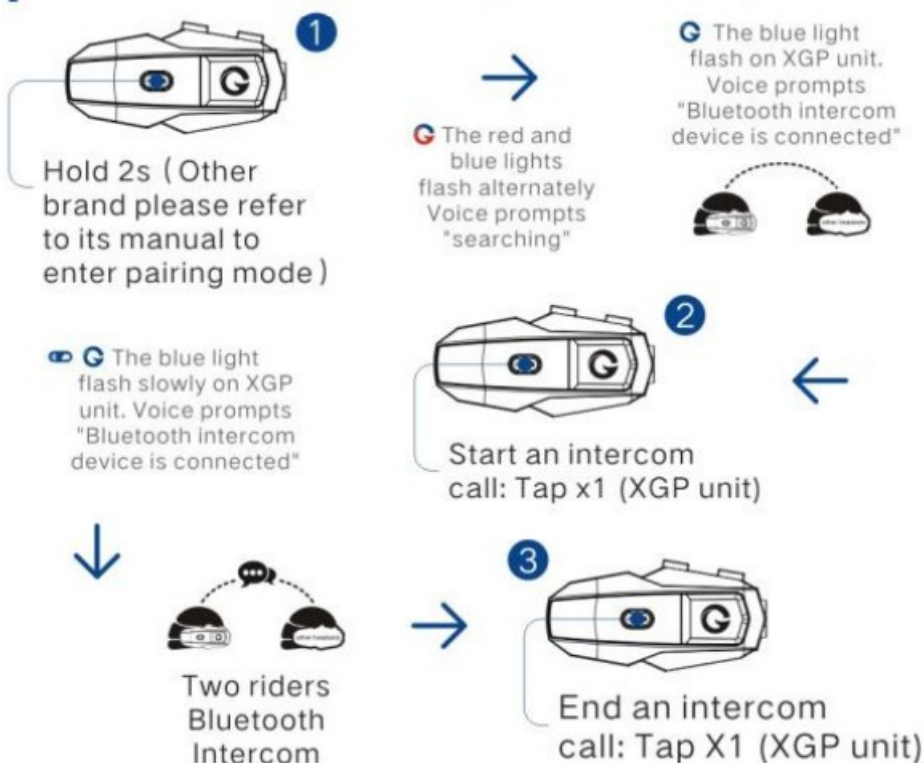
BLUETOOTH INTERCOM FUNCTION

Two units Bluetooth Intercom (Power on Status)



UNIVERSAL PAIRING

Two units Bluetooth Intercom (Power on Status)



FCC Statement

This equipment has been tested and found to comply with the limits for a Class B digital device, pursuant to Part 15 of the FCC Rules. These limits are designed to provide reasonable protection against harmful interference in a residential installation. This equipment generates uses and can radiate radio frequency energy and, if not installed and used in accordance with the instructions, may cause harmful interference to radio communications. However,

there is no guarantee that interference will not occur in a particular installation. If this equipment does cause harmful interference to radio or television reception, which can be determined by turning the equipment off and on, the user is encouraged to try to correct the interference by one or more of the following measures:

- Reorient or relocate the receiving antenna.
- Increase the separation between the equipment and receiver.
- Connect the equipment into an outlet on a circuit different from that to which the receiver is connected.
- Consult the dealer or an experienced radio/TV technician for help

This device complies with part 15 of the FCC Rules. Operation is subject to the following two conditions:

1. This device may not cause harmful interference,
 2. This device must accept any interference received, including interference that may cause undesired operation.
- Changes or modifications not expressly approved by the party responsible for compliance could void the user's authority to operate the equipment.


The device has been evaluated to meet general RF exposure requirements. The device can be used in portable exposure condition without restriction

This device complies with Industry Canada licence-exempt RSS standard(s). Operation is subject to the following two conditions:

1. This device may not cause interference,
2. This device must accept any interference, including interference that may cause undesired operation of the device

Email: XGPTX2023@163.com

Documents / Resources

	<p>XGP Motorcycle Intercom Quick Button Command [pdf] User Guide 2BCEK-XGP, 2BCEKXGP, Motorcycle Intercom Quick Button Command, Quick Button Command</p>
---	--