



xfinity X1ONEWN Comcast Launches First Global Streaming Device User Manual

[Home](#) » [Xfinity](#) » xfinity X1ONEWN Comcast Launches First Global Streaming Device User Manual 

Contents

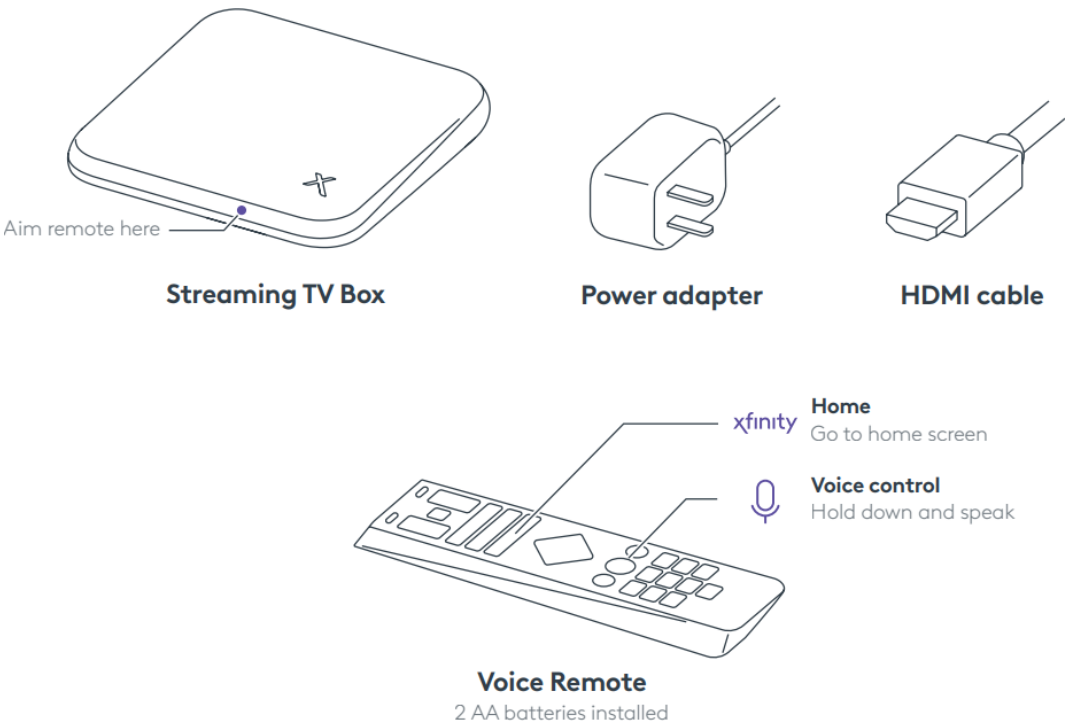
- [1 xfinity X1ONEWN Comcast Launches First Global Streaming Device](#)
- [2 WHAT IN BOX](#)
- [3 INSTALLATION](#)
- [4 Documents / Resources](#)
- [5 Related Posts](#)

xfinity

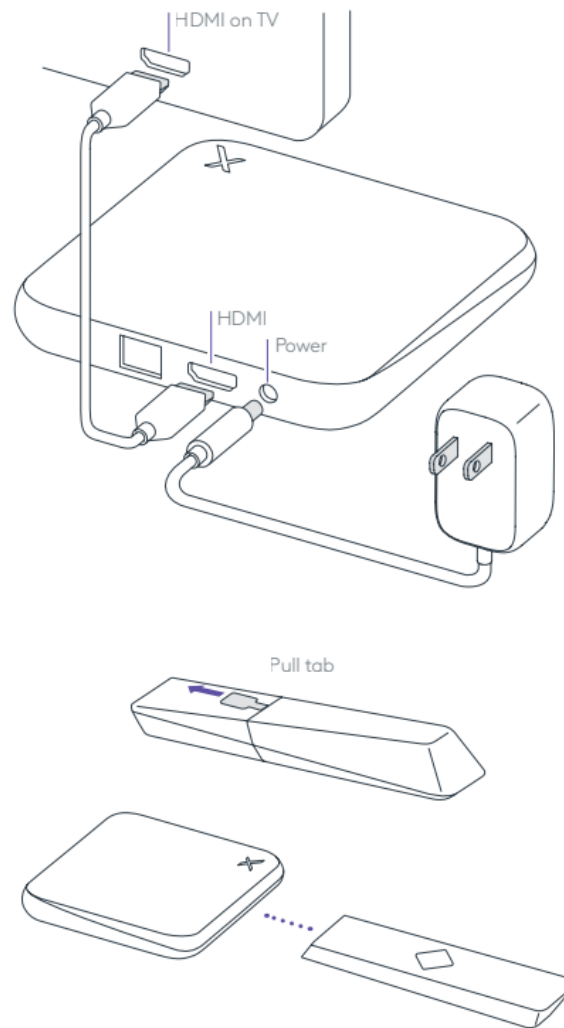
xfinity X1ONEWN Comcast Launches First Global Streaming Device



WHAT IN BOX




INSTALLATION



- Before you begin, be sure your Wireless gateway is powered on, activated, and within range of your Streaming TV Box. You can also use an Ethernet cable (not included) to set up a wired connection instead. Please remove the protective clear film from your devices. If you have a PrimaryTV Box, be sure that's also powered on and activated.
- Secure the HDMI cable between your TV and the Streaming TV Box. Turn on your TV and select the HDMI Input.
- Plug the power adapter into an electrical outlet and connect the other end to the Power port on the Box. Once the power indicator lights up, you're ready to go. Only use the supplied power adapter. Avoid outlets controlled by dimmers.
- Remove the tab from the back of the remote.
- Aim the remote directly toward the front of the Box and follow the onscreen instructions. Make sure the line of sight between the remote and the Box is not blocked during setup.

Documents / Resources

 <p>Get started</p> <p>xfinity</p>	<p>xfinity XIONEWN Comcast Launches First Global Streaming Device [pdf] User Manual XIONEWN, NKR-XIONEWN, NKRXIONEWN, XIONEWN Comcast Launches First Global Streaming Device, Comcast Launches First Global Streaming Device, Launches First Global Streaming Device, Streaming Device</p>
---	--

