

xerox
C9000 High Capacity
Tandem Tray Option



xerox C9000 High Capacity Tandem Tray Option Installation Guide

[Home](#) » [Xerox](#) » xerox C9000 High Capacity Tandem Tray Option Installation Guide 

Contents

- [1 xerox C9000 High Capacity Tandem Tray Option](#)
- [2 Product Information](#)
- [3 Product Usage Instructions](#)
- [4 Frequently Asked Questions \(FAQ\)](#)
- [5 INSTALLATION INSTRUCTION](#)
- [6 Documents / Resources](#)
 - [6.1 References](#)
- [7 Related Posts](#)



xerox C9000 High Capacity Tandem Tray Option



Product Information

Specifications:

- **Model Number:** 607E21370 Rev C
- **Weight:** 33.8 kg (74.5 lb.)
- **Support:** www.xerox.com/support

Product Usage Instructions

Setting Up:

1. Unbox the product carefully to avoid damage.
2. Place the product on a flat, stable surface.
3. Connect the necessary cables and power source.

Operation:

1. Power on the product using the designated power button.
2. Follow the on-screen instructions for initial setup.
3. Load the appropriate materials or media for operation.

Maintenance:

1. Regularly clean the product to ensure optimal performance.
2. Refer to the user manual for troubleshooting tips.
3. Keep the product in a dust-free environment.

Frequently Asked Questions (FAQ)

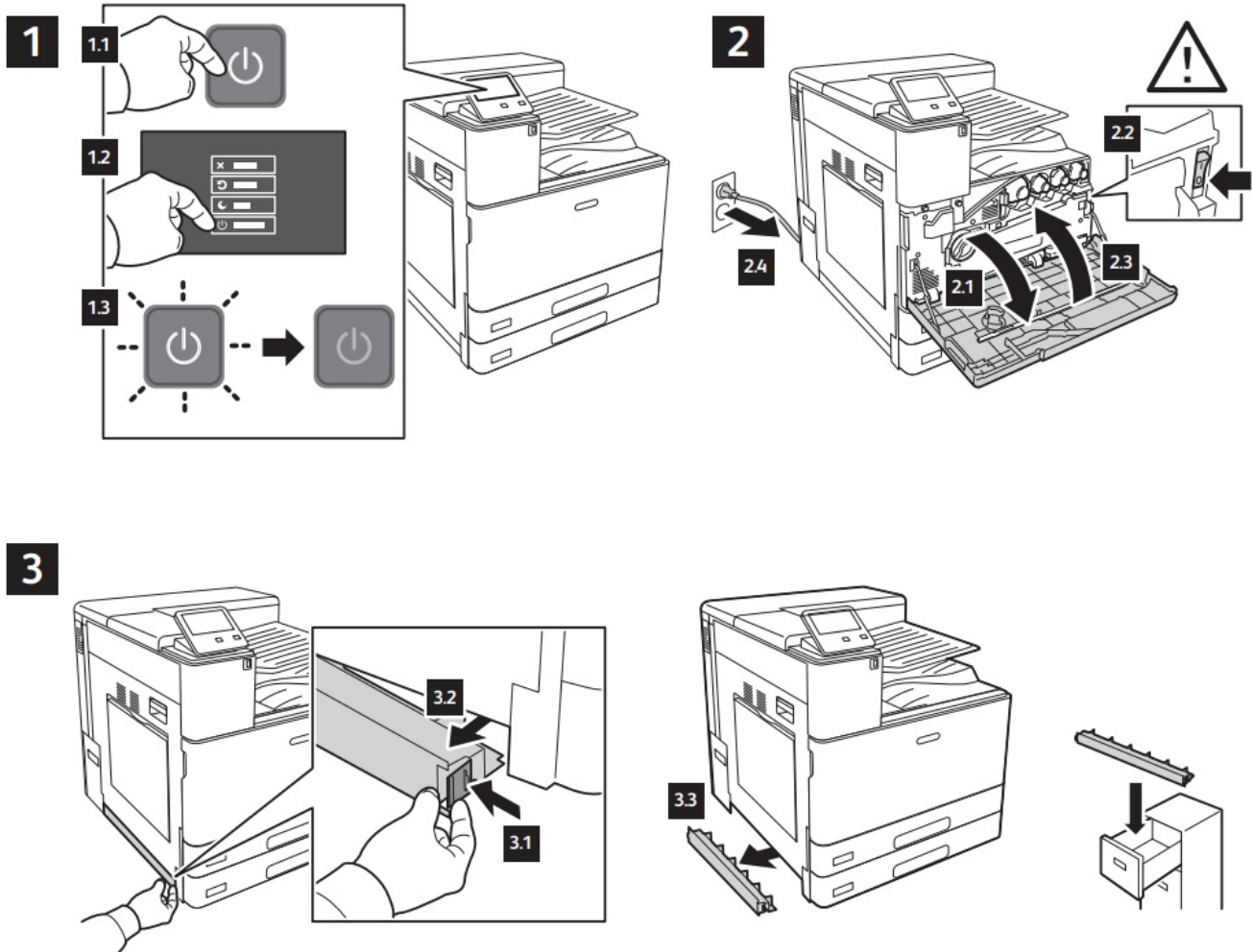
- **How do I troubleshoot printing issues?**

Check the ink or toner levels, ensure paper is loaded correctly, and restart the printer. If issues persist, refer to the user manual for further guidance.

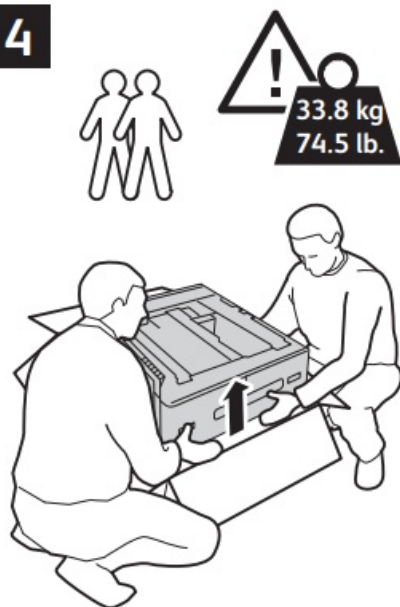
- **Can I use third-party ink cartridges with this product?**

It is recommended to use genuine manufacturer ink cartridges to maintain product performance and warranty validity.

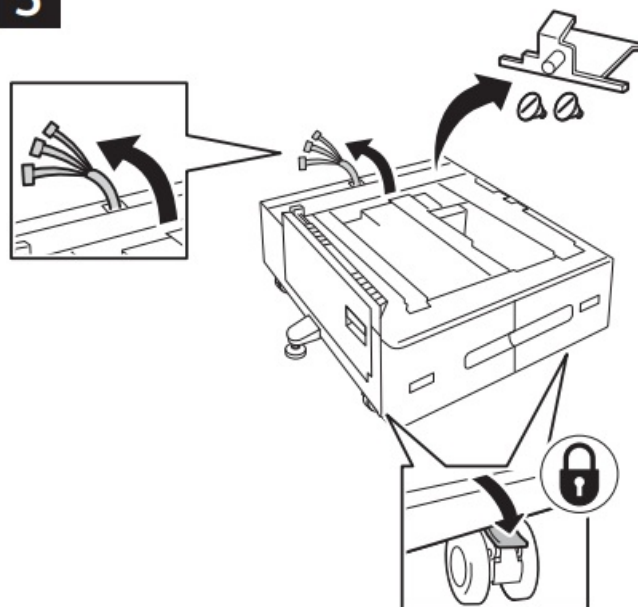
INSTALLATION INSTRUCTION



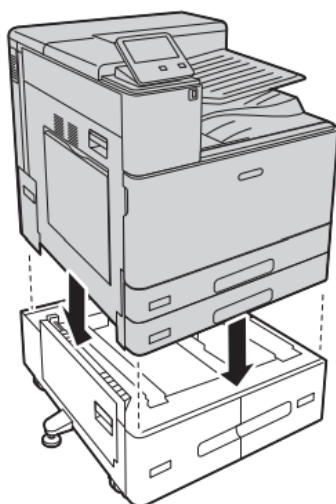
4



5



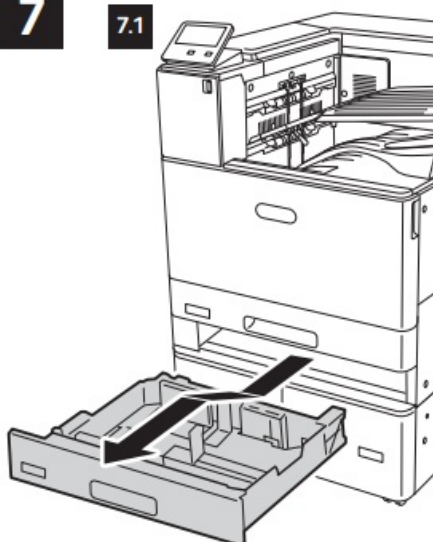
6



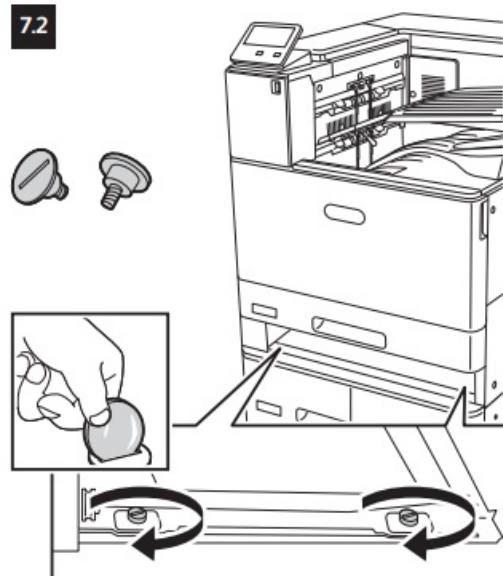
- EN** Professional Installation Required.
FR Installation professionnelle requise.
IT È richiesta l'installazione professionale.
DE Professionelle Installation erforderlich.
ES La instalación debe ser realizada por profesionales cualificados.
CA Cal que la instal·lació sigui realitzada per professionals qualificats.
PT Necessita de instalação feita por profissionais.
NL Professionele installatie vereist.
SV Professionell installation krävs.
NO Profesjonell montering påkrevet.
DA Professionel installation påkrævet.
FI Ammattilaisen tekemä asennus vaaditaan.
RU Требуется профессиональная установка.
CS Vyžadována profesionální instalace.
PL Wymagana profesjonalna instalacja.
HU Üzembe helyezését csak szakember végezheti.
RO Instalarea va fi făcută obligatoriu de profesioniști.
TR Profesyonel Kurulum Gerekli.
EL Απαιτείται εγκατάσταση από επαγγελματία.

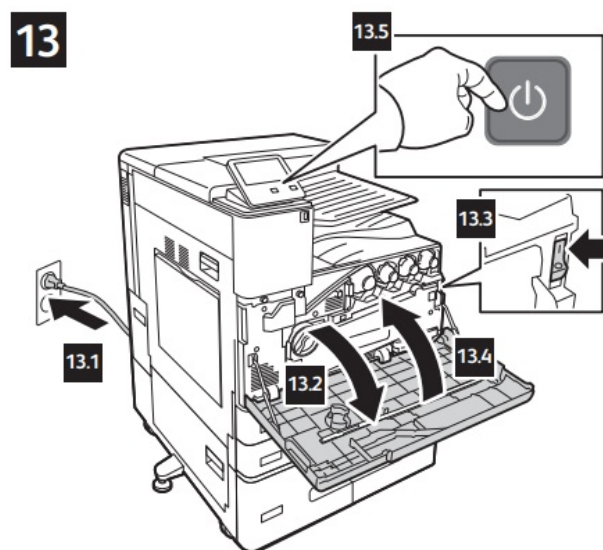
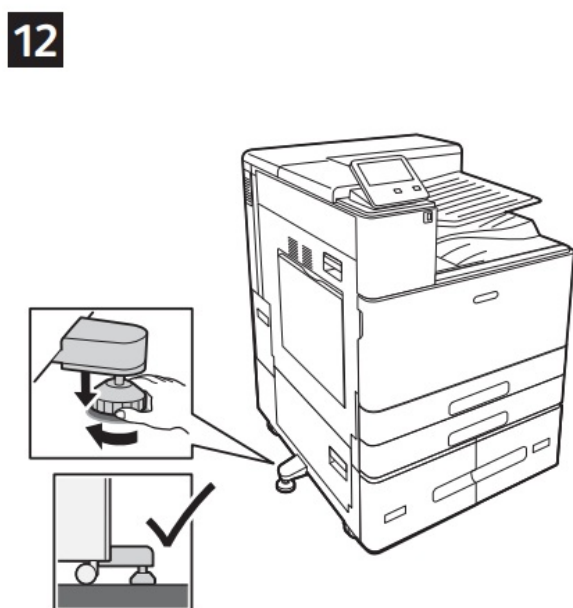
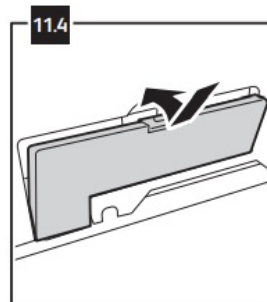
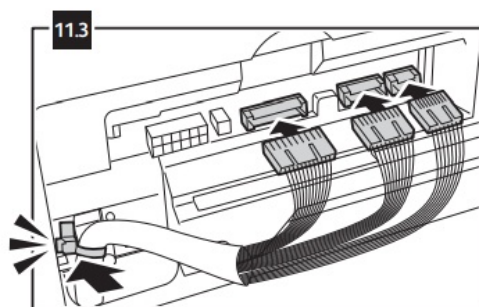
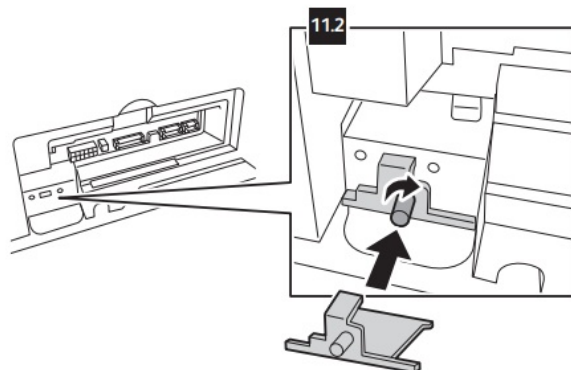
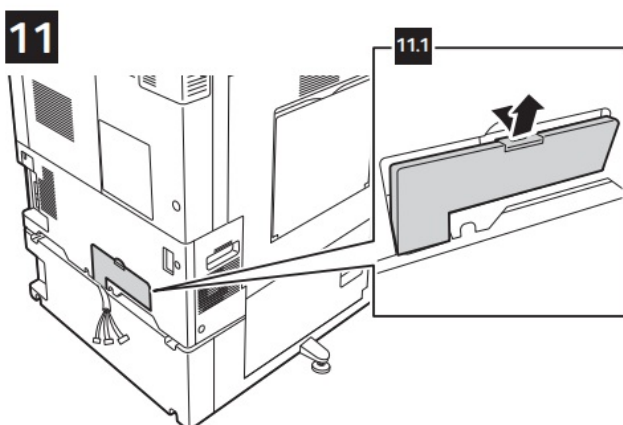
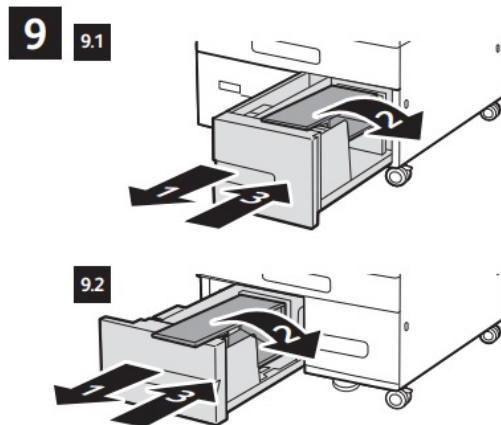
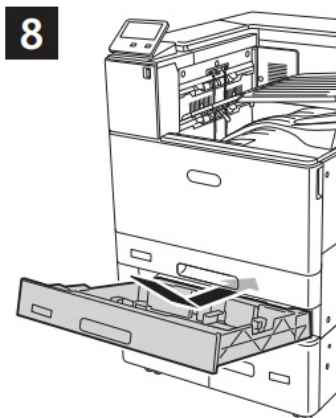
7

7.1



7.2







[xerox C9000 High Capacity Tandem Tray Option](#) [pdf] Installation Guide
C9000, C9000-DTM, C9000 High Capacity Tandem Tray Option, C9000, High Capacity Tandem
Tray Option, Capacity Tandem Tray Option, Tandem Tray Option, Tray Option

References

- [User Manual](#)

Manuals+, Privacy Policy

This website is an independent publication and is neither affiliated with nor endorsed by any of the trademark owners. The "Bluetooth®" word mark and logos are registered trademarks owned by Bluetooth SIG, Inc. The "Wi-Fi®" word mark and logos are registered trademarks owned by the Wi-Fi Alliance. Any use of these marks on this website does not imply any affiliation with or endorsement.