



# Xerox C9000-DTM VersaLink C9000 Colour Printer Installation Guide

[Home](#) » [Xerox](#) » Xerox C9000-DTM VersaLink C9000 Colour Printer Installation Guide 

## Contents

- [1 Xerox C9000-DTM VersaLink C9000 Colour Printer](#)
- [2 Unpack the Printer](#)
- [3 Select a location](#)
- [4 Remove the packing material](#)
- [5 Install the options](#)
- [6 Install the Output Tray and Stabilizer Foot as needed](#)
- [7 Documents / Resources](#)
  - [7.1 References](#)
- [8 Related Posts](#)



**Xerox C9000-DTM VersaLink C9000 Colour Printer**



## **Xerox® VersaLink® C8000/C9000 Installation Guide**

### **Introduction**

This guide provides step-by-step instructions for setting up your Xerox® VersaLink® C8000/C9000 printer. Follow each section carefully to ensure proper installation and operation.

### **Unpack the Printer**

- Carefully remove the printer from its packaging.
- Weight: 80.8 kg (178 lb).

### **Select a Location**

Ensure the following clearances around the printer:

- 10 cm (3.9 in.) on all sides.
- 80.9 cm (31.9 in.) height clearance.
- 72 cm (28.3 in.) depth clearance.
- 117.8 cm (46.4 in.) width clearance.

### **Remove the Packing Material**

- Remove all tape and packing materials from the printer.
- Open the printer doors and remove any internal packaging.

### **Load the Paper Tray**

- Open the paper tray.
- Adjust the guides to fit the paper size.
- Load the paper into the tray.

## **Install the Options**

- Install any additional options as required.

## **Install the Output Tray and Stabilizer Foot**

- Attach the output tray to the printer.
- Install the stabilizer foot if necessary.

## **Install the Toner Cartridges**

- Open the toner access door.
- Shake each toner cartridge gently before installation.
- Install each cartridge in the correct slot (K, C, M, Y).

## **Select a Printer Connection**

- Choose your connection type: USB, Ethernet, or Wi-Fi.
- Connect the appropriate cables.

## **Connect the Power**

- Plug the power cable into the printer and an electrical outlet.
- Turn on the printer.

## **Follow the Prompts for Panel Language and Device Configuration**

- Use the printer's control panel to select language and configure settings.

## **Specifications**

<b>Weight</b>	80.8 kg (178 lb)
<b>Clearance</b>	10 cm (3.9 in.) on all sides

## **FAQ**

### **• What should I do if the printer does not power on?**

Ensure the power cable is securely connected to both the printer and the outlet. Check the outlet for power.

### **• How do I connect the printer to Wi-Fi?**

Use the printer's control panel to navigate to network settings and select Wi-Fi setup. Follow the on-screen

instructions.

- Where can I find additional support?

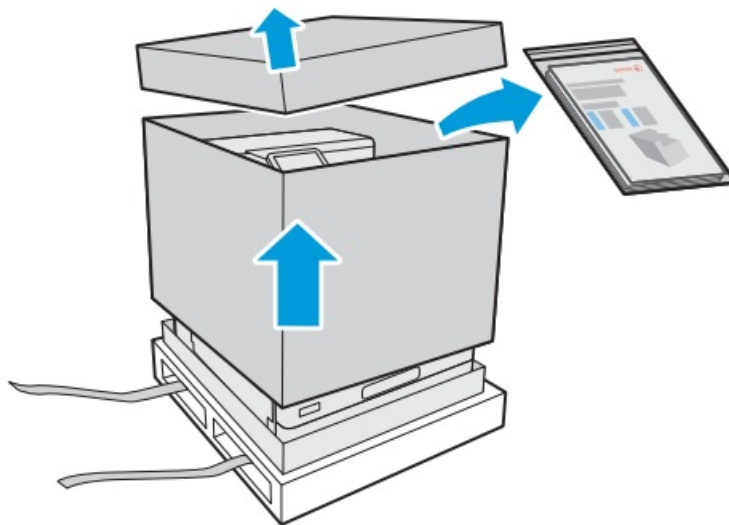
Visit [www.xerox.com/office/VLC8000support](http://www.xerox.com/office/VLC8000support) for more information.

## Xerox® VersaLink® C8000/C9000

- Color Printer

### Installation Guide

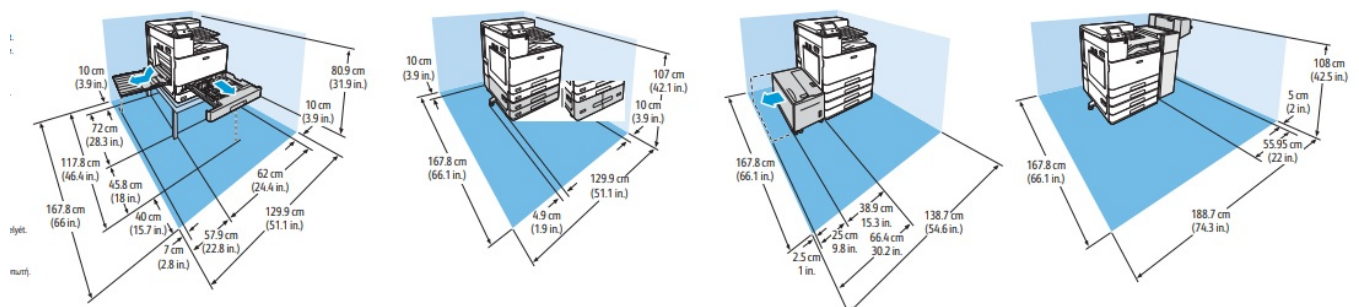
#### Unpack the Printer

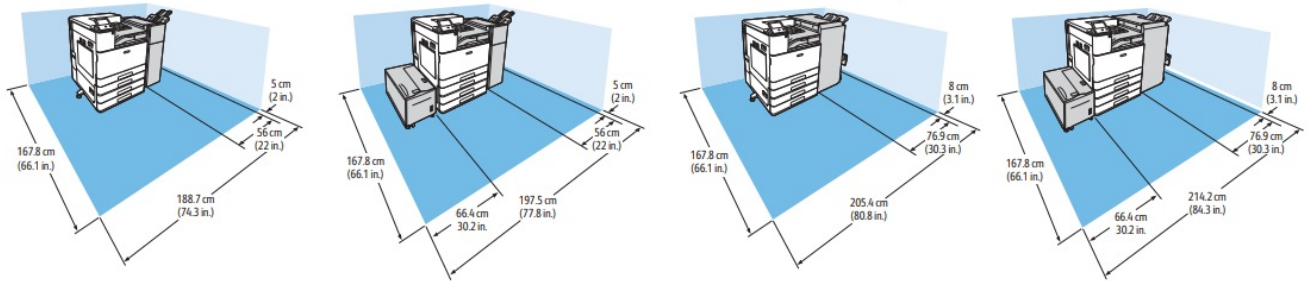


**Professional Installation required.**

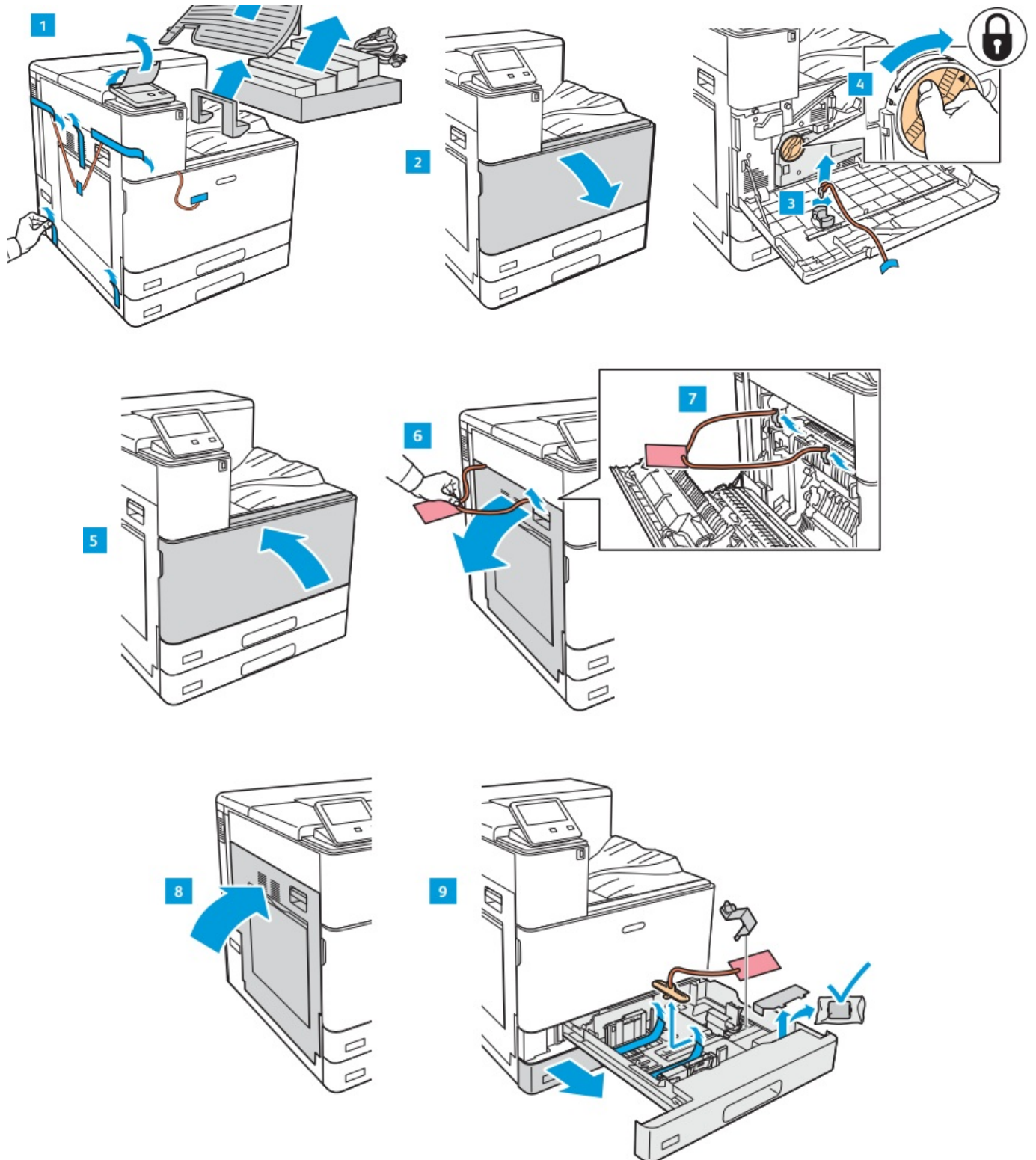


#### Select a location



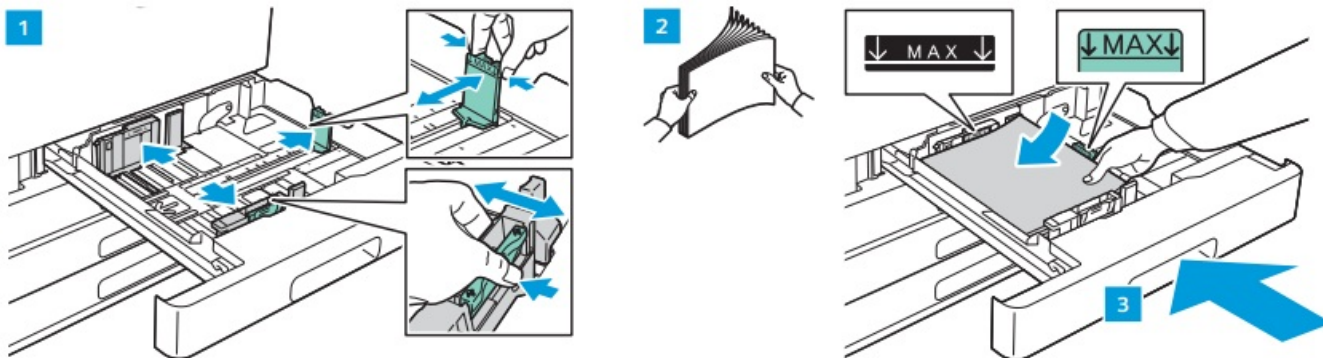


## Remove the packing material

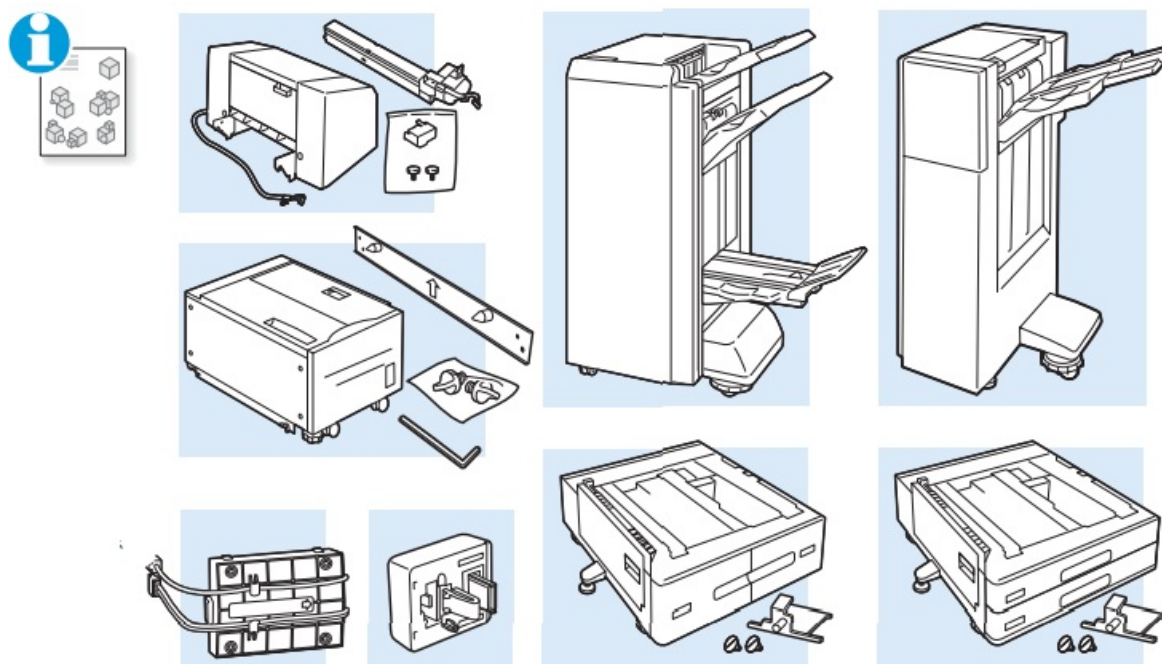


## Load the paper tray.

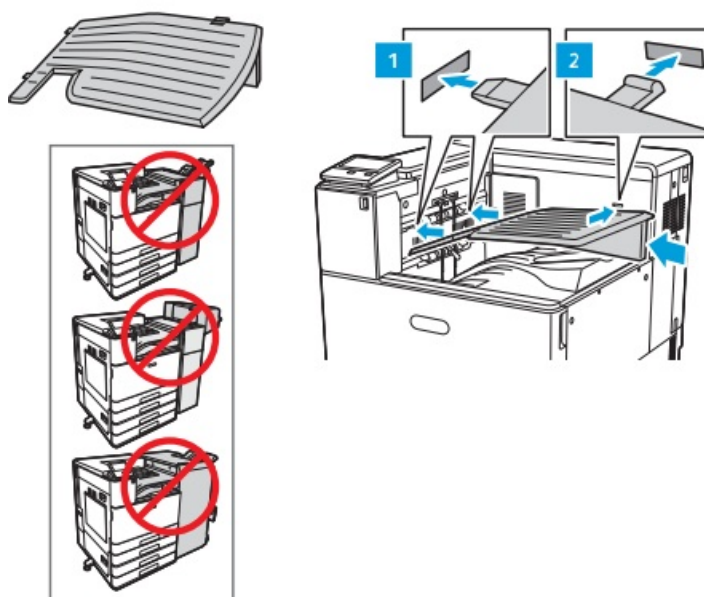




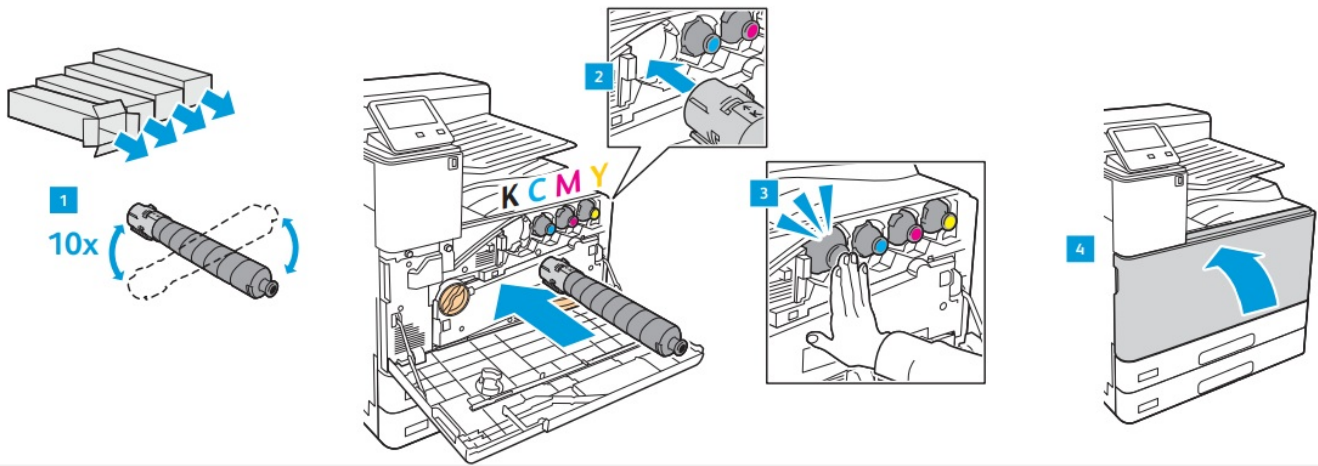
## Install the options



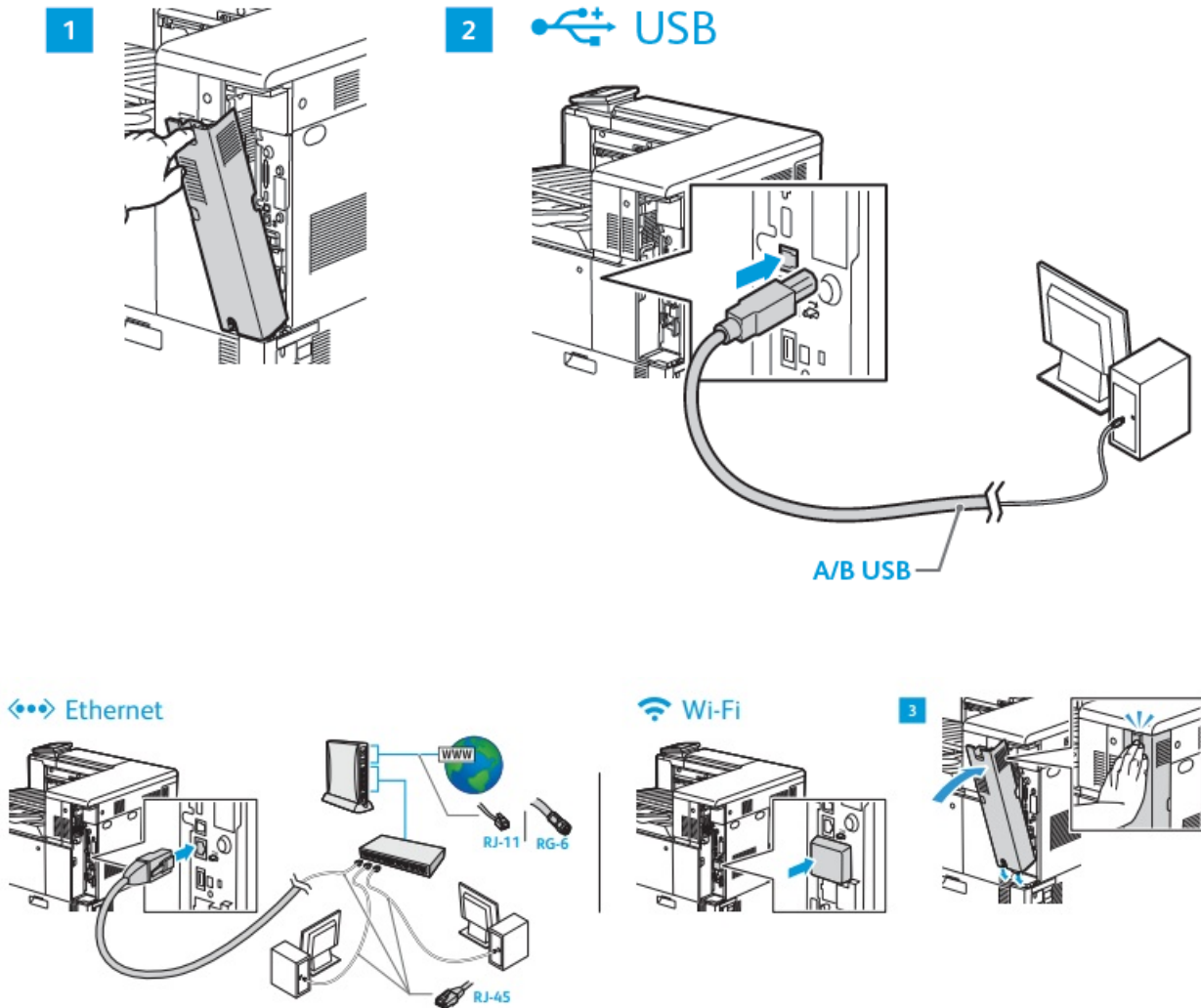
## Install the Output Tray and Stabilizer Foot as needed



## Install the Toner Cartridges.

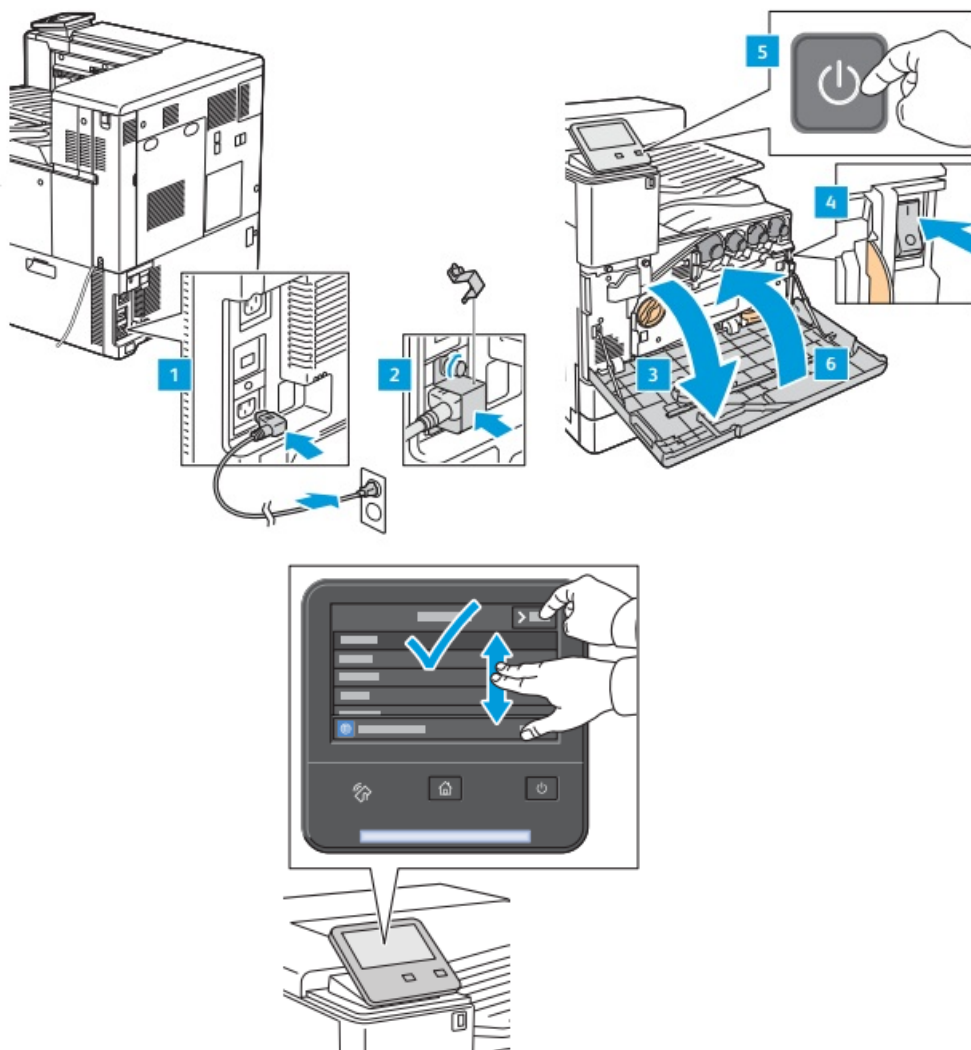


Select a printer connection.



- Use an Ethernet router or switch and use Category 5e or 6 cables.
- For an optional Wi-Fi setup, refer to the User Guide.

Follow the prompts for panel language and device configuration

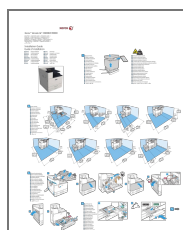


607E21600 Rev B

© 2017 Xerox Corporation. All Rights Reserved. Xerox®, Xerox and Design®, and VersaLink® are trademarks of Xerox Corporation in the United States and/or other countries. BR22197

[www.xerox.com/office/VLC8000support](http://www.xerox.com/office/VLC8000support)

## Documents / Resources



[Xerox C9000-DTM VersaLink C9000 Colour Printer](#) [pdf] Installation Guide  
C9000, C9000-DTM, C9000-DTM VersaLink C9000 Colour Printer, C9000-DTM, VersaLink C9000 Colour Printer, C9000 Colour Printer, Colour Printer, Printer

## References

- [User Manual](#)

[Manuals+.](#) [Privacy Policy](#)

This website is an independent publication and is neither affiliated with nor endorsed by any of the trademark owners. The "Bluetooth®" word mark and logos are registered trademarks owned by Bluetooth SIG, Inc. The "Wi-Fi®" word mark and logos are registered trademarks owned by the Wi-Fi Alliance. Any use of these marks on this website does not imply any affiliation with or endorsement.