



Xerox C415 VersaLink Color Multifunction Printer User Manual

[Home](#) » [Xerox](#) » Xerox C415 VersaLink Color Multifunction Printer User Manual 

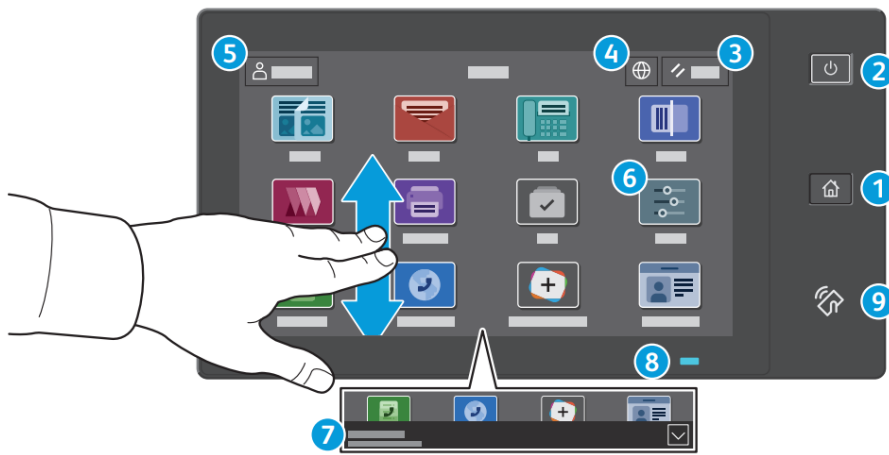


Contents

- 1 Control Panel
- 2 Device app
- 3 Billing and Usage Information
- 4 Embedded Web Server
- 5 App Gallery
- 6 Printer Tour
- 7 Paper Handling
- 8 Paper Orientation
- 9 Copying
- 10 Scanning and Emailing
- 11 Retrieving Scan Files
- 12 Faxing
- 13 Printing from a USB Flash Drive
- 14 Printing Jobs Stored on the Printer
- 15 Documents / Resources
 - 15.1 References

Control Panel

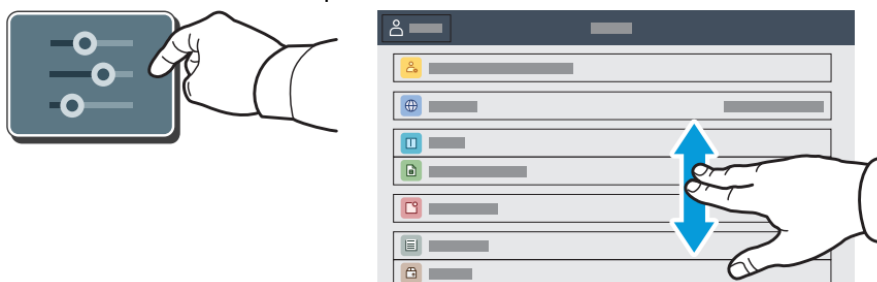
Available apps can vary based on your printer setup. For details about apps and features, refer to the User Guide.



1. Home returns to the main app screen.
2. Power/Wake starts the printer or provides options to sleep, restart or power off the printer.
3. Reset restores settings to their default values in all apps.
4. Language provides choice of screen languages.
5. Log In provides special access to tools and settings.
6. Device app provides access to printer information and settings.
7. Notification banner shows printer status and warnings. To see all notifications, touch the banner. To close the banner, touch the down arrow.
8. Status LED indicates printer status. For detailed information, refer to the User Guide.
9. NFC Area allows pairing with a mobile device to print or scan from an app.

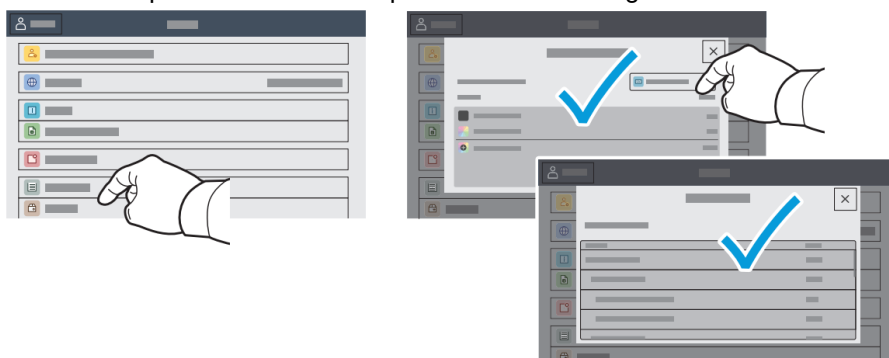
Device app

The Device app provides access to supplies status, printer information, and settings. Some menus and settings require log in with the administrator name and password.



Billing and Usage Information

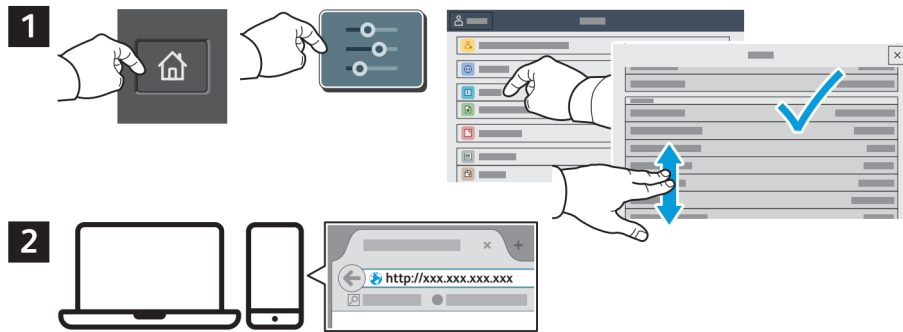
In the Device features menu, to view basic impression counts, touch Billing/Usage. To view detailed usage counts, touch Usage Counters. The list provides detailed impression count categories.



Embedded Web Server

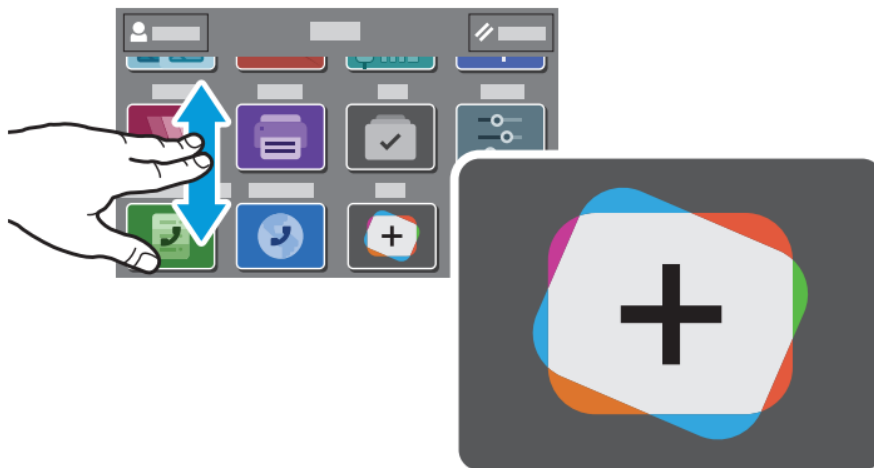
The Xerox® Embedded Web Server enables you to access printer configuration details, paper and supplies status, job status, and diagnostic functions over a network. You can also manage fax, email, and address books. To connect, in a Web browser, type the printer IP address. The network IPv4 address is available on the control panel touch screen. Touch Device app > About, then scroll down.

For details on using the Embedded Web Server, refer to the User Guide located on Xerox.com.



App Gallery

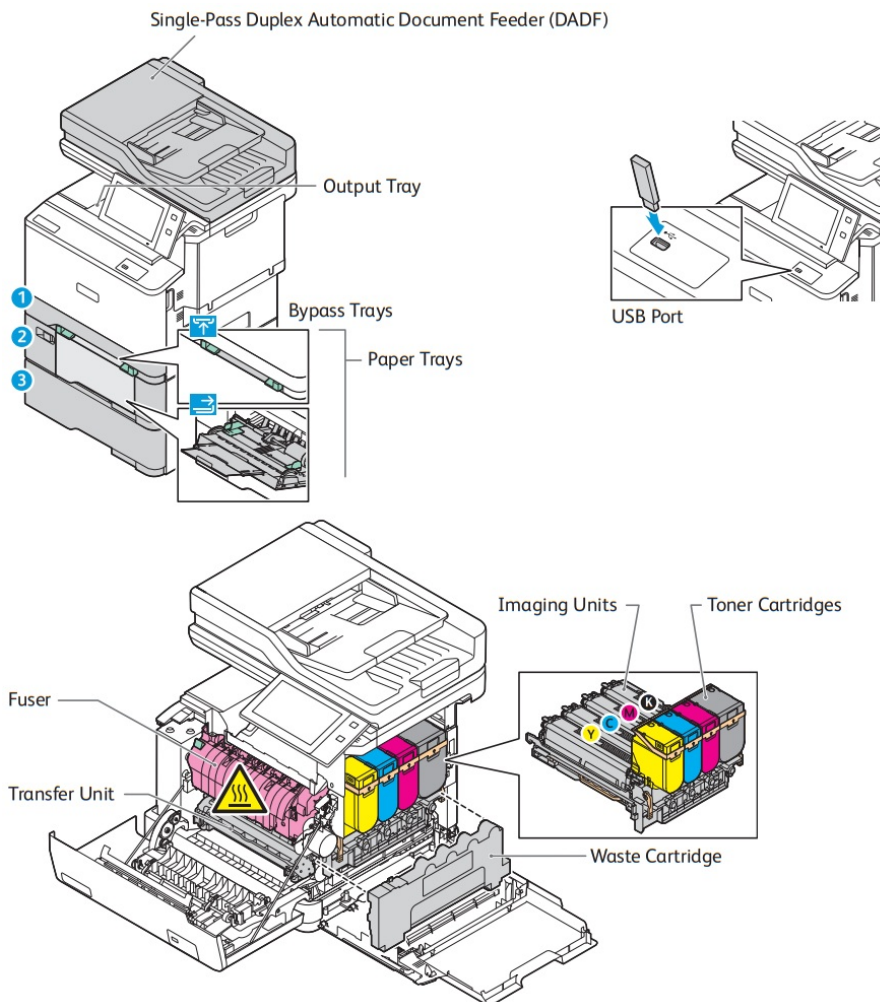
The Xerox App Gallery has a growing collection of productivity apps that you can install on your printer. Find the app on your home screen and create your login directly, or go to www.xerox.com/appgallery to log in and add your device. To simplify app installation, use the same name for your app gallery login credentials that you used for the printer login.



www.xerox.com/appgallery

Printer Tour

Optional accessories can be part of your printer setup. For details, refer to the User Guide.

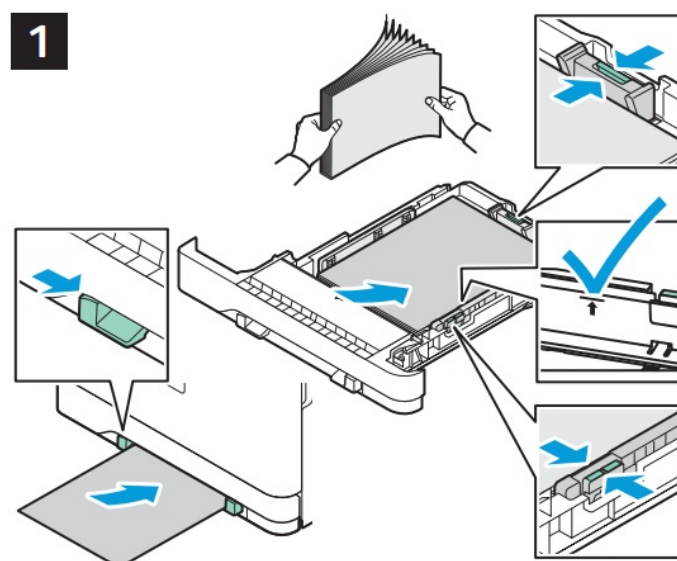


Paper Handling

For a complete list of paper that works with your printer, see the Recommended Media List at: www.xerox.com/rmlna (U. S. and Canada) www.xerox.com/rmleu (Europe)

For details about trays and paper, refer to the User Guide.

Loading Paper



For the best results, fan the edges of the paper. Adjust the guides to fit the paper size. Do not load paper above the maximum fill line.

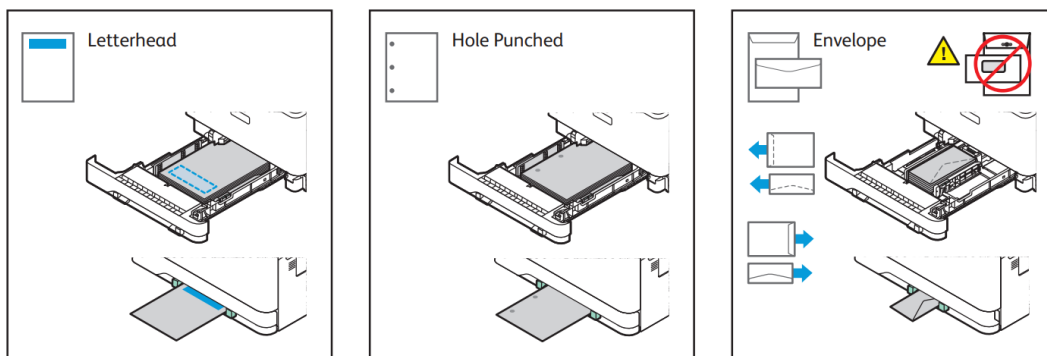


Confirm or change size, type, and color settings if needed.



When printing, select options in the print driver.

Paper Orientation



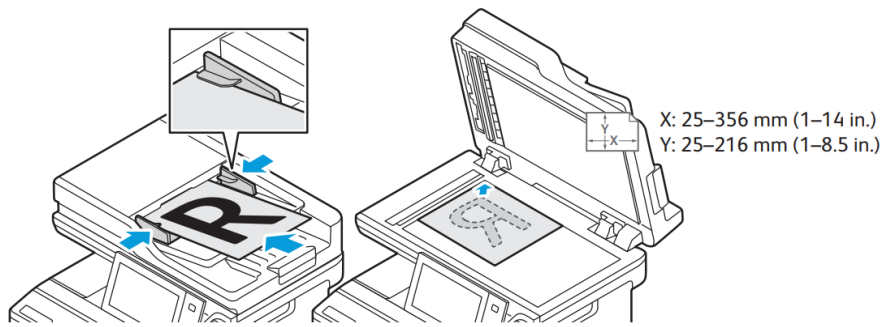
Copying

For details, refer to the User Guide.

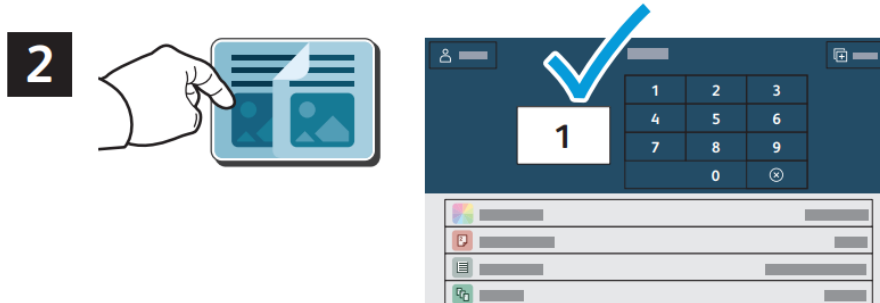
1

| | |
|--|---|
| | X: 148–356 mm (5.8–14 in.) Y: 105–216 mm (4.1–8.5 in.) |
| | 52–120 g/m ² (14 lb. Text–32 lb. Bond) |
| | ≤100 (75 g/m ² , 20 lb. Bond) |





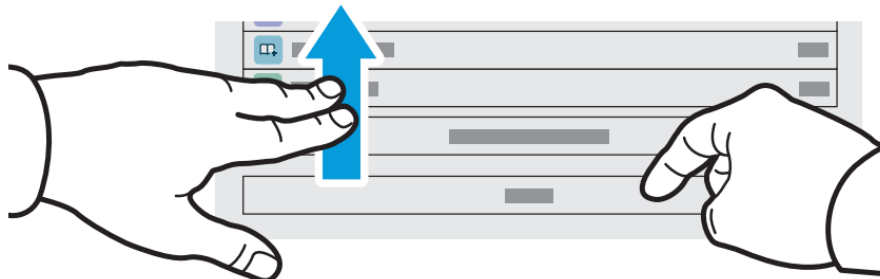
Load the original documents.



Touch Copy, then and select the number of copies.



Select feature settings from the list, then touch **Start**.



Note: Settings from previous users remain onscreen for a short time. To restore the default settings in an app, scroll to the bottom of the feature list and touch Reset.

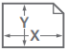


Scanning and Emailing

If the printer is connected to a network, you can select a destination for the scanned image at the printer control panel.

This guide defines techniques to scan documents without preparing special setups:

- Scanning documents to an email address.
- Scanning documents to a saved Favorite, Address Book listing, or USB Flash Drive.
- Scanning documents to the Default Public folder on the printer hard drive, and retrieving them using your Web browser.

For details and more scan setups, refer to the User Guide. For details about address book and workflow template setup, refer to the System Administrator Guide.

| | |
|---|---|
|  | X: 148–356 mm (5.8–14 in.) Y: 105–216 mm (4.1–8.5 in.) |
|  | 52–120 g/m ² (14 lb. Text–32 lb. Bond) |
|  | ≤100 (75 g/m ² , 20 lb. Bond) |



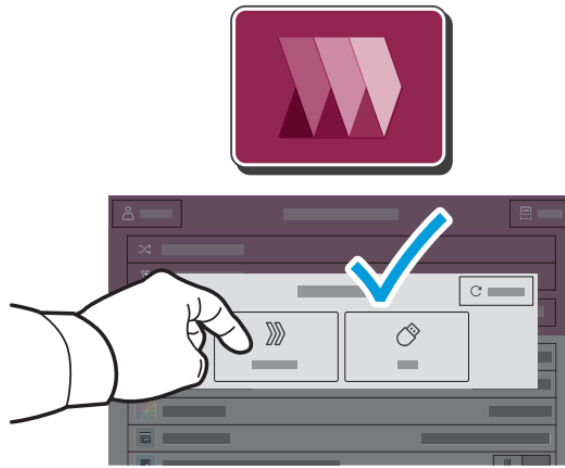
Load the original documents.



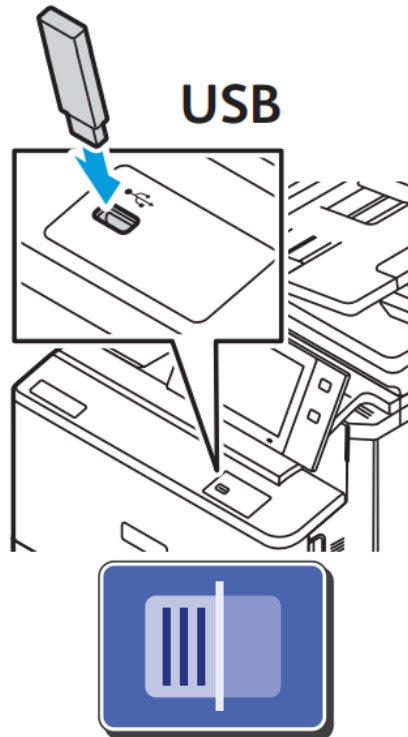
Press Home, then to email the scan, touch Email. To scan to the Default Public Folder or a USB Flash Drive, touch Workflow Scanning. If your scan destination is stored in the Address Book or saved as a Favorite, touch Scan To.



For Email, touch Manual Entry, type the email address using the touch screen keypad, then touch Add. To add more than one email address to the list, touch Add Recipient. To type a subject line for the email, touch Subject. To select saved email addresses, use the Device Address Book or select from Favorites.



For Workflow Scanning, touch Default Public Folder, or insert your USB Flash Drive.



For Scan To, touch a destination type, then enter the appropriate information. To add more than one destination to the list, touch Add Destination.



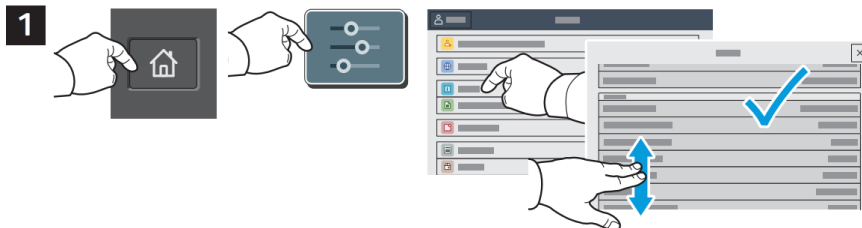
Change the settings as needed, then touch Scan, or for Email, touch Send.



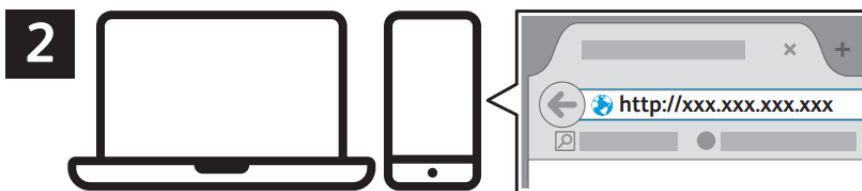
Note: Settings from previous users remain onscreen for a short time. To restore the default settings in an app, scroll to the bottom of the feature list, then touch Reset.

Retrieving Scan Files

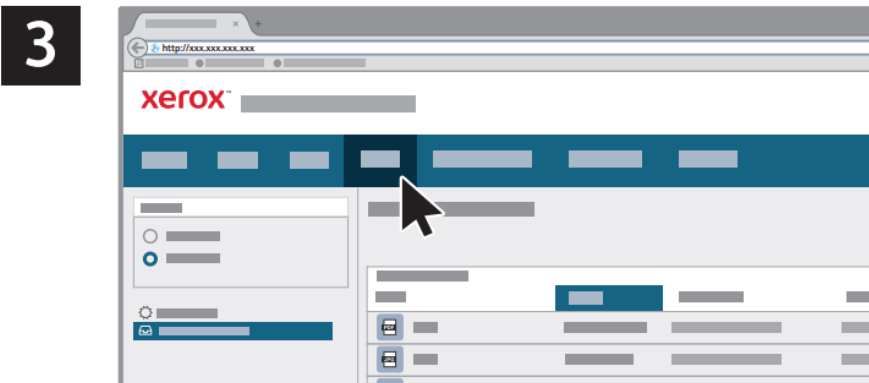
To download your scanned images from the Default Public Folder on the printer, use the Embedded Web Server. You can set up personal folders and workflow scanning templates in the Embedded Web Server. For details, refer to the User **Guide**.



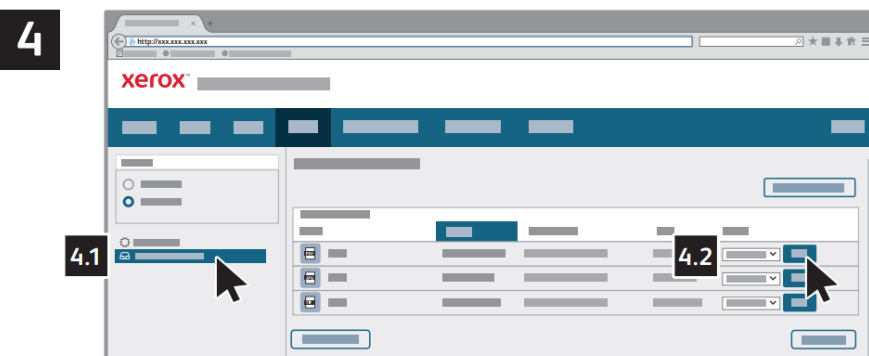
Note the printer IP address on the touch screen. If the IP Address does not appear in the top of the touch screen, press Home, touch Device > About then scroll to check the IP Address.



In a Web browser, type the printer IP address, then press Enter or Return.



Click the Scan tab.



Select the Default Public Folder, then find your scan in the list. To download the scan, click Go.



To refresh the list, click **Update View**.

To save the file to your computer, select **Download**.

To print the saved file again, select **Reprint**.

To permanently remove the stored job, select **Delete**.

To open a directory, select **Open**.

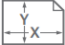


Faxing

You can send a fax in one of four ways:

- Fax scans the document then sends it directly to a fax machine.
- Server Fax scans the document then sends it to a fax server, which transmits the document to a fax machine.
- Internet Fax scans the document then emails it to a recipient.
- LAN Fax sends the current print job as a fax.

For details, refer to the User Guide. For details about LAN Fax, refer to the print driver software. For details about fax setup and advanced settings, refer to the System Administrator Guide.

1

| | |
|---|---|
|  | X: 148–356 mm (5.8–14 in.) Y: 105–216 mm (4.1–8.5 in.) |
|  | 52–120 g/m ² (14 lb. Text–32 lb. Bond) |
|  | ≤100 (75 g/m ² , 20 lb. Bond) |



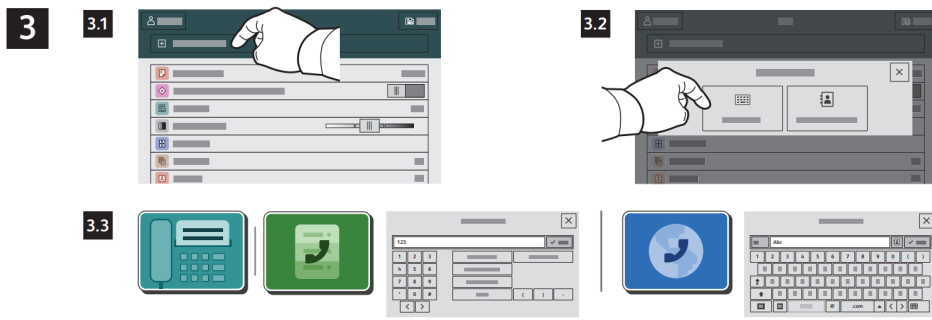
Load the original documents.

2



To send the fax to a fax machine, press Home, then touch Fax or Server Fax.

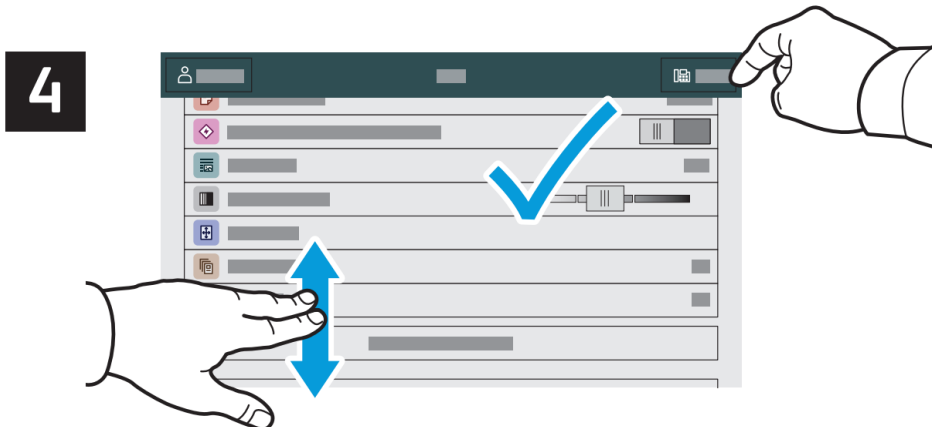
To send the fax as an email attachment, touch Home, then touch Internet Fax.



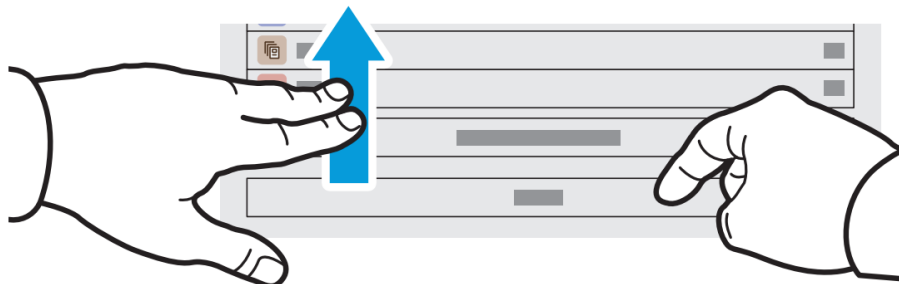
For fax numbers, touch Manual Entry, then enter the fax number using the touch screen alphanumeric keys and special characters. Touch Add. To add more fax numbers to the list, touch Add Recipient.

For Internet Fax email addresses, touch Manual Entry, then enter the email address using the touch screen keypad. Touch Add. To add more email addresses to the list, touch Add Recipient.

To select saved numbers, use the Device Address Book or Favorites. To select stored fax locations, use the Mailbox or Polling.



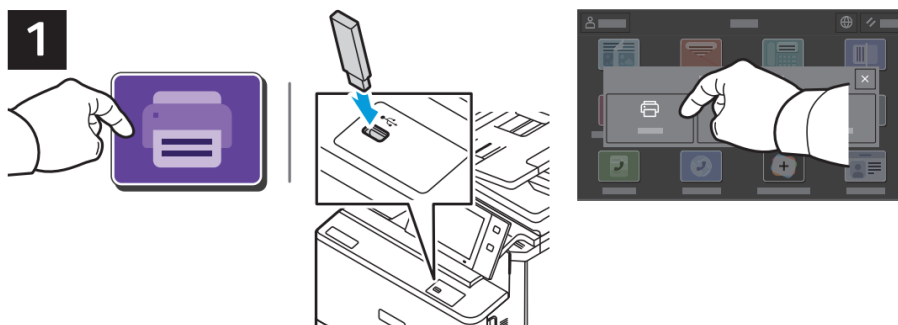
Change the settings as needed, then touch Send.



Note: Settings from previous users remain onscreen for a short time. To restore the default settings in an app, scroll to the bottom of the feature list, then touch Reset.

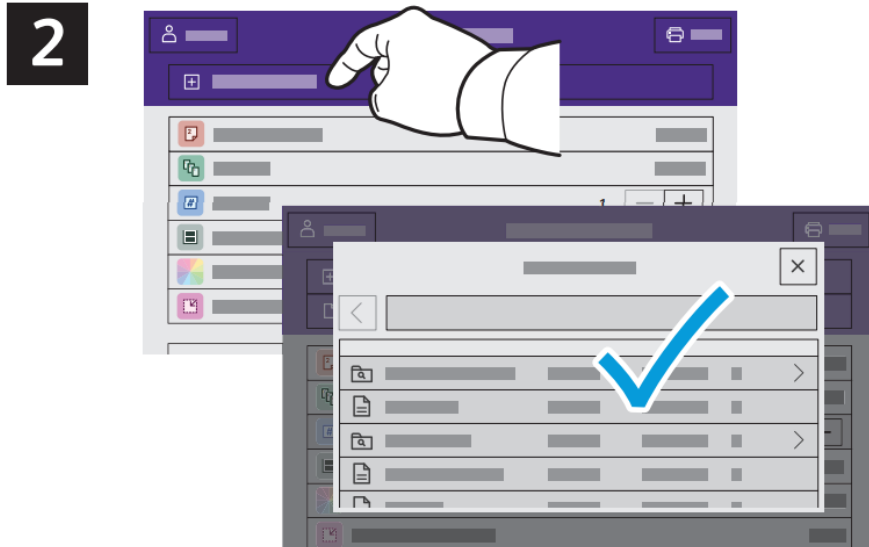
Printing from a USB Flash Drive

You can print .pdf, .tiff, .ps, .xps and other files types directly from a USB Flash Drive. For more information, refer to the User Guide.

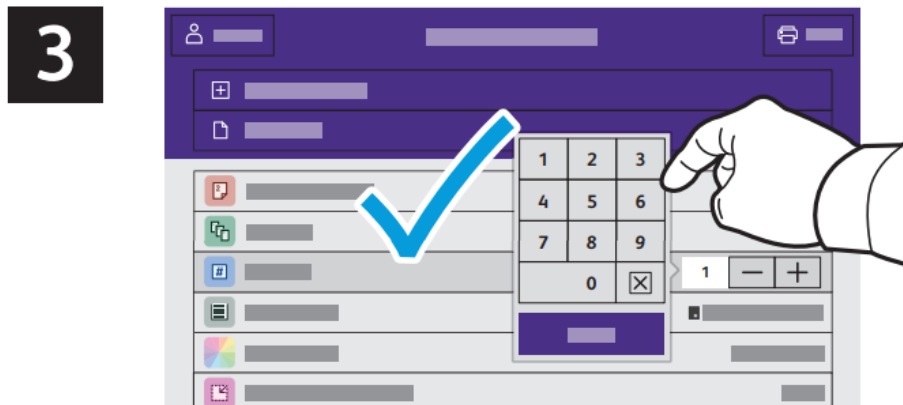


Do not remove USB Flash Drive during reading. Files may be damaged.

Touch Print From or insert your USB Flash Drive, then choose Print From USB.



Touch Add Document, then navigate to your files and select them.



To select the number of copies, touch the plus sign (+) or the minus sign (-). For larger numbers, touch Quantity then enter a number.



Select settings as needed, then touch Print.



Note: Settings from previous users remain onscreen for a short time. To restore the default settings in an app, scroll to the bottom of the feature list, then touch Reset.

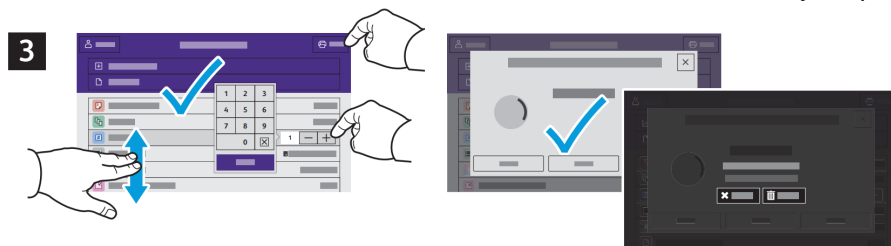
Printing Jobs Stored on the Printer



You can send a print job to save to the printer, then select the job from the printer control panel to print at a later time. Jobs can be saved in the public folder or be password protected. In the Xerox® printer driver, select Properties (Windows) or Xerox Features (Mac OS), then Job Type. Select Saved Job or Secure Print. For Secure Print, type a passcode. Click OK and print the job.



Touch Print From then touch Saved Jobs. Select the Default Public Folder then select your print job.



Select settings from the list. To select the number of copies, touch the plus sign (+) or the minus sign (-). For larger numbers, touch Quantity then enter a number. Touch Print. To delete the job, in the printing screen and confirmation screen, touch Delete.

xerox™

© 2023 Xerox Corporation.

All Rights Reserved.

Xerox®, and VersaLink® are trademarks of Xerox Corporation in the United States and/or other countries.




BR38263

www.xerox.com/office/support

Documents / Resources

| | |
|--|--|
| | <p>Xerox C415 VersaLink Color Multifunction Printer [pdf] User Manual C415 VersaLink Color Multifunction Printer, C415 VersaLink, Color Multifunction Printer, Multifunction Printer, Printer</p> |
|--|--|

References

-  [**Xerox® App Gallery**](#)
-  [**Recommended Printer Papers and Specialty Media - Xerox**](#)
-  [**Recommended Media List - Xerox® Paper & Specialty Media**](#)
-  [**Workplace and Digital Printing Solutions | Xerox**](#)
- [**User Manual**](#)

Manuals+, Privacy Policy

This website is an independent publication and is neither affiliated with nor endorsed by any of the trademark owners. The "Bluetooth®" word mark and logos are registered trademarks owned by Bluetooth SIG, Inc. The "Wi-Fi®" word mark and logos are registered trademarks owned by the Wi-Fi Alliance. Any use of these marks on this website does not imply any affiliation with or endorsement.