



## Xerox B620 Smart VersaLink Printer Installation Guide

[Home](#) » [Xerox](#) » Xerox B620 Smart VersaLink Printer Installation Guide 

### Contents

- 1 Xerox B620 Smart VersaLink Printer
- 2 1. Select a location
- 3 2. Remove the packing material.
- 4 3. Load the paper tray.
- 5 4. Install the options.
- 6 5. Select one printer connection.
- 7 6. Connect the power.
- 8 7. Power on the printer, then follow the prompts to configure the device.
- 9 8. Install the current print drivers from the Xerox website.
- 10 Specifications:
- 11 FAQ:
  - 11.1 Q: Where can I find additional support for my Xerox printer?
- 12 Documents / Resources
  - 12.1 References
- 13 Related Posts

**Xerox B620 Smart VersaLink Printer**



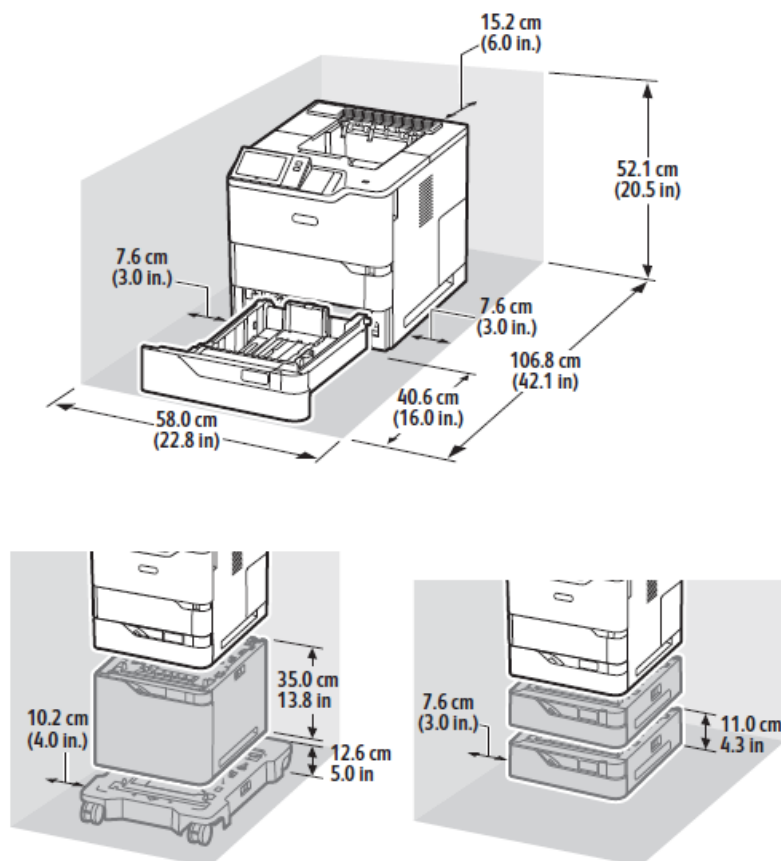
## INSTRUCTION MANUAL



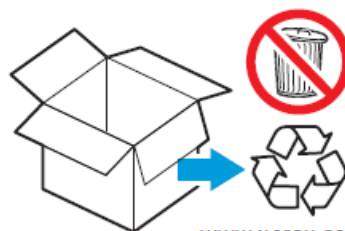
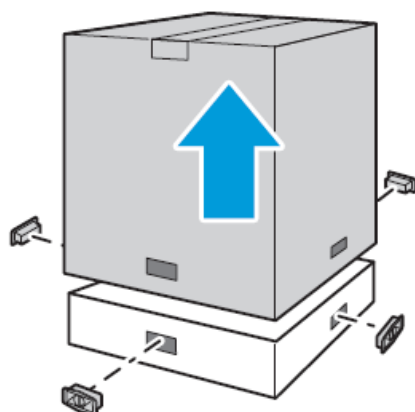
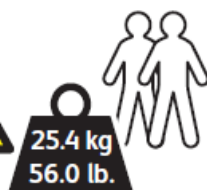
[www.Xerox.com/B620EasyAssistApp](http://www.Xerox.com/B620EasyAssistApp)

Install the Xerox Easy Assist app to setup and manage your printer.

### 1. Select a location



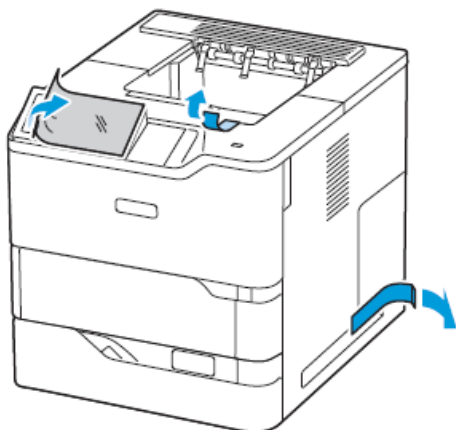
32.2° C / 90° F  
10° C / 50° F



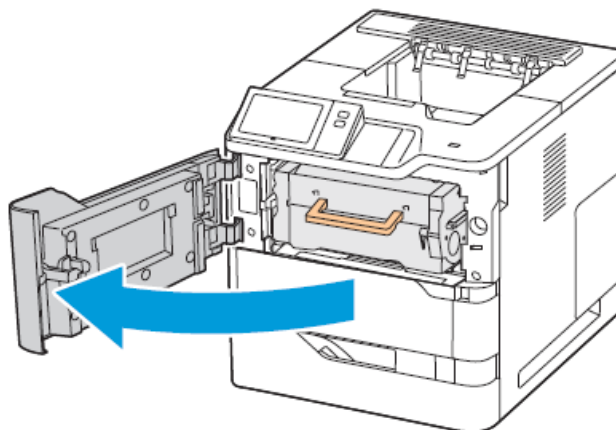
[www.xerox.com/rrr](http://www.xerox.com/rrr)

**2. Remove the packing material.**

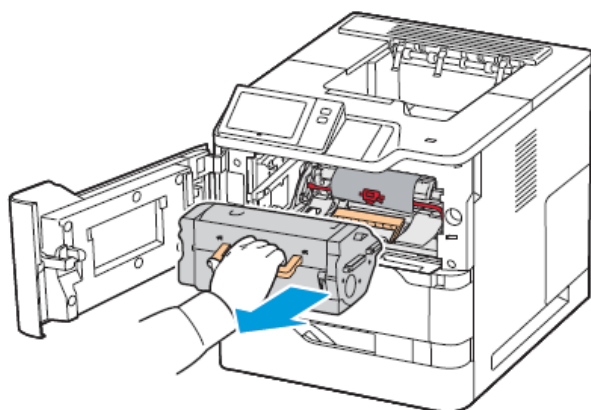
1



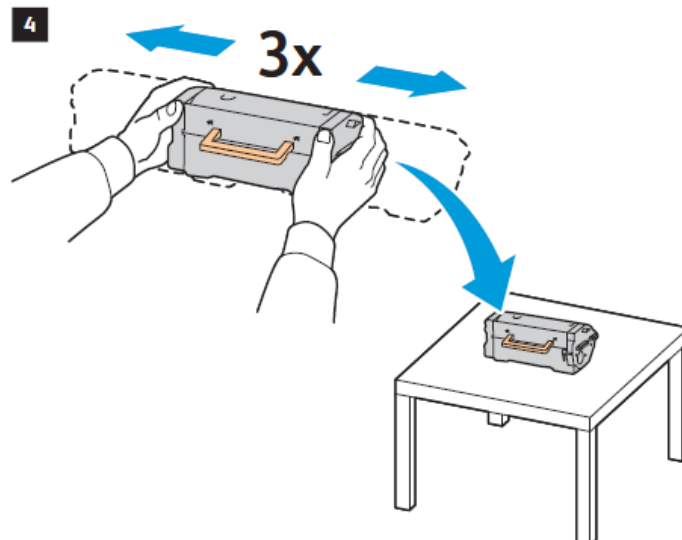
2



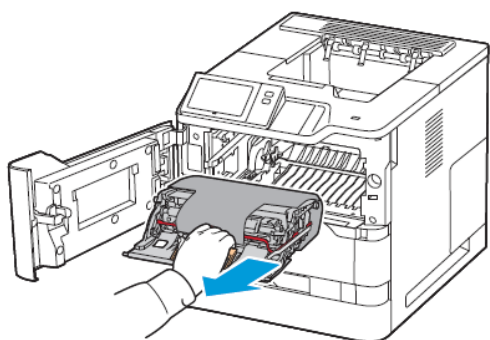
3



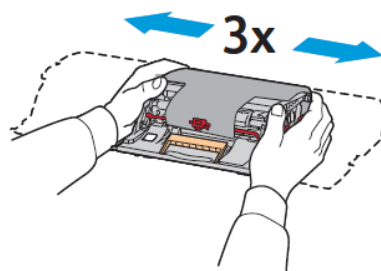
4



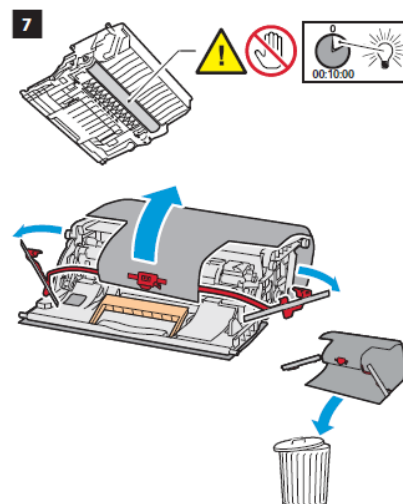
5



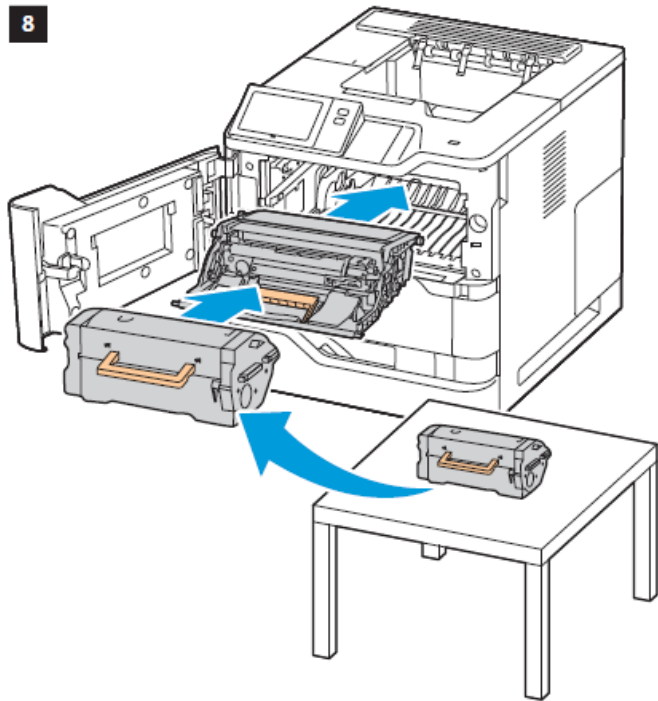
6



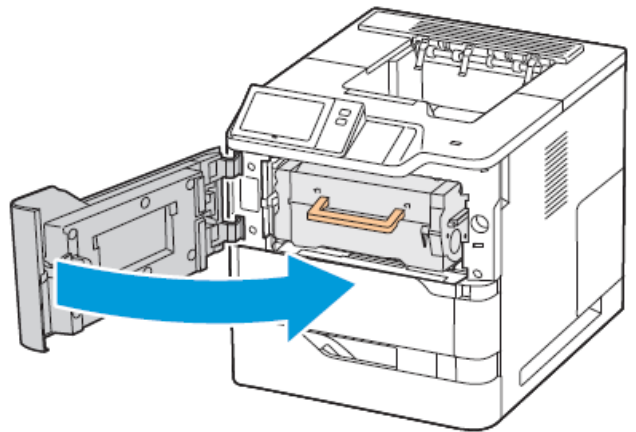
7



8

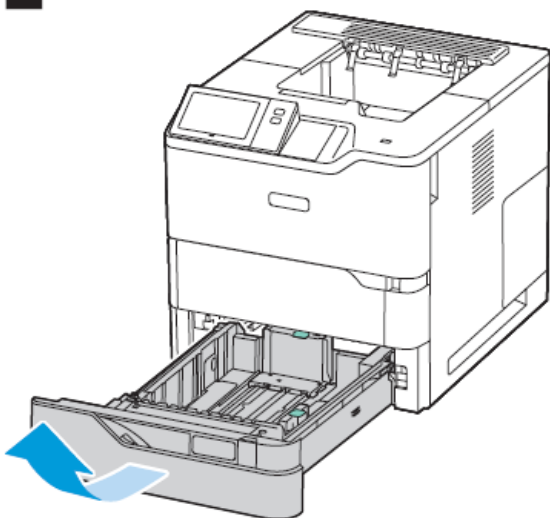


9

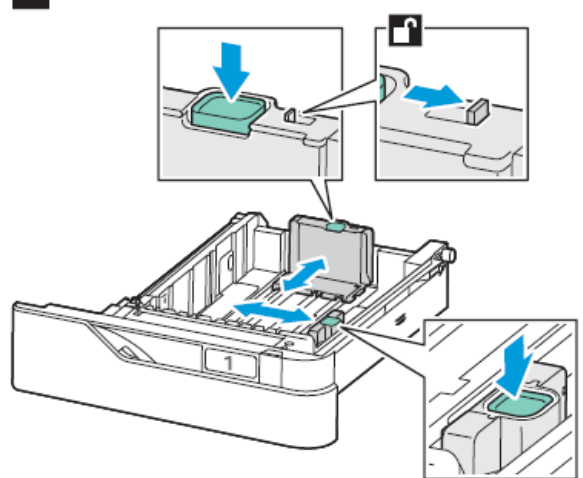


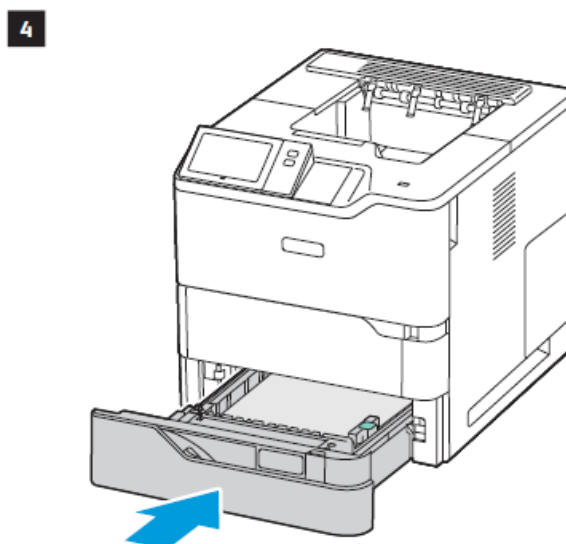
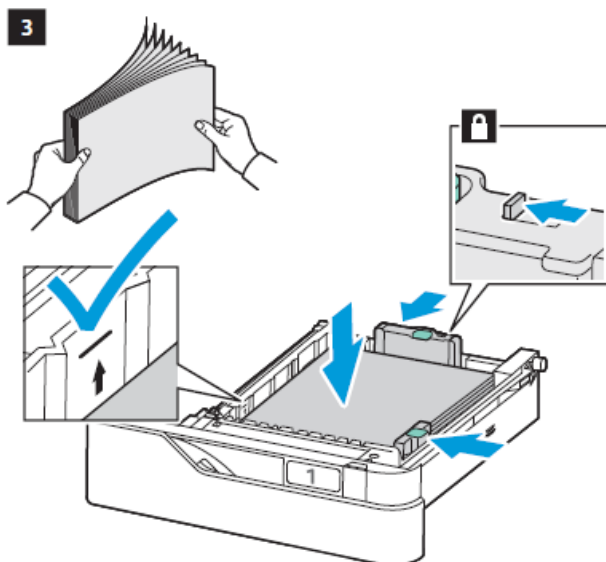
### 3. Load the paper tray.

1

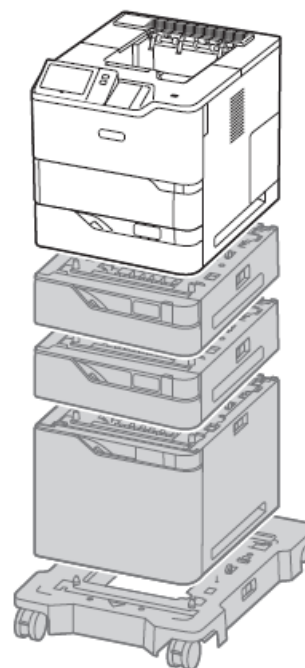
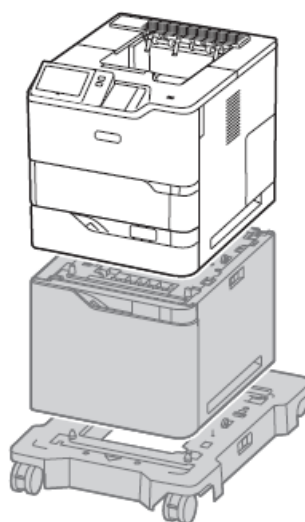
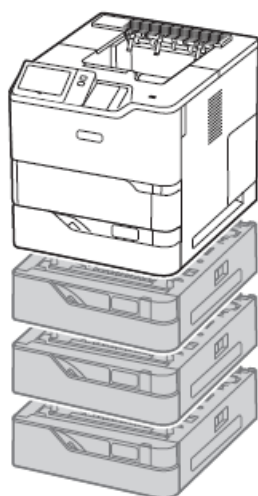
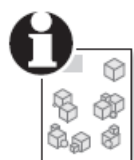


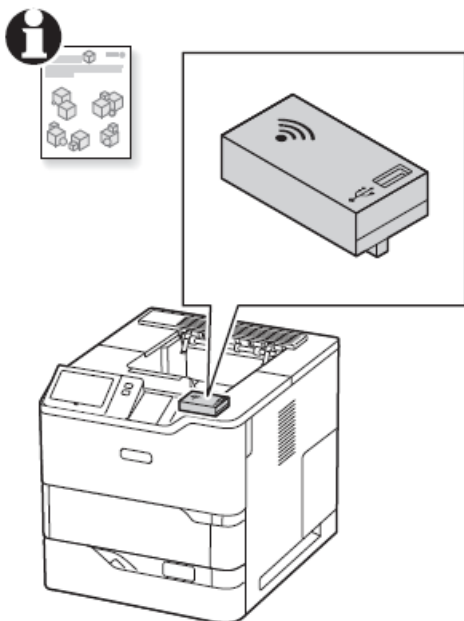
2





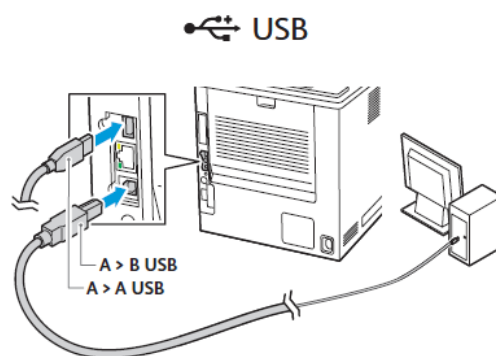
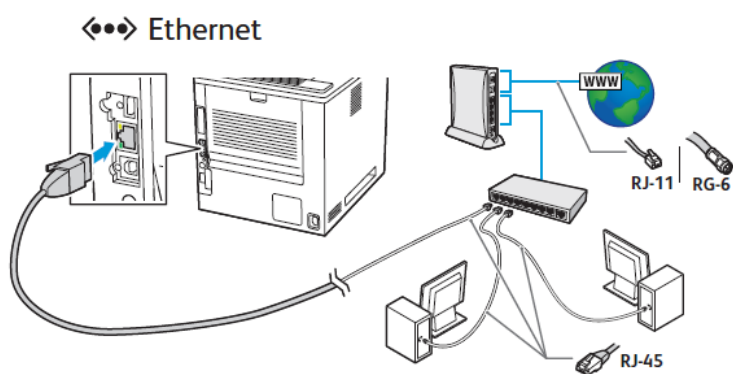
#### 4. Install the options.



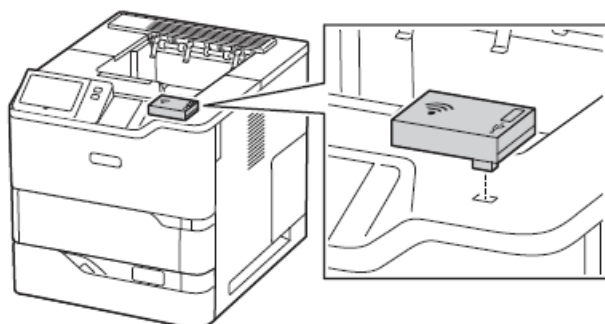


Wireless Network Adapter

## 5. Select one printer connection.

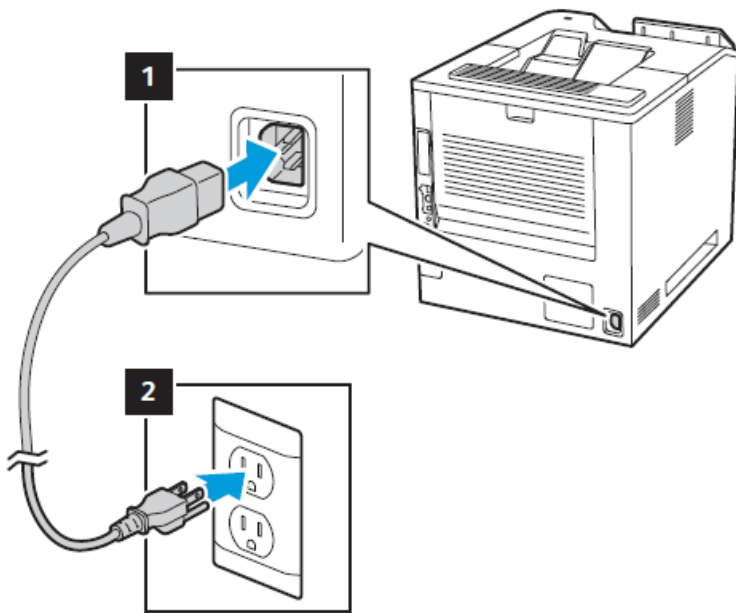


Use an Ethernet router or switch and use your Ethernet cable.

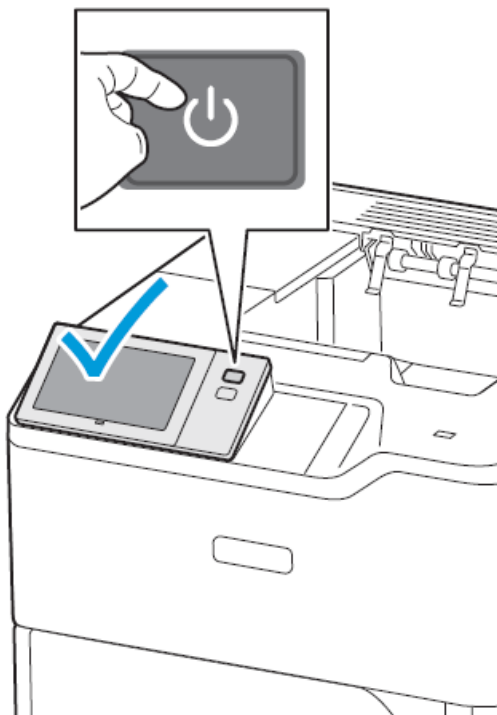


For a Wi-Fi (option) setup, refer to the User Guide.

## 6. Connect the power.

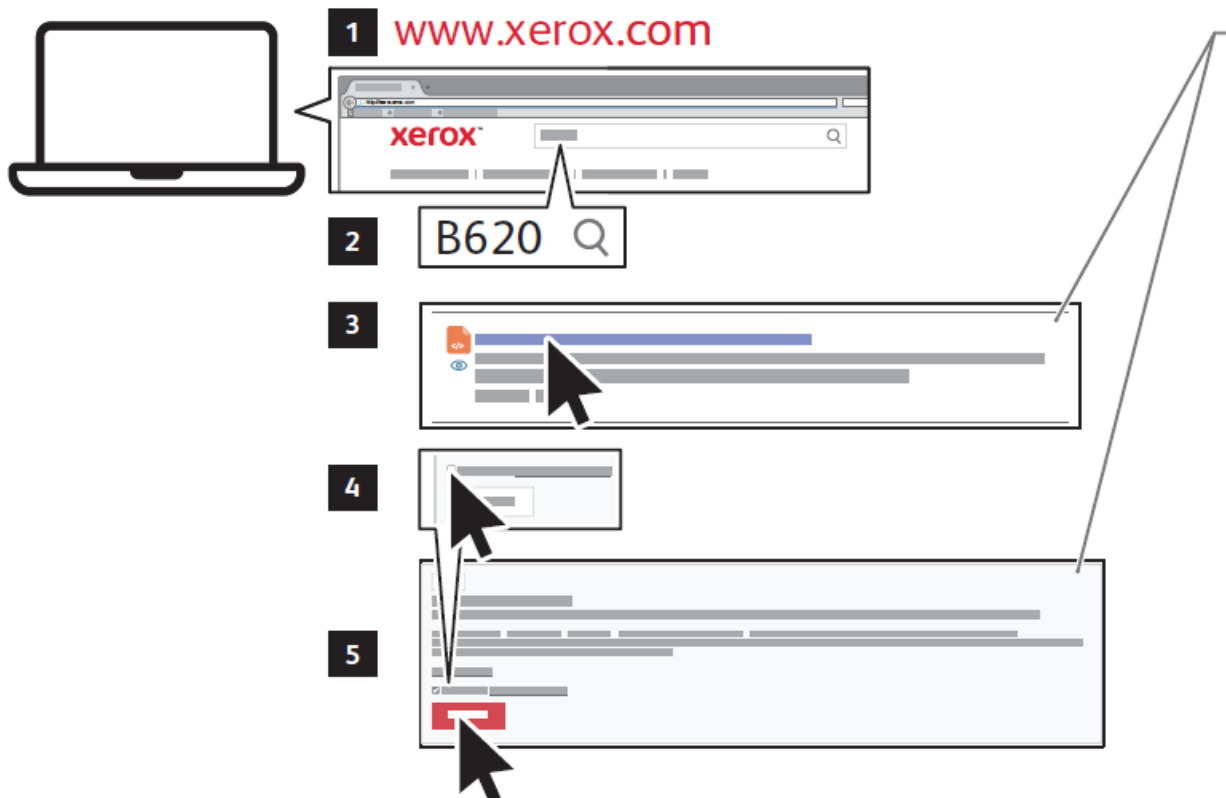


**7. Power on the printer, then follow the prompts to configure the device.**



**8. Install the current print drivers from the Xerox website.**





Xerox VersaLink B620 Drivers & Downloads > Xerox Smart Start – Driver Installer

[www.xerox.com/office/B620support](http://www.xerox.com/office/B620support)

### Specifications:

- Dimensions: 58.0 cm x 52.1 cm x 106.8 cm
- Weight: 25.4 kg
- Model Number: PUB1729-001

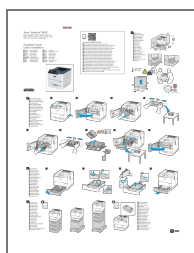
---

### FAQ:

**Q:** Where can I find additional support for my Xerox printer?

**A:** For additional support and resources, visit the Xerox support website at [www.xerox.com/office/B620support](http://www.xerox.com/office/B620support).

### Documents / Resources



[Xerox B620 Smart VersaLink Printer](#) [pdf] Installation Guide  
B620 Smart VersaLink Printer, Smart VersaLink Printer, VersaLink Printer, Printer

## References

-  [Workplace and Digital Printing Solutions | Xerox](#)
- [User Manual](#)

[Manuals+](#), [Privacy Policy](#)

This website is an independent publication and is neither affiliated with nor endorsed by any of the trademark owners. The "Bluetooth®" word mark and logos are registered trademarks owned by Bluetooth SIG, Inc. The "Wi-Fi®" word mark and logos are registered trademarks owned by the Wi-Fi Alliance. Any use of these marks on this website does not imply any affiliation with or endorsement.